

**LEGEND:**

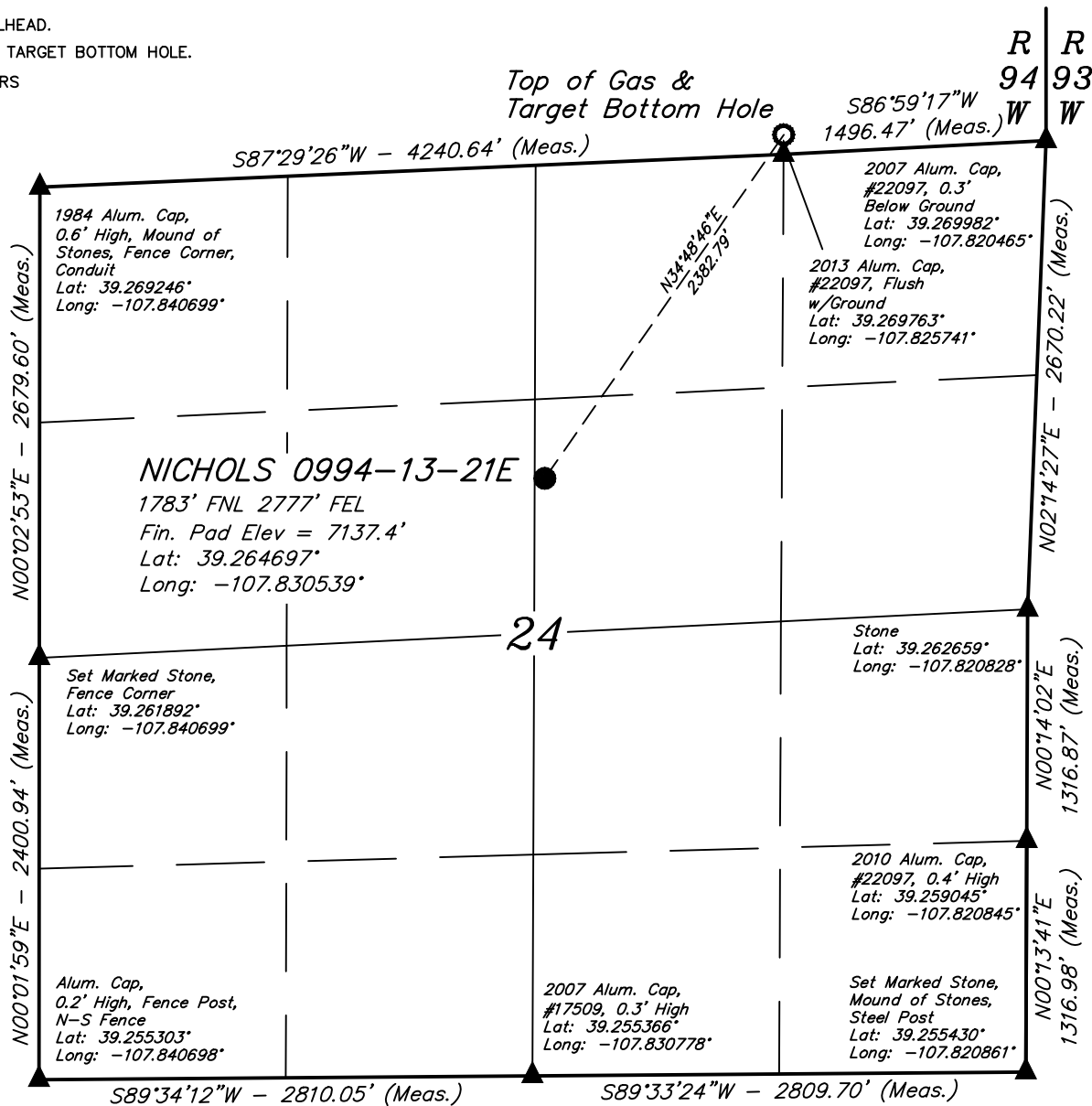
└─ = 90° SYMBOL

● = PROPOSED WELLHEAD.

○ = TOP OF GAS & TARGET BOTTOM HOLE.

▲ = SECTION CORNERS LOCATED.

**T9S, R94W, 6th P.M.**

**NOTE DISTANCE TO NEAREST:**

BUILDING: N45°E 2136'

BUILDING UNIT: OVER A MILE

HOBUE: OVER A MILE

DOAA: OVER A MILE

PUBLIC ROAD: N03°W 329"

ABOVE GROUND UTILITY: N05°W 366'

RAILROAD: OVER A MILE

PROPERTY LINE: N03°W 452'

**NOTE:**

1.) All latitudes and longitudes are given in NAD 83 coordinates.

2.) Distances to nearest section lines are measured perpendicularly.

**CERTIFICATE**

THIS IS TO CERTIFY THAT THE ABOVE PLAT WAS PREPARED FROM FIELD NOTES OF ACTUAL SURVEYS MADE BY ME OR UNDER MY SUPERVISION AND THAT THE LOCATION HAS BEEN STAKED ON THE GROUND AS SHOWN ON THE PLAT AND THAT THE SAME ARE TRUE AND CORRECT TO THE BEST OF MY KNOWLEDGE AND BELIEF.

REGISTERED LAND SURVEYOR  
 REGISTRATION NO. 107180  
 STATE OF COLORADO

PDOP = 1.5

**BASIS OF BEARINGS**

BASIS OF BEARINGS IS A G.P.S. OBSERVATION

**BASIS OF ELEVATION**

BENCH MARK (19 RDS) LOCATED IN THE SE 1/4 OF SECTION 16, T9S, R93W, 6th P.M., TAKEN FROM THE SOUTH MAMM PEAK, QUADRANGLE, COLORADO, 7.5 MINUTE QUAD. (TOPOGRAPHIC MAP) PUBLISHED BY THE UNITED STATES DEPARTMENT OF THE INTERIOR, GEOLOGICAL SURVEY. SAID ELEVATION IS MARKED AS BEING 7252 FEET.

**UELS, LLC**

Corporate Office \* 85 South 200 East  
 Vernal, UT 84078 \* (435) 789-1017

**LARAMIE ENERGY, LLC**

**NICHOLS 0994-13-21E (SURFACE LOCATION)**  
 SW 1/4 NE 1/4 SECTION 24, T9S, R94W, 6th P.M.  
 MESA COUNTY, COLORADO

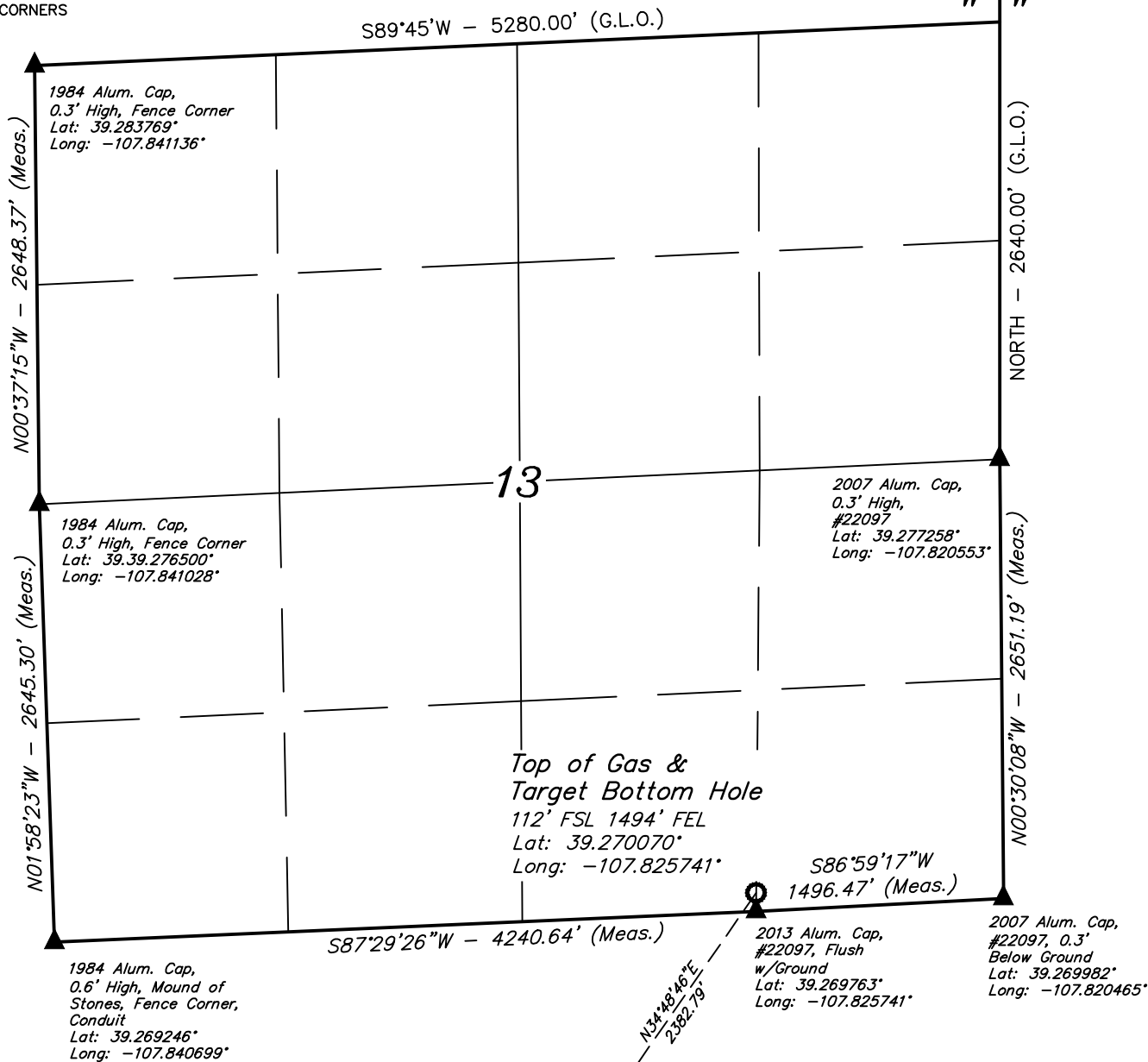
SURVEYED BY	CODY RICH, B.H.	08-30-16	SCALE
DRAWN BY	S.S.	03-01-17	1" = 1000'

**WELL LOCATION PLAT**

**LEGEND:**

- = 90° SYMBOL  
 ● = PROPOSED WELLHEAD.  
 ○ = TOP OF GAS & TARGET BOTTOM HOLE.  
 ▲ = SECTION CORNERS LOCATED.

**T9S, R94W, 6th P.M.**



**NICHOLS 0994-13-21E  
SURFACE LOCATION**

**CERTIFICATE**

THIS IS TO CERTIFY THAT THE ABOVE PLAT WAS PREPARED FROM FIELD NOTES OF ACTUAL SURVEYS MADE BY ME OR UNDER MY SUPERVISION AND THAT THE LOCATION HAS BEEN STAKED ON THE GROUND AS SHOWN ON THE PLAT AND THAT THE SAME ARE TRUE AND CORRECT TO THE BEST OF MY KNOWLEDGE AND BELIEF.

REGISTERED LAND SURVEYOR  
REGISTRATION NO. 19130  
STATE OF COLORADO

**NOTE:**

- 1.) All latitudes and longitudes are given in NAD 83 coordinates.
- 2.) Distances to nearest section lines are measured perpendicularly.

**BASIS OF BEARINGS**

BASIS OF BEARINGS IS A G.P.S. OBSERVATION

**BASIS OF ELEVATION**

BENCH MARK (19 RDS) LOCATED IN THE SE 1/4 OF SECTION 16, T9S, R93W, 6th P.M., TAKEN FROM THE SOUTH MAMM PEAK, QUADRANGLE, COLORADO, 7.5 MINUTE QUAD. (TOPOGRAPHIC MAP) PUBLISHED BY THE UNITED STATES DEPARTMENT OF THE INTERIOR, GEOLOGICAL SURVEY. SAID ELEVATION IS MARKED AS BEING 7252 FEET.

**UELS, LLC**

Corporate Office \* 85 South 200 East  
Vernal, UT 84078 \* (435) 789-1017

**LARAMIE ENERGY, LLC**

**NICHOLS 0994-13-21E (TARGET BOTTOM HOLE)**  
SW 1/4 SE 1/4, SECTION 13, T9S, R94W, 6th P.M.  
MESA COUNTY, COLORADO

SURVEYED BY	CODY RICH, B.H.	08-30-16	SCALE
DRAWN BY	S.S.	03-01-17	1" = 1000'

**WELL LOCATION PLAT**