

Rangely C-4 SITREP

March 27, 2017

FAC#: 449632

Doc#: 2226385

Date: 03-25-17

Spill Status	
Source Status:	SECURED

Today's Field Operations:

- Identify and mark contaminated soil for shovel crews. Scrape or shovel contaminated soil. Load recovered soil into dump trucks then transfer to land farm.
- Visually inspect and assess site for signs of storm water. Implement protections strategies to mitigate oil seepage.
- Install and replace sorbent boom, pom poms and activated carbon, as needed.
- Conduct weekly site impact assessment and report.
- Utilize portable decontamination stations for personnel and equipment, as needed.
- Monitor and repair wildlife deterrents, as needed.
- Respond to any notifications of impacted wildlife or wildlife entering the impacted area.

Summary of Previous OPS Day 03-25-2017:

Materials of Interest			
Material	Daily	Cumulative	UOM
Introduced Water for Flushing	0	7,670	bbl
Recovered Oily Liquid	0	11,179	bbl
Disposed Soil	18	2,344.50	y ³

Wildlife Impacts						
Type	Captured	Cleaned	Released	DOA	Died in Facility	
					Euth.	Other
Bird				2		2
Mammal				7		
Reptile						
Fish						
Other						

Rangely C-4 Rangely, Colorado

Environmental
Unit

Version 1

March 23, 2017

Page 1 of 1

DAILY SCAT REPORT

SCAT re-surveyed from 3-1000 to 3-1100 feet and 3-7450 to 3-7550 feet to assess the segments following implemented treatments. SCAT re-surveyed a total of ~300 feet within the dry drainage feature corridor. Weather safety stand-down in the AM resulting in no on-site operations and limited operations in the PM. Data reported below for other segments was observed 3/22/2017.

General status of oiling observations at the Rangely C-4 site to-date includes the following:

SCAT Divisions	Oil Distribution*	Thickness	Oil Type*	Oil Area Width*	% Cleaned	Cleanup Actions Taken to Date	Comments
1	NOO, Trace	Coat	Surface residue	Very Narrow and Narrow	~98%	Broom/hand tool crews, trash pumps, vac trucks, scraping, re-contouring, pom-poms, soft boom, backfilling, and temporary catchment basin	No operations
2	NOO, Trace	Coat	Surface residue	Very Narrow	~98%	Broom/hand tool crews, trash pumps, scraping, vac trucks, hot water flushing, pom-poms, soft boom, and temporary catchment basin	No operations
3	NOO, Sporadic, Patchy	Coat, Film	Mousse, Surface residue	Very Narrow and Narrow	~94%	drip trap, siphon, broom/hand tool crews, hard boom, hot water flushing, bank shaving, mechanical surface scrapping, pom-poms, soft boom, and temporary catchment basin	Mechanical surface scrapping at Siphon 5 and strategic installation of activated carbon pellets. Treatment priority areas are 3-425 to 3-600 and 3-900 to 3-1100 (drip trap 18); 3-7350 to 3-7550 (Siphon 5); 3-4800 to 3-5700; and 3-5700 to 3-7350
4	NOO	NA	NA	NA	NA	NA	No oil observed

*SCAT terminology is based on the standards and guidelines provided by NOAA in the document:

http://response.restoration.noaa.gov/sites/default/files/manual_shore_assess_aug2013.pdf

Prepared By: Daniel Nein

Date Approved: 3/23/17



Rangely C-4 Incident Picture Reporting - Overview Map



Scale: 1:11,500

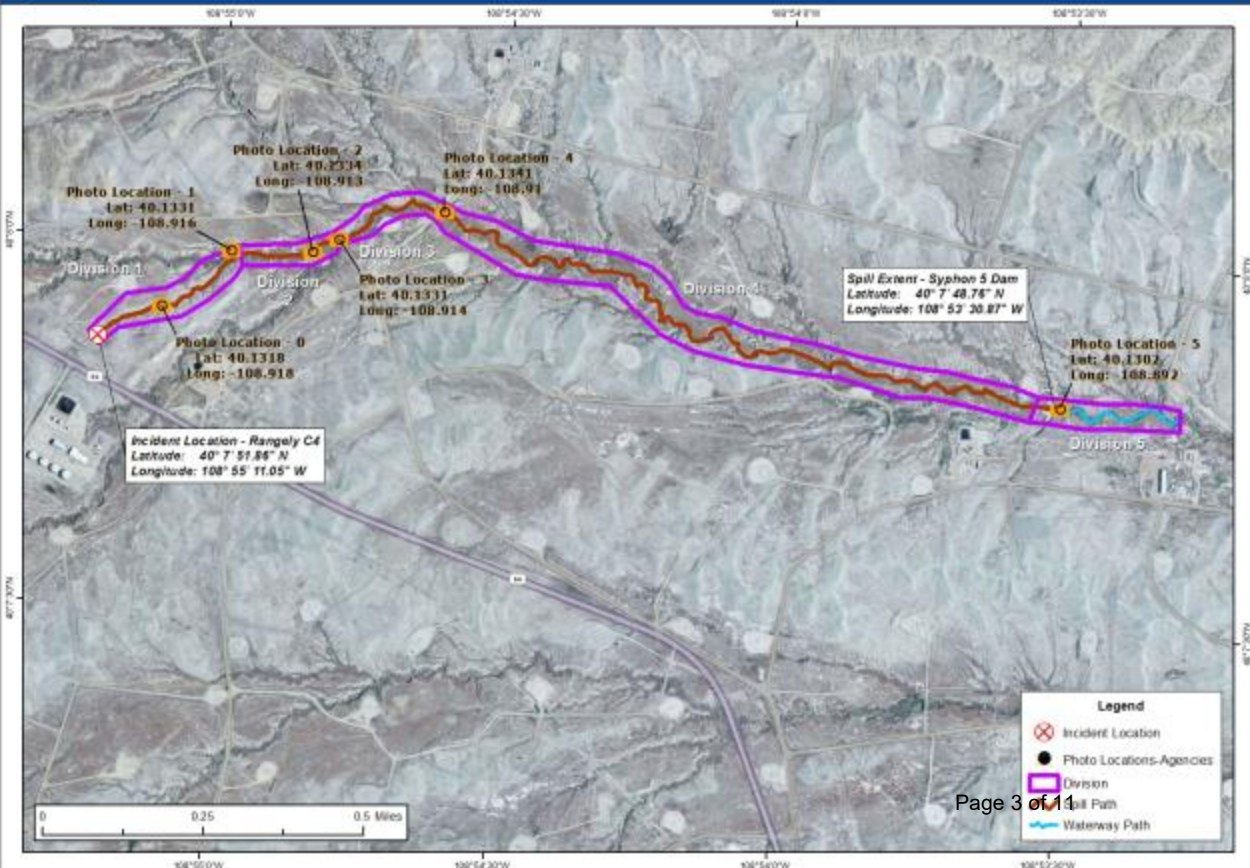


Photo Location 0
Upstream



Photo Location 0
Middle



Photo Location 0
Downstream



Photo Location 1
Upstream



Photo Location 1
Middle



Photo Location 1
Downstream



Photo Location 2
Upstream



Photo Location 2
Middle



Photo Location 2
Downstream



Photo Location 3
Downstream



Photo Location 4
Upstream



Photo Location 4
Middle



Photo Location 4
Downstream



Photo Location 5
Upstream



Photo Location 5
Downstream

