

Rangely C-4 SITREP
March 11, 2017

Spill Status	
Source Status:	SECURED

Today's Field Operations:

- Scrape top layer of contaminated soil in Division 1. Load recovered soil into dump truck to take to land farm.
- Conduct pumping of the liquid from Division 2 to Division 3 for collection operations in Division 3.
- Conduct brooming operations of liquid in Divisions 3.
- Water washing operations in Division 3.
- Decontamination stations established and working in Divisions 1, 2, and 3.
- Deploying wildlife deterrents in identified areas.

Summary of Previous Day:

Recovered Materials					
Type	Since Last Report		Cumulative Recovered		UOM
	Recovered	Disposed	Recovered	Disposed	
Oily Liquid	87		2,803		bbls
Solid		88		730	y ³

Wildlife Impacts						
Type	Captured	Cleaned	Released	DOA	Died in Facility	
					Euth.	Other
Birds				2		2
Mammal				1		
Reptile						
Fish						
Other						

Rangely C-4
Rangely, Colorado

Environmental
Unit

Version 1

March 10, 2017

Page 1 of 1

DAILY SCAT REPORT

SCAT surveys were conducted from 03+4800 through 03+7300 to complete a full survey of the affected area for the week. SCAT re-surveyed from 0+00 through 0+1300 to assess the segments following the implemented treatments. SCAT surveyed a total of ~3,800 feet of stream corridor.

General status of oiling observations at the Rangely C-4 site to-date includes the following:

SCAT Divisions	Oil Distribution*	Thickness	Oil Type*	Oil Area Width*	% Cleaned	Cleanup Actions Taken to Date	Comments
1	Sporadic to Patchy. One continuous area	TO/CV/CT	Fresh oil	Wide, medium and narrow	~75%	Broom crews, trash pumps, vac trucks, excavation	Excavation had occurred to ~SCAT segment 1+800 as of 1430, 3/10/17. Sporadic oiling has shown up in excavated areas due to moist soil drying and oil become exposed.
2	Continuous	TO/CV	Fresh oil	Wide, medium and narrow	~<15%	Broom crews, trash pumps, vac trucks, hot water flushing	More recovered in this Division than yesterday.
3	Continuous	TO/CV	Fresh oil	Wide, medium and narrow	Undetermined	Drip trap, Siphon	Broom crews or flushing will be needed in this division due to access issues
4	NA	NA	NA	NA	NA	NA	---

*SCAT terminology is based on the standards and guidelines provided by NOAA in the document:
http://response.restoration.noaa.gov/sites/default/files/manual_shore_assess_aug2013.pdf

Prepared By: Sean Moriarty

Date Approved: 3/10/17



Rangely C-4 Incident Picture Reporting - Overview Map

Scale: 1:11,509

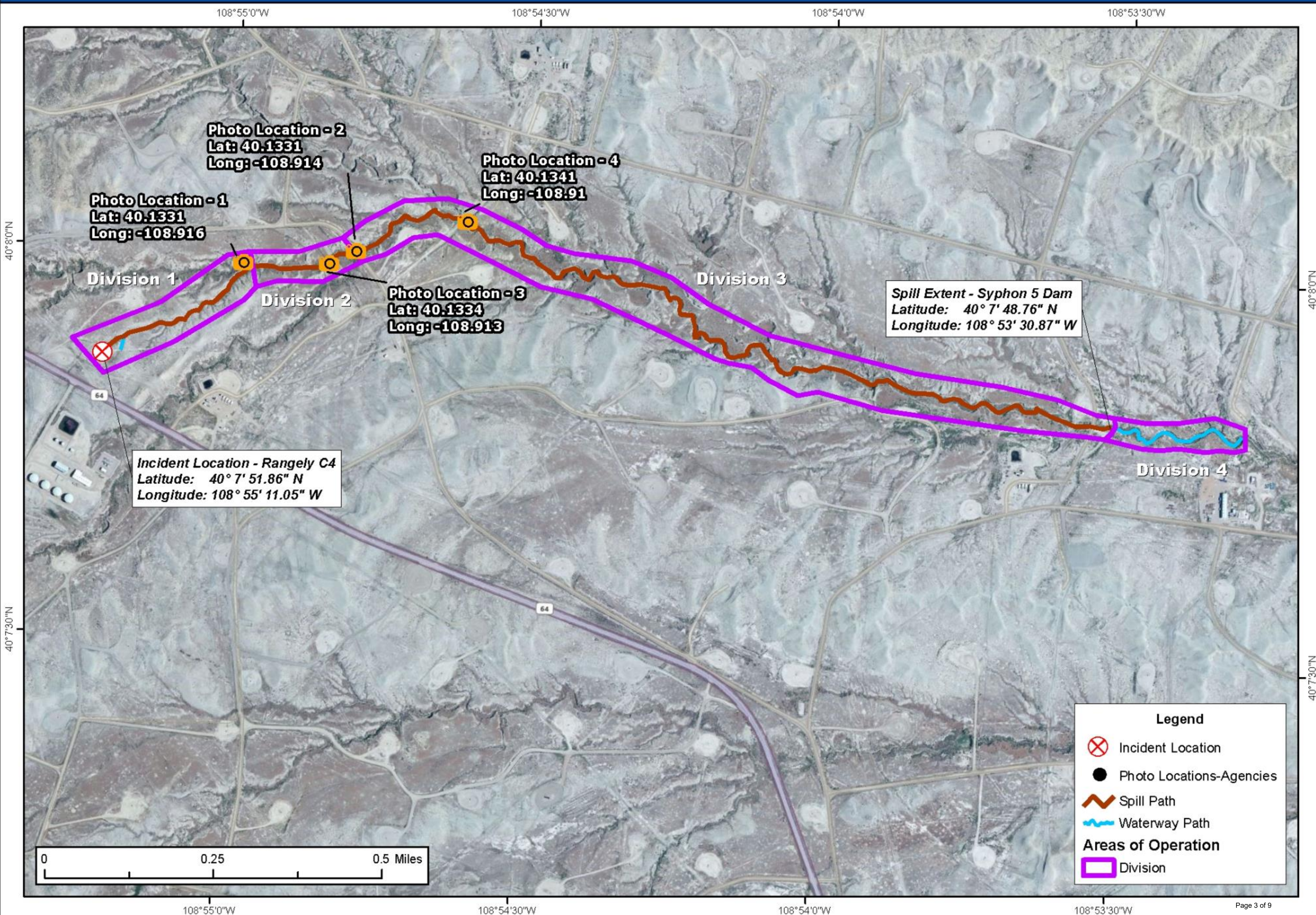


Photo Location1
Upstream

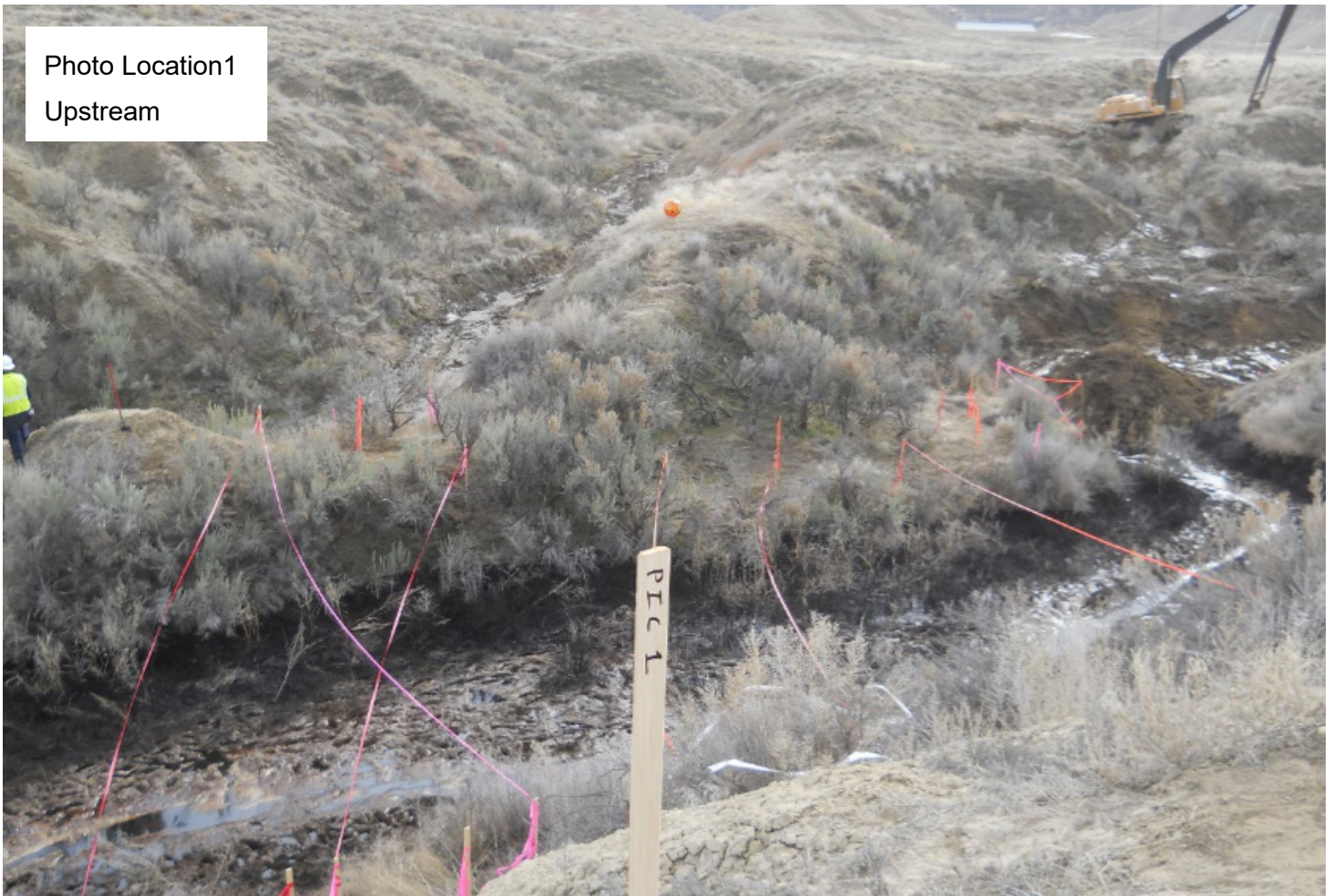


Photo Location 1
Middle



Photo Location 1
Downstream

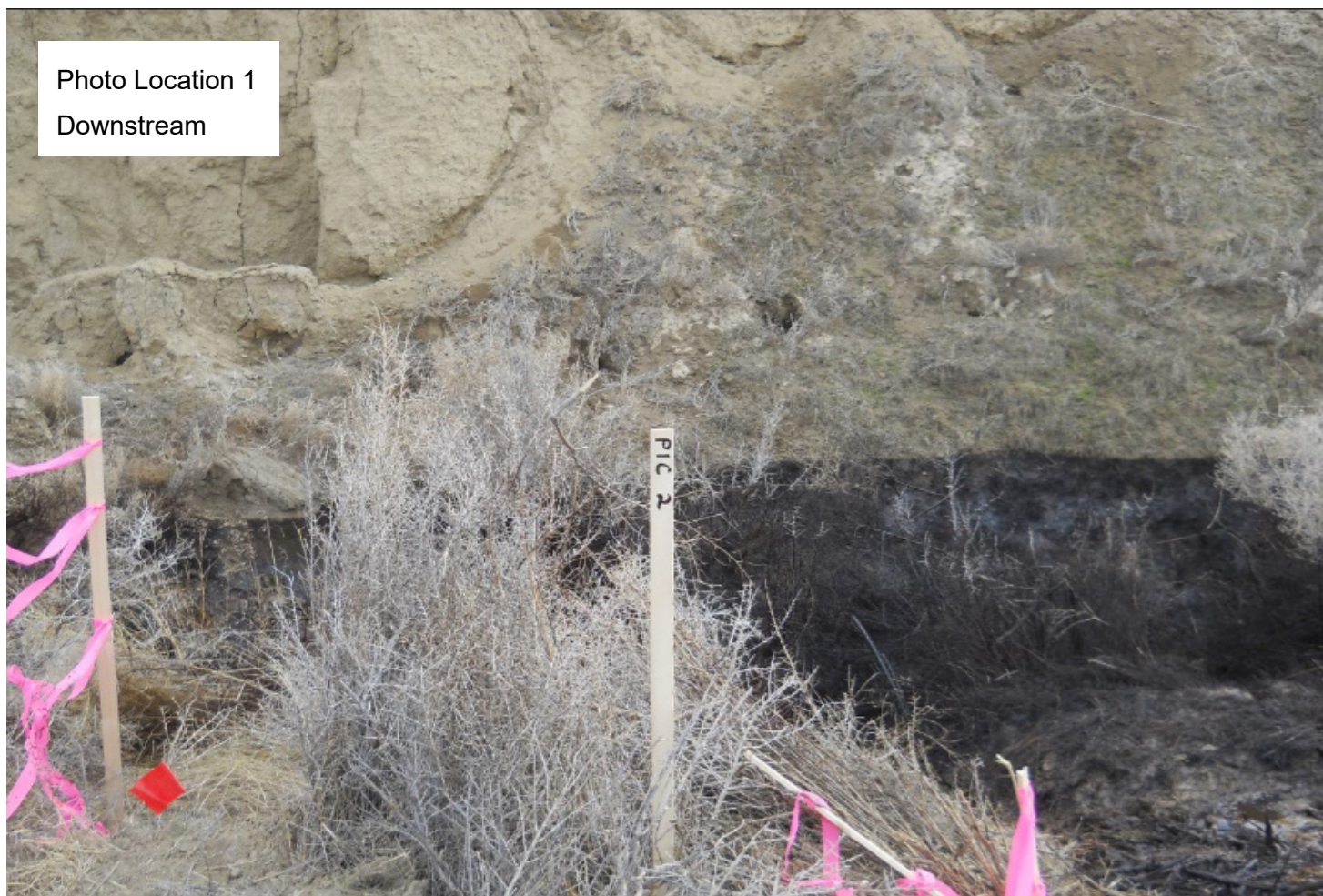


Photo Location 2
Middle



Photo Location 2
Upstream



Photo Location 2
Downstream



Photo Location 2
Downstream



Photo Location 3
Downstream



Photo Location 4
Middle



Photo Location 4
Upstream



Photo Location 4
Downstream

