

PETROLEUM DEVELOPMENT CORP DJ Basin

Well Name: **Jacobucci 32K-403**

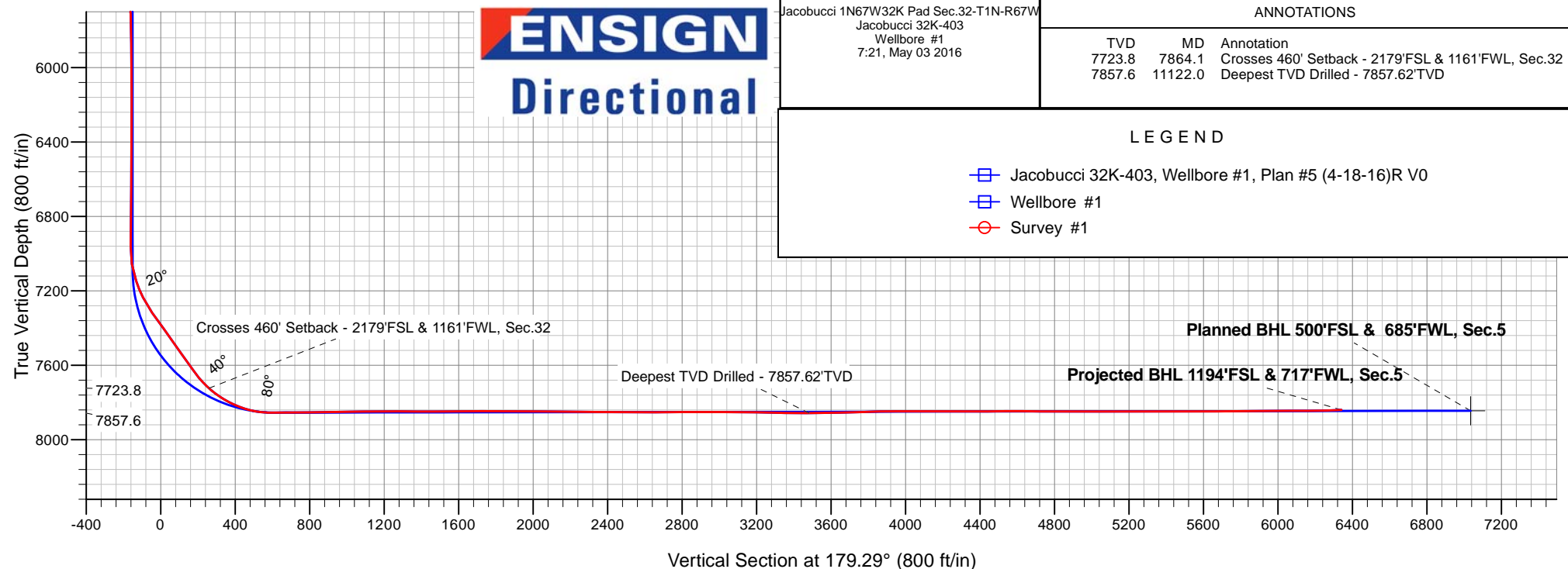
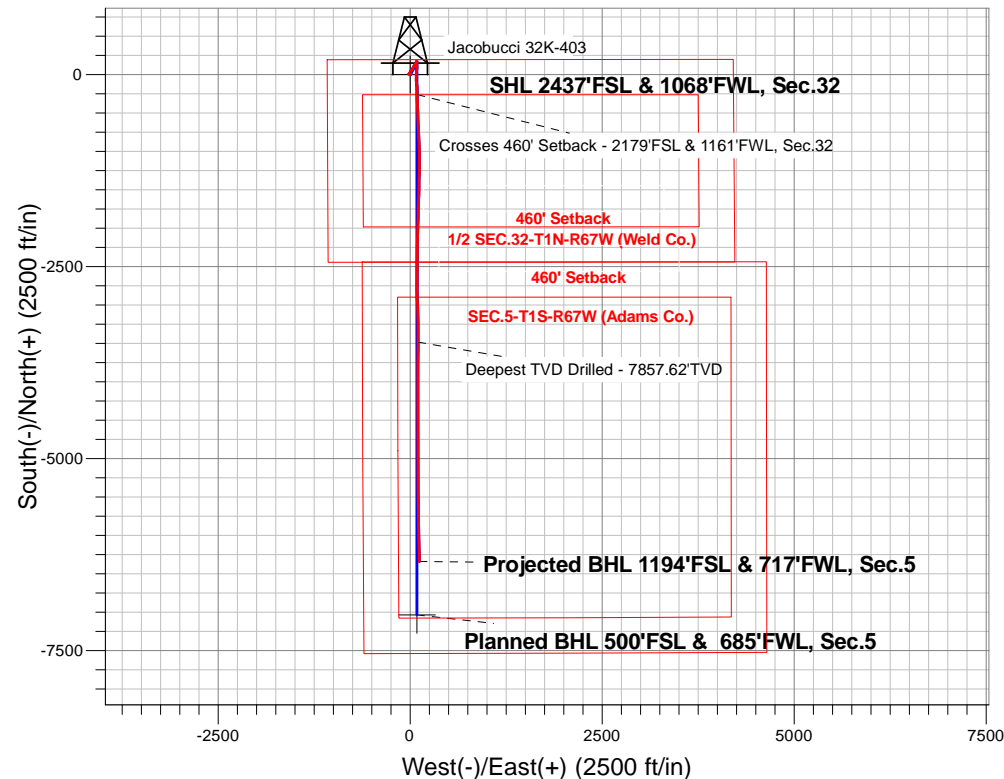
Surface Location: Jacobucci 1N67W32K Pad Sec.32-T1N-R67W
North American Datum 1983 , US State Plane 1983, Colorado Northern Zone
Ground Elevation: 5048.0

+N/-S	+E/-W	Northing	Eastng	Latitude	Longitude	Slot
0.0	0.0	1245939.148	162493.58	40.007030	-104.919920	

Ensjon Rq #121 - RKB 13.5'WELL @ 5061.5ft (Ensjon Rq #121 - RKB 13.5')

FINAL SURVEY

**Projected Bottom Hole Location
13981'MD 7840'TVD 6340'S & 119'E of SHL
92.2 degree Incl @ 179.8 degree AZM**





PETROLEUM DEVELOPMENT CORP DJ Basin

SEC.32-T1N-R67W

Jacobucci 1N67W32K Pad Sec.32-T1N-R67W

Jacobucci 32K-403

Wellbore #1

Survey: Survey #1

Standard Survey Report

03 May, 2016

Company:	PETROLEUM DEVELOPMENT CORP DJ Basin	Local Co-ordinate Reference:	Well Jacobucci 32K-403
Project:	SEC.32-T1N-R67W	TVD Reference:	WELL @ 5061.5ft (Ensign Rig #121 - RKB 13.5')
Site:	Jacobucci 1N67W32K Pad Sec.32-T1N-R67W	MD Reference:	WELL @ 5061.5ft (Ensign Rig #121 - RKB 13.5')
Well:	Jacobucci 32K-403	North Reference:	True
Wellbore:	Wellbore #1	Survey Calculation Method:	Minimum Curvature
Design:	Wellbore #1	Database:	US_EDM

Project	SEC.32-T1N-R67W, Weld County, CO		
Map System:	US State Plane 1983	System Datum:	Mean Sea Level
Geo Datum:	North American Datum 1983		Using Well Reference Point
Map Zone:	Colorado Northern Zone		Using geodetic scale factor

Site	Jacobucci 1N67W32K Pad Sec.32-T1N-R67W				
Site Position:		Northing:	1,245,939.37 usft	Latitude:	40.007030
From:	Lat/Long	Easting:	3,162,524.40 usft	Longitude:	-104.919810
Position Uncertainty:	0.0 ft	Slot Radius:	13-3/16 "	Grid Convergence:	0.37 °

Well	Jacobucci 32K-403					
Well Position	+N/-S	0.0 ft	Northing:	1,245,939.14 usft	Latitude:	40.007030
	+E/-W	0.0 ft	Easting:	3,162,493.59 usft	Longitude:	-104.919920
Position Uncertainty		0.0 ft	Wellhead Elevation:	ft	Ground Level:	5,048.0 ft

Wellbore	Wellbore #1				
Magnetics	Model Name	Sample Date	Declination (°)	Dip Angle (°)	Field Strength (nT)
	IGRF2010	4/18/2016	8.26	66.54	52,397

Design	Wellbore #1				
Audit Notes:					
Version:	1.0	Phase:	ACTUAL	Tie On Depth:	0.0
Vertical Section:	Depth From (TVD) (ft)	+N/-S (ft)	+E/-W (ft)	Direction (°)	
	0.0	0.0	0.0	179.29	

Survey Program	Date	5/3/2016			
From (ft)	To (ft)	Survey (Wellbore)	Tool Name	Description	
170.0	13,981.0	Survey #1 (Wellbore #1)	MWD	MWD - Standard	

Survey									
Measured Depth (ft)	Inclination (°)	Azimuth (°)	Vertical Depth (ft)	+N/-S (ft)	+E/-W (ft)	Vertical Section (ft)	Dogleg Rate (°/100usft)	Build Rate (°/100usft)	Turn Rate (°/100usft)
0.0	0.00	0.00	0.0	0.0	0.0	0.0	0.00	0.00	0.00
1.0	0.00	122.20	1.0	0.0	0.0	0.0	0.18	0.18	0.00
SHL 2437'FSL & 1068'FWL, Sec.32									
170.0	0.30	122.20	170.0	-0.2	0.4	0.2	0.18	0.18	0.00
265.0	0.30	96.20	265.0	-0.4	0.8	0.4	0.14	0.00	-27.37
361.0	0.50	68.90	361.0	-0.3	1.5	0.3	0.28	0.21	-28.44
457.0	0.70	69.60	457.0	0.1	2.4	-0.1	0.21	0.21	0.73
552.0	0.80	55.00	552.0	0.7	3.5	-0.6	0.23	0.11	-15.37
649.0	1.00	37.80	649.0	1.7	4.6	-1.7	0.34	0.21	-17.73
744.0	1.40	49.60	743.9	3.1	6.0	-3.1	0.49	0.42	12.42
840.0	1.80	38.70	839.9	5.1	7.8	-5.0	0.52	0.42	-11.35

Company:	PETROLEUM DEVELOPMENT CORP DJ Basin	Local Co-ordinate Reference:	Well Jacobucci 32K-403
Project:	SEC.32-T1N-R67W	TVD Reference:	WELL @ 5061.5ft (Ensign Rig #121 - RKB 13.5')
Site:	Jacobucci 1N67W32K Pad Sec.32-T1N-R67W	MD Reference:	WELL @ 5061.5ft (Ensign Rig #121 - RKB 13.5')
Well:	Jacobucci 32K-403	North Reference:	True
Wellbore:	Wellbore #1	Survey Calculation Method:	Minimum Curvature
Design:	Wellbore #1	Database:	US_EDM

Survey									
Measured Depth (ft)	Inclination (°)	Azimuth (°)	Vertical Depth (ft)	+N-S (ft)	+E-W (ft)	Vertical Section (ft)	Dogleg Rate (°/100usft)	Build Rate (°/100usft)	Turn Rate (°/100usft)
935.0	0.40	272.60	934.9	6.2	8.4	-6.1	2.17	-1.47	-132.74
1,032.0	0.90	255.40	1,031.9	6.1	7.3	-6.0	0.55	0.52	-17.73
1,128.0	1.20	267.40	1,127.9	5.8	5.6	-5.8	0.39	0.31	12.50
1,224.0	1.20	265.80	1,223.9	5.7	3.6	-5.7	0.03	0.00	-1.67
1,319.0	1.10	261.20	1,318.8	5.5	1.7	-5.5	0.14	-0.11	-4.84
1,415.0	1.20	279.50	1,414.8	5.5	-0.2	-5.5	0.39	0.10	19.06
1,511.0	1.60	268.80	1,510.8	5.7	-2.5	-5.7	0.50	0.42	-11.15
1,606.0	1.40	273.30	1,605.8	5.7	-5.0	-5.8	0.24	-0.21	4.74
1,702.0	1.80	268.90	1,701.7	5.7	-7.7	-5.8	0.44	0.42	-4.58
1,795.0	1.70	280.20	1,794.7	6.0	-10.5	-6.1	0.39	-0.11	12.15
1,895.0	1.20	290.80	1,894.6	6.6	-13.0	-6.8	0.57	-0.50	10.60
1,990.0	1.10	283.70	1,989.6	7.2	-14.8	-7.3	0.18	-0.11	-7.47
2,086.0	0.50	252.80	2,085.6	7.3	-16.1	-7.5	0.75	-0.63	-32.19
2,182.0	0.30	324.70	2,181.6	7.3	-16.6	-7.5	0.52	-0.21	74.90
2,278.0	0.40	326.40	2,277.6	7.8	-16.9	-8.0	0.10	0.10	1.77
2,374.0	0.60	9.00	2,373.6	8.6	-17.1	-8.8	0.43	0.21	44.38
2,470.0	1.10	7.00	2,469.6	10.0	-16.9	-10.2	0.52	0.52	-2.08
2,566.0	2.60	42.40	2,565.5	12.5	-15.3	-12.7	1.89	1.56	36.88
2,662.0	4.40	51.30	2,661.4	16.4	-10.9	-16.6	1.95	1.88	9.27
2,757.0	5.10	37.60	2,756.0	22.1	-5.5	-22.1	1.40	0.74	-14.42
2,853.0	5.60	24.10	2,851.6	29.7	-1.0	-29.7	1.41	0.52	-14.06
2,949.0	6.30	23.00	2,947.1	38.8	3.0	-38.8	0.74	0.73	-1.15
3,044.0	6.60	35.50	3,041.5	48.1	8.2	-48.0	1.51	0.32	13.16
3,140.0	9.00	44.00	3,136.6	58.0	16.6	-57.8	2.77	2.50	8.85
3,236.0	9.50	37.60	3,231.4	69.7	26.6	-69.3	1.19	0.52	-6.67
3,332.0	9.30	23.20	3,326.1	83.1	34.5	-82.6	2.45	-0.21	-15.00
3,428.0	9.50	28.10	3,420.8	97.2	41.3	-96.7	0.86	0.21	5.10
3,524.0	9.70	32.20	3,515.5	111.0	49.4	-110.4	0.74	0.21	4.27
3,619.0	7.70	25.70	3,609.4	123.5	56.4	-122.8	2.34	-2.11	-6.84
3,715.0	6.60	35.20	3,704.6	133.8	62.4	-133.1	1.68	-1.15	9.90
3,811.0	7.50	46.90	3,799.9	142.6	70.1	-141.7	1.76	0.94	12.19
3,907.0	6.40	42.20	3,895.2	150.9	78.3	-149.9	1.29	-1.15	-4.90
4,003.0	5.50	41.70	3,990.7	158.3	84.9	-157.2	0.94	-0.94	-0.52
4,098.0	3.00	30.90	4,085.4	163.8	89.2	-162.7	2.75	-2.63	-11.37
4,194.0	1.20	345.80	4,181.3	166.9	90.3	-165.8	2.41	-1.88	-46.98
4,290.0	1.30	338.00	4,277.3	168.9	89.6	-167.8	0.21	0.10	-8.13
4,386.0	1.20	329.10	4,373.3	170.8	88.7	-169.7	0.23	-0.10	-9.27
4,482.0	0.30	335.60	4,469.3	171.9	88.1	-170.8	0.94	-0.94	6.77
4,578.0	0.50	283.70	4,565.3	172.2	87.6	-171.1	0.41	0.21	-54.06
4,673.0	0.40	292.90	4,660.3	172.4	86.9	-171.3	0.13	-0.11	9.68
4,769.0	0.50	314.70	4,756.3	172.9	86.3	-171.8	0.20	0.10	22.71
4,865.0	0.40	266.30	4,852.3	173.1	85.6	-172.1	0.40	-0.10	-50.42
4,960.0	1.70	221.70	4,947.3	172.1	84.4	-171.0	1.52	1.37	-46.95

Company:	PETROLEUM DEVELOPMENT CORP DJ Basin	Local Co-ordinate Reference:	Well Jacobucci 32K-403
Project:	SEC.32-T1N-R67W	TVD Reference:	WELL @ 5061.5ft (Ensign Rig #121 - RKB 13.5')
Site:	Jacobucci 1N67W32K Pad Sec.32-T1N-R67W	MD Reference:	WELL @ 5061.5ft (Ensign Rig #121 - RKB 13.5')
Well:	Jacobucci 32K-403	North Reference:	True
Wellbore:	Wellbore #1	Survey Calculation Method:	Minimum Curvature
Design:	Wellbore #1	Database:	US_EDM

Survey										
Measured Depth (ft)	Inclination (°)	Azimuth (°)	Vertical Depth (ft)	+N/-S (ft)	+E/-W (ft)	Vertical Section (ft)	Dogleg Rate (°/100usft)	Build Rate (°/100usft)	Turn Rate (°/100usft)	
5,056.0	1.60	220.60	5,043.2	170.0	82.5	-168.9	0.11	-0.10	-1.15	
5,152.0	1.40	241.50	5,139.2	168.4	80.6	-167.4	0.60	-0.21	21.77	
5,247.0	1.00	250.00	5,234.2	167.6	78.8	-166.6	0.46	-0.42	8.95	
5,343.0	0.40	146.60	5,330.2	167.0	78.2	-166.0	1.21	-0.63	-107.71	
5,439.0	0.60	164.40	5,426.2	166.2	78.6	-165.3	0.26	0.21	18.54	
5,535.0	0.80	179.30	5,522.2	165.1	78.7	-164.1	0.28	0.21	15.52	
5,631.0	0.80	165.20	5,618.1	163.8	78.9	-162.8	0.20	0.00	-14.69	
5,726.0	1.00	170.00	5,713.1	162.3	79.2	-161.3	0.22	0.21	5.05	
5,822.0	0.80	174.60	5,809.1	160.8	79.4	-159.8	0.22	-0.21	4.79	
5,918.0	1.10	165.40	5,905.1	159.3	79.7	-158.3	0.35	0.31	-9.58	
6,014.0	0.70	150.10	6,001.1	157.9	80.2	-156.9	0.48	-0.42	-15.94	
6,110.0	0.30	129.20	6,097.1	157.2	80.7	-156.2	0.45	-0.42	-21.77	
6,206.0	0.10	99.30	6,193.1	157.0	81.0	-156.0	0.23	-0.21	-31.15	
6,301.0	0.40	234.30	6,288.1	156.8	80.8	-155.8	0.50	0.32	142.11	
6,397.0	0.20	350.30	6,384.1	156.8	80.5	-155.8	0.54	-0.21	120.83	
6,493.0	0.60	330.70	6,480.1	157.4	80.2	-156.4	0.43	0.42	-20.42	
6,589.0	0.90	358.60	6,576.1	158.6	80.0	-157.6	0.48	0.31	29.06	
6,685.0	0.70	349.10	6,672.1	159.9	79.8	-158.9	0.25	-0.21	-9.90	
6,781.0	1.10	9.10	6,768.1	161.4	79.9	-160.4	0.52	0.42	20.83	
6,877.0	1.10	83.10	6,864.0	162.4	80.9	-161.4	1.38	0.00	77.08	
6,924.0	1.10	69.80	6,911.0	162.6	81.8	-161.6	0.54	0.00	-28.30	
6,972.0	1.20	115.00	6,959.0	162.6	82.7	-161.5	1.85	0.21	94.17	
7,068.0	8.00	175.30	7,054.7	155.5	84.2	-154.4	7.79	7.08	62.81	
7,163.0	19.40	179.30	7,146.8	133.0	84.9	-132.0	12.03	12.00	4.21	
7,210.0	22.20	177.20	7,190.8	116.4	85.4	-115.3	6.16	5.96	-4.47	
7,259.0	26.50	181.20	7,235.4	96.2	85.6	-95.1	9.39	8.78	8.16	
7,355.0	34.80	184.80	7,317.9	47.4	82.9	-46.3	8.85	8.65	3.75	
7,403.0	35.80	183.90	7,357.1	19.7	80.8	-18.7	2.35	2.08	-1.88	
7,450.0	36.10	181.60	7,395.1	-7.8	79.5	8.8	2.94	0.64	-4.89	
7,499.0	36.30	178.40	7,434.7	-36.8	79.5	37.8	3.88	0.41	-6.53	
7,546.0	36.10	178.40	7,472.6	-64.5	80.2	65.5	0.43	-0.43	0.00	
7,595.0	35.70	177.40	7,512.3	-93.2	81.3	94.2	1.45	-0.82	-2.04	
7,642.0	35.00	173.50	7,550.7	-120.3	83.4	121.4	5.03	-1.49	-8.30	
7,691.0	34.20	175.10	7,591.0	-148.0	86.2	149.1	2.47	-1.63	3.27	
7,738.0	35.30	175.80	7,629.6	-174.7	88.3	175.8	2.49	2.34	1.49	
7,786.0	40.10	176.00	7,667.6	-204.0	90.4	205.1	10.00	10.00	0.42	
7,834.0	44.60	178.10	7,703.0	-236.3	92.1	237.4	9.83	9.38	4.38	
7,882.0	50.00	180.20	7,735.6	-271.5	92.6	272.6	11.70	11.25	4.38	
7,930.0	55.80	179.80	7,764.5	-309.8	92.6	310.9	12.10	12.08	-0.83	
7,978.0	59.90	177.70	7,790.1	-350.4	93.5	351.5	9.31	8.54	-4.38	
8,026.0	66.00	178.30	7,811.9	-393.1	95.0	394.3	12.76	12.71	1.25	
8,074.0	71.10	178.60	7,829.4	-437.8	96.2	438.9	10.64	10.63	0.63	
8,121.0	76.30	177.90	7,842.6	-482.8	97.5	484.0	11.16	11.06	-1.49	

Company:	PETROLEUM DEVELOPMENT CORP DJ Basin	Local Co-ordinate Reference:	Well Jacobucci 32K-403
Project:	SEC.32-T1N-R67W	TVD Reference:	WELL @ 5061.5ft (Ensign Rig #121 - RKB 13.5')
Site:	Jacobucci 1N67W32K Pad Sec.32-T1N-R67W	MD Reference:	WELL @ 5061.5ft (Ensign Rig #121 - RKB 13.5')
Well:	Jacobucci 32K-403	North Reference:	True
Wellbore:	Wellbore #1	Survey Calculation Method:	Minimum Curvature
Design:	Wellbore #1	Database:	US_EDM

Survey									
Measured Depth (ft)	Inclination (°)	Azimuth (°)	Vertical Depth (ft)	+N/-S (ft)	+E/-W (ft)	Vertical Section (ft)	Dogleg Rate (°/100usft)	Build Rate (°/100usft)	Turn Rate (°/100usft)
8,169.0	82.80	178.80	7,851.3	-530.0	98.9	531.2	13.67	13.54	1.88
8,217.0	88.80	179.00	7,854.8	-577.8	99.8	579.0	12.51	12.50	0.42
8,248.0	90.20	177.90	7,855.1	-608.8	100.7	610.0	5.74	4.52	-3.55
8,344.0	90.20	175.10	7,854.8	-704.6	106.5	705.9	2.92	0.00	-2.92
8,392.0	90.80	175.60	7,854.3	-752.5	110.4	753.8	1.63	1.25	1.04
8,440.0	90.90	176.70	7,853.6	-800.4	113.6	801.7	2.30	0.21	2.29
8,488.0	90.70	177.70	7,853.0	-848.3	116.0	849.7	2.12	-0.42	2.08
8,536.0	91.20	178.60	7,852.2	-896.3	117.5	897.6	2.14	1.04	1.88
8,584.0	91.60	179.30	7,851.0	-944.2	118.4	945.6	1.68	0.83	1.46
8,631.0	91.00	179.70	7,849.9	-991.2	118.8	992.6	1.53	-1.28	0.85
8,727.0	90.90	180.50	7,848.3	-1,087.2	118.6	1,088.6	0.84	-0.10	0.83
8,823.0	88.80	180.00	7,848.6	-1,183.2	118.2	1,184.6	2.25	-2.19	-0.52
8,919.0	90.00	181.40	7,849.6	-1,279.2	117.1	1,280.5	1.92	1.25	1.46
9,014.0	90.40	181.20	7,849.3	-1,374.2	114.9	1,375.5	0.47	0.42	-0.21
9,110.0	90.00	180.40	7,848.9	-1,470.1	113.6	1,471.4	0.93	-0.42	-0.83
9,206.0	90.20	182.30	7,848.8	-1,566.1	111.3	1,567.4	1.99	0.21	1.98
9,302.0	90.50	181.90	7,848.2	-1,662.1	107.8	1,663.3	0.52	0.31	-0.42
9,398.0	90.20	181.20	7,847.6	-1,758.0	105.2	1,759.2	0.79	-0.31	-0.73
9,493.0	89.80	180.50	7,847.6	-1,853.0	103.8	1,854.1	0.85	-0.42	-0.74
9,589.0	89.50	182.10	7,848.2	-1,949.0	101.6	1,950.1	1.70	-0.31	1.67
9,686.0	90.20	182.60	7,848.4	-2,045.9	97.6	2,046.9	0.89	0.72	0.52
9,781.0	89.20	181.40	7,848.9	-2,140.8	94.3	2,141.8	1.64	-1.05	-1.26
9,877.0	89.20	180.90	7,850.3	-2,236.8	92.4	2,237.8	0.52	0.00	-0.52
9,973.0	89.30	180.40	7,851.5	-2,332.8	91.3	2,333.7	0.53	0.10	-0.52
10,069.0	89.30	179.70	7,852.7	-2,428.8	91.2	2,429.7	0.73	0.00	-0.73
10,165.0	90.00	180.50	7,853.3	-2,524.8	91.0	2,525.7	1.11	0.73	0.83
10,260.0	89.80	180.00	7,853.4	-2,619.8	90.6	2,620.7	0.57	-0.21	-0.53
10,356.0	90.60	180.20	7,853.1	-2,715.8	90.5	2,716.7	0.86	0.83	0.21
10,452.0	90.80	179.80	7,851.9	-2,811.8	90.5	2,812.7	0.47	0.21	-0.42
10,547.0	90.00	178.40	7,851.3	-2,906.7	91.9	2,907.7	1.70	-0.84	-1.47
10,643.0	89.40	177.40	7,851.8	-3,002.7	95.5	3,003.6	1.21	-0.63	-1.04
10,739.0	89.70	178.60	7,852.5	-3,098.6	98.8	3,099.6	1.29	0.31	1.25
10,835.0	89.30	178.40	7,853.4	-3,194.6	101.3	3,195.6	0.47	-0.42	-0.21
10,931.0	88.70	179.10	7,855.0	-3,290.5	103.4	3,291.6	0.96	-0.63	0.73
11,026.0	89.20	180.40	7,856.8	-3,385.5	103.8	3,386.5	1.47	0.53	1.37
11,122.0	89.80	180.70	7,857.6	-3,481.5	102.9	3,482.5	0.70	0.63	0.31
11,218.0	91.40	180.70	7,856.6	-3,577.5	101.7	3,578.5	1.67	1.67	0.00
11,313.0	91.60	180.50	7,854.1	-3,672.5	100.7	3,673.4	0.30	0.21	-0.21
11,410.0	91.50	180.20	7,851.5	-3,769.4	100.2	3,770.4	0.33	-0.10	-0.31
11,505.0	92.00	180.00	7,848.6	-3,864.4	100.0	3,865.3	0.57	0.53	-0.21
11,602.0	89.40	179.70	7,847.4	-3,961.4	100.2	3,962.3	2.70	-2.68	-0.31
11,698.0	89.90	180.90	7,848.0	-4,057.4	99.7	4,058.3	1.35	0.52	1.25
11,793.0	90.20	180.70	7,847.9	-4,152.3	98.4	4,153.2	0.38	0.32	-0.21
11,889.0	90.00	179.70	7,847.8	-4,248.3	98.1	4,249.2	1.06	-0.21	-1.04

Company:	PETROLEUM DEVELOPMENT CORP DJ Basin	Local Co-ordinate Reference:	Well Jacobucci 32K-403
Project:	SEC.32-T1N-R67W	TVD Reference:	WELL @ 5061.5ft (Ensign Rig #121 - RKB 13.5')
Site:	Jacobucci 1N67W32K Pad Sec.32-T1N-R67W	MD Reference:	WELL @ 5061.5ft (Ensign Rig #121 - RKB 13.5')
Well:	Jacobucci 32K-403	North Reference:	True
Wellbore:	Wellbore #1	Survey Calculation Method:	Minimum Curvature
Design:	Wellbore #1	Database:	US_EDM

Survey									
Measured Depth (ft)	Inclination (°)	Azimuth (°)	Vertical Depth (ft)	+N/-S (ft)	+E/-W (ft)	Vertical Section (ft)	Dogleg Rate (°/100usft)	Build Rate (°/100usft)	Turn Rate (°/100usft)
11,985.0	89.50	179.00	7,848.2	-4,344.3	99.2	4,345.2	0.90	-0.52	-0.73
12,081.0	90.70	180.00	7,848.0	-4,440.3	100.0	4,441.2	1.63	1.25	1.04
12,177.0	90.50	179.50	7,847.0	-4,536.3	100.4	4,537.2	0.56	-0.21	-0.52
12,273.0	89.30	179.80	7,847.2	-4,632.3	101.0	4,633.2	1.29	-1.25	0.31
12,368.0	89.50	179.50	7,848.2	-4,727.3	101.6	4,728.2	0.38	0.21	-0.32
12,464.0	90.40	180.50	7,848.2	-4,823.3	101.6	4,824.2	1.40	0.94	1.04
12,560.0	89.90	179.70	7,848.0	-4,919.3	101.4	4,920.2	0.98	-0.52	-0.83
12,656.0	89.20	179.50	7,848.8	-5,015.3	102.1	5,016.2	0.76	-0.73	-0.21
12,752.0	90.20	180.20	7,849.3	-5,111.3	102.3	5,112.2	1.27	1.04	0.73
12,848.0	89.70	179.70	7,849.3	-5,207.3	102.4	5,208.2	0.74	-0.52	-0.52
12,944.0	90.10	180.00	7,849.5	-5,303.3	102.7	5,304.2	0.52	0.42	0.31
13,040.0	90.30	179.50	7,849.2	-5,399.3	103.1	5,400.2	0.56	0.21	-0.52
13,136.0	90.30	179.00	7,848.7	-5,495.3	104.4	5,496.2	0.52	0.00	-0.52
13,232.0	90.00	179.70	7,848.4	-5,591.3	105.4	5,592.2	0.79	-0.31	0.73
13,328.0	90.90	179.30	7,847.7	-5,687.3	106.3	5,688.1	1.03	0.94	-0.42
13,424.0	90.00	179.00	7,846.9	-5,783.3	107.7	5,784.1	0.99	-0.94	-0.31
13,519.0	90.70	179.10	7,846.3	-5,878.2	109.3	5,879.1	0.74	0.74	0.11
13,615.0	89.90	179.00	7,845.8	-5,974.2	110.9	5,975.1	0.84	-0.83	-0.10
13,711.0	90.40	178.60	7,845.6	-6,070.2	112.9	6,071.1	0.67	0.52	-0.42
13,806.0	90.00	177.50	7,845.2	-6,165.1	116.1	6,166.1	1.23	-0.42	-1.16
13,901.0	92.20	179.80	7,843.4	-6,260.1	118.4	6,261.1	3.35	2.32	2.42
13,981.0	92.20	179.80	7,840.3	-6,340.0	118.6	6,341.0	0.00	0.00	0.00
BHL 500'FSL & 685'FWL, Sec.5									

Design Targets									
Target Name	Dip Angle (°)	Dip Dir. (°)	TVD (ft)	+N/-S (ft)	+E/-W (ft)	Northing (usft)	Easting (usft)	Latitude	Longitude
SHL 2437'FSL & 1068'F'	0.00	0.00	1.0	0.0	0.0	1,245,939.16	3,162,493.59	40.007030	-104.919920
- hit/miss target									
- Shape									
- survey hits target center									
- Point									
BHL 500'FSL & 685'FW	0.00	0.00	7,845.0	-7,034.4	86.9	1,238,905.76	3,162,626.46	39.987720	-104.919610
- survey misses target center by 695.1ft at 13981.0ft MD (7840.3 TVD, -6340.0 N, 118.6 E)									
- Point									

Checked By: _____	Approved By: _____	Date: _____
-------------------	--------------------	-------------