



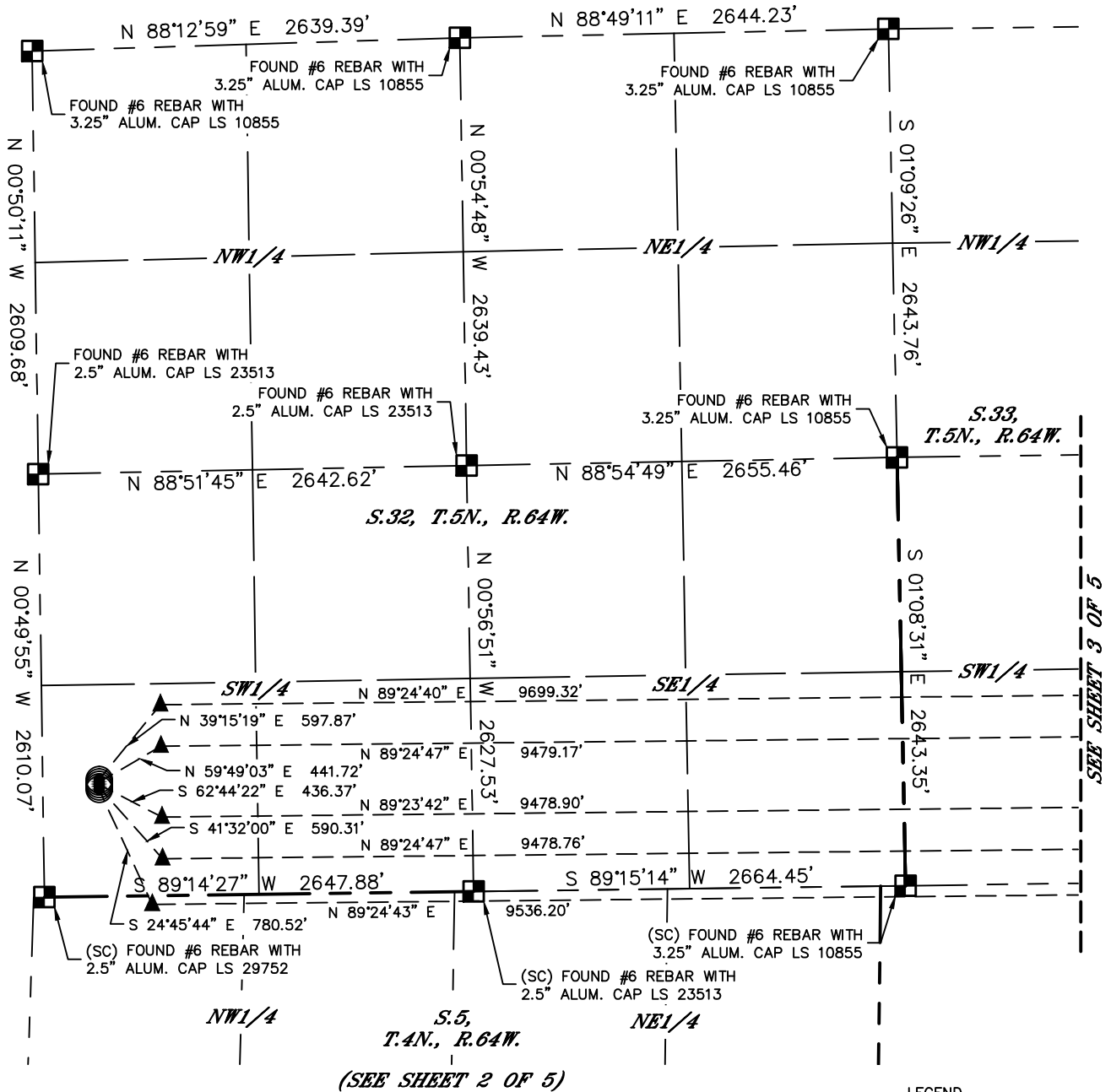
Lat40°, Inc. 6250 W. 10th Street, Unit 2, Greeley, CO 970-515-5294

MULTI-WELL PLAN

SCHMIER 5N64W32H PAD

SECTION: 32
TOWNSHIP: 5N
RANGE: 64W
6TH. P.M.
WELD COUNTY, CO

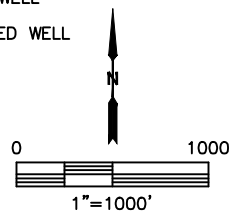
THIS MAP DOES NOT REPRESENT A BOUNDARY SURVEY



#	WELL NAME	BHL FOOTAGE				BHL LAT°	BHL LONG°	BHL S-T-R
1	SCHMIER 32H-302	1150	FSL	150	FEL	40.35171	-104.54568	33-5-64
2	SCHMIER 32H-232	894	FSL	370	FEL	40.35101	-104.54646	33-5-64
3	SCHMIER 32I-312	460	FSL	370	FEL	40.34981	-104.54646	33-5-64
4	SCHMIER 32I-212	200	FSL	370	FEL	40.34910	-104.54645	33-5-64
5	SCHMIER 32I-302	81	FNL	225	FEL	40.34833	-104.54649	4-4-64

LEGEND

- = ALIQUOT MONUMENT AS DESCRIBED
- = CALCULATED POSITION
- = SURFACE HOLE LOCATION (SHL)
- ▲ = ENTRY POINT LOCATION (EP)
- = BOTTOM HOLE LOCATION (BHL)
- ⊙ = EXISTING WELL
- ⊙ = ABANDONED WELL





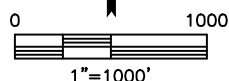
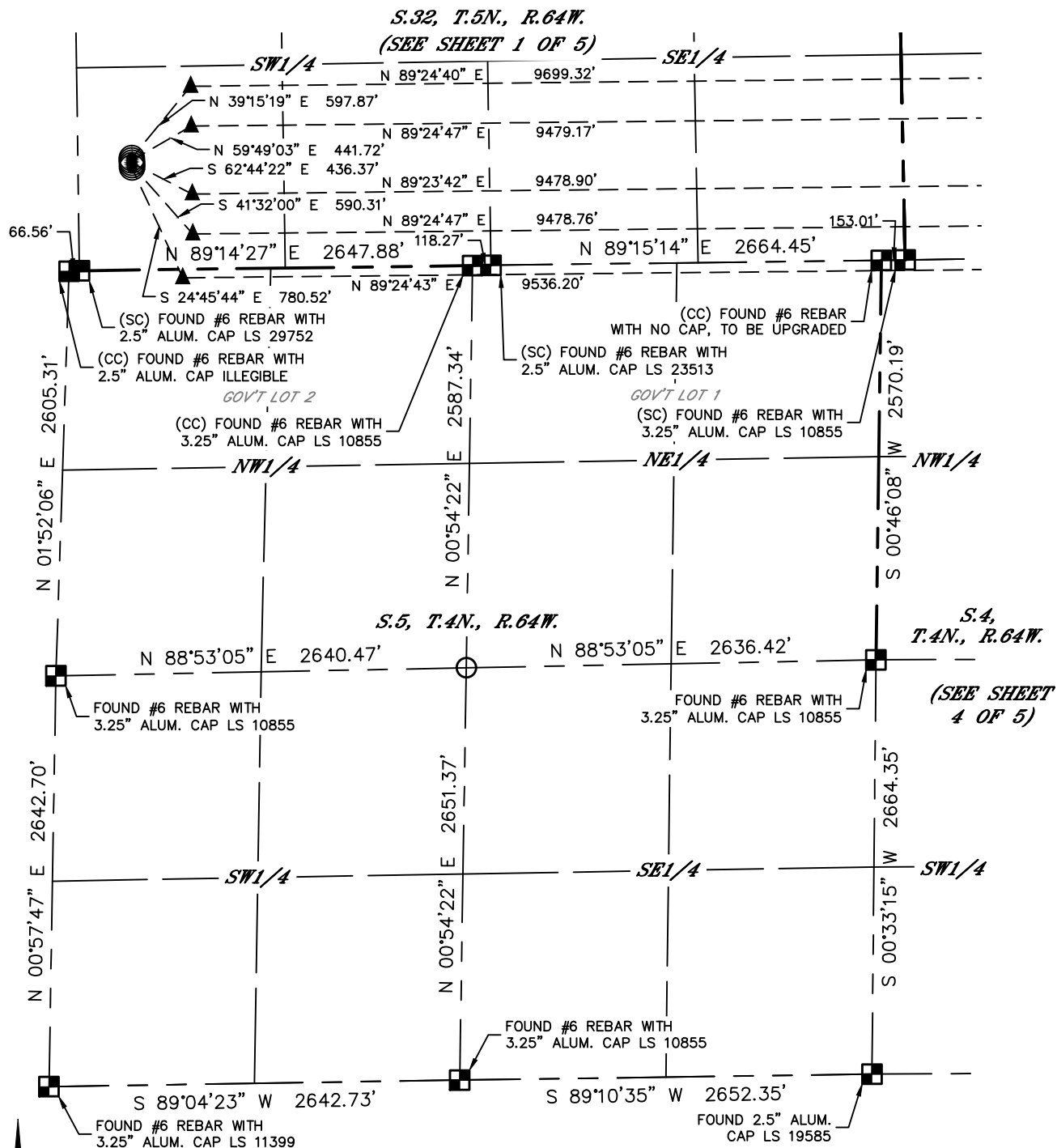
Lat40°, Inc. 6250 W. 10th Street, Unit 2, Greeley, CO 970-515-5294

MULTI-WELL PLAN

SCHMIER 5N64W32H PAD

THIS MAP DOES NOT REPRESENT A BOUNDARY SURVEY

SECTION: 32
TOWNSHIP: 5N
RANGE: 64W
6TH. P.M.
WELD COUNTY, CO



#	WELL NAME	BHL FOOTAGE			BHL LAT°	BHL LONG°	BHL S-T-R
1	SCHMIER 32H-302	1150	FSL	150	FEL	40.35171	-104.54568 33-5-64
2	SCHMIER 32H-232	894	FSL	370	FEL	40.35101	-104.54646 33-5-64
3	SCHMIER 32I-312	460	FSL	370	FEL	40.34981	-104.54646 33-5-64
4	SCHMIER 32I-212	200	FSL	370	FEL	40.34910	-104.54645 33-5-64
5	SCHMIER 32I-302	81	FNL	225	FEL	40.34833	-104.54649 4-4-64

LEGEND

- = ALIQUOT MONUMENT AS DESCRIBED
- = CALCULATED POSITION
- = SURFACE HOLE LOCATION (SHL)
- ▲ = ENTRY POINT LOCATION (EP)
- _{BH} = BOTTOM HOLE LOCATION (BHL)
- ⊙ = EXISTING WELL
- ⊙ = ABANDONED WELL

SHEET 2 OF 5

DATE: 2/21/2017
PROJECT#: 2016101



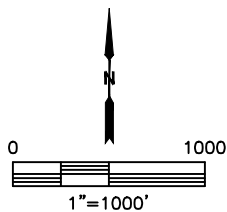
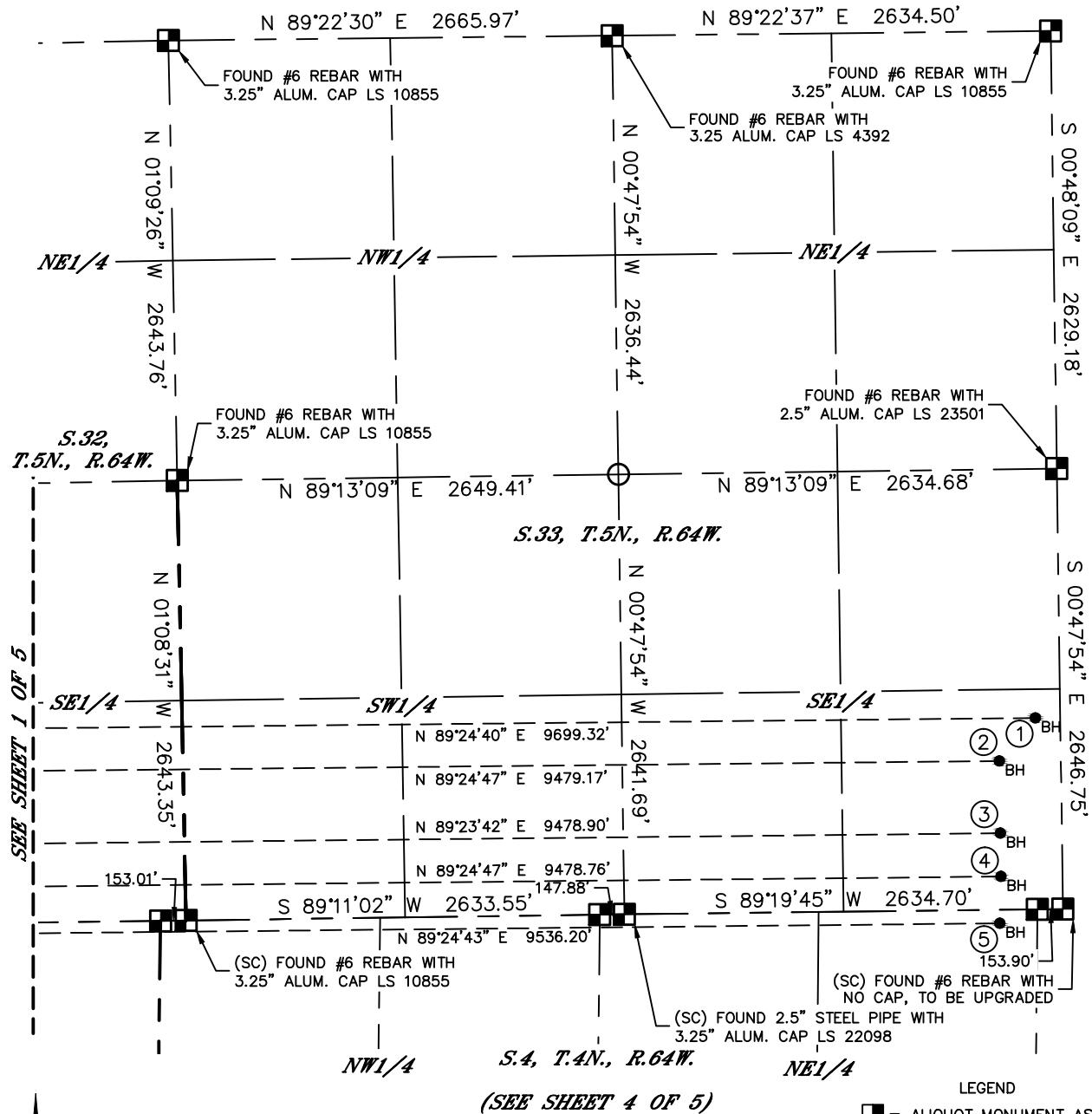
Lat40°, Inc. 6250 W. 10th Street, Unit 2, Greeley, CO 970-515-5294

MULTI-WELL PLAN

SCHMIER 5N64W32H PAD

THIS MAP DOES NOT REPRESENT A BOUNDARY SURVEY

SECTION: 32
TOWNSHIP: 5N
RANGE: 64W
6TH. P.M.
WELD COUNTY, CO



#	WELL NAME	BHL FOOTAGE				BHL LAT°	BHL LONG°	BHL S-T-R
1	SCHMIER 32H-302	1150	FSL	150	FEL	40.35171	-104.54568	33-5-64
2	SCHMIER 32H-232	894	FSL	370	FEL	40.35101	-104.54646	33-5-64
3	SCHMIER 32I-312	460	FSL	370	FEL	40.34981	-104.54646	33-5-64
4	SCHMIER 32I-212	200	FSL	370	FEL	40.34910	-104.54645	33-5-64
5	SCHMIER 32I-302	81	FNL	225	FEL	40.34833	-104.54649	4-4-64



Lat40°, Inc. 6250 W. 10th Street, Unit 2, Greeley, CO 970-515-5294

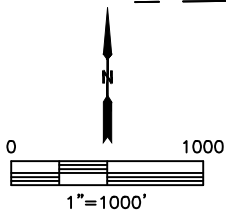
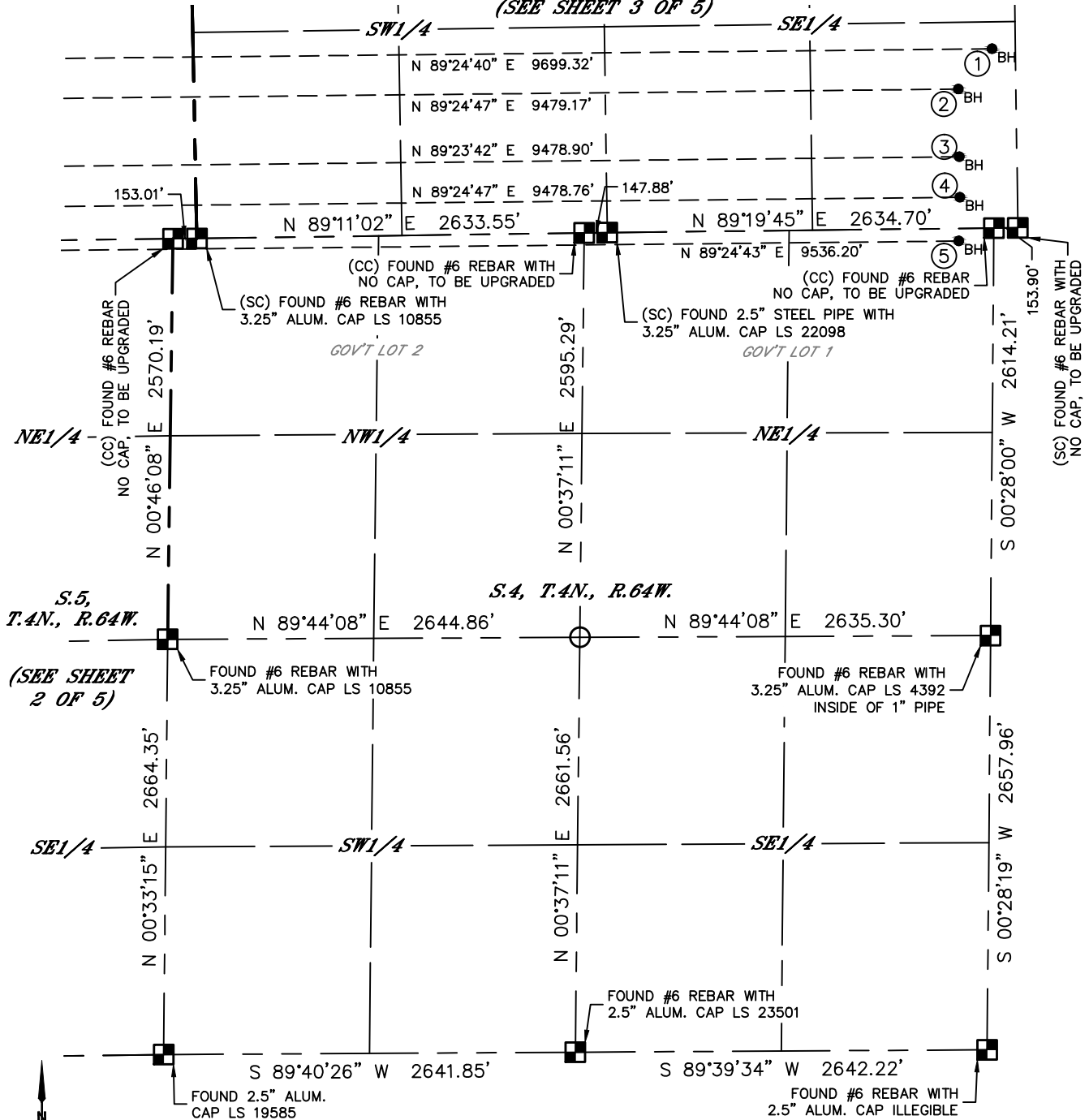
MULTI-WELL PLAN

SCHMIER 5N64W32H PAD

THIS MAP DOES NOT REPRESENT A BOUNDARY SURVEY

SECTION: 32
TOWNSHIP: 5N
RANGE: 64W
6TH. P.M.
WELD COUNTY, CO

S.33, T.5N., R.64W.
(SEE SHEET 3 OF 5)



#	WELL NAME	BHL FOOTAGE			BHL LAT°	BHL LONG°	BHL S-T-R
1	SCHMIER 32H-302	1150	FSL	150	FEL	40.35171	-104.54568 33-5-64
2	SCHMIER 32H-232	894	FSL	370	FEL	40.35101	-104.54646 33-5-64
3	SCHMIER 32I-312	460	FSL	370	FEL	40.34981	-104.54646 33-5-64
4	SCHMIER 32I-212	200	FSL	370	FEL	40.34910	-104.54645 33-5-64
5	SCHMIER 32I-302	81	FNL	225	FEL	40.34833	-104.54649 4-4-64

LEGEND

- = ALIQUOT MONUMENT AS DESCRIBED
- = CALCULATED POSITION
- = SURFACE HOLE LOCATION (SHL)
- ▲ = ENTRY POINT LOCATION (EP)
- _{BH} = BOTTOM HOLE LOCATION (BHL)
- ⊙ = EXISTING WELL
- ⊙ = ABANDONED WELL

SHEET 4 OF 5

DATE: 2/21/2017
PROJECT#: 2016101



Lat40°, Inc. 6250 W. 10th Street, Unit 2, Greeley, CO 970-515-5294

MULTI-WELL PLAN

SCHMIER 5N64W32H PAD

SECTION: 32
TOWNSHIP: 5N
RANGE: 64W
6TH. P.M.
WELD COUNTY, CO

