

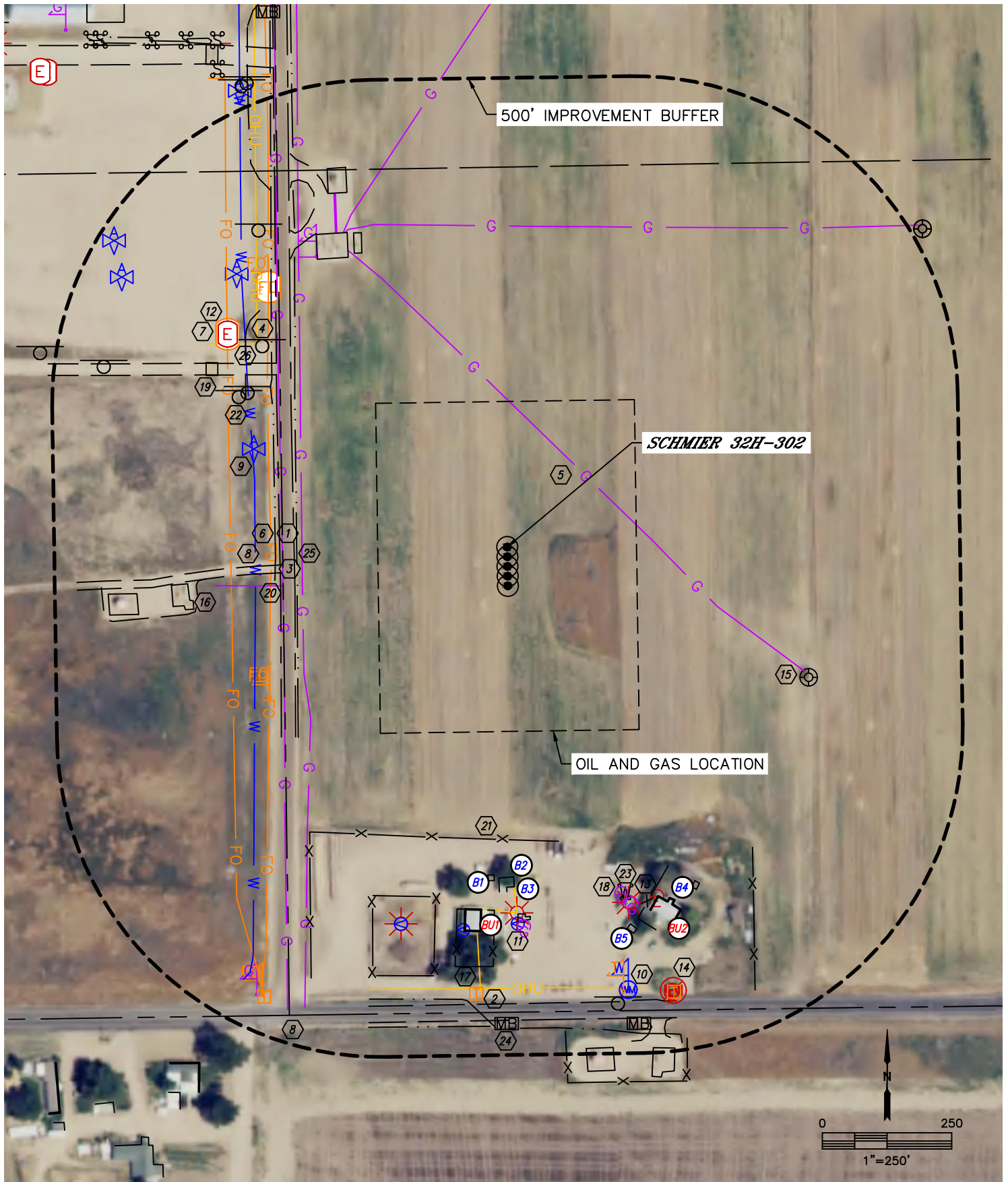


Lat40°, Inc. 6250 W. 10th Street, Unit 2, Greeley, CO 970-515-5294

# LOCATION DRAWING

SCHMIER 5N64W32H PAD

SECTION: 32  
TOWNSHIP: 5N  
RANGE: 64W  
6TH. P.M.  
WELD COUNTY, CO





Lat40°, Inc. 6250 W. 10th Street, Unit 2, Greeley, CO 970-515-5294

# LOCATION DRAWING

## SCHMIER 5N64W32H PAD

SECTION: 32  
TOWNSHIP: 5N  
RANGE: 64W  
6TH. P.M.  
WELD COUNTY, CO

### IMPROVEMENTS:

(MEASURED FROM THE PROPOSED SCHMIER 32H-302 WELL LOCATION)

- BU1 BUILDING UNIT BU1 562' S, BU2 588' SE
- B1 BUILDING B1 507' S, B2 510' S, B3 567' S, B4 592' SE, B5 613' SE
- 1 COUNTY ROAD 51 328' W
- 2 COUNTY ROAD 50 706' S
- 3 ROAD/EDGE OF GRAVEL 353' & 484' W, 445' & 557' NW, 762' SE
- 4 OVERHEAD UTILITY LINE 501' NW, 526', 596' & 682' S
- 5 GAS LINE LOCATES (NOBLE) ±164' NE, ±496' N, ±549' & 552' NW, (DCP) 317' & 348' W, 351' SW, 536' NW
- 6 FIBER OPTIC LOCATES ±365' & ±427' W
- 7 FIBER OPTIC VAULT 543' & 546' NW
- 8 WATER LINE LOCATES ±389' W
- 9 AIR VALVE 420', 594', 727' & 770' NW
- 10 WATER METER 711' SE
- 11 SPIGOT 582' S, 596' & 605' SW
- 12 ELECTRIC VAULT 543' NW
- 13 ELECTRIC SERVICE 587' & 732' SE
- 14 ELECTRIC METER 732' SE
- 15 EXISTING WELL HEAD 507' SE
- 16 EXISTING PRODUCTION EQUIPMENT (NOBLE) 492' & 577' SW, 507', 511' & 602' NW, 785' & 806' SE
- 17 TELEPHONE PEDESTAL 692' S, 734' E, 790' SW
- 18 GAS SERVICE 563' & 583' SE, 587' S
- 19 CATTLE GUARD 520' NW
- 20 PIPE 359' W, 465' NW, 704' S, 780' SE
- 21 FENCE 452', 562' & 753' S, 552' SW, 552' & 599' SE
- 22 SIGN 472', 480', 496', 630' & 687' NW, 716' SE
- 23 POST 564' SE
- 24 MAILBOX 736' S, 764' SE
- 25 BORROW DITCH 325' & 358' W
- 26 DITCH 520' & 661' NW, 702' SW, 744' S, 792' SE