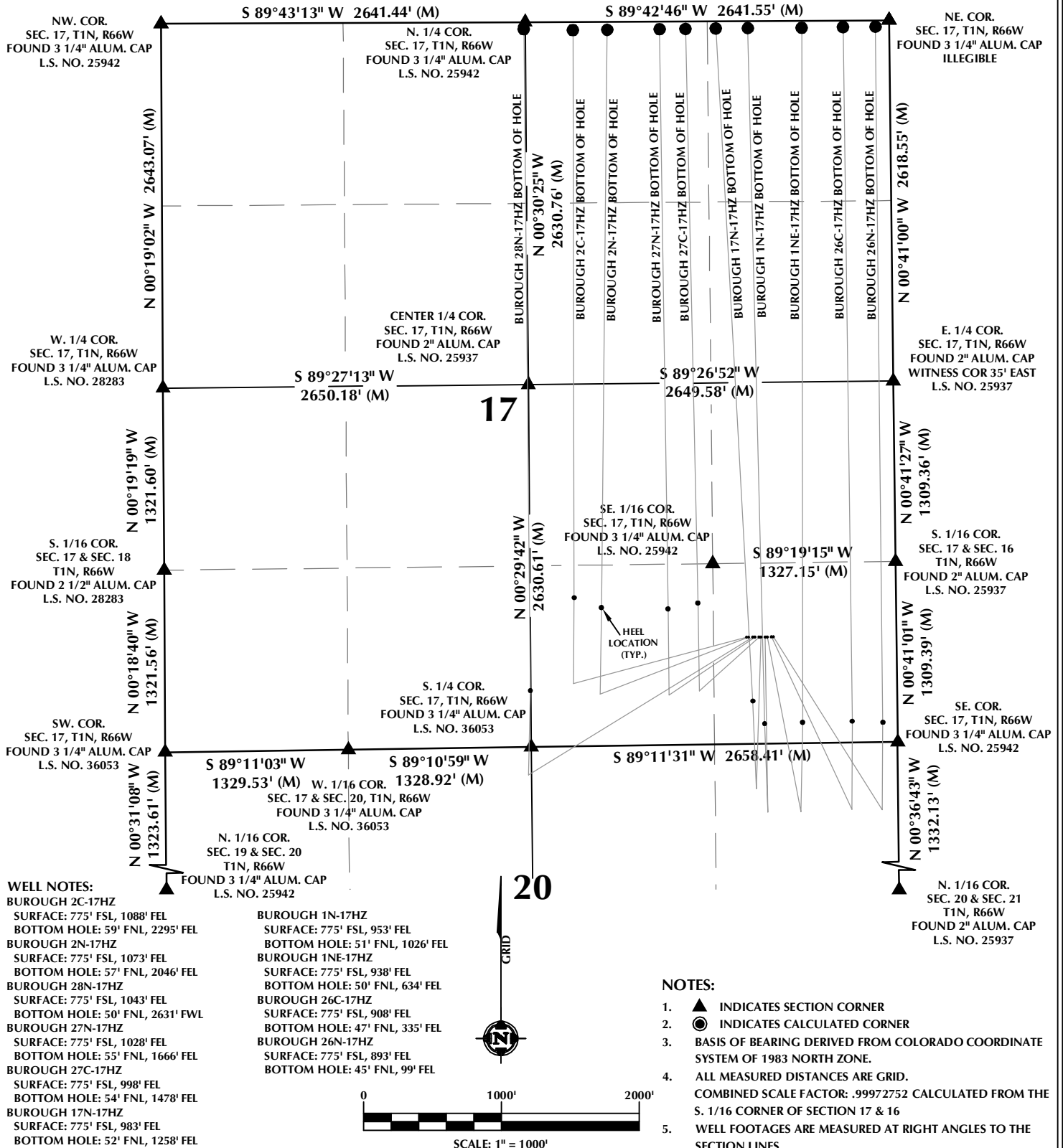


MULTI-WELL PLAN SECTIONS 17 & 20, T1N, R66W



WELL PAD - BURROUGH 27C-17HZ

MULTI-WELL PLAN
BURROUGH 2C-17HZ, BURROUGH 2N-17HZ,
BURROUGH 28N-17HZ, BURROUGH 27N-17HZ,
BURROUGH 27C-17HZ, BURROUGH 17N-17HZ,
BURROUGH 1N-17HZ, BURROUGH 1NE-17HZ,
BURROUGH 26C-17HZ & BURROUGH 26N-17HZ
LOCATED IN SECTION 17, T1N, R66W, 6TH P.M.
WELD COUNTY, COLORADO

**Kerr-McGee Oil &
Gas Onshore L.P.**
1099 18th Street
Denver, Colorado 80202



CONSULTING, LLC

SHERIDAN OFFICE
1095 Saberton Avenue
Sheridan, Wyoming 82801
Phone 307-674-0609

LOVELAND OFFICE
1635 Foxtrail Drive, Suite 204
Loveland, Colorado 80538
Phone 970-776-4331

DRAFTED BY:	LMO	CHECKED BY:	JRS
DATE DRAFTED:	9/25/15	DATE SURVEYED:	3/31/16
REVISED:	12/15/16	FILE NAME:	15-58

MULTI-WELL PLAN SECTION 17, T1N, R66W

NUMBER	WELL NAME	API NUMBER	LATITUDE (NAD 83)	LONGITUDE (NAD 83)	SURFACE ELEVATION	TOTAL DEPTH
1	ADAMS WW 17-1	05-123-23812	40.056258	-104.794401	4970.2	7639
2	SAM M OKAMOTO GAS UNIT 1	05-123-08126	40.053961	-104.797379	4955.5	8080
3	*ADAMS WW 17-8X	05-123-25192	40.052830	-104.793900	4977.0	7643
4	JOHN DITIRRO JR GAS UNIT 1	05-123-08319	40.045865	-104.806966	4942.2	8095

NOTES:

- * INDICATES EXISTING WELLS THAT WERE NOT SURVEYED
BUT DERIVED FROM COLORADO OIL AND GAS
CONSERVATION COMMISSION (COGCC).

EXISTING WELL EXHIBIT
SECTION 17, T1N, R66W, 6TH P.M.
WELD COUNTY, COLORADO

**Kerr-McGee Oil &
Gas Onshore L.P.**
1099 18th Street
Denver, Colorado 80202



CONSULTING, LLC

SHERIDAN OFFICE
1095 Saberton Avenue
Sheridan, Wyoming 82801
Phone 307-674-0609

LOVELAND OFFICE
1635 Foxtrail Drive, Suite 204
Loveland, Colorado 80538
Phone 970-776-4331

DRAFTED BY:	LMO	CHECKED BY:	REM	SHEET NO:
DATE DRAFTED:	9/25/15	DATE SURVEYED:	6/4/15	2
REVISED:		FILE NAME:	15-58	2 OF 2