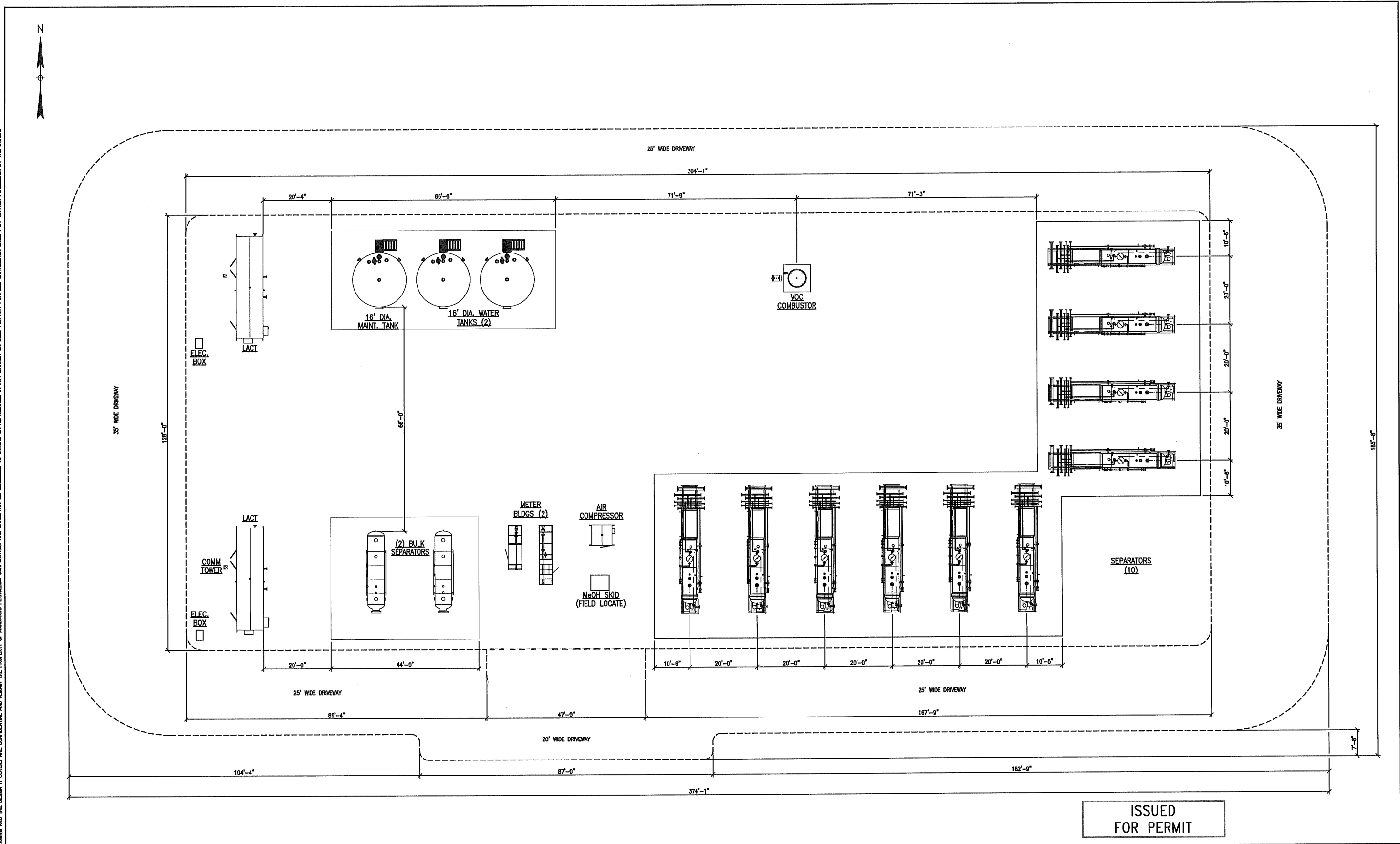


<p>NOTES:</p> <p>1. EQUIPMENT PLACEMENT IS APPROXIMATE AND SUBJECT TO MINOR MODIFICATION DUE TO SPECIFIC CIRCUMSTANCES.</p>	<p>DATA SOURCES:</p> <p>- AERIAL COURTESY OF ESRI, INC.</p>	<p> LOVELAND OFFICE 1635 Foxtrail Drive, Suite 204 Loveland, Colorado 80538 Phone 805-388-6099 SHERIDAN OFFICE 1095 Saberton Avenue Sheridan, Wyoming 82801 Phone 307-674-0609 CONSULTING, LLC</p>	<p> 1099 18th Street Denver, CO 80202</p>	<p>SCALE: 1" = 200' DATE SURVEYED: 3/31/16 DATE: 9/25/15 DRAFTER: SRS REVISED: 01/25/17</p>	<p>FACILITY LAYOUT AERIAL BURGESS 27C-17HZ FACILITY LOCATED IN SECTION 17, T1N, R66W, 6TH P.M. WELD COUNTY, COLORADO</p>
---	---	---	--	---	--



THIS DRAWING AND THE DESIGN IT COVERS ARE CONFIDENTIAL AND REMAIN THE PROPERTY OF ANADARKO PETROLEUM CORPORATION AND SHALL NOT BE DISCLOSED TO OTHERS OR REPRODUCED IN ANY MANNER OR USED FOR ANY PURPOSE WHATSOEVER EXCEPT BY WRITTEN PERMISSION BY THE OWNER.



ISSUED  
FOR PERMIT

NOTES:		REFERENCE DRAWINGS		REVISIONS						<div>Anadarko</div> <div>Petroleum Corporation</div> <div>BUROUGH</div>	<div>PERMIT PLOT PLAN</div> <div>PRODUCTION EQUIPMENT</div> <div>W/ EQUIPMENT LOCATIONS</div> <div>DRAWN BY: JBM</div> <div>APPROVED: JTK</div> <div>SCALE: 1"=12'-0"</div> <div>CREATION DATE: 8/21/15</div> <div>APPR. DATE: 8/21/15</div> <div>DWG. No.:</div> <div>X20317-STOR-01-PP-2020</div> <div>SHEET No. 1 OF 1</div>
DWG. NO.	TITLE	NO.	DESCRIPTION	BY	DATE	CHK.	DATE	APPR.	DATE		
		2	ADDED VRUs - ISSUED FOR PERMIT	BC	8/22/15	NR	8/23/15	NR	8/23/15		
		1	RE-ISSUED FOR PERMIT	AK	8/18/15			NR	8/18/15		
		0	ISSUED FOR PERMIT	JBM	8/21/15			NR	8/21/15		