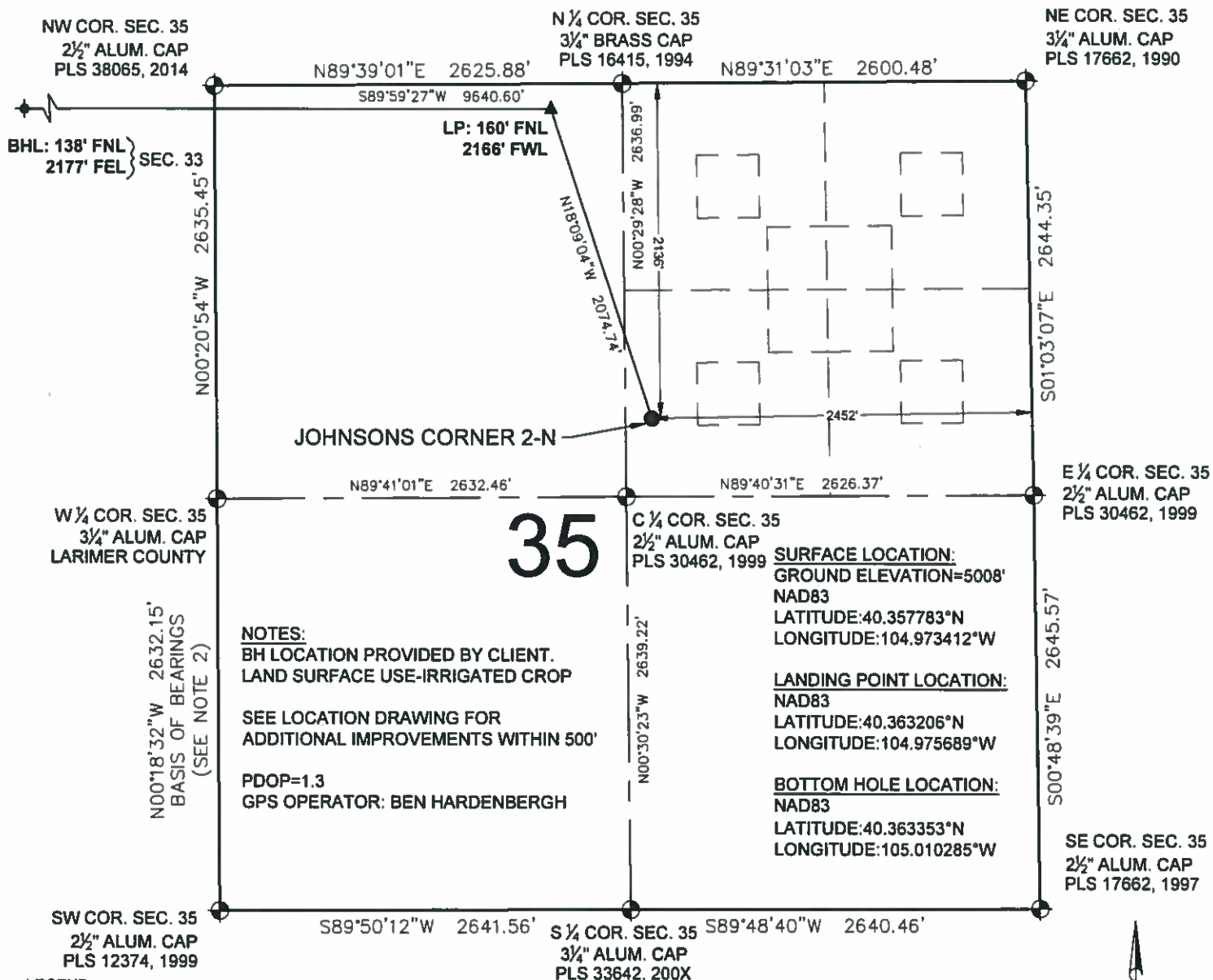


# JOHNSONS CORNER 2-N WELL LOCATION CERTIFICATE



**WELL JOHNSONS CORNER 2-N TO BE  
LOCATED 2136' FNL & 2452' FEL**

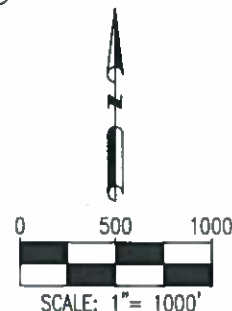
## NOTES:

- THIS FIELD SURVEY CONFORMS TO THE MINIMUM STANDARDS SET BY THE C.O.G.C.C., RULE NO. 215
- BEARINGS AND DISTANCE SHOWN HEREON ARE GRID AND BASED ON THE COLORADO STATE PLANE COORDINATE SYSTEM, NAD 83/2011 BETWEEN MONUMENTS AS LABELED HEREON AND ELEVATIONS SHOWN ARE NAVD 88, AS DERIVED BY GPS OBSERVATIONS.
- GRID DISTANCES ARE SHOWN, AS MEASURED IN THE FIELD, WITH TIES TO WELLS MEASURED PERPENDICULAR TO SECTION LINES.

NOTICE: ACCORDING TO COLORADO LAW YOU MUST COMMENCE ANY LEGAL ACTION BASED UPON ANY DEFECT IN THIS SURVEY WITHIN THREE YEARS AFTER YOU FIRST DISCOVER SUCH DEFECT. IN NO EVENT MAY ANY ACTION BASED UPON ANY DEFECT IN THIS SURVEY BE COMMENCED MORE THAN TEN YEARS FROM THIS SAID DATE OF THIS CERTIFICATION SHOWN HEREON.

I, MICHAEL L. POOL, A LICENSED PROFESSIONAL LAND SURVEYOR IN THE STATE OF COLORADO DO HEREBY CERTIFY TO **EXTRACTION OIL & GAS** THAT THE SURVEY AND WELL LOCATION CERTIFICATE SHOWN HEREON WERE DONE BY ME OR UNDER MY DIRECT SUPERVISION AND THAT THE DRAWING SHOWN HEREON ACCURATELY DEPICTS THE PROPOSED LOCATION OF THE WELL. THIS CERTIFICATE DOES NOT REPRESENT A LAND SURVEY PLAT OR IMPROVEMENT SURVEY PLAT AS DEFINED BY C.R.S. 38-51-102 AND CANNOT BE RELIED UPON TO DETERMINE OWNERSHIP.

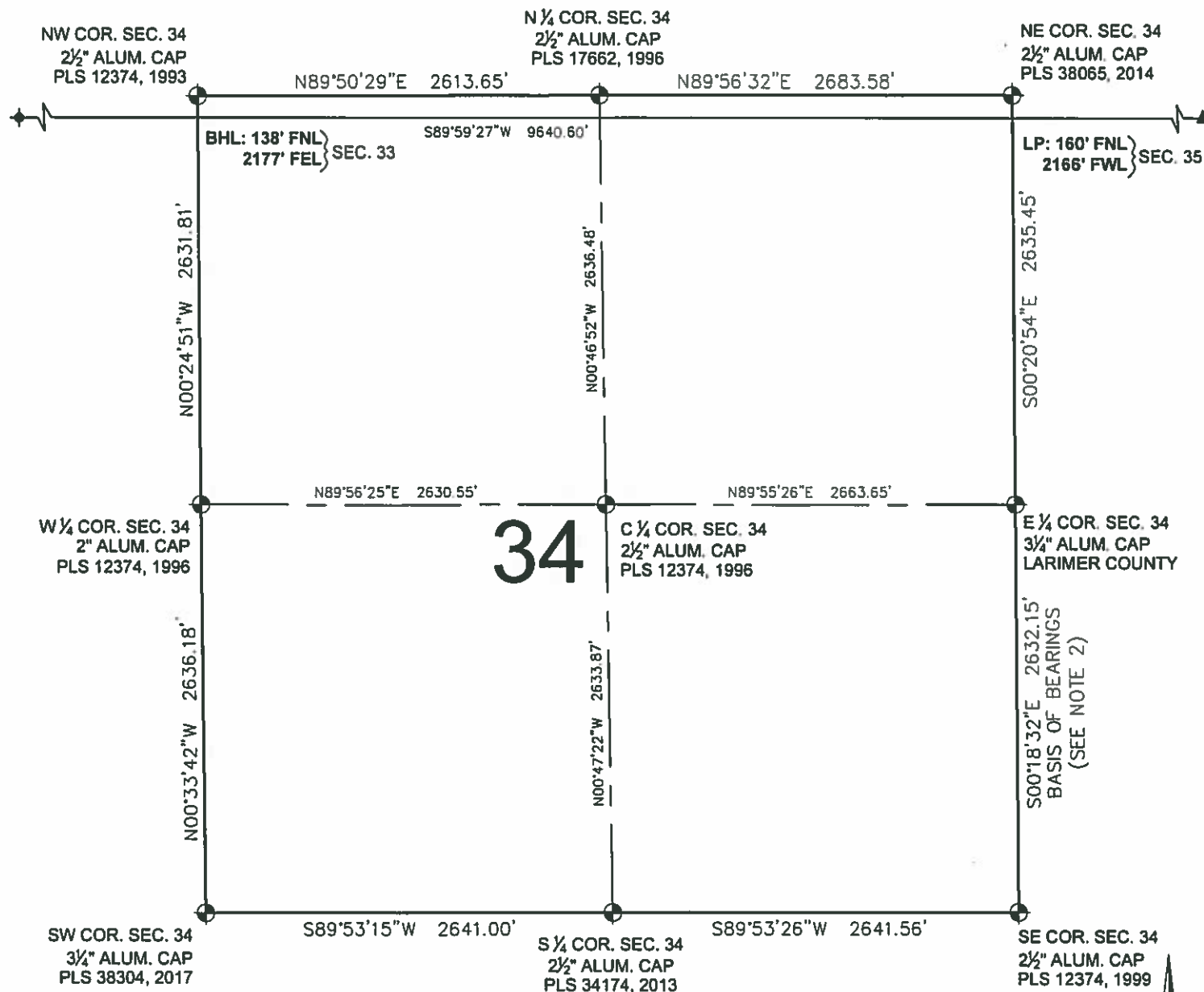
MICHAEL L. POOL, PLS 38304  
COLORADO LICENSED PROFESSIONAL LAND SURVEYOR  
FOR AND ON BEHALF OF P.F.S., LLC



SHEET 1 OF 3

<b>PREPARED BY:</b>  Petroleum Field Services, LLC 7535 Hilltop Circle Denver, CO 80221	<b>FIELD DATE:</b> 07-28-14 <b>DRAWING DATE:</b> 02-28-17 <b>BY:</b> IJM <b>CHECKED BY:</b> JLG	<b>WELL NAME:</b> JOHNSONS CORNER 2-N <b>SURFACE LOCATION:</b> SW 1/4 NE 1/4 SEC. 35, T5N, R68W, 6TH P.M. LARIMER COUNTY, COLORADO	<b>PREPARED FOR:</b>  <b>EXTRACTION</b> Oil & Gas
---	--	--	--

# JOHNSONS CORNER 2-N WELL LOCATION CERTIFICATE





## LEGEND

- ⊕ = EXISTING MONUMENT
- = CALCULATED POSITION
- = PROPOSED WELL
- ◆ = EXISTING WELL
- ⊕ = BOTTOM HOLE
- ▲ = LANDING POINT
- LP = LANDING POINT
- BHL = BOTTOM HOLE LOCATION

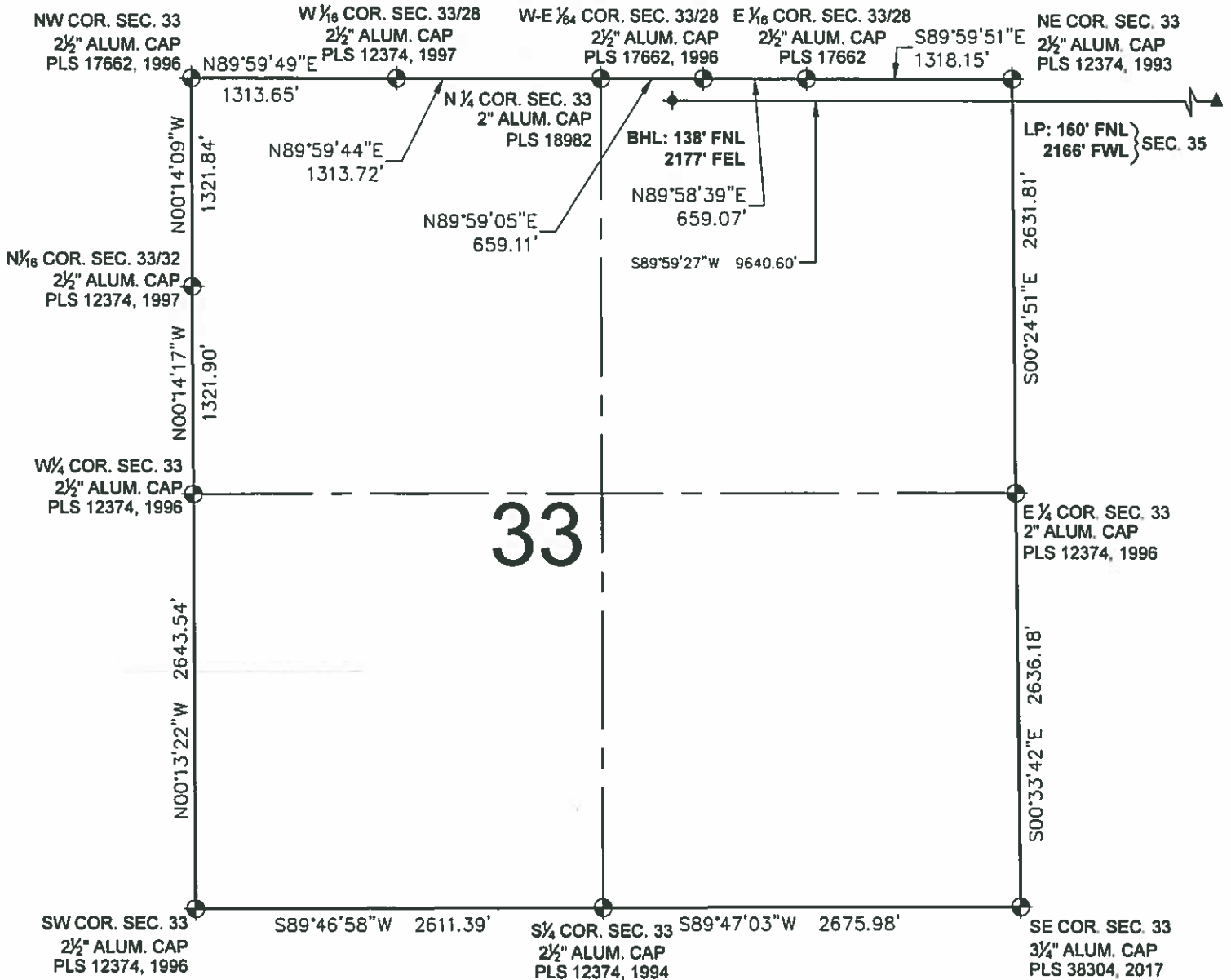
MICHAEL L. POOL, PLS 38304  
COLORADO LICENSED PROFESSIONAL LAND SURVEYOR  
FOR AND ON BEHALF OF P.F.S., LLC



SHEET 2 OF 3

PREPARED BY: 	FIELD DATE: 07-28-14	WELL NAME: JOHNSONS CORNER 2-N	PREPARED FOR: 
	DRAWING DATE: 02-28-17	SURFACE LOCATION: SW 1/4 NE 1/4 SEC. 35, T5N, R68W, 6TH P.M. LARIMER COUNTY, COLORADO	
BY: IJM	CHECKED BY: JLG		

# JOHNSONS CORNER 2-N WELL LOCATION CERTIFICATE



0 500 1000  
SCALE: 1" = 1000'



## LEGEND

- ⊕ = EXISTING MONUMENT
- = CALCULATED POSITION
- = PROPOSED WELL
- ◆ = EXISTING WELL
- ⬮ = BOTTOM HOLE
- ▲ = LANDING POINT
- LP = LANDING POINT
- BHL = BOTTOM HOLE LOCATION

MICHAEL L. POOL, PLS 38304  
COLORADO LICENSED PROFESSIONAL LAND SURVEYOR  
FOR AND ON BEHALF OF P.F.S., LLC



SHEET 3 OF 3

PREPARED BY:  Petroleum Field Services, LLC 7535 Hilltop Circle Denver, CO 80221	FIELD DATE: 07-28-14	WELL NAME: JOHNSONS CORNER 2-N	PREPARED FOR:  EXTRACTION Oil & Gas
	DRAWING DATE: 02-28-17	SURFACE LOCATION: SW 1/4 NE 1/4 SEC. 35, T5N, R68W, 6TH P.M. LARIMER COUNTY, COLORADO	
BY: IJM	CHECKED BY: JLG		