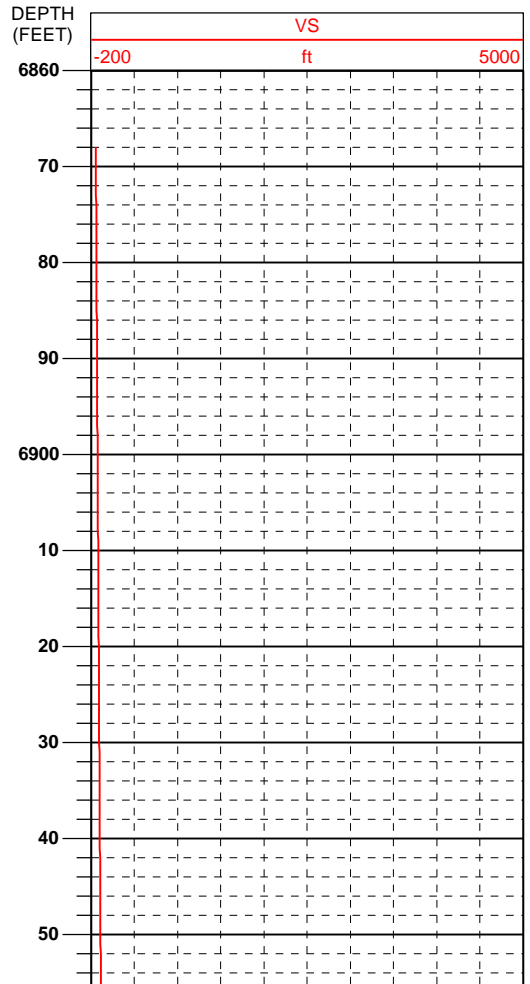
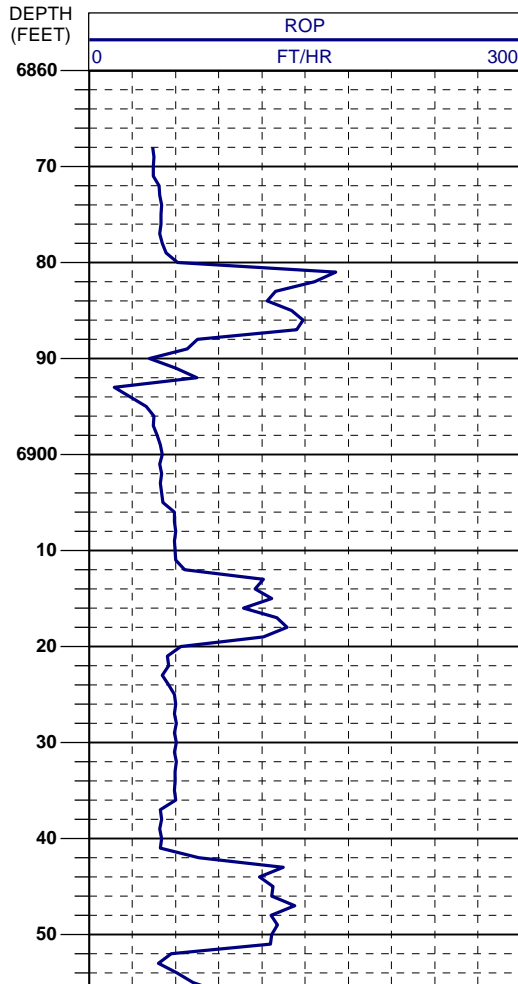
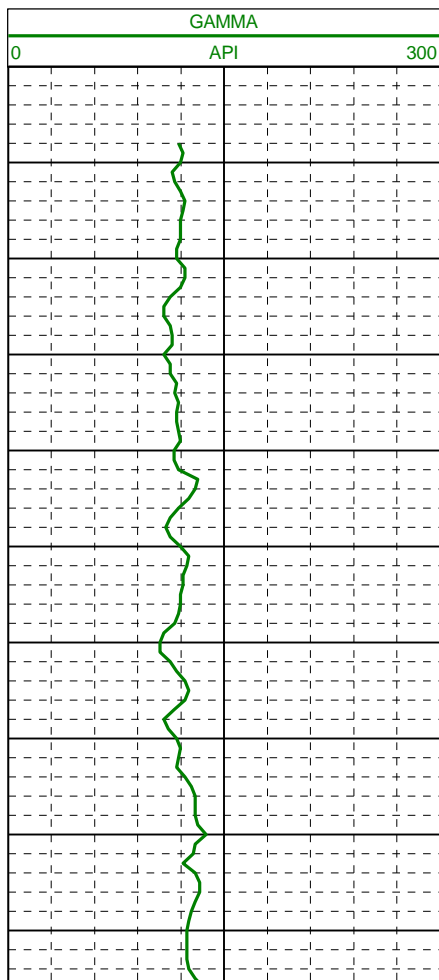
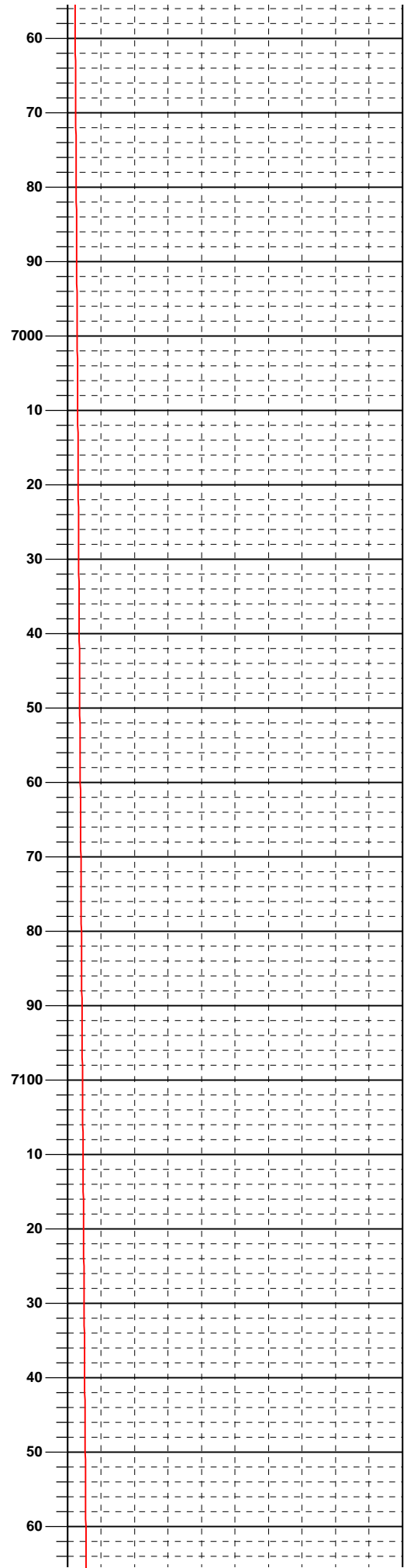
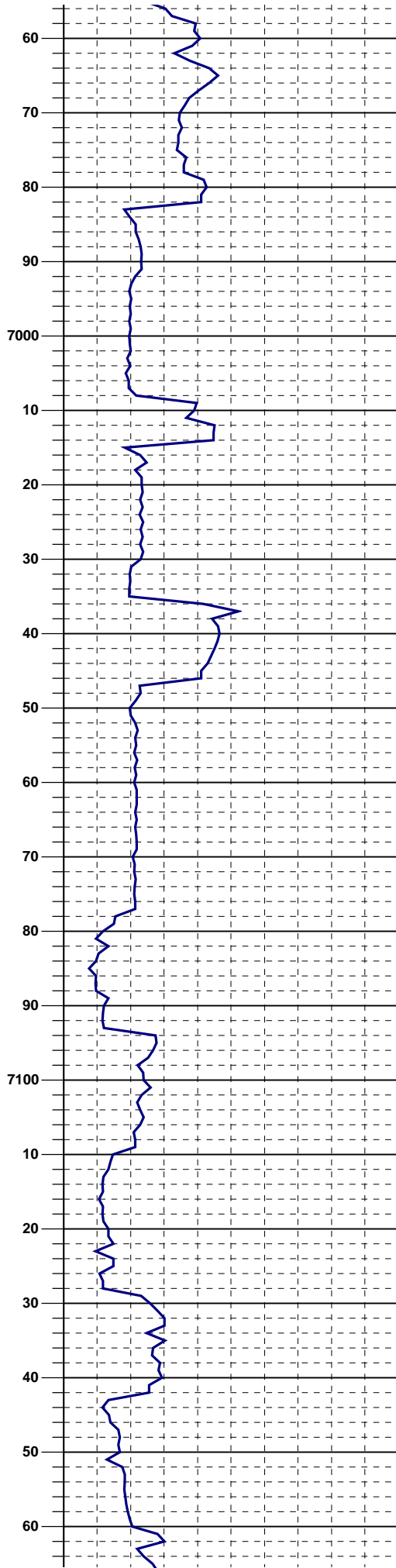
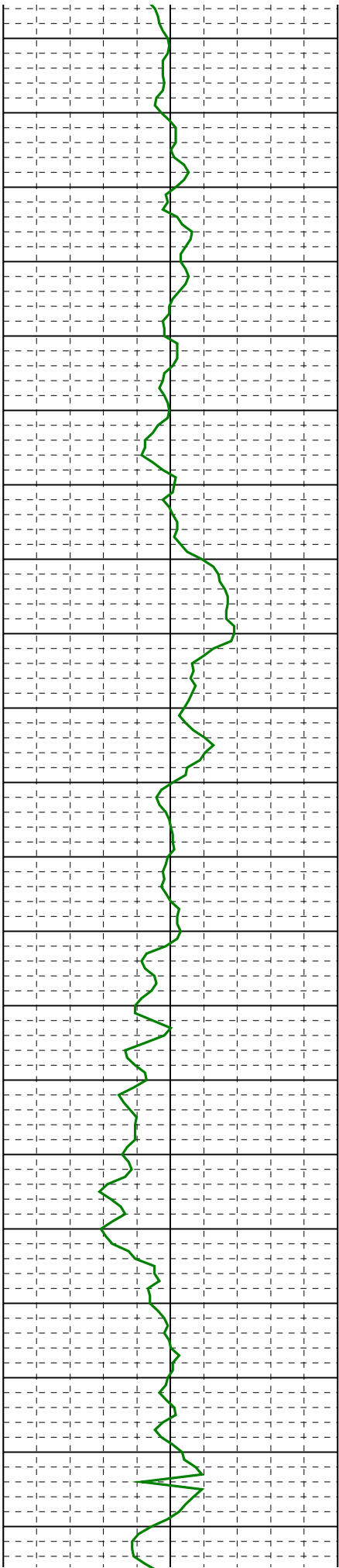
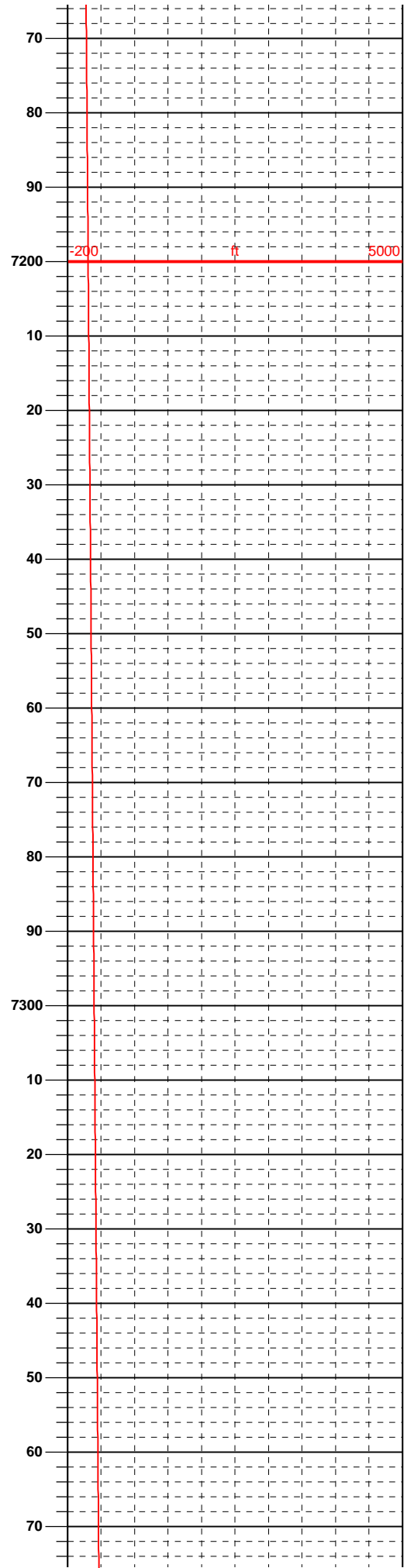
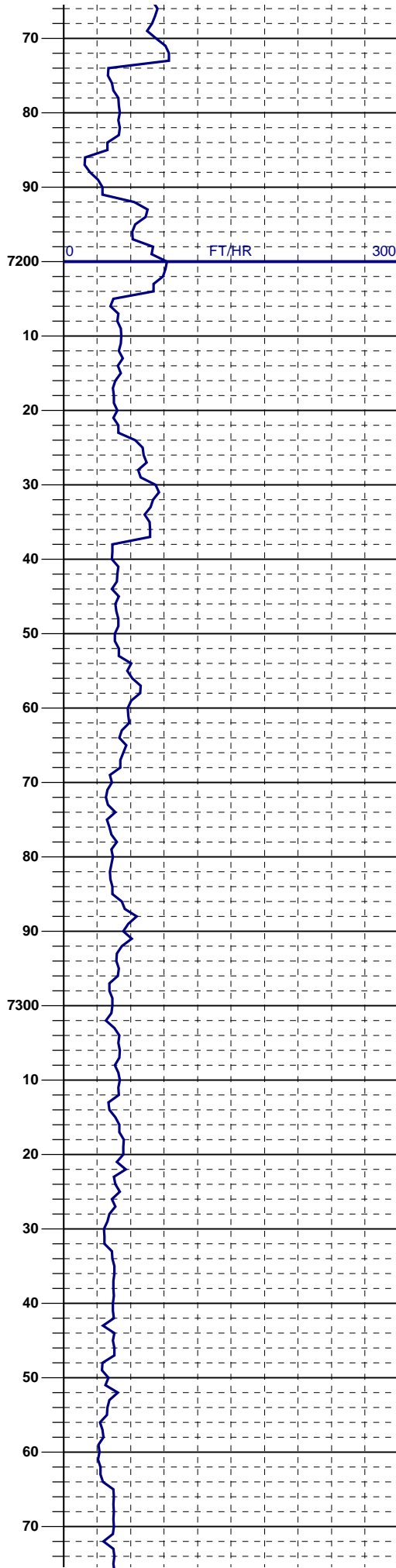
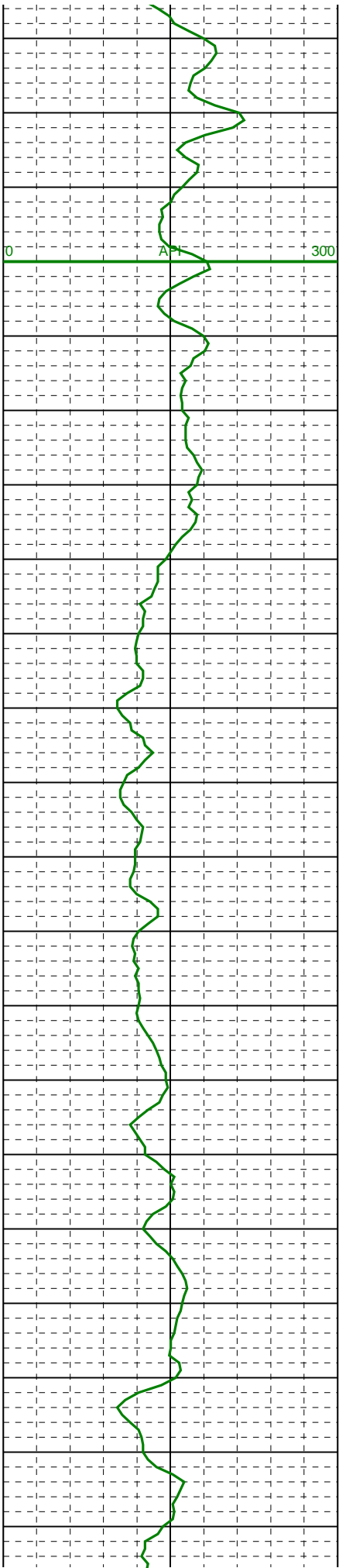


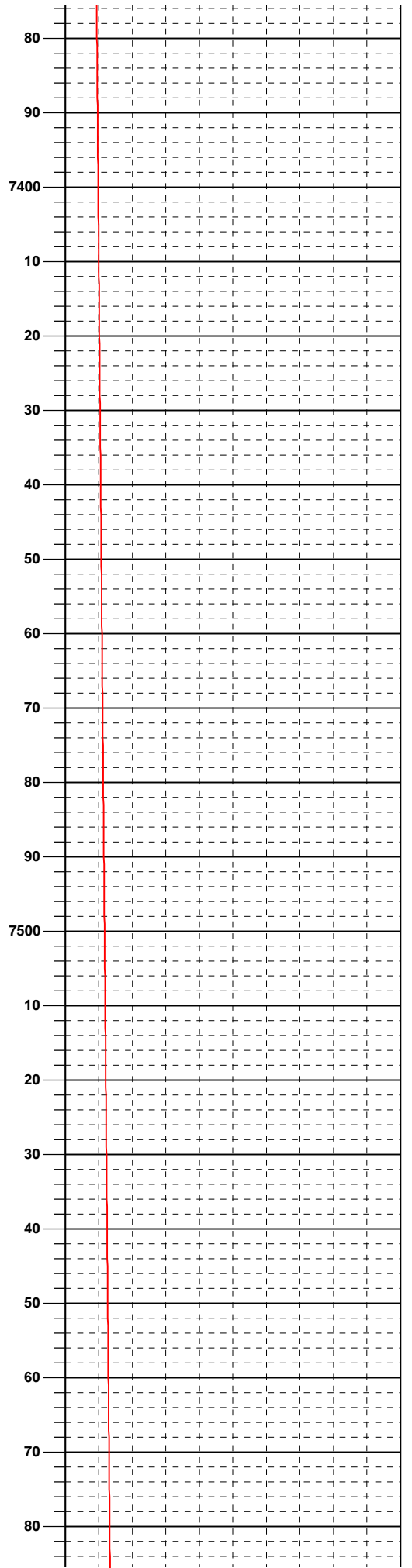
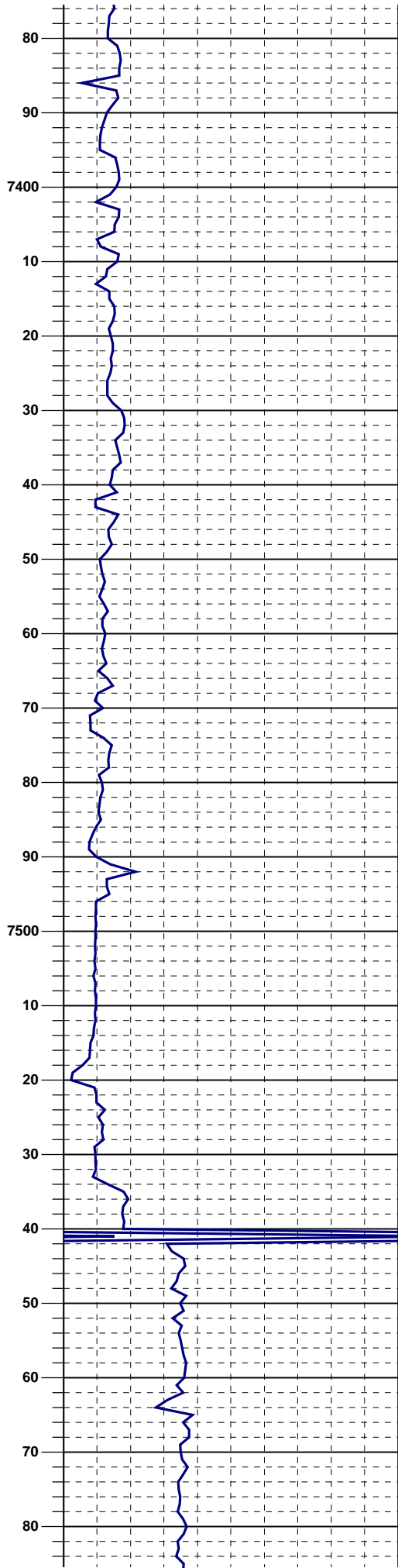
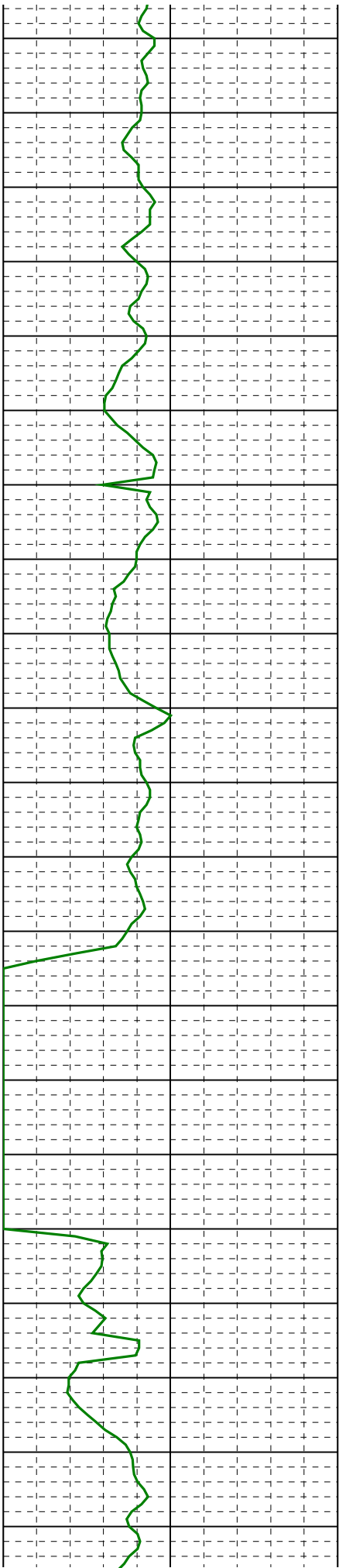
LOG created using LPLOT VH Version 3.0, April 26, 2013, Copyright (C) 1999-2009 Pason Systems Corp.

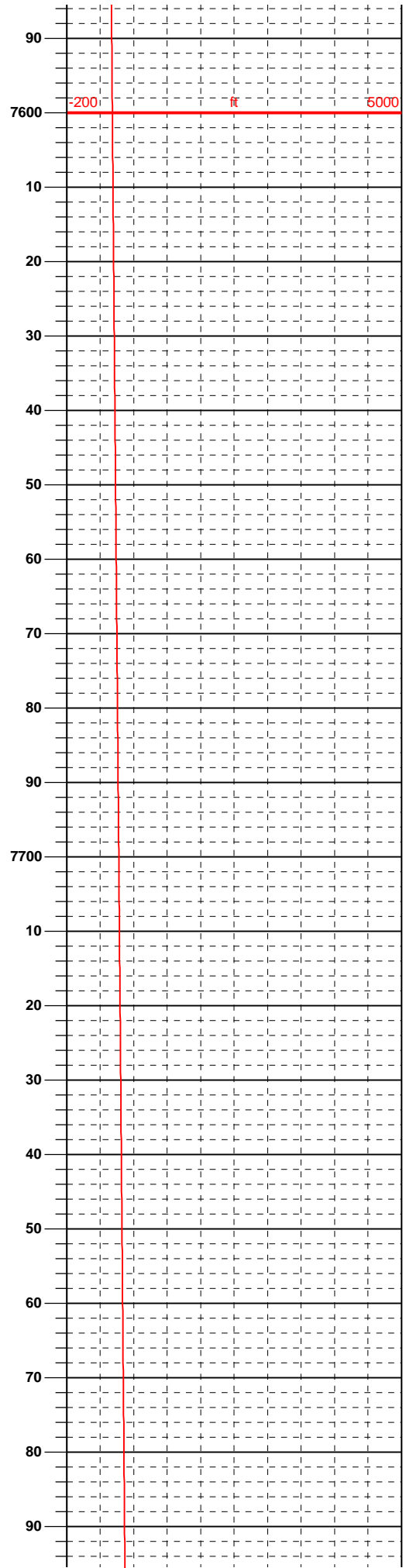
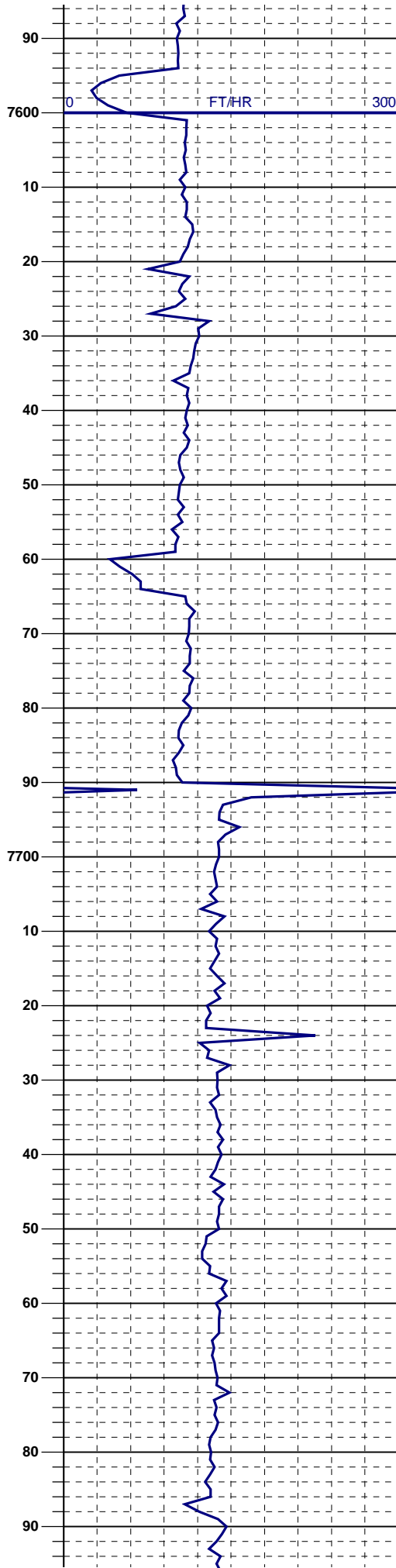
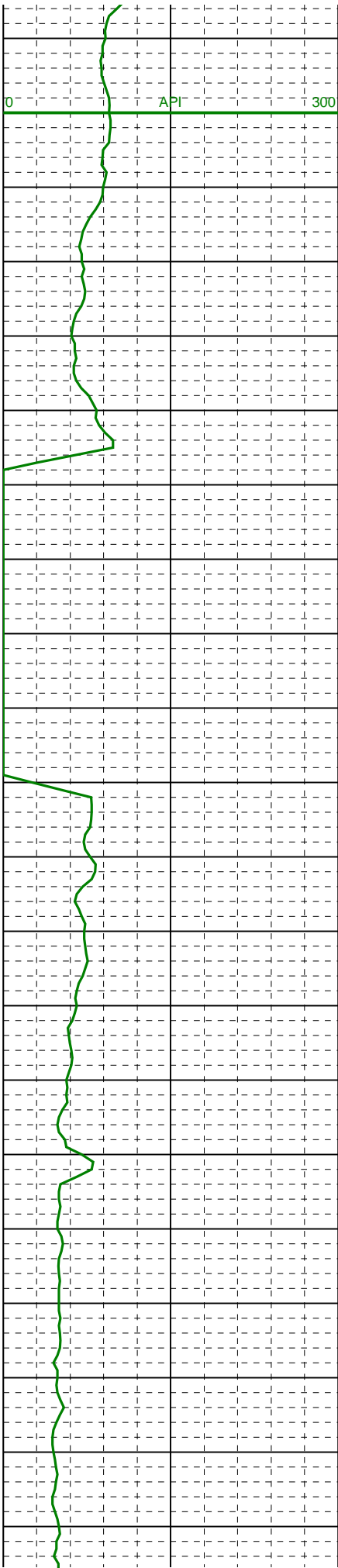
OPERATOR: PETROLEUM DEVELOPMENT CORPORATION
WELL: LEFFLER 1i-204
LOCATION: SWSW SEC. 1, T6N, R66W, 6TH
COUNTY: WELD
STATE: COLORADO
SPOT: (SHL) 234' FSL x 355' FWL
ELEVATION: GL: 4,815'; KB: 4,830'
FIELD: WATTENBERG
SYSTEM: PASON
WELL TYPE: HORIZONTAL
DATES LOGGED: APRIL 21, 2013 TO APRIL 26, 2013
DEPTHS LOGGED: 6,868' TO 11,525'
LOGGERS: PASON COMMAND CENTER
DRILLING FLUID:
DRILLING RIG: ENSIGN 32
API: 05-123-36439-0000
LOG TYPE: MD
SCALE: 1:240 (5 inches per 100 feet)
REMARKS:

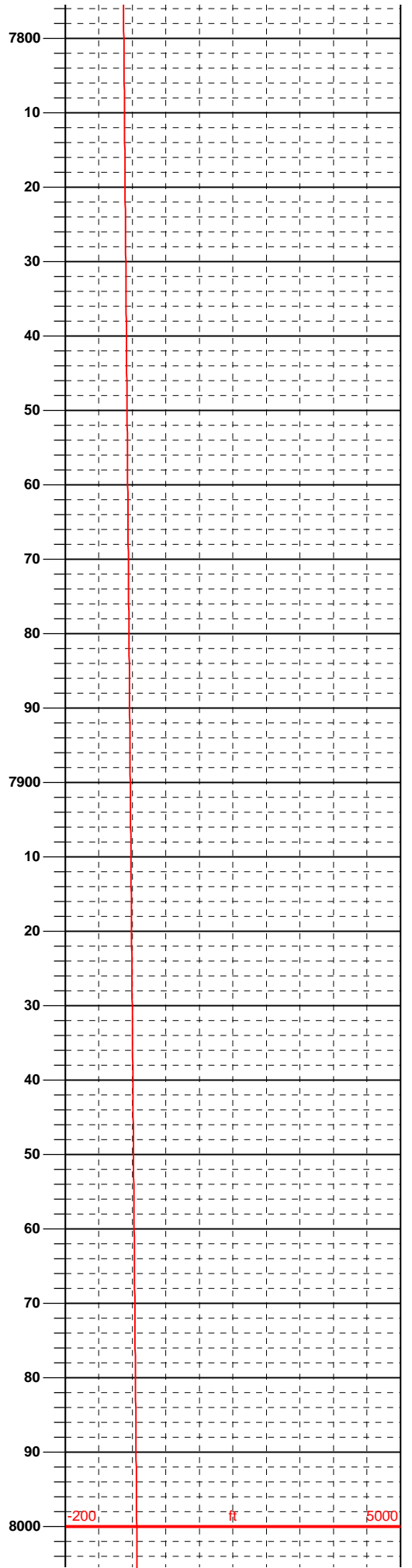
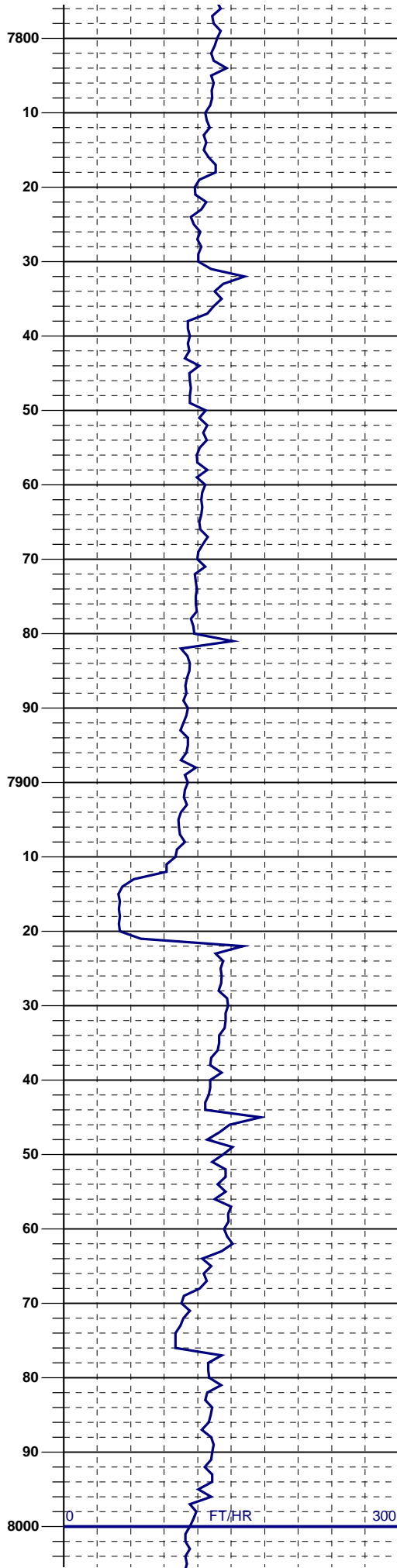
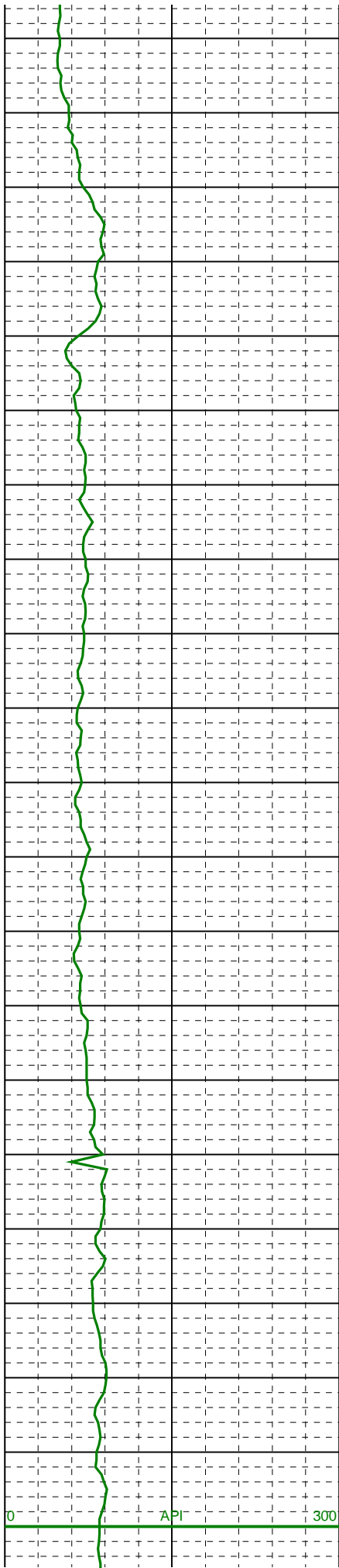


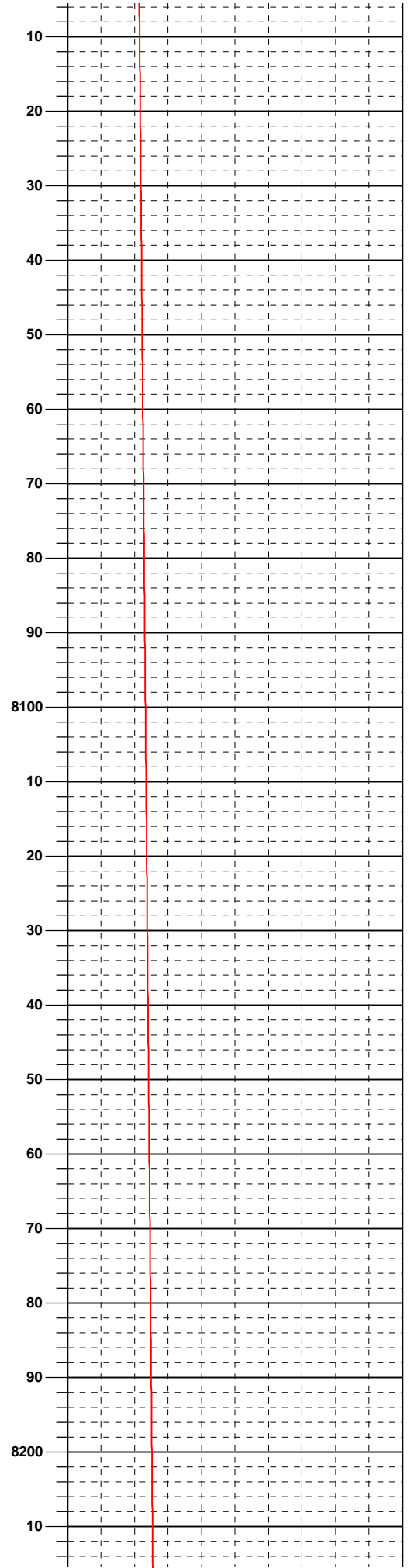
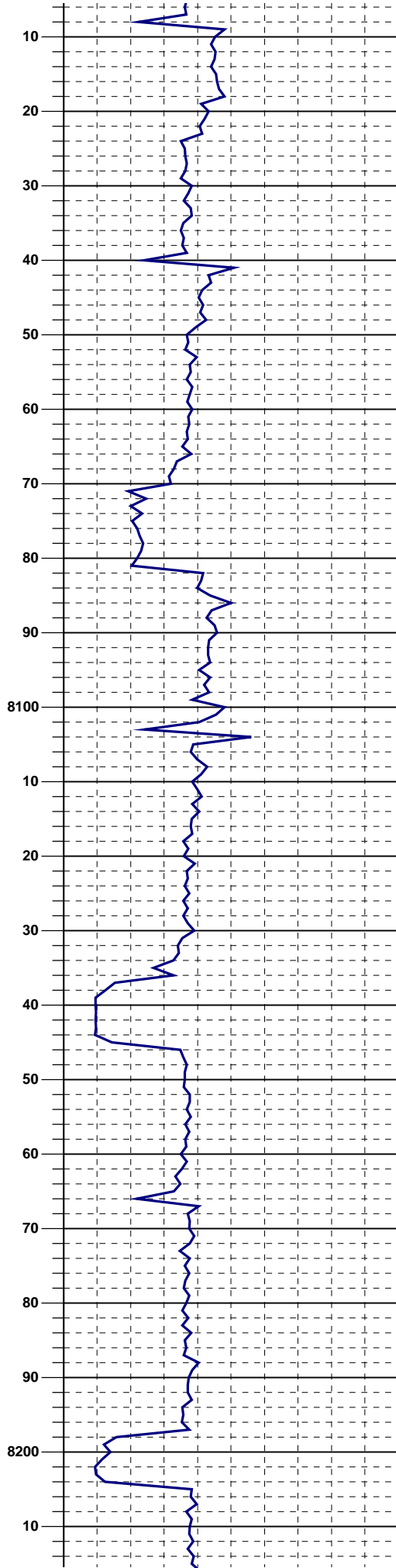
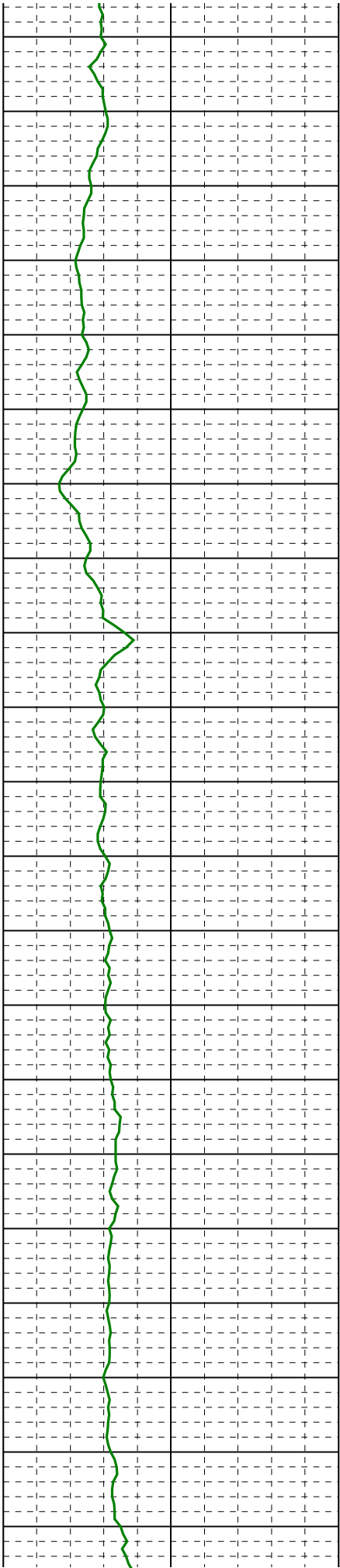


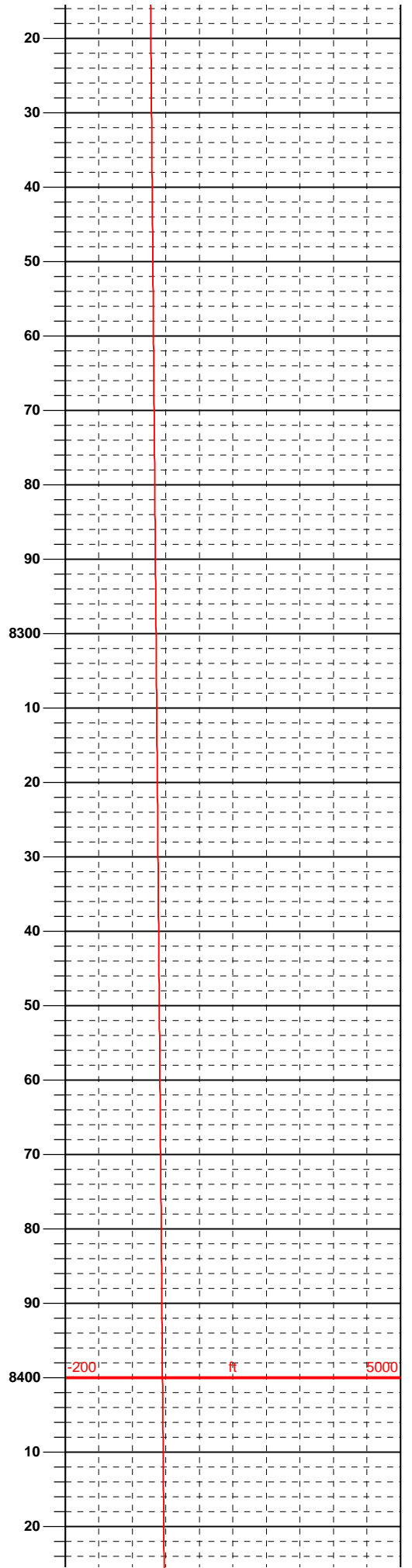
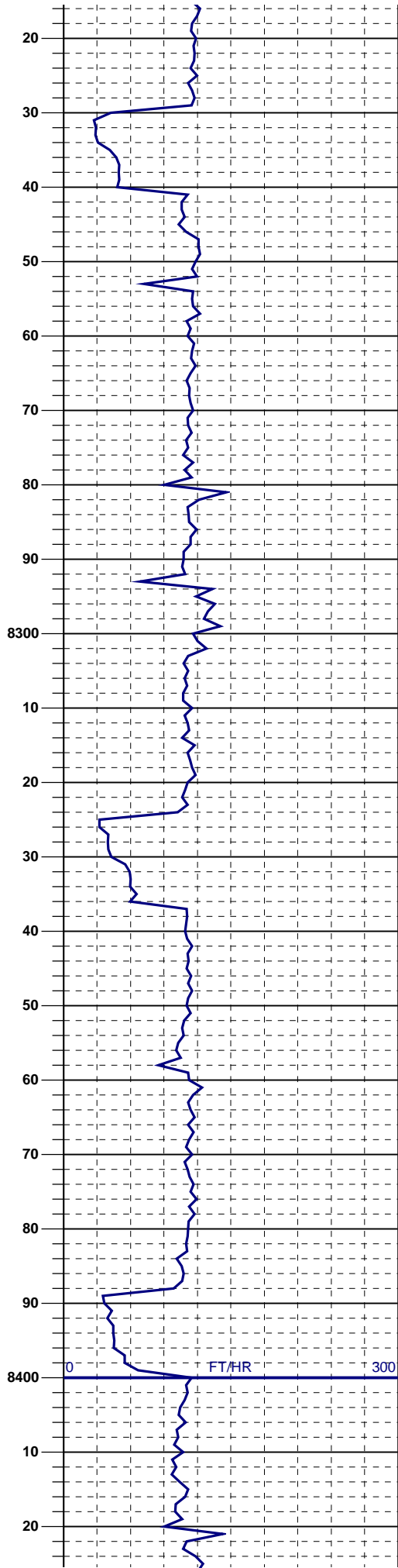
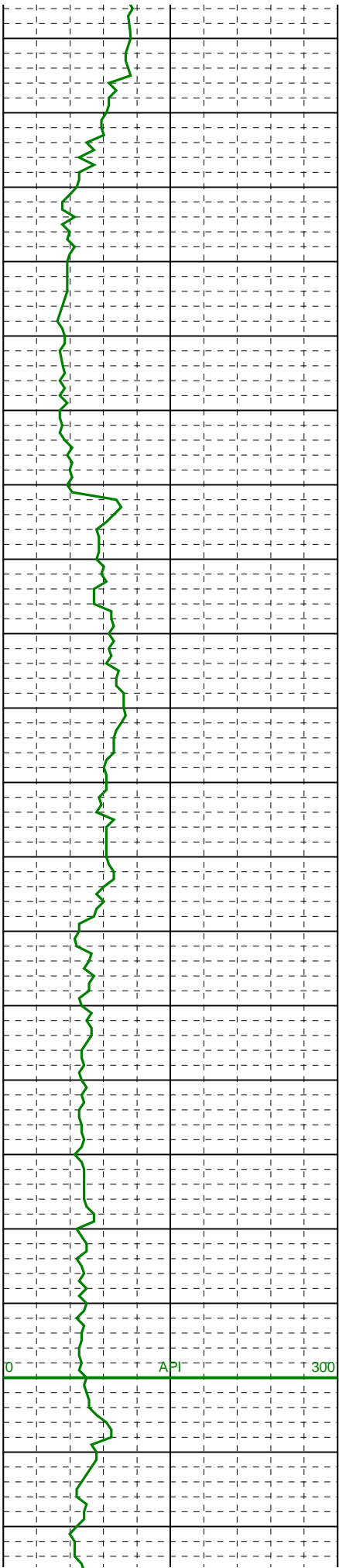


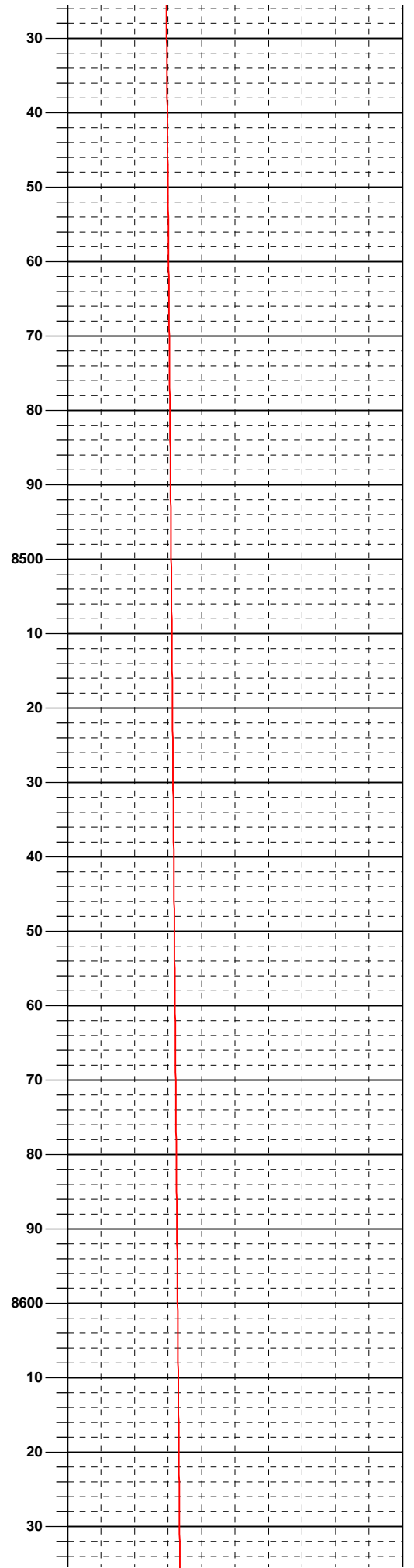
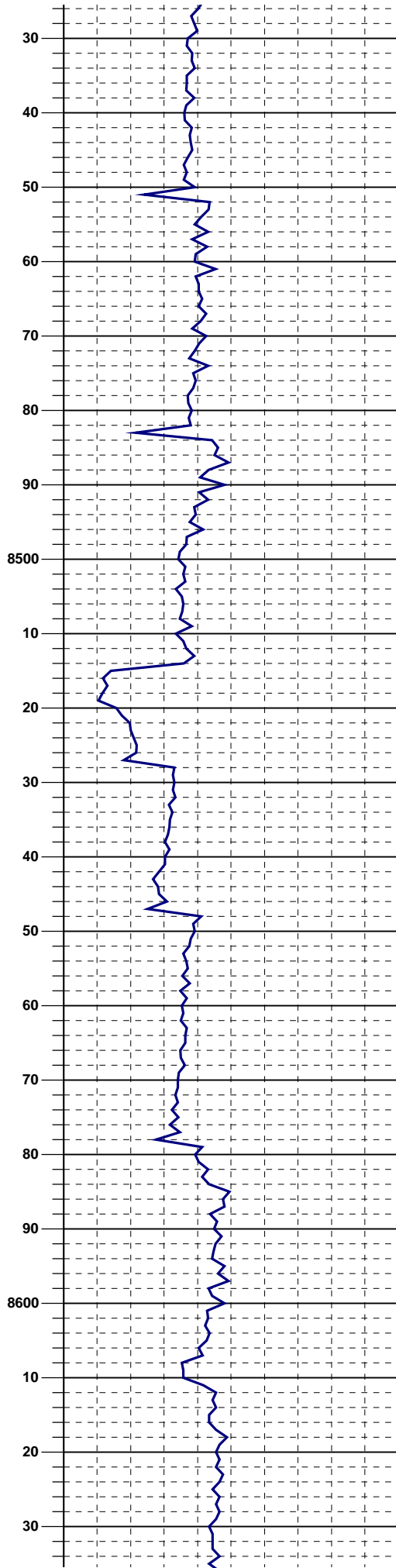
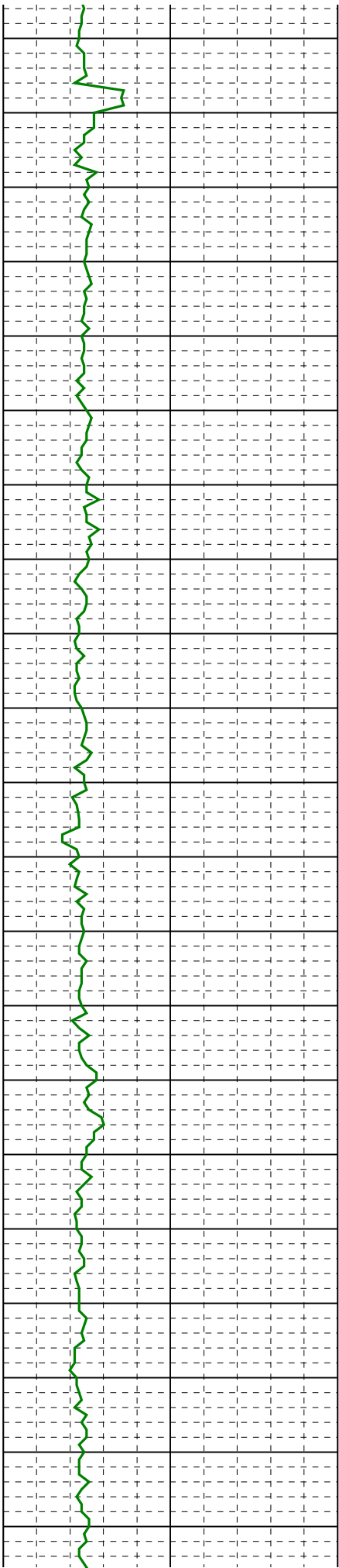


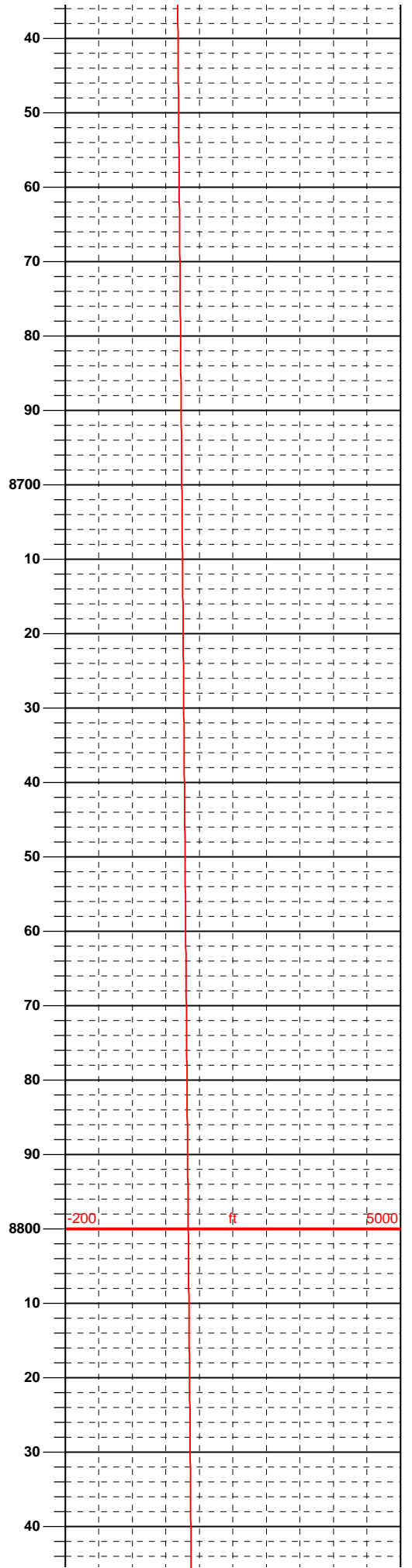
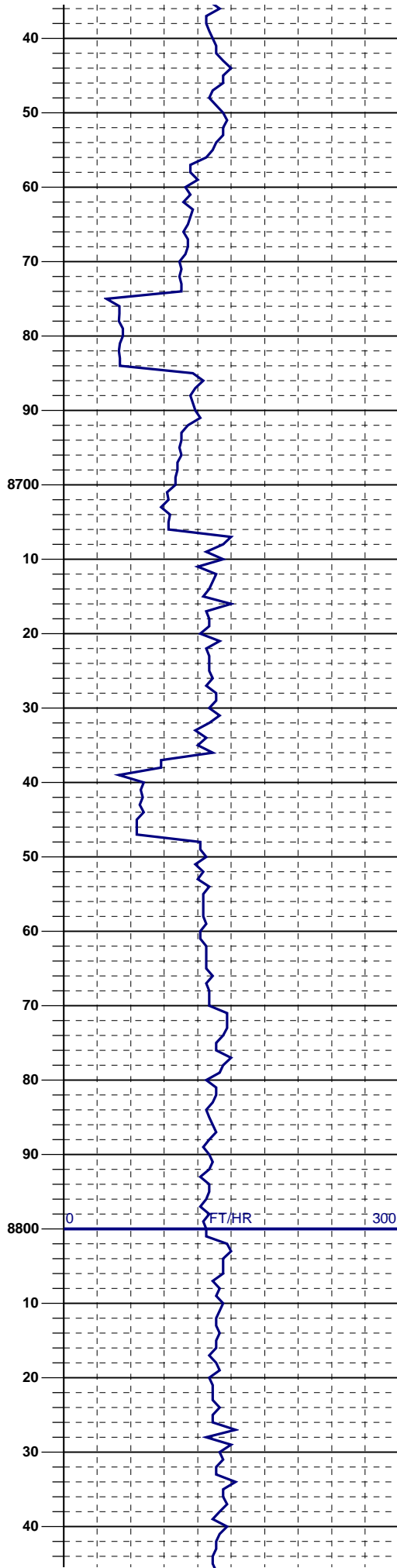
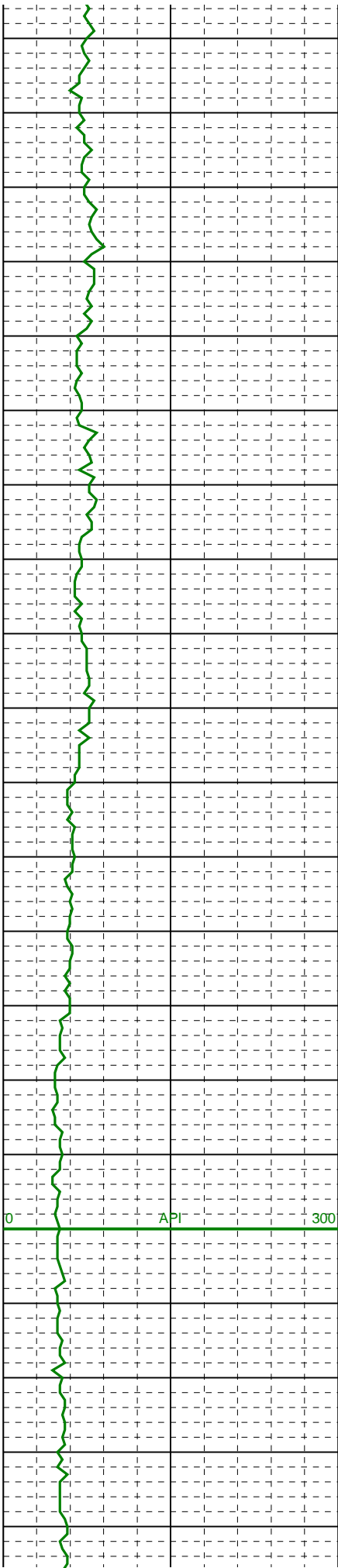


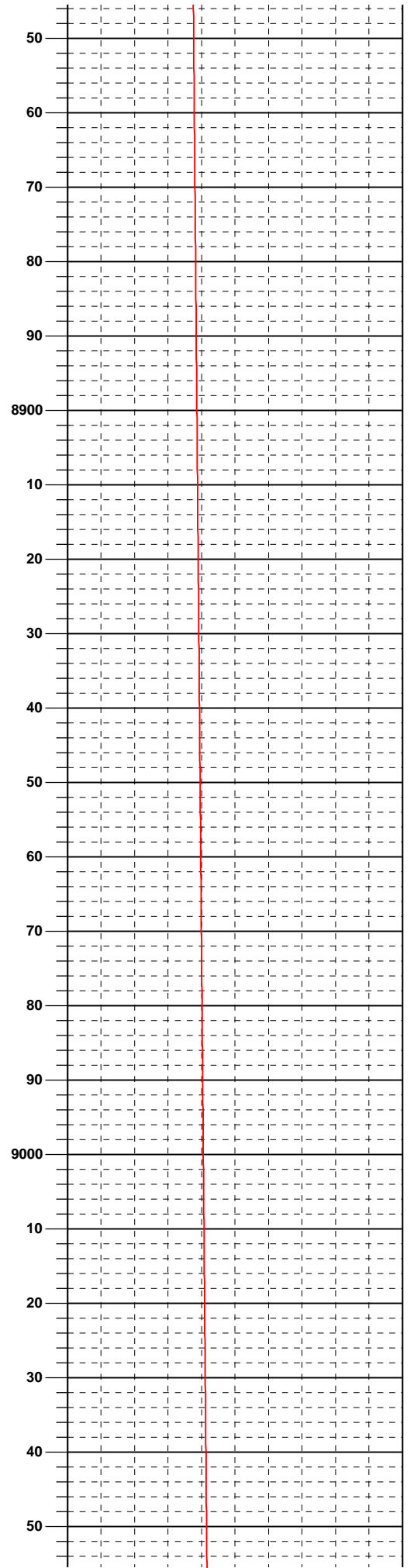
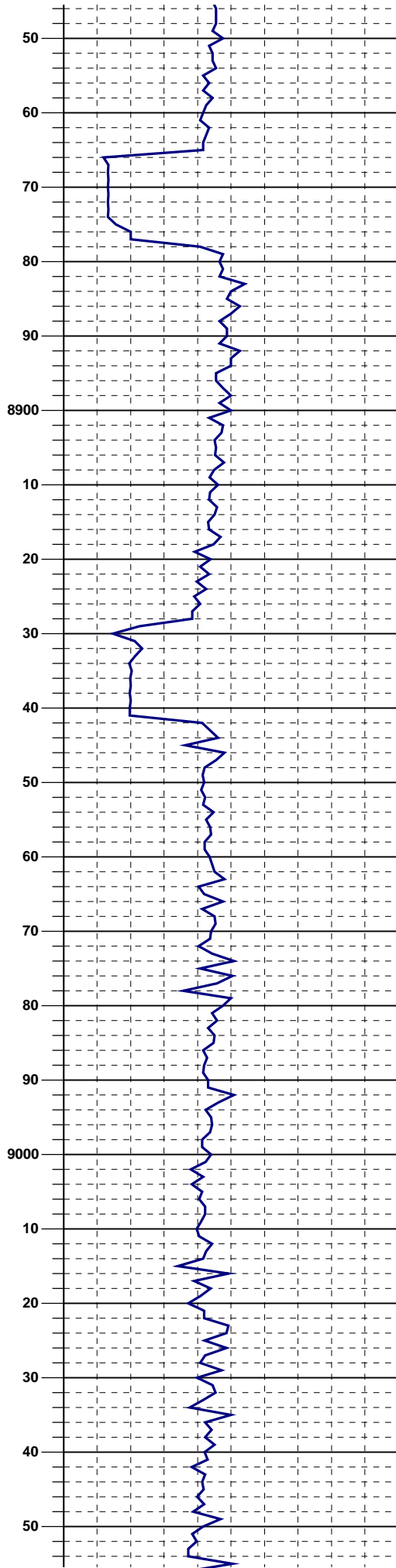
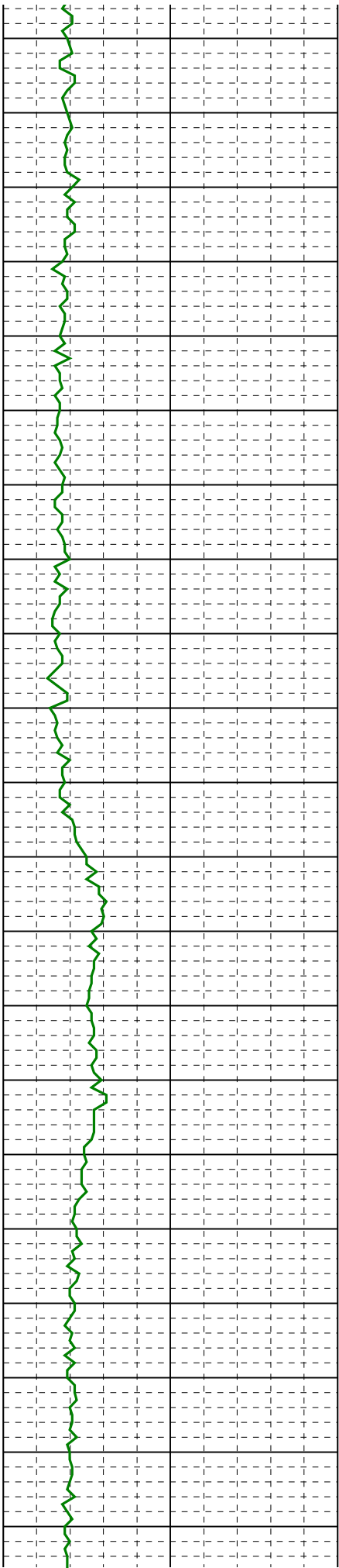


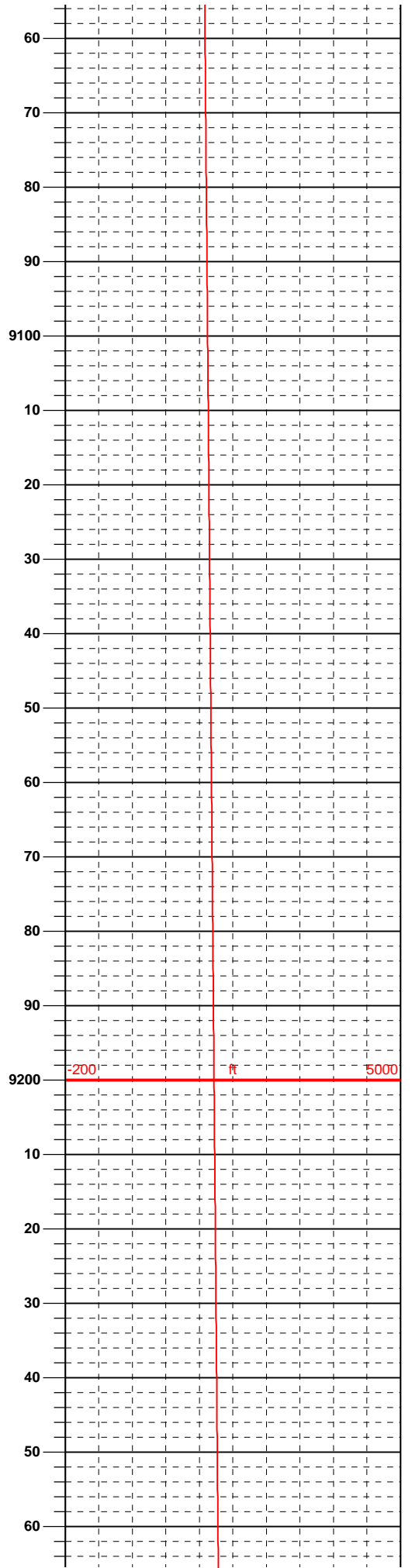
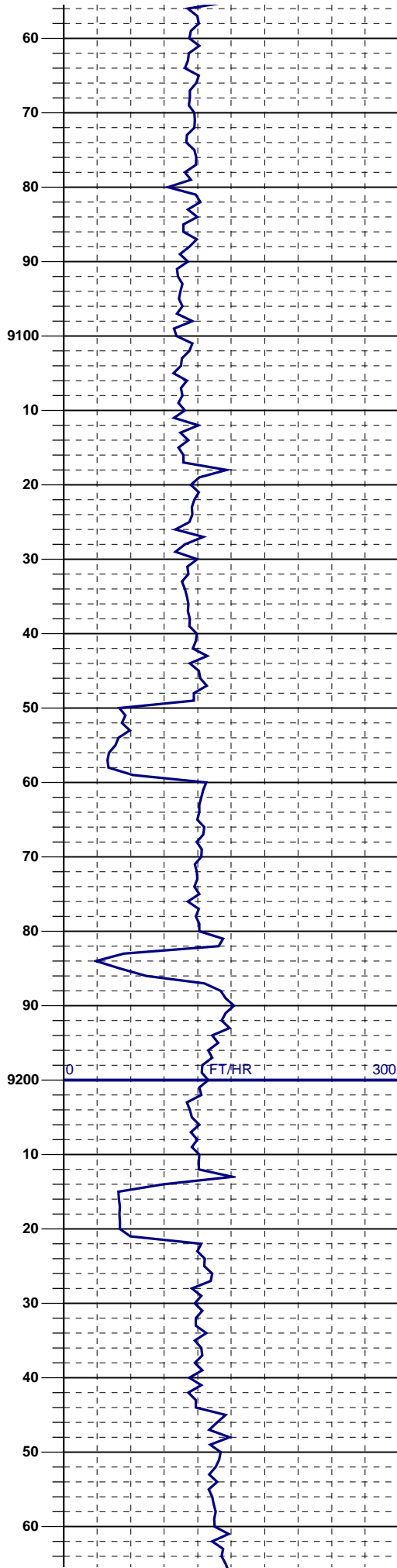
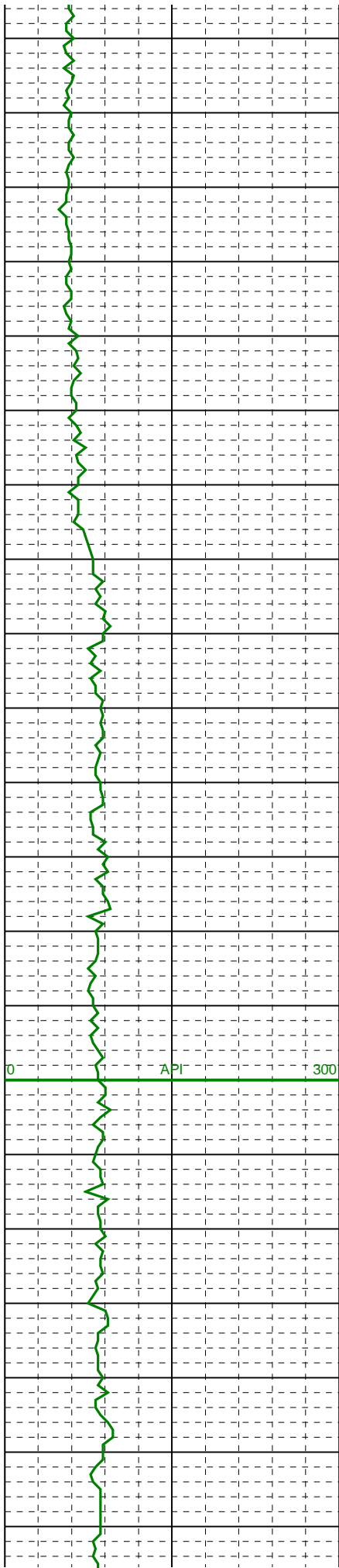


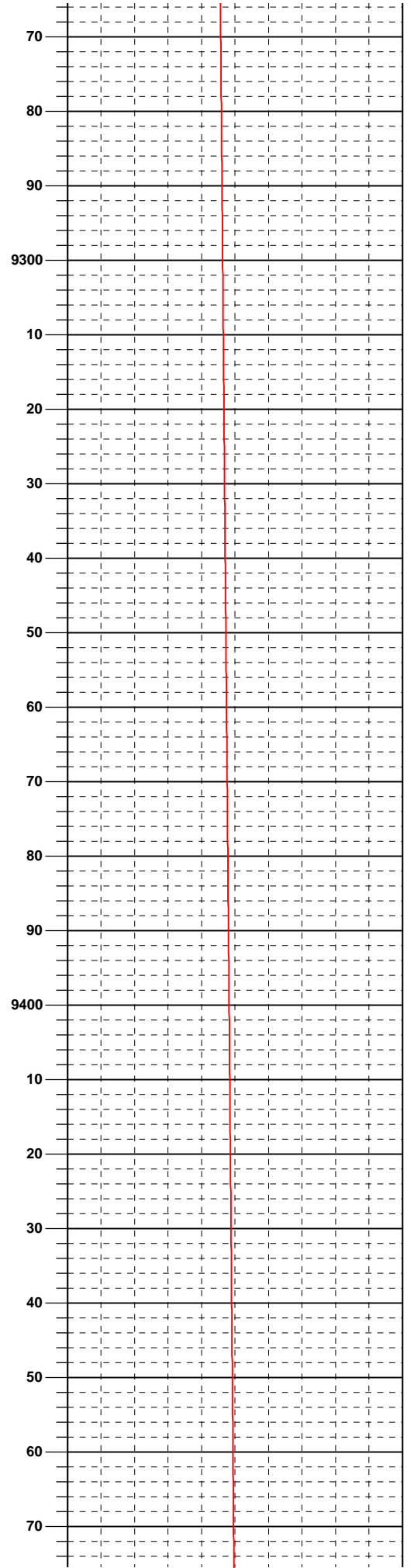
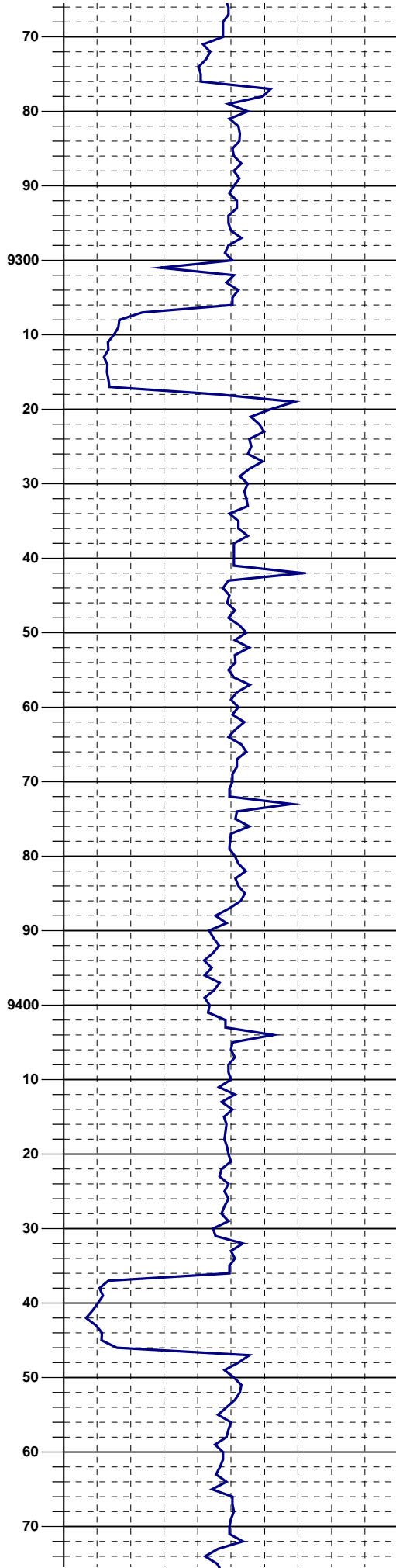
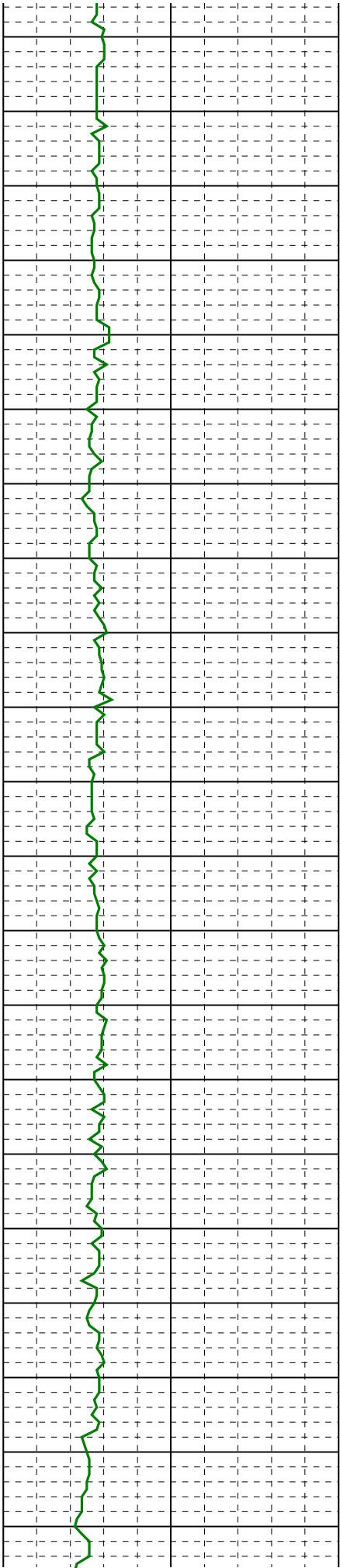


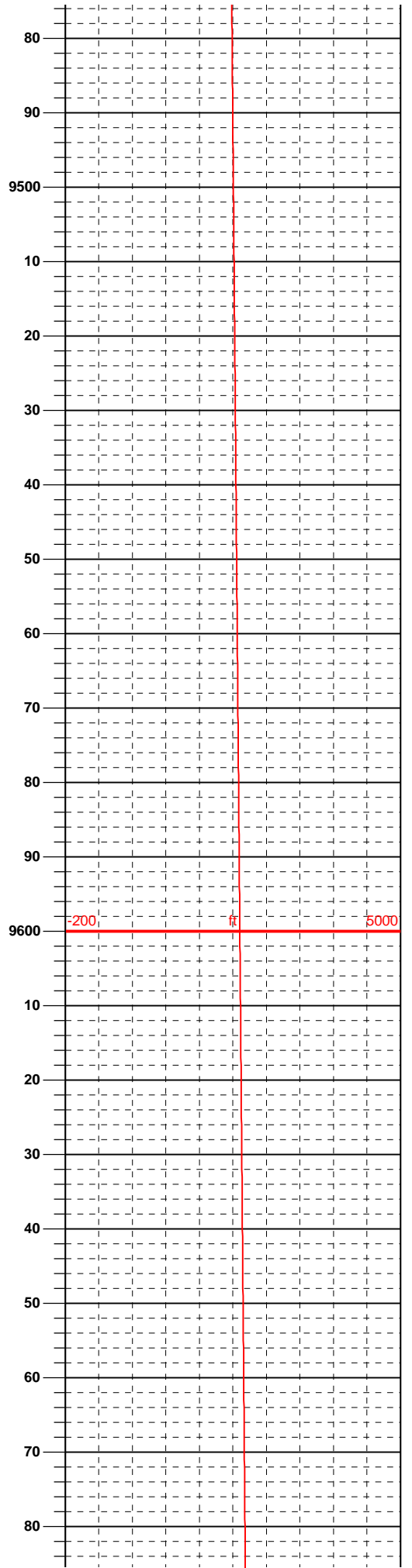
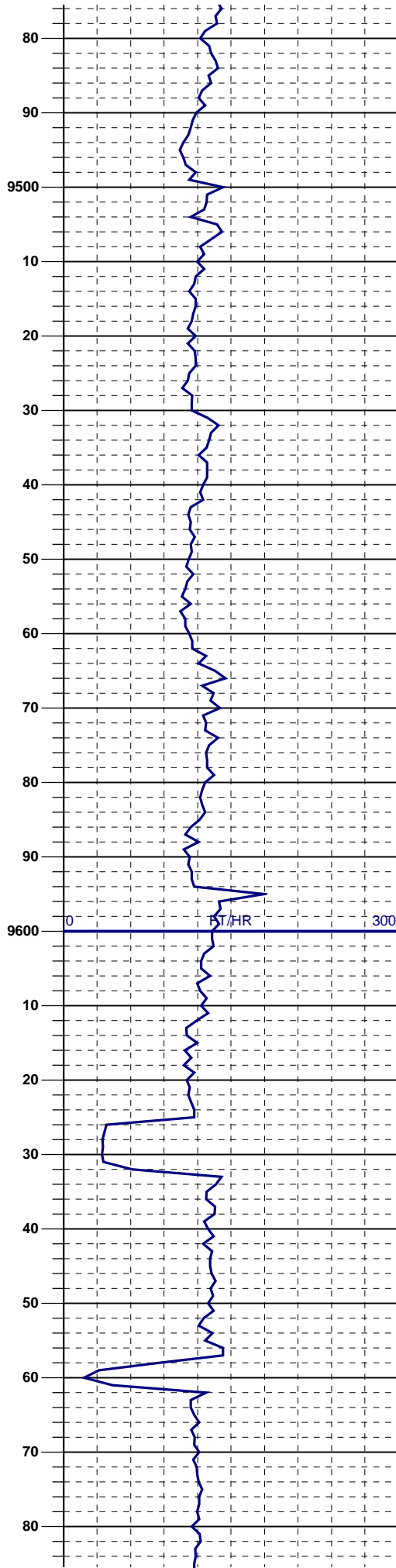
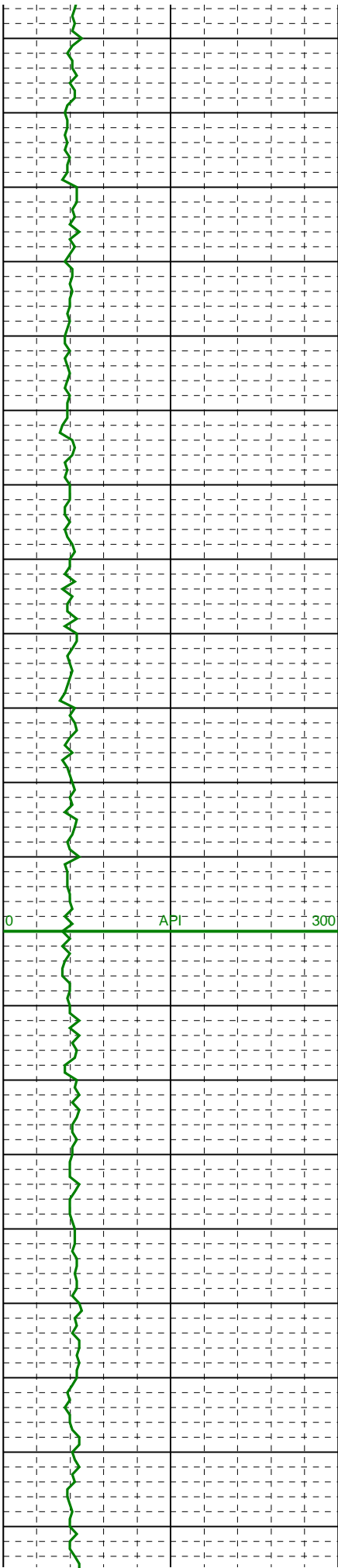


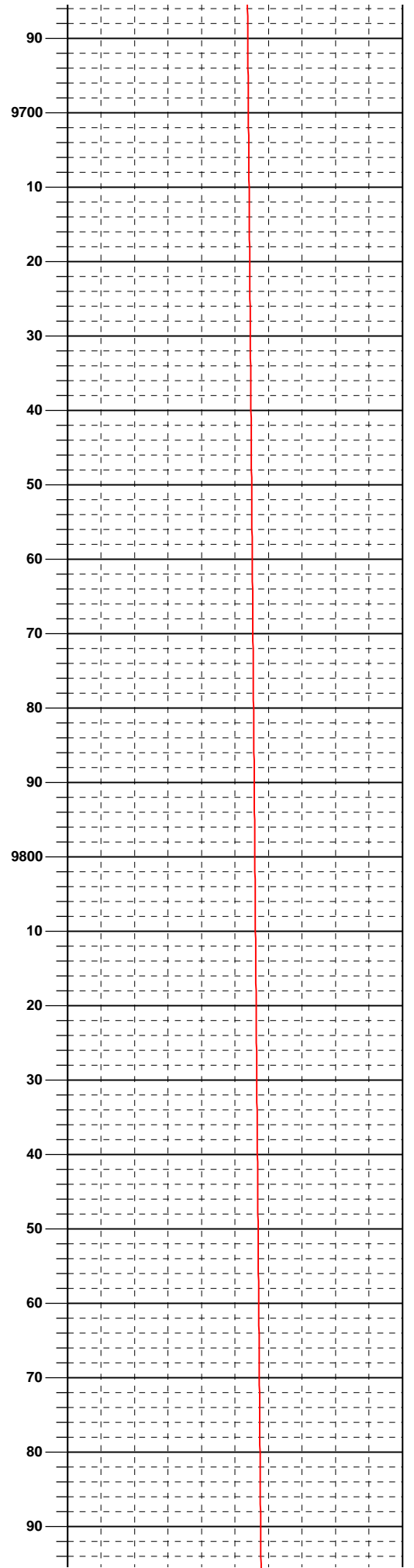
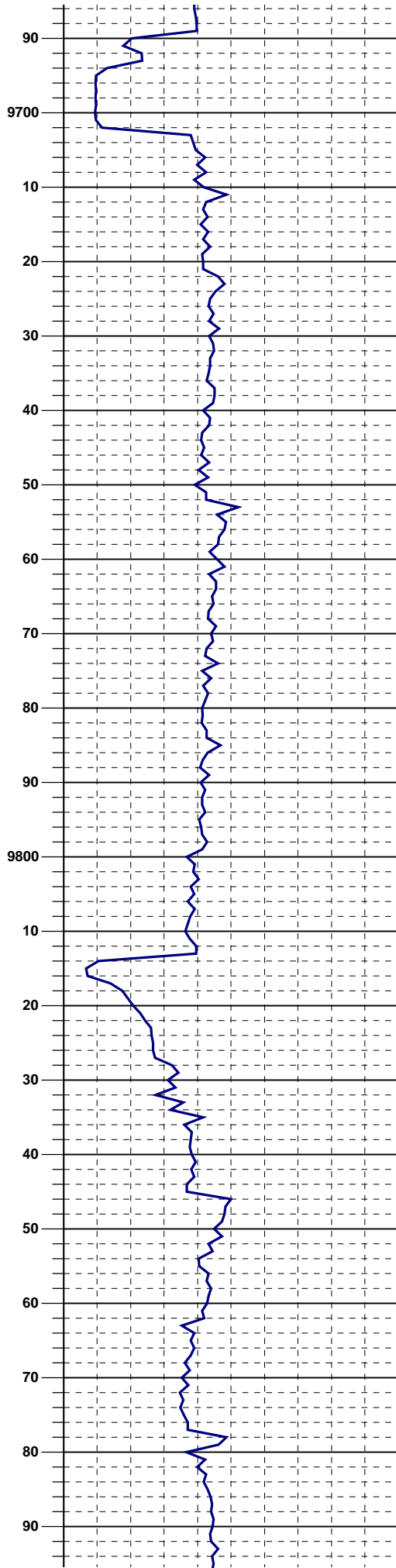
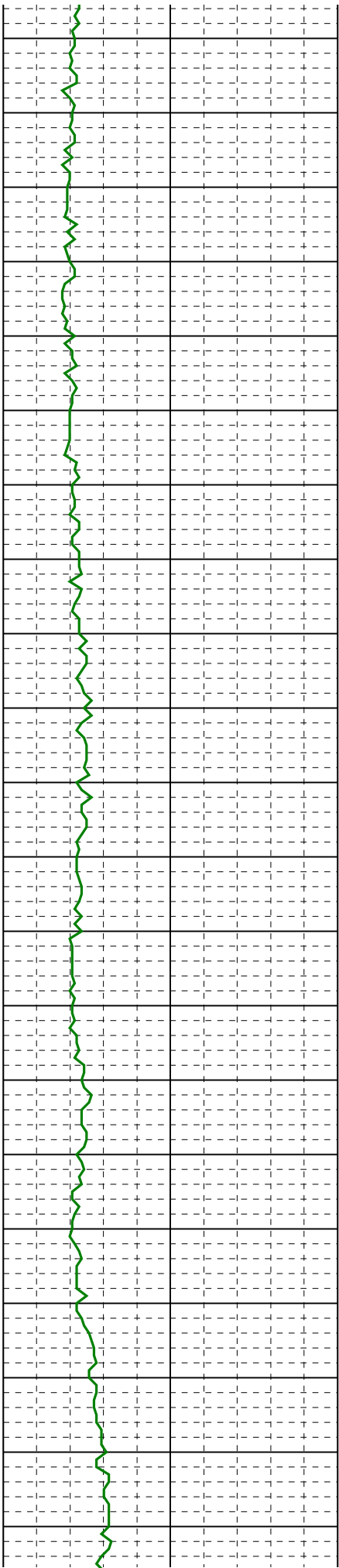


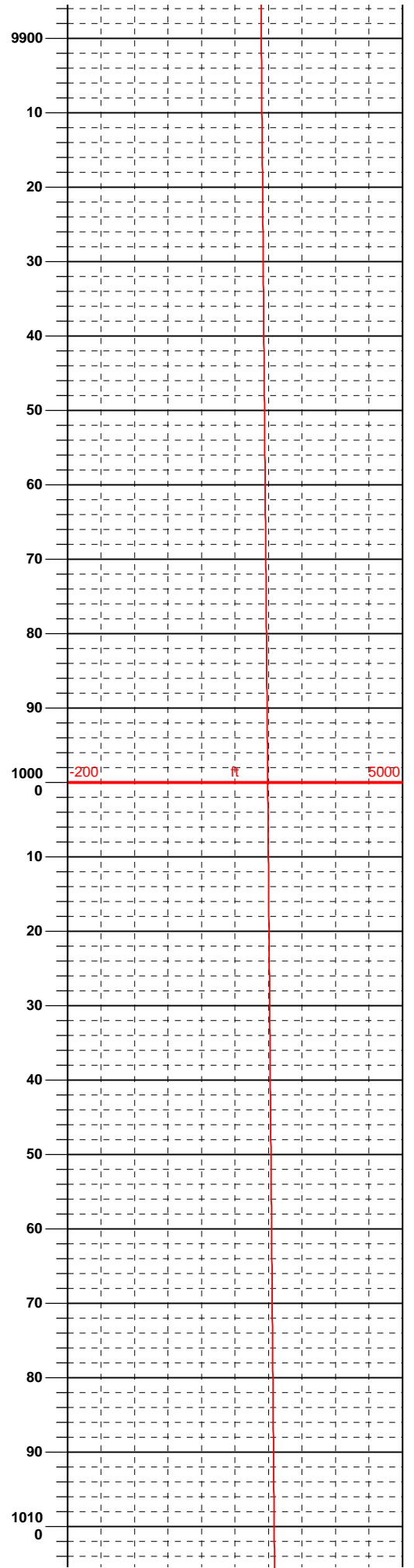
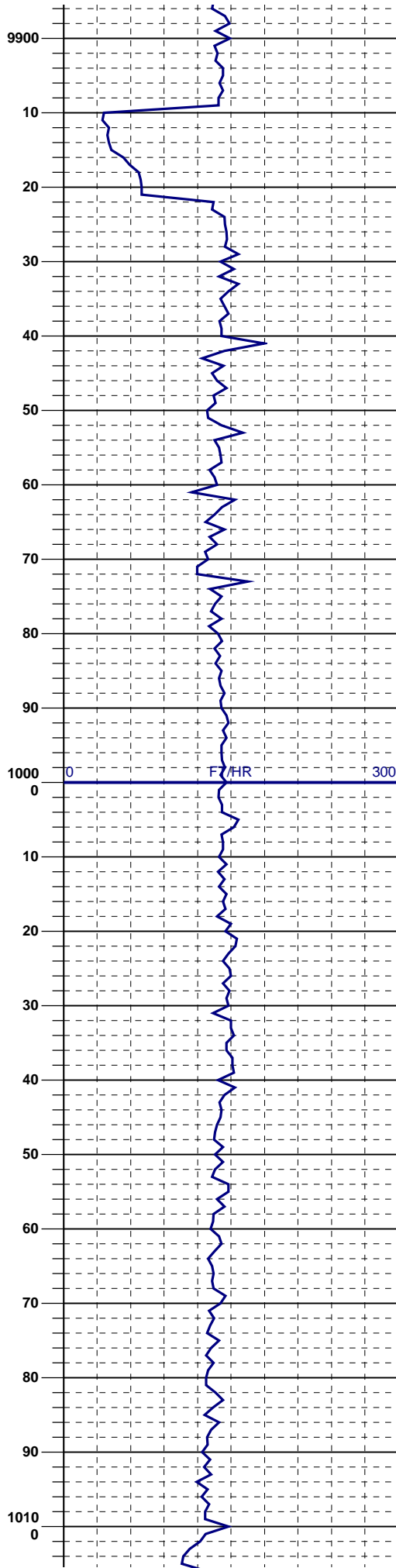
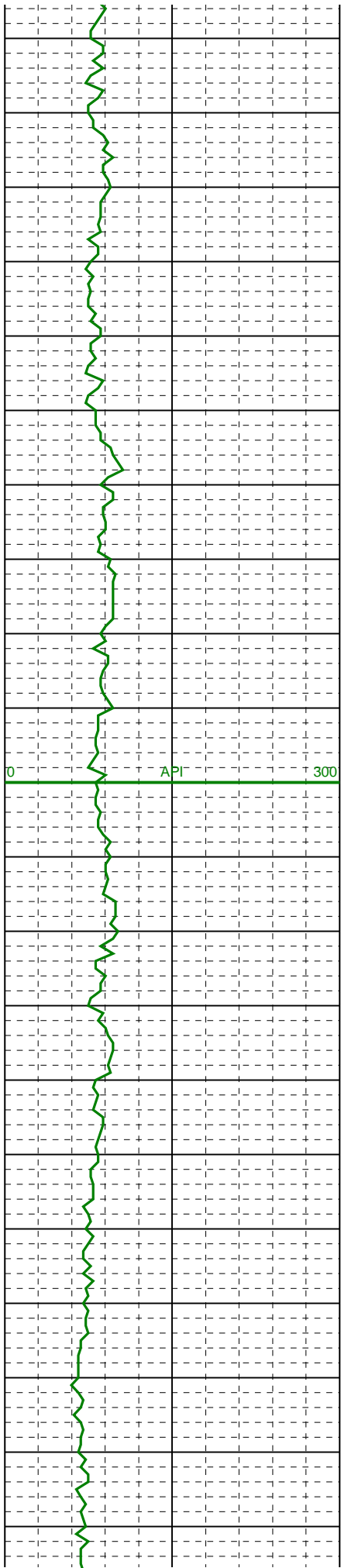


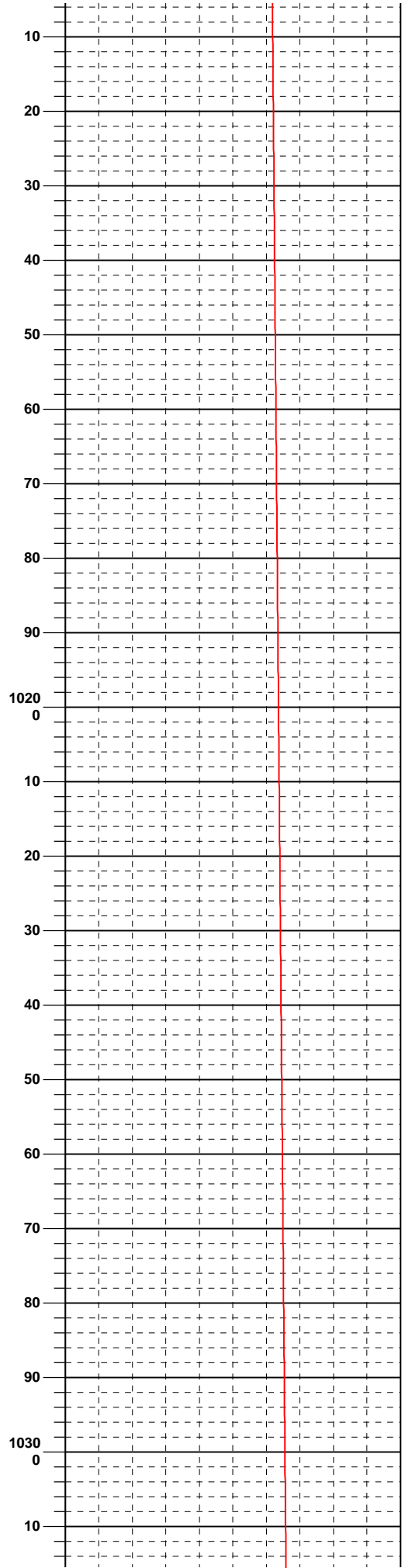
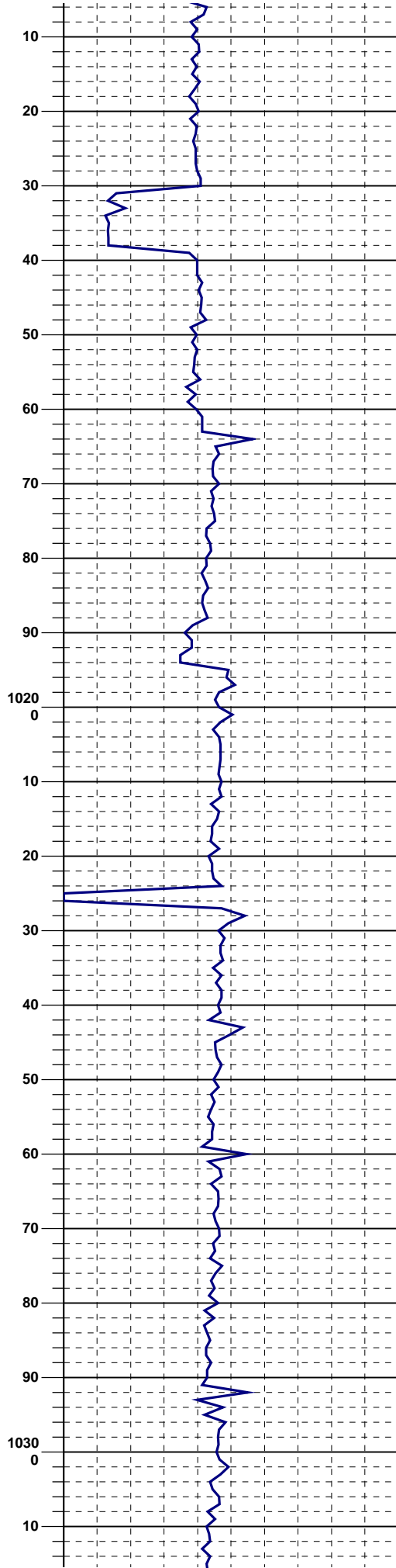
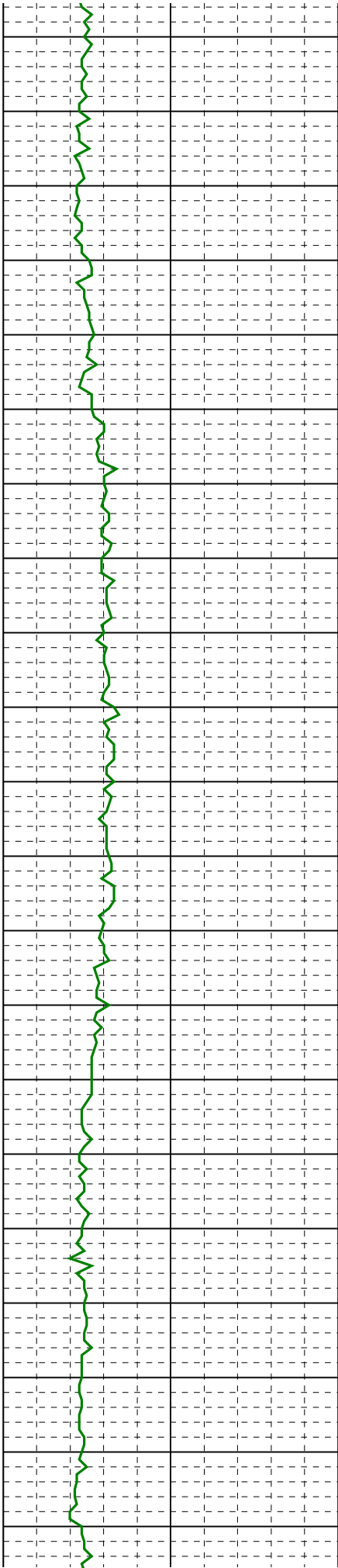


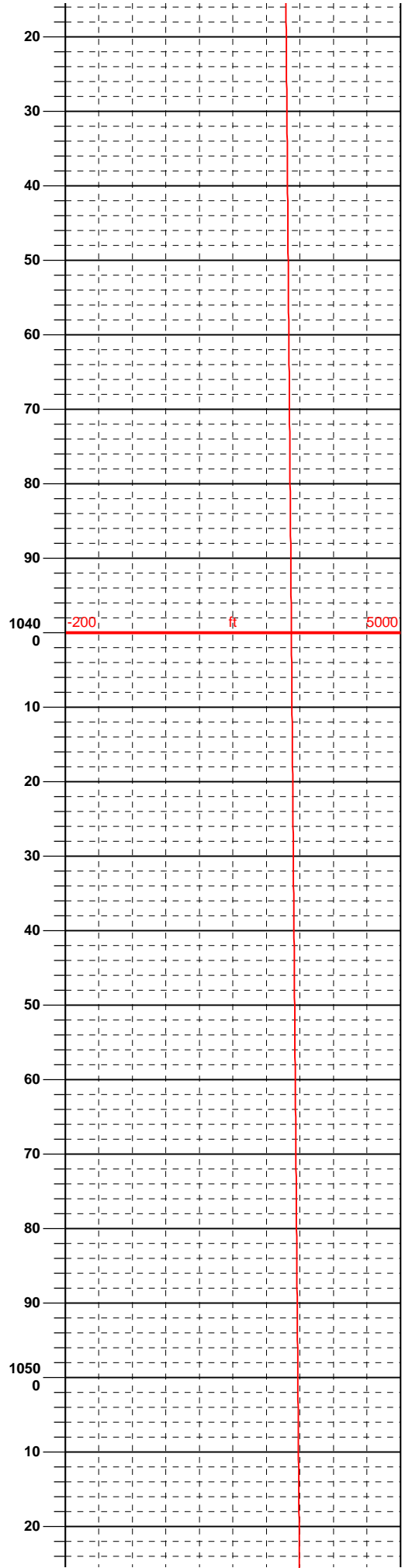
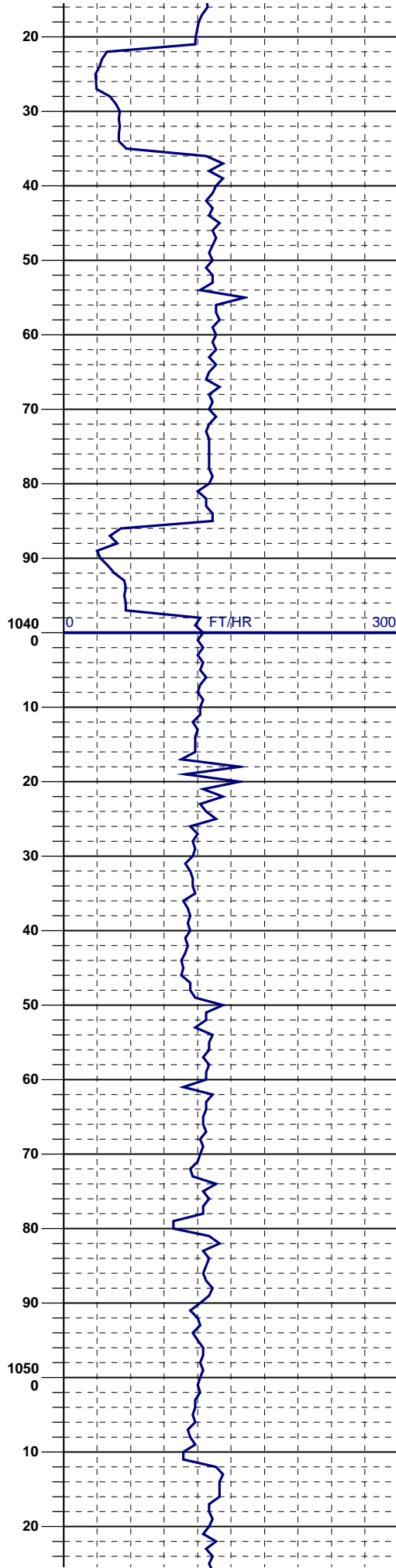
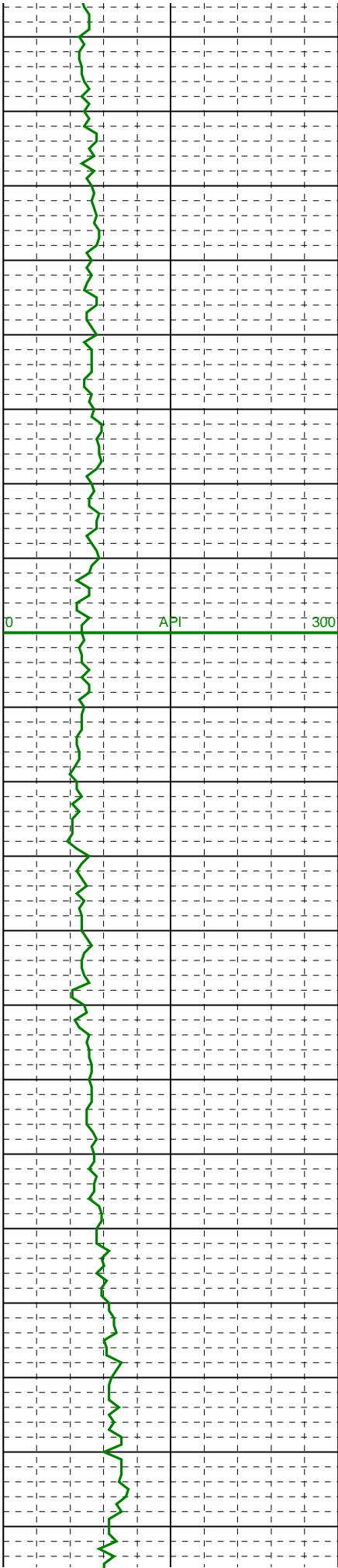


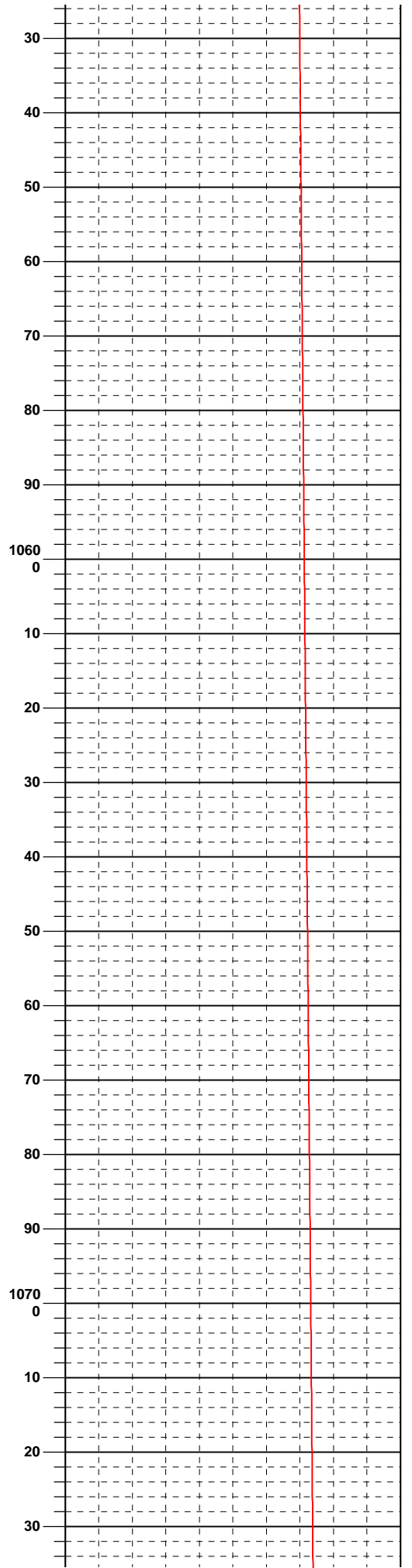
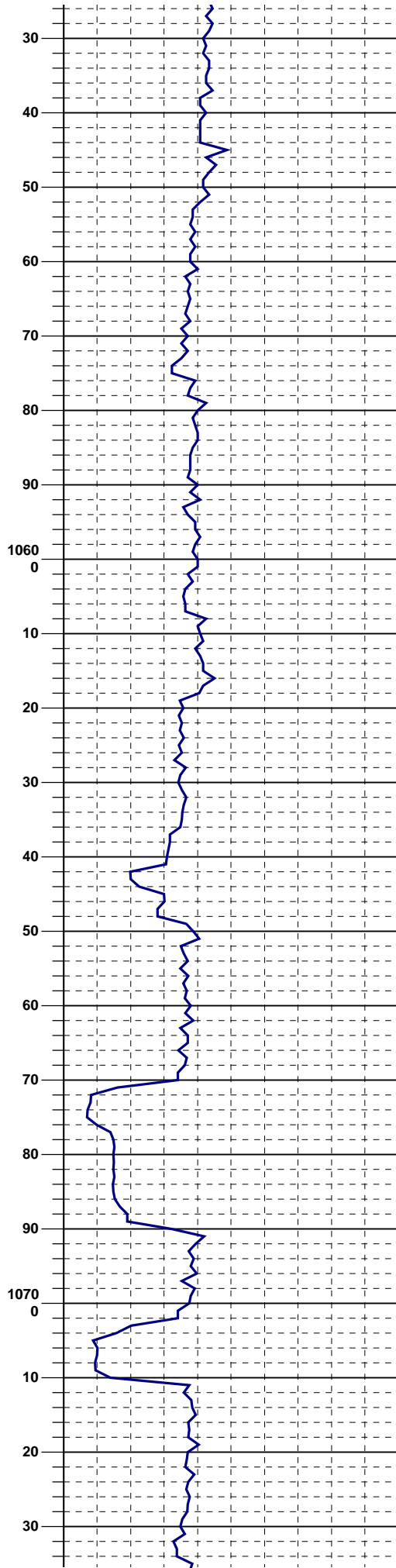
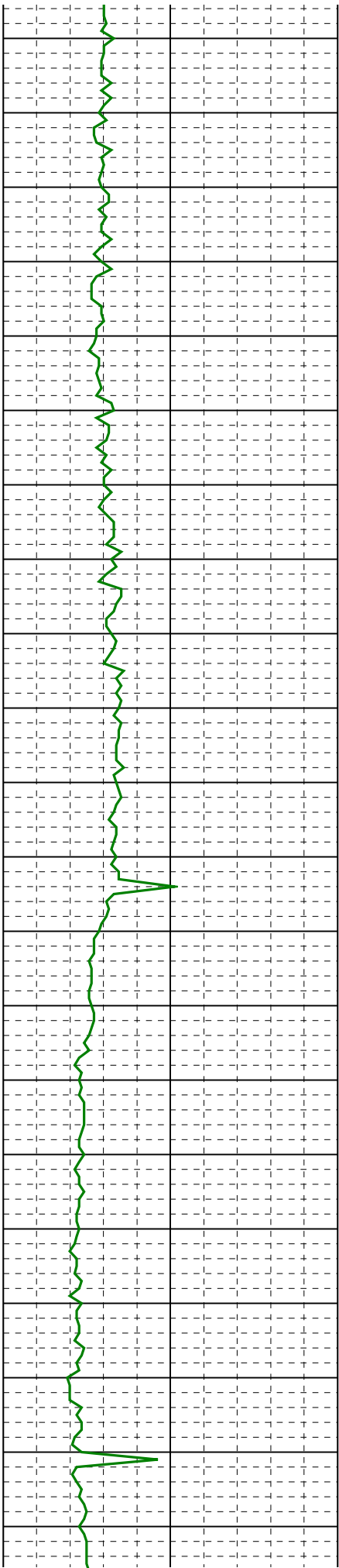


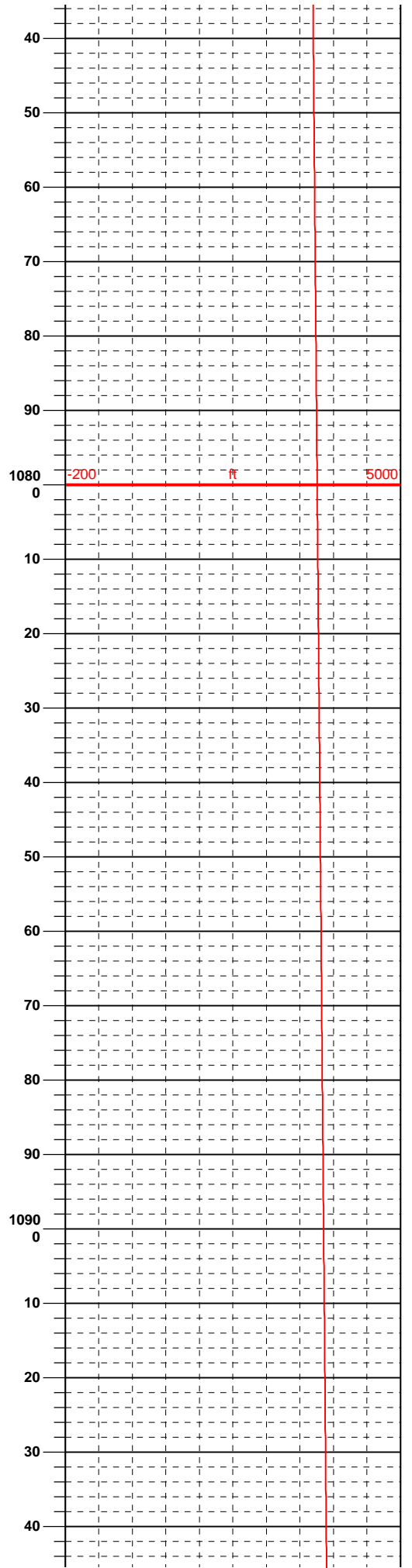
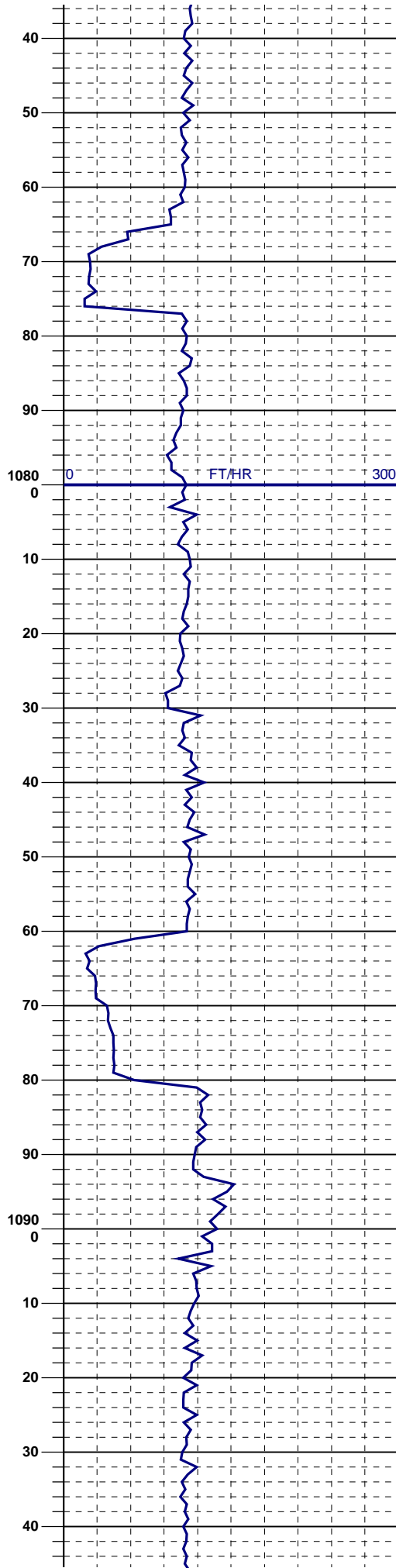
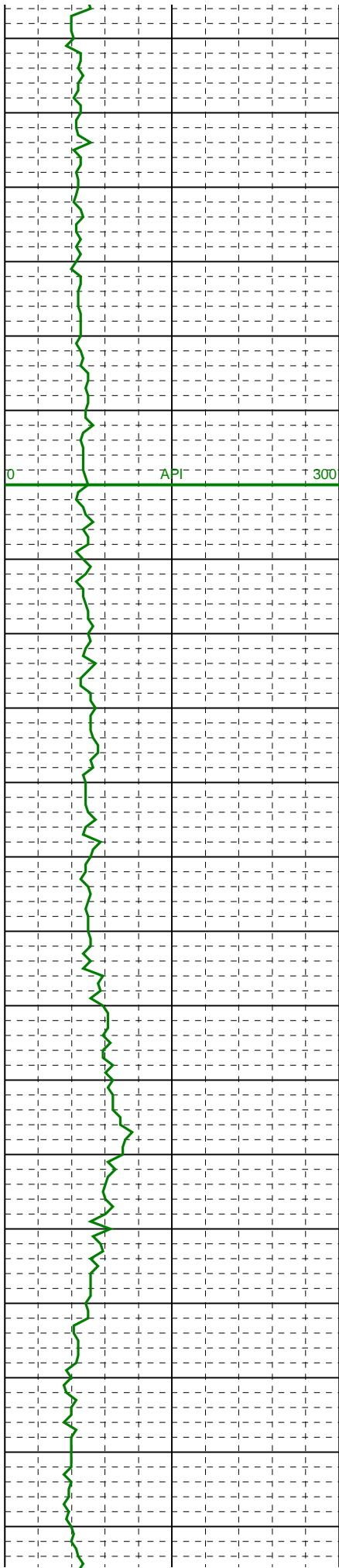


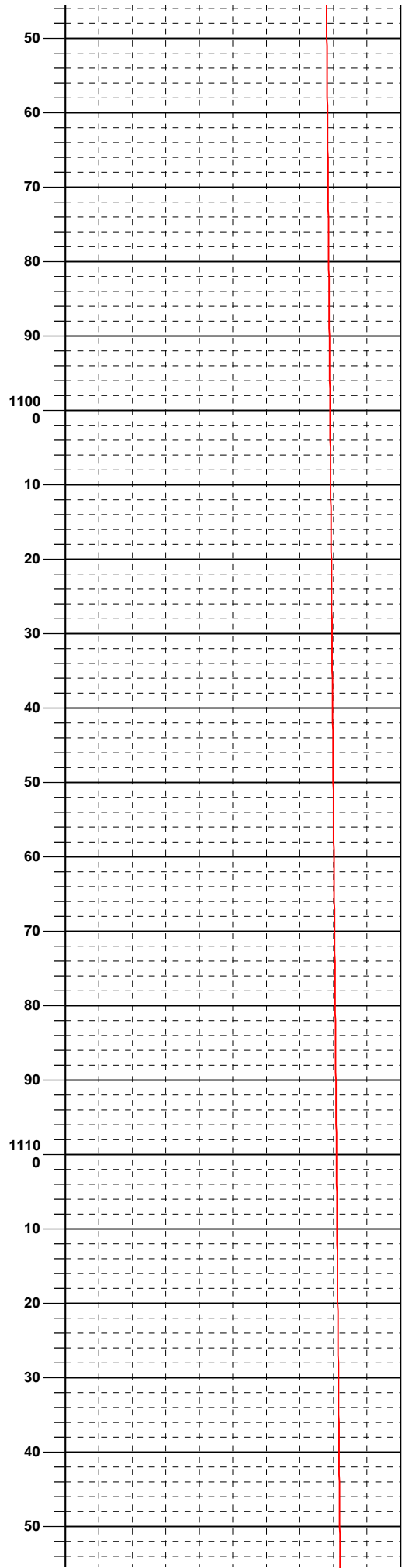
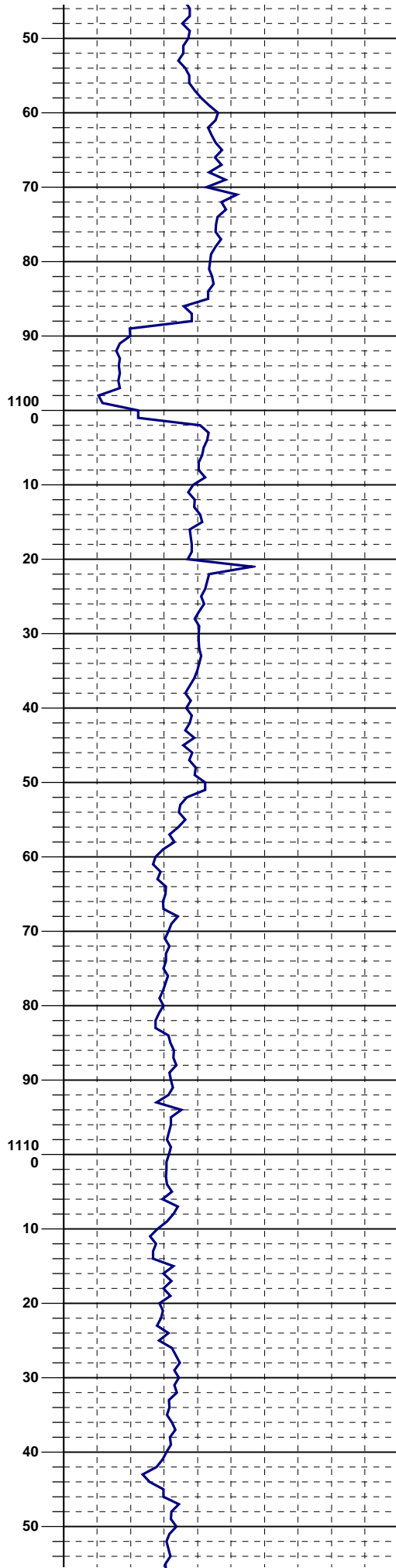
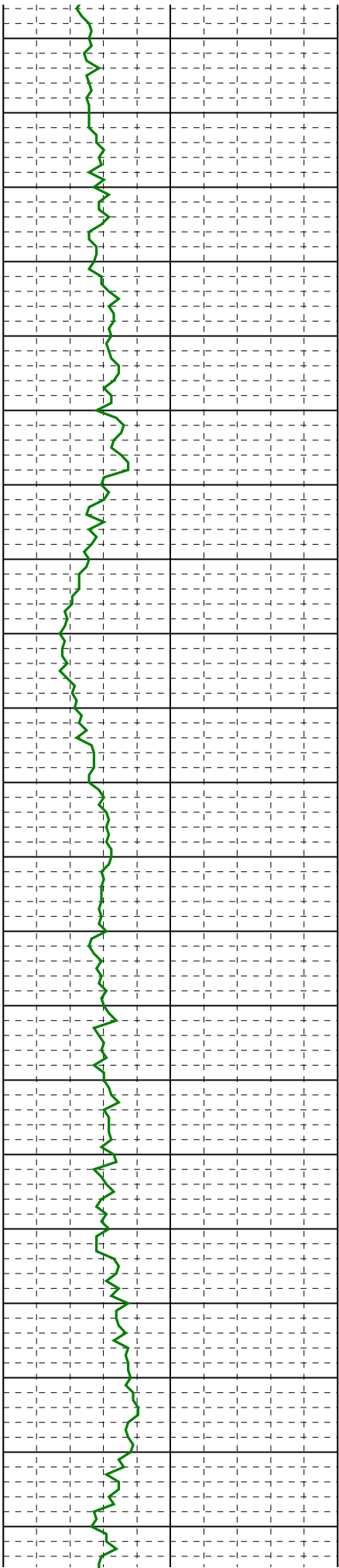


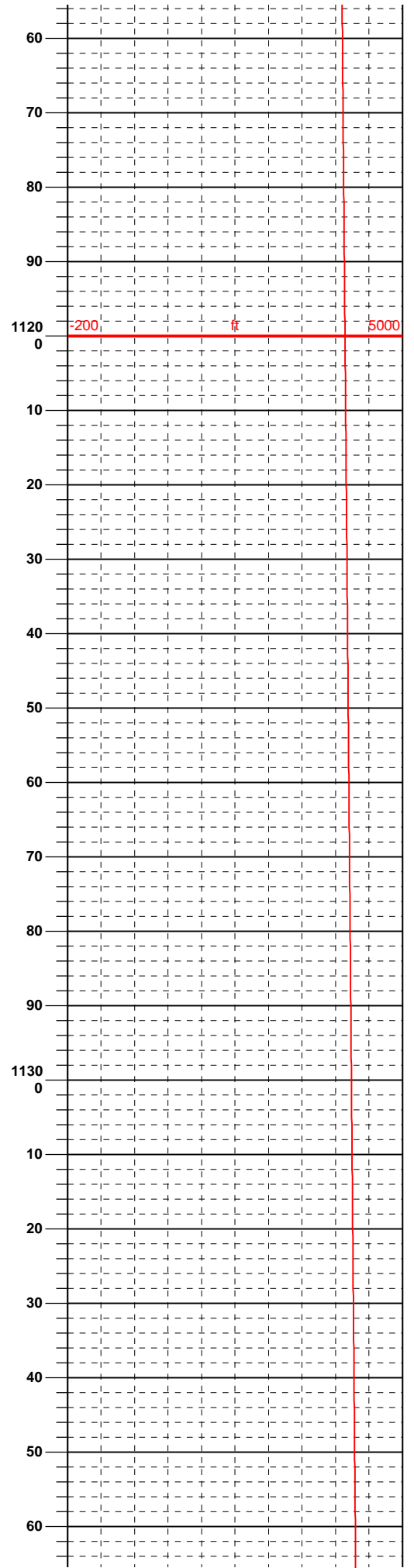
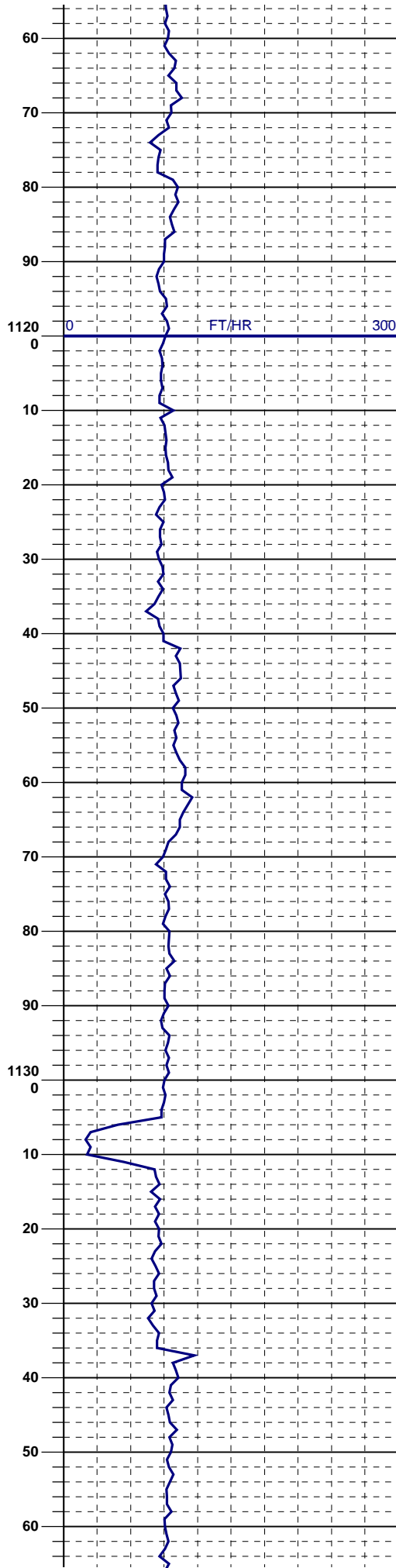
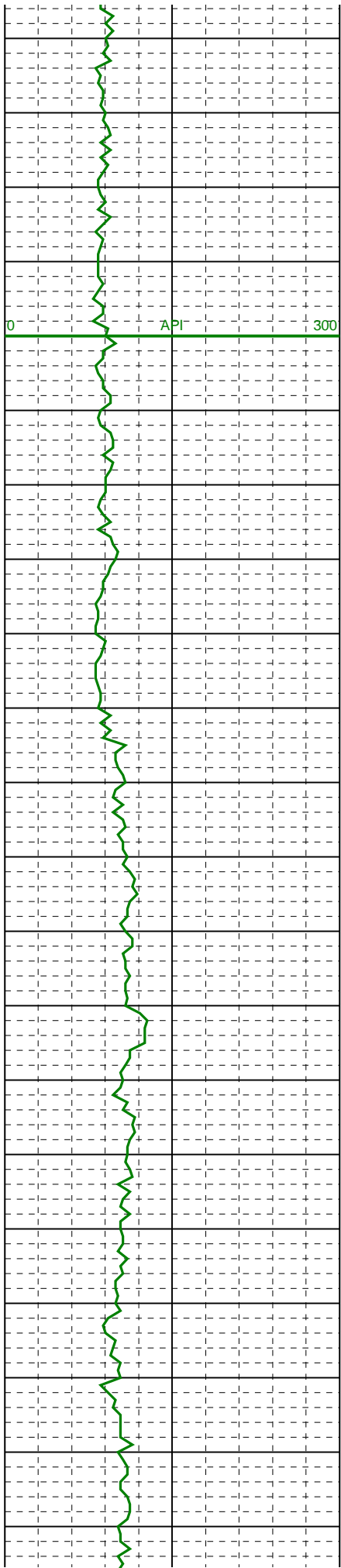


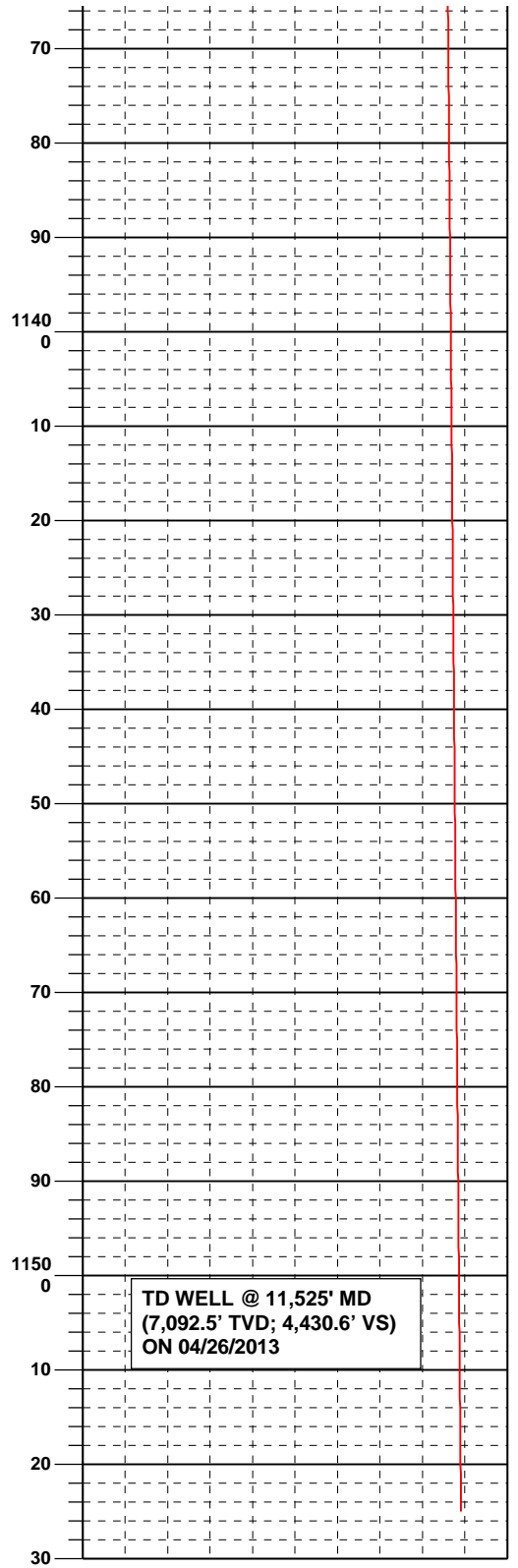
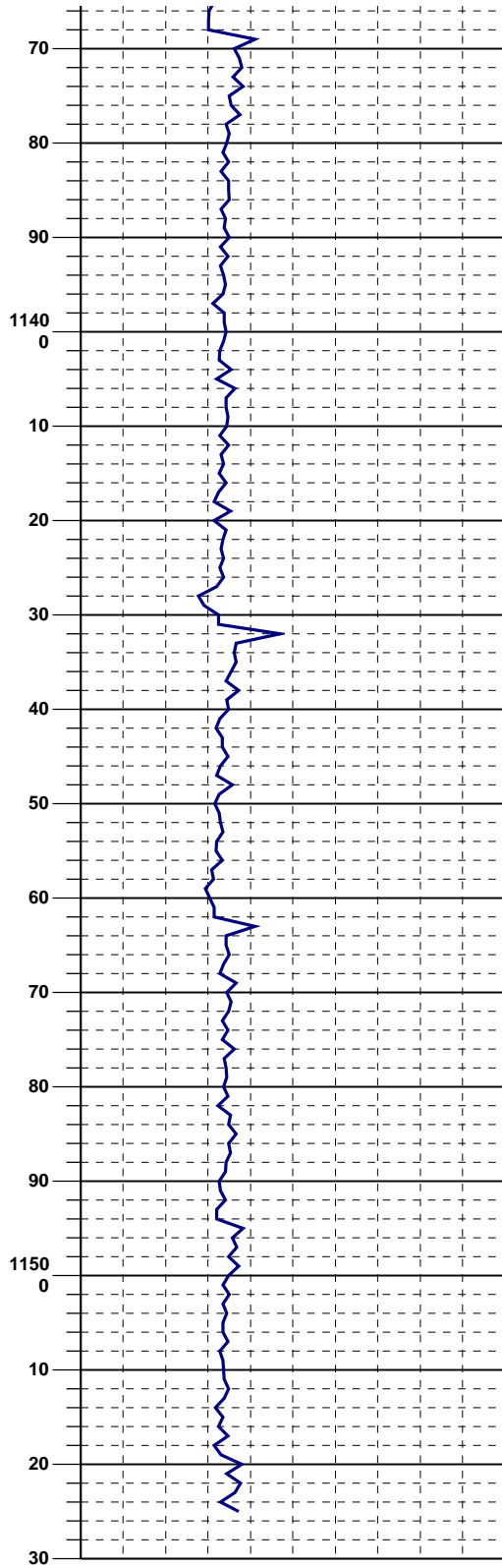
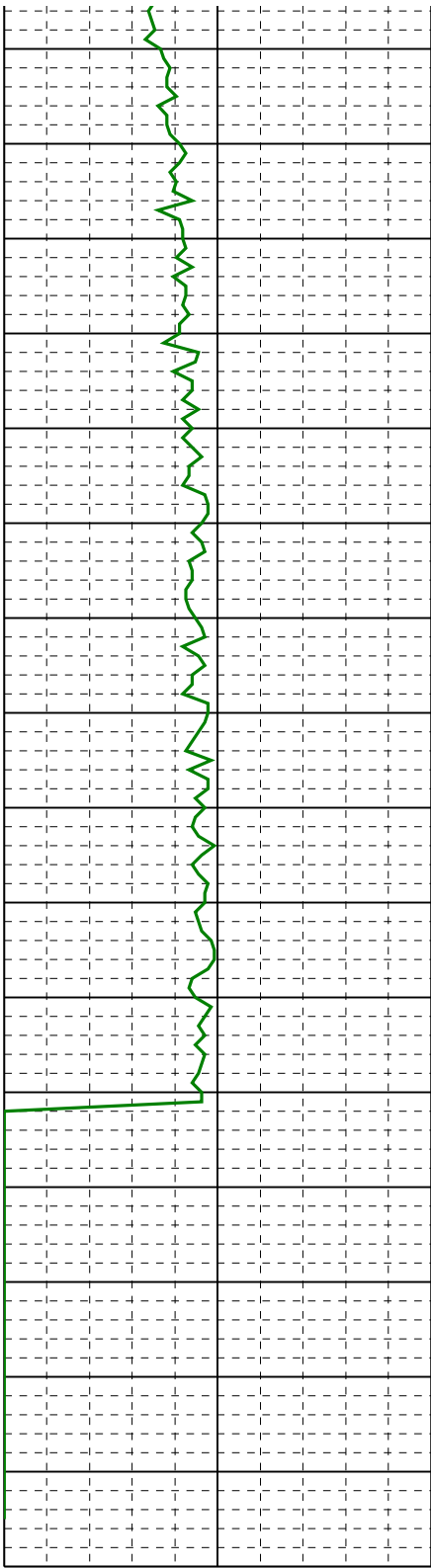












TD WELL @ 11,525' MD
(7,092.5' TVD; 4,430.6' VS)
ON 04/26/2013