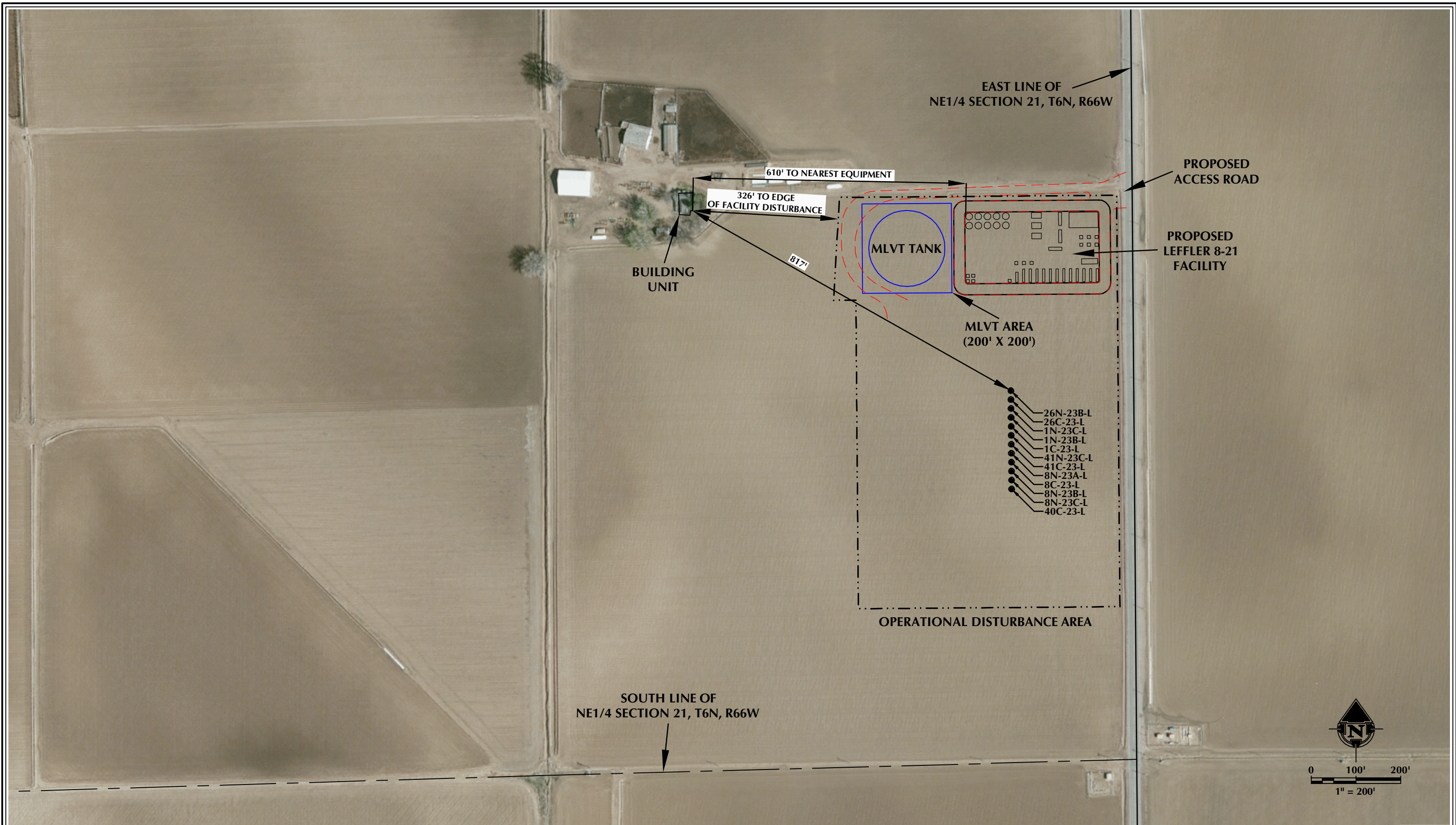


K:\SYNERGY RESOURCES\2016_120_LEFFLER_T6N_R66W_21DWS\LEFFLER.dwg, 1/31/2017 2:53:30 PM, jhe



NOTES:

1. EQUIPMENT PLACEMENT IS APPROXIMATE AND SUBJECT TO MINOR MODIFICATION DUE TO SPECIFIC CIRCUMSTANCES.

DATA SOURCES:
- AERIAL COURTESY OF ESRI, INC.



LOVELAND OFFICE
1635 Foxtrail Drive, Suite 204
Loveland, Colorado 80538
Phone 970-776-4331

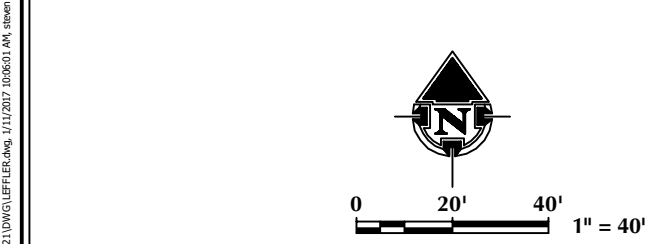
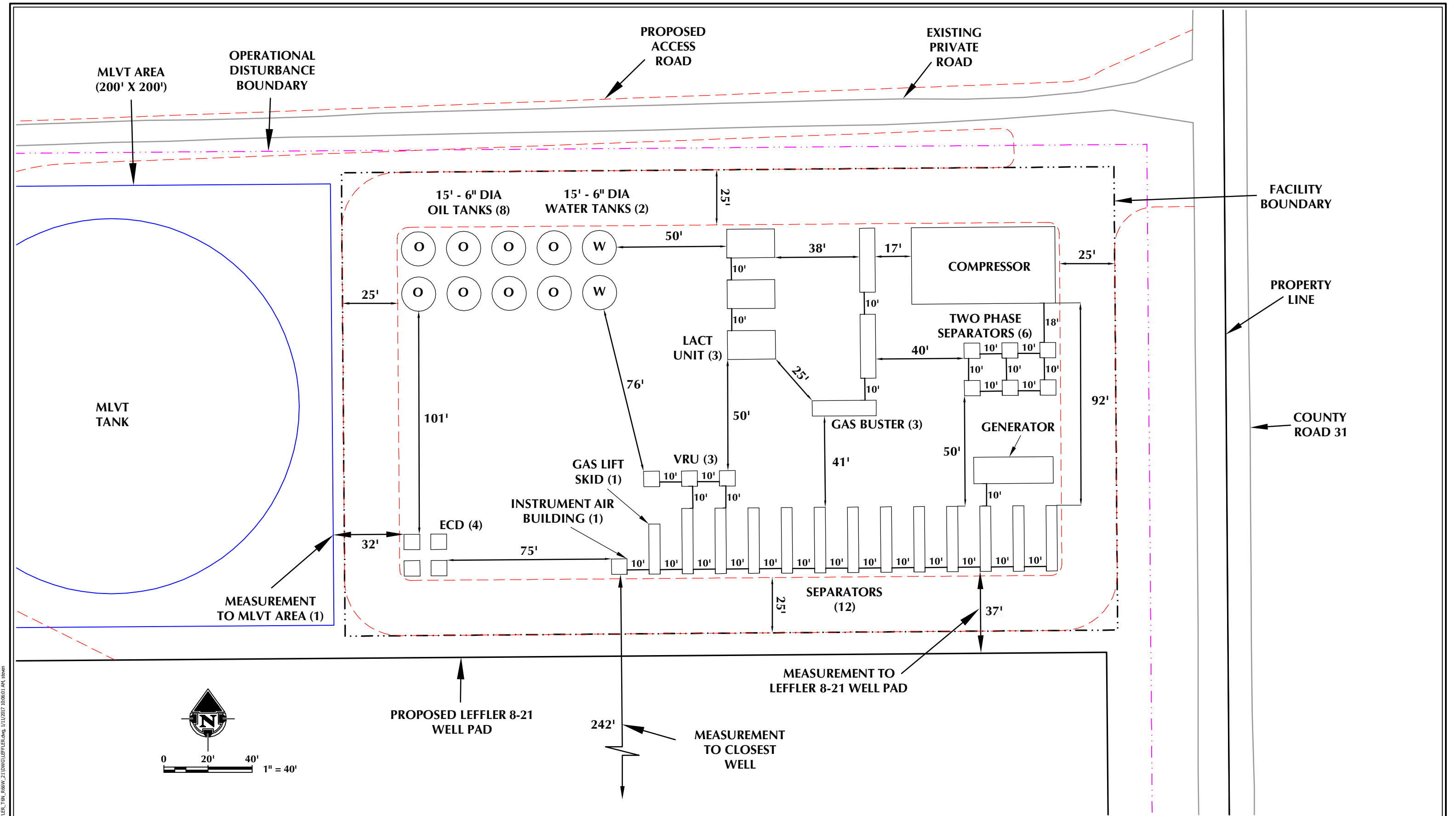
SHERIDAN OFFICE
1095 Saberton Avenue
Sheridan, Wyoming 82801
Phone 307-674-0609

CONSULTING, LLC

 **SYNERGY**
RESOURCES CORPORATION
1625 Broadway, Suite 300
Denver, Colorado 80202

SCALE: 1" = 200'
DATE SURVEYED: 11/29/16
DATE: 1/9/17
DRAFTER: CDJ
REVISED:

FACILITY LOCATION DRAWING (A)
LEFFLER 8-21
LOCATED IN SECTION 21, T6N, R66W, 6TH P.M.
WELD COUNTY, COLORADO



<p>NOTES:</p> <p>1. EQUIPMENT PLACEMENT IS APPROXIMATE AND SUBJECT TO MINOR MODIFICATION DUE TO SPECIFIC CIRCUMSTANCES.</p>		<p>LOVELAND OFFICE 1635 Foxtrail Drive, Suite 204 Loveland, Colorado 80538 Phone 970-776-4331</p> <p>SHERIDAN OFFICE 1095 Saberton Avenue Sheridan, Wyoming 82801 Phone 307-674-0609</p> <p>609 CONSULTING, LLC</p>	<p>SYNERGY RESOURCES CORPORATION</p> <p>1625 Broadway, Suite 300 Denver, Colorado 80202</p>	<p>SCALE: 1" = 40'</p> <p>DATE SURVEYED: 11/29/16</p> <p>DATE: 1/3/16</p> <p>DRAFTER: CDJ</p> <p>REVISED:</p>	<p>FACILITY LOCATION DRAWING (B)</p> <p>LEFFLER 8-21</p> <p>LOCATED IN SECTION 21, T6N, R66W, 6TH P.M.</p> <p>WELD COUNTY, COLORADO</p>
--	--	--	--	---	---

K:\SYNERGY RESOURCES\2016_120_LEFFLER_T6N_R66W_21\DWG\LEFFLER.dwg, 11/17/2017 10:06:01 AM, stoken

FACILITY LOCATION DRAWING (C)
LEFFLER 8-21
PRODUCTION FACILITY & MISC. EQUIPMENT

# MLVTs	1
# VRUs	3
# Compressors	1
# LACT Units	3
# Combustors	4
# Gas Busters	3
# Treaters	0
# Oil Tanks	8
# Water Tanks	2
# Generators	1
# Meter Runs	0
# Single Separators	12
# Bulk Separators	0
# Two Phase Separators	6
# Automation	0
# Instrument Buildings	1 Instrument Air
# Gas Lift Skids	1
# Pump Jack Units	0
* No existing facility equipment within disturbance area *	

WELLS

Proposed:

LEFFLER 26N-23B-L, LEFFLER 26C-23-L, LEFFLER 1N-23C-L,
LEFFLER 1N-23B-L, LEFFLER 1C-23-L, LEFFLER 41N-23C-L,
LEFFLER 41C-23-L, LEFFLER 8N-23A-L, LEFFLER 8C-23-L,
LEFFLER 8N-23B-L, LEFFLER 8N-23C-L & LEFFLER 40C-23-L

* No existing wells within disturbance area *