



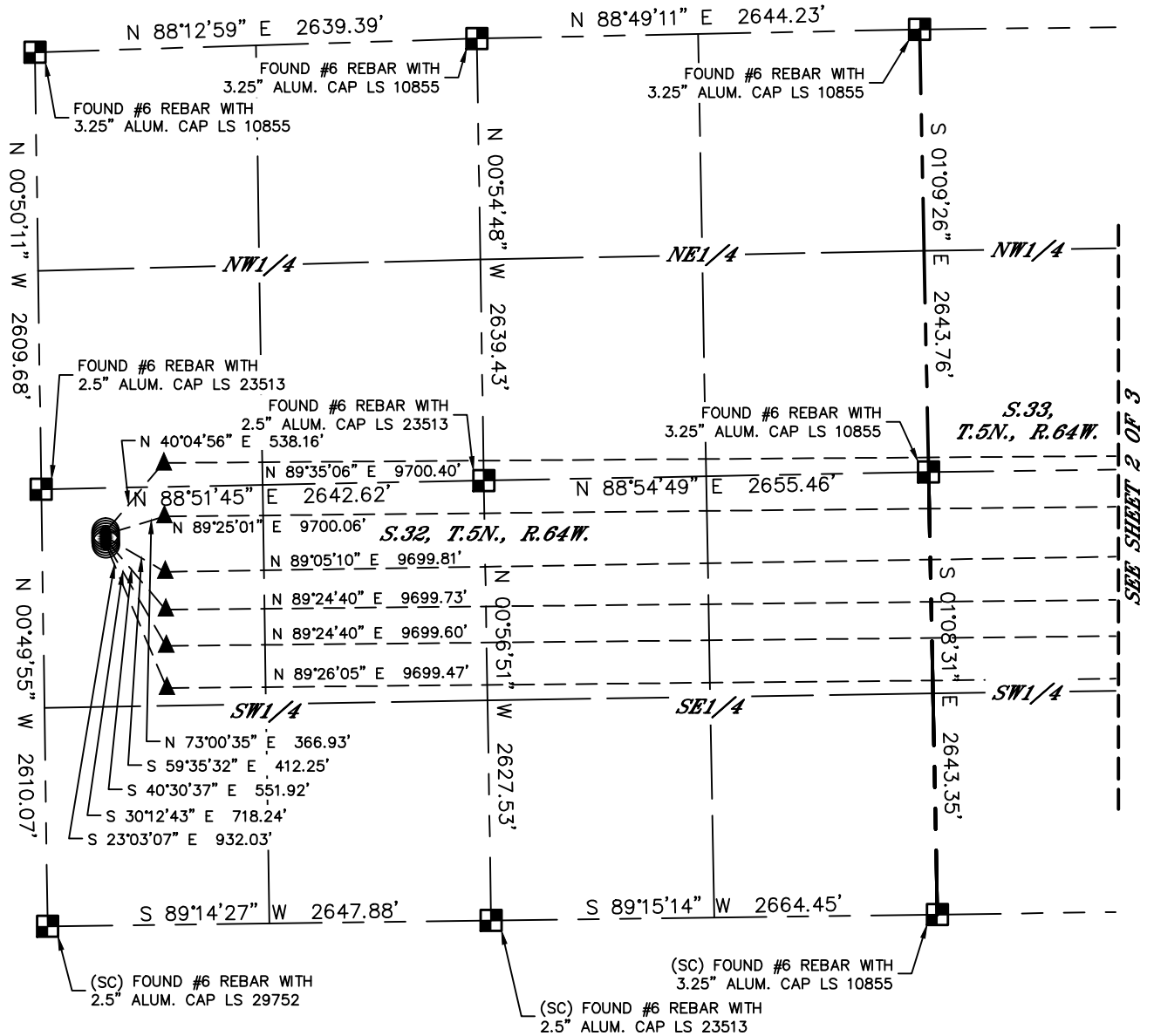
Lat40°, Inc. 6250 W. 10th Street, Unit 2, Greeley, CO 970-515-5294

MULTI-WELL PLAN

BATH-SCH 5N64W32G PAD

THIS MAP DOES NOT REPRESENT A BOUNDARY SURVEY

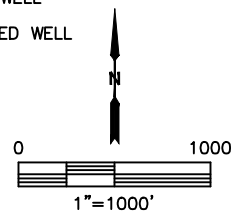
SECTION: 32
TOWNSHIP: 5N
RANGE: 64W
6TH. P.M.
WELD COUNTY, CO



LEGEND

- = ALIQUOT MONUMENT AS DESCRIBED
- = CALCULATED POSITION
- = SURFACE HOLE LOCATION (SHL)
- ▲ = ENTRY POINT LOCATION (EP)
- _{BH} = BOTTOM HOLE LOCATION (BHL)
- ⊙ = EXISTING WELL
- ⊙ = ABANDONED WELL

#	WELL NAME	BHL FOOTAGE				BHL LAT °	BHL LONG °	BHL S-T-R
1	BATH-SCH 32G-432	2575	FNL	150	FEL	40.35597	-104.54569	33-5-64
2	BATH-SCH 32G-202	2410	FSL	150	FEL	40.35517	-104.54569	33-5-64
3	BATH-SCH 32G-332	2135	FSL	150	FEL	40.35441	-104.54569	33-5-64
4	BATH-SCH 32H-212	1854	FSL	150	FEL	40.35364	-104.54568	33-5-64
5	BATH-SCH 32H-312	1638	FSL	150	FEL	40.35305	-104.54568	33-5-64
6	BATH-SCH 32H-202	1382	FSL	150	FEL	40.35235	-104.54568	33-5-64



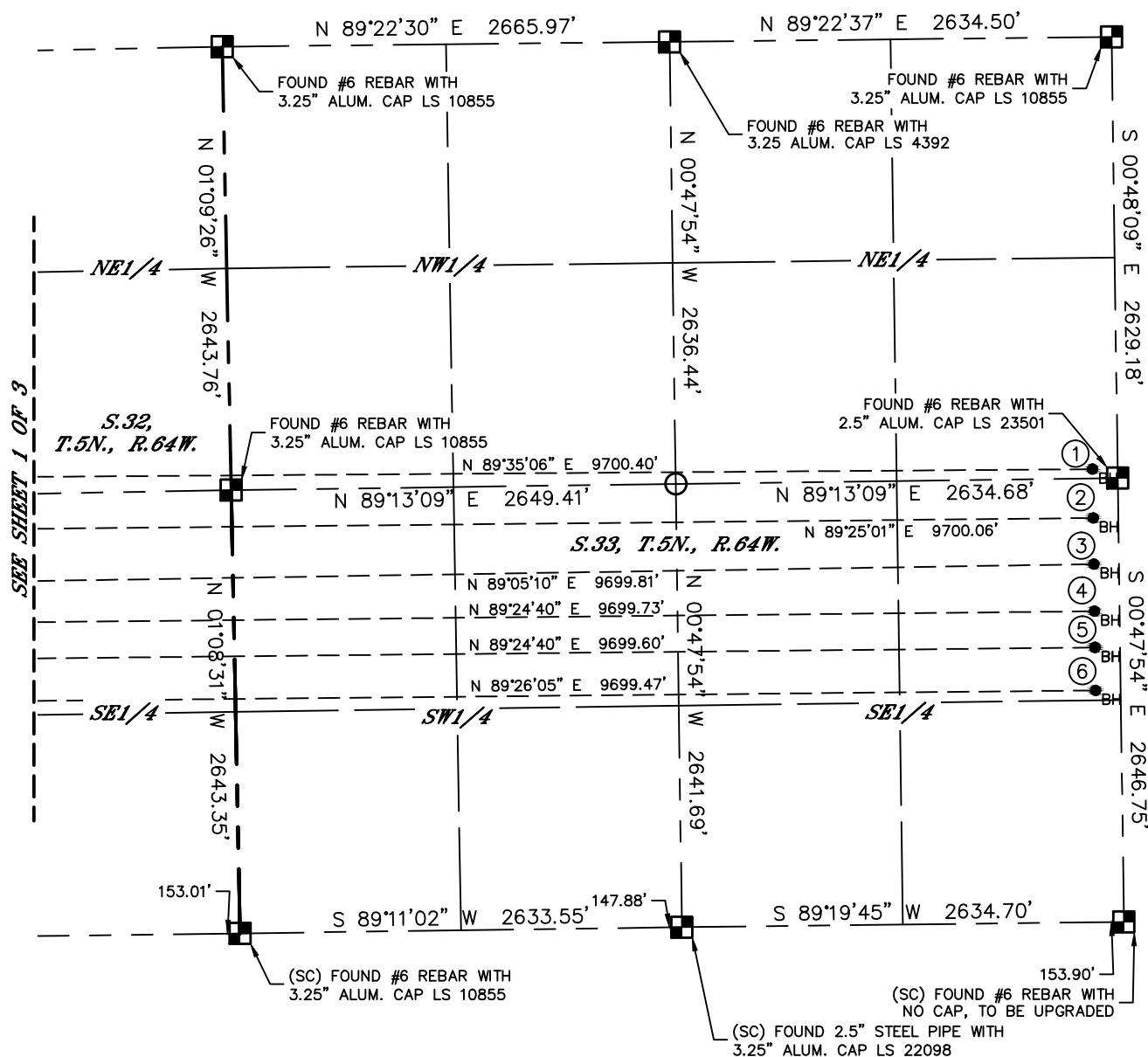
Lat40°, Inc. 6250 W. 10th Street, Unit 2, Greeley, CO 970-515-5294

MULTI-WELL PLAN








BATH-SCH 5N64W32G PAD

THIS MAP DOES NOT REPRESENT A BOUNDARY SURVEY

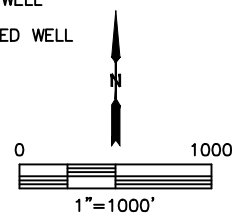
SECTION: 32
TOWNSHIP: 5N
RANGE: 64W
6TH. P.M.
WELD COUNTY, CO



LEGEND

-  = ALIQUOT MONUMENT AS DESCRIBED
 = CALCULATED POSITION
 = SURFACE HOLE LOCATION (SHL)
 = ENTRY POINT LOCATION (EP)
 = BOTTOM HOLE LOCATION (BHL)
 = EXISTING WELL
 = ABANDONED WELL

#	WELL NAME	BHL FOOTAGE				BHL LAT °	BHL LONG °	BHL S-T-R
1	BATH-SCH 32G-432	2575	FNL	150	FEL	40.35597	-104.54569	33-5-64
2	BATH-SCH 32G-202	2410	FSL	150	FEL	40.35517	-104.54569	33-5-64
3	BATH-SCH 32G-332	2135	FSL	150	FEL	40.35441	-104.54569	33-5-64
4	BATH-SCH 32H-212	1854	FSL	150	FEL	40.35364	-104.54568	33-5-64
5	BATH-SCH 32H-312	1638	FSL	150	FEL	40.35305	-104.54568	33-5-64
6	BATH-SCH 32H-202	1382	FSL	150	FEL	40.35235	-104.54568	33-5-64





Lat40°, Inc. 6250 W. 10th Street, Unit 2, Greeley, CO 970-515-5294

MULTI-WELL PLAN

BATH-SCH 5N64W32G PAD

SECTION: 32
TOWNSHIP: 5N
RANGE: 64W
6TH. P.M.
WELD COUNTY, CO

