

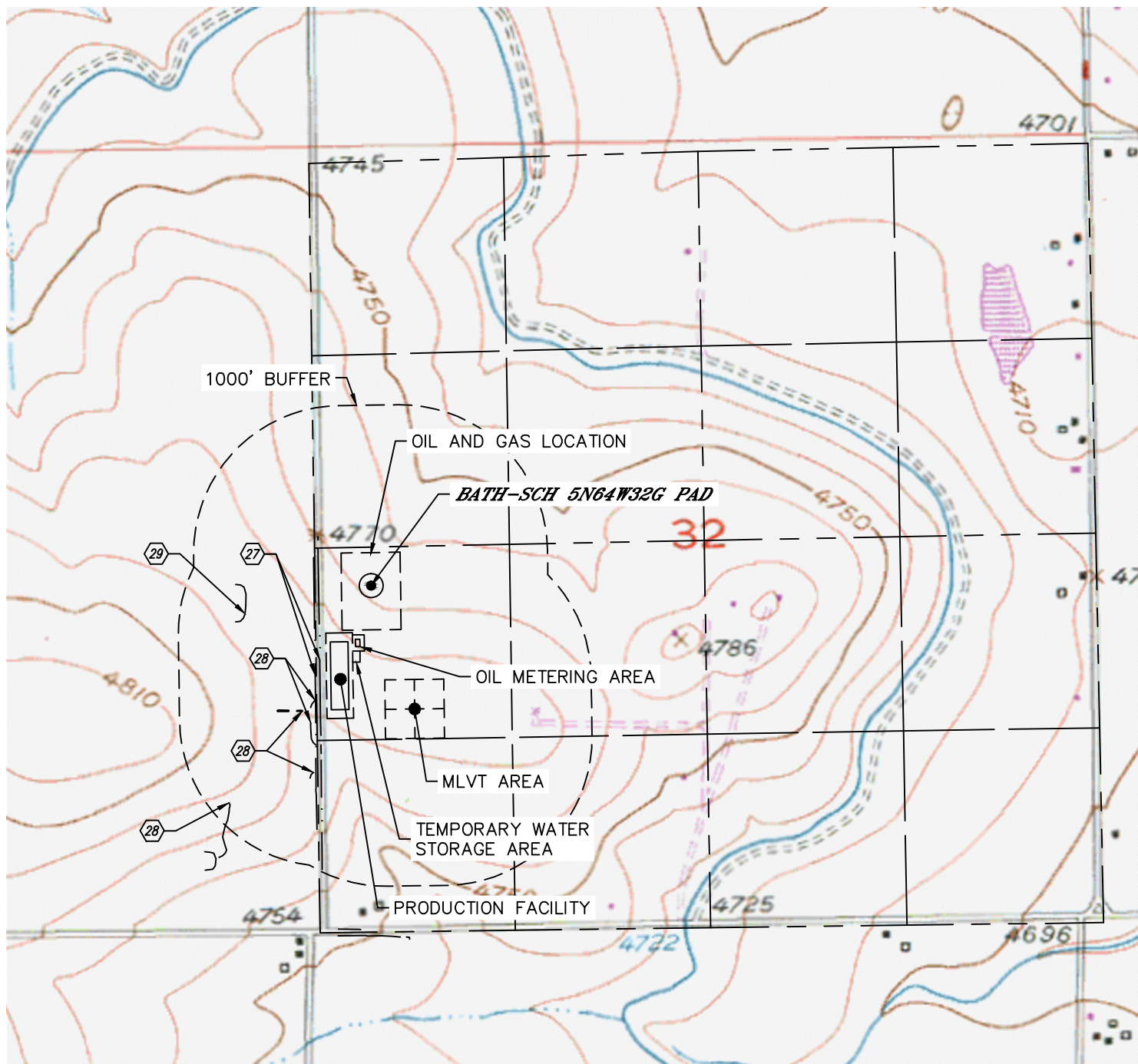


Lat40°, Inc. 6250 W. 10th Street, Unit 2, Greeley, CO 970-515-5294

HYDROLOGY MAP

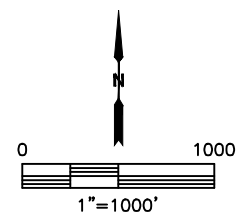
BATH-SCH 5N64W32G PAD

SECTION: 32
TOWNSHIP: 5N
RANGE: 64W
6TH. P.M.
WELD COUNTY, CO



DISTANCES MEASURED FROM THE EDGE OF THE OIL AND GAS LOCATION.

- ②⑦ BORROW DITCH 43' & 76' W
- ②⑧ DITCH 80', 167' & 257' W, 114', 376' & 877' SW
- ②⑨ POND 562' NW



NEAREST DOWN GRADIENT SURFACE WATER: BORROW DITCH 43' W

DATE: 1/10/2017
PROJECT#: 2016101