



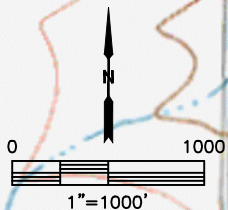
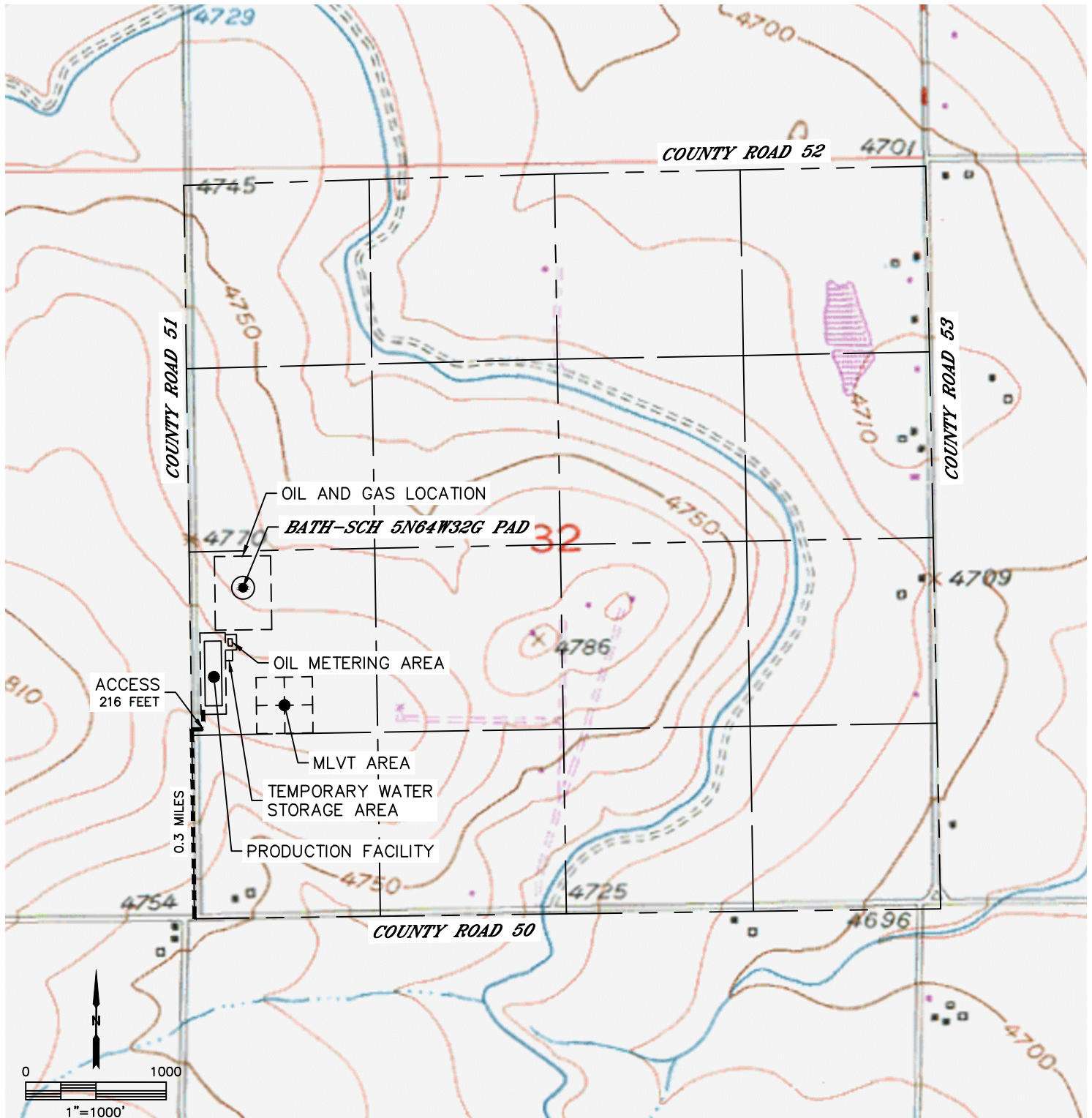
Lat40°, Inc. 6250 W. 10th Street, Unit 2, Greeley, CO 970-515-5294

ACCESS ROAD MAP

BATH-SCH 5N64W32G PAD

SECTION: 32
TOWNSHIP: 5N
RANGE: 64W
6TH. P.M.
WELD COUNTY, CO

DRIVING DIRECTIONS TO BATH-SCH 5N64W32G PAD:
FROM THE INTERSECTION OF COUNTY ROAD 50 AND COUNTY ROAD 51, DRIVE NORTH ON
COUNTY ROAD 51 FOR 0.3 MILES TO A PROPOSED ACCESS, THEN TURN EAST AND DRIVE 216 FEET
TO THE PROPOSED DRILL PAD.





Lat40°, Inc. 6250 W. 10th Street, Unit 2, Greeley, CO 970-515-5294

ACCESS ROAD MAP

BATH-SCH 5N64W32G PAD

SECTION: 32
TOWNSHIP: 5N
RANGE: 64W
6TH. P.M.
WELD COUNTY, CO

