

LEGEND:

○ PROPOSED LOCATION

N

LARAMIE ENERGY, LLC

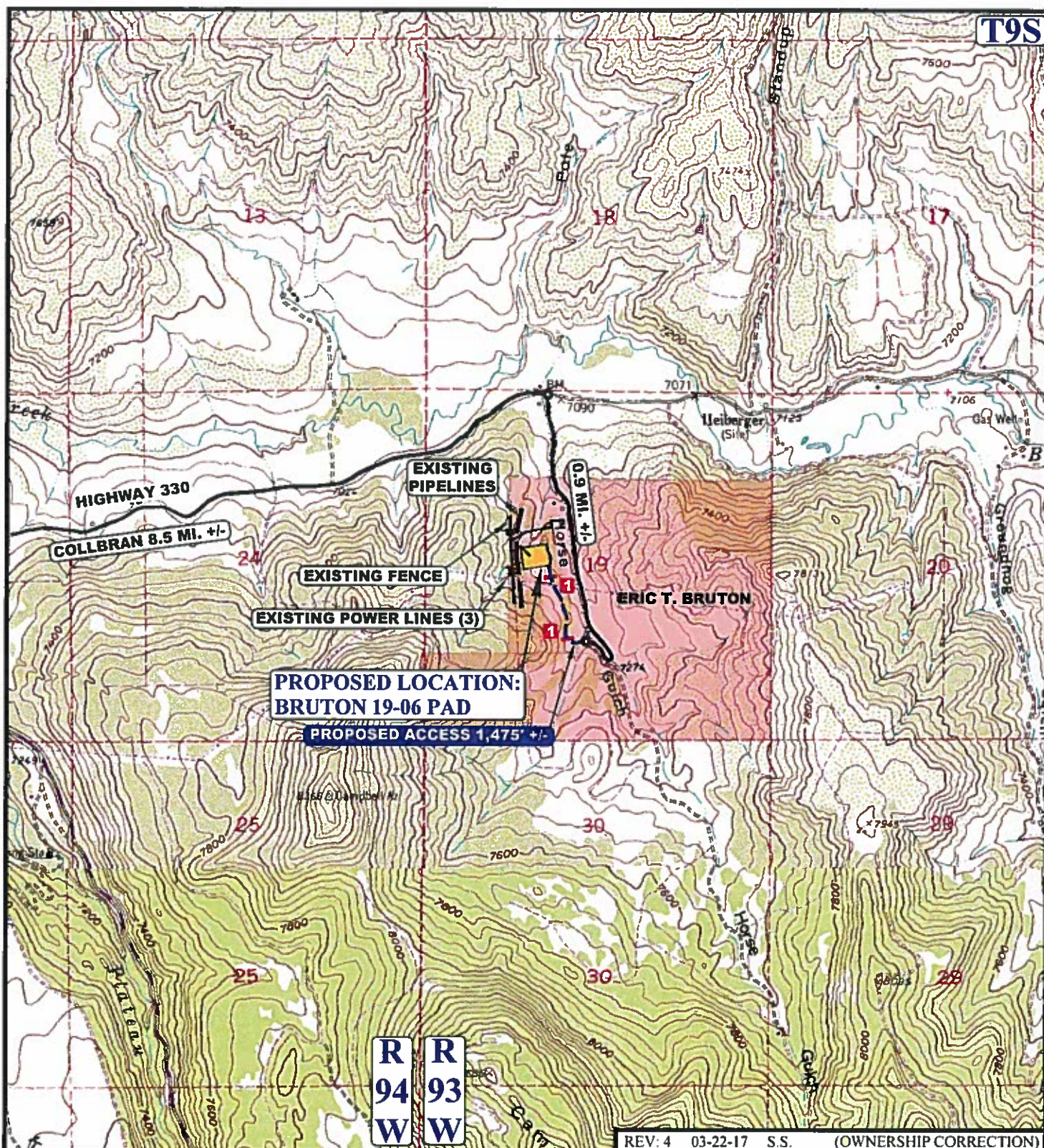
BRUTON 19-06 PAD
SE 1/4 NW 1/4 SECTION 19, T9S, R93W, 6th P.M.
MESA COUNTY, COLORADO



UELS, LLC
Corporate Office • 85 South 200 East
Vernal, UT 84078 • (435) 789-1017

SURVEYED BY	G.M., N.F.	04-01-13	SCALE
DRAWN BY	B.D.	04-24-13	1:100,000
ACCESS ROAD MAP			TOPO A

REV: 2 11-21-16 J.L.G. (WELL PAD MOVE)



NOTE: PARCEL DATA SHOWN HAS BEEN OBTAINED FROM VARIOUS SOURCES AND SHOULD BE USED FOR MAPPING, GRAPHIC AND PLANNING PURPOSES ONLY. NO WARRANTY IS MADE BY UTAH ENGINEERING AND LAND SURVEYING (UELS) FOR ACCURACY OF THE PARCEL DATA.

LEGEND:

- EXISTING ROAD
- - - PROPOSED ROAD
- * - EXISTING FENCE
- - - EXISTING PIPELINE
- - - EXISTING POWER LINE
- 1** 18" CULVERT REQUIRED

LARAMIE ENERGY, LLC

BRUTON 19-06 PAD
SE 1/4 NW 1/4 SECTION 19, T9S, R93W, 6th P.M.
MESA COUNTY, COLORADO

SURVEYED BY	G.M., N.F.	04-01-15	SCALE
DRAWN BY	B.D.	04-28-15	1 : 24,000

ACCESS ROAD MAP

TOPO B



UELS, LLC
 Corporate Office * 85 South 200 East
 Vernal, UT 84078 * (435) 789-1017



PROCEED IN AN EASTERLY DIRECTION FROM COLLBRAN, COLORADO ALONG HIGHWAY 330 APPROXIMATELY 8.5 MILES TO THE JUNCTION OF THIS ROAD AND AN EXISTING ROAD TO THE SOUTH; TURN RIGHT AND PROCEED IN A SOUTHERLY, THEN SOUTHEASTERLY, THEN NORTHWESTERLY DIRECTION APPROXIMATELY 0.9 MILES TO THE BEGINNING OF THE PROPOSED ACCESS ROAD TO THE WEST; FOLLOW ROAD FLAGS IN A WESTERLY, THEN NORTHERLY DIRECTION APPROXIMATELY 1,475' TO THE PROPOSED LOCATION.

TOTAL DISTANCE FROM COLLBRAN, COLORADO TO THE PROPOSED WELL LOCATION IS APPROXIMATELY 9.7 MILES.

REV: 2 11-21-16 J.L.G. (WELL PAD MOVE)

LARAMIE ENERGY, LLC

BRUTON 19-06 PAD
SE 1/4 NW 1/4 SECTION 19, T9S, R93W, 6th P.M.
MESA COUNTY, COLORADO



UELS, LLC
Corporate Office • 85 South 200 East
Vernal, UT 84078 • (435) 789-1017

SURVEYED BY	G.M. N.F.	04-01-13	
DRAWN BY	B.D.	04-23-13	

ROAD DESCRIPTION