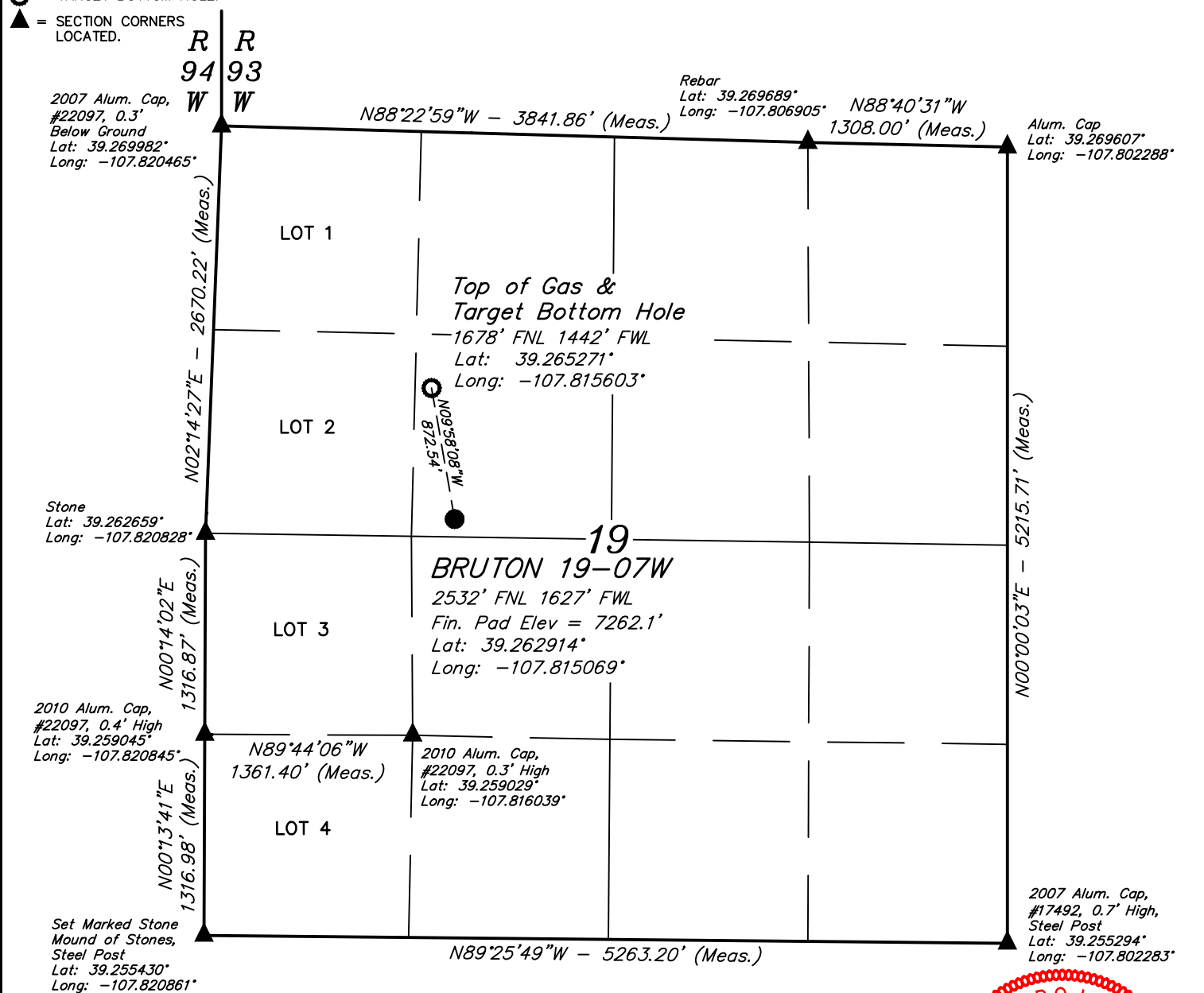


LEGEND:

- = PROPOSED WELLHEAD.
 ○ = TARGET BOTTOM HOLE.
 ▲ = SECTION CORNERS LOCATED.

T9S, R93W, 6th P.M.

**NOTE DISTANCE TO NEAREST:**

BUILDING: N33°E 825'
 BUILDING UNIT: N25°E 874'
 HOBUE: OVER A MILE
 DOAA: OVER A MILE
 PUBLIC ROAD: N33°W 2043'
 ABOVE GROUND UTILITY: S08°W 369'
 RAILROAD: OVER A MILE
 PROPERTY LINE: WEST 278'

PDOP = 1.3

NOTE:

- 1.) All latitudes and longitudes are given in NAD 83 coordinates.
- 2.) Distances to nearest section lines are measured perpendicularly.

**CERTIFICATE**

THIS IS TO CERTIFY THAT THE ABOVE PLAT WAS PREPARED FROM FIELD NOTES OF ACTUAL SURVEYS MADE BY ME OR UNDER MY SUPERVISION AND THAT THE LOCATION HAS BEEN STAKED ON THE GROUND AS SHOWN ON THE PLAT AND THAT THE SAME ARE TRUE AND CORRECT TO THE BEST OF MY KNOWLEDGE AND BELIEF.

REGISTERED LAND SURVEYOR
 REGISTRATION NO. 17180
 STATE OF COLORADO 05-06-17

REV: 1 02-23-17 S.S. (SHL & BHL MOVE)

BASIS OF BEARINGS

BASIS OF BEARINGS IS A G.P.S. OBSERVATION

BASIS OF ELEVATION

BENCH MARK (19 RDS) LOCATED IN THE SE 1/4 OF SECTION 16, T9S, R93W, 6th P.M., TAKEN FROM THE SOUTH MAMM PEAK, QUADRANGLE, COLORADO, 7.5 MINUTE QUAD. (TOPOGRAPHIC MAP) PUBLISHED BY THE UNITED STATES DEPARTMENT OF THE INTERIOR, GEOLOGICAL SURVEY. SAID ELEVATION IS MARKED AS BEING 7252 FEET.

**LARAMIE ENERGY, LLC**

BRUTON FED 19-07W
SE 1/4 NW 1/4, SECTION 19, T9S, R93W, 6th P.M.
MESA COUNTY, COLORADO

SURVEYED BY: CODY RICH	DATE: 11-14-16
DRAWN BY: S.S.	DATE DRAWN: 11-18-16
SCALE: 1" = 1000'	

WELL LOCATION PLAT

UELS, LLC
 Corporate Office * 85 South 200 East
 Vernal, UT 84078 * (435) 789-1017