

T6N, R81W, 6th P.M.

SandRidge Exploration & Production, LLC

Well location, REU 0681 2-23H35 located as shown in the SW1/4NE1/4 of Section 23, T6N, R81W, 6th P.M., Jackson County, Colorado.

BASIS OF BEARINGS:
 US STATE PLANE 1983
 CO NORTH 0501 GRID

BASIS OF ELEVATION

SPOT ELEVATION AT THE NW CORNER OF SECTION 23, T6N, R81W, 6TH PM, TAKEN FROM THE SPICER PEAK QUADRANGLE, USGS 7.5 MIN QUAD (TOPOGRAPHIC MAP) WITH SAID ELEVATION MARKED AS BEING 8313 FEET.

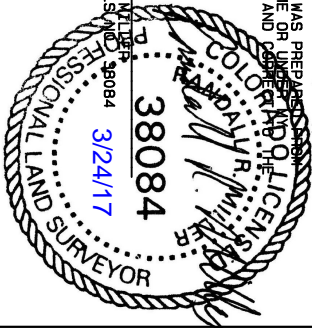
LEGEND

90° SYMBOL
 FOUND CORNER
 PROPOSED WELL
 PROPOSED BHL/LPL

GRAPHIC SCALE 1"=1000'



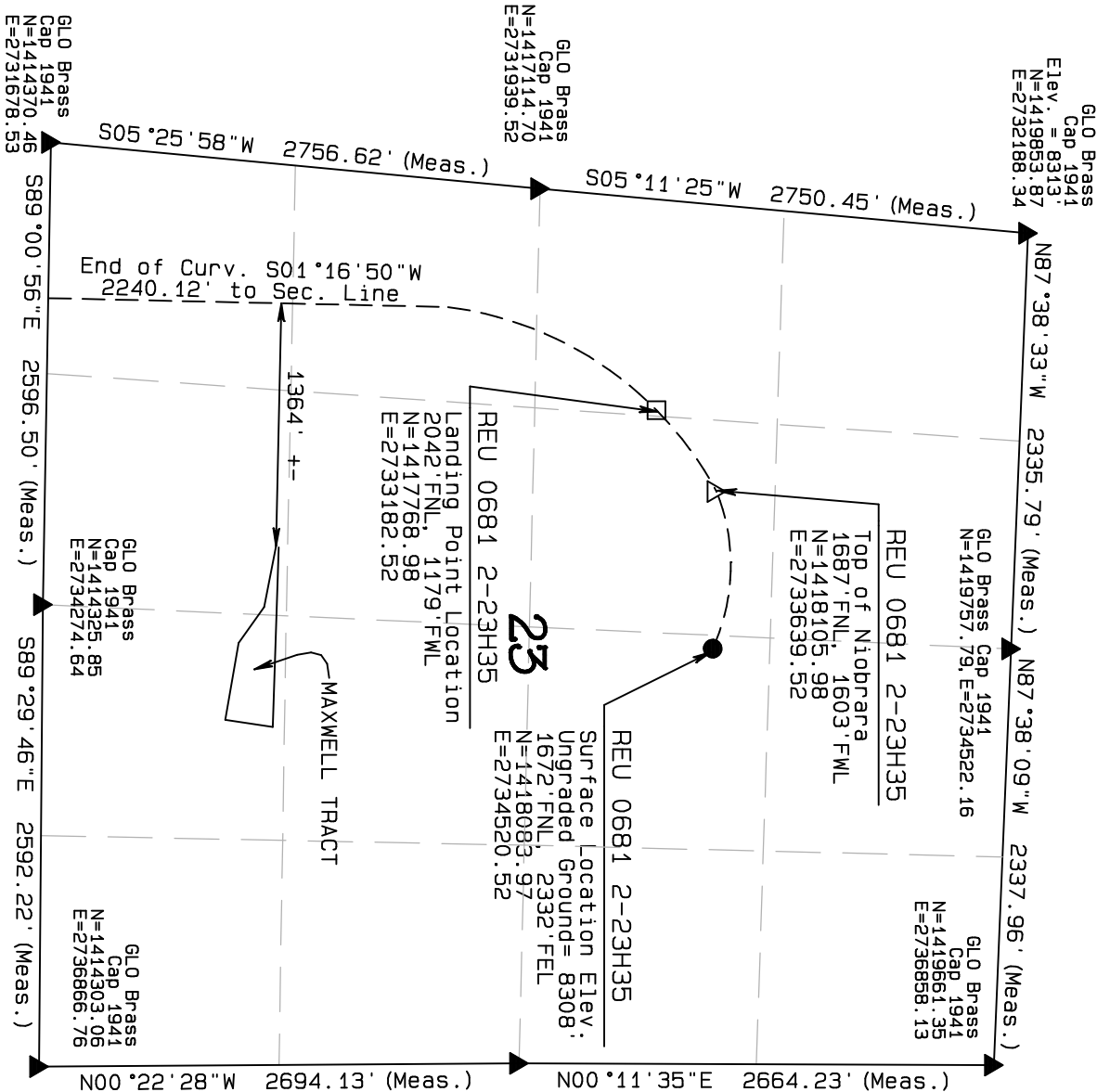
THIS IS TO CERTIFY THAT THE ABOVE PLAT WAS PREPARED BY ME OR UNDER MY CLOSE PERSONAL SUPERVISION AND THAT THE SAID SURVEYING WAS MADE BY ME OR UNDER MY CLOSE PERSONAL SUPERVISION AND THAT THE SAID SURVEYING WAS MADE IN ACCORDANCE WITH THE BEST OF MY KNOWLEDGE AND BELIEF.



NORTH PARK ENGINEERING & CONSULTING, INC.

P.O. BOX 395
 WALDEN, CO 80480
 (970) 723-3725

DATE OF FIELD WORK: MAR 20, 2016 DRAWING COMPLETION: MAR 8, 2017
 SURVEYED BY: ADL DRAWN BY: TKH CHECKED BY: RBM



NAD 83 (TOP OF NIOBRARA) NAD 83 (SURFACE LOCATION)

LATITUDE=40.477155°N LATITUDE=40.477121°N
 LONGITUDE=106.457484°W LONGITUDE=106.454316°W PDOP = 1.422

NAD 83 (LEASE ENTRY) NAD 83 (TARGET BOTTOM HOLE) NAD 83 (LANDING POINT LOCATION)

LATITUDE=40.455768°N LATITUDE=40.437519°N LATITUDE=40.476216°N
 LONGITUDE=106.455768°W LONGITUDE=106.461014°W LONGITUDE=106.459113°W

T6N, R81W, 6th P.M.

SandRidge Exploration & Production, LLC

Intermediate Section, REU 0681 2-23H35
located as shown in the W1/2 of Section 26,
T6N, R81W, 6th P.M., Jackson County, Colorado.

BASIS OF BEARINGS:

US STATE PLANE 1983
CO NORTH 0501 GRID

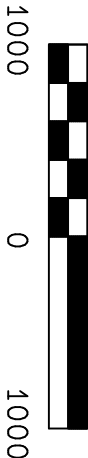
BASIS OF ELEVATION

SPOT ELEVATION AT THE NW CORNER OF SECTION 23,
T6N, R81W, 6TH PM, TAKEN FROM THE SPICER PEAK
QUADRANGLE, USGS 7.5 MIN QUAD (TOPOGRAPHIC MAP)
WITH SAID ELEVATION MARKED AS BEING 8313 FEET.

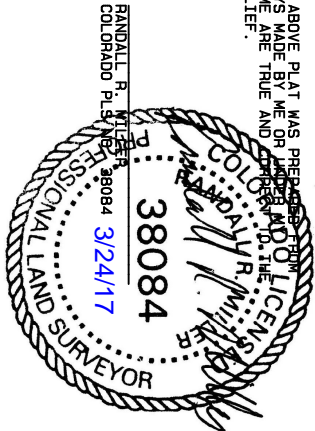
LEGEND

- 90° SYMBOL
- FOUND CORNER
- PROPOSED WELL
- PROPOSED BHL/LPL

GRAPHIC SCALE 1"=1000'



THIS IS TO CERTIFY THAT THE ABOVE PLAT WAS PREPARED BY
THE SURVEYOR OF ACTUAL SURVEYS MADE BY ME OR UNDER MY
SUPERVISION AND THAT THE SAME ARE TRUE AND CORRECT TO THE
BEST OF MY KNOWLEDGE AND BELIEF.



NORTH PARK ENGINEERING &
CONSULTING, INC.

P.O. BOX 395
WALDEN, CO 80480
(970) 723-3725

DATE OF FIELD WORK: MAR 20, 2016 DRAWING COMPLETION: MAR 8, 2017
SURVEYED BY: ADL DRAWN BY: TKH CHECKED BY: RRM

GLO Brass
Cap 1941
N=1414370.46
E=2731678.53

589°00'56"E 2596.50' (Meas.)

589°29'46"E 2592.22' (Meas.)

GLO Brass
Cap 1941
N=1414325.85
E=2734274.64

GLO Brass
Cap 1941
N=1414303.06
E=2736866.76

N02°13'27"E 2701.11' (Meas.)

Sec. Line S01°03'26"W
2694.71' to 1/4 Sec. Line

GLO Brass
Cap 1941
N=1411671.38
E=2731573.69

GLO Brass
Cap 1941
N=1411634.30
E=2736847.40

N02°17'06"E 2666.26' (Meas.)

1/4 Sec. Line S00°41'04"W
2683.18' to Sec. Line

REU 0681 2-23H35
FED LEASE ENTRY POINT
1339' FSL, 967' FWL
N=1410326.60
E=2732501.10

GLO Brass
Cap 1941
N=1408955.81
E=2734149.35

SE COR. S26
N=140871.39
E=2736836.83

N88°54'05"W 2682.46' (Meas.)

S88°12'02"E 2688.80' (Meas.)

W.C. GLO Brass
Cap 1941

GLO Brass
Cap 1941
N=1409007.25
E=2731467.39

NAD 83 (TOP OF NIOBRARA)

LATITUDE=40.477155°N
LONGITUDE=106.457484°W

NAD 83 (SURFACE LOCATION)

LATITUDE=40.477121°N
LONGITUDE=106.454316°W

PDOP = 1.422

NAD 83 (LEASE ENTRY)

LATITUDE=40.455768°N
LONGITUDE=106.455768°W

NAD 83 (TARGET BOTTOM HOLE)

LATITUDE=40.437519°N
LONGITUDE=106.461014°W

NAD 83 (LANDING POINT LOCATION)

LATITUDE=40.476216°N
LONGITUDE=106.459113°W

T6N, R81W, 6th P.M.

GLO BRASS
1941
N=1409007.25
E=2731467.39

NE COR. S35
N=1408871.39
E=2736836.83

GLO BRASS
1941
N=1408955.81
E=2734149.36

GLO BRASS
1941 WC

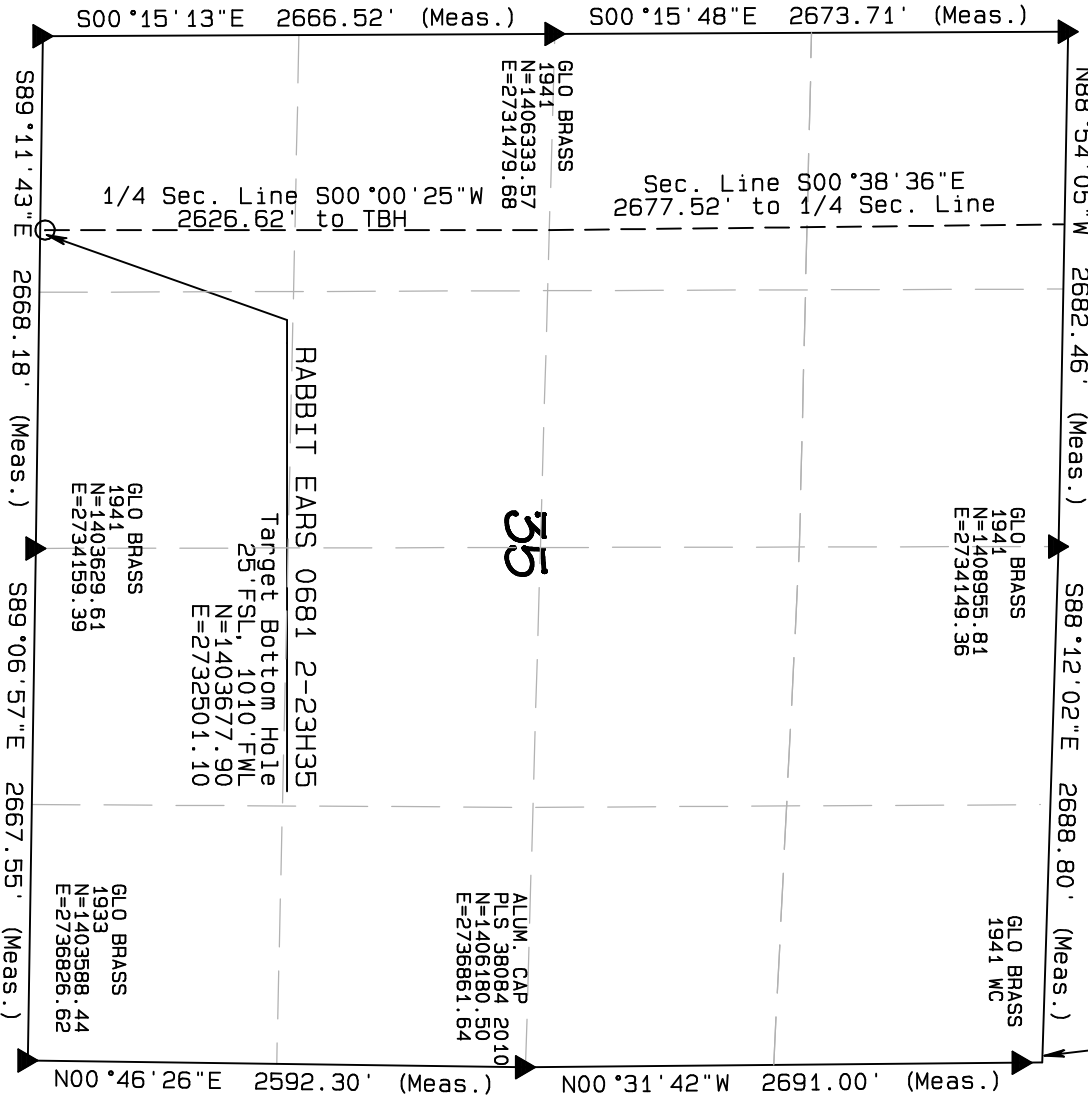
GLO BRASS
1941
N=1406333.57
E=2731479.68

ALUM. CAP
PLS. 38084
2010
N=1406180.50
E=2736861.64

GLO BRASS
1941
N=1403629.61
E=2734159.39

GLO BRASS
1933
N=1403588.44
E=2736826.62

GLO BRASS
1933
N=1403667.07
E=2731491.48



Sandridge Exploration & Production, LLC

Target Bottom Hole, REU 0681 2-23H35
located as shown in the SW1/4SW1/4 of Section 35,
T6N, R81W, 6th P.M., Jackson County, Colorado.

BASIS OF BEARINGS:

US STATE PLANE 1983
CO NORTH 0501 GRID

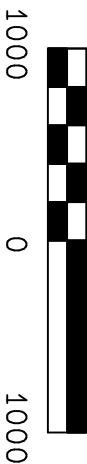
BASIS OF ELEVATION

SPOT ELEVATION AT THE NW CORNER OF SECTION 23,
T6N, R81W, 6TH PM, TAKEN FROM THE SPICER PEAK
QUADRANGLE, USGS 7.5 MIN QUAD (TOPOGRAPHIC MAP)
WITH SAID ELEVATION MARKED AS BEING 8313 FEET.

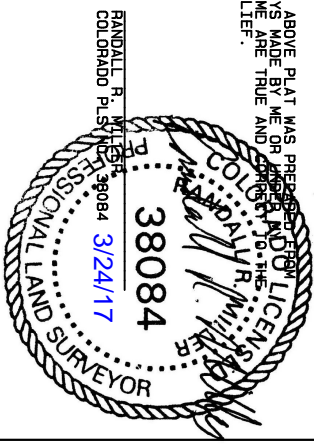
LEGEND

- 90° SYMBOL
- FOUND CORNER
- PROPOSED WELL
- PROPOSED BHL/LPL

GRAPHIC SCALE 1"=1000'



THIS IS TO CERTIFY THAT THE ABOVE PLAT WAS PREPARED FROM
FIELD NOTES ON ACTUAL SURVEYS MADE BY ME OR UNDER MY
SUPERVISION AND THAT THE SAME ARE TRUE AND
BEST OF MY KNOWLEDGE AND BELIEF.



NORTH PARK ENGINEERING &
CONSULTING, INC.

P.O. BOX 395
WALDEN, CO 80480
(970) 723-3725

DATE OF FIELD WORK: MAR 20, 2016 DRAWING COMPLETION: MAR 8, 2017
SURVEYED BY: ADL DRAWN BY: TKH CHECKED BY: RBM

NAD 83 (TOP OF NIOBRARA)

LATITUDE=40.477155°N
LONGITUDE=106.457484°W

PDOP = 1.422

NAD 83 (TARGET BOTTOM HOLE)

LATITUDE=40.437519°N
LONGITUDE=106.461014°W

NAD 83 (LANDING POINT LOCATION)

LATITUDE=40.476216°N
LONGITUDE=106.459113°W

NAD 83 (LEASE ENTRY)

LATITUDE=40.455768°N
LONGITUDE=106.455768°W