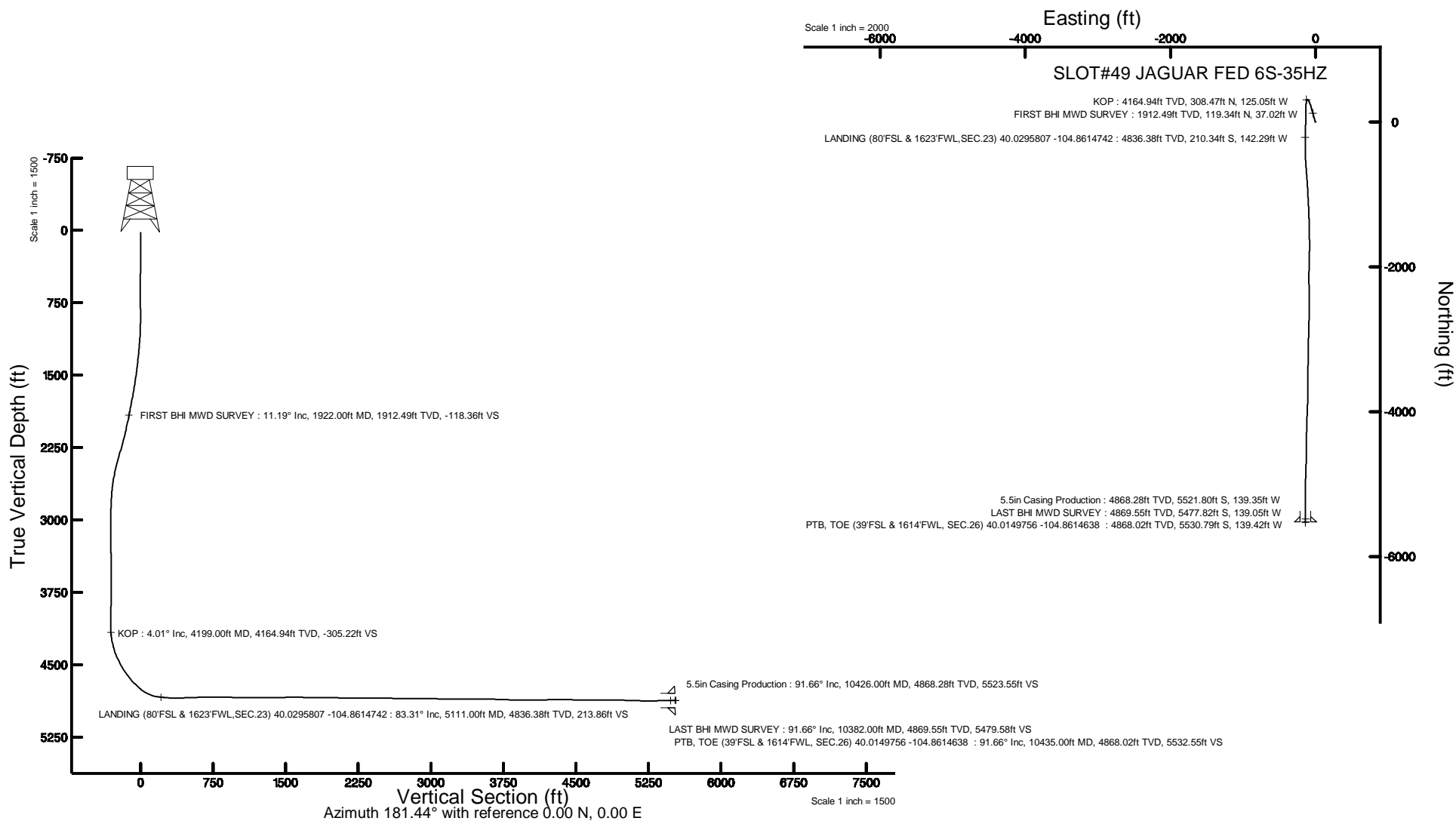


KERR-MCGEE OIL & GAS ONSHORE LP (WA)

Location: COLORADO Slot: SLOT#49 JAGUAR FED 6S-35HZ
Field: WELD COUNTY (UTM/TRUE NORTH) Well: JAGUAR FED 6S-35HZ
Facility: SEC.23-T1N-R67W Wellbore: JAGUAR FED 6S-35HZ AWB

Plot reference wellpath is JAGUAR FED 6S-35HZ AWP	Grid System: NAD83 / UTM Zone 13 North, US feet
True vertical depths are referenced to Rig on SLOT#49 JAGUAR FED 6S-35HZ (RT)	* = Wellpath was transformed from a different geodetic datum
Measured depths are referenced to Rig on SLOT#49 JAGUAR FED 6S-35HZ (RT)	North Reference: True north
Rig on SLOT#49 JAGUAR FED 6S-35HZ (RT) to Mean Sea Level: 5009 feet	Scale: True distance
Mean Sea Level to Mud line (At Slot: SLOT#49 JAGUAR FED 6S-35HZ): 0 feet	Depths are in feet
Coordinates are in feet referenced to Slot	Created by: pairsntr on 2017-03-10
	Database: WellArchitectDB

Location Information					
Facility Name		Grid East (US R)	Grid North (US R)	Latitude	Longitude
SEC.23-T1N-R67W		1682113.860	14537751.930	40°01'48.587"N	104°51'03.750"W
Slot	Local N (R)	Local E (R)	Grid East (US R)	Grid North (US R)	Latitude
SLOT#49 JAGUAR FED 6S-35HZ	-1.64	-2778.87	1679336.111	14537745.642	40°01'48.589"N
Rig on SLOT#49 JAGUAR FED 6S-35HZ (RT) to Mud line (At Slot: SLOT#49 JAGUAR FED 6S-35HZ)			5009R		
Mean Sea Level to Mud line (At Slot: SLOT#49 JAGUAR FED 6S-35HZ)			0R		
Rig on SLOT#49 JAGUAR FED 6S-35HZ (RT) to Mean Sea Level			5009R		



REFERENCE WELLPATH IDENTIFICATION			
Operator	KERR-MCGEE OIL & GAS ONSHORE LP (WA)	Slot	SLOT#49 JAGUAR FED 6S-35HZ
Area	COLORADO	Well	JAGUAR FED 6S-35HZ
Field	WELD COUNTY (UTM/TRUE NORTH)	Wellbore	JAGUAR FED 6S-35HZ AWB
Facility	SEC.23-T1N-R67W		

REPORT SETUP INFORMATION			
Projection System	NAD83 / UTM Zone 13 North, US feet	Software System	WellArchitect® 5.0
North Reference	True	User	Painsetr
Scale	0.999602	Report Generated	3/10/2017 at 11:53 AM
Convergence at slot	0.09° East	Database/Source file	WellArchitectDB/JAGUAR_FED_6S-35HZ_AWP.xml

WELLPATH LOCATION						
	Local coordinates		Grid coordinates		Geographic coordinates	
	North[ft]	East[ft]	Easting[US ft]	Northing[US ft]	Latitude	Longitude
Slot Location	-1.64	-2778.87	1679336.11	14537745.64	40°01'48.569"N	104°51'39.478"W
Facility Reference Pt			1682113.86	14537751.93	40°01'48.587"N	104°51'03.755"W
Field Reference Pt			1698235.31	14552047.82	40°04'09.600"N	104°47'36.000"W

WELLPATH DATUM			
Calculation method	Minimum curvature	Rig on SLOT#49 JAGUAR FED 6S-35HZ (RT) to Facility Vertical Datum	5009.00ft
Horizontal Reference Pt	Slot	Rig on SLOT#49 JAGUAR FED 6S-35HZ (RT) to Mean Sea Level	5009.00ft
Vertical Reference Pt	Rig on SLOT#49 JAGUAR FED 6S-35HZ (RT)	Rig on SLOT#49 JAGUAR FED 6S-35HZ (RT) to Mud Line at Slot (SLOT#49 JAGUAR FED 6S-35HZ)	5009.00ft
MD Reference Pt	Rig on SLOT#49 JAGUAR FED 6S-35HZ (RT)	Section Origin	N 0.00, E 0.00 ft
Field Vertical Reference	Mean Sea Level	Section Azimuth	181.44°

REFERENCE WELLPATH IDENTIFICATION			
Operator	KERR-MCGEE OIL & GAS ONSHORE LP (WA)	Slot	SLOT#49 JAGUAR FED 6S-35HZ
Area	COLORADO	Well	JAGUAR FED 6S-35HZ
Field	WELD COUNTY (UTM/TRUE NORTH)	Wellbore	JAGUAR FED 6S-35HZ AWB
Facility	SEC.23-T1N-R67W		

WELLPATH DATA (120 stations) † = interpolated/extrapolated station												
MD [ft]	Inclination [°]	Azimuth [°]	TVD [ft]	Vert Sect [ft]	North [ft]	East [ft]	Grid East [US ft]	Grid North [US ft]	Latitude	Longitude	DLS [°/100ft]	Comments
0.00†	0.000	266.080	0.00	0.00	0.00	0.00	1679336.11	14537745.64	40°01'48.569"N	104°51'39.478"W	0.00	
17.00	0.000	266.080	17.00	0.00	0.00	0.00	1679336.11	14537745.64	40°01'48.569"N	104°51'39.478"W	0.00	
219.00	0.420	266.080	219.00	0.07	-0.05	-0.74	1679335.37	14537745.59	40°01'48.568"N	104°51'39.487"W	0.21	
312.00	0.230	344.540	312.00	-0.08	0.11	-1.13	1679334.98	14537745.75	40°01'48.570"N	104°51'39.493"W	0.47	
405.00	0.480	277.320	405.00	-0.30	0.34	-1.56	1679334.55	14537745.98	40°01'48.572"N	104°51'39.498"W	0.48	
497.00	0.640	293.590	496.99	-0.53	0.59	-2.42	1679333.69	14537746.23	40°01'48.575"N	104°51'39.509"W	0.24	
590.00	0.170	194.770	589.99	-0.59	0.66	-2.93	1679333.18	14537746.30	40°01'48.576"N	104°51'39.516"W	0.74	
682.00	0.170	255.220	681.99	-0.42	0.50	-3.10	1679333.02	14537746.14	40°01'48.574"N	104°51'39.518"W	0.19	
775.00	0.070	73.030	774.99	-0.40	0.48	-3.17	1679332.94	14537746.12	40°01'48.574"N	104°51'39.519"W	0.26	
867.00	0.380	181.010	866.99	-0.11	0.19	-3.13	1679332.99	14537745.83	40°01'48.571"N	104°51'39.518"W	0.44	
960.00	0.740	329.320	959.99	-0.31	0.40	-3.44	1679332.67	14537746.04	40°01'48.573"N	104°51'39.522"W	1.16	
1052.00	2.810	337.690	1051.94	-2.88	3.00	-4.60	1679331.51	14537748.63	40°01'48.599"N	104°51'39.537"W	2.26	
1145.00	4.200	343.990	1144.76	-8.22	8.38	-6.40	1679329.70	14537754.01	40°01'48.652"N	104°51'39.560"W	1.55	
1239.00	5.610	346.880	1238.41	-15.95	16.16	-8.39	1679327.69	14537761.79	40°01'48.729"N	104°51'39.586"W	1.52	
1333.00	6.320	348.240	1331.90	-25.43	25.70	-10.49	1679325.58	14537771.32	40°01'48.823"N	104°51'39.613"W	0.77	
1427.00	7.240	347.040	1425.25	-36.20	36.54	-12.88	1679323.18	14537782.15	40°01'48.930"N	104°51'39.644"W	0.99	
1521.00	8.060	343.350	1518.41	-48.21	48.63	-16.09	1679319.95	14537794.22	40°01'49.050"N	104°51'39.685"W	1.02	
1616.00	9.620	341.890	1612.28	-62.02	62.55	-20.47	1679315.55	14537808.14	40°01'49.187"N	104°51'39.741"W	1.66	
1709.00	11.340	342.900	1703.72	-78.01	78.68	-25.57	1679310.43	14537824.25	40°01'49.347"N	104°51'39.807"W	1.86	
1804.00	11.480	344.750	1796.85	-95.92	96.73	-30.81	1679305.17	14537842.28	40°01'49.525"N	104°51'39.874"W	0.41	
1826.00	11.680	344.080	1818.40	-100.14	100.98	-31.99	1679303.97	14537846.53	40°01'49.567"N	104°51'39.889"W	1.10	
1922.00	11.190	345.290	1912.49	-118.36	119.34	-37.02	1679298.92	14537864.87	40°01'49.748"N	104°51'39.954"W	0.57	FIRST BHI MWD SURVEY
2011.00	12.450	345.400	1999.60	-135.88	136.97	-41.63	1679294.28	14537882.49	40°01'49.923"N	104°51'40.013"W	1.42	
2100.00	13.810	343.530	2086.28	-155.21	156.44	-47.06	1679288.82	14537901.95	40°01'50.115"N	104°51'40.083"W	1.60	
2189.00	14.420	346.360	2172.59	-176.02	177.40	-52.69	1679283.17	14537922.89	40°01'50.322"N	104°51'40.155"W	1.03	
2279.00	17.100	345.180	2259.20	-199.54	201.09	-58.72	1679277.10	14537946.56	40°01'50.556"N	104°51'40.233"W	3.00	
2367.00	16.880	341.300	2343.36	-223.96	225.70	-66.12	1679269.66	14537971.14	40°01'50.799"N	104°51'40.328"W	1.31	
2456.00	15.700	337.510	2428.79	-247.10	249.06	-74.87	1679260.88	14537994.49	40°01'51.030"N	104°51'40.441"W	1.78	
2545.00	12.880	337.470	2515.03	-267.17	269.36	-83.28	1679252.44	14538014.76	40°01'51.231"N	104°51'40.549"W	3.17	
2635.00	10.170	331.480	2603.21	-283.22	285.61	-90.92	1679244.78	14538030.99	40°01'51.391"N	104°51'40.647"W	3.29	

REFERENCE WELLPATH IDENTIFICATION			
Operator	KERR-MCGEE OIL & GAS ONSHORE LP (WA)	Slot	SLOT#49 JAGUAR FED 6S-35HZ
Area	COLORADO	Well	JAGUAR FED 6S-35HZ
Field	WELD COUNTY (UTM/TRUE NORTH)	Wellbore	JAGUAR FED 6S-35HZ AWB
Facility	SEC.23-T1N-R67W		

WELLPATH DATA (120 stations) † = interpolated/extrapolated station												
MD (ft)	Inclination (°)	Azimuth (°)	TVD (ft)	Vert Sect (ft)	North (ft)	East (ft)	Grid East (US ft)	Grid North (US ft)	Latitude	Longitude	DLS (°/100ft)	Comments
2724.00	6.140	324.320	2691.29	-293.83	296.38	-97.45	1679238.24	14538041.75	40°01'51.498"N	104°51'40.731"W	4.66	
2814.00	3.260	334.610	2780.98	-299.95	302.60	-101.36	1679234.32	14538047.97	40°01'51.559"N	104°51'40.781"W	3.32	
2903.00	3.020	339.040	2869.85	-304.38	307.08	-103.28	1679232.39	14538052.44	40°01'51.604"N	104°51'40.806"W	0.38	
3015.00	3.210	269.140	2981.72	-306.98	309.79	-107.47	1679228.20	14538055.14	40°01'51.630"N	104°51'40.860"W	3.19	
3105.00	2.800	261.030	3071.59	-306.48	309.41	-112.16	1679223.51	14538054.75	40°01'51.627"N	104°51'40.920"W	0.66	
3194.00	2.740	262.440	3160.49	-305.76	308.79	-116.42	1679219.26	14538054.13	40°01'51.621"N	104°51'40.975"W	0.10	
3283.00	2.500	264.430	3249.40	-305.19	308.32	-120.46	1679215.22	14538053.65	40°01'51.616"N	104°51'41.027"W	0.29	
3372.00	2.180	269.440	3338.32	-304.89	308.12	-124.08	1679211.60	14538053.44	40°01'51.614"N	104°51'41.073"W	0.43	
3461.00	1.000	123.770	3427.30	-304.42	307.67	-125.13	1679210.55	14538052.99	40°01'51.609"N	104°51'41.087"W	3.44	
3550.00	1.510	99.080	3516.28	-303.84	307.05	-123.33	1679212.35	14538052.38	40°01'51.603"N	104°51'41.063"W	0.82	
3639.00	1.650	89.110	3605.25	-303.74	306.88	-120.89	1679214.79	14538052.22	40°01'51.602"N	104°51'41.032"W	0.35	
3728.00	1.610	89.050	3694.21	-303.85	306.93	-118.36	1679217.32	14538052.26	40°01'51.602"N	104°51'41.000"W	0.04	
3817.00	1.470	90.560	3783.18	-303.92	306.94	-115.97	1679219.71	14538052.27	40°01'51.602"N	104°51'40.969"W	0.16	
3905.00	1.570	297.380	3871.17	-304.46	307.48	-115.91	1679219.77	14538052.82	40°01'51.608"N	104°51'40.968"W	3.36	
3994.00	2.650	313.260	3960.11	-306.37	309.45	-118.49	1679217.19	14538054.78	40°01'51.627"N	104°51'41.001"W	1.37	
4083.00	2.160	275.820	4049.04	-307.87	311.03	-121.66	1679214.02	14538056.36	40°01'51.643"N	104°51'41.042"W	1.81	
4171.00	2.270	218.410	4136.98	-306.60	309.83	-124.39	1679211.29	14538055.16	40°01'51.631"N	104°51'41.077"W	2.42	
4199.00†	4.011	198.993	4164.94	-305.22	308.47	-125.05	1679210.63	14538053.79	40°01'51.617"N	104°51'41.086"W	7.20	KOP
4260.00	8.250	187.470	4225.58	-298.83	302.11	-126.32	1679209.37	14538047.44	40°01'51.555"N	104°51'41.102"W	7.20	
4349.00	14.530	184.720	4312.78	-281.32	284.64	-128.07	1679207.65	14538029.96	40°01'51.382"N	104°51'41.124"W	7.08	
4437.00	22.500	183.580	4396.16	-253.43	256.78	-130.03	1679205.73	14538002.12	40°01'51.107"N	104°51'41.150"W	9.07	
4526.00	27.440	181.220	4476.82	-215.88	219.26	-131.53	1679204.29	14537964.61	40°01'50.736"N	104°51'41.169"W	5.66	
4615.00	32.700	181.720	4553.81	-171.30	174.70	-132.69	1679203.20	14537920.06	40°01'50.295"N	104°51'41.184"W	5.92	
4704.00	37.260	179.650	4626.72	-120.30	123.70	-133.25	1679202.72	14537869.08	40°01'49.791"N	104°51'41.191"W	5.29	
4792.00	44.640	180.720	4693.14	-62.68	66.07	-133.47	1679202.59	14537811.47	40°01'49.222"N	104°51'41.194"W	8.42	
4881.00	51.040	182.220	4752.85	3.25	0.15	-135.21	1679200.96	14537745.58	40°01'48.571"N	104°51'41.216"W	7.30	
4969.00	64.140	182.650	4799.91	77.37	-73.91	-138.38	1679197.90	14537671.55	40°01'47.839"N	104°51'41.257"W	14.89	
5058.00	78.780	181.350	4828.13	161.52	-158.01	-141.27	1679195.14	14537587.48	40°01'47.008"N	104°51'41.294"W	16.51	
5111.00†	83.312	180.870	4836.38	213.86	-210.34	-142.29	1679194.21	14537535.17	40°01'46.490"N	104°51'41.307"W	8.60	LANDING (80°FSL & 1623°FWL, SEC.23) 40.0295807 -104.8614742
5147.00	86.390	180.550	4839.61	249.71	-246.19	-142.73	1679193.82	14537499.33	40°01'46.136"N	104°51'41.313"W	8.60	

REFERENCE WELLPATH IDENTIFICATION

Operator	KERR-MCGEE OIL & GAS ONSHORE LP (WA)	Slot	SLOT#49 JAGUAR FED 6S-35HZ
Area	COLORADO	Well	JAGUAR FED 6S-35HZ
Field	WELD COUNTY (UTM/TRUE NORTH)	Wellbore	JAGUAR FED 6S-35HZ AWB
Facility	SEC.23-T1N-R67W		

WELLPATH DATA (120 stations)

MD [ft]	Inclination [°]	Azimuth [°]	TVD [ft]	Vert Sect [ft]	North [ft]	East [ft]	Grid East [US ft]	Grid North [US ft]	Latitude	Longitude	DLS [°/100ft]	Comments
5235.00	88.270	179.250	4843.71	337.57	-334.09	-142.58	1679194.11	14537411.47	40°01'45.267"N	104°51'41.311"W	2.60	
5324.00	92.430	178.630	4843.17	426.47	-423.05	-140.93	1679195.90	14537322.54	40°01'44.388"N	104°51'41.290"W	4.73	
5413.00	92.220	177.180	4839.55	515.22	-511.91	-137.68	1679199.29	14537233.72	40°01'43.510"N	104°51'41.248"W	1.64	
5501.00	91.050	176.070	4837.04	602.87	-599.72	-132.50	1679204.60	14537145.95	40°01'42.642"N	104°51'41.181"W	1.83	
5590.00	91.260	175.400	4835.25	691.41	-688.46	-125.88	1679211.35	14537057.26	40°01'41.765"N	104°51'41.096"W	0.79	
5679.00	90.620	175.230	4833.79	779.89	-777.15	-118.61	1679218.76	14536968.62	40°01'40.889"N	104°51'41.003"W	0.74	
5768.00	88.150	176.550	4834.74	868.46	-865.90	-112.24	1679225.27	14536879.91	40°01'40.012"N	104°51'40.921"W	3.15	
5856.00	88.490	177.730	4837.32	956.17	-953.76	-107.85	1679229.79	14536792.10	40°01'39.144"N	104°51'40.864"W	1.39	
5949.00	90.340	176.940	4838.27	1048.92	-1046.65	-103.52	1679234.26	14536699.26	40°01'38.226"N	104°51'40.809"W	2.16	
6041.00	89.350	176.210	4838.52	1140.59	-1138.48	-98.03	1679239.90	14536607.47	40°01'37.318"N	104°51'40.738"W	1.34	
6134.00	89.510	177.930	4839.45	1233.31	-1231.35	-93.27	1679244.79	14536514.64	40°01'36.400"N	104°51'40.677"W	1.86	
6226.00	91.230	178.400	4838.85	1325.15	-1323.30	-90.33	1679247.88	14536422.74	40°01'35.492"N	104°51'40.639"W	1.94	
6319.00	89.910	178.210	4837.93	1418.01	-1416.25	-87.58	1679250.78	14536329.83	40°01'34.573"N	104°51'40.604"W	1.43	
6408.00	91.230	179.670	4837.04	1506.91	-1505.23	-85.93	1679252.56	14536240.89	40°01'33.694"N	104°51'40.583"W	2.21	
6497.00	90.250	178.190	4835.89	1595.82	-1594.20	-84.27	1679254.36	14536151.95	40°01'32.815"N	104°51'40.561"W	1.99	
6586.00	88.000	179.870	4837.25	1684.72	-1683.17	-82.76	1679256.01	14536063.02	40°01'31.935"N	104°51'40.542"W	3.15	
6675.00	88.670	181.110	4839.84	1773.67	-1772.12	-83.52	1679255.38	14535974.10	40°01'31.056"N	104°51'40.552"W	1.58	
6764.00	90.650	181.530	4840.37	1862.66	-1861.09	-85.57	1679253.47	14535885.16	40°01'30.177"N	104°51'40.578"W	2.27	
6853.00	89.050	180.880	4840.60	1951.65	-1950.07	-87.45	1679251.74	14535796.22	40°01'29.298"N	104°51'40.602"W	1.94	
6942.00	89.110	181.830	4842.03	2040.64	-2039.03	-89.55	1679249.78	14535707.29	40°01'28.419"N	104°51'40.629"W	1.07	
7031.00	90.060	180.350	4842.67	2129.63	-2128.01	-91.24	1679248.22	14535618.34	40°01'27.539"N	104°51'40.651"W	1.98	
7120.00	88.710	179.160	4843.63	2218.59	-2217.00	-90.86	1679248.74	14535529.39	40°01'26.660"N	104°51'40.646"W	2.02	
7209.00	90.550	178.670	4844.20	2307.49	-2305.98	-89.18	1679250.57	14535440.45	40°01'25.781"N	104°51'40.624"W	2.14	
7298.00	89.850	180.650	4843.89	2396.45	-2394.97	-88.65	1679251.23	14535351.49	40°01'24.901"N	104°51'40.618"W	2.36	
7387.00	88.890	180.070	4844.87	2485.42	-2483.96	-89.21	1679250.81	14535262.54	40°01'24.022"N	104°51'40.625"W	1.26	
7476.00	88.830	180.020	4846.64	2574.38	-2572.95	-89.28	1679250.88	14535173.59	40°01'23.142"N	104°51'40.626"W	0.09	
7565.00	90.090	180.230	4847.48	2663.35	-2661.94	-89.47	1679250.83	14535084.63	40°01'22.263"N	104°51'40.628"W	1.44	
7654.00	88.650	181.190	4848.46	2752.33	-2750.92	-90.58	1679249.86	14534995.68	40°01'21.384"N	104°51'40.642"W	1.94	
7743.00	89.110	182.130	4850.20	2841.31	-2839.87	-93.15	1679247.43	14534906.77	40°01'20.505"N	104°51'40.675"W	1.18	
7832.00	90.310	181.190	4850.65	2930.31	-2928.83	-95.73	1679244.99	14534817.84	40°01'19.626"N	104°51'40.709"W	1.71	

REFERENCE WELLPATH IDENTIFICATION			
Operator	KERR-MCGEE OIL & GAS ONSHORE LP (WA)	Slot	SLOT#49 JAGUAR FED 6S-35HZ
Area	COLORADO	Well	JAGUAR FED 6S-35HZ
Field	WELD COUNTY (UTM/TRUE NORTH)	Wellbore	JAGUAR FED 6S-35HZ AWB
Facility	SEC.23-T1N-R67W		

WELLPATH DATA (120 stations)												
MD [ft]	Inclination [°]	Azimuth [°]	TVD [ft]	Vert Sect [ft]	North [ft]	East [ft]	Grid East [US ft]	Grid North [US ft]	Latitude	Longitude	DLS [°/100ft]	Comments
7921.00	88.920	181.040	4851.25	3019.30	-3017.81	-97.46	1679243.40	14534728.89	40°01'18.746"N	104°51'40.731"W	1.57	
8010.00	89.140	181.130	4852.75	3108.29	-3106.78	-99.15	1679241.85	14534639.96	40°01'17.867"N	104°51'40.752"W	0.27	
8099.00	89.570	181.450	4853.76	3197.28	-3195.75	-101.15	1679239.99	14534551.02	40°01'16.988"N	104°51'40.778"W	0.60	
8188.00	89.450	180.670	4854.52	3286.28	-3284.73	-102.80	1679238.48	14534462.07	40°01'16.108"N	104°51'40.799"W	0.89	
8277.00	89.600	180.510	4855.26	3375.26	-3373.72	-103.71	1679237.70	14534373.11	40°01'15.229"N	104°51'40.811"W	0.25	
8366.00	89.850	180.500	4855.68	3464.25	-3462.72	-104.50	1679237.06	14534284.15	40°01'14.349"N	104°51'40.821"W	0.28	
8455.00	90.150	180.040	4855.68	3553.23	-3551.72	-104.92	1679236.78	14534195.19	40°01'13.470"N	104°51'40.827"W	0.62	
8544.00	88.580	178.920	4856.67	3642.17	-3640.70	-104.11	1679237.72	14534106.24	40°01'12.591"N	104°51'40.816"W	2.17	
8633.00	87.470	181.070	4859.74	3731.08	-3729.64	-104.10	1679237.87	14534017.33	40°01'11.712"N	104°51'40.816"W	2.72	
8722.00	88.640	182.430	4862.76	3820.03	-3818.55	-106.82	1679235.29	14533928.46	40°01'10.833"N	104°51'40.851"W	2.02	
8811.00	89.630	182.300	4864.10	3909.00	-3907.46	-110.49	1679231.76	14533839.58	40°01'09.954"N	104°51'40.898"W	1.12	
8900.00	90.890	182.020	4863.70	3997.99	-3996.39	-113.85	1679228.55	14533750.67	40°01'09.076"N	104°51'40.941"W	1.45	
8989.00	90.030	182.770	4862.98	4086.98	-4085.31	-117.56	1679224.97	14533661.79	40°01'08.197"N	104°51'40.989"W	1.28	
9078.00	90.650	181.780	4862.45	4175.96	-4174.24	-121.10	1679221.57	14533572.89	40°01'07.318"N	104°51'41.034"W	1.31	
9167.00	89.780	181.040	4862.12	4264.96	-4263.21	-123.29	1679219.52	14533483.95	40°01'06.439"N	104°51'41.063"W	1.28	
9256.00	90.800	180.940	4861.67	4353.96	-4352.19	-124.82	1679218.13	14533395.00	40°01'05.559"N	104°51'41.082"W	1.15	
9345.00	89.010	179.880	4861.82	4442.94	-4441.19	-125.46	1679217.63	14533306.04	40°01'04.680"N	104°51'41.091"W	2.34	
9434.00	89.820	180.330	4862.73	4531.91	-4530.18	-125.62	1679217.60	14533217.08	40°01'03.800"N	104°51'41.093"W	1.04	
9523.00	88.890	181.530	4863.73	4620.90	-4619.16	-127.07	1679216.30	14533128.14	40°01'02.921"N	104°51'41.111"W	1.71	
9612.00	90.060	181.870	4864.54	4709.89	-4708.12	-129.71	1679213.80	14533039.21	40°01'02.042"N	104°51'41.145"W	1.37	
9701.00	88.490	182.080	4865.67	4798.88	-4797.05	-132.78	1679210.87	14532950.31	40°01'01.163"N	104°51'41.185"W	1.78	
9790.00	90.250	181.850	4866.65	4887.86	-4885.99	-135.83	1679207.96	14532861.40	40°01'00.284"N	104°51'41.224"W	1.99	
9879.00	89.410	180.600	4866.91	4976.86	-4974.97	-137.73	1679206.20	14532772.46	40°00'59.405"N	104°51'41.248"W	1.69	
9968.00	87.870	180.790	4869.02	5065.82	-5063.93	-138.81	1679205.26	14532683.52	40°00'58.526"N	104°51'41.262"W	1.74	
10057.00	88.340	180.570	4871.97	5154.77	-5152.88	-139.87	1679204.34	14532594.61	40°00'57.647"N	104°51'41.276"W	0.58	
10146.00	89.660	179.620	4873.52	5243.73	-5241.86	-140.01	1679204.33	14532505.67	40°00'56.767"N	104°51'41.278"W	1.83	
10235.00	91.880	179.850	4872.33	5332.67	-5330.85	-139.60	1679204.88	14532416.72	40°00'55.888"N	104°51'41.272"W	2.51	
10324.00	90.370	179.500	4870.58	5421.61	-5419.83	-139.10	1679205.53	14532327.77	40°00'55.009"N	104°51'41.266"W	1.74	
10382.00	91.660	180.400	4869.55	5479.58	-5477.82	-139.05	1679205.67	14532269.81	40°00'54.436"N	104°51'41.265"W	2.71	LAST BHI MWD SURVEY
10435.00	91.660	180.400	4868.02	5532.55	-5530.79	-139.42	1679205.38	14532216.85	40°00'53.912"N	104°51'41.270"W	0.00	PTB, TOE (39°FSL & 1614°FWL, SEC.26) 40.0149756 -104.8614638

HOLE & CASING SECTIONS - Ref Wellbore: JAGUAR FED 6S-35HZ AWB Ref Wellpath: JAGUAR FED 6S-35HZ AWP									
String/Diameter	Start MD [ft]	End MD [ft]	Interval [ft]	Start TVD [ft]	End TVD [ft]	Start N/S [ft]	Start E/W [ft]	End N/S [ft]	End E/W [ft]
5.5in Casing Production	17.00	10426.00	10409.00	17.00	4868.28	0.00	0.00	-5521.80	-139.35

WELLPATH COMPOSITION - Ref Wellbore: JAGUAR FED 6S-35HZ AWB Ref Wellpath: JAGUAR FED 6S-35HZ AWP			
Start MD [ft]	End MD [ft]	Positional Uncertainty Model	Wellbore
17.00	1826.00	ISCWSA MWD, Rev. 2 (Standard)	APC MWD Surface <219 - 1826>
1826.00	10382.00	Custom APC ISCWSA REV 2 MWD+IFR1+SC (approximation)	BHI MWD Surveys <1922 - 10382>
10382.00	10435.00	Blind Drilling (std)	Projection to bit

REFERENCE WELLPATH IDENTIFICATION			
Operator	KERR-MCGEE OIL & GAS ONSHORE LP (WA)	Slot	SLOT#49 JAGUAR FED 6S-35HZ
Area	COLORADO	Well	JAGUAR FED 6S-35HZ
Field	WELD COUNTY (UTM/TRUE NORTH)	Wellbore	JAGUAR FED 6S-35HZ AWB
Facility	SEC.23-T1N-R67W		

WELLPATH COMMENTS				
MD [ft]	Inclination [°]	Azimuth [°]	TVD [ft]	Comment
1922.00	11.190	345.290	1912.49	FIRST BHI MWD SURVEY
4199.00	4.011	198.993	4164.94	KOP
5111.00	83.312	180.870	4836.38	LANDING (80°FSL & 1623'FWL, SEC.23) 40.0295807 -104.8614742
10382.00	91.660	180.400	4869.55	LAST BHI MWD SURVEY
10435.00	91.660	180.400	4868.02	PTB, TOE (39°FSL & 1614'FWL, SEC.26) 40.0149756 -104.8614638