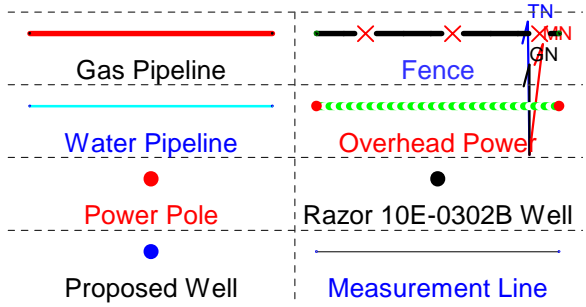
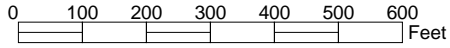


Whiting Oil & Gas Corporation

Razor 10E Pad Location Drawing
SWNW Section 10, T10N-R58W
Weld County, Colorado

Scale 1" = 300'

Prepared by: H&B Petroleum Consultants



Distance Table	
L1	575' @ 305d
L2	136' @ 0d
L3	101' @ 0d
L4	135' @ 90d
L5	190' @ 90d
L6	370' @ 180d
L7	280' @ 180d
L8	350' @ 180d
L9	591' @ 270d
L10	651' @ 270d
L11	630' @ 270d
L12	487' @ 270d

