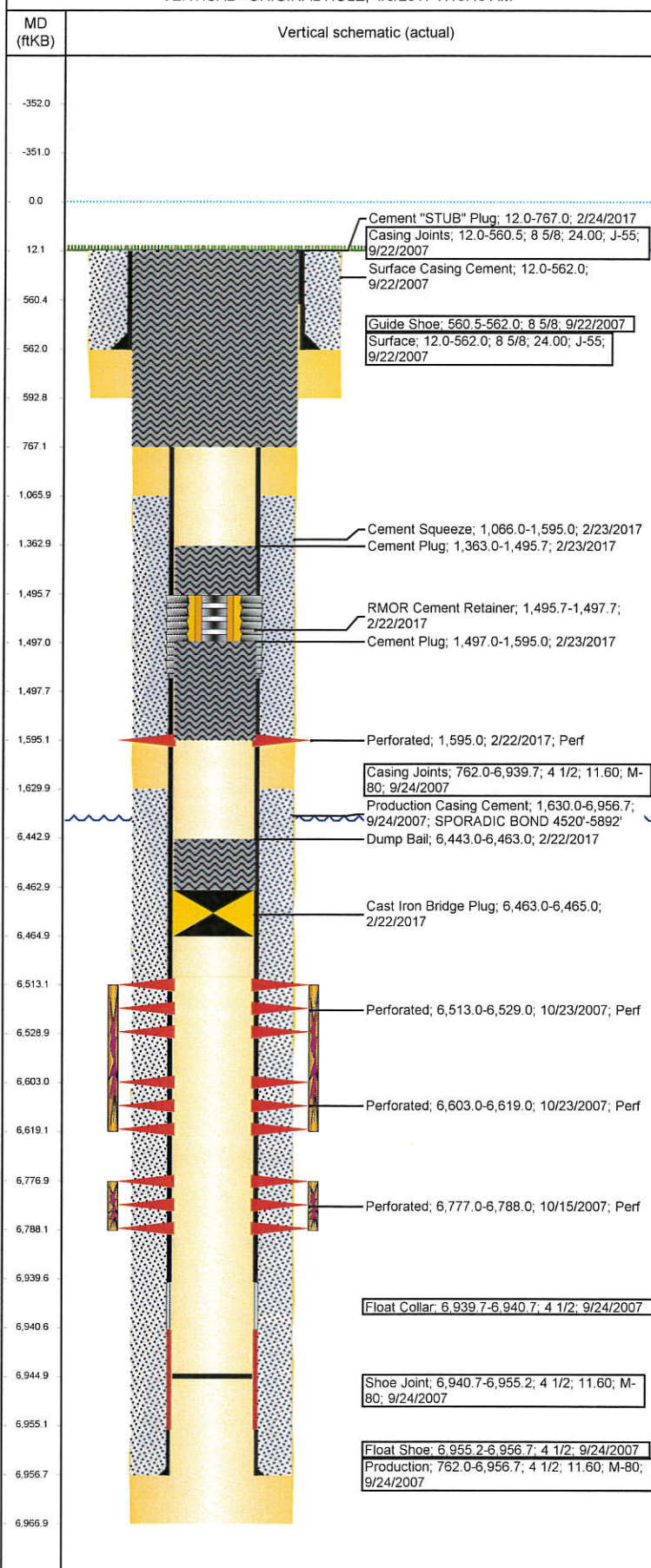


# Wellbore Schematic Input Report

Well Name: **WELLS RANCH USX BB03-04**

VERTICAL - ORIGINAL HOLE, 4/6/2017 7:13:49 AM



## Well Header

API 05-123-26318	Business Unit DJ BASIN	District 15	Well Config VERTICAL
Original KB Elevation (ft) 4,792	KB - GL / MSL (ftKB) 12.00	Spud Date 9/21/2007	P & A Date 2/24/2017

Comment

Directions To Well

WCR 67 & WCR 68, E 0.2, S TO COW CAMP, SW 0.5, S 0.1 INTO LOCATION

## Congressional Location

Quarter 3 NW	Quarter 4 NW	Section 3	Township 5	Twnshp N/S Dir N	Range 63	Range E/W Dir W
-----------------	-----------------	--------------	---------------	---------------------	-------------	--------------------

## Bottom Hole Location

North-South Distance (ft)	From N or S Line	East-West Distance (ft)	From E or W Line
---------------------------	------------------	-------------------------	------------------

## Plug Back Total Depths

Date	Depth (ftKB)	Method	Com
9/24/2007	6,939.7	CASING TALLY	TOP OF FLOAT COLLAR
10/8/2007	6,920.0	CASED HOLE LOG	DEPTH LOGGER ON CBL
1/31/2008	6,921.0	TAG	DRILLED CIFTF AND PUSHED DOWN TO 6921'
4/17/2012	6,945.0	TAG	C/O DN 223JT ALL IN

## Wellbore Sections

Section Des	Size (in)	Act Top, MD (ftKB)	Act Btm, MD (ftKB)
SURFACE	12 1/4	12	593
PRODUCTION	7 7/8	593	6,967

## Zone Statuses

Zone Name	Status Date	Status	Fluid Type	Job	Prod Method
CODELL	10/25/2007	PR	Water	DRILLING/CO...	Flowing
CODELL	2/11/2010	PR			
CODELL	2/14/2013	PR			
CODELL	2/22/2017	P&A		PLUG AND AB...	
NIOBRARA	10/25/2007	PR	Water	DRILLING/CO...	Flowing
NIOBRARA	2/11/2010	PR			
NIOBRARA	2/22/2017	P&A		PLUG AND AB...	

## Casing Strings

### Surface, 562.0ftKB

Casing Description	Run Date	OD (in)	Wt/Len (L...)	Grade	Top, MD (ft...)	MD (ftKB)
Surface	9/22/2007	8 5/8	24.00	J-55	12.0	562.0

### Production, 6,956.7ftKB

Casing Description	Run Date	OD (in)	Wt/Len (L...)	Grade	Top, MD (ft...)	MD (ftKB)
Production	9/24/2007	4 1/2	11.60	M-80	12.0	6,956.7

## Cement

Description	Top Depth (ftKB)	Bottom Depth (ftKB)
Surface Casing Cement	12.0	562.0
Production Casing Cement	1,630.0	6,956.7
Dump Bail	6,443.0	6,463.0
Cement Squeeze	1,066.0	1,595.0
Cement Plug	1,497.0	1,595.0
Cement Plug	1,363.0	1,495.7
Cement "STUB" Plug	12.0	767.0

## Tubing Strings

Tubing Description	Run Date	String...	ID (in)	Wt (lb/ft)	Grade	Len (ft)	Set De...
Tubing - Production	1/31/2008	2 3/8	2.00	4.70	J-55	6,753.59	
Tubing - Production	4/18/2012	2 3/8	2.00	4.70	J-55	6,746.89	

## Other In Hole

Run Date	Des	OD (in)	Top (ftKB)	Btm (ftKB)
2/22/2017	Cast Iron Bridge Plug	3.99	6,463.0	6,465.0
2/22/2017	RMOR Cement Retainer	3.99	1,495.7	1,497.7

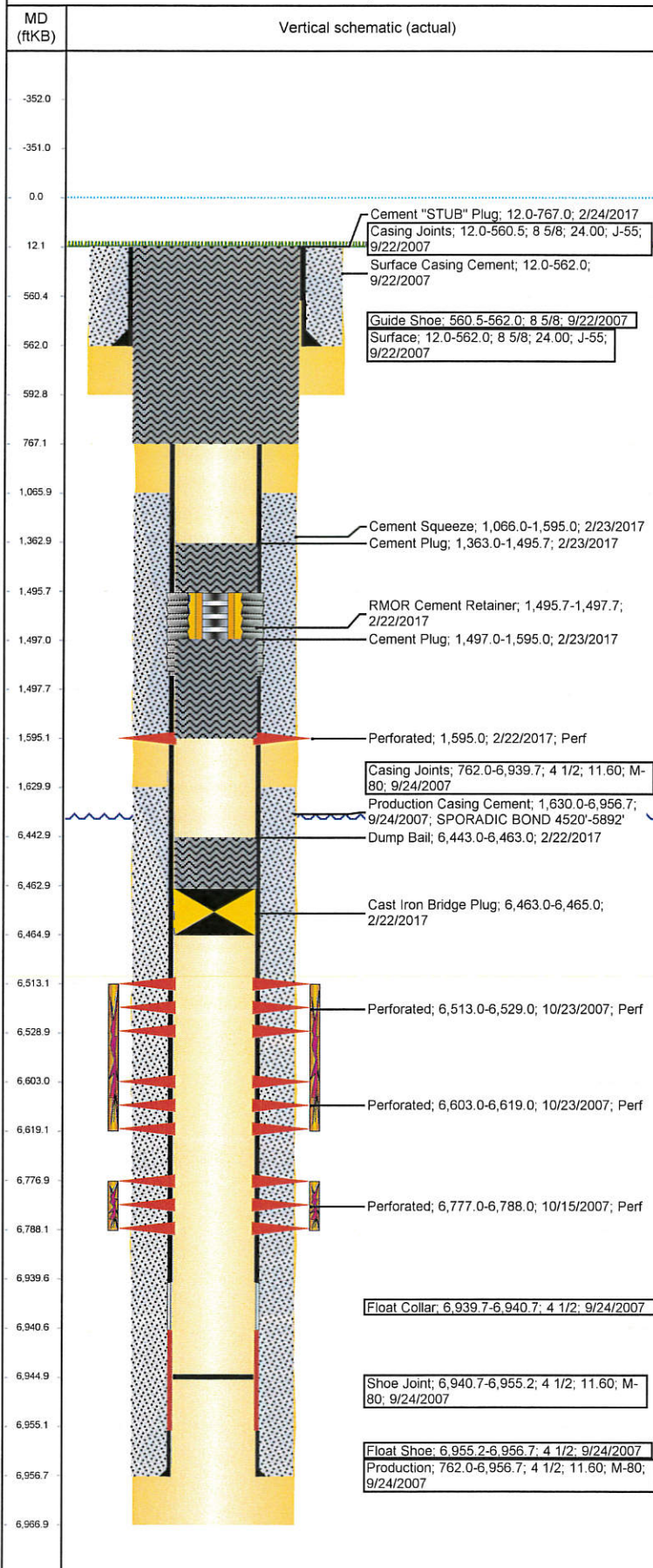
## Logs

Date	Type	Top, MD (ftKB)	Btm, MD (ftKB)
9/24/2007	COMPENSATED DENSITY	2,590.0	6,947.0



Well Name: **WELLS RANCH USX BB03-04**

VERTICAL - ORIGINAL HOLE, 4/6/2017 7:13:49 AM



## Logs

Date	Type	Top, MD (ftKB)	Btm, MD (ftKB)
9/24/2007	INDUCTION	562.0	6,967.0
10/8/2007	CBL/CCL/GR	1,520.0	6,713.0
5/8/2015	GYRO	10.0	6,700.0

## Perforation Data

Linked Zone	Bnch/St g	Sum of Entered Shot Total	Top (ftKB)	Btm (ftKB)	Date
NIOBRARA, ORIGINAL HOLE	A	4	1,595.00	1,595.00	2/22/2017
NIOBRARA, ORIGINAL HOLE	B	64	6,513.00	6,529.00	10/23/2007
CODELL, ORIGINAL HOLE		64	6,603.00	6,619.00	10/23/2007
		44	6,777.00	6,788.00	10/15/2007
<b>Total (Sum)</b>		<b>176</b>			

## Stimulation Intervals

Start Date 10/23/2007	Primary Job Type DRILLING/COMPLETION - ORIGINAL	
Technical Result	Tech Result Details	Tech Result Note
Comment		
Start Date 10/23/2007	Primary Job Type DRILLING/COMPLETION - ORIGINAL	
Technical Result	Tech Result Details	Tech Result Note
Comment		