



PIONEER

Pioneer Energy Services

**CEMENT BOND LOG
WITH GAMMA RAY**

Company **KERR MCGEE OIL & GAS ONSHORE**

Well **ACKERSON DORIS B 1**

Field **WATTENBERG**

County **WELD** State **CO**

Location: API # : 05-123-08300

SHL: 1650' FNL 1650' FEL
SWNE

SEC 11 TWP 1N RGE 67W

NONE

Other Services

Permanent Datum GL
Log Measured From KB 10' Elevation 4969'
Drilling Measured From KB Above Perm. Datum
K.B. 4979'
D.F. 4978'
G.L. 4969'

Comp. KERR MCGEE OIL & GAS ONSHORE
Well ACKERSON DORIS B 1
Field WATTENBERG
Co. WELD
State CO

Date of Service

1 MAR 2017

Run Number

1

Depth Driller or PBTD

8170'

Depth Logger

1500'

Bottom Log Interval

1500'

Top Log Interval

SURFACE

Open Hole Size

12.25"

Type Fluid

WBM

Fluid Level

SURFACE

Fluid Density

N/A

Max. Recorded Temperature

74 F

Max. Wellhead Pressure

0 PSI

Wellhead Connection

N/A

Estimated Cement Top

SEE LOG

Unit Number

P-129

Wireline Size

9/32"

Location

FT. MORGAN

Recorded By

S. STUMP

Witnessed By

L. MORALES

Size

Wt/Ft

Top

Bottom

8.63"

24#

0'

209'

5.5"

17#

0'

8170'

Production Casing

17#

0'

8170'

Liner Record

<<< Fold Here >>>

All interpretations are opinions based on inferences from electrical or other measurements and Pioneer Wireline Services, LLC cannot and does not guarantee the accuracy or correctness of any interpretation, and Pioneer Wireline Services, LLC will not be liable or responsible for any loss, costs, damages, or expenses incurred or sustained by anyone resulting from any interpretation made by any of our officers, agents or employees.

Comments

N/A DENOTES NOT AVAILABLE OR NON-APPLICABLE.

0 PSI ON WELL WHILE LOGGING

S.O. 2-260345

NO FREE PIPE PASS

THANK YOU FOR USING PIONEER ENERGY SERVICES!

Your Pioneer Energy Services Crew

Engineer: S. STUMP
Operator: M. GARCIA
Operator: J. GOFF
Operator:

Tool Data - Services

SCBL
GR/CCL

Serial Number

141166
FW1212-24

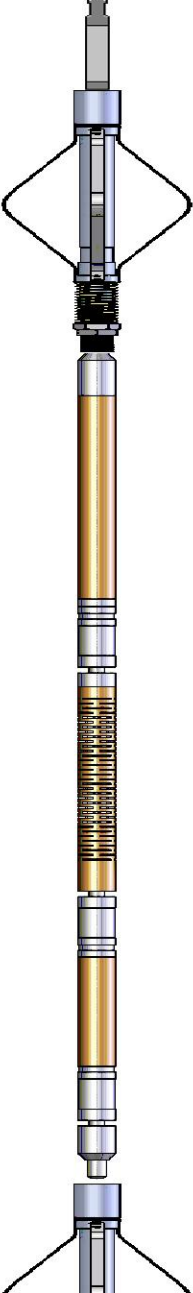

Top - Bottom

BHTEMP_Src	BOREID	BOTTEMP	CASEOD	CASETHCK	CASEWGHT	MAXAMPL	MINAMPL
TEMP	in 8.63	degF 130	in 5.5	in 0	lb/ft 17	mV 0	mV 1
MINATTN	PERFS	PPT	SRFTEMP	TDEPTH			
db/ft 0.08	0	usec 0	degF 0	ft 0			


Variable Description

BHTEMP_Src : BHTEMP Input Source Selector
BOREID : Borehole I.D.
BOTTEMP : Bottom Hole Temperature
CASEOD : Casing O.D.
CASETHCK : Casing Thickness
CASEWGHT : Casing Weight
MAXAMPL : Maximum Amplitude

MINAMPL : Minimum Amplitude
MINATTN : Minimum Attenuation
PERFS : Perforation Flag
PPT : Predicted Pipe Time
SRFTEMP : Surface Temperature
TDEPTH : Total Depth

Sensor	Offset (ft)	Schematic	Description	Length (ft)	O.D. (in)	Weight (lb)
TEMP	14.17		Cable Head-Titan 143 1 7/16" Titan Cable Head	1.03	1.43	2.00
			Centralizer-275 Probe 2 3/4" Probe Adjustable Spring Centralizer	2.88	2.75	15.00
WVFS8	11.94		SCBL-275 Probe w Temp New Mod (141169.17 Probe Radii Bond Tool with Temperature	1169.17	2.75	95.00
WVFS7	11.94					
WVFS6	11.94					
WVFS5	11.94					
WVFS4	11.94					
WVFS3	11.94					
WVFS2	11.94					
WVFS1	11.94					
WVFCAL	11.94					
WVF3FT	11.94					
WVF5FT	10.94					

			Centralizer-275 Probe 2 3/4" Probe Adjustable Spring Centralizer	2.88	2.75	15.00
CCL	3.91					
			GR_CCL-275 Probe GR-CCL Corrosion Probe 2 3/4" Gamma Ray / CCL Corrosion Digital	(F4.54:12-242.75		60.00
GR	1.17					
			Bullnose-Titan GO Pin Pressure Cap	0.27	1.38	1.00
Dataset: 2-260345.db: field/well/run1/MAIN PASS Total length: 20.76 ft Total weight: 188.00 lb O.D.: 2.75 in						

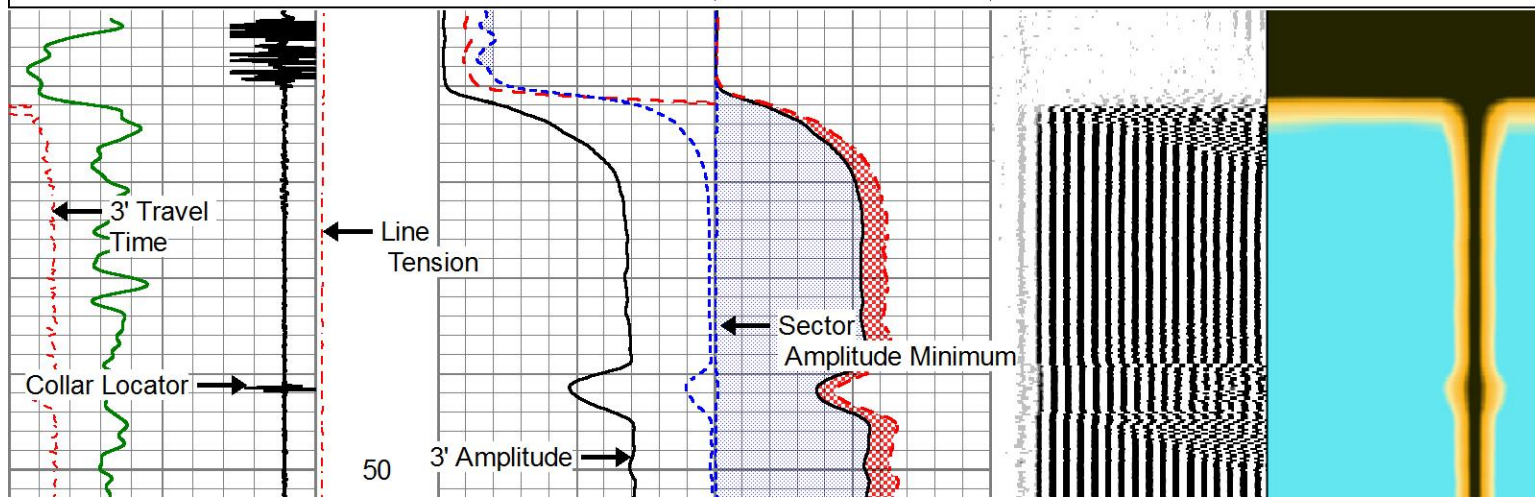


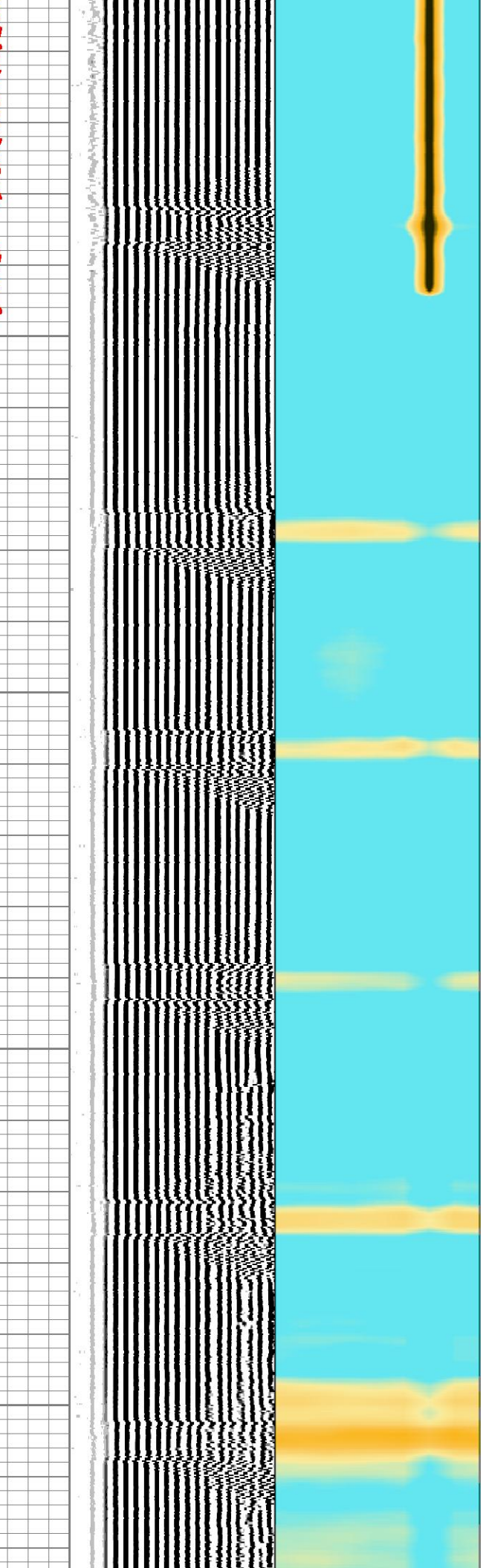
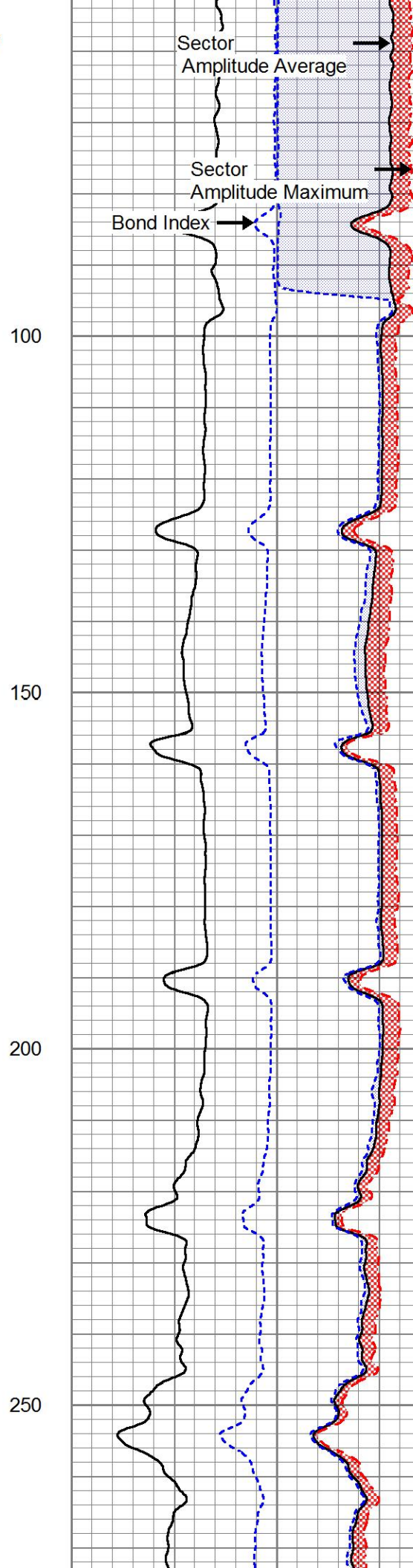
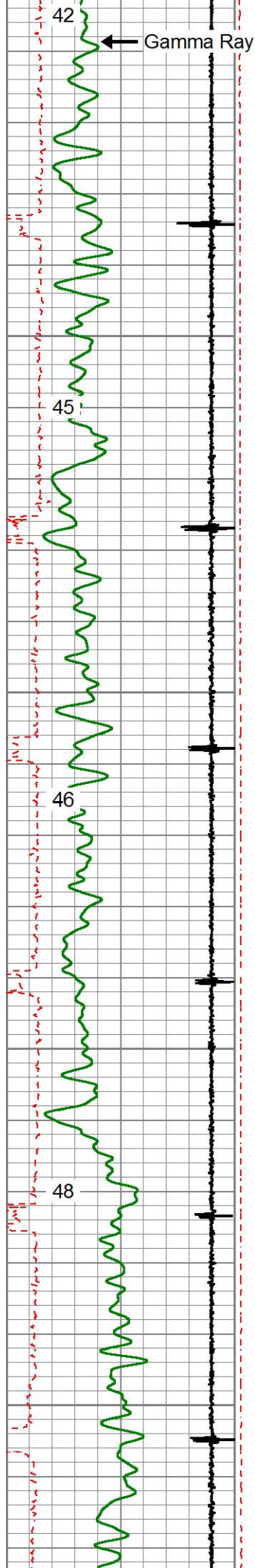
MAIN PASS

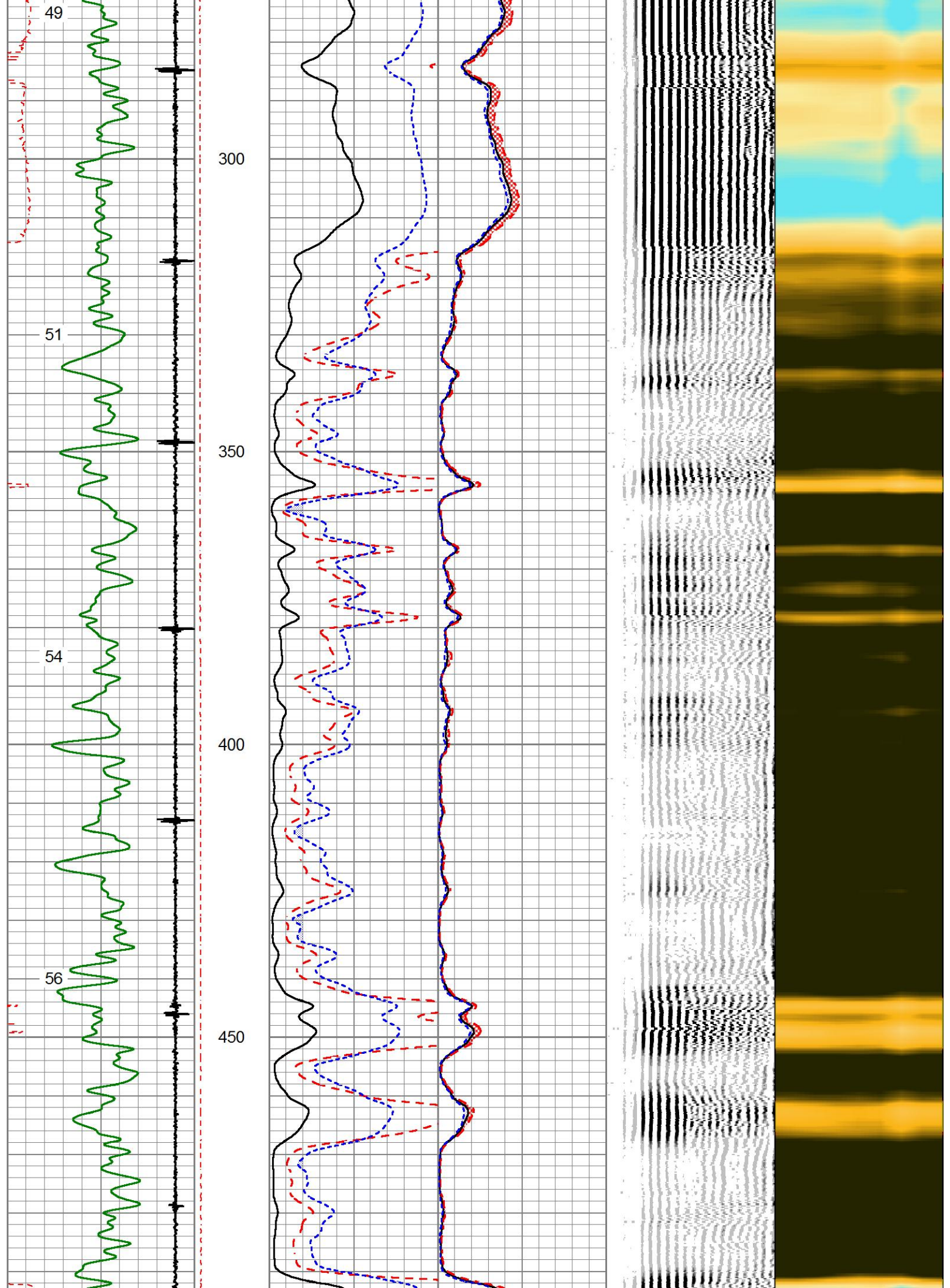
0 PSI ON WELL WHILE LOGGING

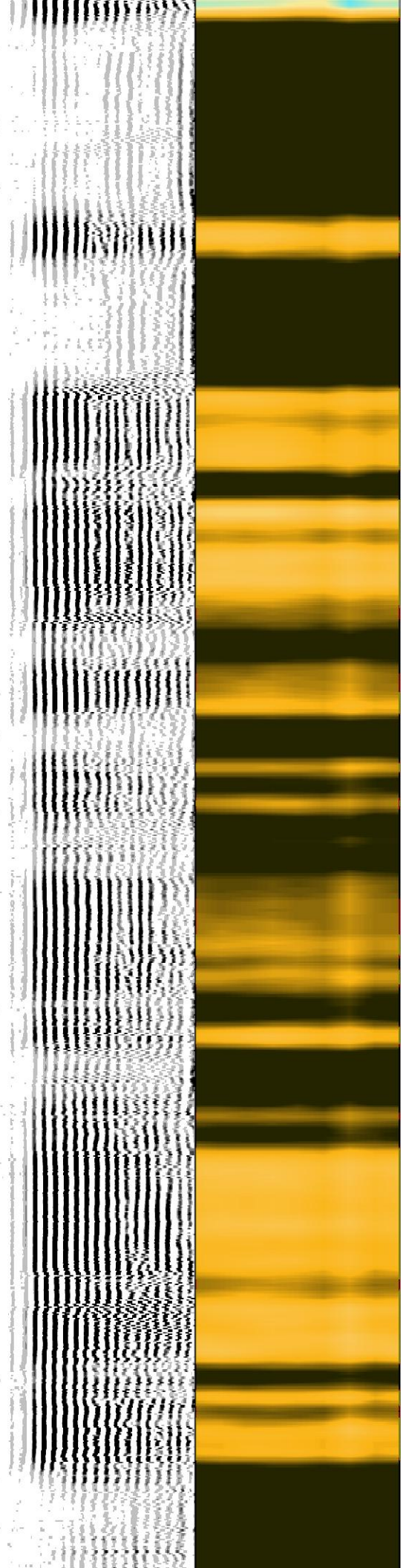
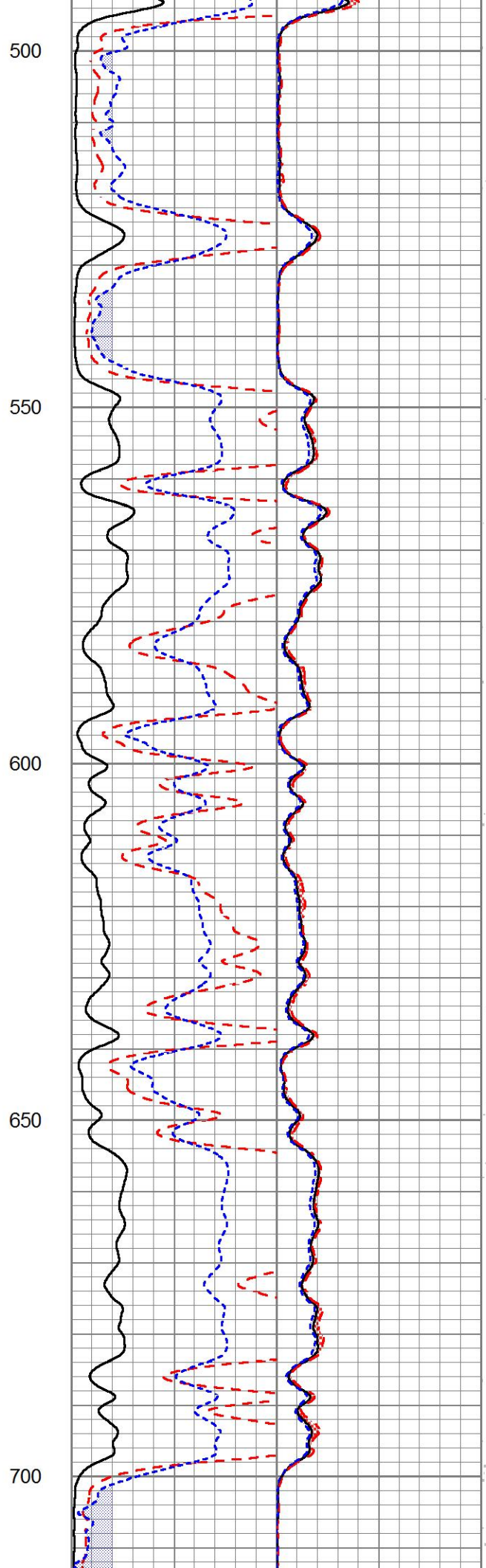
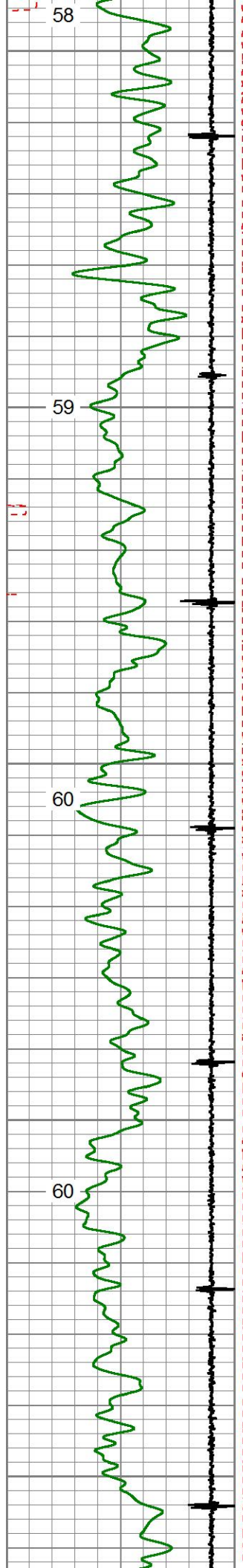
Database File	2-260345.db
Dataset Pathname	MAIN PASS
Presentation Format	pinr_scbl
Dataset Creation	Wed Mar 01 10:02:41 2017
Charted by	Depth in Feet scaled 1:240

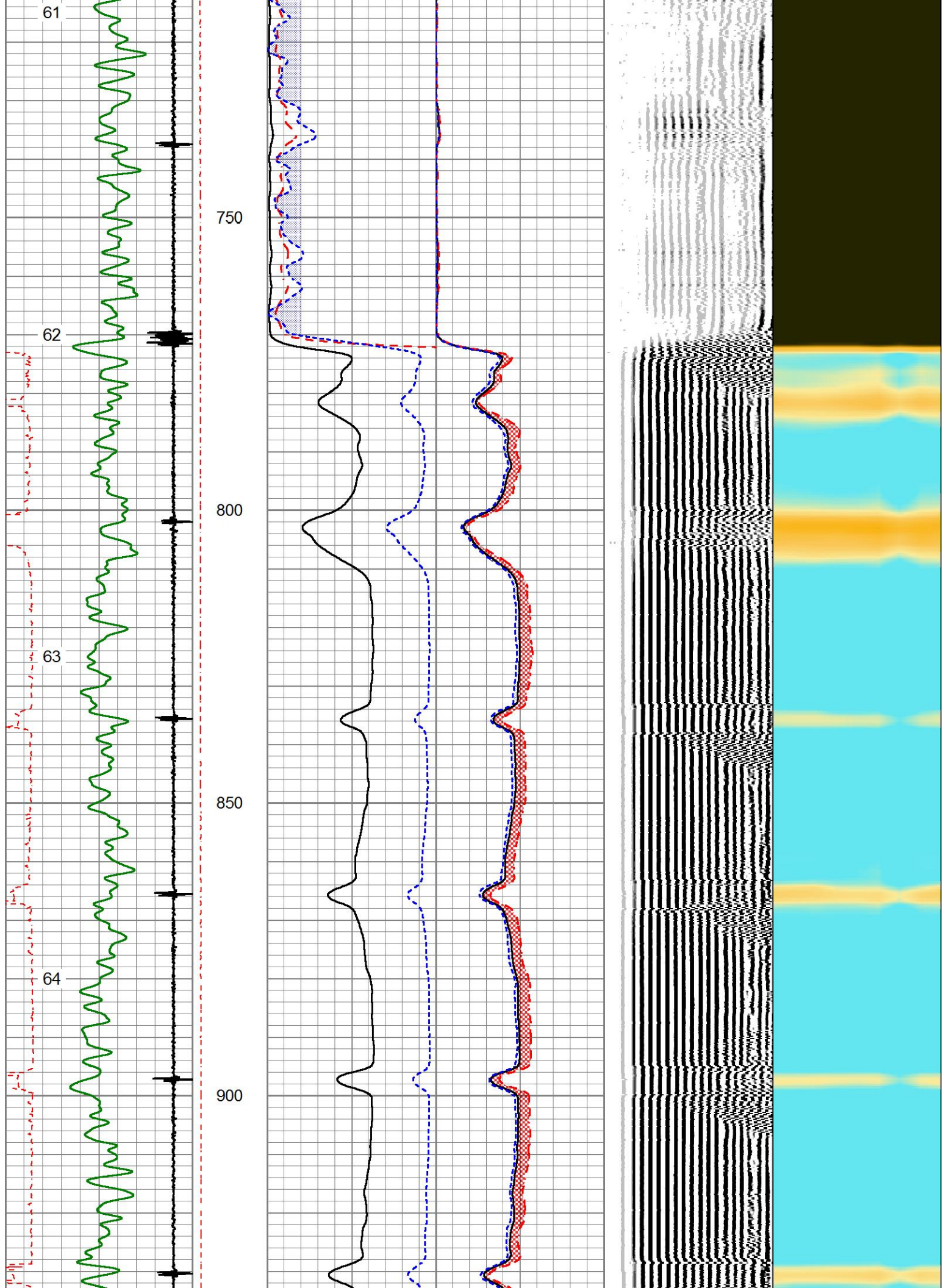
3' Travel Time	Line Tension	3' Amplitude (mV)	Sector Amplitude Average	200	VDL	1200	1	Sector Map	8
270 (usec)	0 (I2000)	0 100	0 150				10		60
-9 Collar Locator		3' Amplified Amplitude X 5							
Gamma Ray		0 (mV)	Sector Amplitude Maximum						
0 (GAPI)		1 Bond Index	0 150						
Temp (degF)			Sector Amplitude Minimum						
			0 150						

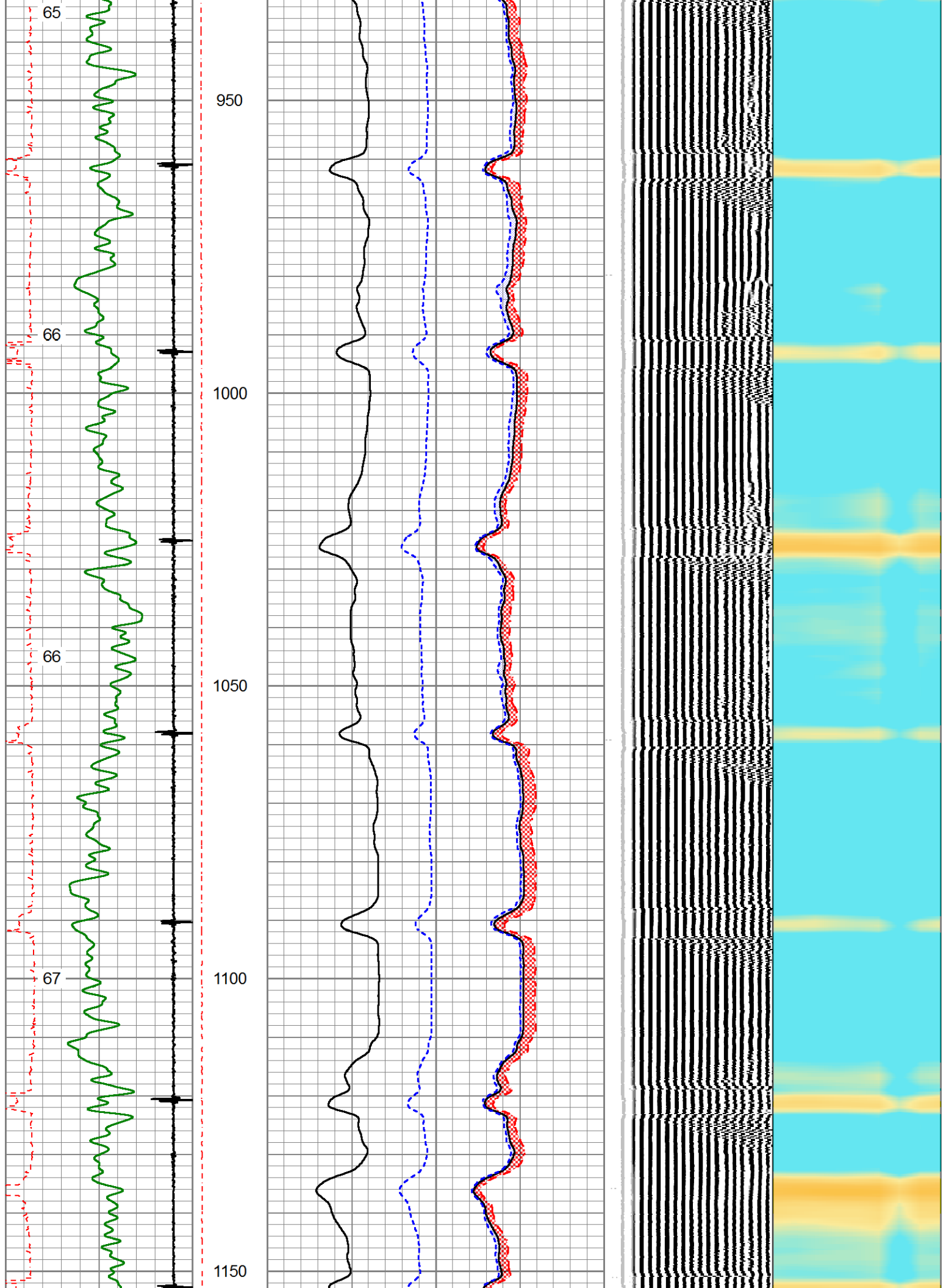


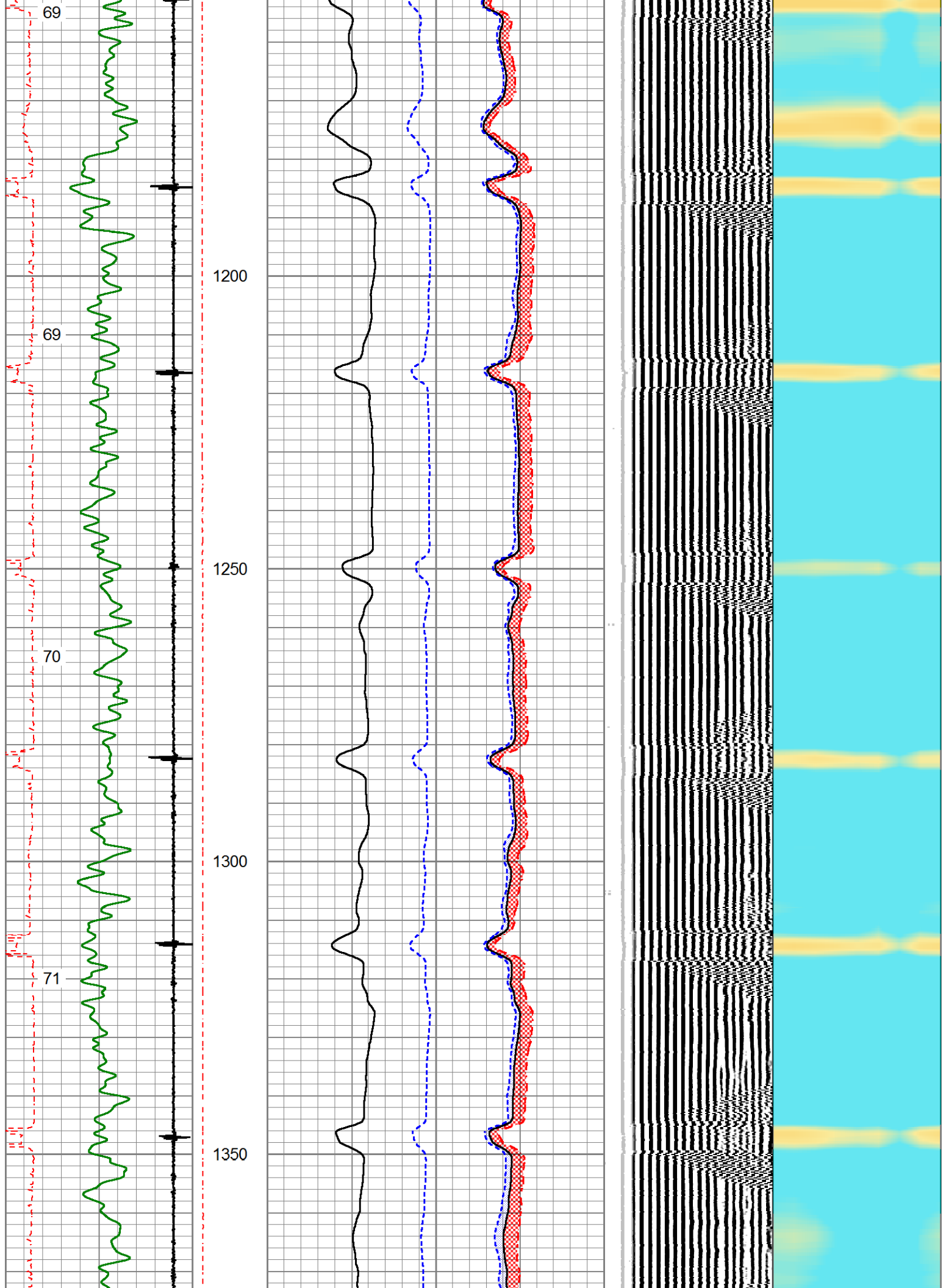


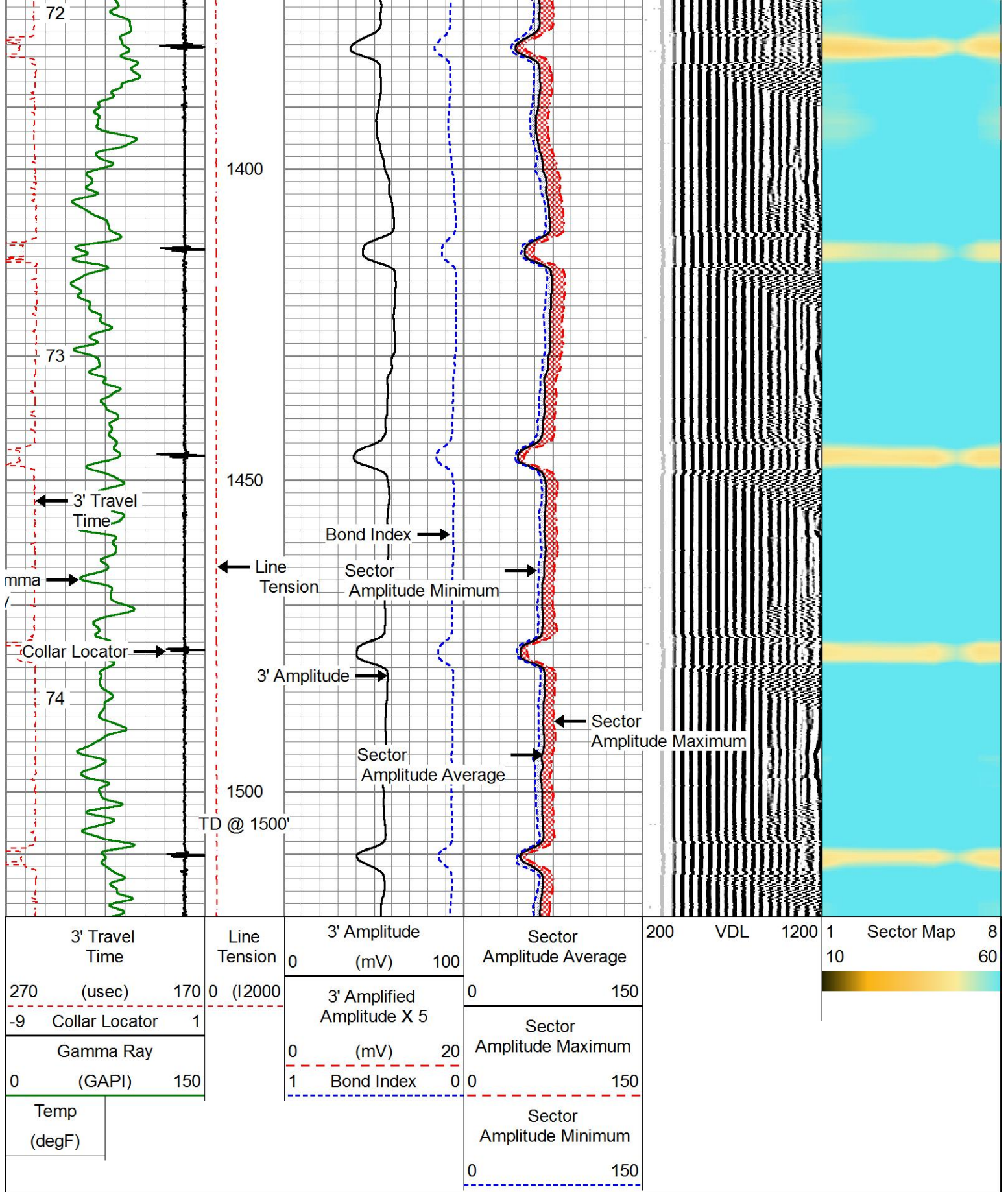




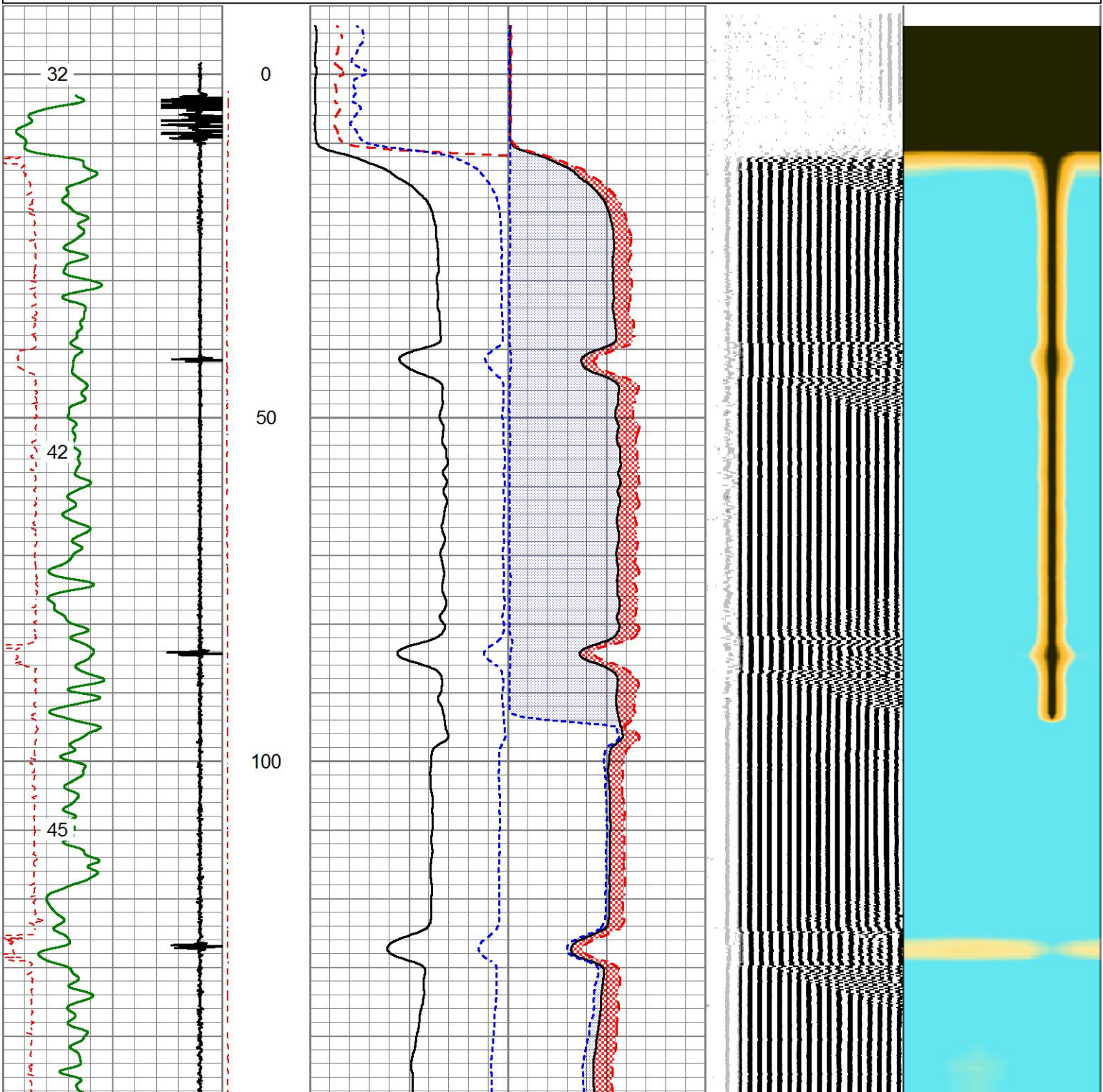


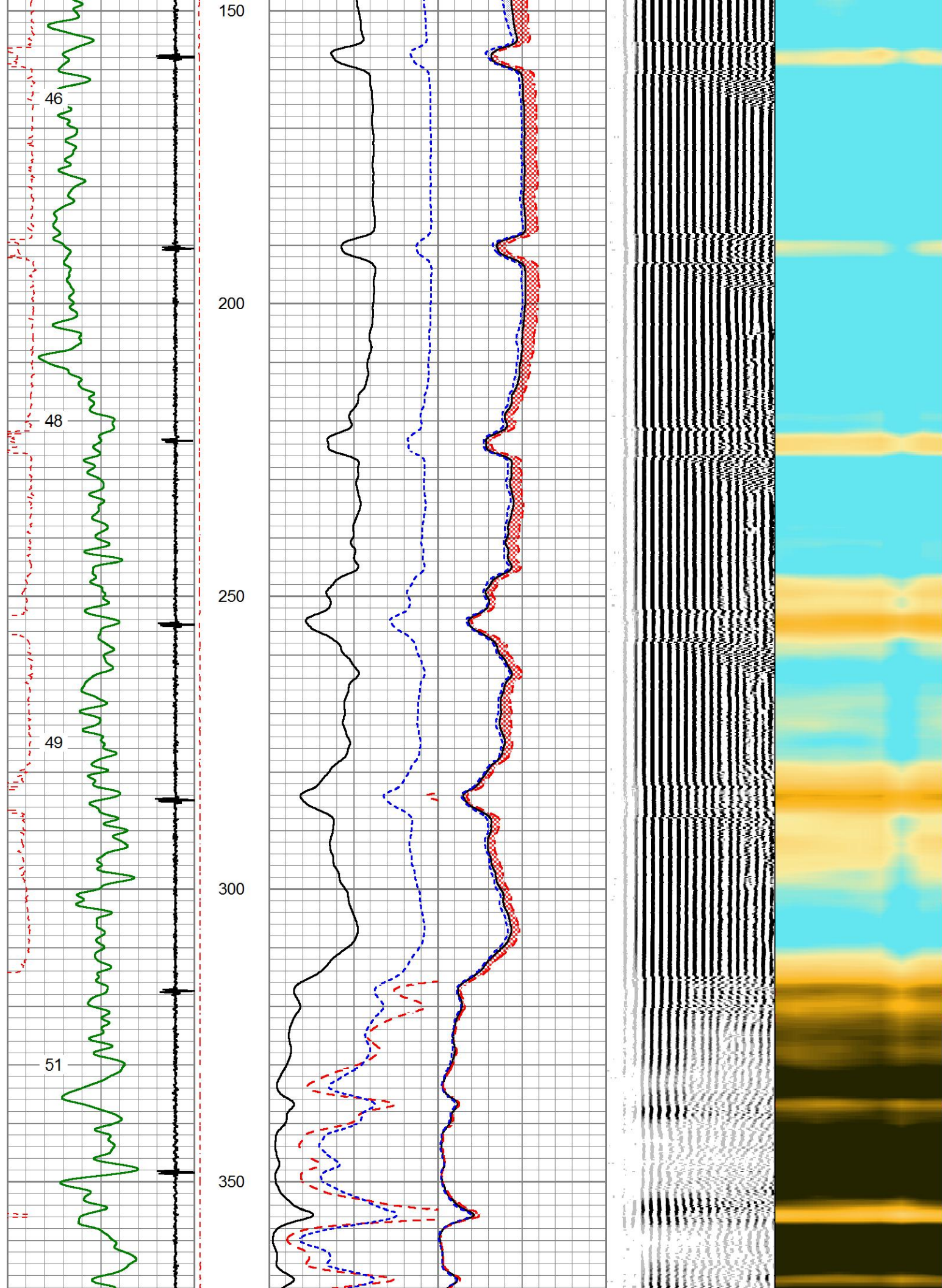


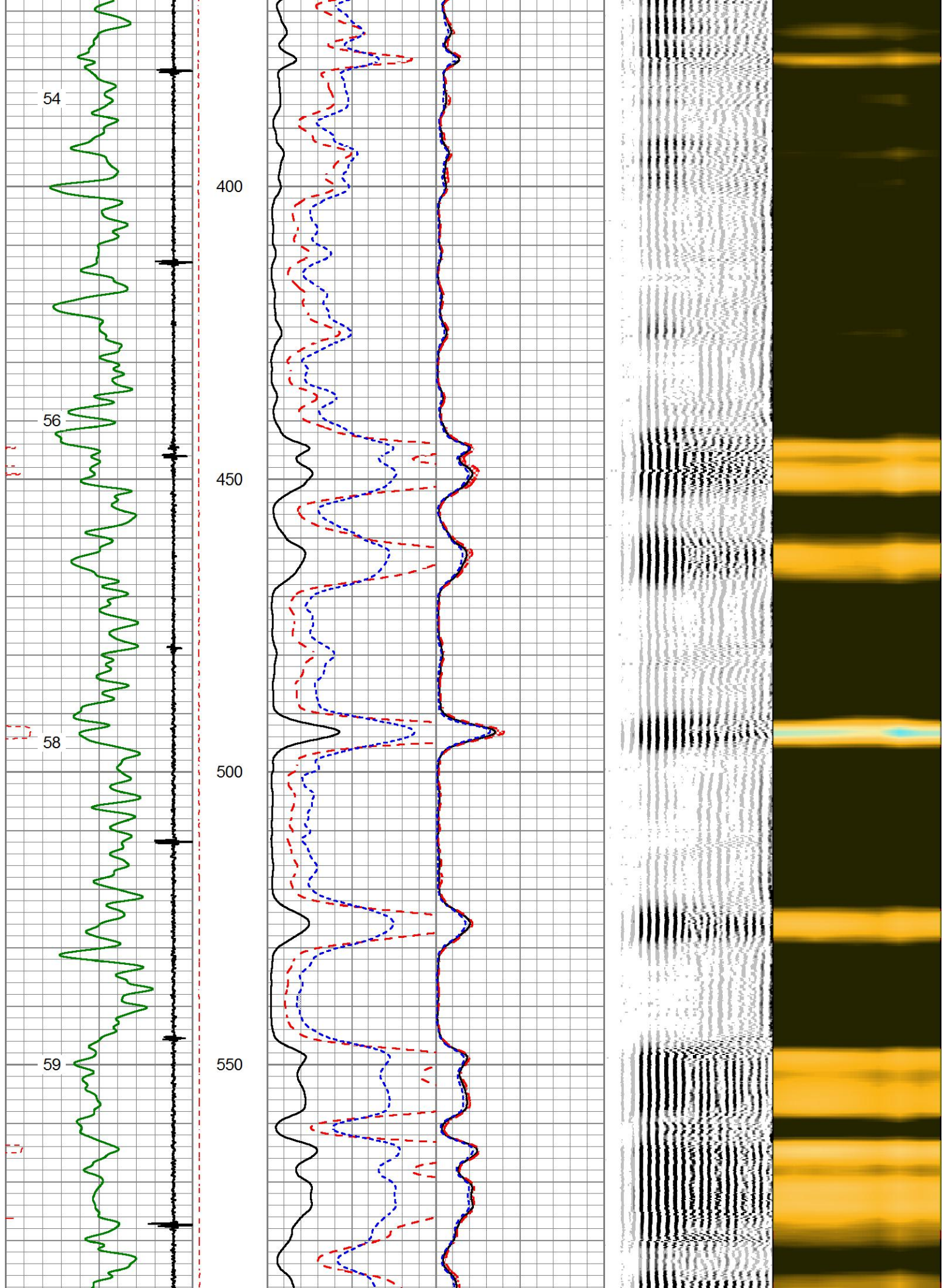


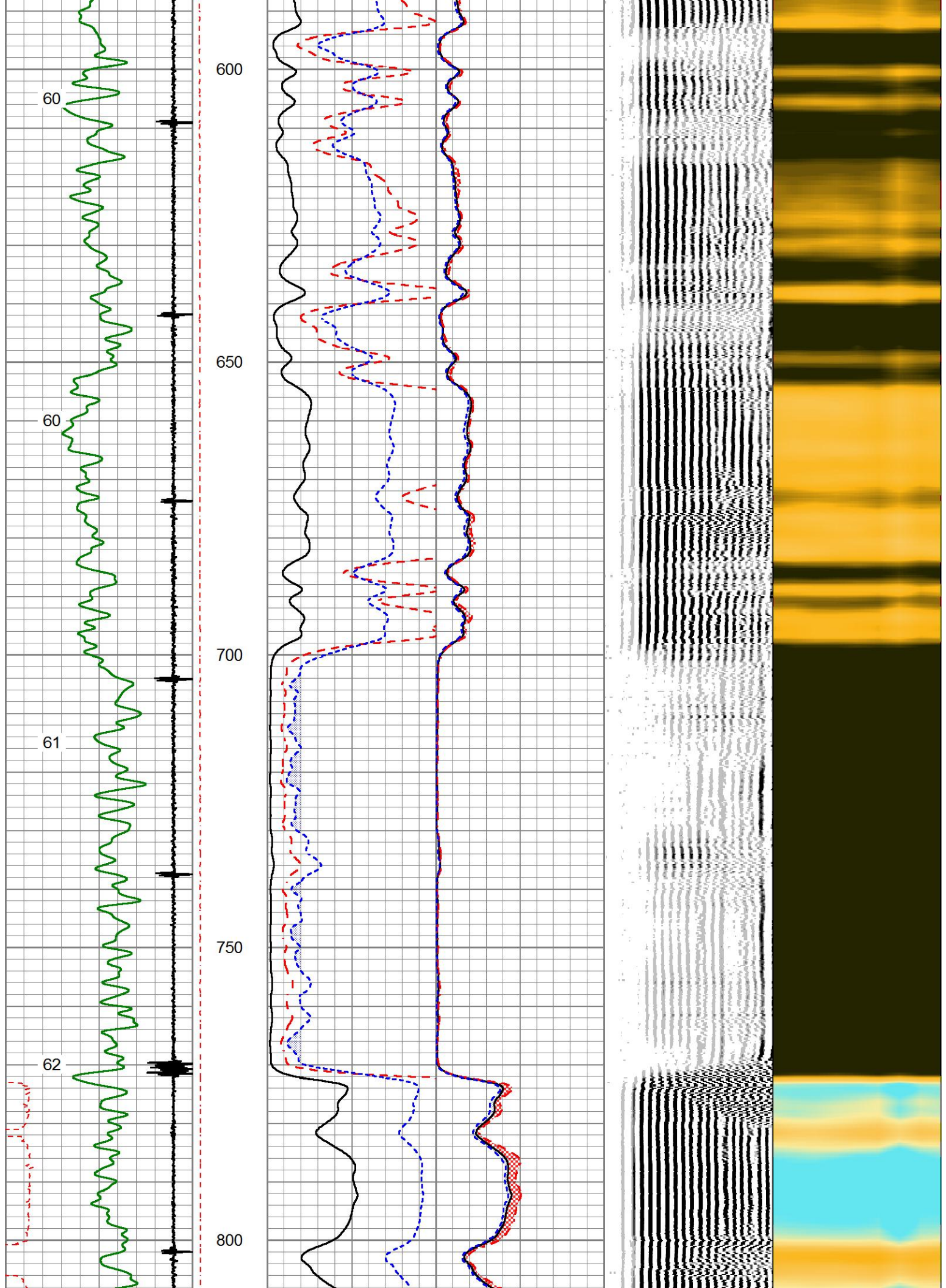


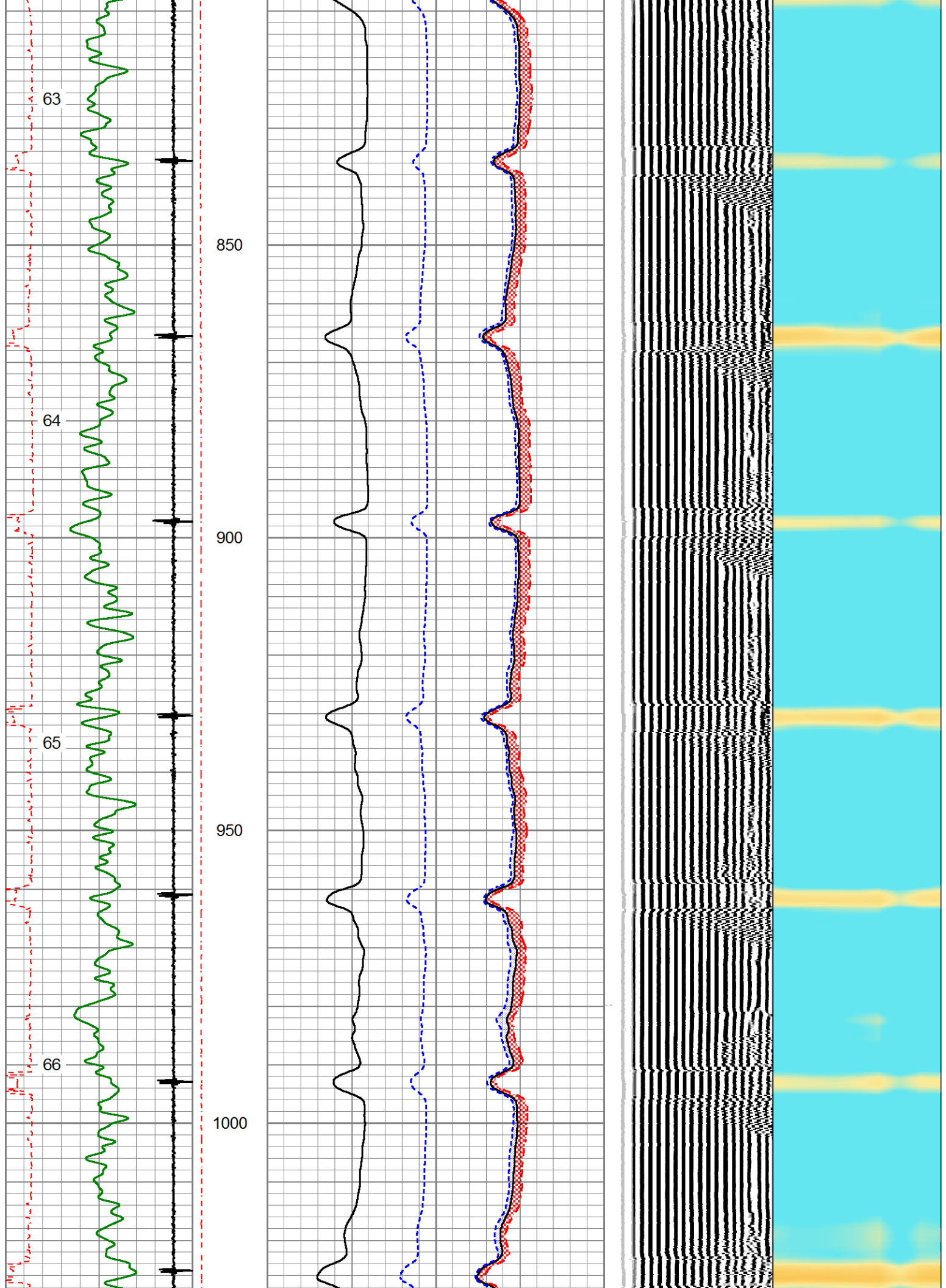
3' Travel Time			Line Tension	3' Amplitude		Sector Amplitude Average	200	VDL	1200	1	Sector Map	8		
		0		(mV)	100								10	60
270	(usec)	170		3' Amplified Amplitude X 5									0	150
-9 Collar Locator		1												
Gamma Ray				0 (mV)									20	Sector Amplitude Maximum
0 (GAPI)		150	1 Bond Index		0	0	150							
Temp (degF)					Sector Amplitude Minimum									
					0		150							

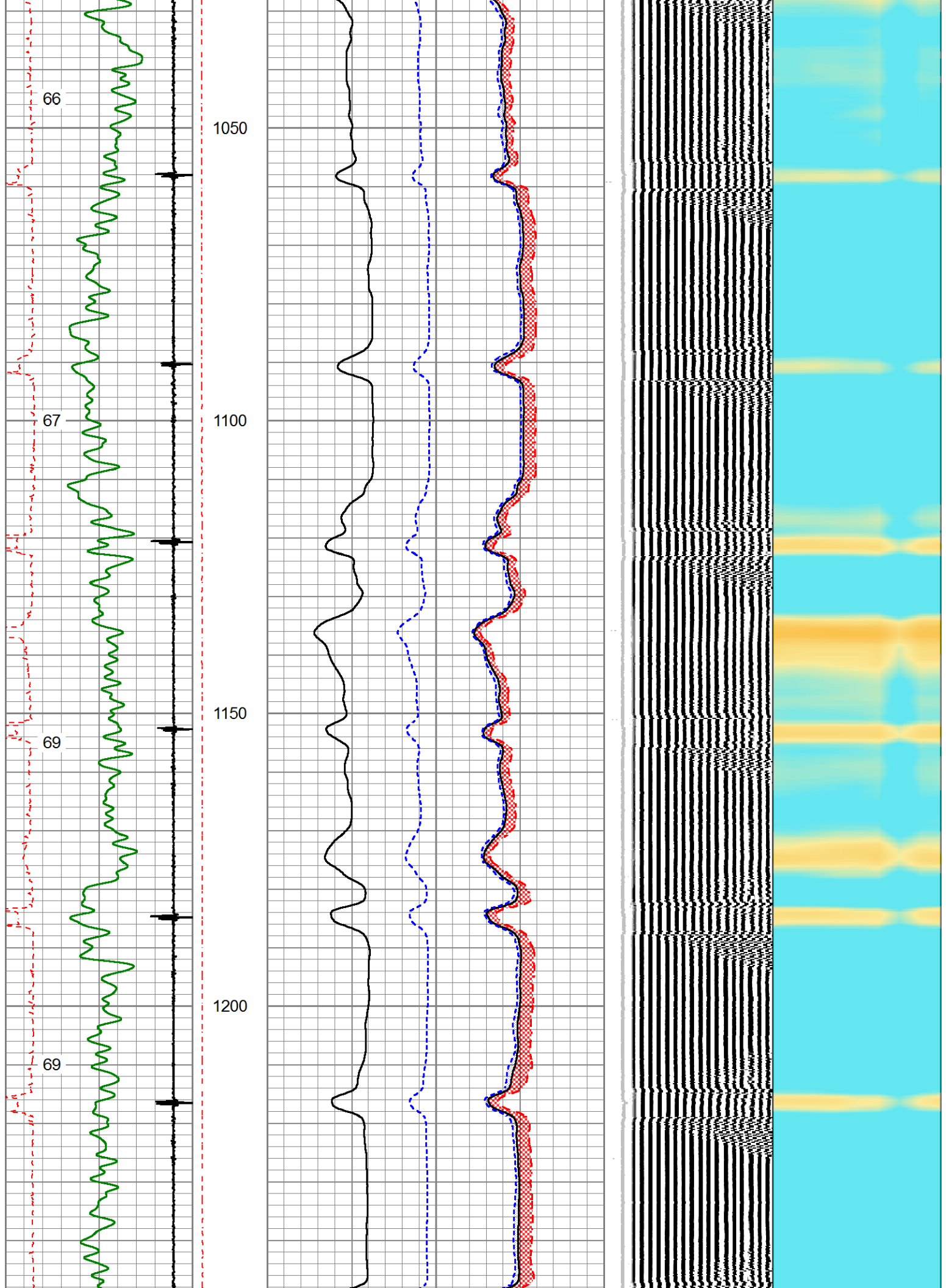


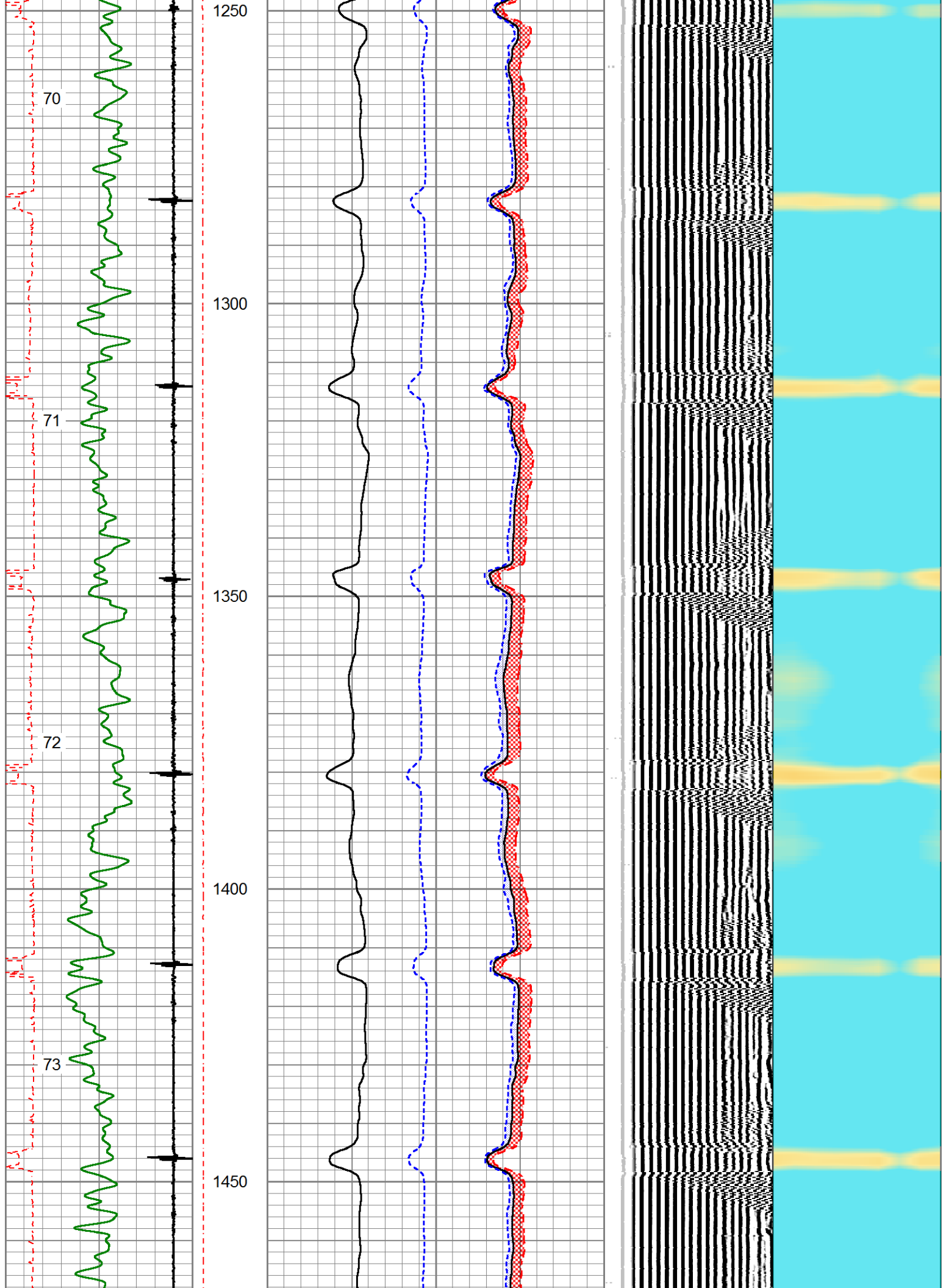


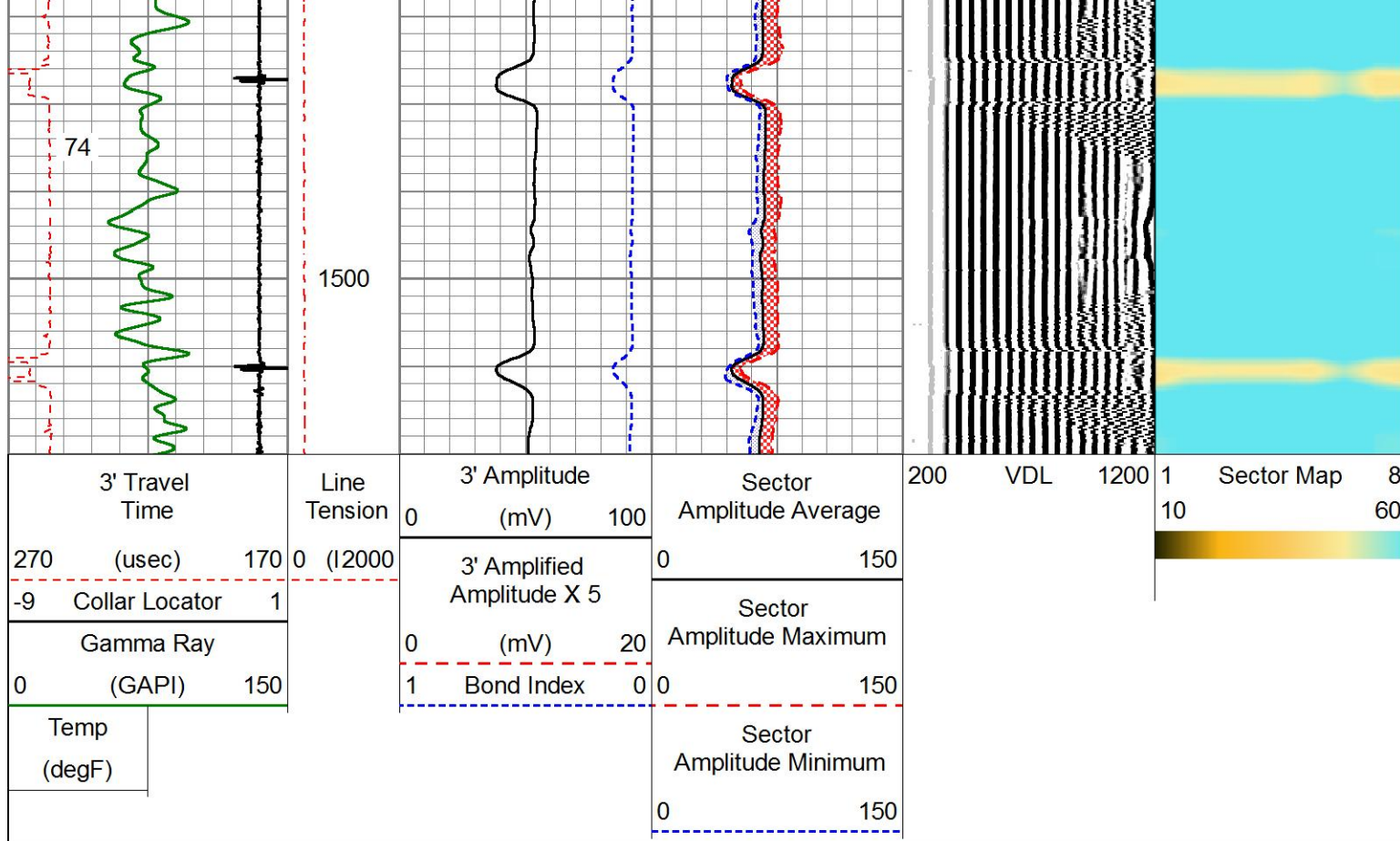












Calibration Report

Database File 2-260345.db
 Dataset Pathname MAIN PASS
 Dataset Creation Wed Mar 01 10:02:41 2017

Gamma Ray Calibration Report

Serial Number: FW1212-24
 Tool Model: 275 Probe GR-CCL Corrosion
 Performed: Fri Feb 24 10:55:28 2017

Calibrator Value: 320.0 GAPI

Background Reading: 14.0 cps
 Calibrator Reading: 1153.0 cps

Sensitivity: 0.7000 GAPI/cps

Segmented Cement Bond Log Calibration Report

Serial Number: 141166
 Tool Model: 275 Probe w Temp New Mod

Calibration Casing Diameter: 5.500 in
 Calibration Depth: 1045.275 ft

Master Calibration, performed (Derived):

	Raw (v)		Calibrated (mv)		Results	
	Zero	Cal	Zero	Cal	Gain	Offset
3'	0.011	1.191	1.000	74.000	61.877	0.333
CAL	1.514	1.511				
5'	0.004	1.411	1.000	74.000	51.888	0.772

SUM						
S1	0.017	1.384	0.000	100.000	73.131	-1.241
S2	0.013	1.392	0.000	100.000	72.533	-0.958
S3	0.012	1.357	0.000	100.000	74.354	-0.874
S4	0.008	1.390	0.000	100.000	72.360	-0.585
S5	0.010	1.449	0.000	100.000	69.463	-0.687
S6	0.011	1.476	0.000	100.000	68.272	-0.757
S7	0.009	1.249	0.000	100.000	80.662	-0.725
S8	0.010	1.395	0.000	100.000	72.238	-0.737

Temperature Calibration Report

Serial Number: 141166
 Tool Model: 275 Probe w Temp New Mod
 Performed: Thu Feb 2 07:20:08 2017

	Reference	Reading
Low Reference:	35.00 degF	0.25 degF
High Reference:	210.00 degF	1.31 degF
Gain:	0.76	
Offset:	6.00	
Delta Spacing	1	



Company	KERR MCGEE OIL & GAS ONSHORE
Well	ACKERSON DORIS B 1
Field	WATTENBERG
County	WELD
State	CO
Country	USA