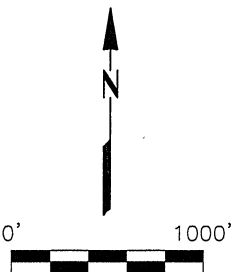
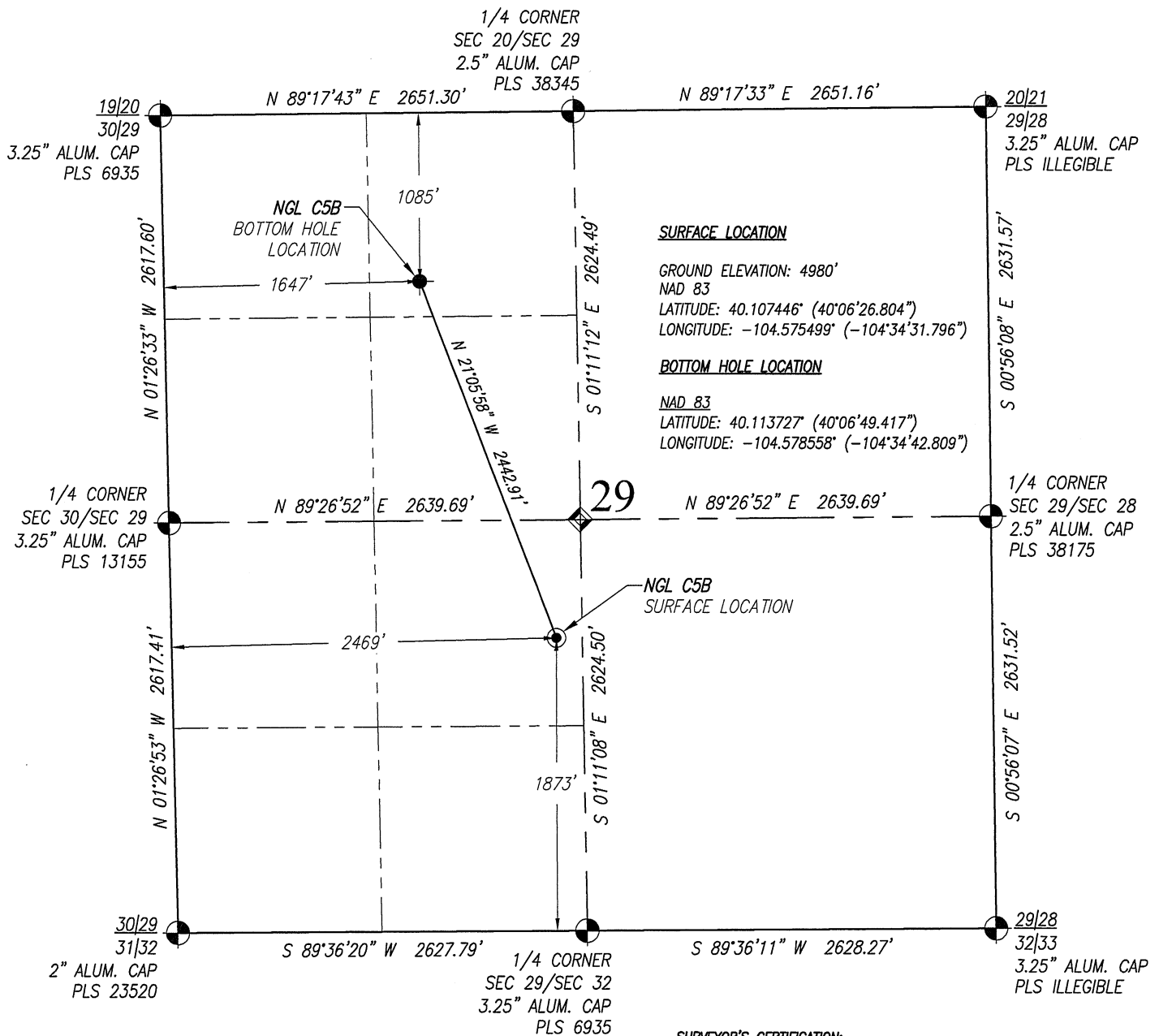


# WELL LOCATION CERTIFICATE: NGL C5B

SECTION 29, TOWNSHIP 2N, RANGE 64 WEST, 6TH P.M. WELD COUNTY, COLORADO.



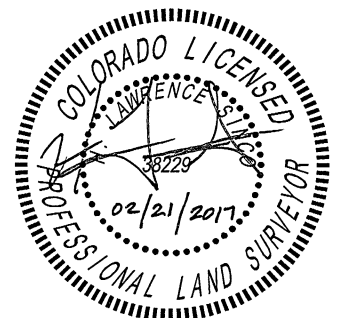
## NOTES:

1. Denotes Found Section Corner
2. Denotes Calculated Section Corner
3. Basis of Bearings are based on the Colorado State Plane Coordinate System, NAD 1983, derived by GPS observations. Shown hereon as label between monuments.  
Basis of Distances: GRID; Combined Factor=0.999719963  
Elevations are based on NAVD88 (GEOID12).  
Surface use of location is: **IRRIGATED CROPLAND PDOP: 1.6**  
GPS Operator: Monty Wallace
4. See attachment to Well Location Certificate for existing improvements within 500 feet of the well pad.
5. Well footages are measured at right angles to the section lines.

## SURVEYOR'S CERTIFICATION:

I, hereby certify to **NGL WATER SOLUTIONS DJ, LLC**, that this Well Location Certificate shown hereon was done by me or under my direct supervision and that the drawing shown hereon accurately depicts the proposed location of the well. This certificate does not represent a Land Survey Plat or an Improvement Survey Plat as defined by C.R.S. 38-51-102 and cannot be relied upon to determine ownership.

H. Lawrence Sinco, PLS #38229  
FOR AND ON BEHALF OF ACKLAM, INC.  
195 Telluride Street Suite 7  
Brighton CO 80601



PREPARED FOR:

**NGL WATER  
SOLUTIONS DJ, LLC**

**Acklam, Inc.**

**WELL PAD - NGL C5B**

DATE SURVEYED: 2/3/2017

DATE DRAFTED: 2/9/2017

DRAFTED BY: SMF CHECKED BY: LS

JOB No. 179001 REVISED:

**NGL C5B**

1873' FSL & 2469' FWL (SURFACE)  
1085' FNL & 1647' FWL (BOTTOM)

**NOTICE:** According to Colorado law you must commence any legal action based upon any defect in this survey within three years after you first discover such defect. In no event may any action based upon any defect in this survey be commenced more than ten years from the date of the certification shown hereon.

SHEET 1 OF 1