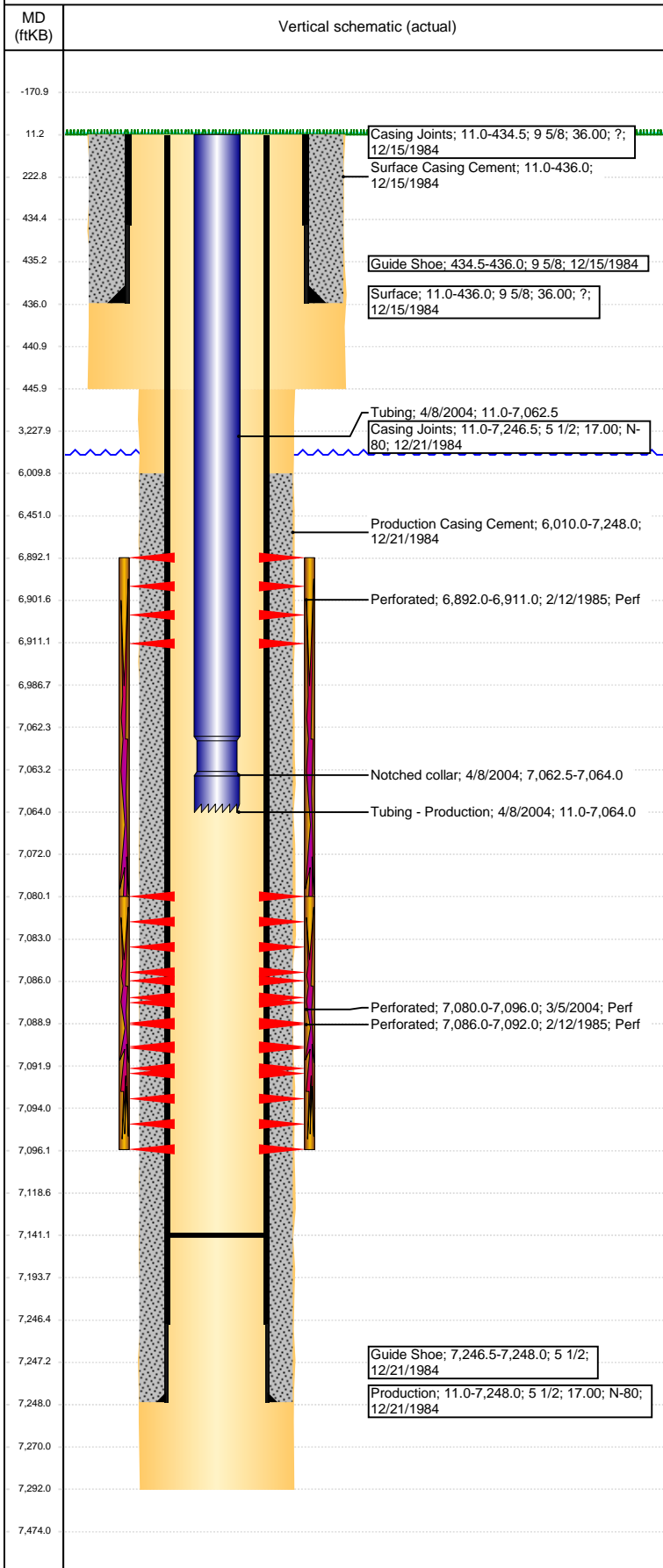


**Well Name: GOETZEL 02-29**

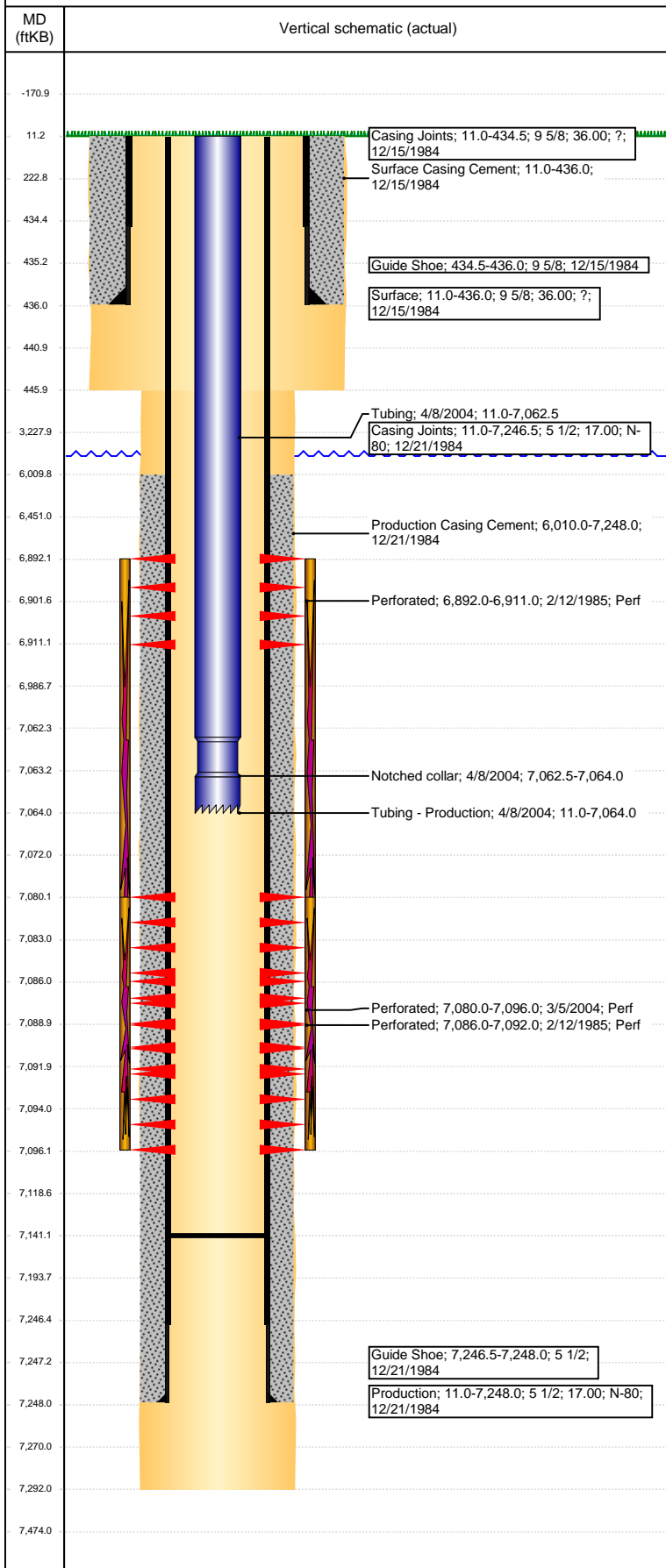
VERTICAL - ORIGINAL HOLE, 4/4/2017 12:13:47 PM



Well Header						
API 05-123-12196	Business Unit DJ BASIN		District 15		Well Config VERTICAL	
Original KB Elevation (ft) 4,740	KB - GL / MSL (ftKB) 11.00		Spud Date 12/15/1984		P & A Date	
Comment						
Directions To Well						
Congressional Location						
Quarter 3 NE	Quarter 4 SW	Section 29	Township 6	Twnshp N/S Dir N	Range 66	Range E/W Dir W
Bottom Hole Location						
North-South Distance (ft)		From N or S Line		East-West Distance (ft)		From E or W Line
Plug Back Total Depths						
Date	Depth (ftKB)	Method		Com		
12/26/1984	7,137.0	CASED HOLE LOG		DEPTH LOGGER FROM CBL		
4/8/2004	7,141.0	TAG		CLEAN OUT & LAND TBG		
Wellbore Sections						
Section Des		Size (in)		Act Top, MD (ftKB)		Act Btm, MD (ftKB)
SURFACE		13 1/4		11		446
PRODUCTION		7 7/8		446		7,292
Zone Statuses						
Zone Name	Status Date	Status	Fluid Type	Job	Prod Method	
CODELL	5/9/1985	PR	Oil	DRILLING/CO...		
CODELL	5/24/2004	PR	Oil	RE-FRAC, 3/1/...		
NIOBRARA	5/9/1985	PR	Oil	DRILLING/CO...		
NIOBRARA-C...	5/9/1985	PR		DRILLING/CO...		
Casing Strings						
Surface, 436.0ftKB						
Casing Description Surface	Run Date 12/15/1984	OD (in) 9 5/8	Wt/Len (l... 36.00	Grade ?	Top, MD (ft... 11.0	MD (ftKB) 436.0
Production, 7,248.0ftKB						
Casing Description Production	Run Date 12/21/1984	OD (in) 5 1/2	Wt/Len (l... 17.00	Grade N-80	Top, MD (ft... 11.0	MD (ftKB) 7,248.0
Cement						
Description Surface Casing Cement				Top Depth (ftKB) 11.0		Bottom Depth (ftKB) 436.0
Description Production Casing Cement				Top Depth (ftKB) 6,010.0		Bottom Depth (ftKB) 7,248.0
Tubing Strings						
Tubing Description Tubing - Production	Run Date 4/8/2004	String... 2 3/8	ID (in) 2.00	Wt (lb/ft) 4.70	Grade J-55	Len (ft) 7,053.00
Tubing Components						
Item Des	OD (in)	Wt (lb/ft)	Grade	Jts	Len (ft)	Btm (ftKB)
Tubing	2 3/8	4.70	J-55	218	7,051.50	7,062.5
Notched collar	2 3/8			1	1.50	7,064.0
Other In Hole						
Run Date	Des			OD (in)	Top (ftKB)	Btm (ftKB)
Logs						
Date	Type				Top, MD (ftKB)	Btm, MD (ftKB)
12/20/1984	COMPENSATED NEUTRON				6,698.0	7,273.0
12/20/1984	INDUCTION				437.0	7,270.0
12/26/1984	CBL/CCL/GR				5,530.0	7,135.0
Perforation Data						
Linked Zone	Bnch/St g	Sum of Entered Shot Total	Top (ftKB)	Btm (ftKB)	Date	
NIOBRARA, ORIGINAL HOLE		10	6,892.00	6,911.00	2/12/1985	
CODELL, ORIGINAL HOLE		64	7,080.00	7,096.00	3/5/2004	
CODELL, ORIGINAL HOLE		4	7,086.00	7,092.00	2/12/1985	
Total (Sum)		78				

**Well Name: GOETZEL 02-29**

VERTICAL - ORIGINAL HOLE, 4/4/2017 12:13:49 PM



## Stimulation Intervals

Start Date 2/19/1985	Primary Job Type DRILLING/COMPLETION - ORIGINAL	
Technical Result	Tech Result Details	Tech Result Note
Comment LIMITED ENTRY		
Start Date 4/6/2004	Primary Job Type RE-FRAC	
Technical Result	Tech Result Details	Tech Result Note
Comment		