



Goetzel 02-29

P&A Procedure

Engineer: JOHN HATCH (CELL #303-505-6589)

Authored 4/3/17

LOCATION:

Qtr/Qtr: NESW Section: 29 Township: 6N Range: 66W
Footages: 1988 FSL & 2185 FWL
COUNTY: WELD STATE: CO API #: 05-123-12196

WELL DATA:

Surface Csg: 9 5/8" 36# at 436' KB Elevation: 4740'
Surface Cmt: 260 sx GL Elevation: 4729'
Long St Csg: 5.5" 17# N-80 at 7248' TD: 7292'
Long St Cmt: 215 sx PBDT: 7141'
Long St Date: 12/21/1984

Plug Back (Sand or CIBP): Sand
Perforation Interval (1): Niobrara Perforations 6892' - 6911'
Perforation Interval (2): Codell Perforations 7080' - 7092'
Perforation Interval (3): _____
Tubing: 2-3/8" 4.70# J-55 @ 7053' Rods: N/A
Pump: _____
Misc.: _____
Misc.: _____

PRODUCTION STATUS:

Producing

COMMENTS:

PROCEDURE:

- 1) MIRU workover rig, pump, and tank.
- 2) POOH and stand back tbg.
- 3) RU WL and RIH w/ CIBP and set @ 6842' (50' above Nio top perf).
- 4) Dump bail 2 sx of Class G Neat cement on top of CIBP.
- 5) RIH w/ 1' perforating gun and shoot 4-6 spf @ 4450' (TOC is 6010').
- 6) RIH w/ CICR on workstring and set @ 4350' (100' above perforations).
- 7) Pump 10 bbls Mud Flush (or similar spacer) followed by 210 sx of Class G Neat cement.
- 8) Unsting from CICR.
- 9) Pump 60 sx balanced plug of Class G Neat cement from CICR to 3850'.
- 10) POOH w/ workstring and RIH w/ 1' perforating gun and shoot 4-6 spf @ 2500'.
- 11) RIH w/ CICR on workstring and set @ 2400' (100' above perforations).
- 12) Pump 10 bbls Mud Flush (or similar spacer) followed by 190 sx of Class G Neat cement.
- 13) Place remaining 2 bbls of cement on top of CICR. Allow to fall on CICR as pulling out. TOC: 2314'
- 14) POOH w/ workstring.
- 15) RIH w/ WL and cut production casing at 636' (200' below surface shoe, Fox Hills, or deepest water well).
- 16) Unland production casing.
- 17) POOH and LD production casing filling pipe every 6 joints.
- 18) RIH w/ workstring to 686' (50' below csg stub)
- 19) Pump 10 bbls Mud Flush (or similar spacer) followed by 270 sx of cement as a balanced plug.
- 20) POOH w/ workstring. Top off cement if needed. Cement needs to be ~10' from surface.
- 21) RDMO.

NOBLE ENERGY INC.
 Goetzel 02-29
 NESW 29-6N-66W
 1988 FSL & 2185 FWL
 WELD COUNTY, CO
 Wattenberg
CURRENT WELLBORE SCHEMATIC
 with PROPOSED P&A

API: 05-123-12196
 COGCC #

GL Elev: 4729'
 KB Elev: 4740'

Spud Date: 12/15/1984

Surface Casing :
 9 5/8" 36# at 436'
 Cement: 260 sx
 TOC: Surface

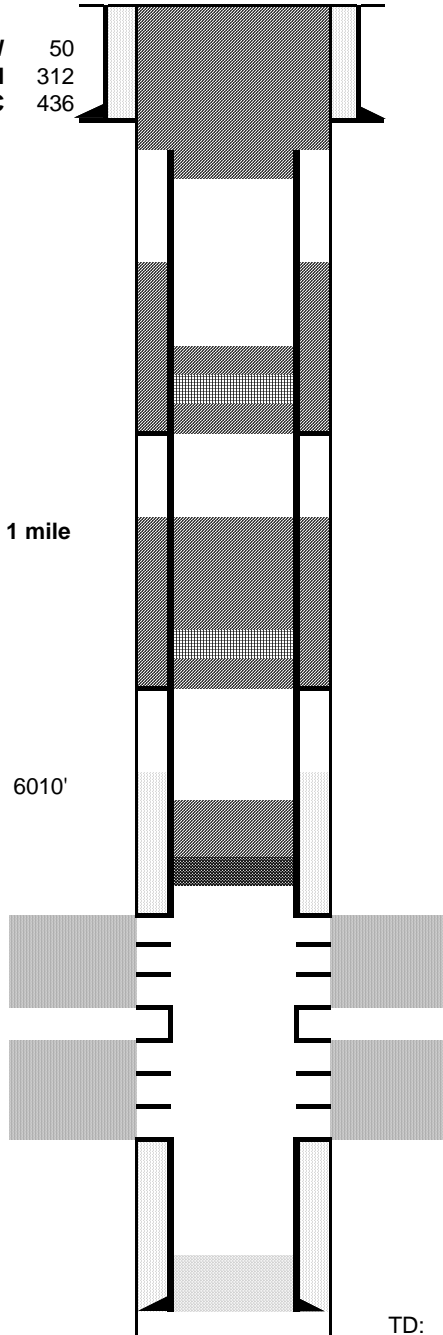
Production Casing :
 5.5" 17# N-80 at 7248'
 Cement: 215 sx
 TD Date: 12/21/1984

WW 50
 FH 312
 SC 436

Sussex completions within 1 mile

TOC @ 6010'

TD: 7292'



Cut surface casing off 6'-8' below surface.

Cut production casing at 636'
 Cmt to surface with 270 sx at 686'

Pump 190 sx plug through/on CICR
 Cmt Coverage inside PC: 2314'
 Cmt Coverage outside PC: 2000'
 Set CICR at 2400'
 Shoot sqz perfs at 2500'

Pump 60 sx plug on CICR
 Pump 210 sx plug through CICR
 Cmt Coverage inside PC: 3850'
 Cmt Coverage outside PC: 3850'
 Set CICR at 4350'
 Shoot sqz perfs at 4450'

Set CIBP at 6842' with 2 sx cement
 New TOC: 6825'

Niobrara Perforations 6892' - 6911'

Codell Perforations 7080' - 7092'