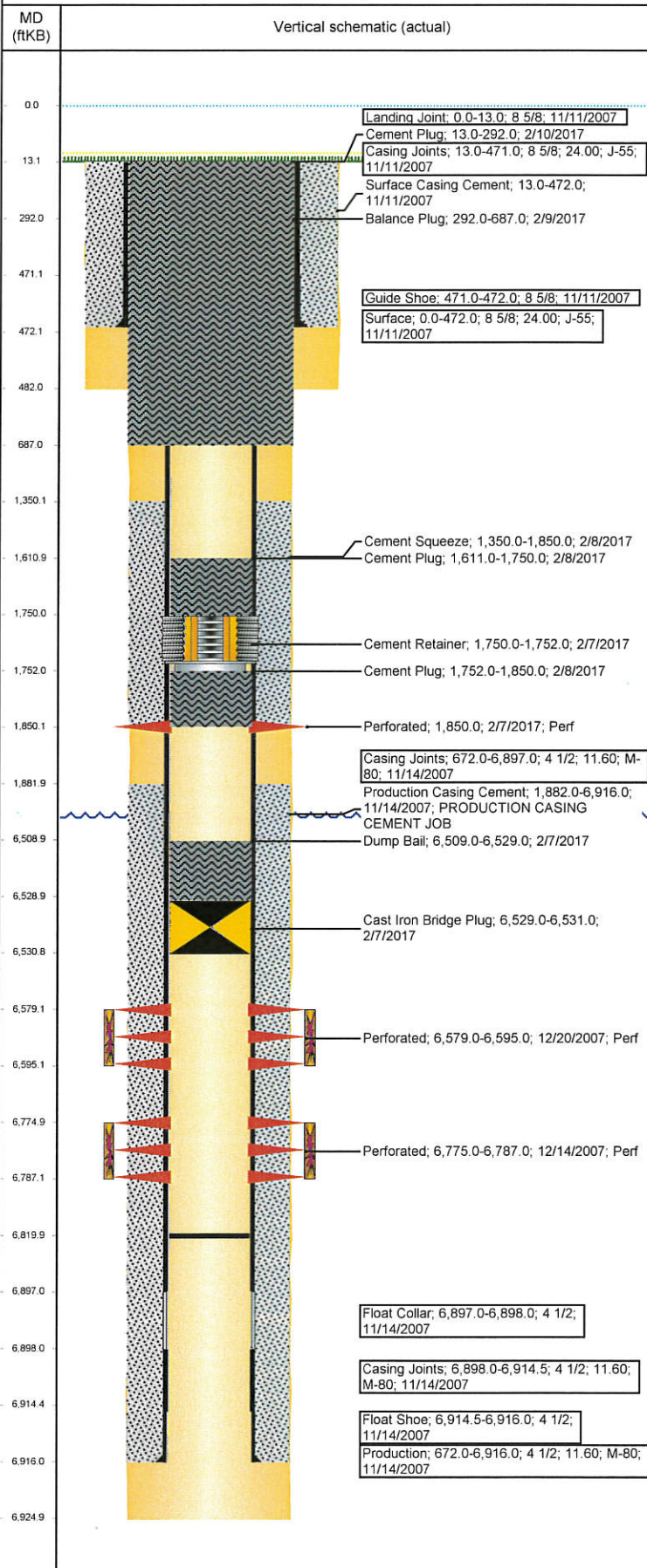


Wellbore Schematic Input Report

Well Name: WILMOTH C14-19

VERTICAL - ORIGINAL HOLE, 4/4/2017 9:39:35 AM



Well Header

API	Business Unit	District	Well Config
05-123-24526	DJ BASIN	15	VERTICAL
Original KB Elevation (ft)	KB - GL / MSL (ftKB)	Spud Date	P & A Date
4,654	13.00	11/11/2007	2/10/2017
Comment			

Directions To Well
WCR 57 & WCR 46, E 0.2, S 0.3 INTO LOCATION

Congressional Location

Quarter 3	Quarter 4	Section	Township	Twnshp N/S Dir	Range	Range E/W Dir
SE	NW	14	4	N	64	W

Bottom Hole Location

North-South Distance (ft)	From N or S Line	East-West Distance (ft)	From E or W Line

Plug Back Total Depths

Date	Depth (ftKB)	Method	Com
12/14/2007	6,879.0	CASED HOLE LOG	DEPTH LOGGER FROM CBL
2/13/2008	6,820.0	TAG	PUSHED THE CAST IRON FLOW THUR PLUG TO...

Wellbore Sections

Section Des	Size (in)	Act Top, MD (ftKB)	Act Btm, MD (ftKB)
Surface	12 1/4	13	482
Production	7 7/8	482	6,925

Zone Statuses

Zone Name	Status Date	Status	Fluid Type	Job	Prod Method
NIOBRARA	12/22/2007	PR		DRILLING/CO...	
NIOBRARA	2/7/2017	P&A		PLUG AND AB...	
CODELL	12/22/2007	PR		DRILLING/CO...	
CODELL	2/7/2017	P&A		PLUG AND AB...	

Casing Strings

Surface, 472.0ftKB						
Casing Description	Run Date	OD (in)	Wt/Len (lb/ft)	Grade	Top, MD (ft)	MD (ftKB)
Surface	11/11/2007	8 5/8	24.00	J-55	0.0	472.0

Production, 6,916.0ftKB

Casing Description	Run Date	OD (in)	Wt/Len (lb/ft)	Grade	Top, MD (ft)	MD (ftKB)
Production	11/14/2007	4 1/2	11.60	M-80	0.0	6,916.0

Cement

Description	Top Depth (ftKB)	Bottom Depth (ftKB)
Surface Casing Cement	13.0	472.0
Production Casing Cement	1,882.0	6,916.0
Dump Bail	6,509.0	6,529.0
Cement Squeeze	1,350.0	1,850.0
Cement Plug	1,752.0	1,850.0
Cement Plug	1,611.0	1,750.0
Balance Plug	292.0	687.0
Cement Plug	13.0	292.0

Tubing Strings

Tubing Description	Run Date	String...	ID (in)	Wt (lb/ft)	Grade	Len (ft)	Set De...
Tubing - Production	2/13/2008	2 3/8	2.00	4.70	J-55	6,753.90	

Other In Hole

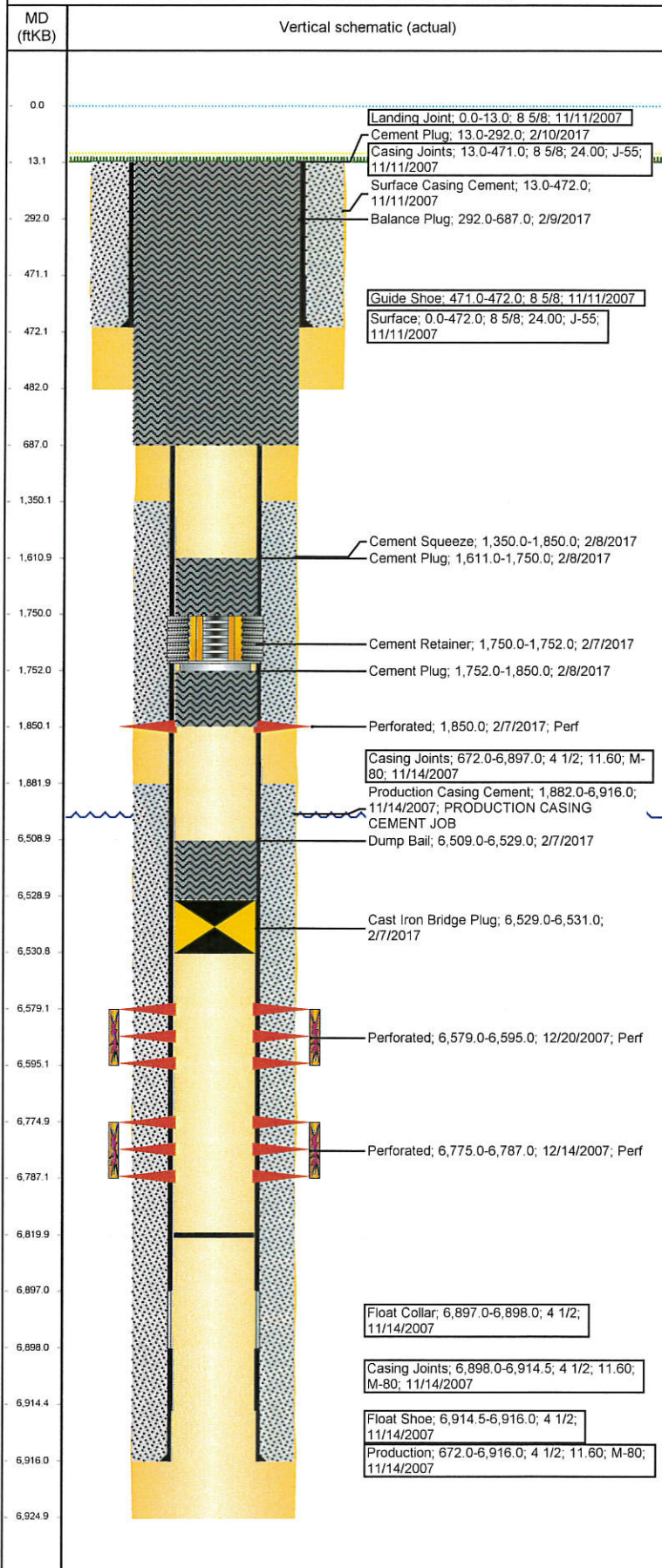
Run Date	Des	OD (in)	Top (ftKB)	Btm (ftKB)
2/7/2017	Cast Iron Bridge Plug	3.99	6,529.0	6,531.0
2/7/2017	Cement Retainer	3.99	1,750.0	1,752.0

Logs

Date	Type	Top, MD (ftKB)	Btm, MD (ftKB)
11/14/2007	COMPENSATED DENSITY	2,600.0	6,928.0
11/14/2007	INDUCTION	472.0	6,928.0
11/14/2007	GR/DIL/COMP/COMP/SP/GAURD/CALIPER	500.0	6,925.0
12/14/2007	CBL/CCL/GR	1,760.0	6,868.0
12/22/2016	GYRO	0.0	6,698.0

Well Name: WILMOTH C14-19

VERTICAL - ORIGINAL HOLE, 4/4/2017 9:39:36 AM



Perforation Data

Linked Zone	Brch/St g	Sum of Entered Shot Total	Top (ftKB)	Btm (ftKB)	Date
NIOBRARA, ORIGINAL HOLE		4	1,850.00	1,850.00	2/7/2017
CODELL, ORIGINAL HOLE		64	6,579.00	6,595.00	12/20/2007
		48	6,775.00	6,787.00	12/14/2007
Total (Sum)		116			

Stimulation Intervals

Start Date 12/20/2007	Primary Job Type DRILLING/COMPLETION - ORIGINAL	
Technical Result Success	Tech Result Details According to Plan	Tech Result Note
Comment (CODELL): PROBLEMS WITH TUB BYPASS WHEN STARTING ACID AND MARKING FLUSH. OVERFLUSHED 3.25 BBLS TO COMPENSATE AND GET ACID AT CORRECT DEPTH. (PLANNED OVERFLUSH 2.0 BBLS). GOT 6.5% (12 GALLONS) AHEAD ON GEL, LET USAGE GAIN TO MAINTAIN DESIRED VISCOSITY.		
Start Date 12/20/2007	Primary Job Type DRILLING/COMPLETION - ORIGINAL	
Technical Result Success	Tech Result Details According to Plan	Tech Result Note
Comment (NIOBRARA): GOT 2.9% GALLONS AHEAD ON GEL (14 GALLONS) BUT MADE NO CHANGES TO MAINTAIN DESIRED VISCOSITY.		