



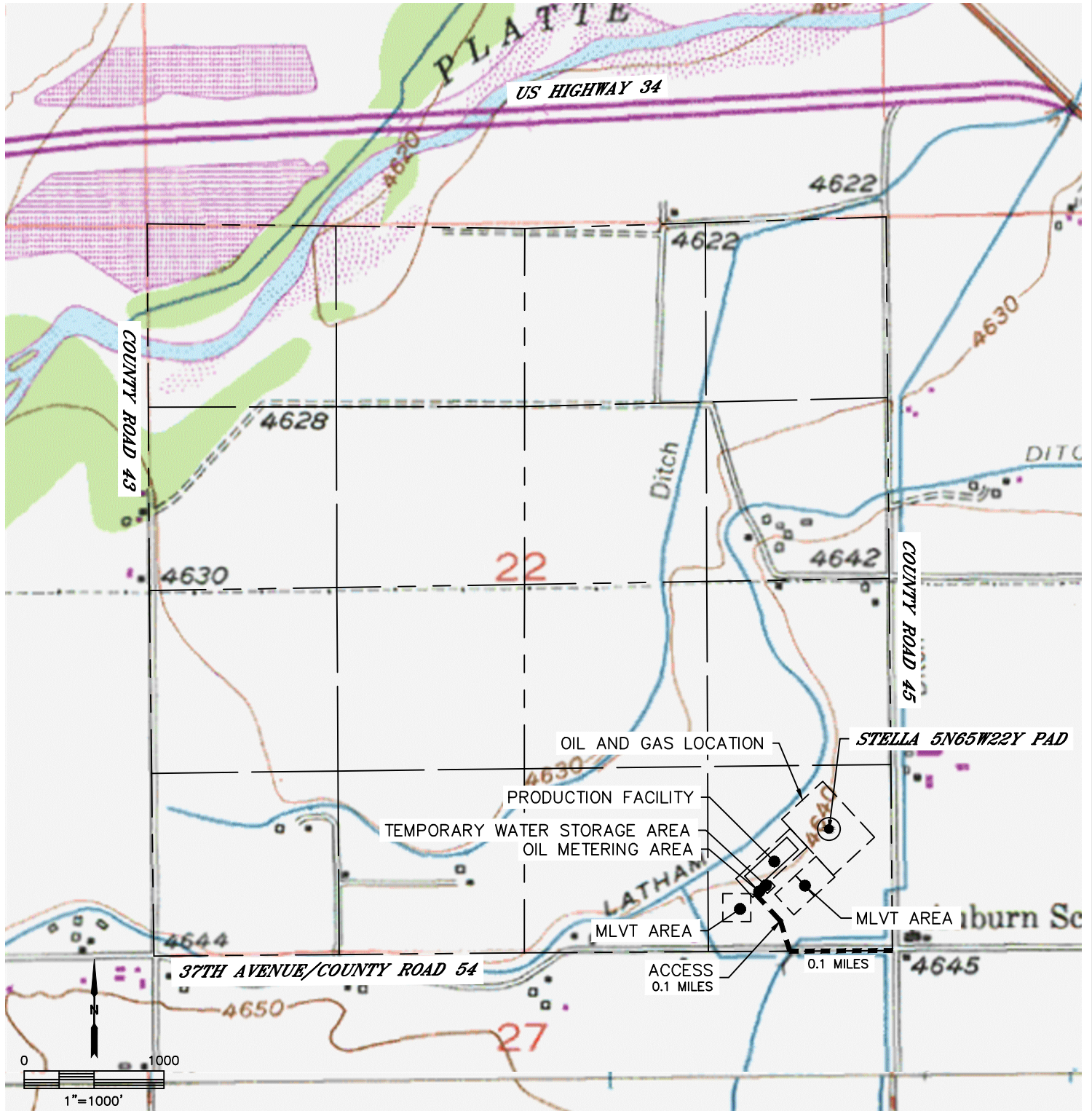
Lat40°, Inc. 6250 W. 10th Street, Unit 2, Greeley, CO 970-515-5294

ACCESS ROAD MAP

STELLA 5N65W22 1-4 PAD

SECTION: 22
TOWNSHIP: 5N
RANGE: 65W
6TH. P.M.
WELD COUNTY, CO

DRIVING DIRECTIONS TO STELLA 5N65W22Y PAD
FROM THE INTERSECTION OF 37TH AVENUE AND COUNTY ROAD 45, HEAD WEST ON 37TH AVENUE FOR 0.1 MILES TO AN EXISTING ACCESS TO THE NORTH. GO NORTH/NORTHWEST ON THE EXISTING ACCESS FOR 0.1 MILES TO PROPOSED DRILL PAD.





Lat40°, Inc. 6250 W. 10th Street, Unit 2, Greeley, CO 970-515-5294

ACCESS ROAD MAP

STELLA 5N65W22 1-4 PAD

SECTION: 22
TOWNSHIP: 5N
RANGE: 65W
6TH. P.M.
WELD COUNTY, CO

