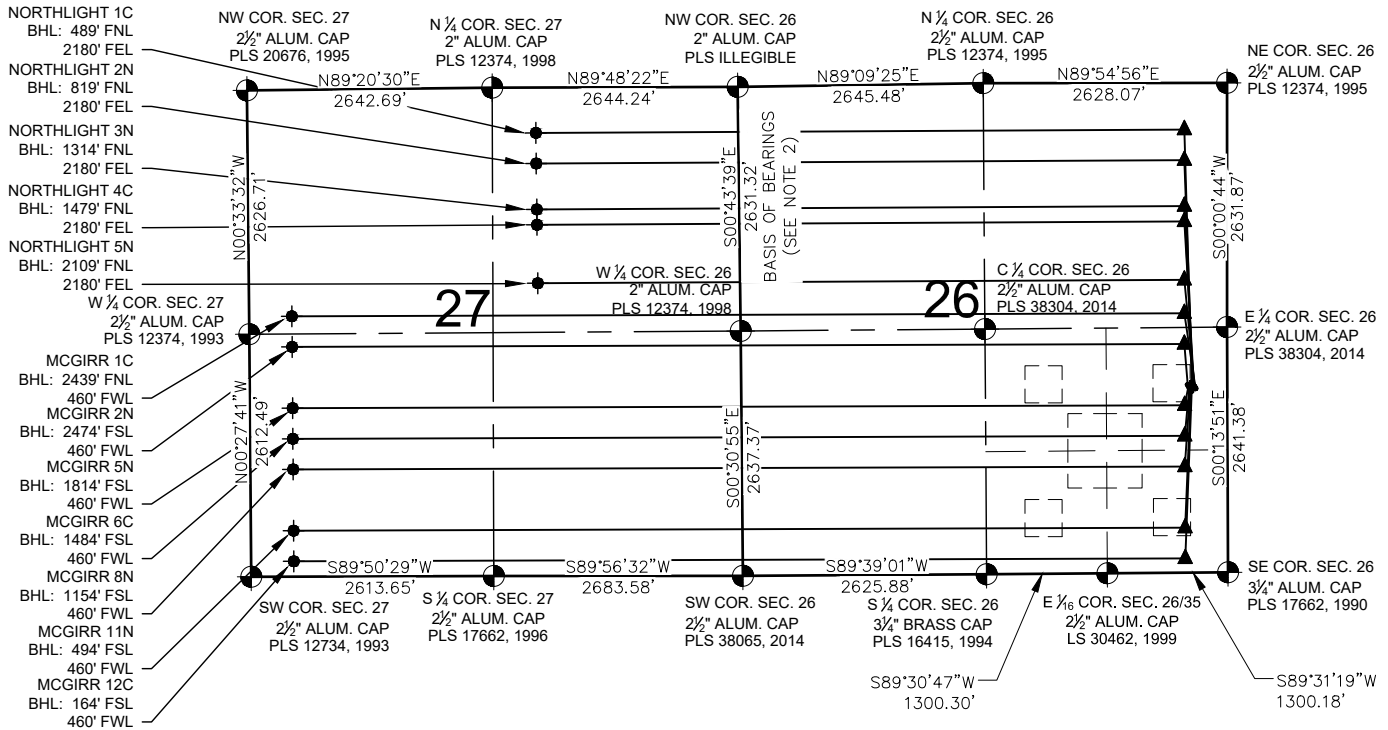


MCGIRR 26-L PAD MULTI-WELL PLAN



NOTES:

- NORTHLIGHT 1C TO BE AT 2051' FSL & 384' FEL.
- BOTTOM HOLE AT 489' FNL & 2180' FEL, SEC. 27
- NORTHLIGHT 2N TO BE AT 2038' FSL & 375' FEL.
- BOTTOM HOLE AT 819' FNL & 2180' FEL, SEC. 27
- NORTHLIGHT 3N TO BE AT 2024' FSL & 367' FEL.
- BOTTOM HOLE AT 1314' FNL & 2180' FEL, SEC. 27
- NORTHLIGHT 4C TO BE AT 2011' FSL & 358' FEL.
- BOTTOM HOLE AT 1479' FNL & 2180' FEL, SEC. 27
- NORTHLIGHT 5N TO BE AT 1997' FSL & 350' FEL.
- BOTTOM HOLE AT 2109' FNL & 2180' FEL, SEC. 27
- MCGIRR 1C TO BE AT 1984' FSL & 341' FEL.
- BOTTOM HOLE AT 2439' FNL & 460' FWL, SEC. 27
- MCGIRR 2N TO BE AT 2025' FSL & 426' FEL.
- BOTTOM HOLE AT 2474' FSL & 460' FWL, SEC. 27
- MCGIRR 5N TO BE AT 2011' FSL & 418' FEL.
- BOTTOM HOLE AT 1814' FSL & 460' FWL, SEC. 27
- MCGIRR 6C TO BE AT 1998' FSL & 409' FEL.
- BOTTOM HOLE AT 1484' FSL & 460' FWL, SEC. 27
- MCGIRR 8N TO BE AT 1984' FSL & 400' FEL.
- BOTTOM HOLE AT 1154' FSL & 460' FWL, SEC. 27
- MCGIRR 11N TO BE AT 1971' FSL & 392' FEL.
- BOTTOM HOLE AT 494' FSL & 460' FWL, SEC. 27
- MCGIRR 12C TO BE AT 1957' FSL & 383' FEL.
- BOTTOM HOLE AT 164' FSL & 460' FWL, SEC. 27

LEGEND

- = EXISTING MONUMENT
- = CALCULATED POSITION
- = PROPOSED WELL
- ◆ = EXISTING WELL
- ✦ = BOTTOM HOLE
- ▲ = LANDING POINT
- LP = LANDING POINT
- BHL = BOTTOM HOLE LOCATION

NOTES:

- THIS FIELD SURVEY CONFORMS TO THE MINIMUM STANDARDS SET BY THE C.O.G.C.C., RULE NO. 215
- BEARINGS AND DISTANCE SHOWN HEREON ARE GRID AND BASED ON THE COLORADO STATE PLANE COORDINATE SYSTEM, NAD 83/2011 BETWEEN MONUMENTS AS LABELED HEREON AND ELEVATIONS SHOWN ARE NAVD 88, AS DERIVED BY GPS OBSERVATIONS.
- GRID DISTANCES ARE SHOWN, AS MEASURED IN THE FIELD, WITH TIES TO WELLS MEASURED PERPENDICULAR TO SECTION LINES.

PREPARED BY:



7535 Hilltop Circle
Denver, CO 80221
(303) 928-7128
www.ascentgeomatics.com

FIELD DATE:
03-14-17

DRAWING DATE:
03-21-17

BY:
IJM

CHECKED BY:
CSG

SITE NAME:

MCGIRR 26-L PAD

SURFACE LOCATION:

NE 1/4 SE 1/4 SEC. 26, T5N, R68W, 6TH P.M.
LARIMER COUNTY, COLORADO

PREPARED FOR:

