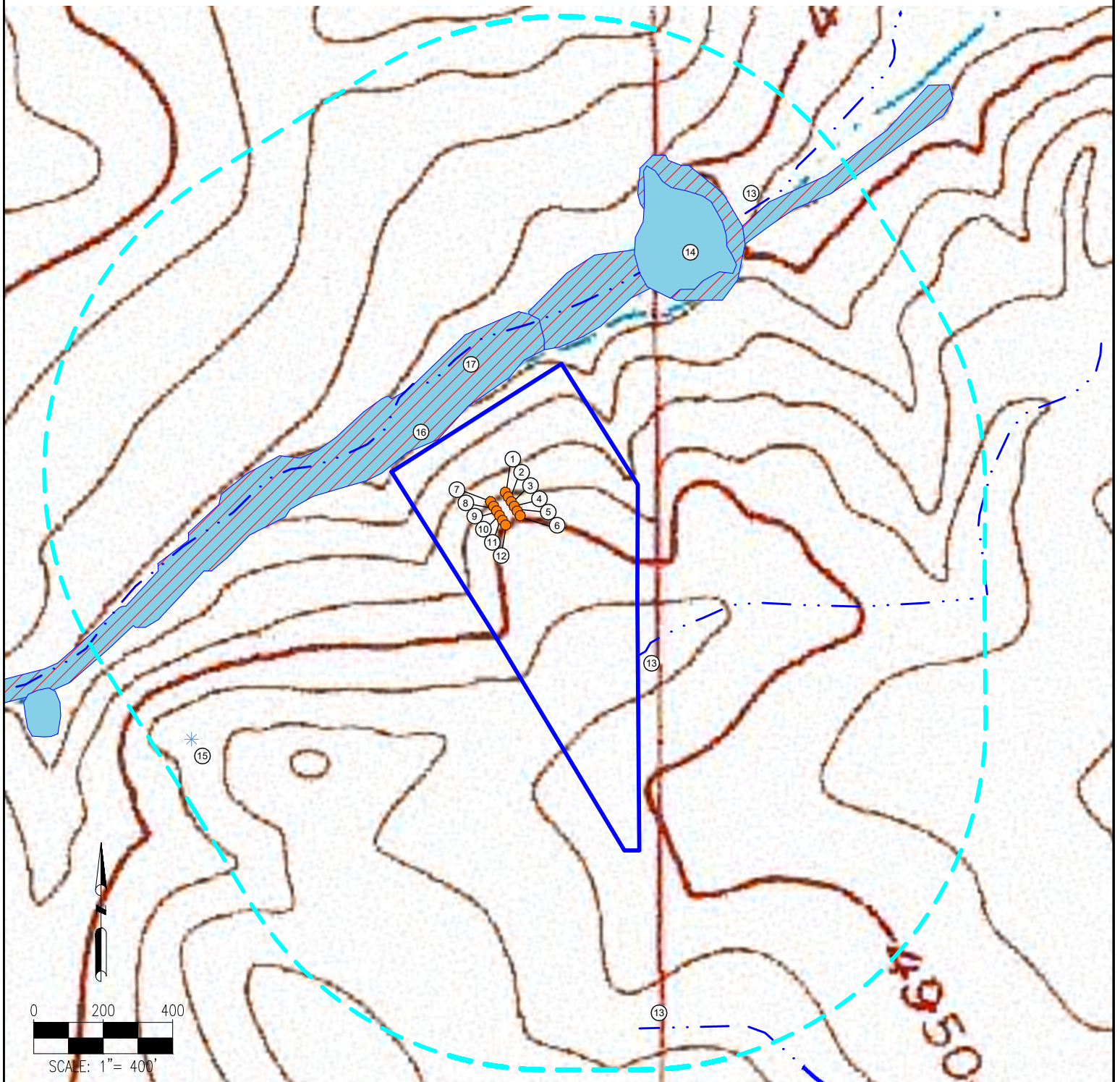


# MCGIRR 26-L PAD HYDROLOGY MAP



MEASUREMENTS ARE MADE FROM THE NEAREST EDGE OF THE DISTURBANCE AREA.

1. NORTHLIGHT 1C
2. NORTHLIGHT 2N
3. NORTHLIGHT 3N
4. NORTHLIGHT 4C
5. NORTHLIGHT 5N
6. MCGIRR 1C

7. MCGIRR 2N
8. MCGIRR 5N
9. MCGIRR 6C
10. MCGIRR 8N
11. MCGIRR 11N
12. MCGIRR 12C

13. DITCHES ARE  $\pm 684'$  NE,  $\pm 1'$  E,  $\pm 881'$  S
14. POND IS  $\pm 332'$  NE
15. PIVOT POINT IS  $\pm 898'$  SW
16. WETLANDS ARE  $\pm 7'$  NW
17. SEASONAL STREAM IS  $\pm 105'$  NW

## LEGEND:

- = PROPOSED WELL
- \* = PIVOT POINT
- = DITCH
- = POND
- = WETLANDS
- = DISTURBANCE AREA
- = 1000' RADIUS
- = STREAM

DISCLAIMER:  
THIS PLOT DOES NOT REPRESENT A MONUMENTED LAND SURVEY AND SHOULD NOT BE RELIED UPON TO DETERMINE BOUNDARY LINES, PROPERTY OWNERSHIP OR OTHER PROPERTY INTERESTS. PARCEL LINES, IF DEPICTED HAVE NOT BEEN FIELD VERIFIED AND MAY BE BASED UPON PUBLICLY AVAILABLE DATA THAT ALSO HAS NOT BEEN INDEPENDENTLY VERIFIED.

DATA SOURCE:  
TOPO MAP: USGS  
NHD: USGS  
  
PUBLICLY AVAILABLE DATA SOURCES HAVE NOT BEEN INDEPENDENTLY VERIFIED BY PFS.

FIELD DATE:  
03-14-17

DRAWING DATE:  
03-17-17

BY:  
CSG

CHECKED BY:  
IJM

SITE NAME:  
MCGIRR 26-L PAD

SURFACE LOCATION:  
NE 1/4 SE 1/4 SEC. 26, T5N, R68W, 6TH P.M.  
LARIMER COUNTY, COLORADO

PREPARED FOR: