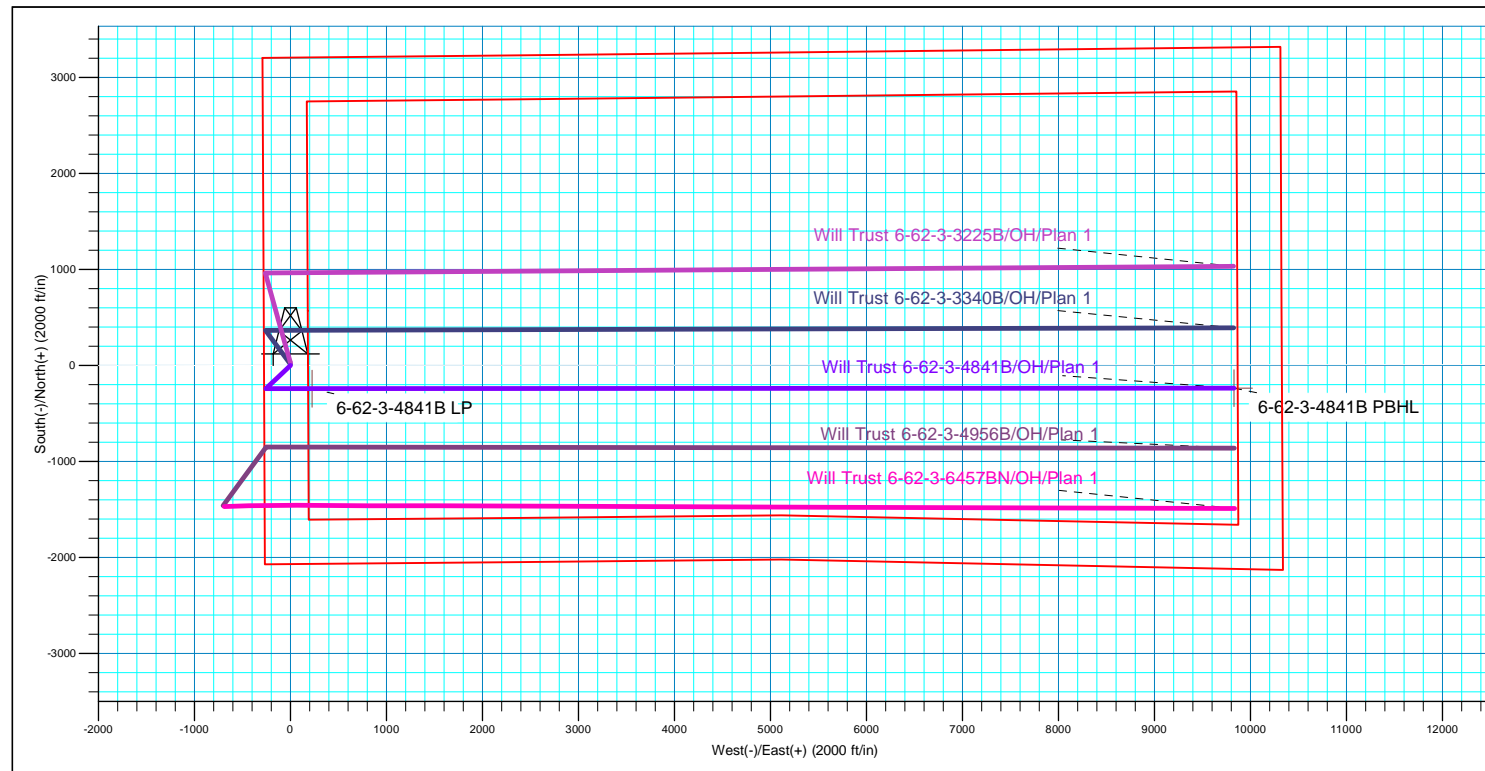
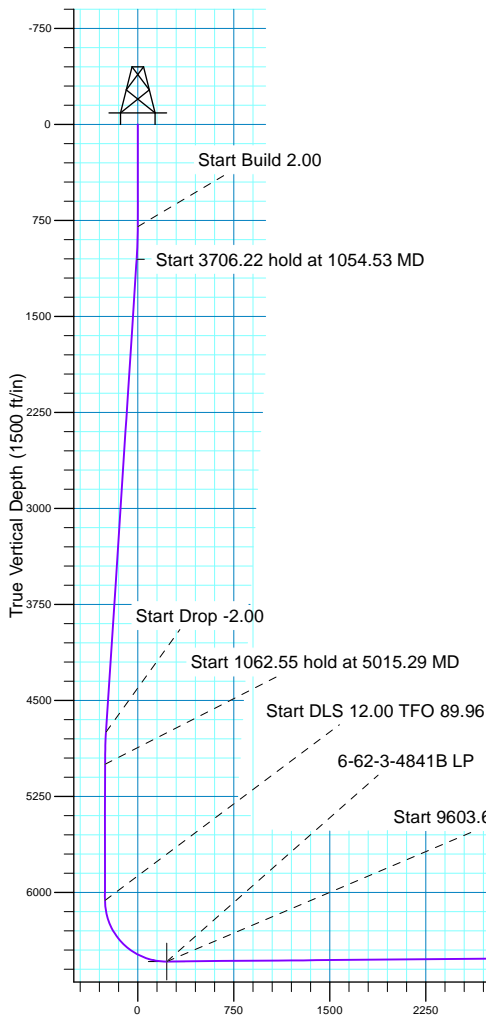



SECTION DETAILS

MD	Inc	Azi	TVD	+N/-S	+E/-W	Dleg	TFace	VSect
0.00	0.00	0.000	0.00	0.00	0.00	0.00	0.00	0.00
800.00	0.00	0.000	800.00	0.00	0.00	0.00	0.00	0.00
1054.53	5.09	226.599	1054.20	-7.76	-8.21	2.00	226.60	-8.22
4760.75	5.09	226.599	4745.80	-233.73	-247.15	0.00	0.00	-247.30
5015.29	0.00	0.000	5000.00	-241.49	-255.36	2.00	180.00	-255.52
6077.84	0.00	0.000	6062.55	-241.49	-255.36	0.00	0.00	-255.52
6832.06	90.51	89.962	6540.00	-241.17	226.33	12.00	89.96	226.17
16435.76	90.51	89.962	6455.00	-234.83	9829.65	0.00	0.00	9829.49

WELL DETAILS: Will Trust 6-62-3-4841B

		GL 4820' & KB 20' @ 4840.00ft		4820.00	Longitude
+N/-S	+E/-W	Northing	Easting	Latitude	
0.00	0.00	1432505.53	3328909.33	40° 30' 52.581 N	104° 19' 1.222 W



Vertical Section at 89.962° (1500 ft/in)

6-62-3-4841B PBHL



Bill Barrett Corporation

Bill Barrett Corp.

Weld County, CO NAD 83

Will Trust 6-62-3_2 NWSW Pad

Will Trust 6-62-3-4841B

OH

Plan: Plan 1

Standard Planning Report

14 March, 2017



Scientific Drilling

www.scientificdrilling.com



Database:	Casper District	Local Co-ordinate Reference:	Well Will Trust 6-62-3-4841B
Company:	Bill Barrett Corp.	TVD Reference:	GL 4820' & KB 20' @ 4840.00ft
Project:	Weld County, CO NAD 83	MD Reference:	GL 4820' & KB 20' @ 4840.00ft
Site:	Will Trust 6-62-3_2 NWSW Pad	North Reference:	True
Well:	Will Trust 6-62-3-4841B	Survey Calculation Method:	Minimum Curvature
Wellbore:	OH		
Design:	Plan 1		

Project	Weld County, CO NAD 83		
Map System:	US State Plane 1983	System Datum:	Mean Sea Level
Geo Datum:	North American Datum 1983		
Map Zone:	Colorado Northern Zone		

Site		Will Trust 6-62-3_2 NWSW Pad, Site Center : Will Trust 6-62-03-3225A2			
Site Position:		Northing:	1,432,534.69 usft	Latitude:	40° 30' 52.870 N
From:	Lat/Long	Easting:	3,328,908.95 usft	Longitude:	104° 19' 1.222 W
Position Uncertainty:	0.00 ft	Slot Radius:	13.200 in	Grid Convergence:	0.76

Well	Will Trust 6-62-3-4841B, 2069' FSL 275' FWL Sec 3 T6N R62W					
Well Position	+N/-S	-29.16 ft	Northing:	1,432,505.53 usft	Latitude:	40° 30' 52.581 N
	+E/-W	0.00 ft	Easting:	3,328,909.33 usft	Longitude:	104° 19' 1.222 W
Position Uncertainty		0.00 ft	Wellhead Elevation:	0.00 ft	Ground Level:	4,820.00 ft

Wellbore	OH				
Magnetics	Model Name	Sample Date	Declination (°)	Dip Angle (°)	Field Strength (nT)
	BGGM2016	3/14/2017	8.15	67.05	52,555

Design	Plan 1			
Audit Notes:				
Version:	Phase:	PLAN	Tie On Depth:	0.00
Vertical Section:	Depth From (TVD) (ft)	+N/-S (ft)	+E/-W (ft)	Direction (°)
	0.00	0.00	0.00	89.962

Plan Sections										
Measured Depth (ft)	Inclination (°)	Azimuth (°)	Vertical Depth (ft)	+N/-S (ft)	+E/-W (ft)	Dogleg Rate (°/100ft)	Build Rate (°/100ft)	Turn Rate (°/100ft)	TFO (°)	Target
0.00	0.00	0.000	0.00	0.00	0.00	0.00	0.00	0.00	0.00	
800.00	0.00	0.000	800.00	0.00	0.00	0.00	0.00	0.00	0.00	
1,054.53	5.09	226.599	1,054.20	-7.76	-8.21	2.00	2.00	0.00	226.60	
4,760.75	5.09	226.599	4,745.80	-233.73	-247.15	0.00	0.00	0.00	0.00	
5,015.29	0.00	0.000	5,000.00	-241.49	-255.36	2.00	-2.00	0.00	180.00	
6,077.84	0.00	0.000	6,062.55	-241.49	-255.36	0.00	0.00	0.00	0.00	
6,832.06	90.51	89.962	6,540.00	-241.17	226.33	12.00	12.00	11.93	89.96	
16,435.76	90.51	89.962	6,455.00	-234.83	9,829.65	0.00	0.00	0.00	0.00	6-62-3-4841B PBHL

Database:	Casper District	Local Co-ordinate Reference:	Well Will Trust 6-62-3-4841B
Company:	Bill Barrett Corp.	TVD Reference:	GL 4820' & KB 20' @ 4840.00ft
Project:	Weld County, CO NAD 83	MD Reference:	GL 4820' & KB 20' @ 4840.00ft
Site:	Will Trust 6-62-3_2 NWSW Pad	North Reference:	True
Well:	Will Trust 6-62-3-4841B	Survey Calculation Method:	Minimum Curvature
Wellbore:	OH		
Design:	Plan 1		

Planned Survey									
Measured Depth (ft)	Inclination (°)	Azimuth (°)	Vertical Depth (ft)	+N/-S (ft)	+E/-W (ft)	Vertical Section (ft)	Dogleg Rate (°/100ft)	Build Rate (°/100ft)	Turn Rate (°/100ft)
0.00	0.00	0.000	0.00	0.00	0.00	0.00	0.00	0.00	0.00
100.00	0.00	0.000	100.00	0.00	0.00	0.00	0.00	0.00	0.00
200.00	0.00	0.000	200.00	0.00	0.00	0.00	0.00	0.00	0.00
300.00	0.00	0.000	300.00	0.00	0.00	0.00	0.00	0.00	0.00
400.00	0.00	0.000	400.00	0.00	0.00	0.00	0.00	0.00	0.00
500.00	0.00	0.000	500.00	0.00	0.00	0.00	0.00	0.00	0.00
600.00	0.00	0.000	600.00	0.00	0.00	0.00	0.00	0.00	0.00
700.00	0.00	0.000	700.00	0.00	0.00	0.00	0.00	0.00	0.00
800.00	0.00	0.000	800.00	0.00	0.00	0.00	0.00	0.00	0.00
Start Build 2.00									
900.00	2.00	226.599	899.98	-1.20	-1.27	-1.27	2.00	2.00	0.00
1,000.00	4.00	226.599	999.84	-4.79	-5.07	-5.07	2.00	2.00	0.00
1,054.53	5.09	226.599	1,054.20	-7.76	-8.21	-8.22	2.00	2.00	0.00
Start 3706.22 hold at 1054.53 MD									
1,100.00	5.09	226.599	1,099.49	-10.54	-11.14	-11.15	0.00	0.00	0.00
1,200.00	5.09	226.599	1,199.09	-16.63	-17.59	-17.60	0.00	0.00	0.00
1,300.00	5.09	226.599	1,298.70	-22.73	-24.04	-24.05	0.00	0.00	0.00
1,400.00	5.09	226.599	1,398.30	-28.83	-30.48	-30.50	0.00	0.00	0.00
1,500.00	5.09	226.599	1,497.91	-34.92	-36.93	-36.95	0.00	0.00	0.00
1,600.00	5.09	226.599	1,597.51	-41.02	-43.38	-43.40	0.00	0.00	0.00
1,700.00	5.09	226.599	1,697.12	-47.12	-49.82	-49.85	0.00	0.00	0.00
1,800.00	5.09	226.599	1,796.72	-53.21	-56.27	-56.31	0.00	0.00	0.00
1,900.00	5.09	226.599	1,896.33	-59.31	-62.72	-62.76	0.00	0.00	0.00
2,000.00	5.09	226.599	1,995.94	-65.41	-69.16	-69.21	0.00	0.00	0.00
2,100.00	5.09	226.599	2,095.54	-71.50	-75.61	-75.66	0.00	0.00	0.00
2,200.00	5.09	226.599	2,195.15	-77.60	-82.06	-82.11	0.00	0.00	0.00
2,300.00	5.09	226.599	2,294.75	-83.70	-88.51	-88.56	0.00	0.00	0.00
2,400.00	5.09	226.599	2,394.36	-89.79	-94.95	-95.01	0.00	0.00	0.00
2,500.00	5.09	226.599	2,493.96	-95.89	-101.40	-101.46	0.00	0.00	0.00
2,600.00	5.09	226.599	2,593.57	-101.99	-107.85	-107.91	0.00	0.00	0.00
2,700.00	5.09	226.599	2,693.17	-108.09	-114.29	-114.36	0.00	0.00	0.00
2,800.00	5.09	226.599	2,792.78	-114.18	-120.74	-120.82	0.00	0.00	0.00
2,900.00	5.09	226.599	2,892.39	-120.28	-127.19	-127.27	0.00	0.00	0.00
3,000.00	5.09	226.599	2,991.99	-126.38	-133.63	-133.72	0.00	0.00	0.00
3,100.00	5.09	226.599	3,091.60	-132.47	-140.08	-140.17	0.00	0.00	0.00
3,200.00	5.09	226.599	3,191.20	-138.57	-146.53	-146.62	0.00	0.00	0.00
3,300.00	5.09	226.599	3,290.81	-144.67	-152.98	-153.07	0.00	0.00	0.00
3,400.00	5.09	226.599	3,390.41	-150.76	-159.42	-159.52	0.00	0.00	0.00
3,500.00	5.09	226.599	3,490.02	-156.86	-165.87	-165.97	0.00	0.00	0.00
3,600.00	5.09	226.599	3,589.62	-162.96	-172.32	-172.42	0.00	0.00	0.00
3,700.00	5.09	226.599	3,689.23	-169.05	-178.76	-178.88	0.00	0.00	0.00
3,800.00	5.09	226.599	3,788.84	-175.15	-185.21	-185.33	0.00	0.00	0.00
3,900.00	5.09	226.599	3,888.44	-181.25	-191.66	-191.78	0.00	0.00	0.00
4,000.00	5.09	226.599	3,988.05	-187.34	-198.10	-198.23	0.00	0.00	0.00
4,100.00	5.09	226.599	4,087.65	-193.44	-204.55	-204.68	0.00	0.00	0.00
4,200.00	5.09	226.599	4,187.26	-199.54	-211.00	-211.13	0.00	0.00	0.00
4,300.00	5.09	226.599	4,286.86	-205.63	-217.44	-217.58	0.00	0.00	0.00
4,400.00	5.09	226.599	4,386.47	-211.73	-223.89	-224.03	0.00	0.00	0.00
4,500.00	5.09	226.599	4,486.07	-217.83	-230.34	-230.48	0.00	0.00	0.00
4,600.00	5.09	226.599	4,585.68	-223.92	-236.79	-236.93	0.00	0.00	0.00
4,700.00	5.09	226.599	4,685.29	-230.02	-243.23	-243.39	0.00	0.00	0.00
4,760.75	5.09	226.599	4,745.80	-233.73	-247.15	-247.30	0.00	0.00	0.00
Start Drop -2.00									

Database:	Casper District	Local Co-ordinate Reference:	Well Will Trust 6-62-3-4841B
Company:	Bill Barrett Corp.	TVD Reference:	GL 4820' & KB 20' @ 4840.00ft
Project:	Weld County, CO NAD 83	MD Reference:	GL 4820' & KB 20' @ 4840.00ft
Site:	Will Trust 6-62-3_2 NWSW Pad	North Reference:	True
Well:	Will Trust 6-62-3-4841B	Survey Calculation Method:	Minimum Curvature
Wellbore:	OH		
Design:	Plan 1		

Planned Survey									
Measured Depth (ft)	Inclination (°)	Azimuth (°)	Vertical Depth (ft)	+N/-S (ft)	+E/-W (ft)	Vertical Section (ft)	Dogleg Rate (°/100ft)	Build Rate (°/100ft)	Turn Rate (°/100ft)
4,800.00	4.31	226.599	4,784.91	-235.93	-249.49	-249.64	2.00	-2.00	0.00
4,900.00	2.31	226.599	4,884.74	-239.90	-253.67	-253.83	2.00	-2.00	0.00
5,000.00	0.31	226.599	4,984.71	-241.46	-255.33	-255.49	2.00	-2.00	0.00
5,015.29	0.00	0.000	5,000.00	-241.49	-255.36	-255.52	2.00	-2.00	0.00
Start 1062.55 hold at 5015.29 MD									
5,100.00	0.00	0.000	5,084.71	-241.49	-255.36	-255.52	0.00	0.00	0.00
5,200.00	0.00	0.000	5,184.71	-241.49	-255.36	-255.52	0.00	0.00	0.00
5,300.00	0.00	0.000	5,284.71	-241.49	-255.36	-255.52	0.00	0.00	0.00
5,400.00	0.00	0.000	5,384.71	-241.49	-255.36	-255.52	0.00	0.00	0.00
5,500.00	0.00	0.000	5,484.71	-241.49	-255.36	-255.52	0.00	0.00	0.00
5,600.00	0.00	0.000	5,584.71	-241.49	-255.36	-255.52	0.00	0.00	0.00
5,700.00	0.00	0.000	5,684.71	-241.49	-255.36	-255.52	0.00	0.00	0.00
5,800.00	0.00	0.000	5,784.71	-241.49	-255.36	-255.52	0.00	0.00	0.00
5,900.00	0.00	0.000	5,884.71	-241.49	-255.36	-255.52	0.00	0.00	0.00
6,000.00	0.00	0.000	5,984.71	-241.49	-255.36	-255.52	0.00	0.00	0.00
6,077.84	0.00	0.000	6,062.55	-241.49	-255.36	-255.52	0.00	0.00	0.00
Start DLS 12.00 TFO 89.96									
6,100.00	2.66	89.962	6,084.70	-241.49	-254.85	-255.01	12.00	12.00	0.00
6,200.00	14.66	89.962	6,183.38	-241.48	-239.82	-239.98	12.00	12.00	0.00
6,300.00	26.66	89.962	6,276.78	-241.46	-204.60	-204.76	12.00	12.00	0.00
6,400.00	38.66	89.962	6,360.82	-241.42	-150.73	-150.90	12.00	12.00	0.00
6,500.00	50.66	89.962	6,431.82	-241.37	-80.57	-80.73	12.00	12.00	0.00
6,600.00	62.66	89.962	6,486.68	-241.32	2.81	2.65	12.00	12.00	0.00
6,700.00	74.66	89.962	6,523.00	-241.26	95.79	95.63	12.00	12.00	0.00
6,800.00	86.66	89.962	6,539.20	-241.19	194.28	194.12	12.00	12.00	0.00
6,832.06	90.51	89.962	6,540.00	-241.17	226.33	226.17	12.00	12.00	0.00
Start 9603.69 hold at 6832.06 MD									
6,900.00	90.51	89.962	6,539.40	-241.13	294.26	294.10	0.00	0.00	0.00
7,000.00	90.51	89.962	6,538.51	-241.06	394.26	394.10	0.00	0.00	0.00
7,100.00	90.51	89.962	6,537.62	-240.99	494.26	494.10	0.00	0.00	0.00
7,200.00	90.51	89.962	6,536.74	-240.93	594.25	594.09	0.00	0.00	0.00
7,300.00	90.51	89.962	6,535.85	-240.86	694.25	694.09	0.00	0.00	0.00
7,400.00	90.51	89.962	6,534.97	-240.80	794.24	794.08	0.00	0.00	0.00
7,500.00	90.51	89.962	6,534.08	-240.73	894.24	894.08	0.00	0.00	0.00
7,600.00	90.51	89.962	6,533.20	-240.66	994.24	994.08	0.00	0.00	0.00
7,700.00	90.51	89.962	6,532.31	-240.60	1,094.23	1,094.07	0.00	0.00	0.00
7,800.00	90.51	89.962	6,531.43	-240.53	1,194.23	1,194.07	0.00	0.00	0.00
7,900.00	90.51	89.962	6,530.54	-240.47	1,294.22	1,294.06	0.00	0.00	0.00
8,000.00	90.51	89.962	6,529.66	-240.40	1,394.22	1,394.06	0.00	0.00	0.00
8,100.00	90.51	89.962	6,528.77	-240.33	1,494.22	1,494.06	0.00	0.00	0.00
8,200.00	90.51	89.962	6,527.89	-240.27	1,594.21	1,594.05	0.00	0.00	0.00
8,300.00	90.51	89.962	6,527.00	-240.20	1,694.21	1,694.05	0.00	0.00	0.00
8,400.00	90.51	89.962	6,526.12	-240.14	1,794.20	1,794.04	0.00	0.00	0.00
8,500.00	90.51	89.962	6,525.23	-240.07	1,894.20	1,894.04	0.00	0.00	0.00
8,600.00	90.51	89.962	6,524.35	-240.00	1,994.20	1,994.04	0.00	0.00	0.00
8,700.00	90.51	89.962	6,523.46	-239.94	2,094.19	2,094.03	0.00	0.00	0.00
8,800.00	90.51	89.962	6,522.58	-239.87	2,194.19	2,194.03	0.00	0.00	0.00
8,900.00	90.51	89.962	6,521.69	-239.81	2,294.18	2,294.02	0.00	0.00	0.00
9,000.00	90.51	89.962	6,520.81	-239.74	2,394.18	2,394.02	0.00	0.00	0.00
9,100.00	90.51	89.962	6,519.92	-239.67	2,494.18	2,494.02	0.00	0.00	0.00
9,200.00	90.51	89.962	6,519.04	-239.61	2,594.17	2,594.01	0.00	0.00	0.00
9,300.00	90.51	89.962	6,518.15	-239.54	2,694.17	2,694.01	0.00	0.00	0.00
9,400.00	90.51	89.962	6,517.27	-239.48	2,794.16	2,794.01	0.00	0.00	0.00

Database:	Casper District	Local Co-ordinate Reference:	Well Will Trust 6-62-3-4841B
Company:	Bill Barrett Corp.	TVD Reference:	GL 4820' & KB 20' @ 4840.00ft
Project:	Weld County, CO NAD 83	MD Reference:	GL 4820' & KB 20' @ 4840.00ft
Site:	Will Trust 6-62-3_2 NWSW Pad	North Reference:	True
Well:	Will Trust 6-62-3-4841B	Survey Calculation Method:	Minimum Curvature
Wellbore:	OH		
Design:	Plan 1		

Planned Survey									
Measured Depth (ft)	Inclination (°)	Azimuth (°)	Vertical Depth (ft)	+N/-S (ft)	+E/-W (ft)	Vertical Section (ft)	Dogleg Rate (°/100ft)	Build Rate (°/100ft)	Turn Rate (°/100ft)
9,500.00	90.51	89.962	6,516.38	-239.41	2,894.16	2,894.00	0.00	0.00	0.00
9,600.00	90.51	89.962	6,515.50	-239.34	2,994.16	2,994.00	0.00	0.00	0.00
9,700.00	90.51	89.962	6,514.61	-239.28	3,094.15	3,093.99	0.00	0.00	0.00
9,800.00	90.51	89.962	6,513.73	-239.21	3,194.15	3,193.99	0.00	0.00	0.00
9,900.00	90.51	89.962	6,512.84	-239.15	3,294.15	3,293.99	0.00	0.00	0.00
10,000.00	90.51	89.962	6,511.96	-239.08	3,394.14	3,393.98	0.00	0.00	0.00
10,100.00	90.51	89.962	6,511.07	-239.01	3,494.14	3,493.98	0.00	0.00	0.00
10,200.00	90.51	89.962	6,510.19	-238.95	3,594.13	3,593.97	0.00	0.00	0.00
10,300.00	90.51	89.962	6,509.30	-238.88	3,694.13	3,693.97	0.00	0.00	0.00
10,400.00	90.51	89.962	6,508.42	-238.82	3,794.13	3,793.97	0.00	0.00	0.00
10,500.00	90.51	89.962	6,507.53	-238.75	3,894.12	3,893.96	0.00	0.00	0.00
10,600.00	90.51	89.962	6,506.65	-238.68	3,994.12	3,993.96	0.00	0.00	0.00
10,700.00	90.51	89.962	6,505.76	-238.62	4,094.11	4,093.95	0.00	0.00	0.00
10,800.00	90.51	89.962	6,504.88	-238.55	4,194.11	4,193.95	0.00	0.00	0.00
10,900.00	90.51	89.962	6,503.99	-238.48	4,294.11	4,293.95	0.00	0.00	0.00
11,000.00	90.51	89.962	6,503.11	-238.42	4,394.10	4,393.94	0.00	0.00	0.00
11,100.00	90.51	89.962	6,502.22	-238.35	4,494.10	4,493.94	0.00	0.00	0.00
11,200.00	90.51	89.962	6,501.34	-238.29	4,594.09	4,593.93	0.00	0.00	0.00
11,300.00	90.51	89.962	6,500.45	-238.22	4,694.09	4,693.93	0.00	0.00	0.00
11,400.00	90.51	89.962	6,499.57	-238.15	4,794.09	4,793.93	0.00	0.00	0.00
11,500.00	90.51	89.962	6,498.68	-238.09	4,894.08	4,893.92	0.00	0.00	0.00
11,600.00	90.51	89.962	6,497.80	-238.02	4,994.08	4,993.92	0.00	0.00	0.00
11,700.00	90.51	89.962	6,496.91	-237.96	5,094.07	5,093.92	0.00	0.00	0.00
11,800.00	90.51	89.962	6,496.03	-237.89	5,194.07	5,193.91	0.00	0.00	0.00
11,900.00	90.51	89.962	6,495.14	-237.82	5,294.07	5,293.91	0.00	0.00	0.00
12,000.00	90.51	89.962	6,494.26	-237.76	5,394.06	5,393.90	0.00	0.00	0.00
12,100.00	90.51	89.962	6,493.37	-237.69	5,494.06	5,493.90	0.00	0.00	0.00
12,200.00	90.51	89.962	6,492.49	-237.63	5,594.05	5,593.90	0.00	0.00	0.00
12,300.00	90.51	89.962	6,491.60	-237.56	5,694.05	5,693.89	0.00	0.00	0.00
12,400.00	90.51	89.962	6,490.72	-237.49	5,794.05	5,793.89	0.00	0.00	0.00
12,500.00	90.51	89.962	6,489.83	-237.43	5,894.04	5,893.88	0.00	0.00	0.00
12,600.00	90.51	89.962	6,488.95	-237.36	5,994.04	5,993.88	0.00	0.00	0.00
12,700.00	90.51	89.962	6,488.06	-237.30	6,094.03	6,093.88	0.00	0.00	0.00
12,800.00	90.51	89.962	6,487.18	-237.23	6,194.03	6,193.87	0.00	0.00	0.00
12,900.00	90.51	89.962	6,486.29	-237.16	6,294.03	6,293.87	0.00	0.00	0.00
13,000.00	90.51	89.962	6,485.41	-237.10	6,394.02	6,393.86	0.00	0.00	0.00
13,100.00	90.51	89.962	6,484.52	-237.03	6,494.02	6,493.86	0.00	0.00	0.00
13,200.00	90.51	89.962	6,483.64	-236.97	6,594.02	6,593.86	0.00	0.00	0.00
13,300.00	90.51	89.962	6,482.75	-236.90	6,694.01	6,693.85	0.00	0.00	0.00
13,400.00	90.51	89.962	6,481.87	-236.83	6,794.01	6,793.85	0.00	0.00	0.00
13,500.00	90.51	89.962	6,480.98	-236.77	6,894.00	6,893.84	0.00	0.00	0.00
13,600.00	90.51	89.962	6,480.10	-236.70	6,994.00	6,993.84	0.00	0.00	0.00
13,700.00	90.51	89.962	6,479.21	-236.64	7,094.00	7,093.84	0.00	0.00	0.00
13,800.00	90.51	89.962	6,478.33	-236.57	7,193.99	7,193.83	0.00	0.00	0.00
13,900.00	90.51	89.962	6,477.44	-236.50	7,293.99	7,293.83	0.00	0.00	0.00
14,000.00	90.51	89.962	6,476.56	-236.44	7,393.98	7,393.83	0.00	0.00	0.00
14,100.00	90.51	89.962	6,475.67	-236.37	7,493.98	7,493.82	0.00	0.00	0.00
14,200.00	90.51	89.962	6,474.79	-236.31	7,593.98	7,593.82	0.00	0.00	0.00
14,300.00	90.51	89.962	6,473.90	-236.24	7,693.97	7,693.81	0.00	0.00	0.00
14,400.00	90.51	89.962	6,473.02	-236.17	7,793.97	7,793.81	0.00	0.00	0.00
14,500.00	90.51	89.962	6,472.13	-236.11	7,893.96	7,893.81	0.00	0.00	0.00
14,600.00	90.51	89.962	6,471.25	-236.04	7,993.96	7,993.80	0.00	0.00	0.00
14,700.00	90.51	89.962	6,470.36	-235.97	8,093.96	8,093.80	0.00	0.00	0.00
14,800.00	90.51	89.962	6,469.48	-235.91	8,193.95	8,193.79	0.00	0.00	0.00

Database:	Casper District	Local Co-ordinate Reference:	Well Will Trust 6-62-3-4841B
Company:	Bill Barrett Corp.	TVD Reference:	GL 4820' & KB 20' @ 4840.00ft
Project:	Weld County, CO NAD 83	MD Reference:	GL 4820' & KB 20' @ 4840.00ft
Site:	Will Trust 6-62-3_2 NWSW Pad	North Reference:	True
Well:	Will Trust 6-62-3-4841B	Survey Calculation Method:	Minimum Curvature
Wellbore:	OH		
Design:	Plan 1		

Planned Survey									
Measured Depth (ft)	Inclination (°)	Azimuth (°)	Vertical Depth (ft)	+N/-S (ft)	+E/-W (ft)	Vertical Section (ft)	Dogleg Rate (°/100ft)	Build Rate (°/100ft)	Turn Rate (°/100ft)
14,900.00	90.51	89.962	6,468.59	-235.84	8,293.95	8,293.79	0.00	0.00	0.00
15,000.00	90.51	89.962	6,467.71	-235.78	8,393.94	8,393.79	0.00	0.00	0.00
15,100.00	90.51	89.962	6,466.82	-235.71	8,493.94	8,493.78	0.00	0.00	0.00
15,200.00	90.51	89.962	6,465.94	-235.64	8,593.94	8,593.78	0.00	0.00	0.00
15,300.00	90.51	89.962	6,465.05	-235.58	8,693.93	8,693.77	0.00	0.00	0.00
15,400.00	90.51	89.962	6,464.17	-235.51	8,793.93	8,793.77	0.00	0.00	0.00
15,500.00	90.51	89.962	6,463.28	-235.45	8,893.92	8,893.77	0.00	0.00	0.00
15,600.00	90.51	89.962	6,462.40	-235.38	8,993.92	8,993.76	0.00	0.00	0.00
15,700.00	90.51	89.962	6,461.51	-235.31	9,093.92	9,093.76	0.00	0.00	0.00
15,800.00	90.51	89.962	6,460.63	-235.25	9,193.91	9,193.75	0.00	0.00	0.00
15,900.00	90.51	89.962	6,459.74	-235.18	9,293.91	9,293.75	0.00	0.00	0.00
16,000.00	90.51	89.962	6,458.86	-235.12	9,393.91	9,393.75	0.00	0.00	0.00
16,100.00	90.51	89.962	6,457.97	-235.05	9,493.90	9,493.74	0.00	0.00	0.00
16,200.00	90.51	89.962	6,457.09	-234.98	9,593.90	9,593.74	0.00	0.00	0.00
16,300.00	90.51	89.962	6,456.20	-234.92	9,693.89	9,693.74	0.00	0.00	0.00
16,400.00	90.51	89.962	6,455.32	-234.85	9,793.89	9,793.73	0.00	0.00	0.00
16,435.76	90.51	89.962	6,455.00	-234.83	9,829.65	9,829.49	0.00	0.00	0.00
TD at 16435.76									

Design Targets									
Target Name	Dip Angle (°)	Dip Dir. (°)	TVD (ft)	+N/-S (ft)	+E/-W (ft)	Northing (usft)	Easting (usft)	Latitude	Longitude
6-62-3-4841B PBHL - hit/miss target - Shape - Point	0.00	0.000	6,455.00	-234.83	9,829.65	1,432,401.86	3,338,741.22	40° 30' 50.242 N	104° 16' 53.951 W
6-62-3-4841B LP - plan misses target center by 0.01ft at 6832.06ft MD (6540.00 TVD, -241.17 N, 226.33 E) - Point	0.00	0.000	6,540.00	-241.16	226.33	1,432,267.42	3,329,138.86	40° 30' 50.198 N	104° 18' 58.291 W

Plan Annotations				
Measured Depth (ft)	Vertical Depth (ft)	+N/-S (ft)	+E/-W (ft)	Comment
800.00	800.00	0.00	0.00	Start Build 2.00
1,054.53	1,054.20	-7.76	-8.21	Start 3706.22 hold at 1054.53 MD
4,760.75	4,745.80	-233.73	-247.15	Start Drop -2.00
5,015.29	5,000.00	-241.49	-255.36	Start 1062.55 hold at 5015.29 MD
6,077.84	6,062.55	-241.49	-255.36	Start DLS 12.00 TFO 89.96
6,832.06	6,540.00	-241.17	226.33	Start 9603.69 hold at 6832.06 MD
16,435.76	6,455.00	-234.83	9,829.65	TD at 16435.76