

T6N, R62W, 6th P.M.

BILL BARRETT CORPORATION

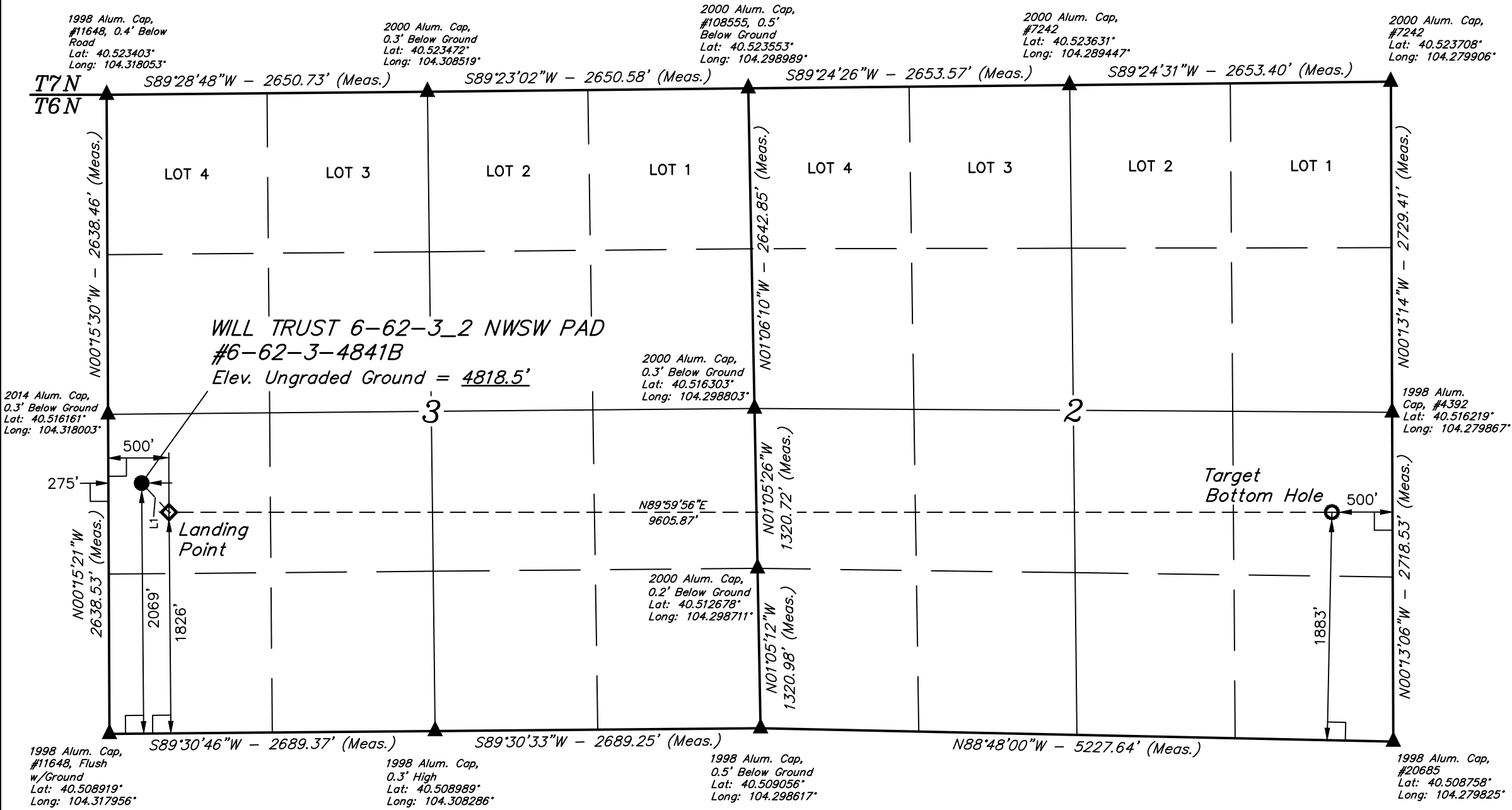
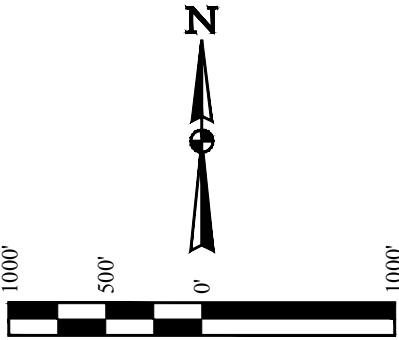
WILL TRUST 6-62-3 2 NWSW PAD #6-62-3-4841B  
NW 1/4 SW 1/4, SECTION 3, T6N, R62W, 6th P.M.  
WELD COUNTY, COLORADO

BASIS OF BEARINGS

BASIS OF BEARINGS IS A G.P.S. OBSERVATION

BASIS OF ELEVATION

SPOT ELEVATION LOCATED AT THE NORTHEAST CORNER OF SECTION 24, T5N, R62W, 6th. P.M. TAKEN FROM THE POINT OF ROCKS, QUADRANGLE, COLORADO, WELD COUNTY, 7.5 MINUTE QUAD (TOPOGRAPHIC MAP) PUBLISHED BY THE UNITED STATES DEPARTMENT OF THE INTERIOR, GEOLOGICAL SURVEY. SAID ELEVATION IS MARKED AS BEING 4530 FEET.



2014 Alum. Cap,  
0.3' Below Ground  
Lat: 40.516161°  
Long: 104.318003°

2014 Alum. Cap,  
0.3' Below Ground  
Lat: 40.516161°  
Long: 104.318003°

1998 Alum. Cap,  
#11648, Flush  
w/Ground  
Lat: 40.508919°  
Long: 104.317956°

1998 Alum. Cap,  
0.3' High  
Lat: 40.508989°  
Long: 104.308286°

1998 Alum. Cap,  
0.5' Below Ground  
Lat: 40.509056°  
Long: 104.298617°

1998 Alum. Cap,  
#20685  
Lat: 40.508758°  
Long: 104.279825°

LINE TABLE		
LINE	DIRECTION	LENGTH
L1	S43°10'59"E	330.39'

- LEGEND:
- 90° SYMBOL
  - PROPOSED WELLHEAD.
  - TARGET BOTTOM HOLE.
  - LANDING POINT
  - SECTION CORNERS LOCATED. (NAD 83)

NAD 83 (SURFACE LOCATION)	NAD 83 (LANDING POINT)	NAD 83 (TARGET BOTTOM HOLE)
LATITUDE = 40°30'52.58" (40.514606)	LATITUDE = 40°30'50.20" (40.513944)	LATITUDE = 40°30'50.24" (40.513956)
LONGITUDE = 104°19'01.22" (104.317006)	LONGITUDE = 104°18'58.29" (104.316192)	LONGITUDE = 104°16'53.95" (104.281653)
NAD 27 (SURFACE LOCATION)	NAD 27 (LANDING POINT)	NAD 27 (TARGET BOTTOM HOLE)
LATITUDE = 40°30'52.64" (40.514622)	LATITUDE = 40°30'50.26" (40.513961)	LATITUDE = 40°30'50.30" (40.513972)
LONGITUDE = 104°18'59.39" (104.316497)	LONGITUDE = 104°18'56.46" (104.315683)	LONGITUDE = 104°16'52.12" (104.281144)
STATE PLANE NAD 83 (CO. NORTH)	STATE PLANE NAD 83 (CO. NORTH)	STATE PLANE NAD 83 (CO. NORTH)
N: 1432505.20 E: 3328909.75	N: 1432267.53 E: 3329139.14	N: 1432401.86 E: 3338741.64
STATE PLANE NAD 27 (CO. NORTH)	STATE PLANE NAD 27 (CO. NORTH)	STATE PLANE NAD 27 (CO. NORTH)
N: 432505.77 E: 2329059.29	N: 432268.10 E: 2329288.67	N: 432402.35 E: 2338891.21

PDOP = 1.5

REV: 2 02-27-17 T.B. (NAME, LP & BHL CHANGE)



UELS, LLC  
Corporate Office \* 85 South 200 East  
Vernal, UT 84078 \* (435) 789-1017

SURVEYED BY	DARREN SHANKS, C.M.	12-14-15	SCALE
DRAWN BY	C.C.	12-28-15	1" = 1000'

WELL LOCATION PLAT



CERTIFICATE  
THIS IS TO CERTIFY THAT THE ABOVE PLAT WAS PREPARED FROM FIELD NOTES OF ACTUAL SURVEYS MADE AND UNDER MY SUPERVISION, AND THAT THE SAME ARE TRUE AND CORRECT TO THE BEST OF MY KNOWLEDGE AND BELIEF.