

HALLIBURTON

iCem[®] Service

EXTRACTION OIL & GAS

United States of America

Date: Thursday, January 05, 2017

Extraction - Burroughs South 11 Surface

Job Date: Sunday, November 27, 2016

Sincerely,

Nathaniel Moore

Legal Notice

Disclaimer:

All information in this report is provided subject to the terms and conditions which govern the services provided by Halliburton. Halliburton personnel use their best efforts in gathering information and their best judgment in interpreting it, but any interpretation, research, analysis or recommendation furnished by Halliburton are opinions based upon inferences from measurements and empirical relationships and assumptions, which inferences and empirical relationships and assumptions are not infallible, and with respect to which professionals in the industry may differ. Accordingly, HALLIBURTON IS UNABLE TO GUARANTEE THE ACCURACY OF ANY CHART INTERPRETATION, RESEARCH ANALYSIS, OR JOB RECOMMENDATION and any interpretation or recommendation is not for use of or reliance upon by any third party. The customer has full responsibility for any of its decisions which are based on the information provided in this report.

Table of Contents

1.0 Cementing Job Summary 4

 1.1 Executive Summary4

 1.2 Job Summary5

2.0 Real-Time Job Summary 7

 2.1 Job Event Log7

3.0 Attachments..... 9

 3.1 Case 1-Custom Results.png.....9

 3.2 Case 1-Custom Results (1).png10

1.0 Cementing Job Summary

1.1 Executive Summary

Halliburton appreciates the opportunity to perform the cementing services on the **Burroughs South 11** cement **Surface** casing job. A pre-job safety meeting was held before the job where details of the job were discussed, potential safety hazards were reviewed, and environmental compliance procedures were outlined.

30 bbls cement to surface

Halliburton maintains a continuous quality improvement process and appreciates any comments or suggestions that you may have. Halliburton again thanks you for the opportunity to perform service work on this well. We hope to be your solutions provider for future projects.

Respectfully,

Halliburton [Ft. Lupton]

1.2 Job Summary

The Road to Excellence Starts with Safety

Sold To #: 369404		Ship To #: 3628478		Quote #:		Sales Order #: 0903689204				
Customer: EXTRACTION OIL & GAS -						Customer Rep: Sean McIntyre				
Well Name: BURROUGHS SOUTH				Well #: 11		API/UWI #: 05-123-40740-00				
Field: WATTENBERG		City (SAP): AULT		County/Parish: WELD			State: COLORADO			
Legal Description: SE NE-14-7N-65W-2266FNL-230FEL										
Contractor:				Rig/Platform Name/Num: Spud Rig						
Job BOM: 7521										
Well Type: HORIZONTAL OIL										
Sales Person: HALAMERICA\HX38199				Srv Supervisor: Nathaniel Moore						
Job										
Job depth MD		1580ft			Job Depth TVD					
Well Data										
Description	New / Used	Size in	ID in	Weight lbm/ft	Thread	Grade	Top MD ft	Bottom MD ft	Top TVD ft	Bottom TVD ft
Casing		9.625	8.921	36			0	1565	0	1565
Open Hole Section			13.5				0	1580	0	1580
Tools and Accessories										
Type	Size in	Qty	Make	Depth ft		Type	Size in	Qty	Make	
Guide Shoe	9.625					Top Plug	9.625	1	HES	
Float Shoe	9.625			1565		Bottom Plug	9.625		HES	
Fluid Data										
Stage/Plug #: 1										
Fluid #	Stage Type	Fluid Name	Qty	Qty UoM	Mixing Density lbm/gal	Yield ft3/sack	Mix Fluid Gal	Rate bbl/min	Total Mix Fluid Gal	
1	Red Dye Spacer	Red Dye Spacer	20	bbl	8.33					
Fluid #	Stage Type	Fluid Name	Qty	Qty UoM	Mixing Density lbm/gal	Yield ft3/sack	Mix Fluid Gal	Rate bbl/min	Total Mix Fluid Gal	
2	SwiftCem	SWIFTCM (TM) SYSTEM	550	sack	13.5	1.74		5	9.2	
9.20 Gal		FRESH WATER								

Fluid #	Stage Type	Fluid Name	Qty	Qty UoM	Mixing Density lbm/gal	Yield ft3/sack	Mix Fluid Gal	Rate bbl/min	Total Mix Fluid Gal
3	Fresh Water	Fresh Water	117	bbl	8.33				
Cement Left In Pipe		Amount	42 ft		Reason			Shoe Joint	

30 bbl cement to surface

2.0 Real-Time Job Summary

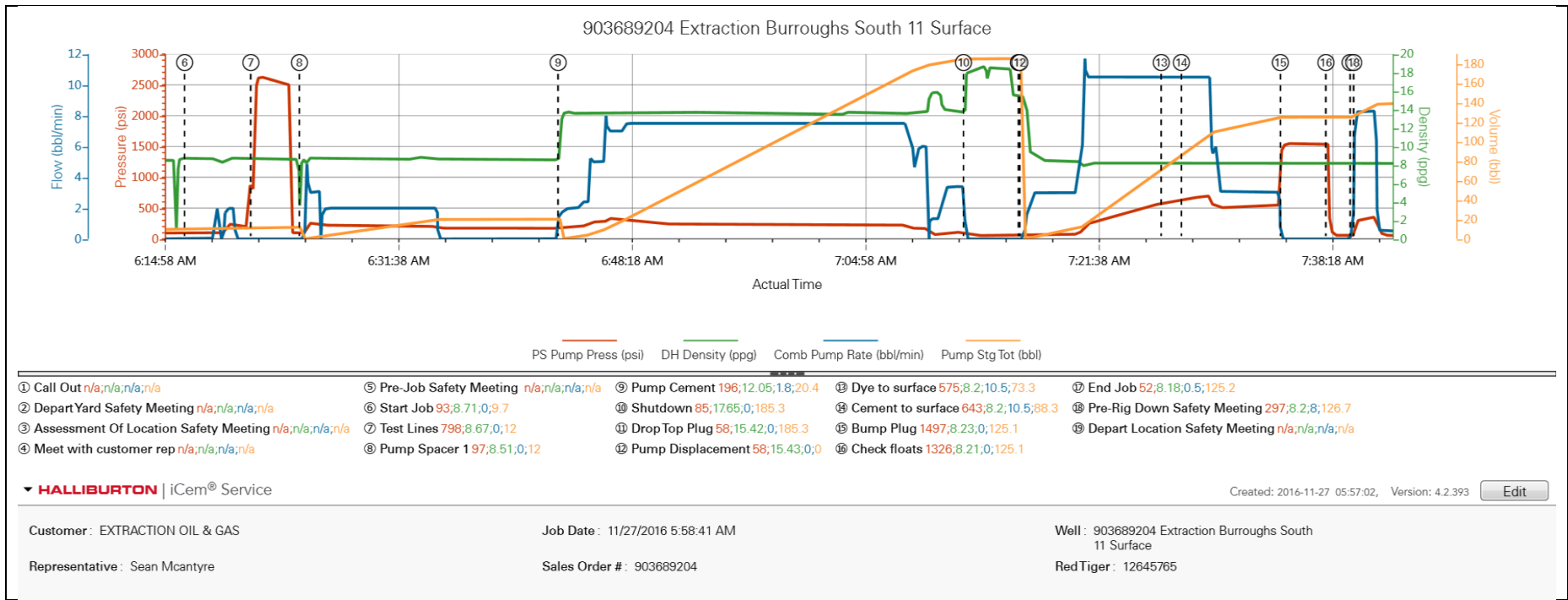
2.1 Job Event Log

Type	Seq. No.	Activity	Graph Label	Date	Time	Source	Pump Pressure (psi)	Downhole Density (ppg)	Combined Pump Rate (bbl/min)	Comments
Event	1	Call Out	Call Out	11/27/2016	20:00:00	USER				OL time 0100. Verify equipment and materials
Event	2	Depart Yard Safety Meeting	Depart Yard Safety Meeting	11/27/2016	23:00:00	USER				
Event	3	Assessment Of Location Safety Meeting	Assessment Of Location Safety Meeting	11/27/2016	00:00:00	USER				Spot in and rig up equipment. Rig still pulling drill pipe.
Event	4	Other	Meet with customer rep	11/27/2016	05:25:00	USER				TD 1580' 13.5" open hole. TP 1565' 9.625" J-55 casing. 43' SJ.
Event	5	Event	Pre-Job Safety Meeting	11/27/2016	05:30:00	USER				Casing on bottom.
Event	6	Start Job	Start Job	11/27/2016	06:16:33	COM1				Fill lines 3 bbl water. Circulation established
Event	7	Test Lines	Test Lines	11/27/2016	06:21:17	COM1	2635.00	8.33		500 psi kickout test and 2500 psi pressure test
Event	8	Pump Spacer 1	Pump Spacer 1	11/27/2016	06:24:45	COM1	200.00	8.33	2.00	20 bbl water with dye in last 10
Event	9	Pump Cement	Pump Cement	11/27/2016	06:43:13	COM1	250.00	13.50	7.50	550 sks/170 bbl 13.5 ppg 1.74 ft3/sk 9.2 gal/sk
Event	10	Shutdown	Shutdown	11/27/2016	07:12:09	COM1				Washup on top of plug
Event	11	Drop Top Plug	Drop Top Plug	11/27/2016	07:16:04	COM1				
Event	12	Pump Displacement	Pump Displacement	11/27/2016	07:16:09	COM1	50.00	8.33	3.00	117 bbl water displacement
Event	13	Other	Dye to surface	11/27/2016	07:26:15	COM1	574.00	8.33	10.50	60 bbl into displacement
Event	14	Other	Cement to surface	11/27/2016	07:27:41	COM1	642.00	8.33	10.50	80 bbl into displacement. 30 bbl cement back.
Event	15	Bump Plug	Bump Plug	11/27/2016	07:34:45	COM1	1489.00	8.33		550 psi final circulating pressure. Pressured up to 1500 psi for 5 minute casing test.
Event	16	Other	Check floats	11/27/2016	07:38:00	COM1				0.5 bbl back. Floats held.
Event	17	End Job	End Job	11/27/2016	07:39:44	COM1				
Event	18	Pre-Rig Down Safety Meeting	Pre-Rig Down Safety Meeting	11/27/2016	07:40:00	USER				

Event	19	Depart Location Safety Meeting	Depart Location Safety Meeting	11/27/2016	09:00:00	USER
-------	----	--------------------------------	--------------------------------	------------	----------	------

3.0 Attachments

3.1 Case 1-Custom Results.png



3.2 Case 1-Custom Results (1).png

