

HALLIBURTON

iCem[®] Service

EXTRACTION OIL & GAS

United States of America, COLORADO

Date: Sunday, October 30, 2016

Burroughs South #10

Surface

Job Date: Monday, October 24, 2016

Sincerely,

Lauren Roberts

Legal Notice

Disclaimer:

All information in this report is provided subject to the terms and conditions which govern the services provided by Halliburton. Halliburton personnel use their best efforts in gathering information and their best judgment in interpreting it, but any interpretation, research, analysis or recommendation furnished by Halliburton are opinions based upon inferences from measurements and empirical relationships and assumptions, which inferences and empirical relationships and assumptions are not infallible, and with respect to which professionals in the industry may differ. Accordingly, HALLIBURTON IS UNABLE TO GUARANTEE THE ACCURACY OF ANY CHART INTERPRETATION, RESEARCH ANALYSIS, OR JOB RECOMMENDATION and any interpretation or recommendation is not for use of or reliance upon by any third party. The customer has full responsibility for any of its decisions which are based on the information provided in this report.

Table of Contents

1.0 Cementing Job Summary 4

 1.1 Executive Summary4

2.0 Real-Time Job Summary 7

 2.1 Job Event Log7

3.0 Attachments..... 9

 3.1 CHART.png.....9

 3.2 NO LEGEND.png.....10

 3.3 CHART.png.....11

 3.4 NO LEGEND.png.....12

1.0 Cementing Job Summary

1.1 Executive Summary

Halliburton appreciates the opportunity to perform the cementing services on the **Burroughs South #10** cement **Surface** casing job. A pre-job safety meeting was held before the job where details of the job were discussed, potential safety hazards were reviewed, and environmental compliance procedures were outlined.

23 bbl. of cement returned to surface.

Halliburton maintains a continuous quality improvement process and appreciates any comments or suggestions that you may have. Halliburton again thanks you for the opportunity to perform service work on this well. We hope to be your solutions provider for future projects.

Respectfully,

Halliburton [Ft. Lupton]

HALLIBURTON

Cementing Job Summary

The Road to Excellence Starts with Safety

Sold To #: 369404	Ship To #: 3628477	Quote #:	Sales Order #: 0903622218							
Customer: EXTRACTION OIL & GAS -		Customer Rep: LARRY SIEGEL								
Well Name: BURROUGHS SOUTH	Well #: 10	API/UWI #: 05-123-40737-00								
Field: WATTENBERG	City (SAP): AULT	County/Parish: WELD	State: COLORADO							
Legal Description: SE NE-14-7N-65W-2241FNL-230FEL										
Contractor:		Rig/Platform Name/Num: Spud Rig								
Job BOM: 7521										
Well Type: HORIZONTAL OIL										
Sales Person: HALAMERICA\HX38199		Srv Supervisor: Jesse Slaughter								
Job										
Formation Name										
Formation Depth (MD)	Top	Bottom								
Form Type		BHST								
Job depth MD	1572ft	Job Depth TVD								
Water Depth		Wk Ht Above Floor	7ft							
Perforation Depth (MD)	From	To								
Well Data										
Description	New / Used	Size in	ID in	Weight lbm/ft	Thread	Grade	Top MD ft	Bottom MD ft	Top TVD ft	Bottom TVD ft
Casing		9.625	8.921	36			0	1572	0	1572
Open Hole Section			13.5				0	1588	0	1588
Tools and Accessories										
Type	Size in	Qty	Make	Depth ft		Type	Size in	Qty	Make	
Guide Shoe	9.625			1572		Top Plug	9.625	1	HES	
Float Shoe	9.625					Bottom Plug	9.625		HES	
Float Collar	9.625					SSR plug set	9.625		HES	
Insert Float	9.625					Plug Container	9.625	1	HES	
Stage Tool	9.625					Centralizers	9.625		HES	
Fluid Data										
Stage/Plug #: 1										
Fluid #	Stage Type	Fluid Name	Qty	Qty UoM	Mixing Density lbm/gal	Yield ft ³ /sack	Mix Fluid Gal	Rate bbl/min	Total Mix Fluid Gal	
1	Fresh Water	Fresh Water	10	bbl	8.33			4		
Stage/Plug #: 2										
Fluid #	Stage Type	Fluid Name	Qty	Qty UoM	Mixing Density lbm/gal	Yield ft ³ /sack	Mix Fluid Gal	Rate bbl/min	Total Mix Fluid Gal	
2	SwiftCem	SWIFTCM (TM) SYSTEM	525	sack	13.5	1.74		6	9.2	
9.20 Gal		FRESH WATER								

last updated on 10/24/2016 9:48:08 PM

Page 1 of 2

iCem® Service

(v. 4.3.44)

Created: Sunday, October 30, 2016

HALLIBURTON

Cementing Job Summary

Fluid #	Stage Type	Fluid Name	Qty	Qty UoM	Mixing Density lbm/gal	Yield ft3/sack	Mix Fluid Gal	Rate bbl/min	Total Mix Fluid Gal
3	Fresh Water	Fresh Water	118.3	bbl	8.33			8	
Cement Left In Pipe		Amount	42 ft		Reason			Shoe Joint	
Comment									

2.0 Real-Time Job Summary

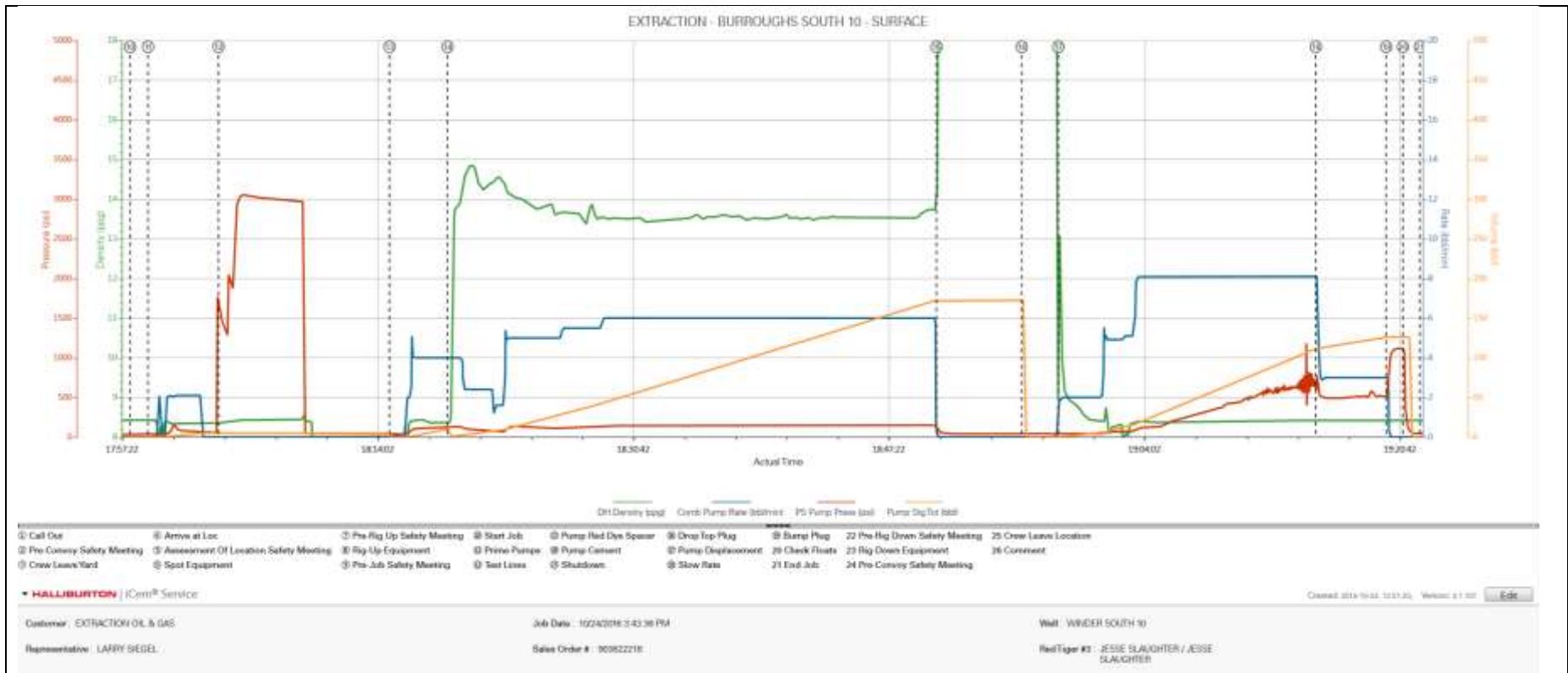
2.1 Job Event Log

Type	Seq. No.	Activity	Graph Label	Date	Time	Source	Comments
Event	1	Call Out	Call Out	10/24/2016	11:00:00	USER	
Event	2	Pre-Convoy Safety Meeting	Pre-Convoy Safety Meeting	10/24/2016	12:50:00	USER	WITH ALL HES PERSONNEL
Event	3	Crew Leave Yard	Crew Leave Yard	10/24/2016	13:00:00	USER	
Event	4	Arrive At Loc	Arrive at Loc	10/24/2016	15:00:00	USER	RIG WAS RUNNING CASING UPON HES ARRIVAL
Event	5	Assessment Of Location Safety Meeting	Assessment Of Location Safety Meeting	10/24/2016	15:10:00	USER	WITH ALL HES PERSONNEL
Event	6	Other	Spot Equipment	10/24/2016	15:15:00	USER	
Event	7	Pre-Rig Up Safety Meeting	Pre-Rig Up Safety Meeting	10/24/2016	15:20:00	USER	WITH ALL HES PERSONNEL
Event	8	Rig-Up Equipment	Rig-Up Equipment	10/24/2016	15:30:00	USER	1 RED TIGER, 2 660 BULK TRUCKS
Event	9	Pre-Job Safety Meeting	Pre-Job Safety Meeting	10/24/2016	17:50:00	USER	WITH ALL PERSONNEL
Event	10	Start Job	Start Job	10/24/2016	17:58:00	USER	TD 1588 FT, TP 1572 FT, SHOE 42 FT, CSG 9 5/8 IN 36 LB/FT, HOLE 13 1/2 IN, MUD WT 8.6 PPG
Event	11	Prime Pumps	Prime Pumps	10/24/2016	17:59:09	COM4	FRESH WATER
Event	12	Test Lines	Test Lines	10/25/2016	18:03:45	COM4	TESTED LINES TO 3056 PSI PRESSURE HOLDING
Event	13	Pump Spacer 1	Pump Red Dye Spacer	10/25/2016	18:14:54	COM4	FRESH WATER WITH 2 LB RED DYE
Event	14	Pump Cement	Pump Cement	10/25/2016	18:18:41	COM4	525 SKS AT 13.5 PPG, 1.74 FT3/SK, 9.2 GAL/SK
Event	15	Shutdown	Shutdown	10/25/2016	18:50:35	USER	
Event	16	Drop Top Plug	Drop Top Plug	10/25/2016	18:56:08	USER	PLUG LAUNCHED
Event	17	Pump Displacement	Pump Displacement	10/25/2016	18:58:31	COM4	FRESH WATER
Event	18	Slow Rate	Slow Rate	10/25/2016	19:15:19	USER	SLOWED RATE 10 BBLS PRIOR TO CALCULATED DISPLACEMENT
Event	19	Bump Plug	Bump Plug	10/25/2016	19:19:54	COM4	

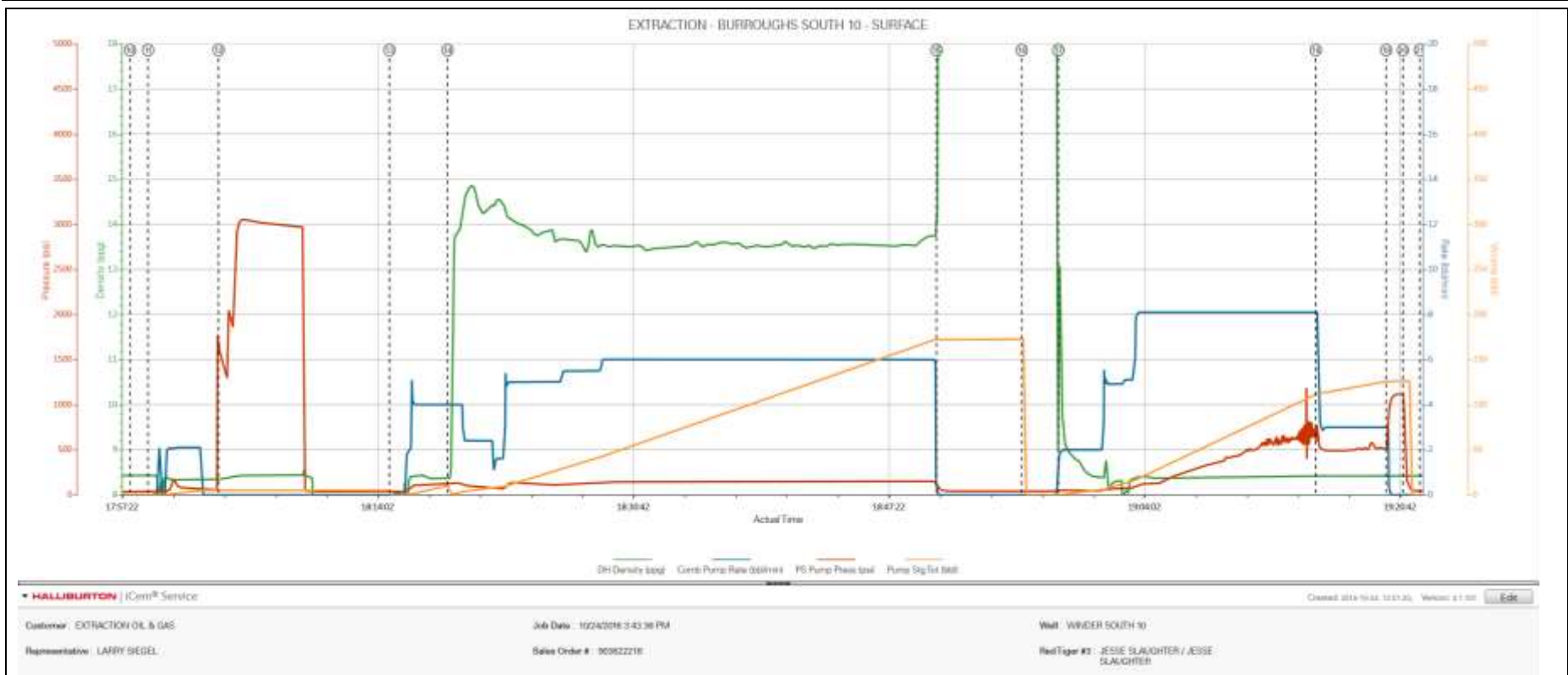
Event	20	Check Floats	Check Floats	10/25/2016	19:21:00	USER	FLOATS HOLDING, HES RETURNED 1/2 BBL H2O TO PUMP
Event	21	End Job	End Job	10/25/2016	19:22:06	COM4	PIPE WAS STATIC DURING JOB, GOOD CIRCULATION THROUGHOUT JOB. HES RETURNED 23 BBLS CEMENT TO SURFACE.
Event	22	Pre-Rig Down Safety Meeting	Pre-Rig Down Safety Meeting	10/25/2016	19:30:00	USER	WITH ALL HES PERSONNEL
Event	23	Rig-Down Equipment	Rig-Down Equipment	10/25/2016	19:35:00	USER	
Event	24	Pre-Convoy Safety Meeting	Pre-Convoy Safety Meeting	10/25/2016	19:50:00	USER	WITH ALL HES PERSONNEL
Event	25	Crew Leave Location	Crew Leave Location	10/25/2016	20:00:00	USER	
Event	26	Comment	Comment	10/25/2016	20:01:00	USER	THANK YOU FOR USING HALLIBURTON CEMENT DEPARTMENT. JESSE SLAUGHTER AND CREW.

3.0 Attachments

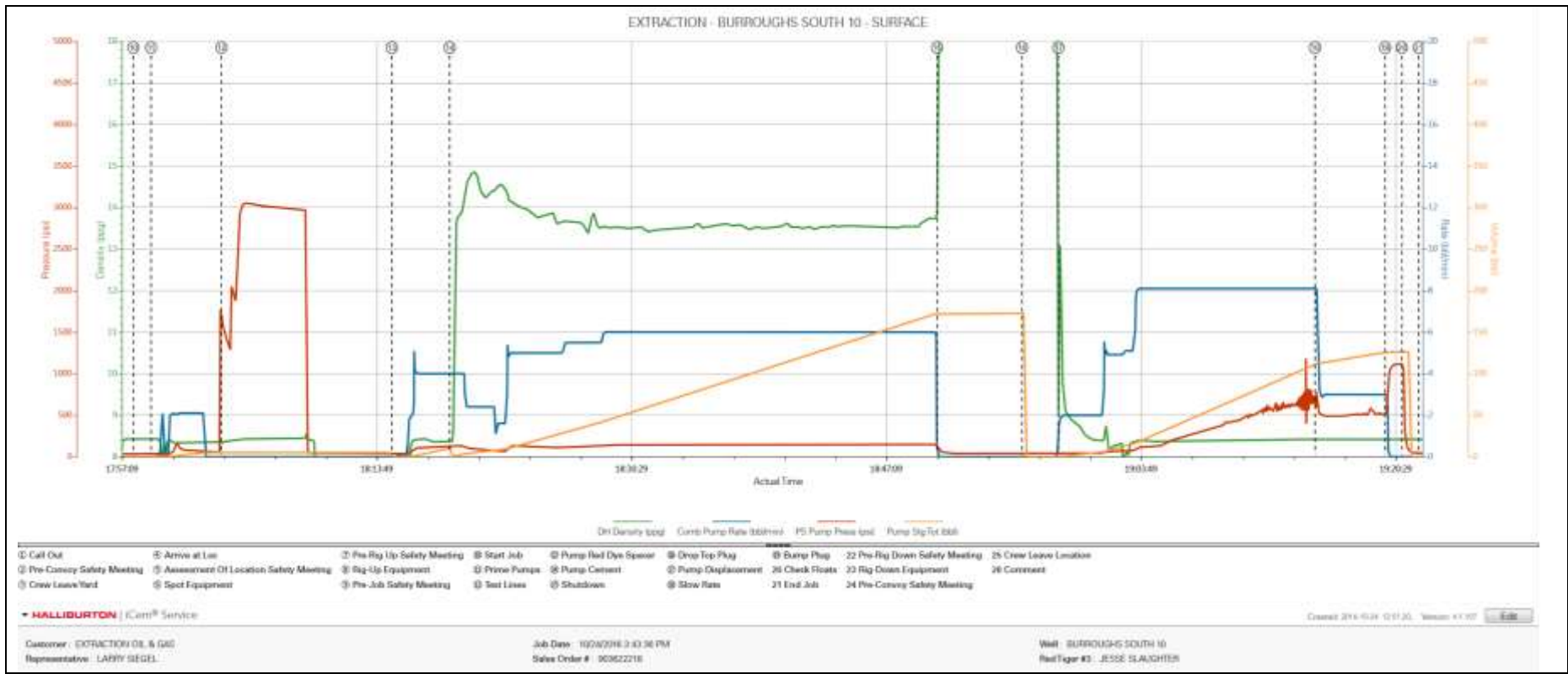
3.1 CHART.png



3.2 NO LEGEND.png



3.3 CHART.png



3.4 NO LEGEND.png

