

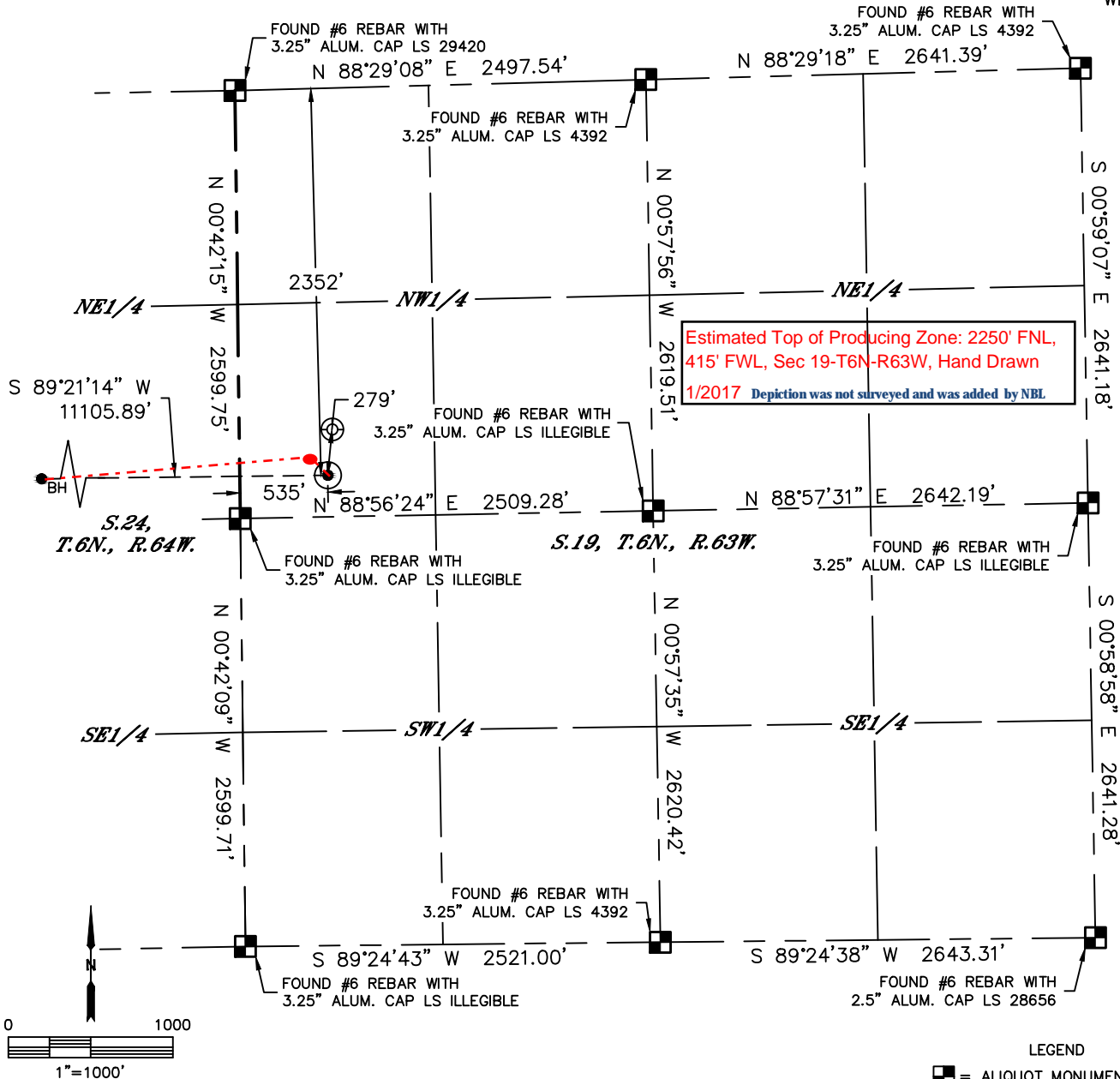


Lat40°, Inc. 6250 W. 10th Street, Unit 2, Greeley, CO 970-515-5294

# WELL LOCATION CERTIFICATE

LARSON A23-656

SECTION: 19  
TOWNSHIP: 6N  
RANGE: 63W  
6TH. P.M.  
WELD COUNTY, CO



CLIENT: NOBLE ENERGY				LANDMAN: CORY NEIGHBORS			
INSTRUMENT OPERATOR: CASEY KOHOUT				SURVEY DATE: 8/9/2016		SURFACE USE: CROP LAND	
SHL FOOTAGE	SHL LAT°	SHL LONG°	SHL PDOP	SHL ELEV	SHL 1/4/1/4	SHL S-T-R	
2352 FNL	535 FWL	40.47261	-104.48686	2.0	4649	SWNW	19-6-63

BHL FOOTAGE	BHL LAT°	BHL LONG°	BHL S-T-R
2255 FNL	0 FWL	40.47260	-104.52676 23-6-64

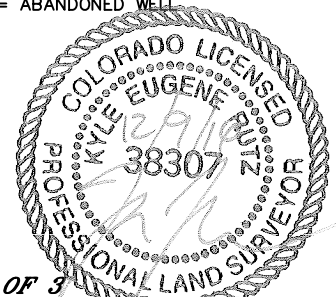
NEAREST EXISTING WELL IN SHL 1/4/1/4	
EXISTING LARSON USX AA19-5	±279' NE
NEAREST CULTURAL ITEMS	
BUILDING	±1787' SE
BUILDING UNIT	±1853' SE
HIGH OCCUPANCY BUILDING UNIT	5280'+
DESIGNATED OUTSIDE ACTIVITY AREA	5280'+
PUBLIC ROAD (COUNTY ROAD 61)	±521' W
ABOVE GROUND UTILITY	±450' SW
RAILROAD	5280'+
PROPERTY LINE	±252' S

## NOTE:

- 1) Bearings shown are Grid Bearings of the Colorado State Plane Coordinate System, North Zone, North American Datum 1983. The lineal dimensions as contained herein are based upon the "U.S. Survey Foot."
- 2) Distances to section lines measured at 90 degrees from said section lines.
- 3) Ground elevations are based on an observed GPS elevation (NAVD 1988 DATUM).
- 4) Latitude and Longitude shown are (NAD 83 DATUM).
- 5) IMPROVEMENTS: See LOCATION DRAWING for all visible improvements within 500' of oil and gas location.
- 6) This map does not represent a boundary survey.

## LEGEND

- = ALIQUOT MONUMENT AS DESCRIBED
- = CALCULATED POSITION
- = SURFACE HOLE LOCATION (SHL)
- ▲ = ENTRY POINT LOCATION (EP)
- BH = BOTTOM HOLE LOCATION (BHL)
- ⊕ = EXISTING WELL
- ⊗ = ABANDONED WELL



SHEET 1 OF 3

Kyle E. Rutz—On behalf of Lat40°, Inc.  
Colorado Licensed Professional Land Surveyor No. 38307  
DATE: 12/9/2016  
PROJECT#: 2016002

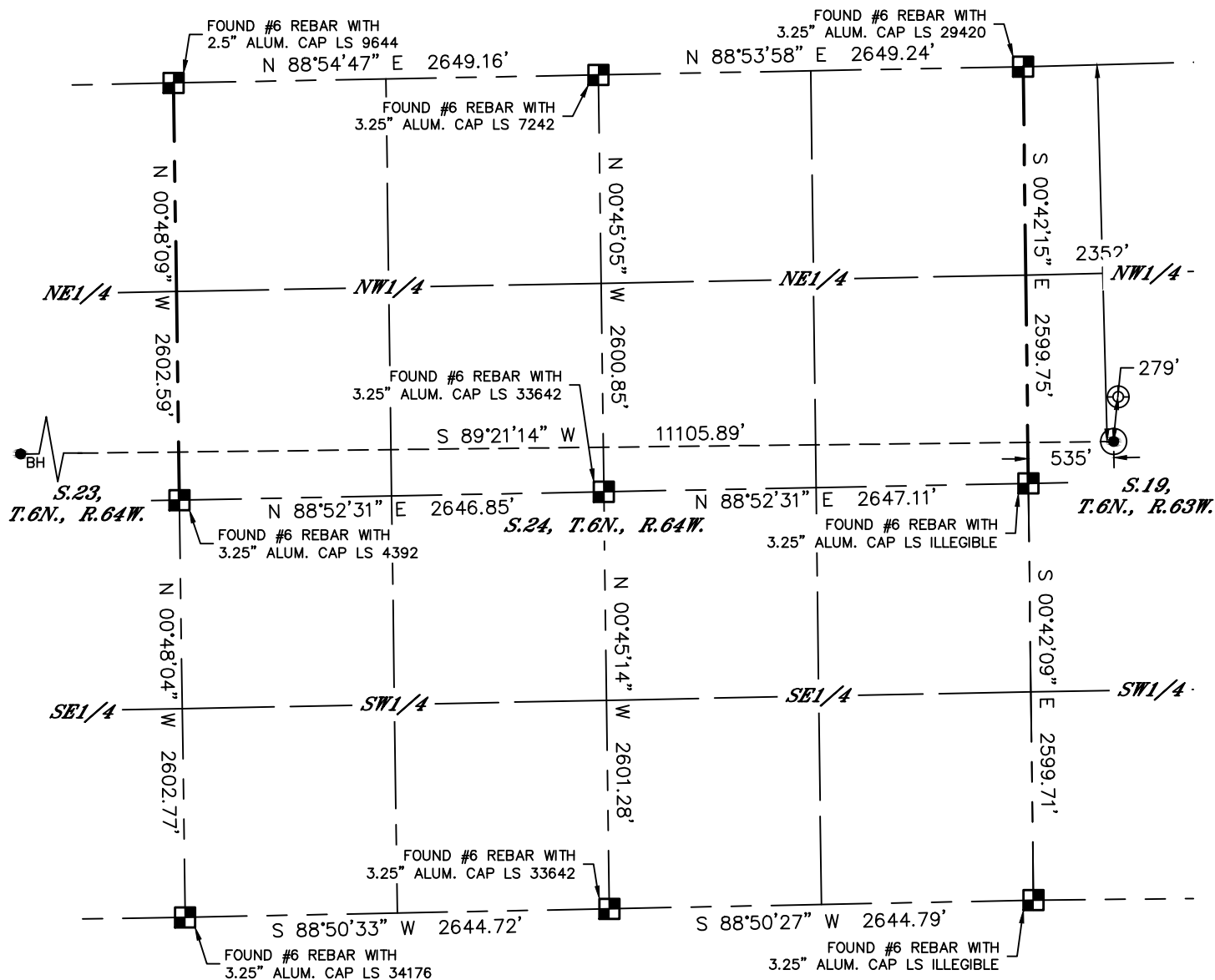


Lat40°, Inc. 6250 W. 10th Street, Unit 2, Greeley, CO 970-515-5294

# WELL LOCATION CERTIFICATE

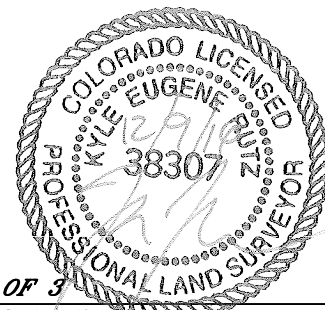
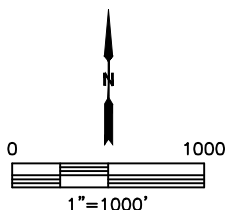
LARSON A23-656

SECTION: 19  
TOWNSHIP: 6N  
RANGE: 63W  
6TH. P.M.  
WELD COUNTY, CO



## LEGEND

- = ALIQUOT MONUMENT AS DESCRIBED
- = CALCULATED POSITION
- = SURFACE HOLE LOCATION (SHL)
- = ENTRY POINT LOCATION (EP)
- = BOTTOM HOLE LOCATION (BHL)
- = EXISTING WELL
- = ABANDONED WELL



**SHEET 2 OF 3**

Kyle E. Rutz—On behalf of Lat40°, Inc.  
Colorado Licensed Professional Land Surveyor No. 38307  
DATE: 12/9/2016  
PROJECT#: 2016002

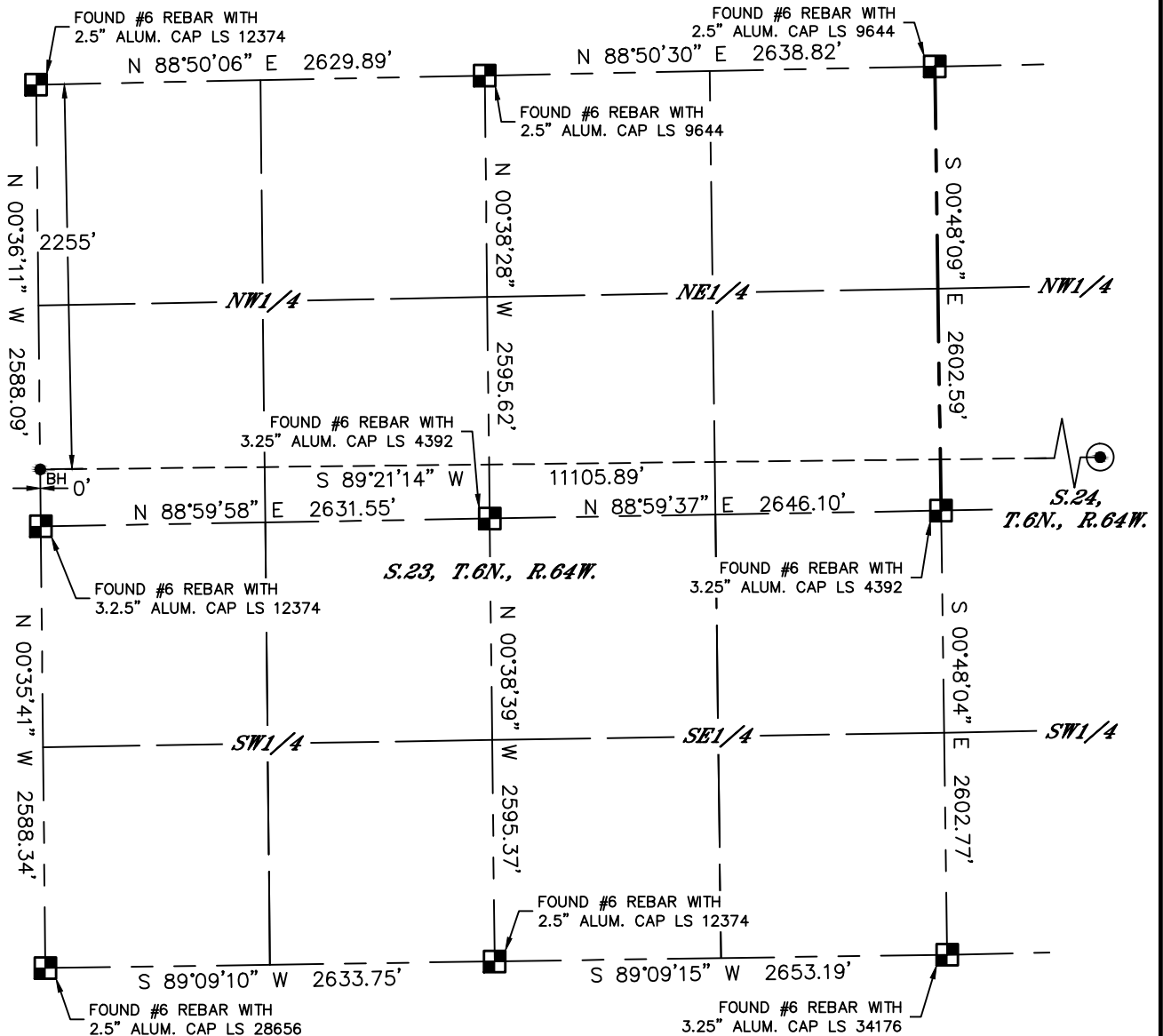


Lat40°, Inc. 6250 W. 10th Street, Unit 2, Greeley, CO 970-515-5294

# WELL LOCATION CERTIFICATE

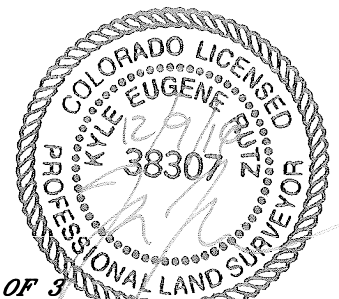
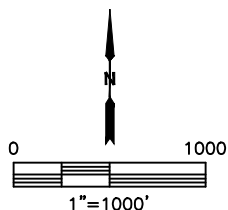
LARSON A23-656

SECTION: 19  
TOWNSHIP: 6N  
RANGE: 63W  
6TH. P.M.  
WELD COUNTY, CO



## LEGEND

- = ALIQUOT MONUMENT AS DESCRIBED
- = CALCULATED POSITION
- ⊙ = SURFACE HOLE LOCATION (SHL)
- ▲ = ENTRY POINT LOCATION (EP)
- <sub>BH</sub> = BOTTOM HOLE LOCATION (BHL)
- ⊕ = EXISTING WELL
- ⊖ = ABANDONED WELL



**SHEET 3 OF 3**

Kyle E. Rutz—On behalf of Lat40°, Inc.  
Colorado Licensed Professional Land Surveyor No. 38307  
DATE: 12/9/2016  
PROJECT#: 2016002