

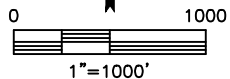
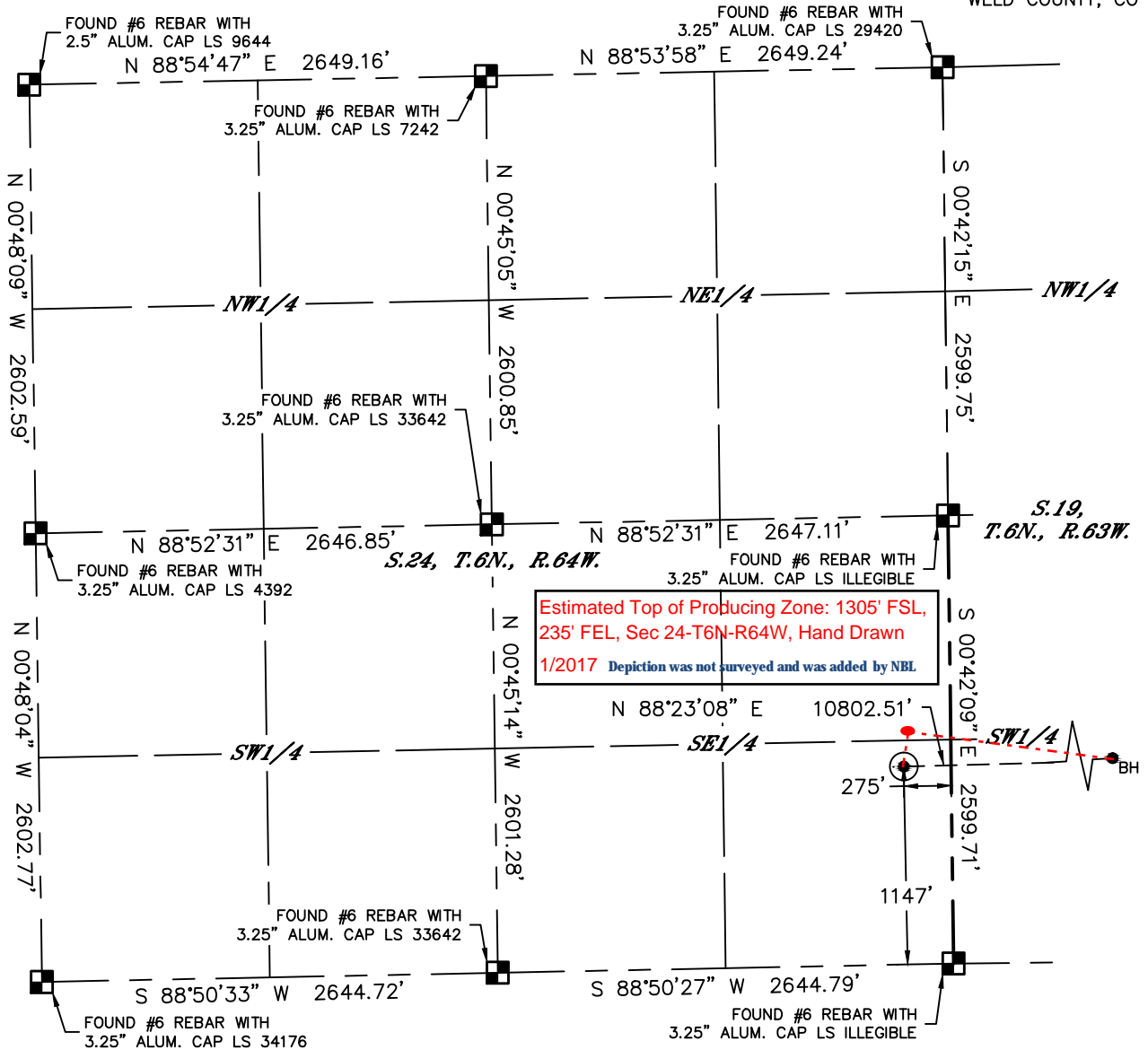


Lat40°, Inc. 6250 W. 10th Street, Unit 2, Greeley, CO 970-515-5294

WELL LOCATION CERTIFICATE

LARSON AA19-630

SECTION: 24
TOWNSHIP: 6N
RANGE: 64W
6TH. P.M.
WELD COUNTY, CO



| CLIENT: NOBLE ENERGY | | | | LANDMAN: CORY NEIGHBORS | | | |
|-----------------------------------|----------|-----------|----------|-------------------------|-------------|------------------------|-------------------|
| INSTRUMENT OPERATOR: CHASE MILLER | | | | SURVEY DATE: 2/5/2016 | | SURFACE USE: CROP LAND | |
| SHL FOOTAGE | SHL LAT° | SHL LONG° | SHL PDOP | SHL ELEV | SHL 1/4/1/4 | SHL S-T-R | |
| 1147 | FSL | 275 | FEL | 40.46791 | -104.48976 | 1.7 | 4646 SESE 24-6-64 |

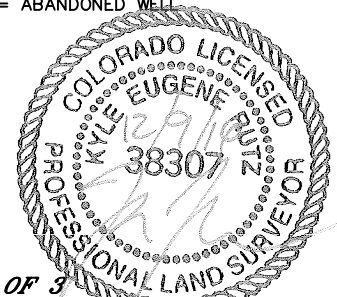
| BHL FOOTAGE | | | | BHL LAT ° | BHL LONG ° | BHL S-T-R |
|-------------|-----|---|-----|-----------|------------|-----------|
| 1305 | FSL | 0 | FEL | 40.46840 | -104.45095 | 20-6-63 |

| NEAREST EXISTING WELL IN SHL 1/4/1/4 | |
|--------------------------------------|-----------|
| EXISTING WELL | N/A |
| NEAREST CULTURAL ITEMS | |
| BUILDING | ±798' SE |
| BUILDING UNIT | ±1051' SE |
| HIGH OCCUPANCY BUILDING UNIT | 5280'+ |
| DESIGNATED OUTSIDE ACTIVITY AREA | 5280'+ |
| PUBLIC ROAD (COUNTY ROAD 61) | ±267' E |
| ABOVE GROUND UTILITY | ±300' E |
| RAILROAD | 5280'+ |
| PROPERTY LINE | ±275' E |

NOTE:

- 1) Bearings shown are Grid Bearings of the Colorado State Plane Coordinate System, North Zone, North American Datum 1983. The lineal dimensions as contained herein are based upon the "U.S. Survey Foot."
- 2) Distances to section lines measured at 90 degrees from said section lines.
- 3) Ground elevations are based on an observed GPS elevation (NAVD 1988 DATUM).
- 4) Latitude and Longitude shown are (NAD 83 DATUM).
- 5) IMPROVEMENTS: See LOCATION DRAWING for all visible improvements within 500' of oil and gas location.
- 6) This map does not represent a boundary survey.

- LEGEND
- = ALIQUOT MONUMENT AS DESCRIBED
 - = CALCULATED POSITION
 - = SURFACE HOLE LOCATION (SHL)
 - ▲ = ENTRY POINT LOCATION (EP)
 - BH = BOTTOM HOLE LOCATION (BHL)
 - ⊕ = EXISTING WELL
 - ⊗ = ABANDONED WELL



SHEET 1 OF 3

Kyle E. Rutz—On behalf of Lat40°, Inc.
Colorado Licensed Professional Land Surveyor No. 38307
DATE: 12/9/2016
PROJECT#: 2016002

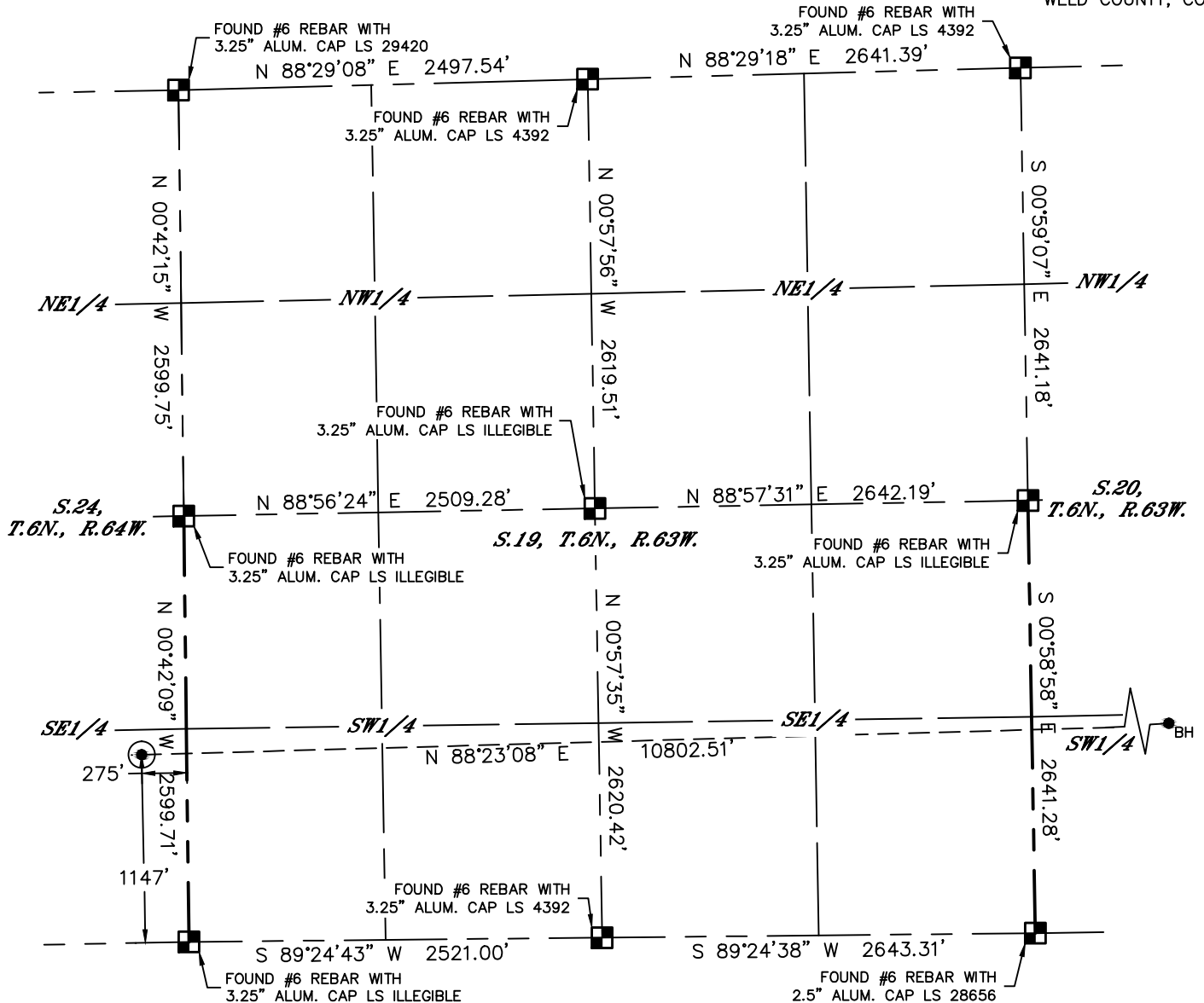


Lat40°, Inc. 6250 W. 10th Street, Unit 2, Greeley, CO 970-515-5294

WELL LOCATION CERTIFICATE

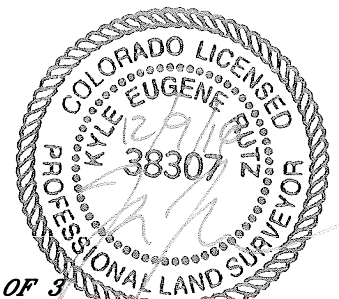
LARSON AA19-630

SECTION: 24
TOWNSHIP: 6N
RANGE: 64W
6TH. P.M.
WELD COUNTY, CO



LEGEND

- = ALIQUOT MONUMENT AS DESCRIBED
- = CALCULATED POSITION
- = SURFACE HOLE LOCATION (SHL)
- ▲ = ENTRY POINT LOCATION (EP)
- _{BH} = BOTTOM HOLE LOCATION (BHL)
- ⊙ = EXISTING WELL
- ⊙ = ABANDONED WELL



SHEET 2 OF 3

Kyle E. Rutz—On behalf of Lat40°, Inc.
Colorado Licensed Professional Land Surveyor No. 38307
DATE: 12/9/2016
PROJECT#: 2016002

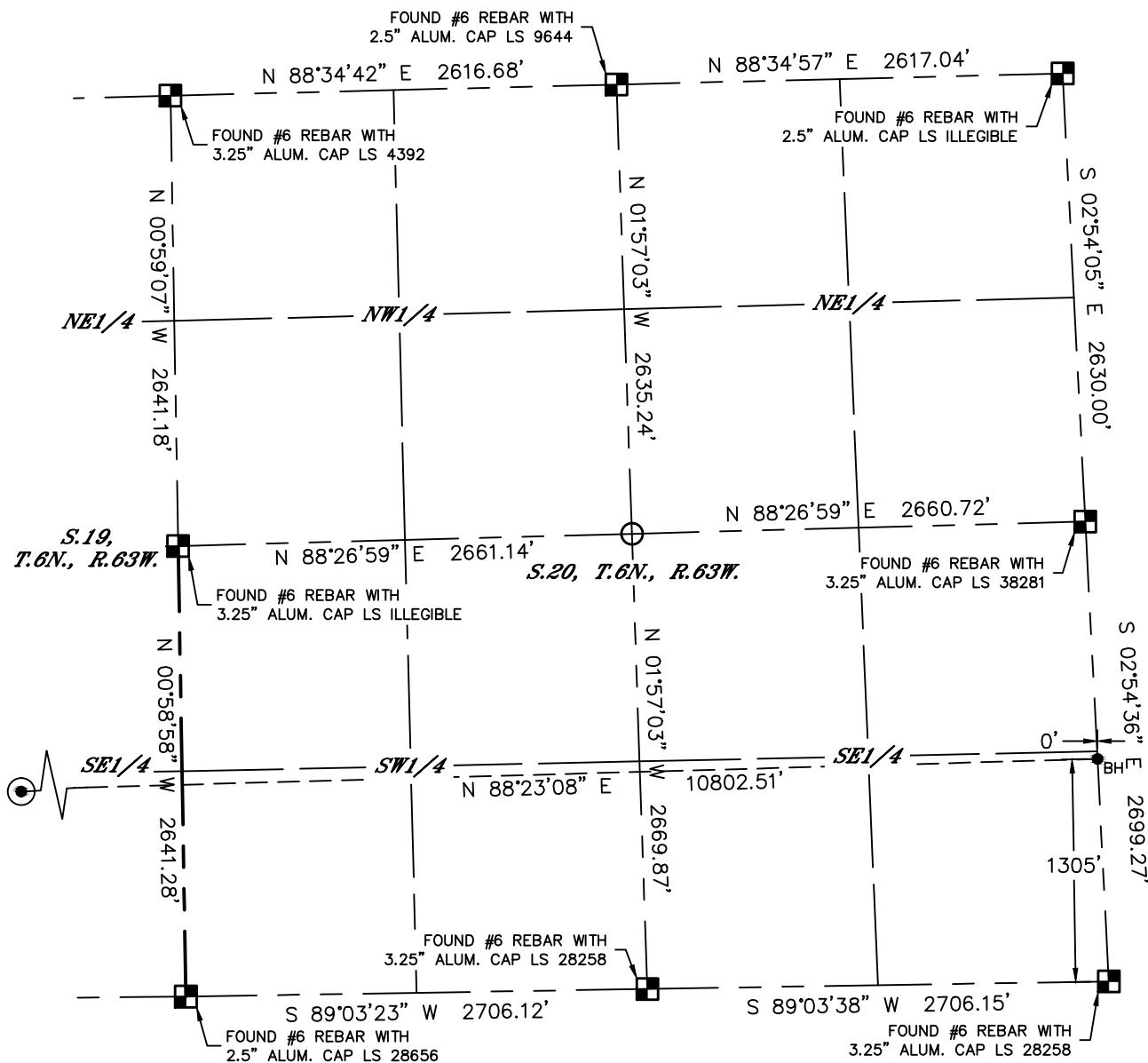


Lat40°, Inc. 6250 W. 10th Street, Unit 2, Greeley, CO 970-515-5294

WELL LOCATION CERTIFICATE

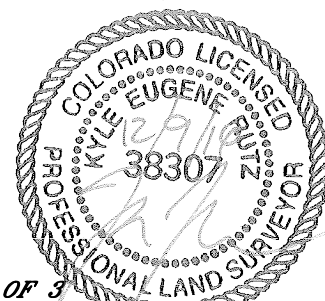
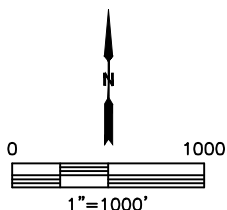
LARSON AA19-630

SECTION: 24
TOWNSHIP: 6N
RANGE: 64W
6TH. P.M.
WELD COUNTY, CO



LEGEND

- = ALIQUOT MONUMENT AS DESCRIBED
- = CALCULATED POSITION
- ⊙ = SURFACE HOLE LOCATION (SHL)
- ▲ = ENTRY POINT LOCATION (EP)
- = BOTTOM HOLE LOCATION (BHL)
- ⊙ = EXISTING WELL
- ⊙ = ABANDONED WELL



SHEET 3 OF 3

Kyle E. Rutz—On behalf of Lat40°, Inc.
Colorado Licensed Professional Land Surveyor No. 38307
DATE: 12/9/2016
PROJECT#: 2016002