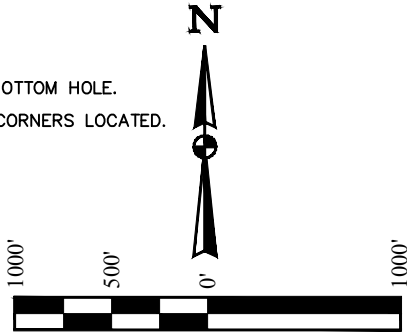


LEGEND:
 ◆ = HEEL.
 ○ = TARGET BOTTOM HOLE.
 ▲ = SECTION CORNERS LOCATED.

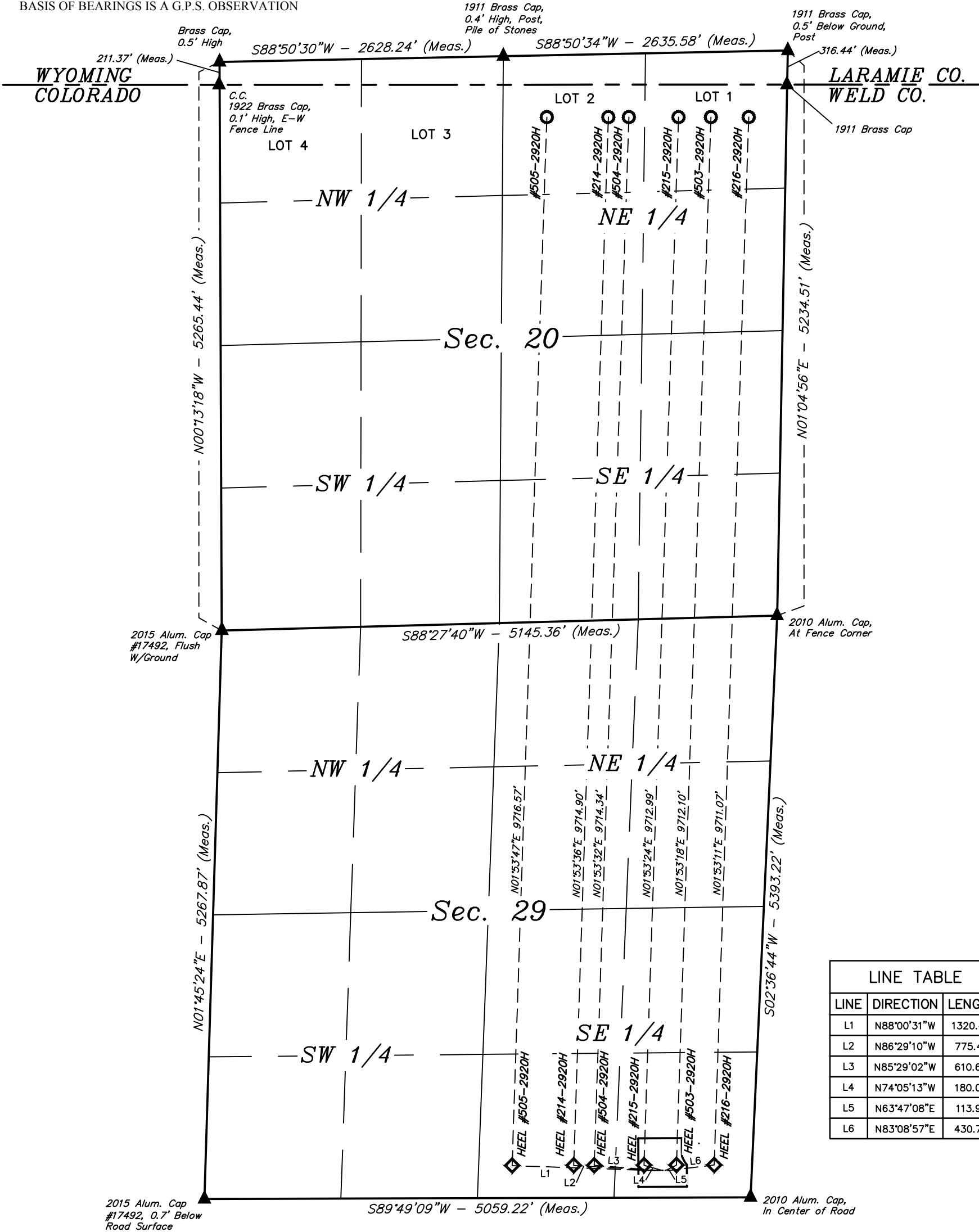


BASIS OF BEARINGS

BASIS OF BEARINGS IS A G.P.S. OBSERVATION

T12N, R62W, 6th P.M.

WELL	BHL FOOTAGES	FROM STATE LINE	SECTION	TOWNSHIP	RANGE
#505-2920H	572' FNL 2220' FEL	300'	20	12N	62W
#214-2920H	583' FNL 1650' FEL	300'	20	12N	62W
#504-2920H	587' FNL 1460' FEL	300'	20	12N	62W
#215-2920H	596' FNL 1000' FEL	300'	20	12N	62W
#503-2920H	602' FNL 700' FEL	300'	20	12N	62W
#216-2920H	609' FNL 350' FEL	300'	20	12N	62W



LINE TABLE		
LINE	DIRECTION	LENGTH
L1	N88°00'31"W	1320.44'
L2	N86°29'10"W	775.41'
L3	N85°29'02"W	610.63'
L4	N74°05'13"W	180.09'
L5	N63°47'08"E	113.91'
L6	N83°08'57"E	430.74'

WELL	SHL FOOTAGES	SECTION	TOWNSHIP	RANGE
#505-2920H	250' FSL 900' FEL	29	12N	62W
#214-2920H	250' FSL 875' FEL	29	12N	62W
#504-2920H	250' FSL 850' FEL	29	12N	62W
#215-2920H	250' FSL 825' FEL	29	12N	62W
#503-2920H	250' FSL 800' FEL	29	12N	62W
#216-2920H	250' FSL 775' FEL	29	12N	62W

WELL	HEEL FOOTAGES	SECTION	TOWNSHIP	RANGE
#505-2920H	300' FSL 2220' FEL	29	12N	62W
#214-2920H	300' FSL 1650' FEL	29	12N	62W
#504-2920H	300' FSL 1460' FEL	29	12N	62W
#215-2920H	300' FSL 1000' FEL	29	12N	62W
#503-2920H	300' FSL 700' FEL	29	12N	62W
#216-2920H	300' FSL 350' FEL	29	12N	62W

REV: 3 02-17-17 M.D. (ADD WELLS, COMPANY NAME, PAD & WELL CHANGES)

FIFTH CREEK ENERGY COMPANY, LLC

RANDALL CREEK 29 SESE
 SE 1/4 SE 1/4, SECTION 29, T12N, R62W, 6th P.M.
 WELD COUNTY, COLORADO



UELS, LLC
 Corporate Office * 85 South 200 East
 Vernal, UT 84078 * (435) 789-1017

SURVEYED BY	GREG WEIMER, J.S.	02-10-17	SCALE
DRAWN BY	T.T.	01-13-15	1" = 1000'
MULTI-WELL PLAN		FIGURE #5	