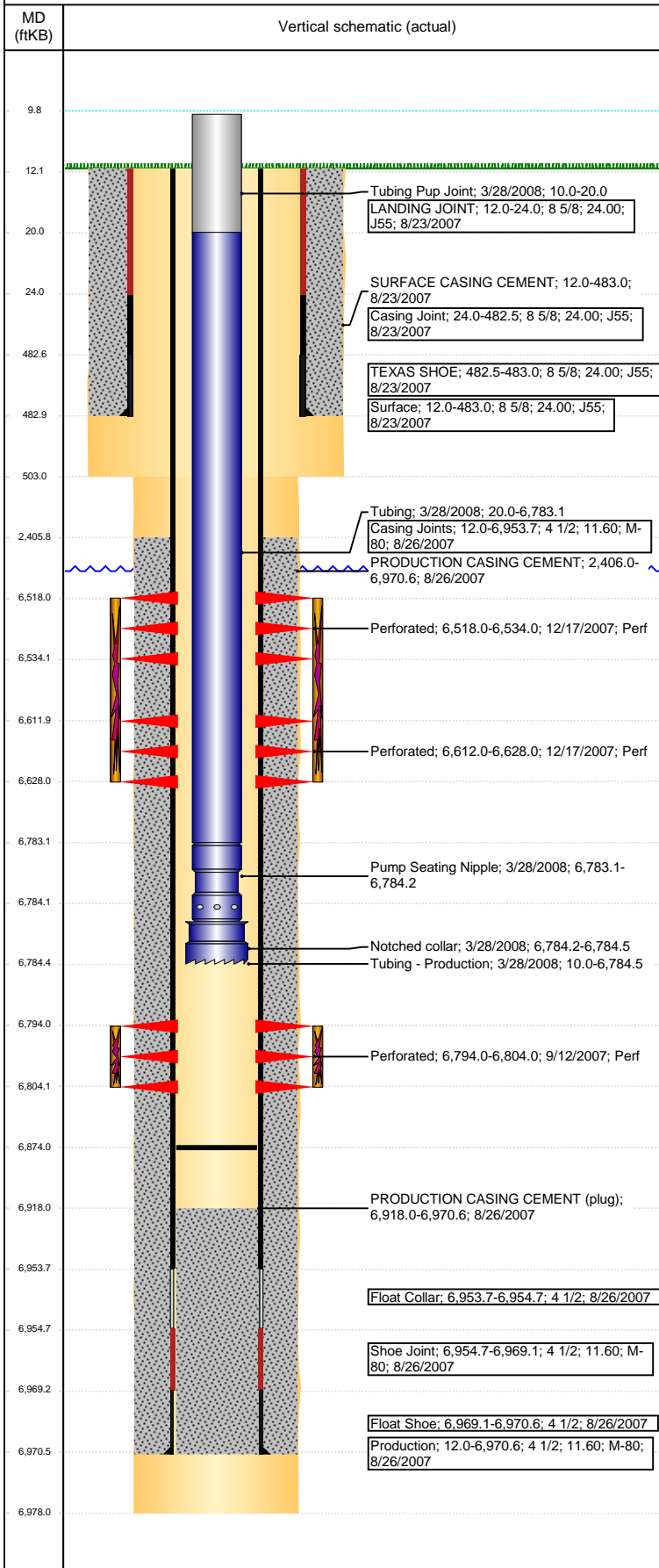


Well Name: WELLS RANCH USX BB05-10

VERTICAL - ORIGINAL HOLE, 3/29/2017 4:46:14 PM



Well Header

API 05-123-26196	Business Unit DJ BASIN	District 15	Well Config VERTICAL
Original KB Elevation (ft) 4,737	KB - GL / MSL (ftKB) 12.00	Spud Date 8/22/2007	P & A Date
Comment			

Directions To Well

WCR 67 & WCR 68, E 0.2, S TO COW CAMP, SW 0.5, S 1.0, W 1.2, N 0.1, NW 0.1 INTO

Congressional Location

Quarter 3 NW	Quarter 4 SE	Section 5	Township 5	Twnshp N/S Dir N	Range 63	Range E/W Dir W
-----------------	-----------------	--------------	---------------	---------------------	-------------	--------------------

Bottom Hole Location

North-South Distance (ft)	From N or S Line	East-West Distance (ft)	From E or W Line
---------------------------	------------------	-------------------------	------------------

Plug Back Total Depths

Date	Depth (ftKB)	Method	Com
8/26/2007	6,953.7	CASING TALLY	TOP OF FLOAT COLLAR
9/11/2007	6,918.0	CASED HOLE LOG	DEPTH LOGGER ON CBL
3/27/2008	6,874.0	TUBING TALLY	CHASED CIFT DOWN

Wellbore Sections

Section Des	Size (in)	Act Top, MD (ftKB)	Act Btm, MD (ftKB)
SURFACE	12 1/4	12	503
PRODUCTION	7 7/8	503	6,978

Zone Statuses

Zone Name	Status Date	Status	Fluid Type	Job	Prod Method
CODELL	12/20/2007	PR		DRILLING/CO...	
NIOBRARA	12/20/2007	PR		DRILLING/CO...	

Casing Strings

Surface, 483.0ftKB

Casing Description	Run Date	OD (in)	Wt/Len (l...)	Grade	Top, MD (ft...)	MD (ftKB)
Surface	8/23/2007	8 5/8	24.00	J55	12.0	483.0

Production, 6,970.6ftKB

Casing Description	Run Date	OD (in)	Wt/Len (l...)	Grade	Top, MD (ft...)	MD (ftKB)
Production	8/26/2007	4 1/2	11.60	M-80	12.0	6,970.6

Cement

Description	Top Depth (ftKB)	Bottom Depth (ftKB)
SURFACE CASING CEMENT	12.0	483.0
PRODUCTION CASING CEMENT	2,406.0	6,970.6

Tubing Strings

Tubing Description	Run Date	String...	ID (in)	Wt (lb/ft)	Grade	Len (ft)	Set De...
Tubing - Production	3/28/2008	2 3/8	2.00	4.70	J-55	6,774.52	

Tubing Components

Item Des	OD (in)	Wt (lb/ft)	Grade	Jts	Len (ft)	Btm (ftKB)	Btm (TVD) (ftKB)
Tubing Pup Joint	2 3/8	4.70	J-55	1	10.00	20.0	
Tubing	2 3/8	4.70	J-55	218	6,763.12	6,783.1	
Pump Seating Nipple	2 3/8			1	1.10	6,784.2	
Notched collar	3 1/16			1	0.30	6,784.5	

Other In Hole

Run Date	Des	OD (in)	Top (ftKB)	Btm (ftKB)

Logs

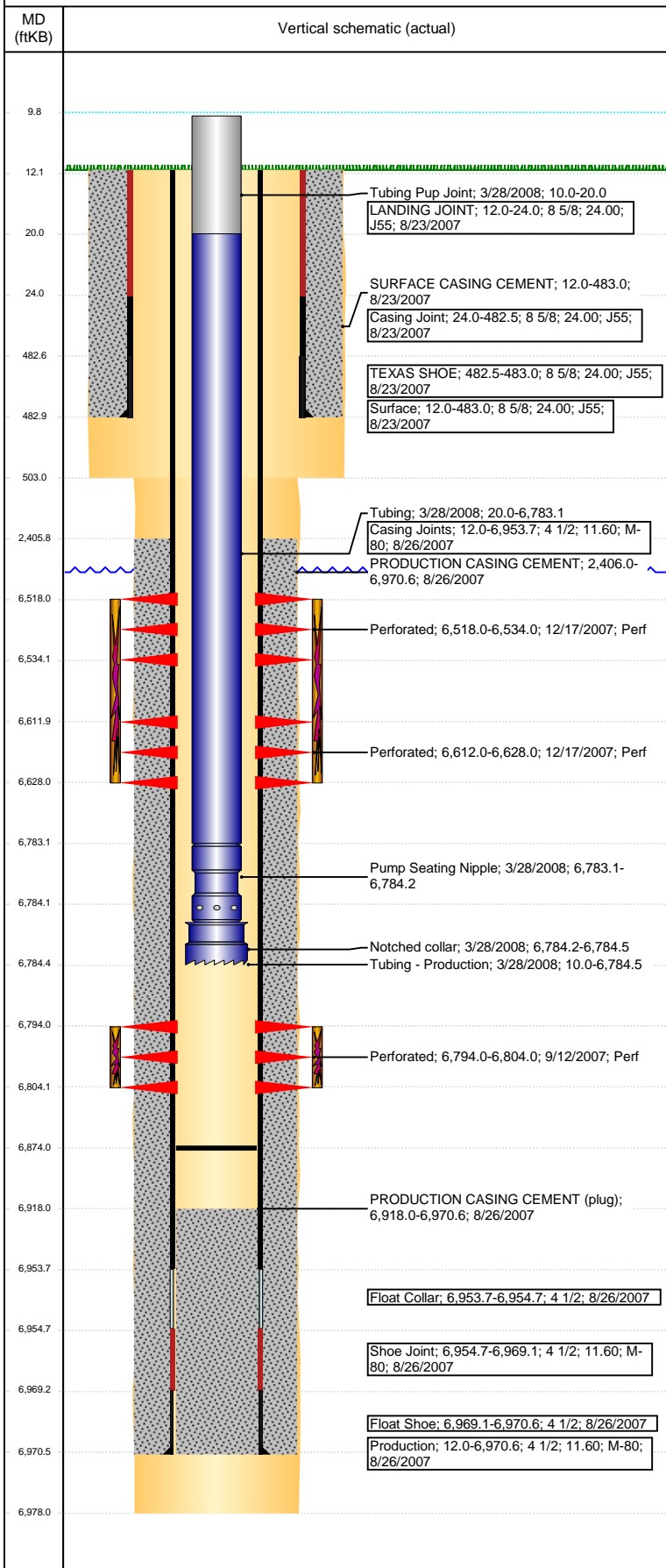
Date	Type	Top, MD (ftKB)	Btm, MD (ftKB)
8/25/2007	COMPENSATED DENSITY	2,650.0	6,958.0
8/25/2007	INDUCTION	483.0	6,978.0
9/11/2007	CBL/CCL/GR	2,250.0	6,916.0
3/6/2017	CBL/CCL/GR	2,250.0	6,918.0

Perforation Data

Linked Zone	Bnch/St g	Sum of Entered Shot Total	Top (ftKB)	Btm (ftKB)	Date
NIOBRARA, ORIGINAL HOLE		64	6,518.00	6,534.00	12/17/2007
NIOBRARA, ORIGINAL HOLE		64	6,612.00	6,628.00	12/17/2007
CODELL, ORIGINAL HOLE		40	6,794.00	6,804.00	9/12/2007

Well Name: WELLS RANCH USX BB05-10

VERTICAL - ORIGINAL HOLE, 3/29/2017 4:46:16 PM



Perforation Data					
Linked Zone	Bnch/St g	Sum of Entered Shot Total	Top (ftKB)	Btm (ftKB)	Date
Total (Sum)		168			
Stimulation Intervals					
Start Date 12/17/2007		Primary Job Type DRILLING/COMPLETION - ORIGINAL			
Technical Result		Tech Result Details		Tech Result Note	
Comment					
Start Date 12/17/2007		Primary Job Type DRILLING/COMPLETION - ORIGINAL			
Technical Result		Tech Result Details		Tech Result Note	
Comment					