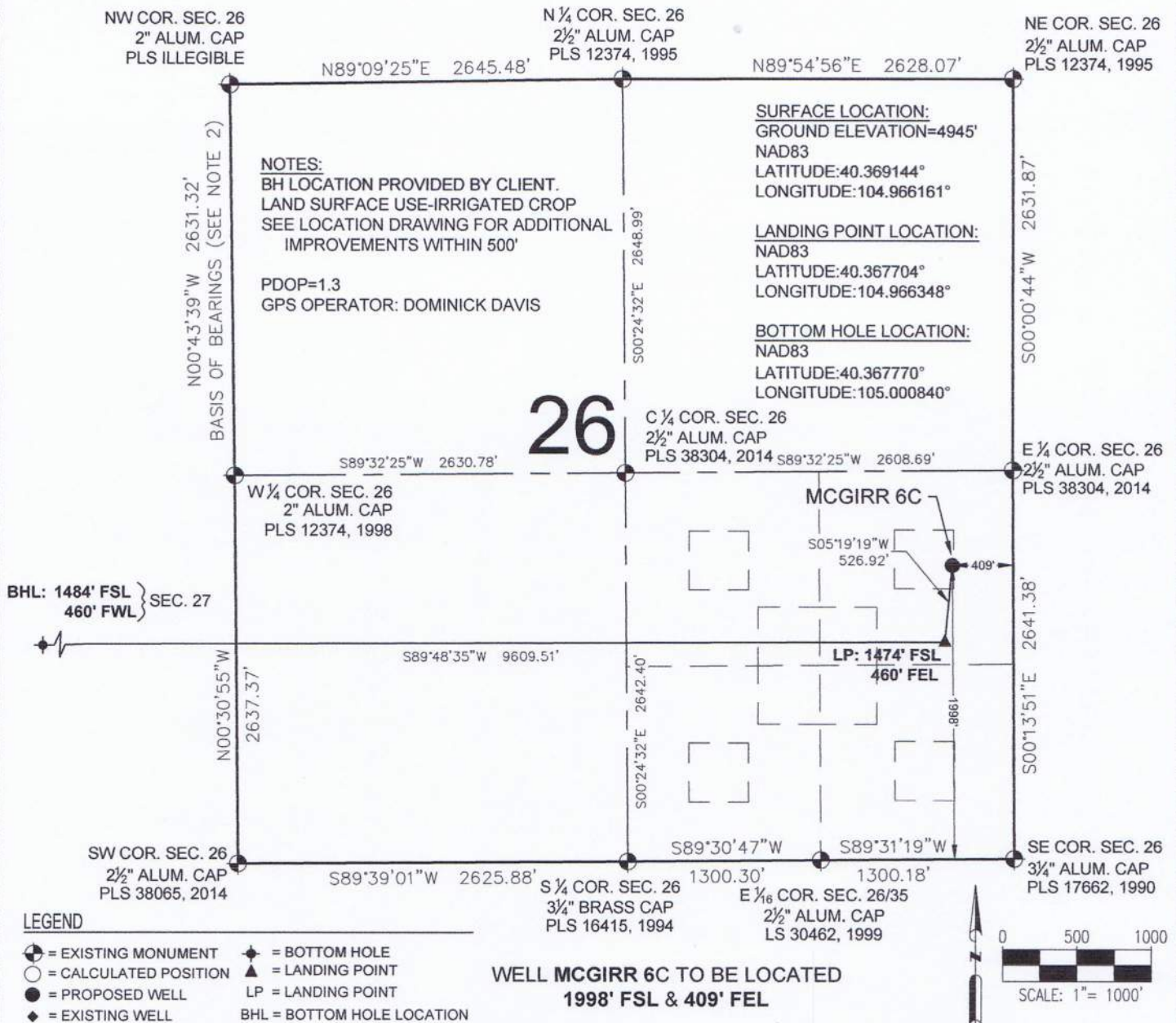


# MCGIRR 6C WELL LOCATION CERTIFICATE



- LEGEND**
- ⊕ = EXISTING MONUMENT
  - = CALCULATED POSITION
  - = PROPOSED WELL
  - ◆ = EXISTING WELL
  - ⬮ = BOTTOM HOLE
  - ▲ = LANDING POINT
  - LP = LANDING POINT
  - BHL = BOTTOM HOLE LOCATION
- NOTES:**
1. THIS FIELD SURVEY CONFORMS TO THE MINIMUM STANDARDS SET BY THE C.O.G.C.C., RULE NO. 215
  2. BEARINGS AND DISTANCE SHOWN HEREON ARE GRID AND BASED ON THE COLORADO STATE PLANE COORDINATE SYSTEM, NAD 83/2011 BETWEEN MONUMENTS AS LABELED HEREON AND ELEVATIONS SHOWN ARE NAVD 88, AS DERIVED BY GPS OBSERVATIONS.
  3. GRID DISTANCES ARE SHOWN, AS MEASURED IN THE FIELD, WITH TIES TO WELLS MEASURED PERPENDICULAR TO SECTION LINES.

NOTICE: ACCORDING TO COLORADO LAW YOU MUST COMMENCE ANY LEGAL ACTION BASED UPON ANY DEFECT IN THIS SURVEY WITHIN THREE YEARS AFTER YOU FIRST DISCOVER SUCH DEFECT. IN NO EVENT MAY ANY ACTION BASED UPON ANY DEFECT IN THIS SURVEY BE COMMENCED MORE THAN TEN YEARS FROM THIS SAID DATE OF THIS CERTIFICATION SHOWN HEREON.

I, TIM C. PAPPAS, A LICENSED PROFESSIONAL LAND SURVEYOR IN THE STATE OF COLORADO DO HEREBY CERTIFY TO EXTRACTION OIL & GAS, THAT THE SURVEY AND WELL LOCATION CERTIFICATE SHOWN HEREON WERE DONE BY ME OR UNDER MY DIRECT SUPERVISION AND THAT THE DRAWING SHOWN HEREON ACCURATELY DEPICTS THE PROPOSED LOCATION OF THE WELL. THIS CERTIFICATE DOES NOT REPRESENT A LAND SURVEY PLAT OR IMPROVEMENT SURVEY PLAT AS DEFINED BY C.R.S. 38-51-102 AND CANNOT BE RELIED UPON TO DETERMINE OWNERSHIP.

TIM C. PAPPAS, P.L.S. 38327  
FOR AND ON BEHALF OF P.F.S., LLC  
D.B.A. ASCENT GEOMATICS SOLUTIONS



SHEET 1 OF 2



2535 Hilltop Circle  
Denver, CO 80221  
(303) 928-7128  
www.ascentgeomatics.com

FIELD DATE:  
03-14-17

DRAWING DATE:  
03-15-17

BY:  
CSG

CHECKED BY:  
IJM

WELL NAME:  
MCGIRR 6C

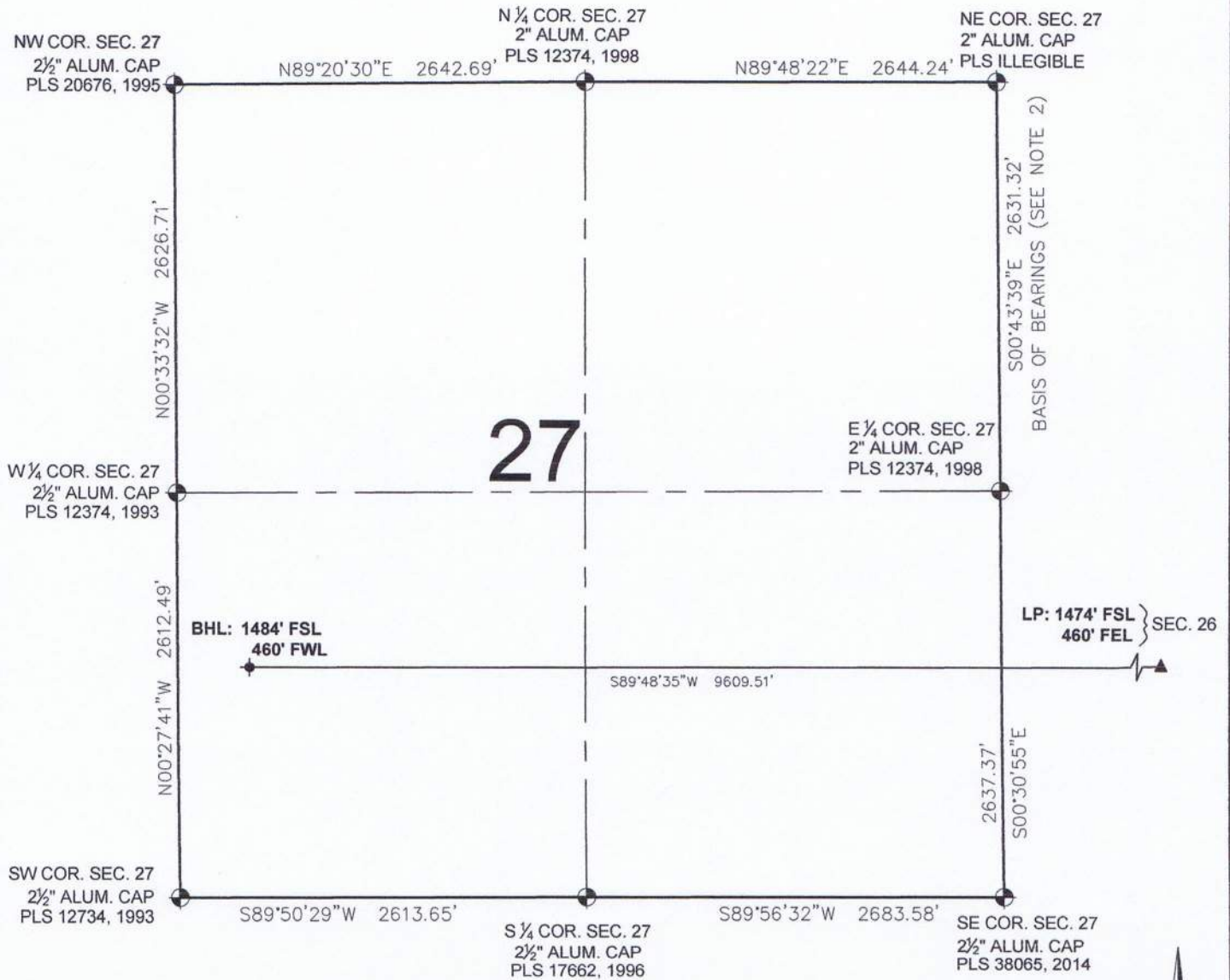
SURFACE LOCATION:

NE 1/4 SE 1/4 SEC. 26, T5N, R68W, 6TH P.M.  
LARIMER COUNTY, COLORADO

PREPARED FOR:

**EXTRACTION**  
Oil & Gas

# MCGIRR 6C WELL LOCATION CERTIFICATE



## LEGEND

- ⊕ = EXISTING MONUMENT      ◆ = BOTTOM HOLE
- = CALCULATED POSITION    ▲ = LANDING POINT
- = PROPOSED WELL        LP = LANDING POINT
- ◆ = EXISTING WELL        BHL = BOTTOM HOLE LOCATION

TIM C. PAPPAS, P.L.S. 38327  
FOR AND ON BEHALF OF P.F.S., LLC  
D.B.A. ASCENT GEOMATICS SOLUTIONS

SHEET 2 OF 2



7535 Hilltop Circle  
Denver, CO 80221  
(303) 928-7128  
www.ascentgeomatics.com

FIELD DATE:  
03-14-17

DRAWING DATE:  
03-15-17

BY:  
CSG

CHECKED BY:  
IJM

WELL NAME:  
MCGIRR 6C

SURFACE LOCATION:

NE 1/4 SE 1/4 SEC. 26, T5N, R68W, 6TH P.M.  
LARIMER COUNTY, COLORADO

PREPARED FOR

