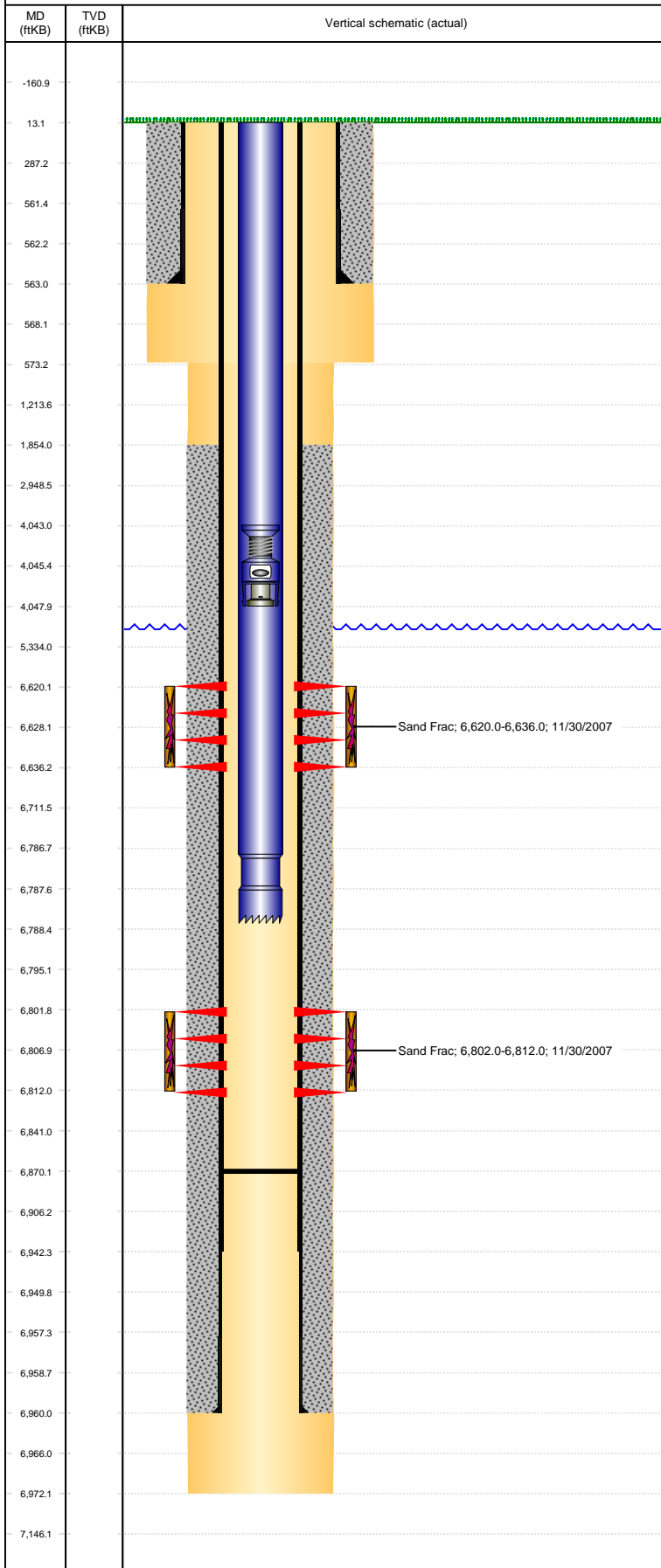


Well Name: WELLS RANCH USX AA33-15

VERTICAL - ORIGINAL HOLE, 3/23/2017 2:26:43 PM



Well Header

API 05-123-26384	Business Unit DJ BASIN	District 15	Well Config VERTICAL
Original KB Elevation (ft) 4,788	KB - GL / MSL (ftKB) 13.00	Spud Date 10/7/2007	P & A Date
Comment			

Directions To Well

Congressional Location

Quarter 3 SW	Quarter 4 SE	Section 33	Township 6	TwNS Dir N	Range 63	Range E/W Dir W
-----------------	-----------------	---------------	---------------	---------------	-------------	--------------------

Bottom Hole Location

North-South Distance (ft)	From N or S Line	East-West Distance (ft)	From E or W Line
---------------------------	------------------	-------------------------	------------------

Plug Back Total Depths

Date	Depth (ftKB)	Method	Com
10/10/2007	6,942.0	CASING TALLY	FLOAT SHOE W/COLLAR @ 6942
10/24/2007	6,921.0	CASED HOLE LOG	DEPTH LOGGER ON CBL
2/7/2008	6,870.0	TAG	TAGGED FILL @6870'

Wellbore Sections

Section Des	Size (in)	Act Top, MD (ftKB)	Act Btm, MD (ftKB)
SURFACE	12 1/4	13	573
PRODUCTION	7 7/8	573	6,972

Zone Statuses

Zone Name	Status Date	Status	Fluid Type	Job	Prod Method	
CODELL	12/3/2007	PR	Water	DRILLING/CO...	Flowing	
CODELL	1/29/2010	PR		Water		DRILLING/CO...
NIOBRARA	12/3/2007	PR				
NIOBRARA	1/29/2010	PR				
NIOBRARA	12/31/2013	PR			Flowing	

Casing Strings

Surface, 563.0ftKB

Casing Description	Run Date	OD (in)	Wt/Len (l...)	Grade	Top, MD (ft...)	MD (ftKB)
Surface	10/8/2007	8 5/8	24.00	J-55	13.0	563.0

Production, 6,960.0ftKB

Casing Description	Run Date	OD (in)	Wt/Len (l...)	Grade	Top, MD (ft...)	MD (ftKB)
Production	10/10/2007	4 1/2	11.60	M-80	13.0	6,960.0

Cement

Description	Top Depth (ftKB)	Bottom Depth (ftKB)
SURFACE CASING CEMENT	13.0	563.0
Description	Top Depth (ftKB)	Bottom Depth (ftKB)
PRODUCTION CASING CEMENT	1,854.0	6,960.0

Tubing Strings

Tubing Description	Run Date	String...	ID (in)	Wt (lb/ft)	Grade	Len (ft)	Set De...
Tubing - Production	2/8/2008	2 3/8		4.70	J-55	6,775.24	

Tubing Components

Item Des	OD (in)	Wt (lb/ft)	Grade	Jts	Len (ft)	Btm (ftKB)	Btm (TVD) (ftKB)
EUE 8rd Tubing	2 3/8	4.70	J-55	675 6	6,773.84	6,786.8	
Notched collar	2 3/8				1.40	6,788.2	

Other In Hole

Run Date	Des	OD (in)	Top (ftKB)	Btm (ftKB)
5/22/2012	Stage Tool	2	4,043.0	4,048.0

Logs

Date	Type	Top, MD (ftKB)	Btm, MD (ftKB)
10/10/2007	COMPENSATED DENSITY	2,750.0	6,942.0
10/10/2007	INDUCTION	13.0	6,962.0
10/24/2007	CBL/CCL/GR	1,730.0	6,914.0
10/24/2007	GYRO	12.0	6,700.0

Perforation Data

Linked Zone	Bnch/St g	Sum of Entered Shot Total	Top (ftKB)	Btm (ftKB)	Date
NIOBRARA, ORIGINAL HOLE	A	64	6,620.00	6,636.00	11/30/2007
CODELL, ORIGINAL HOLE		40	6,802.00	6,812.00	10/25/2007
Total (Sum)		104			

Well Name: WELLS RANCH USX AA33-15

VERTICAL - ORIGINAL HOLE, 3/23/2017 2:26:46 PM

Stimulation Intervals

Interval...	Start Date	Primary Job Type	Zone
1	11/30/2007	DRILLING/COMPLETION - ORIGINAL	NIOBRARA, ORIGINAL HOLE

Technical Result	Tech Result Details	Tech Result Note
------------------	---------------------	------------------

Comment

Interval...	Start Date	Primary Job Type	Zone
2	11/30/2007	DRILLING/COMPLETION - ORIGINAL	CODELL, ORIGINAL HOLE

Technical Result	Tech Result Details	Tech Result Note
------------------	---------------------	------------------

Comment

