

# SYNERGY RESOURCES CORPORATION

Location: COLORADO Slot: SLOT#20 GOETZEL 13N-30C-M (2177'FSL & 2053'FWL, SEC.29)  
Field: WELD COUNTY (NAD83,TRUE NORTH) Well: GOETZEL 13N-30C-M  
Facility: SEC.29-T06N-R66W Wellbore: GOETZEL 13N-30C-M PWB

Plot reference wellpath is GOETZEL 13N-30C-M REV-A.0 PWP

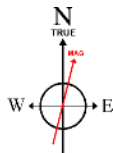
True vertical depths are referenced to H&P 562 (25) (RKB)	* = Wellpath was transformed from a different geodetic datum
Measured depths are referenced to H&P 562 (25) (RKB)	North Reference: True north
H&P 562 (25) (RKB) to Mean Sea Level: 4757 feet	Scale: True distance
Mean Sea Level to Mud line (At Slot: SLOT#20 GOETZEL 13N-30C-M (2177'FSL & 2053'FWL, SEC.29)): 0 feet	Depths are in feet
Coordinates are in feet referenced to Slot	Created by: wagnjam on 2017-02-27
	Database: WA_DEN_Denver_Deln

## Location Information

Facility Name				Grid East (US ft)	Grid North (US ft)	Latitude	Longitude
SEC 29-T06N-R66W				3194449.646	1411672.008	40°27'40.817"N	104°48'04.259"W
Slot	Local N (ft)	Local E (ft)	Grid East (US ft)	Grid North (US ft)	Latitude	Longitude	
SLOT#20 GOETZEL 13N-30C-M (2177FSL & 2053FWL, SEC 29)	-1322.45	-822.33	3193637.796	1410343.167	40°27'27.749"N	104°48'14.897"W	
H&P 562 (25) (RKB) to Mud line (At Slot: SLOT#20 GOETZEL 13N-30C-M (2177FSL & 2053FWL, SEC 29))						4757ft	
Mean Sea Level to Mud line (At Slot: SLOT#20 GOETZEL 13N-30C-M (2177FSL & 2053FWL, SEC 29))						0ft	
H&P 562 (25) (RKB) to Mean Sea Level						4757ft	

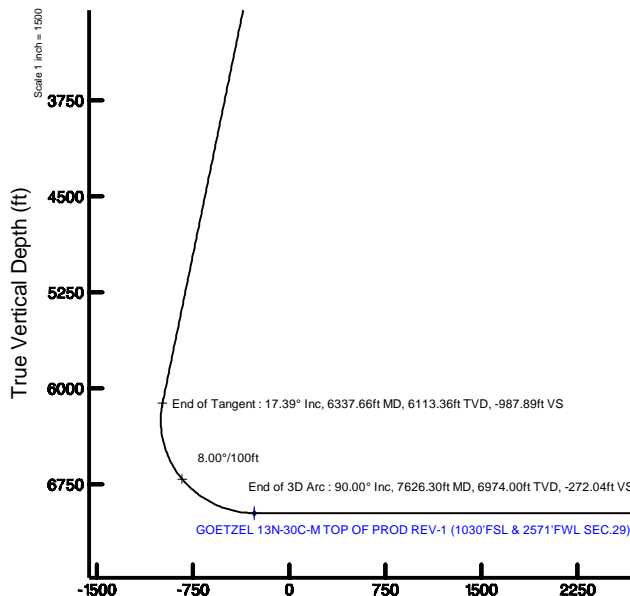
## Tie-On Position

MD (ft)	Inc (°)	Az (°)	TVD (ft)	Local N (ft)	Local E (ft)	Grid East (US ft)	Grid North (US ft)	Latitude	Longitude
25.00	0.000	127.460	25.00	0.00	0.00	3193637.80	1410343.17	40°27'27.749"N	104°48'14.897"W



BGGM (1900.0 to 2018.0) Dip: 66.92° Field: 52499.6 nT  
Magnetic North is 8.43 degrees East of True North (at 2/22/2017)

To correct azimuth from Magnetic to True add 8.43 degrees



Vertical Section (ft)  
Azimuth 258.29° with reference 0.00 N, 0.00 E

## Well Profile Data

Design Comment	MD (ft)	Inc (°)	Az (°)	TVD (ft)	Local N (ft)	Local E (ft)	DLS (°/100ft)	VS (ft)
Tie On	25.00	0.000	127.460	25.00	0.00	0.00	0.00	0.00
End of Tangent	850.00	0.000	127.460	850.00	0.00	0.00	0.00	0.00
End of Build	1719.36	17.387	127.460	1706.08	-79.61	103.91	2.00	-85.58
End of Tangent	6337.66	17.387	127.460	6113.36	-918.98	1199.39	0.00	-987.89
End of 3D Arc	7626.30	90.000	266.743	6974.00	-1134.13	512.92	8.00	-272.04
End of Tangent	15888.79	90.000	266.743	6974.00	-1603.62	-7736.23	0.00	7900.68

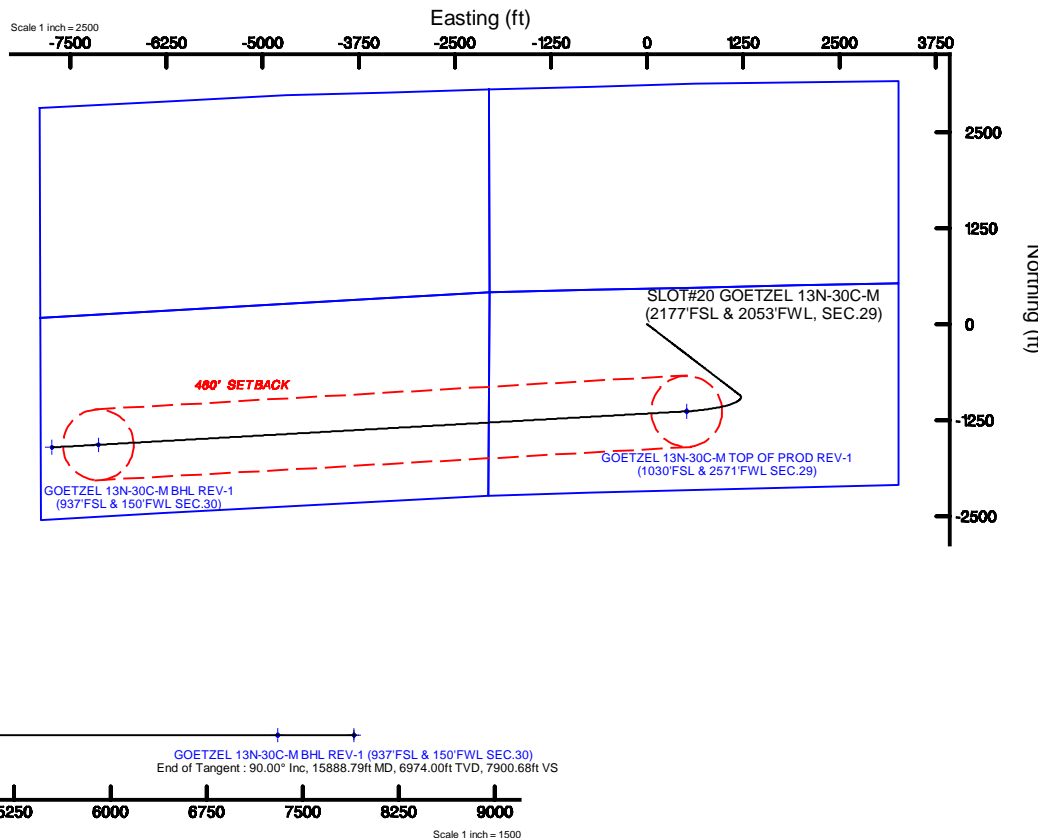
## Survey Program

Start MD (ft)	End MD (ft)	Tool	Model	Log Name/Comment	Wellbore
25.00	1700.00	BHI NewTrak	Custom BHI NewTrak (Standard Rotating+Axial Corr) (Rockies 0.03Gr model)		GOETZEL 13N-30C-M PWB
1700.00	15888.79	BHI AutoTrak Curve	Custom BHI AutoTrak Curve (IFR1, Short) (Rockies 0.03Gr model)		GOETZEL 13N-30C-M PWB

## Targets

Name	MD (ft)	TVD (ft)	Local N (ft)	Local E (ft)	Grid East (US ft)	Grid North (US ft)	Latitude	Longitude
SEC.29-T06N-REEV-NORTH-ERN	9.00	1322.46	822.30		3194449.66	1411671.99	40°27'40.817"N	104°48'04.259"W
SEC.29-T06N-REEV-SOUTH-ERN	9.00	1322.46	822.30		3194449.66	1411671.99	40°27'40.817"N	104°48'04.259"W
SEC.30-T06N-REEV-NORTH-ERN	9.00	1322.46	822.30		3194449.66	1411671.99	40°27'40.817"N	104°48'04.259"W
SEC.30-T06N-REEV-SOUTH-ERN	9.00	1322.46	822.30		3194449.66	1411671.99	40°27'40.817"N	104°48'04.259"W
GOETZEL 13N-30C-M BHL ON PLAT (937'FSL & 751'FWL SEC.30)		6974.00	-1570.65	-7136.36	3186515.25	1408716.64	40°27'12.218"N	104°49'47.197"W
GOETZEL 13N-30C-M BHL REV-1 (937'FSL & 150'FWL SEC.30)	15888.79	6974.00	-1603.62	-7736.23	3185914.69	1408678.95	40°27'11.891"N	104°49'54.970"W
GOETZEL 13N-30C-M TOP OF PROD REV-1 (1030'FSL & 2571'FWL SEC.29)	7626.30	6974.00	-1134.13	512.92	3194159.58	1409213.14	40°27'16.542"N	104°48'08.262"W

Scale 1 inch = 2500

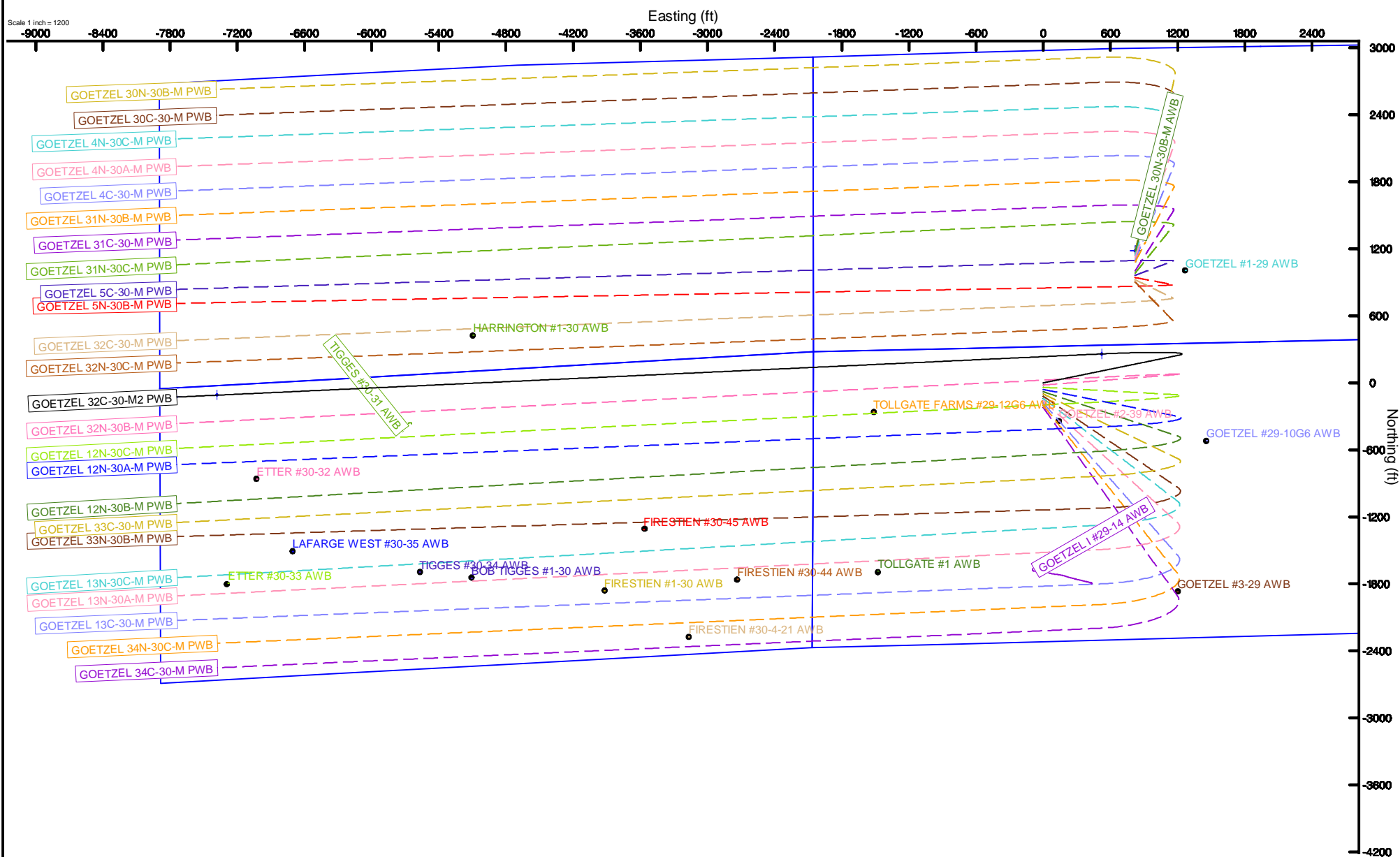


Location:	COLORADO	Slot:	SLOT#13 GOETZEL 32C-30-M2 (2317'FSL & 2053'FWL SEC.29
Field:	WELD COUNTY (NAD83,TRUE NORTH)	Well:	GOETZEL 32C-30-M2
Facility:	SEC.29-T06N-R66W	Wellbore:	GOETZEL 32C-30-M2 PWB



BGM (1900.0 to 2018.0) Dip: 66.92° Field: 52499.6 nT  
Magnetic North is 8.43 degrees East of True North (at 2/22/2017)

To correct azimuth from Magnetic to True add 8.43 degrees



GOETZEL\_13N-30C-M\_REV-A.0\_PWP.1as

~VERSION INFORMATION

VERS. 2.0 : CWLS LOG ASCII STANDARD-VERSION 2.0  
 WRAP. NO : ASCII DATA SECTION CONTAINS ONE ROW PER WELLPATH STATION

~WELL INFORMATION

#MNEM	.UNITS	DATA	:DESCRIPTION
#----	.-----	----	:-----
STRT	.ft	0.00	:START MD
STOP	.ft	15888.79	:STOP MD
STEP	.ft	0.0	:STEP (non-uniform increment)
NULL	.	-999.99	:NULL
COMP	.	SYNERGY RESOURCES CORPORATION	:OPERATOR
WELL	.	GOETZEL 13N-30C-M	:WELL
FLD	.	WELD COUNTY (NAD83,TRUE NORTH)	:FIELD
LOC	.	COLORADO	:AREA (aka: Location)
CNTY	.	N/A	:COUNTY
STAT	.	N/A	:STATE
CTRY	.	N/A	:COUNTRY
SRVC	.	Baker Hughes	:CONTRACTOR
DATE	.	02/23/2017	:LOG REV DATE
API	.		:API NUMBER

~OTHER INFORMATION

#Software: wellArchitect(R) Version 5.0

#MNEM	.UNITS	DATA	:DESCRIPTION
#----	.-----	----	:-----
WPTYPE	.	PLANNED WELLPATH	:WELLPATH TYPE
FACILITY	.	SEC.29-T06N-R66W	:FACILITY
SLOT	.	SLOT#20 GOETZEL 13N-30C-M (2177'FSL & 2053'FWL, SEC.29):SLOT	:SLOT
WELLBORE	.	GOETZEL 13N-30C-M PWB	:WELLBORE
WELLPATH	.	GOETZEL 13N-30C-M REV-A.0 PWP	:WELLPATH
MDREFPT	.	H&P 562 (25') (RKB)	:MD REFERENCE POINT
TVDREFPT	.	H&P 562 (25') (RKB)	:TVD REFERENCE POINT
LCLREFPT	.	slot	:LOCAL COORDINATE REFERENCE PT
VSAZIMUTH.deg		258.29	:VERTICAL SECTION AZIMUTH
VSORIGN .ft		0.00	:VERTICAL SECTION ORIGIN NORTH
VSORIGE .ft		0.00	:VERTICAL SECTION ORIGIN EAST

~CURVE (WELLPATH) INFORMATION

#MNEM	.UNITS	:DESCRIPTION
#----	.-----	:-----
DEPT	.ft	:MEASURED DEPTH
INC	.deg	:INCLINATION
AZI	.deg	:AZIMUTH

GOETZEL\_13N-30C-M\_REV-A.0\_PWP.1as

TVD .ft :TRUE VERTICAL DEPTH  
 SECT .ft :CROSS SECTION (CURTAIN/VERTICAL)  
 LOCALN .ft :LOCAL NORTH  
 LOCALE .ft :LOCAL EAST  
 LAT .deg :LATITUDE  
 LONG .deg :LONGITUDE  
 DLS .deg/100ft :DOGLEG SEVERITY

~ASCII DATA

0.00	0.00	127.46	0.00	0.00	0.00	0.00	40.4577081	-104.8041381	0.00
25.00	0.00	127.46	25.00	0.00	0.00	0.00	40.4577081	-104.8041381	0.00
125.00	0.00	127.46	125.00	0.00	0.00	0.00	40.4577081	-104.8041381	0.00
225.00	0.00	127.46	225.00	0.00	0.00	0.00	40.4577081	-104.8041381	0.00
325.00	0.00	127.46	325.00	0.00	0.00	0.00	40.4577081	-104.8041381	0.00
425.00	0.00	127.46	425.00	0.00	0.00	0.00	40.4577081	-104.8041381	0.00
525.00	0.00	127.46	525.00	0.00	0.00	0.00	40.4577081	-104.8041381	0.00
625.00	0.00	127.46	625.00	0.00	0.00	0.00	40.4577081	-104.8041381	0.00
725.00	0.00	127.46	725.00	0.00	0.00	0.00	40.4577081	-104.8041381	0.00
825.00	0.00	127.46	825.00	0.00	0.00	0.00	40.4577081	-104.8041381	0.00
850.00	0.00	127.46	850.00	0.00	0.00	0.00	40.4577081	-104.8041381	0.00
925.00	1.50	127.46	924.99	-0.64	-0.60	0.78	40.4577064	-104.8041353	2.00
1025.00	3.50	127.46	1024.89	-3.49	-3.25	4.24	40.4576991	-104.8041228	2.00
1125.00	5.50	127.46	1124.58	-8.62	-8.02	10.47	40.4576860	-104.8041004	2.00
1225.00	7.50	127.46	1223.93	-16.02	-14.91	19.45	40.4576671	-104.8040681	2.00
1325.00	9.50	127.46	1322.83	-25.69	-23.90	31.19	40.4576425	-104.8040260	2.00
1425.00	11.50	127.46	1421.15	-37.60	-34.98	45.65	40.4576120	-104.8039740	2.00
1525.00	13.50	127.46	1518.77	-51.75	-48.14	62.83	40.4575759	-104.8039123	2.00
1625.00	15.50	127.46	1615.58	-68.12	-63.37	82.71	40.4575341	-104.8038409	2.00
1719.36	17.39	127.46	1706.08	-85.58	-79.61	103.91	40.4574895	-104.8037647	2.00
1725.00	17.39	127.46	1711.46	-86.69	-80.64	105.24	40.4574867	-104.8037599	0.00
1825.00	17.39	127.46	1806.89	-106.22	-98.81	128.96	40.4574368	-104.8036746	0.00
1925.00	17.39	127.46	1902.32	-125.76	-116.99	152.69	40.4573869	-104.8035894	0.00
2025.00	17.39	127.46	1997.75	-145.30	-135.16	176.41	40.4573370	-104.8035042	0.00
2125.00	17.39	127.46	2093.18	-164.84	-153.34	200.13	40.4572872	-104.8034189	0.00
2225.00	17.39	127.46	2188.61	-184.37	-171.51	223.85	40.4572373	-104.8033337	0.00
2325.00	17.39	127.46	2284.04	-203.91	-189.69	247.57	40.4571874	-104.8032484	0.00
2425.00	17.39	127.46	2379.48	-223.45	-207.86	271.29	40.4571375	-104.8031632	0.00
2525.00	17.39	127.46	2474.91	-242.99	-226.04	295.01	40.4570876	-104.8030780	0.00
2625.00	17.39	127.46	2570.34	-262.53	-244.21	318.73	40.4570377	-104.8029927	0.00
2725.00	17.39	127.46	2665.77	-282.06	-262.39	342.45	40.4569878	-104.8029075	0.00
2825.00	17.39	127.46	2761.20	-301.60	-280.56	366.17	40.4569379	-104.8028223	0.00
2925.00	17.39	127.46	2856.63	-321.14	-298.74	389.89	40.4568881	-104.8027370	0.00
3025.00	17.39	127.46	2952.06	-340.68	-316.91	413.61	40.4568382	-104.8026518	0.00
3125.00	17.39	127.46	3047.49	-360.21	-335.08	437.33	40.4567883	-104.8025666	0.00

GOETZEL\_13N-30C-M\_REV-A.0\_PWP.1as

3225.00	17.39	127.46	3142.92	-379.75	-353.26	461.05	40.4567384	-104.8024813	0.00
3325.00	17.39	127.46	3238.35	-399.29	-371.43	484.77	40.4566885	-104.8023961	0.00
3425.00	17.39	127.46	3333.78	-418.83	-389.61	508.49	40.4566386	-104.8023108	0.00
3525.00	17.39	127.46	3429.21	-438.36	-407.78	532.21	40.4565887	-104.8022256	0.00
3625.00	17.39	127.46	3524.64	-457.90	-425.96	555.93	40.4565388	-104.8021404	0.00
3725.00	17.39	127.46	3620.07	-477.44	-444.13	579.65	40.4564889	-104.8020551	0.00
3825.00	17.39	127.46	3715.51	-496.98	-462.31	603.37	40.4564391	-104.8019699	0.00
3925.00	17.39	127.46	3810.94	-516.51	-480.48	627.09	40.4563892	-104.8018847	0.00
4025.00	17.39	127.46	3906.37	-536.05	-498.66	650.81	40.4563393	-104.8017994	0.00
4125.00	17.39	127.46	4001.80	-555.59	-516.83	674.53	40.4562894	-104.8017142	0.00
4225.00	17.39	127.46	4097.23	-575.13	-535.01	698.25	40.4562395	-104.8016290	0.00
4325.00	17.39	127.46	4192.66	-594.67	-553.18	721.97	40.4561896	-104.8015437	0.00
4425.00	17.39	127.46	4288.09	-614.20	-571.36	745.69	40.4561397	-104.8014585	0.00
4525.00	17.39	127.46	4383.52	-633.74	-589.53	769.41	40.4560898	-104.8013733	0.00
4625.00	17.39	127.46	4478.95	-653.28	-607.71	793.14	40.4560399	-104.8012880	0.00
4725.00	17.39	127.46	4574.38	-672.82	-625.88	816.86	40.4559901	-104.8012028	0.00
4825.00	17.39	127.46	4669.81	-692.35	-644.05	840.58	40.4559402	-104.8011176	0.00
4925.00	17.39	127.46	4765.24	-711.89	-662.23	864.30	40.4558903	-104.8010323	0.00
5025.00	17.39	127.46	4860.67	-731.43	-680.40	888.02	40.4558404	-104.8009471	0.00
5125.00	17.39	127.46	4956.11	-750.97	-698.58	911.74	40.4557905	-104.8008619	0.00
5225.00	17.39	127.46	5051.54	-770.50	-716.75	935.46	40.4557406	-104.8007766	0.00
5325.00	17.39	127.46	5146.97	-790.04	-734.93	959.18	40.4556907	-104.8006914	0.00
5425.00	17.39	127.46	5242.40	-809.58	-753.10	982.90	40.4556408	-104.8006062	0.00
5525.00	17.39	127.46	5337.83	-829.12	-771.28	1006.62	40.4555909	-104.8005209	0.00
5625.00	17.39	127.46	5433.26	-848.66	-789.45	1030.34	40.4555411	-104.8004357	0.00
5725.00	17.39	127.46	5528.69	-868.19	-807.63	1054.06	40.4554912	-104.8003505	0.00
5825.00	17.39	127.46	5624.12	-887.73	-825.80	1077.78	40.4554413	-104.8002652	0.00
5925.00	17.39	127.46	5719.55	-907.27	-843.98	1101.50	40.4553914	-104.8001800	0.00
6025.00	17.39	127.46	5814.98	-926.81	-862.15	1125.22	40.4553415	-104.8000948	0.00
6125.00	17.39	127.46	5910.41	-946.34	-880.33	1148.94	40.4552916	-104.8000095	0.00
6225.00	17.39	127.46	6005.84	-965.88	-898.50	1172.66	40.4552417	-104.7999243	0.00
6325.00	17.39	127.46	6101.27	-985.42	-916.68	1196.38	40.4551918	-104.7998391	0.00
6337.66	17.39	127.46	6113.36	-987.89	-918.98	1199.39	40.4551855	-104.7998283	0.00
6425.00	13.04	148.63	6197.68	-999.75	-935.35	1214.89	40.4551406	-104.7997726	8.00
6525.00	11.70	186.14	6295.51	-1000.45	-955.09	1219.69	40.4550864	-104.7997553	8.00
6625.00	15.16	217.82	6392.89	-987.37	-975.53	1210.57	40.4550303	-104.7997881	8.00
6725.00	21.19	234.95	6487.92	-960.78	-996.27	1187.72	40.4549733	-104.7998702	8.00
6825.00	28.19	244.34	6578.76	-921.19	-1016.92	1151.57	40.4549167	-104.8000001	8.00
6925.00	35.59	250.16	6663.63	-869.38	-1037.05	1102.83	40.4548614	-104.8001752	8.00
7025.00	43.17	254.17	6740.88	-806.36	-1056.30	1042.46	40.4548086	-104.8003922	8.00
7125.00	50.87	257.18	6809.01	-733.34	-1074.27	971.61	40.4547593	-104.8006468	8.00
7225.00	58.62	259.59	6866.70	-651.76	-1090.62	891.68	40.4547144	-104.8009340	8.00
7325.00	66.41	261.63	6912.82	-563.19	-1105.03	804.22	40.4546748	-104.8012482	8.00
7425.00	74.23	263.44	6946.47	-469.37	-1117.23	710.93	40.4546414	-104.8015835	8.00

GOETZEL\_13N-30C-M\_REV-A.0\_PWP.1as

7525.00	82.06	265.11	6966.99	-372.12	-1126.96	613.63	40.4546147	-104.8019331	8.00
7625.00	89.90	266.72	6974.00	-273.33	-1134.06	514.21	40.4545952	-104.8022903	8.00
7626.30	90.00	266.74	6974.00	-272.04	-1134.13	512.92	40.4545950	-104.8022950	8.00
7725.00	90.00	266.74	6974.00	-174.41	-1139.74	414.37	40.4545796	-104.8026491	0.00
7825.00	90.00	266.74	6974.00	-75.50	-1145.42	314.54	40.4545640	-104.8030078	0.00
7925.00	90.00	266.74	6974.00	23.41	-1151.10	214.70	40.4545484	-104.8033666	0.00
8025.00	90.00	266.74	6974.00	122.33	-1156.78	114.86	40.4545328	-104.8037253	0.00
8125.00	90.00	266.74	6974.00	221.24	-1162.47	15.02	40.4545172	-104.8040841	0.00
8225.00	90.00	266.74	6974.00	320.15	-1168.15	-84.82	40.4545016	-104.8044428	0.00
8325.00	90.00	266.74	6974.00	419.07	-1173.83	-184.66	40.4544860	-104.8048016	0.00
8425.00	90.00	266.74	6974.00	517.98	-1179.51	-284.49	40.4544704	-104.8051603	0.00
8525.00	90.00	266.74	6974.00	616.89	-1185.20	-384.33	40.4544548	-104.8055191	0.00
8625.00	90.00	266.74	6974.00	715.81	-1190.88	-484.17	40.4544392	-104.8058778	0.00
8725.00	90.00	266.74	6974.00	814.72	-1196.56	-584.01	40.4544236	-104.8062366	0.00
8825.00	90.00	266.74	6974.00	913.63	-1202.24	-683.85	40.4544080	-104.8065953	0.00
8925.00	90.00	266.74	6974.00	1012.55	-1207.92	-783.69	40.4543924	-104.8069541	0.00
9025.00	90.00	266.74	6974.00	1111.46	-1213.61	-883.52	40.4543768	-104.8073128	0.00
9125.00	90.00	266.74	6974.00	1210.38	-1219.29	-983.36	40.4543612	-104.8076715	0.00
9225.00	90.00	266.74	6974.00	1309.29	-1224.97	-1083.20	40.4543456	-104.8080303	0.00
9325.00	90.00	266.74	6974.00	1408.20	-1230.65	-1183.04	40.4543300	-104.8083890	0.00
9425.00	90.00	266.74	6974.00	1507.12	-1236.33	-1282.88	40.4543144	-104.8087478	0.00
9525.00	90.00	266.74	6974.00	1606.03	-1242.02	-1382.72	40.4542988	-104.8091065	0.00
9625.00	90.00	266.74	6974.00	1704.94	-1247.70	-1482.56	40.4542832	-104.8094653	0.00
9725.00	90.00	266.74	6974.00	1803.86	-1253.38	-1582.39	40.4542675	-104.8098240	0.00
9825.00	90.00	266.74	6974.00	1902.77	-1259.06	-1682.23	40.4542519	-104.8101828	0.00
9925.00	90.00	266.74	6974.00	2001.68	-1264.75	-1782.07	40.4542363	-104.8105415	0.00
10025.00	90.00	266.74	6974.00	2100.60	-1270.43	-1881.91	40.4542207	-104.8109003	0.00
10125.00	90.00	266.74	6974.00	2199.51	-1276.11	-1981.75	40.4542051	-104.8112590	0.00
10225.00	90.00	266.74	6974.00	2298.42	-1281.79	-2081.59	40.4541895	-104.8116177	0.00
10325.00	90.00	266.74	6974.00	2397.34	-1287.47	-2181.42	40.4541738	-104.8119765	0.00
10425.00	90.00	266.74	6974.00	2496.25	-1293.16	-2281.26	40.4541582	-104.8123352	0.00
10525.00	90.00	266.74	6974.00	2595.17	-1298.84	-2381.10	40.4541426	-104.8126940	0.00
10625.00	90.00	266.74	6974.00	2694.08	-1304.52	-2480.94	40.4541270	-104.8130527	0.00
10725.00	90.00	266.74	6974.00	2792.99	-1310.20	-2580.78	40.4541113	-104.8134115	0.00
10825.00	90.00	266.74	6974.00	2891.91	-1315.88	-2680.62	40.4540957	-104.8137702	0.00
10925.00	90.00	266.74	6974.00	2990.82	-1321.57	-2780.46	40.4540801	-104.8141289	0.00
11025.00	90.00	266.74	6974.00	3089.73	-1327.25	-2880.29	40.4540645	-104.8144877	0.00
11125.00	90.00	266.74	6974.00	3188.65	-1332.93	-2980.13	40.4540488	-104.8148464	0.00
11225.00	90.00	266.74	6974.00	3287.56	-1338.61	-3079.97	40.4540332	-104.8152052	0.00
11325.00	90.00	266.74	6974.00	3386.47	-1344.30	-3179.81	40.4540176	-104.8155639	0.00
11425.00	90.00	266.74	6974.00	3485.39	-1349.98	-3279.65	40.4540019	-104.8159227	0.00
11525.00	90.00	266.74	6974.00	3584.30	-1355.66	-3379.49	40.4539863	-104.8162814	0.00
11625.00	90.00	266.74	6974.00	3683.21	-1361.34	-3479.32	40.4539707	-104.8166401	0.00
11725.00	90.00	266.74	6974.00	3782.13	-1367.02	-3579.16	40.4539550	-104.8169989	0.00

GOETZEL_13N-30C-M_REV-A.0_PWP.1as									
11825.00	90.00	266.74	6974.00	3881.04	-1372.71	-3679.00	40.4539394	-104.8173576	0.00
11925.00	90.00	266.74	6974.00	3979.96	-1378.39	-3778.84	40.4539238	-104.8177164	0.00
12025.00	90.00	266.74	6974.00	4078.87	-1384.07	-3878.68	40.4539081	-104.8180751	0.00
12125.00	90.00	266.74	6974.00	4177.78	-1389.75	-3978.52	40.4538925	-104.8184339	0.00
12225.00	90.00	266.74	6974.00	4276.70	-1395.44	-4078.35	40.4538768	-104.8187926	0.00
12325.00	90.00	266.74	6974.00	4375.61	-1401.12	-4178.19	40.4538612	-104.8191513	0.00
12425.00	90.00	266.74	6974.00	4474.52	-1406.80	-4278.03	40.4538456	-104.8195101	0.00
12525.00	90.00	266.74	6974.00	4573.44	-1412.48	-4377.87	40.4538299	-104.8198688	0.00
12625.00	90.00	266.74	6974.00	4672.35	-1418.16	-4477.71	40.4538143	-104.8202276	0.00
12725.00	90.00	266.74	6974.00	4771.26	-1423.85	-4577.55	40.4537986	-104.8205863	0.00
12825.00	90.00	266.74	6974.00	4870.18	-1429.53	-4677.39	40.4537830	-104.8209450	0.00
12925.00	90.00	266.74	6974.00	4969.09	-1435.21	-4777.22	40.4537673	-104.8213038	0.00
13025.00	90.00	266.74	6974.00	5068.00	-1440.89	-4877.06	40.4537517	-104.8216625	0.00
13125.00	90.00	266.74	6974.00	5166.92	-1446.57	-4976.90	40.4537360	-104.8220213	0.00
13225.00	90.00	266.74	6974.00	5265.83	-1452.26	-5076.74	40.4537204	-104.8223800	0.00
13325.00	90.00	266.74	6974.00	5364.75	-1457.94	-5176.58	40.4537047	-104.8227387	0.00
13425.00	90.00	266.74	6974.00	5463.66	-1463.62	-5276.42	40.4536891	-104.8230975	0.00
13525.00	90.00	266.74	6974.00	5562.57	-1469.30	-5376.25	40.4536734	-104.8234562	0.00
13625.00	90.00	266.74	6974.00	5661.49	-1474.99	-5476.09	40.4536577	-104.8238150	0.00
13725.00	90.00	266.74	6974.00	5760.40	-1480.67	-5575.93	40.4536421	-104.8241737	0.00
13825.00	90.00	266.74	6974.00	5859.31	-1486.35	-5675.77	40.4536264	-104.8245324	0.00
13925.00	90.00	266.74	6974.00	5958.23	-1492.03	-5775.61	40.4536108	-104.8248912	0.00
14025.00	90.00	266.74	6974.00	6057.14	-1497.71	-5875.45	40.4535951	-104.8252499	0.00
14125.00	90.00	266.74	6974.00	6156.05	-1503.40	-5975.29	40.4535794	-104.8256086	0.00
14225.00	90.00	266.74	6974.00	6254.97	-1509.08	-6075.12	40.4535638	-104.8259674	0.00
14325.00	90.00	266.74	6974.00	6353.88	-1514.76	-6174.96	40.4535481	-104.8263261	0.00
14425.00	90.00	266.74	6974.00	6452.79	-1520.44	-6274.80	40.4535324	-104.8266849	0.00
14525.00	90.00	266.74	6974.00	6551.71	-1526.12	-6374.64	40.4535168	-104.8270436	0.00
14625.00	90.00	266.74	6974.00	6650.62	-1531.81	-6474.48	40.4535011	-104.8274023	0.00
14725.00	90.00	266.74	6974.00	6749.54	-1537.49	-6574.32	40.4534854	-104.8277611	0.00
14825.00	90.00	266.74	6974.00	6848.45	-1543.17	-6674.15	40.4534698	-104.8281198	0.00
14925.00	90.00	266.74	6974.00	6947.36	-1548.85	-6773.99	40.4534541	-104.8284785	0.00
15025.00	90.00	266.74	6974.00	7046.28	-1554.54	-6873.83	40.4534384	-104.8288373	0.00
15125.00	90.00	266.74	6974.00	7145.19	-1560.22	-6973.67	40.4534228	-104.8291960	0.00
15225.00	90.00	266.74	6974.00	7244.10	-1565.90	-7073.51	40.4534071	-104.8295547	0.00
15325.00	90.00	266.74	6974.00	7343.02	-1571.58	-7173.35	40.4533914	-104.8299135	0.00
15425.00	90.00	266.74	6974.00	7441.93	-1577.26	-7273.18	40.4533757	-104.8302722	0.00
15525.00	90.00	266.74	6974.00	7540.84	-1582.95	-7373.02	40.4533600	-104.8306310	0.00
15625.00	90.00	266.74	6974.00	7639.76	-1588.63	-7472.86	40.4533444	-104.8309897	0.00
15725.00	90.00	266.74	6974.00	7738.67	-1594.31	-7572.70	40.4533287	-104.8313484	0.00
15825.00	90.00	266.74	6974.00	7837.58	-1599.99	-7672.54	40.4533130	-104.8317072	0.00
15888.79	90.00	266.74	6974.00	7900.68	-1603.62	-7736.23	40.4533030	-104.8319360	0.00



# Planned Wellpath Report

GOETZEL 13N-30C-M REV-A.0 PWP

Page 1 of 8



## REFERENCE WELLPATH IDENTIFICATION

Operator	SYNERGY RESOURCES CORPORATION	Slot	SLOT#20 GOETZEL 13N-30C-M (2177'FSL & 2053'FWL, SEC.29)
Area	COLORADO	Well	GOETZEL 13N-30C-M
Field	WELD COUNTY (NAD83,TRUE NORTH)	Wellbore	GOETZEL 13N-30C-M PWB
Facility	SEC.29-T06N-R66W		

## REPORT SETUP INFORMATION

Projection System	NAD83 / Lambert Colorado SP, Northern Zone (501), US feet	Software System	WellArchitect® 5.0
North Reference	True	User	Wagnjam
Scale	0.999963	Report Generated	2/27/2017 at 6:07:41 PM
Convergence at slot	0.45° East	Database/Source file	WA_DEN_Denver_Defn/GOETZEL_13N-30C-M_REV-A.0_PWP.xml

## WELLPATH LOCATION

	Local coordinates		Grid coordinates		Geographic coordinates	
	North[ft]	East[ft]	Easting[US ft]	Northing[US ft]	Latitude	Longitude
Slot Location	-1322.45	-822.33	3193637.80	1410343.17	40°27'27.749"N	104°48'14.897"W
Facility Reference Pt			3194449.65	1411672.01	40°27'40.817"N	104°48'04.259"W
Field Reference Pt			3171284.48	1426358.81	40°30'07.643"N	104°53'02.634"W

## WELLPATH DATUM

Calculation method	Minimum curvature	H&P 562 (25') (RKB) to Facility Vertical Datum	4757.00ft
Horizontal Reference Pt	Slot	H&P 562 (25') (RKB) to Mean Sea Level	4757.00ft
Vertical Reference Pt	H&P 562 (25') (RKB)	H&P 562 (25') (RKB) to Mud Line at Slot (SLOT#20 GOETZEL 13N-30C-M (2177'FSL & 2053'FWL, SEC.29))	4757.00ft
MD Reference Pt	H&P 562 (25') (RKB)	Section Origin	N 0.00, E 0.00 ft
Field Vertical Reference	Mean Sea Level	Section Azimuth	258.29°





# Planned Wellpath Report

GOETZEL 13N-30C-M REV-A.0 PWP

Page 2 of 8



## REFERENCE WELLPATH IDENTIFICATION

Operator	SYNERGY RESOURCES CORPORATION	Slot	SLOT#20 GOETZEL 13N-30C-M (2177'FSL & 2053'FWL, SEC.29)
Area	COLORADO	Well	GOETZEL 13N-30C-M
Field	WELD COUNTY (NAD83,TRUE NORTH)	Wellbore	GOETZEL 13N-30C-M PWB
Facility	SEC.29-T06N-R66W		

## WELLPATH DATA (165 stations) † = interpolated/extrapolated station

MD [ft]	Inclination [°]	Azimuth [°]	TVD [ft]	Vert Sect [ft]	North [ft]	East [ft]	DLS [°/100ft]	Comments
0.00†	0.000	127.460	0.00	0.00	0.00	0.00	0.00	
25.00	0.000	127.460	25.00	0.00	0.00	0.00	0.00	Tie On
125.00†	0.000	127.460	125.00	0.00	0.00	0.00	0.00	
225.00†	0.000	127.460	225.00	0.00	0.00	0.00	0.00	
325.00†	0.000	127.460	325.00	0.00	0.00	0.00	0.00	
425.00†	0.000	127.460	425.00	0.00	0.00	0.00	0.00	
525.00†	0.000	127.460	525.00	0.00	0.00	0.00	0.00	
625.00†	0.000	127.460	625.00	0.00	0.00	0.00	0.00	
725.00†	0.000	127.460	725.00	0.00	0.00	0.00	0.00	
825.00†	0.000	127.460	825.00	0.00	0.00	0.00	0.00	
850.00	0.000	127.460	850.00	0.00	0.00	0.00	0.00	End of Tangent
925.00†	1.500	127.460	924.99	-0.64	-0.60	0.78	2.00	
1025.00†	3.500	127.460	1024.89	-3.49	-3.25	4.24	2.00	
1125.00†	5.500	127.460	1124.58	-8.62	-8.02	10.47	2.00	
1225.00†	7.500	127.460	1223.93	-16.02	-14.91	19.45	2.00	
1325.00†	9.500	127.460	1322.83	-25.69	-23.90	31.19	2.00	
1425.00†	11.500	127.460	1421.15	-37.60	-34.98	45.65	2.00	
1525.00†	13.500	127.460	1518.77	-51.75	-48.14	62.83	2.00	
1625.00†	15.500	127.460	1615.58	-68.12	-63.37	82.71	2.00	
1719.36	17.387	127.460	1706.08	-85.58	-79.61	103.91	2.00	End of Build
1725.00†	17.387	127.460	1711.46	-86.69	-80.64	105.24	0.00	
1825.00†	17.387	127.460	1806.89	-106.22	-98.81	128.96	0.00	
1925.00†	17.387	127.460	1902.32	-125.76	-116.99	152.69	0.00	
2025.00†	17.387	127.460	1997.75	-145.30	-135.16	176.41	0.00	
2125.00†	17.387	127.460	2093.18	-164.84	-153.34	200.13	0.00	
2225.00†	17.387	127.460	2188.61	-184.37	-171.51	223.85	0.00	
2325.00†	17.387	127.460	2284.04	-203.91	-189.69	247.57	0.00	
2425.00†	17.387	127.460	2379.48	-223.45	-207.86	271.29	0.00	
2525.00†	17.387	127.460	2474.91	-242.99	-226.04	295.01	0.00	
2625.00†	17.387	127.460	2570.34	-262.53	-244.21	318.73	0.00	



# Planned Wellpath Report

GOETZEL 13N-30C-M REV-A.0 PWP

Page 3 of 8



## REFERENCE WELLPATH IDENTIFICATION

Operator	SYNERGY RESOURCES CORPORATION	Slot	SLOT#20 GOETZEL 13N-30C-M (2177'FSL & 2053'FWL, SEC.29)
Area	COLORADO	Well	GOETZEL 13N-30C-M
Field	WELD COUNTY (NAD83,TRUE NORTH)	Wellbore	GOETZEL 13N-30C-M PWB
Facility	SEC.29-T06N-R66W		

## WELLPATH DATA (165 stations) † = interpolated/extrapolated station

MD [ft]	Inclination [°]	Azimuth [°]	TVD [ft]	Vert Sect [ft]	North [ft]	East [ft]	DLS [°/100ft]	Comments
2725.00†	17.387	127.460	2665.77	-282.06	-262.39	342.45	0.00	
2825.00†	17.387	127.460	2761.20	-301.60	-280.56	366.17	0.00	
2925.00†	17.387	127.460	2856.63	-321.14	-298.74	389.89	0.00	
3025.00†	17.387	127.460	2952.06	-340.68	-316.91	413.61	0.00	
3125.00†	17.387	127.460	3047.49	-360.21	-335.08	437.33	0.00	
3225.00†	17.387	127.460	3142.92	-379.75	-353.26	461.05	0.00	
3325.00†	17.387	127.460	3238.35	-399.29	-371.43	484.77	0.00	
3425.00†	17.387	127.460	3333.78	-418.83	-389.61	508.49	0.00	
3525.00†	17.387	127.460	3429.21	-438.36	-407.78	532.21	0.00	
3625.00†	17.387	127.460	3524.64	-457.90	-425.96	555.93	0.00	
3725.00†	17.387	127.460	3620.07	-477.44	-444.13	579.65	0.00	
3825.00†	17.387	127.460	3715.51	-496.98	-462.31	603.37	0.00	
3925.00†	17.387	127.460	3810.94	-516.51	-480.48	627.09	0.00	
4025.00†	17.387	127.460	3906.37	-536.05	-498.66	650.81	0.00	
4125.00†	17.387	127.460	4001.80	-555.59	-516.83	674.53	0.00	
4225.00†	17.387	127.460	4097.23	-575.13	-535.01	698.25	0.00	
4325.00†	17.387	127.460	4192.66	-594.67	-553.18	721.97	0.00	
4425.00†	17.387	127.460	4288.09	-614.20	-571.36	745.69	0.00	
4525.00†	17.387	127.460	4383.52	-633.74	-589.53	769.41	0.00	
4625.00†	17.387	127.460	4478.95	-653.28	-607.71	793.14	0.00	
4725.00†	17.387	127.460	4574.38	-672.82	-625.88	816.86	0.00	
4825.00†	17.387	127.460	4669.81	-692.35	-644.05	840.58	0.00	
4925.00†	17.387	127.460	4765.24	-711.89	-662.23	864.30	0.00	
5025.00†	17.387	127.460	4860.67	-731.43	-680.40	888.02	0.00	
5125.00†	17.387	127.460	4956.11	-750.97	-698.58	911.74	0.00	
5225.00†	17.387	127.460	5051.54	-770.50	-716.75	935.46	0.00	
5325.00†	17.387	127.460	5146.97	-790.04	-734.93	959.18	0.00	
5425.00†	17.387	127.460	5242.40	-809.58	-753.10	982.90	0.00	
5525.00†	17.387	127.460	5337.83	-829.12	-771.28	1006.62	0.00	
5625.00†	17.387	127.460	5433.26	-848.66	-789.45	1030.34	0.00	



# Planned Wellpath Report

GOETZEL 13N-30C-M REV-A.0 PWP

Page 4 of 8



## REFERENCE WELLPATH IDENTIFICATION

Operator	SYNERGY RESOURCES CORPORATION	Slot	SLOT#20 GOETZEL 13N-30C-M (2177'FSL & 2053'FWL, SEC.29)
Area	COLORADO	Well	GOETZEL 13N-30C-M
Field	WELD COUNTY (NAD83,TRUE NORTH)	Wellbore	GOETZEL 13N-30C-M PWB
Facility	SEC.29-T06N-R66W		

## WELLPATH DATA (165 stations) † = interpolated/extrapolated station

MD [ft]	Inclination [°]	Azimuth [°]	TVD [ft]	Vert Sect [ft]	North [ft]	East [ft]	DLS [°/100ft]	Comments
5725.00†	17.387	127.460	5528.69	-868.19	-807.63	1054.06	0.00	
5825.00†	17.387	127.460	5624.12	-887.73	-825.80	1077.78	0.00	
5925.00†	17.387	127.460	5719.55	-907.27	-843.98	1101.50	0.00	
6025.00†	17.387	127.460	5814.98	-926.81	-862.15	1125.22	0.00	
6125.00†	17.387	127.460	5910.41	-946.34	-880.33	1148.94	0.00	
6225.00†	17.387	127.460	6005.84	-965.88	-898.50	1172.66	0.00	
6325.00†	17.387	127.460	6101.27	-985.42	-916.68	1196.38	0.00	
6337.66	17.387	127.460	6113.36	-987.89	-918.98	1199.39	0.00	End of Tangent
6425.00†	13.040	148.625	6197.68	-999.75	-935.35	1214.89	8.00	
6525.00†	11.697	186.135	6295.51	-1000.45	-955.09	1219.69	8.00	
6625.00†	15.162	217.822	6392.89	-987.37	-975.53	1210.57	8.00	
6725.00†	21.194	234.953	6487.92	-960.78	-996.27	1187.72	8.00	
6825.00†	28.190	244.340	6578.76	-921.19	-1016.92	1151.57	8.00	
6925.00†	35.585	250.155	6663.63	-869.38	-1037.05	1102.83	8.00	
7025.00†	43.172	254.167	6740.88	-806.36	-1056.30	1042.46	8.00	
7125.00†	50.865	257.175	6809.01	-733.34	-1074.27	971.61	8.00	
7225.00†	58.620	259.586	6866.70	-651.76	-1090.62	891.68	8.00	
7325.00†	66.414	261.626	6912.82	-563.19	-1105.03	804.22	8.00	
7425.00†	74.230	263.436	6946.47	-469.37	-1117.23	710.93	8.00	
7525.00†	82.061	265.110	6966.99	-372.12	-1126.96	613.63	8.00	
7625.00†	89.898	266.722	6974.00	-273.33	-1134.06	514.21	8.00	
7626.30	90.000	266.743	6974.00 <sup>1</sup>	-272.04	-1134.13	512.92	8.00	End of 3D Arc
7725.00†	90.000	266.743	6974.00	-174.41	-1139.74	414.37	0.00	
7825.00†	90.000	266.743	6974.00	-75.50	-1145.42	314.54	0.00	
7925.00†	90.000	266.743	6974.00	23.41	-1151.10	214.70	0.00	
8025.00†	90.000	266.743	6974.00	122.33	-1156.78	114.86	0.00	
8125.00†	90.000	266.743	6974.00	221.24	-1162.47	15.02	0.00	
8225.00†	90.000	266.743	6974.00	320.15	-1168.15	-84.82	0.00	
8325.00†	90.000	266.743	6974.00	419.07	-1173.83	-184.66	0.00	
8425.00†	90.000	266.743	6974.00	517.98	-1179.51	-284.49	0.00	



# Planned Wellpath Report

GOETZEL 13N-30C-M REV-A.0 PWP

Page 5 of 8



## REFERENCE WELLPATH IDENTIFICATION

Operator	SYNERGY RESOURCES CORPORATION	Slot	SLOT#20 GOETZEL 13N-30C-M (2177'FSL & 2053'FWL, SEC.29)
Area	COLORADO	Well	GOETZEL 13N-30C-M
Field	WELD COUNTY (NAD83,TRUE NORTH)	Wellbore	GOETZEL 13N-30C-M PWB
Facility	SEC.29-T06N-R66W		

## WELLPATH DATA (165 stations) † = interpolated/extrapolated station

MD [ft]	Inclination [°]	Azimuth [°]	TVD [ft]	Vert Sect [ft]	North [ft]	East [ft]	DLS [°/100ft]	Comments
8525.00†	90.000	266.743	6974.00	616.89	-1185.20	-384.33	0.00	
8625.00†	90.000	266.743	6974.00	715.81	-1190.88	-484.17	0.00	
8725.00†	90.000	266.743	6974.00	814.72	-1196.56	-584.01	0.00	
8825.00†	90.000	266.743	6974.00	913.63	-1202.24	-683.85	0.00	
8925.00†	90.000	266.743	6974.00	1012.55	-1207.92	-783.69	0.00	
9025.00†	90.000	266.743	6974.00	1111.46	-1213.61	-883.52	0.00	
9125.00†	90.000	266.743	6974.00	1210.38	-1219.29	-983.36	0.00	
9225.00†	90.000	266.743	6974.00	1309.29	-1224.97	-1083.20	0.00	
9325.00†	90.000	266.743	6974.00	1408.20	-1230.65	-1183.04	0.00	
9425.00†	90.000	266.743	6974.00	1507.12	-1236.33	-1282.88	0.00	
9525.00†	90.000	266.743	6974.00	1606.03	-1242.02	-1382.72	0.00	
9625.00†	90.000	266.743	6974.00	1704.94	-1247.70	-1482.56	0.00	
9725.00†	90.000	266.743	6974.00	1803.86	-1253.38	-1582.39	0.00	
9825.00†	90.000	266.743	6974.00	1902.77	-1259.06	-1682.23	0.00	
9925.00†	90.000	266.743	6974.00	2001.68	-1264.75	-1782.07	0.00	
10025.00†	90.000	266.743	6974.00	2100.60	-1270.43	-1881.91	0.00	
10125.00†	90.000	266.743	6974.00	2199.51	-1276.11	-1981.75	0.00	
10225.00†	90.000	266.743	6974.00	2298.42	-1281.79	-2081.59	0.00	
10325.00†	90.000	266.743	6974.00	2397.34	-1287.47	-2181.42	0.00	
10425.00†	90.000	266.743	6974.00	2496.25	-1293.16	-2281.26	0.00	
10525.00†	90.000	266.743	6974.00	2595.17	-1298.84	-2381.10	0.00	
10625.00†	90.000	266.743	6974.00	2694.08	-1304.52	-2480.94	0.00	
10725.00†	90.000	266.743	6974.00	2792.99	-1310.20	-2580.78	0.00	
10825.00†	90.000	266.743	6974.00	2891.91	-1315.88	-2680.62	0.00	
10925.00†	90.000	266.743	6974.00	2990.82	-1321.57	-2780.46	0.00	
11025.00†	90.000	266.743	6974.00	3089.73	-1327.25	-2880.29	0.00	
11125.00†	90.000	266.743	6974.00	3188.65	-1332.93	-2980.13	0.00	
11225.00†	90.000	266.743	6974.00	3287.56	-1338.61	-3079.97	0.00	
11325.00†	90.000	266.743	6974.00	3386.47	-1344.30	-3179.81	0.00	
11425.00†	90.000	266.743	6974.00	3485.39	-1349.98	-3279.65	0.00	



# Planned Wellpath Report

GOETZEL 13N-30C-M REV-A.0 PWP

Page 6 of 8



## REFERENCE WELLPATH IDENTIFICATION

Operator	SYNERGY RESOURCES CORPORATION	Slot	SLOT#20 GOETZEL 13N-30C-M (2177'FSL & 2053'FWL, SEC.29)
Area	COLORADO	Well	GOETZEL 13N-30C-M
Field	WELD COUNTY (NAD83,TRUE NORTH)	Wellbore	GOETZEL 13N-30C-M PWB
Facility	SEC.29-T06N-R66W		

## WELLPATH DATA (165 stations) † = interpolated/extrapolated station

MD [ft]	Inclination [°]	Azimuth [°]	TVD [ft]	Vert Sect [ft]	North [ft]	East [ft]	DLS [°/100ft]	Comments
11525.00†	90.000	266.743	6974.00	3584.30	-1355.66	-3379.49	0.00	
11625.00†	90.000	266.743	6974.00	3683.21	-1361.34	-3479.32	0.00	
11725.00†	90.000	266.743	6974.00	3782.13	-1367.02	-3579.16	0.00	
11825.00†	90.000	266.743	6974.00	3881.04	-1372.71	-3679.00	0.00	
11925.00†	90.000	266.743	6974.00	3979.96	-1378.39	-3778.84	0.00	
12025.00†	90.000	266.743	6974.00	4078.87	-1384.07	-3878.68	0.00	
12125.00†	90.000	266.743	6974.00	4177.78	-1389.75	-3978.52	0.00	
12225.00†	90.000	266.743	6974.00	4276.70	-1395.44	-4078.35	0.00	
12325.00†	90.000	266.743	6974.00	4375.61	-1401.12	-4178.19	0.00	
12425.00†	90.000	266.743	6974.00	4474.52	-1406.80	-4278.03	0.00	
12525.00†	90.000	266.743	6974.00	4573.44	-1412.48	-4377.87	0.00	
12625.00†	90.000	266.743	6974.00	4672.35	-1418.16	-4477.71	0.00	
12725.00†	90.000	266.743	6974.00	4771.26	-1423.85	-4577.55	0.00	
12825.00†	90.000	266.743	6974.00	4870.18	-1429.53	-4677.39	0.00	
12925.00†	90.000	266.743	6974.00	4969.09	-1435.21	-4777.22	0.00	
13025.00†	90.000	266.743	6974.00	5068.00	-1440.89	-4877.06	0.00	
13125.00†	90.000	266.743	6974.00	5166.92	-1446.57	-4976.90	0.00	
13225.00†	90.000	266.743	6974.00	5265.83	-1452.26	-5076.74	0.00	
13325.00†	90.000	266.743	6974.00	5364.75	-1457.94	-5176.58	0.00	
13425.00†	90.000	266.743	6974.00	5463.66	-1463.62	-5276.42	0.00	
13525.00†	90.000	266.743	6974.00	5562.57	-1469.30	-5376.25	0.00	
13625.00†	90.000	266.743	6974.00	5661.49	-1474.99	-5476.09	0.00	
13725.00†	90.000	266.743	6974.00	5760.40	-1480.67	-5575.93	0.00	
13825.00†	90.000	266.743	6974.00	5859.31	-1486.35	-5675.77	0.00	
13925.00†	90.000	266.743	6974.00	5958.23	-1492.03	-5775.61	0.00	
14025.00†	90.000	266.743	6974.00	6057.14	-1497.71	-5875.45	0.00	
14125.00†	90.000	266.743	6974.00	6156.05	-1503.40	-5975.29	0.00	
14225.00†	90.000	266.743	6974.00	6254.97	-1509.08	-6075.12	0.00	
14325.00†	90.000	266.743	6974.00	6353.88	-1514.76	-6174.96	0.00	
14425.00†	90.000	266.743	6974.00	6452.79	-1520.44	-6274.80	0.00	



# Planned Wellpath Report

GOETZEL 13N-30C-M REV-A.0 PWP

Page 7 of 8



## REFERENCE WELLPATH IDENTIFICATION

Operator	SYNERGY RESOURCES CORPORATION	Slot	SLOT#20 GOETZEL 13N-30C-M (2177'FSL & 2053'FWL, SEC.29)
Area	COLORADO	Well	GOETZEL 13N-30C-M
Field	WELD COUNTY (NAD83,TRUE NORTH)	Wellbore	GOETZEL 13N-30C-M PWB
Facility	SEC.29-T06N-R66W		

## WELLPATH DATA (165 stations) † = interpolated/extrapolated station

MD [ft]	Inclination [°]	Azimuth [°]	TVD [ft]	Vert Sect [ft]	North [ft]	East [ft]	DLS [°/100ft]	Comments
14525.00†	90.000	266.743	6974.00	6551.71	-1526.12	-6374.64	0.00	
14625.00†	90.000	266.743	6974.00	6650.62	-1531.81	-6474.48	0.00	
14725.00†	90.000	266.743	6974.00	6749.54	-1537.49	-6574.32	0.00	
14825.00†	90.000	266.743	6974.00	6848.45	-1543.17	-6674.15	0.00	
14925.00†	90.000	266.743	6974.00	6947.36	-1548.85	-6773.99	0.00	
15025.00†	90.000	266.743	6974.00	7046.28	-1554.54	-6873.83	0.00	
15125.00†	90.000	266.743	6974.00	7145.19	-1560.22	-6973.67	0.00	
15225.00†	90.000	266.743	6974.00	7244.10	-1565.90	-7073.51	0.00	
15325.00†	90.000	266.743	6974.00	7343.02	-1571.58	-7173.35	0.00	
15425.00†	90.000	266.743	6974.00	7441.93	-1577.26	-7273.18	0.00	
15525.00†	90.000	266.743	6974.00	7540.84	-1582.95	-7373.02	0.00	
15625.00†	90.000	266.743	6974.00	7639.76	-1588.63	-7472.86	0.00	
15725.00†	90.000	266.743	6974.00	7738.67	-1594.31	-7572.70	0.00	
15825.00†	90.000	266.743	6974.00	7837.58	-1599.99	-7672.54	0.00	
15888.79	90.000	266.743	6974.00 <sup>2</sup>	7900.68	-1603.62	-7736.23	0.00	End of Tangent

## HOLE & CASING SECTIONS - Ref Wellbore: GOETZEL 13N-30C-M PWB Ref Wellpath: GOETZEL 13N-30C-M REV-A.0 PWP

String/Diameter	Start MD [ft]	End MD [ft]	Interval [ft]	Start TVD [ft]	End TVD [ft]	Start N/S [ft]	Start E/W [ft]	End N/S [ft]	End E/W [ft]
13.5in Open Hole	25.00	1700.00	1675.00	25.00	1687.58	0.00	0.00	-76.13	99.36
8.5in Open Hole	1700.00	15888.00	14188.00	1687.58	6974.00	-76.13	99.36	-1603.57	-7735.44





# Planned Wellpath Report

GOETZEL 13N-30C-M REV-A.0 PWP

Page 8 of 8



## REFERENCE WELLPATH IDENTIFICATION

Operator	SYNERGY RESOURCES CORPORATION	Slot	SLOT#20 GOETZEL 13N-30C-M (2177'FSL & 2053'FWL, SEC.29)
Area	COLORADO	Well	GOETZEL 13N-30C-M
Field	WELD COUNTY (NAD83,TRUE NORTH)	Wellbore	GOETZEL 13N-30C-M PWB
Facility	SEC.29-T06N-R66W		

## TARGETS

Name	MD [ft]	TVD [ft]	North [ft]	East [ft]	Grid East [US ft]	Grid North [US ft]	Latitude	Longitude	Shape
SEC.29-T06N-R66W NORTHERN		9.00	1322.46	822.30	3194449.66	1411671.99	40°27'40.817"N	104°48'04.259"W	polygon
SEC.29-T06N-R66W SOUTHERN		9.00	1322.46	822.30	3194449.66	1411671.99	40°27'40.817"N	104°48'04.259"W	polygon
SEC.30-T06N-R66W NORTHERN		9.00	1322.46	822.30	3194449.66	1411671.99	40°27'40.817"N	104°48'04.259"W	polygon
SEC.30-T06N-R66W SOUTHERN		9.00	1322.46	822.30	3194449.66	1411671.99	40°27'40.817"N	104°48'04.259"W	polygon
GOETZEL 13N-30C-M BHL ON PLAT (937'FSL & 751'FWL SEC.30)		6974.00	-1570.65	-7135.36	3186515.25	1408716.64	40°27'12.218"N	104°49'47.197"W	circle
2) GOETZEL 13N-30C-M BHL REV-1 (937'FSL & 150'FWL SEC.30)	15888.79	6974.00	-1603.62	-7736.23	3185914.69	1408678.95	40°27'11.891"N	104°49'54.970"W	point
1) GOETZEL 13N-30C-M TOP OF PROD REV-1 (1030'FSL & 2571'FWL SEC.29)	7626.30	6974.00	-1134.13	512.92	3194159.58	1409213.14	40°27'16.542"N	104°48'08.262"W	circle

## SURVEY PROGRAM - Ref Wellbore: GOETZEL 13N-30C-M PWB Ref Wellpath: GOETZEL 13N-30C-M REV-A.0 PWP

Start MD [ft]	End MD [ft]	Positional Uncertainty Model	Log Name/Comment	Wellbore
25.00	1700.00	Custom BHI NaviTrak (Standard Rotating+Axial Corr) (Rockies 0.03Gt model)		GOETZEL 13N-30C-M PWB
1700.00	15888.79	Custom BHI AutoTrak Curve (IFR1, Short) (Rockies 0.03Gt model)		GOETZEL 13N-30C-M PWB