

# HALLIBURTON

iCem<sup>®</sup> Service

## **URSA RESOURCE GROUP II LLC**

**For: RICHARD MCNEILL**

Date: Monday, November 23, 2015

## **MONUMENT RIDGE B 43C-08-07-95**

API/UWI #: **05-045-22914-00**

MONUMENT RIDGE 43C-08-07-95

902930527

Job Date: Sunday, November 22, 2015

Sincerely,

**Grand Junction Cement Engineers**

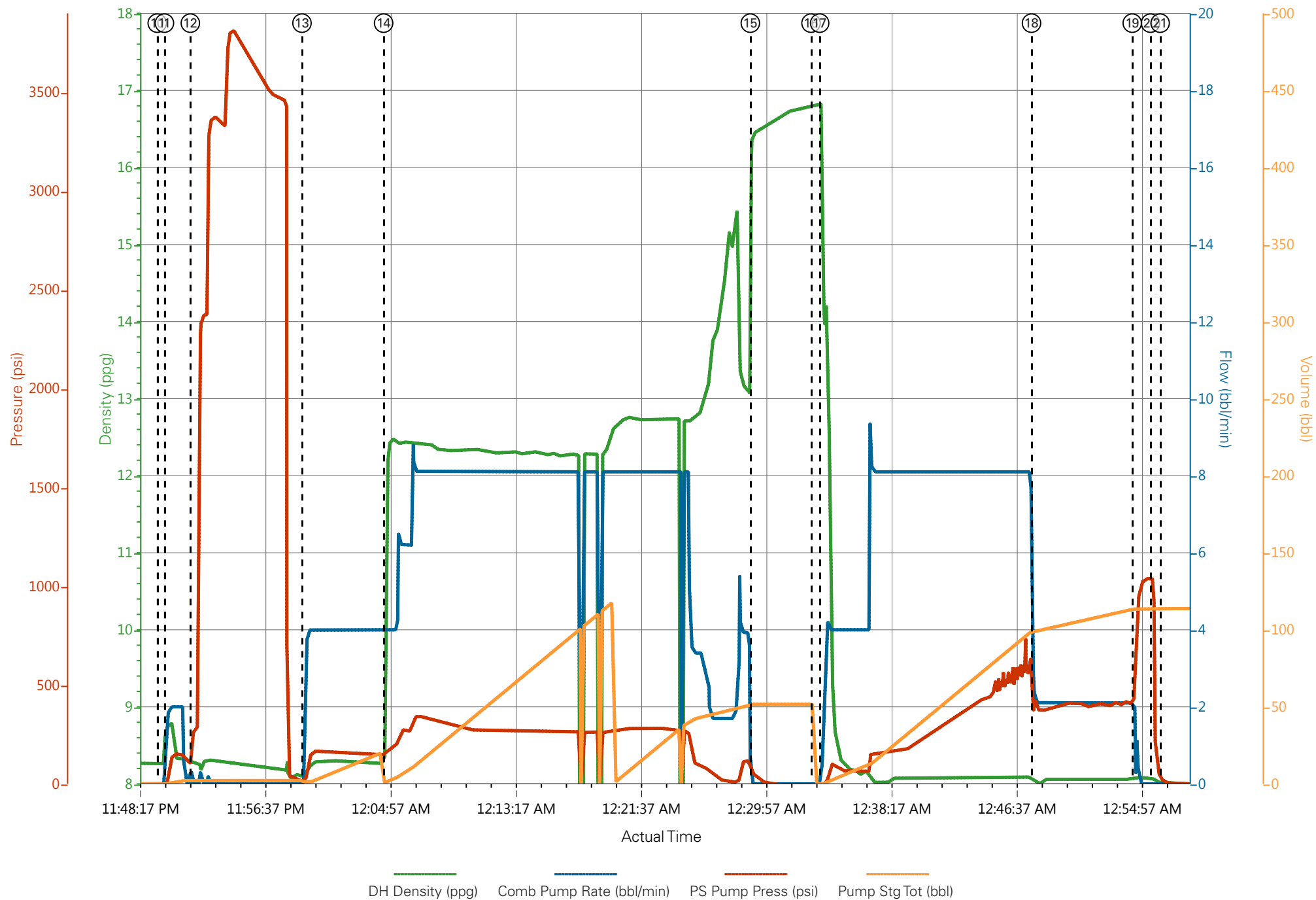
## 2.0 Real-Time Job Summary

## 2.1 Job Event Log

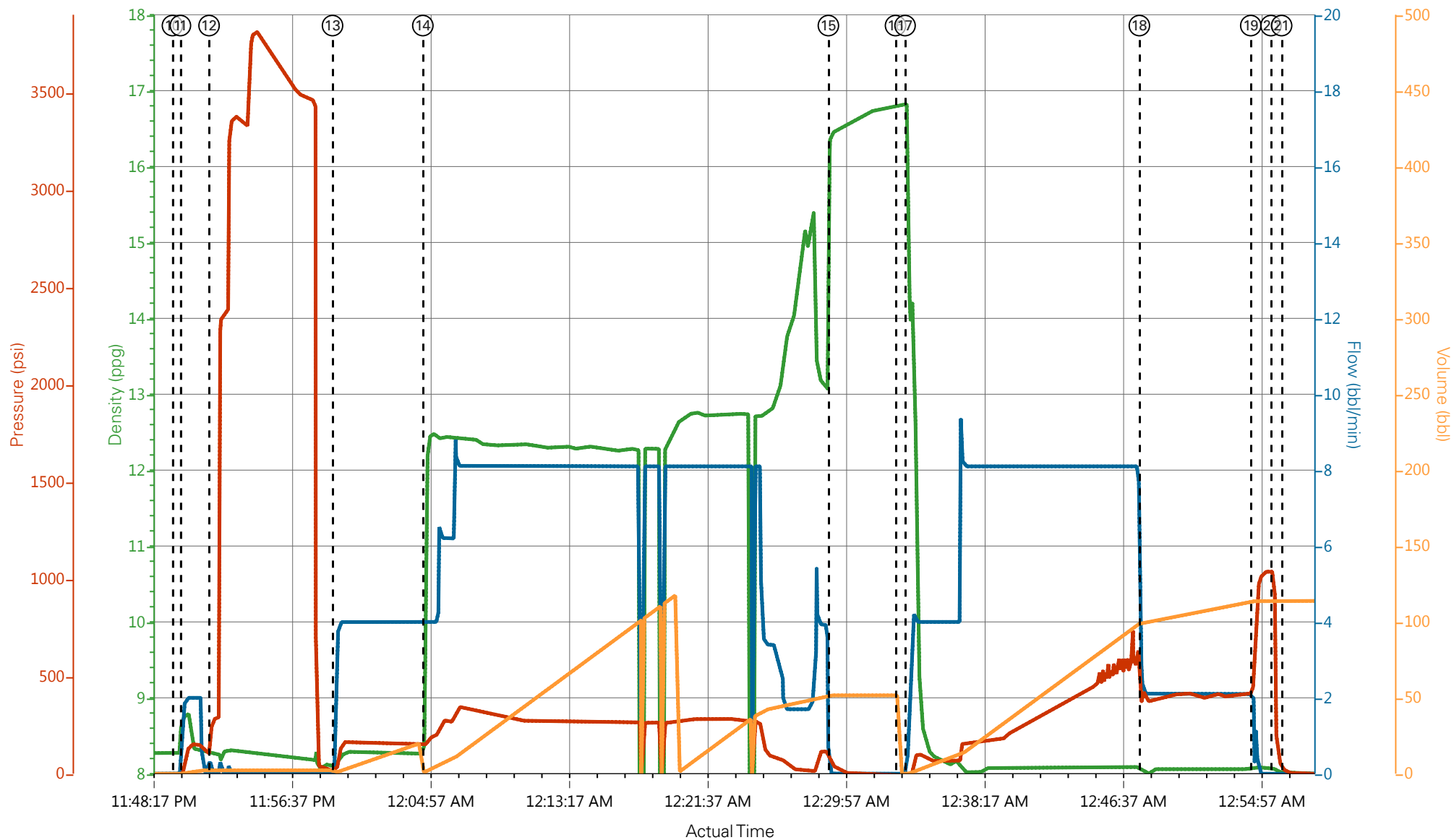
Type	Seq. No.	Activity	Date	Time	Source	DH Density (ppg)	Comb Pump Rate (bbl/min)	PS Pump Press (psi)	Pump Stg Tot (bbl)	Comments
Event	1	Call Out	11/22/2015	13:00	USER					
Event	2	Depart Yard Safety Meeting	11/22/2015	15:20	USER					ATTENDED BY ALL HES CREW
Event	3	Crew Leave Yard	11/22/2015	15:30	USER					
Event	4	Arrive At Loc	11/22/2015	17:00	USER					RIG RUNNING CASING, COMPANY REP OFFERED MSDS FOR CEMENT AND ADDITIVES
Event	5	Assessment Of Location Safety Meeting	11/22/2015	22:00	USER					ATTENDED BY ALL HES CREW
Event	6	Other	11/22/2015	22:10	USER					SPOT EQUIPMENT
Event	7	Pre-Rig Up Safety Meeting	11/22/2015	22:20	USER					ATTENDED BY ALL HES CREW
Event	8	Rig-Up Equipment	11/22/2015	22:30	USER					
Event	9	Pre-Job Safety Meeting	11/22/2015	23:30	USER					ATTENDED BY ALL HES CREW, RIG CREW AND COMPANY REP
Event	10	Other	11/22/2015	23:49:36	USER					TP 1768', TD 1788', MW 9.5 PPG, CASING 8.625", 32#, J-55, SJ , HOLE 12.25", CONDUCTOR CASING 16", 75# SET AT 60', RIG CIRCULATED FOR 1 HR PRIOR TO JOB
Event	11	Other	11/22/2015	23:50:05	USER	8.34	2	150	2	FRESH WATER, PH 7, CHLORIDES 0, TEMP 78 DEG.

Event	12	Test Lines	11/22/2015	23:51:48	USER					PRESSURED UP TO 3800 PSI, PRESSURE HELD
Event	13	Pump Spacer	11/22/2015	23:59:14	USER	8.34	4	165	20	FRESH WATER
Event	14	Pump Lead Cement	11/23/2015	00:04:40	USER	12.3	8	350	112.2	256 SKS VARICEM MIXED AT 12.3 PPG, 2.46 YIELD, 14.17 GL/SK
Event	15	Pump Tail Cement	11/23/2015	00:29:04	USER	12.8	8	290	46.6	120 SKS VARICEM MIXED AT 12.8 PPG, 2.18 YIELD, 12.11 GL/SK
Event	16	Shutdown	11/23/2015	00:33:07	USER					CEMENT DENSITY VERIFIED WITH CALLIBRATED SCALES, SPIKE IN DENSITY WAS DUE TO SLOW RATE
Event	17	Drop Top Plug	11/23/2015	00:33:41	USER					PLUG LAUNCHED
Event	18	Pump Displacement	11/23/2015	00:47:47	USER	8.34	8	630	94.9	FRESH WATER
Event	19	Check Floats	11/23/2015	00:54:29	USER	8.34	2	420	10	FLOATS HELD
Event	20	Bump Plug	11/23/2015	00:55:42	USER			1100		PLUG LANDED
Event	21	Other	11/23/2015	00:56:20	USER					GOOD CIRCULATION THROUGHOUT JOB, 15 BBLS CEMENT TO SURFACE, PIPE NOT MOVED DURING JOB
Event	22	Post-Job Safety Meeting (Pre Rig-Down)	11/23/2015	01:00	USER					ATTENDED BY ALL HES CREW
Event	23	Rig-Down Equipment	11/23/2015	01:10	USER					
Event	24	Depart Location Safety Meeting	11/23/2015	01:50	USER					ATTENDED BY ALL HES CREW
Event	25	Crew Leave Location	11/23/2015	02:00	USER					THANK YOU FOR USING HALLIBURTON CEMENT, ERIC CARTER AND CREW.

# URSA - MONUMENT RIDGE 43C-08-07-95 - SURFACE



# URSA - MONUMENT RIDGE 43C-08-07-95 - SURFACE



— DH Density (ppg)   
 — Comb Pump Rate (bbl/min)   
 — PS Pump Press (psi)   
 — Pump Stg Tot (bbl)

① Call Out n/a;n/a;n/a;n/a	⑥ Other n/a;n/a;n/a;n/a	⑪ Fill Lines 8.74;1.6;6;0.1	⑮ Shutdown 16.81;0;-10;0	⑲ End Job 8.02;0;1
② Depart Yard Safety Meeting n/a;n/a;n/a;n/a	⑦ Pre-Rig Up Safety Meeting n/a;n/a;n/a;n/a	⑫ Test Lines 8.28;0;268;2.2	⑯ Drop Top Plug 16.27;1.7;-8;0.1	⑳ Post-Job Safety
③ Crew Leave Yard n/a;n/a;n/a;n/a	⑧ Rig-Up Equipment n/a;n/a;n/a;n/a	⑬ Pump Spacer 8.09;1.7;17;2.3	⑰ Pump Displacement 8.04;2.2;429;99.7	㉑ Rig-Down Equip
④ Arrive At Loc n/a;n/a;n/a;n/a	⑨ Pre-Job Safety Meeting n/a;n/a;n/a;n/a	⑭ Pump Lead Cement 11.42;4;152;1.4	⑱ Check Floats 8.07;1.9;603;113.7	㉒ Depart Location
⑤ Assessment Of Location Safety Meeting n/a;n/a;n/a;n/a	⑩ Start Job 8.26;0;-7;0	⑮ Pump Tail Cement 16.45;0;51;51.6	㉒ Bump Plug 8.07;0;1022;113.9	㉓ Crew Leave Loc