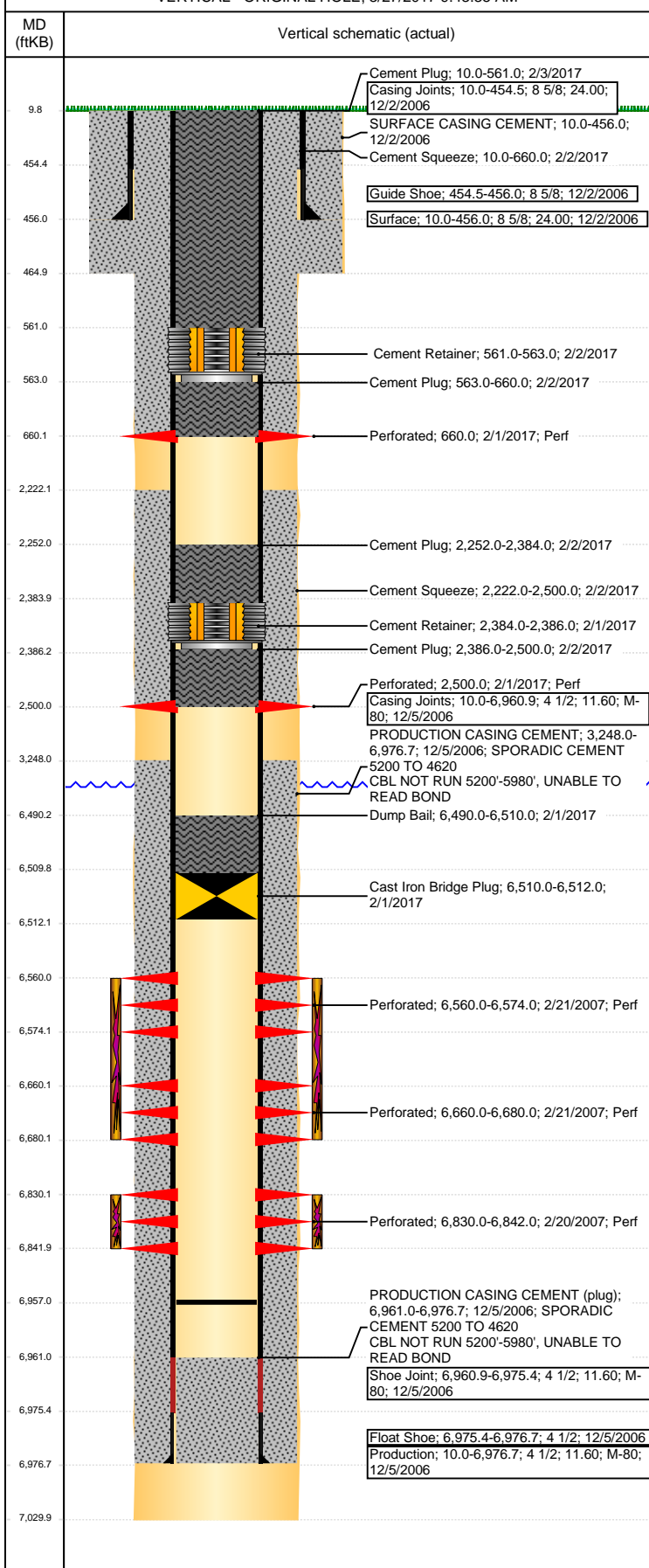


Well Name: FOSS 14-42

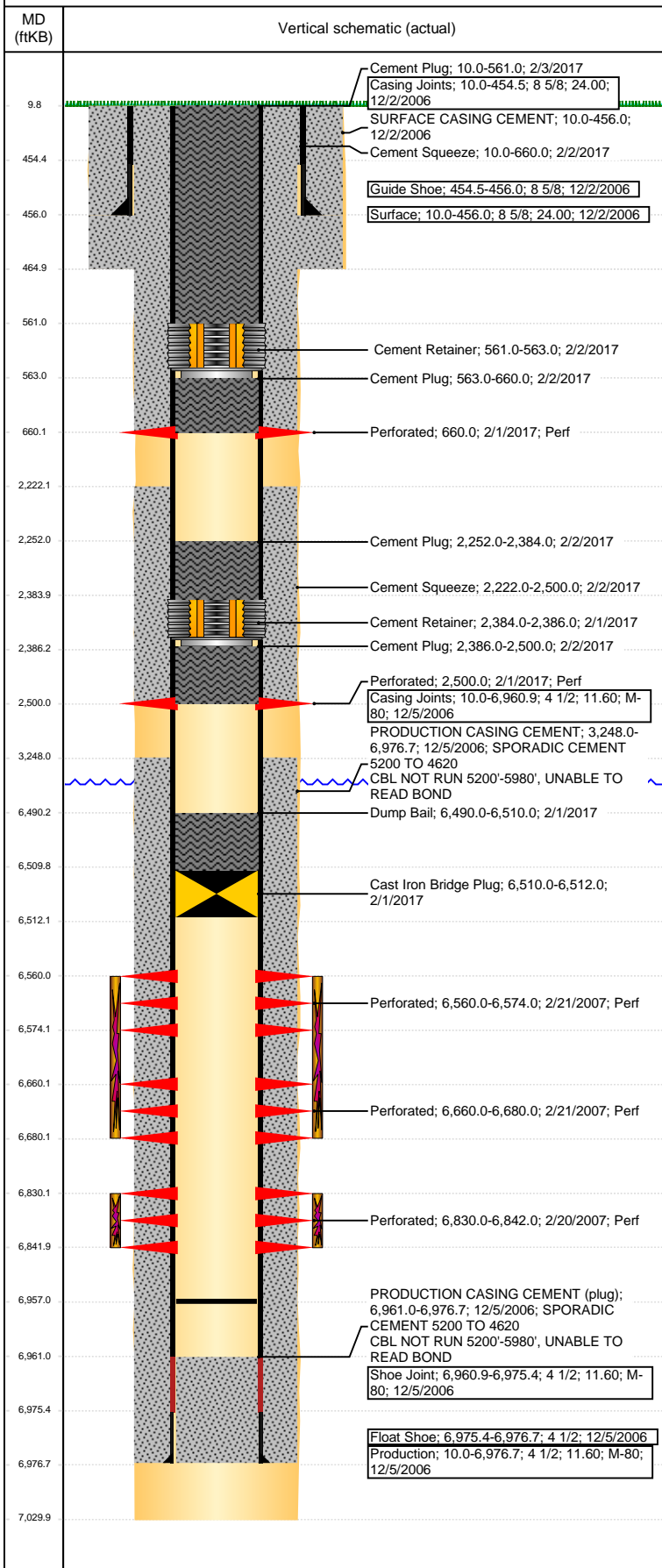
VERTICAL - ORIGINAL HOLE. 3/27/2017 9:43:35 AM



Well Header							
API 05-123-24300		Business Unit DJ BASIN		District 15		Well Config VERTICAL	
Original KB Elevation (ft) 4,707		KB - GL / MSL (ftKB) 10.00		Spud Date 12/1/2006		P & A Date 2/3/2017	
Comment							
Directions To Well 392 & 59, W 1/2, N ON ES OF FENCE LINE 4/10, NE ON EDGE OF FIELD 1/10 INTO							
Congressional Location							
Quarter 3 NW		Quarter 4 SE	Section 14	Township 6	Twnshp N/S Dir N	Range 64	
						Range E/W Dir W	
Bottom Hole Location							
North-South Distance (ft)			From N or S Line		East-West Distance (ft)		From E or W Line
Plug Back Total Depths							
Date		Depth (ftKB)	Method		Com		
12/5/2006		6,961.0	CASING TALLY		GUIDE SHOE W/SHOE JOINT		
2/19/2007		6,954.0	CASED HOLE LOG		DEPTH LOGGER ON CBL		
10/24/2007		6,957.0	TAG		CLEAN OUT TO LAND TUBING		
Wellbore Sections							
Section Des			Size (in)		Act Top, MD (ftKB)		Act Btm, MD (ftKB)
SURFACE			12 1/4		10		465
PRODUCTION			7 7/8		465		7,030
Zone Statuses							
Zone Name		Status Date	Status	Fluid Type	Job	Prod Method	
NIOBRARA		4/3/2007	PR	Water	DRILLING/CO...	Flowing	
NIOBRARA		5/28/2011	PR				
NIOBRARA		2/1/2017	P&A		PLUG AND AB...		
CODELL		4/3/2007	PR	Water	DRILLING/CO...	Flowing	
CODELL		5/28/2011	PR				
CODELL		2/1/2017	P&A		PLUG AND AB...		
Casing Strings							
Surface, 456.0ftKB							
Casing Description Surface		Run Date 12/2/2006	OD (in) 8 5/8	Wt/Len (l...) 24.00	Grade	Top, MD (ft...) 10.0	MD (ftKB) 456.0
Production, 6,976.7ftKB							
Casing Description Production		Run Date 12/5/2006	OD (in) 4 1/2	Wt/Len (l...) 11.60	Grade M-80	Top, MD (ft...) 10.0	MD (ftKB) 6,976.7
Cement							
Description SURFACE CASING CEMENT					Top Depth (ftKB) 10.0		Bottom Depth (ftKB) 456.0
Description PRODUCTION CASING CEMENT					Top Depth (ftKB) 3,248.0		Bottom Depth (ftKB) 6,976.7
Description Dump Bail					Top Depth (ftKB) 6,490.0		Bottom Depth (ftKB) 6,510.0
Description Cement Plug					Top Depth (ftKB) 2,252.0		Bottom Depth (ftKB) 2,384.0
Description Cement Squeeze					Top Depth (ftKB) 2,222.0		Bottom Depth (ftKB) 2,500.0
Description Cement Plug					Top Depth (ftKB) 2,386.0		Bottom Depth (ftKB) 2,500.0
Description Cement Squeeze					Top Depth (ftKB) 10.0		Bottom Depth (ftKB) 660.0
Description Cement Plug					Top Depth (ftKB) 563.0		Bottom Depth (ftKB) 660.0
Description Cement Plug					Top Depth (ftKB) 10.0		Bottom Depth (ftKB) 561.0
Tubing Strings							
Tubing Description Tubing		Run Date 10/24/2007	String... 2 3/8	ID (in)	Wt (lb/ft)	Grade	Len (ft) 6,793.00
							Set De...
Other In Hole							
Run Date		Des			OD (in)	Top (ftKB)	Btm (ftKB)
2/1/2017		Cast Iron Bridge Plug			3.99	6,510.0	6,512.0
2/1/2017		Cement Retainer			3.99	2,384.0	2,386.0
2/2/2017		Cement Retainer			3.99	561.0	563.0
Logs							
Date		Type			Top, MD (ftKB)		Btm, MD (ftKB)
12/5/2006		COMPENSATED DENSITY			3,450.0		7,001.0

Well Name: FOSS 14-42

VERTICAL - ORIGINAL HOLE, 3/27/2017 9:43:38 AM



Logs			
Date	Type	Top, MD (ftKB)	Btm, MD (ftKB)
12/5/2006	INDUCTION	456.0	7,021.0
2/19/2007	CBL/CCL/GR	3,150.0	6,952.0
4/15/2015	GYRO	10.0	6,700.0
2/3/2017	RADIAL CEMENT	10.0	561.0

Perforation Data					
Linked Zone	Bnch/St g	Sum of Entered Shot Total	Top (ftKB)	Btm (ftKB)	Date
NIOBRARA, ORIGINAL HOLE	01	4	660.00	660.00	2/1/2017
	01	4	2,500.00	2,500.00	2/1/2017
	A	28	6,560.00	6,574.00	2/21/2007
	B	80	6,660.00	6,680.00	2/21/2007
CODELL, ORIGINAL HOLE		48	6,830.00	6,842.00	2/20/2007
Total (Sum)		164			

Stimulation Intervals		
Start Date	Primary Job Type	
2/21/2007	DRILLING/COMPLETION - ORIGINAL	
Technical Result	Tech Result Details	Tech Result Note
Comment		
Start Date	Primary Job Type	
2/21/2007	DRILLING/COMPLETION - ORIGINAL	
Technical Result	Tech Result Details	Tech Result Note
Comment		