

LEGEND:

 **PROPOSED LOCATION**



BILL BARRETT CORPORATION

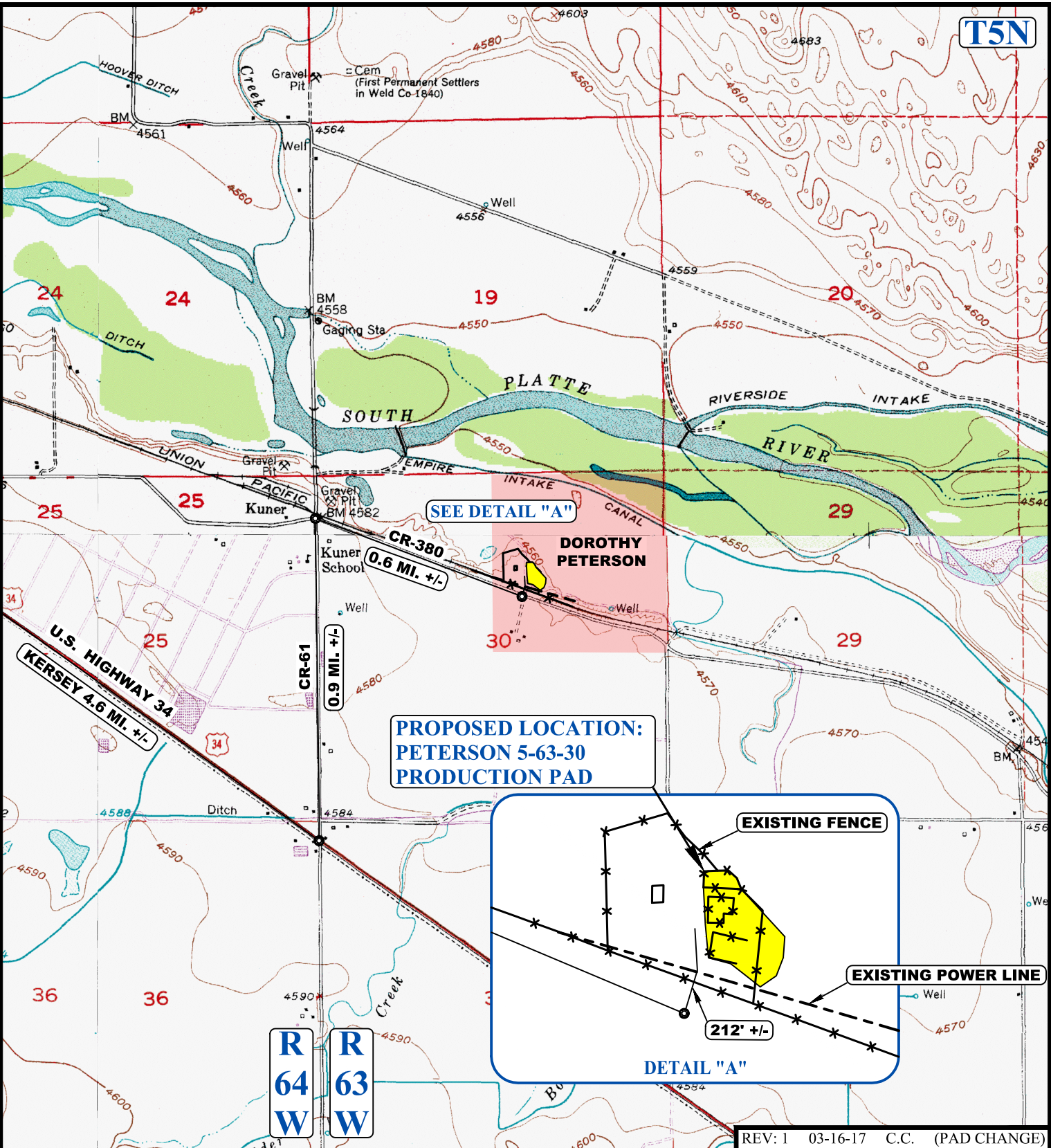
PETERSON 5-63-30 PRODUCTION PAD
 SW 1/4 NE 1/4, SECTION 30, T5N, R63W, 6th P.M.
 WELD COUNTY, COLORADO



UELS, LLC
 Corporate Office * 85 South 200 East
 Vernal, UT 84078 * (435) 789-1017

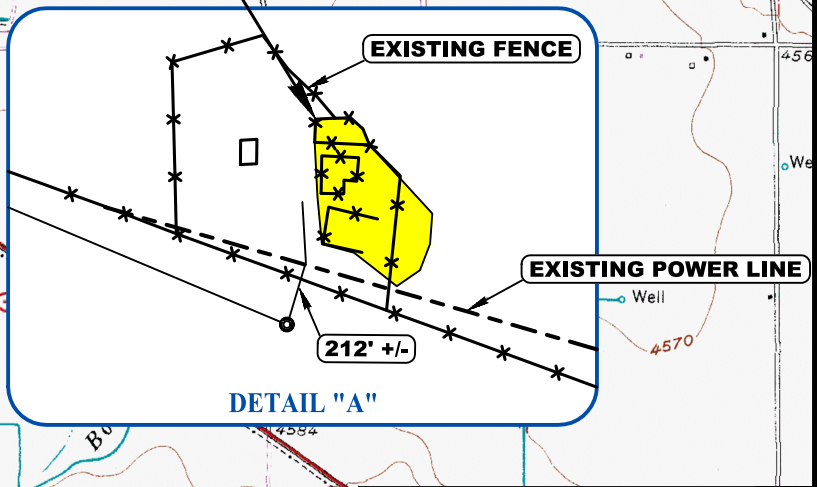
SURVEYED BY	C.M., D.N.	01-17-17	SCALE
DRAWN BY	B.R.	02-27-17	1 : 100,000
ACCESS ROAD MAP			TOPO A

T5N



SEE DETAIL "A"

PROPOSED LOCATION:
PETERSON 5-63-30
PRODUCTION PAD



REV: 1 03-16-17 C.C. (PAD CHANGE)

NOTE: PARCEL DATA SHOWN HAS BEEN OBTAINED FROM VARIOUS SOURCES AND SHOULD BE USED FOR MAPPING, GRAPHIC AND PLANNING PURPOSES ONLY. NO WARRANTY IS MADE BY UINTAH ENGINEERING AND LAND SURVEYING (UELS) FOR ACCURACY OF THE PARCEL DATA.

- LEGEND:**
- EXISTING ROAD
 - * - EXISTING FENCE
 - - - EXISTING POWER LINE



BILL BARRETT CORPORATION

PETERSON 5-63-30 PRODUCTION PAD
SW 1/4 NE 1/4, SECTION 30, T5N, R63W, 6th P.M.
WELD COUNTY, COLORADO

SURVEYED BY	C.M., D.N.	01-17-17	SCALE
DRAWN BY	B.R.	02-27-17	1 : 24,000
ACCESS ROAD MAP			TOPO B



UELS, LLC
Corporate Office * 85 South 200 East
Vernal, UT 84078 * (435) 789-1017