



SRC ENERGY

Operator: SRC Energy
Well Name: Goldberg 1-24
Legal: NENE, Section 24, Township 5N, Range 67W
Location: Weld County, CO
API: 05-123-13117

Deepest Water Well Within 1
Mile = 460'





Wellbore History

Spud Date: 08/12/1986
Surf Csg: 8.625", 24# @ 329' – 225sx
Prod Csg: 4.5", 15.1# @ 7604' - 230 sx
TOC: 6528' (CBL)
Perfs: NIOBRARA: 7168'-7387'
CODELL: 7472'-7486'

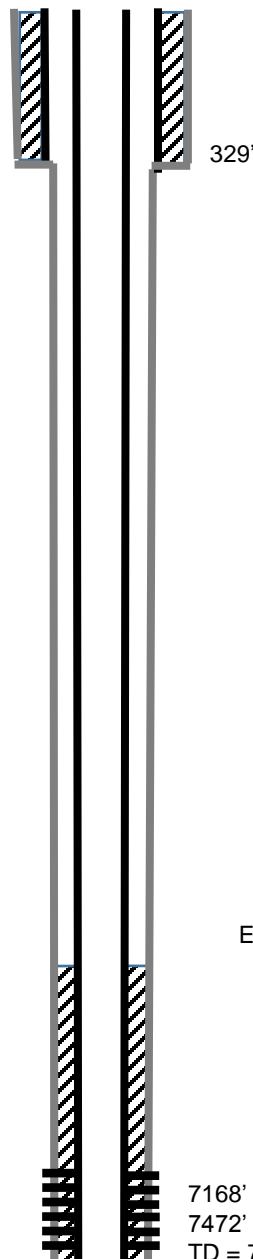
P&A Procedure

Set retainer@ 7093' and squeeze perfs
Set 5 sx on top of retainer (50' plug)
Perf & circ 30 sx on backside
Pump 10 sx @ 3850' – 3950' (100' plug)
Cut Casing @ 339'
Pmp 155 sx @ 389' to surface

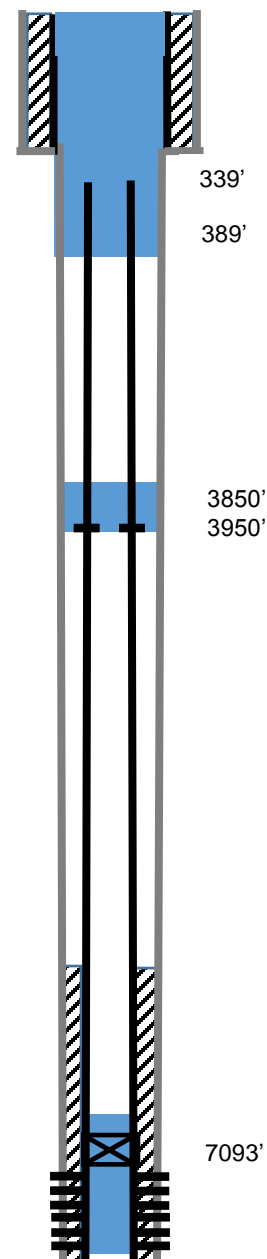
Key

-  Existing Cement Coverage
-  Retainer
-  Cement Pumped
-  CIBP

Current



Proposed



Estimated
TOC
6528'

7168' - 7387'
7472' - 7486'
TD = 7605'