

T7S, R96W, 6th P.M.

32

T6S
T7S

S 1/4 Cor. Sec. 31
W.C. 1912 Brass
Cap, 0.7' High
Lat: 39.473161°
Long: 108.150919°

W 1/4 Cor. Sec. 32
Alum Cap, #17485,
1.5' High, Pile of Stones
Lat: 39.480372°
Long: 108.141708°

Section Corner
Re-Established by
Single Proportion
Method (Not Set)
Lat: 39.473161°
Long: 108.141914°

1912 Brass Cap
0.9' High
Lat: 39.473206°
Long: 108.132189°

1912 Brass Cap
1.4' High, Pile of
Stones, Steel Rod
Lat: 39.473253°
Long: 108.122347°

True Position
Lat: 39.473161°
Long: 108.149983°

S89°41'08"W - 2745.94' (Meas.)

S89°39'31"W - 2779.74' (Meas.)

N89°58'52"W
2278.57' (Meas.)

LEGEND:

- 90° SYMBOL
- PROPOSED WELLHEAD.
- TARGET BOTTOM HOLE.
- SECTION CORNERS LOCATED.
- SECTION CORNERS RE-ESTABLISHED. (Not Set on Ground.)

1920 Brass Cap
1.0' High
Lat: 39.466308°
Long: 108.140608°

LOT 4
NOTE:
SEE CURRENT FOOTAGE PLAT #6 FOR
EXISTING IMPROVEMENT WITHIN 500'
OF THE PROPOSED WELL HEAD.

LOT 3

LOT 2

LOT 1

LINE TABLE		
LINE	DIRECTION	LENGTH
L1	N89°58'52"W	264.66'
L2	N00°02'55"E	129.07'

NOTE:
THE PROPOSED TARGET BOTTOM HOLE FOR
THIS WELL IS LOCATED IN LOT 6 OF SECTION 4,
T7S, R96W, 6th P.M. AT 2042' FSL 1995' FWL.
IT BEARS N67°10'06"E 3174.92' FROM THE
PROPOSED WELLHEAD.

LOT 5
1920 Brass Cap
1.5' High, Pile of
Stones
Lat: 39.466536°
Long: 108.122344°

N00°05'33"E
214.18' (Meas.)
2012 Alum. Cap,
1.0' High
Lat: 39.465949°
Long: 108.122346°

LOT 6

Target
Bottom
Hole

GM 323-4

Elev. Graded Ground = 5977.1'

LOT 7

N67°10'06"E
3174.92'
931'

C.C.
1920 Brass Cap,
0.6' High, Pile
of Stones
Lat: 39.459024°
Long: 108.122346°

1920 Brass Cap,
0.8' High, Pile
of Stones
Lat: 39.458669°
Long: 108.122347°

N 1/4 Cor. Sec. 7
1920 Brass Cap,
1.1' High
Lat: 39.459036°
Long: 108.149894°

N89°57'17"W
2642.78' (Meas.)

N00°01'E - 2488.86' (G.L.O.)

N00°24'47"W - 2650.27' (Meas.)

500°21'19"W
2650.20' (Meas.)

Section Corner
Re-Established by Double
Proportion Method
Lat: 39.459033°
Long: 108.140536°

1920 Brass Cap
1.5' High
Lat: 39.459042°
Long: 108.131169°

S89°57'05"W - 2645.43' (Meas.)

N89°50'05"W 2492.37' (Meas. to True)

N89°50'05"W 2492.44' (Meas. to C.C.)

W 1/4 Cor. Sec. 8
1920 Brass Cap,
0.5' High
Lat: 39.451761°
Long: 108.140592°

PDOP = 1.3

NAD 83 (SURFACE LOCATION)

LATITUDE = 39°27'39.33" (39.460925)
LONGITUDE = 108°07'32.32" (108.125644)
STATE PLANE NAD 83 COLO. CENT.
N: 1603483.04 E: 2258776.22



PLAT #1

CERTIFICATE
THIS IS TO CERTIFY THAT THE ABOVE PLAT WAS PREPARED AND
LOCATION AS SHOWN WAS STAKED ON THE GROUND FROM FIELD NOTES
OF ACTUAL SURVEYS MADE BY ME OR UNDER MY SUPERVISION AND THAT
THE SAME ARE TRUE AND CORRECT TO THE BEST OF MY KNOWLEDGE AND
BELIEF.
REGISTERED LAND SURVEYOR
REGISTRATION NO. 19180
STATE OF COLORADO
635-02-17

REV: 1 03-02-17 M.D. (SHL CHANGE)

BASIS OF BEARINGS
BASIS OF BEARINGS IS A G.P.S. OBSERVATION

BASIS OF ELEVATION

SPOT ELEVATION AT THE NORTHWEST CORNER OF SECTION 30, T5S, R95W, 6th P.M.,
TAKEN FROM THE FORKED GULCH, QUADRANGLE, COLORADO, GARFIELD COUNTY, 7.5
MINUTE QUAD. (TOPOGRAPHIC MAP) PUBLISHED BY THE UNITED STATES DEPARTMENT
OF THE INTERIOR, GEOLOGICAL SURVEY. SAID ELEVATION IS MARKED AS BEING 5966
FEET.



UELS, LLC
Corporate Office * 85 South 200 East
Vernal, UT 84078 * (435) 789-1017



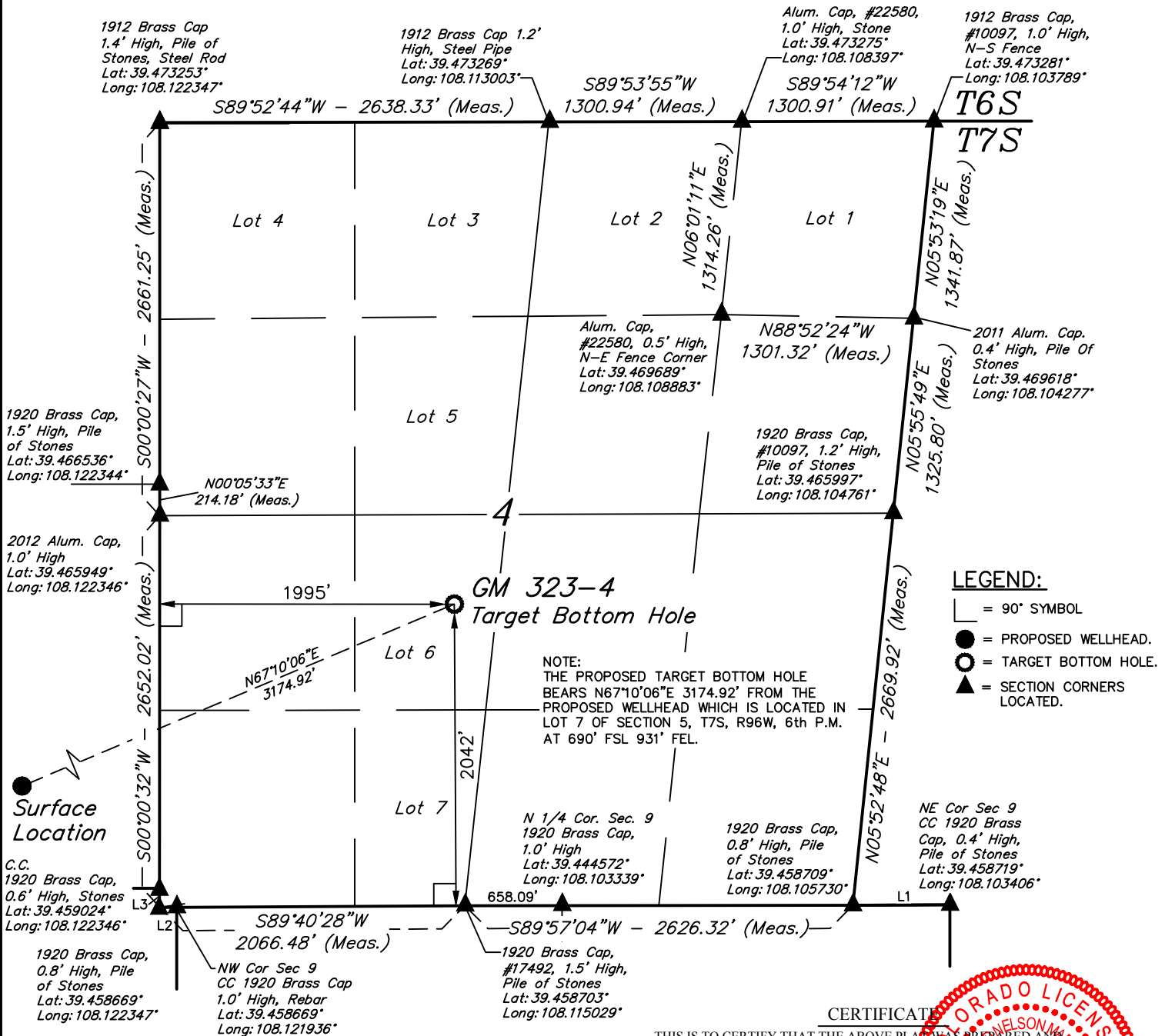
TEP Rocky Mountain LLC

(SURFACE HOLE LOCATION) GM 323-4
LOT 7, SECTION 5, T7S, R96W, 6th P.M.
GARFIELD COUNTY, COLORADO

SURVEYED BY	BRIAN BAKER, J.B.	05-08-13	SCALE
DRAWN BY	M.D.	01-16-17	1" = 1000'

WELL LOCATION PLAT

T7S, R96W, 6th P.M.



LEGEND:

- └ = 90° SYMBOL
- = PROPOSED WELLHEAD.
- = TARGET BOTTOM HOLE.
- ▲ = SECTION CORNERS LOCATED.



NAD 83 (TARGET BOTTOM HOLE)
LATITUDE = 39°27'51.50" (39.464306)
LONGITUDE = 108°06'55.02" (108.115283)
STATE PLANE NAD 83 COLO. CENT.
N: 1604630.10 E: 2261735.59

LINE TABLE		
LINE	DIRECTION	LENGTH
L1	S89°37'41"W	656.34'
L2	N89°51'16"W	115.68'
L3	N00°02'55"E	129.07'

THIS IS TO CERTIFY THAT THE ABOVE PLAT WAS PREPARED AND LOCATION AS SHOWN WAS STAKED ON THE GROUND FROM FIELD NOTES OF ACTUAL SURVEYS MADE BY ME OR UNDER MY SUPERVISION AND THAT THE SAME ARE TRUE AND CORRECT TO THE BEST OF MY KNOWLEDGE AND BELIEF.

CERTIFICATE

REGISTERED LAND SURVEYOR
REGISTRATION NO. 18180
STATE OF COLORADO
03-02-17

PLAT #1

REV: 1 03-02-17 M.D. (SHL CHANGE)

BASIS OF BEARINGS
BASIS OF BEARINGS IS A G.P.S. OBSERVATION

BASIS OF ELEVATION

SPOT ELEVATION AT THE NORTHWEST CORNER OF SECTION 30, T5S, R95W, 6th P.M., TAKEN FROM THE FORKED GULCH, QUADRANGLE, COLORADO, GARFIELD COUNTY, 7.5 MINUTE QUAD. (TOPOGRAPHIC MAP) PUBLISHED BY THE UNITED STATES DEPARTMENT OF THE INTERIOR, GEOLOGICAL SURVEY. SAID ELEVATION IS MARKED AS BEING 5966 FEET.



UELS, LLC
Corporate Office * 85 South 200 East
Vernal, UT 84078 * (435) 789-1017



TEP Rocky Mountain LLC

(TARGET BOTTOM HOLE) GM 323-4
LOT 6, SECTION 4, T7S, R96W, 6th P.M.
GARFIELD COUNTY, COLORADO

SURVEYED BY	BRIAN BAKER, J.B.	05-08-13	SCALE
DRAWN BY	M.D.	01-16-17	1" = 1000'

WELL LOCATION PLAT