



WHITING PETROLEUM CORP.
Project: Weld County, CO
Site: Sec 7-T10N-R57W
Well: Horsetail #07H-0646
Wellbore: Original Hole
Design: Original Hole



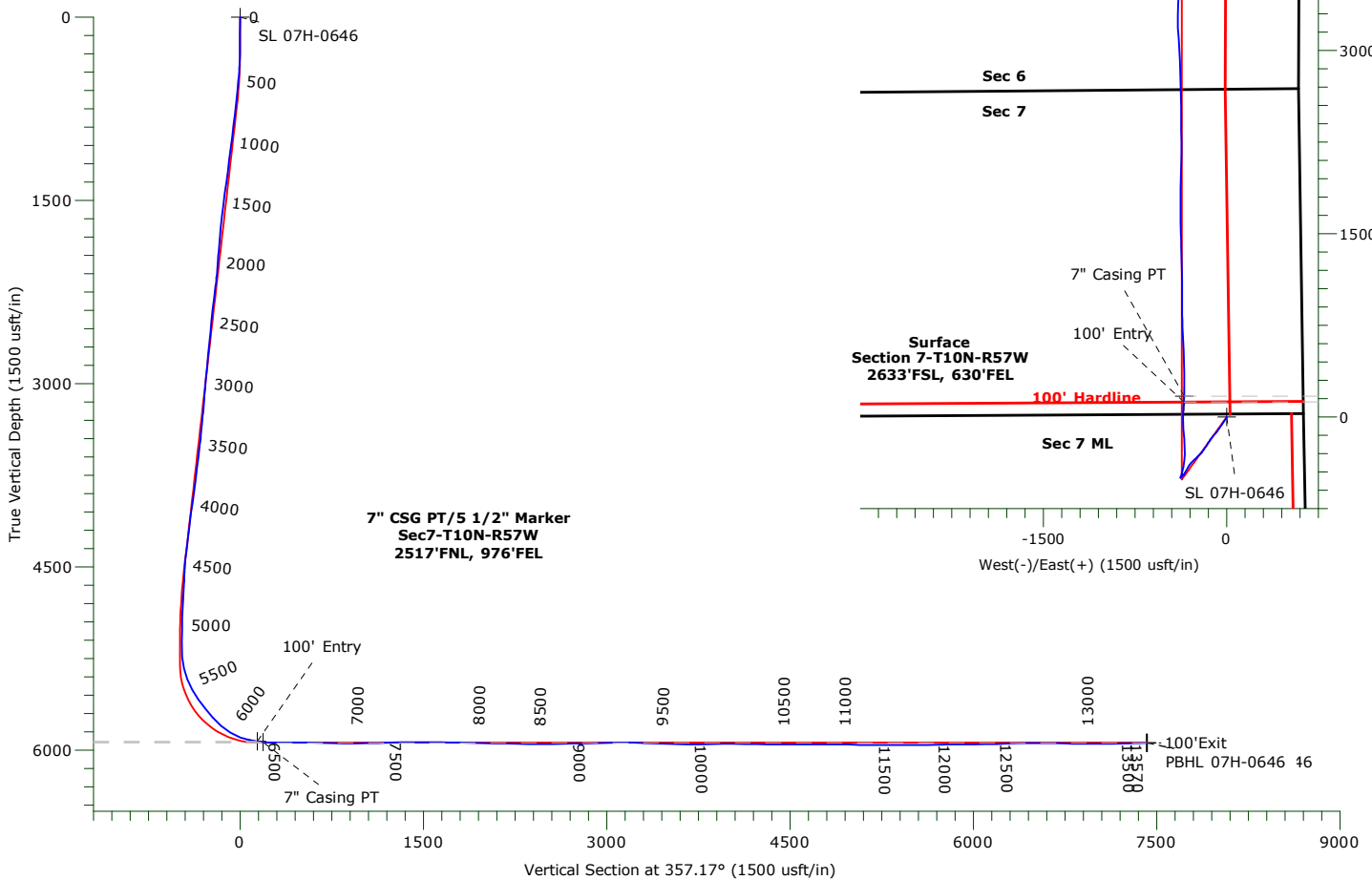
ANNOTATIONS

TVD	MD	+N/-S	+E/-W	Annotation
5928.44	6275.00	123.60	-350.80	100' Entry
5934.17	6323.00	171.16	-347.81	7" Casing PT
5940.60	13561.00	7405.26	-382.10	100' Exit

LEGEND

- ▣ Horsetail #07H-0646, Original Hole, Plan #3 V0
- ▣ Original Hole

**MWD CORRECTION
 WILL BE PROVIDED BY MAGVAR**



WELLBORE TARGET DETAILS

Name	TVD	+N/-S	+E/-W	Northing	Easting	Latitude	Longitude	Shape
SL 07H-0646	0.00	0.00	0.00	1558322.78	3473713.23	40.853417°N	103.787558°W	Point
100' Entry 07H-0646	5928.44	123.60	-350.80	1558439.58	3473360.11	40.853756°N	103.788827°W	Point
7" Casing PT 07H-0646	5934.17	171.16	-347.81	1558487.19	3473362.18	40.853886°N	103.788816°W	Point
PBHL 07H-0646	5940.00	7413.44	-366.42	1565727.76	3473203.72	40.873764°N	103.788883°W	Point
BHL 07H-0646	5940.31	7414.25	-382.35	1565728.26	3473187.78	40.873766°N	103.788941°W	Point
100' Exit 07H-0646	5940.60	7405.26	-382.10	1565719.28	3473188.20	40.873741°N	103.788940°W	Point

WHITING PETROLEUM CORP.

Weld County, CO

Sec 7-T10N-R57W

Horsetail #07H-0646

Original Hole

Design: Original Hole

Standard Survey Report

22 February, 2017

Precision Drilling Corporation

Survey Report

Company:	WHITING PETROLEUM CORP.	Local Co-ordinate Reference:	Well Horsetail #07H-0646
Project:	Weld County, CO	TVD Reference:	4912'GL+21'KB @ 4933.00usft (Unit 406)
Site:	Sec 7-T10N-R57W	MD Reference:	4912'GL+21'KB @ 4933.00usft (Unit 406)
Well:	Horsetail #07H-0646	North Reference:	True
Wellbore:	Original Hole	Survey Calculation Method:	Minimum Curvature
Design:	Original Hole	Database:	Local2

Project	Weld County, CO		
Map System:	US State Plane 1983	System Datum:	Mean Sea Level
Geo Datum:	North American Datum 1983		
Map Zone:	Colorado Northern Zone		

Site	Sec 7-T10N-R57W				
Site Position:		Northing:	1,558,398.04 usft	Latitude:	40.853825°N
From:	Lat/Long	Easting:	3,469,889.54 usft	Longitude:	103.801372°W
Position Uncertainty:	0.00 usft	Slot Radius:	13.20 in	Grid Convergence:	1.10 °

Well	Horsetail #07H-0646					
Well Position	+N-S	0.00 usft	Northing:	1,558,322.78 usft	Latitude:	40.853417°N
	+E-W	0.00 usft	Easting:	3,473,713.23 usft	Longitude:	103.787559°W
Position Uncertainty		0.00 usft	Wellhead Elevation:	0.00 usft	Ground Level:	4,912.00 usft

Wellbore	Original Hole				
Magnetics	Model Name	Sample Date	Declination (°)	Dip Angle (°)	Field Strength (nT)
	IGRF2015	1/19/2017	7.76	67.37	52,771

Design	Original Hole				
Audit Notes:					
Version:	1.0	Phase:	ACTUAL	Tie On Depth:	0.00
Vertical Section:	Depth From (TVD) (usft)	+N-S (usft)	+E-W (usft)	Direction (°)	
	0.00	0.00	0.00	357.17	

Survey Program	Date 2/22/2017				
From (usft)	To (usft)	Survey (Wellbore)	Tool Name	Description	
133.00	13,508.00	Survey #1 (Original Hole)	MWD+IFR1+MS+sag	Fixed:v2:crustal dec & 3-axis correction + sag	
13,570.00	13,570.00	Survey #2 (Original Hole)	BLIND	OWSG BLIND	

Survey										
Measured Depth (usft)	Inclination (°)	Azimuth (°)	Vertical Depth (usft)	+N-S (usft)	+E-W (usft)	Vertical Section (usft)	Dogleg Rate (°/100usft)	Build Rate (°/100usft)	Turn Rate (°/100usft)	
0.00	0.00	0.00	0.00	0.00	0.00	0.00	0.00	0.00	0.00	0.00
133.00	0.57	153.55	133.00	-0.59	0.29	-0.61	0.43	0.43	0.00	
227.00	0.70	187.95	226.99	-1.58	0.42	-1.60	0.42	0.14	36.60	
322.00	0.45	198.06	321.99	-2.51	0.23	-2.52	0.28	-0.26	10.64	
417.00	3.83	213.15	416.91	-5.52	-1.62	-5.43	3.58	3.56	15.88	
512.00	6.61	213.58	511.50	-12.73	-6.38	-12.40	2.93	2.93	0.45	
606.00	6.92	214.57	604.85	-21.90	-12.59	-21.26	0.35	0.33	1.05	
701.00	7.91	216.95	699.05	-31.84	-19.77	-30.83	1.09	1.04	2.51	
796.00	8.53	214.83	793.08	-42.85	-27.72	-41.43	0.73	0.65	-2.23	
890.00	8.43	212.28	886.05	-54.40	-35.38	-52.58	0.41	-0.11	-2.71	

Precision Drilling Corporation

Survey Report

Company:	WHITING PETROLEUM CORP.	Local Co-ordinate Reference:	Well Horsetail #07H-0646
Project:	Weld County, CO	TVD Reference:	4912'GL+21'KB @ 4933.00usft (Unit 406)
Site:	Sec 7-T10N-R57W	MD Reference:	4912'GL+21'KB @ 4933.00usft (Unit 406)
Well:	Horsetail #07H-0646	North Reference:	True
Wellbore:	Original Hole	Survey Calculation Method:	Minimum Curvature
Design:	Original Hole	Database:	Local2

Survey									
Measured Depth (usft)	Inclination (°)	Azimuth (°)	Vertical Depth (usft)	+N/S (usft)	+E/W (usft)	Vertical Section (usft)	Dogleg Rate (°/100usft)	Build Rate (°/100usft)	Turn Rate (°/100usft)
985.00	8.92	212.21	979.96	-66.52	-43.03	-64.31	0.52	0.52	-0.07
1,080.00	8.99	213.88	1,073.81	-78.91	-51.09	-76.29	0.28	0.07	1.76
1,174.00	9.08	214.87	1,166.64	-91.09	-59.42	-88.05	0.19	0.10	1.05
1,269.00	9.36	216.56	1,260.41	-103.45	-68.31	-99.95	0.41	0.29	1.78
1,364.00	9.82	216.98	1,354.08	-116.12	-77.79	-112.14	0.49	0.48	0.44
1,459.00	10.44	217.87	1,447.60	-129.39	-87.94	-124.89	0.67	0.65	0.94
1,553.00	9.53	221.62	1,540.18	-141.93	-98.34	-136.90	1.19	-0.97	3.99
1,648.00	8.94	219.16	1,633.95	-153.53	-108.23	-148.00	0.75	-0.62	-2.59
1,742.00	7.57	220.26	1,726.97	-163.92	-116.84	-157.95	1.47	-1.46	1.17
1,836.00	6.87	218.48	1,820.23	-173.05	-124.34	-166.70	0.78	-0.74	-1.89
1,931.00	6.32	213.21	1,914.60	-181.87	-130.74	-175.20	0.86	-0.58	-5.55
2,015.00	5.21	209.88	1,998.17	-189.05	-135.17	-182.14	1.38	-1.32	-3.96
2,125.00	4.93	208.86	2,107.74	-197.52	-139.94	-190.37	0.27	-0.25	-0.93
2,220.00	8.65	214.79	2,202.06	-206.96	-145.99	-199.50	3.98	3.92	6.24
2,315.00	8.65	214.32	2,295.98	-218.73	-154.09	-210.86	0.07	0.00	-0.49
2,409.00	8.35	213.06	2,388.95	-230.29	-161.80	-222.02	0.38	-0.32	-1.34
2,504.00	7.87	215.50	2,483.00	-241.36	-169.34	-232.71	0.62	-0.51	2.57
2,599.00	7.22	215.33	2,577.17	-251.53	-176.57	-242.51	0.68	-0.68	-0.18
2,693.00	6.94	215.44	2,670.46	-260.98	-183.28	-251.61	0.30	-0.30	0.12
2,788.00	6.98	215.26	2,764.76	-270.37	-189.94	-260.66	0.05	0.04	-0.19
2,882.00	6.55	215.57	2,858.10	-279.39	-196.36	-269.35	0.46	-0.46	0.33
2,977.00	6.27	214.72	2,952.51	-288.06	-202.46	-277.71	0.31	-0.29	-0.89
3,072.00	8.50	226.80	3,046.72	-297.13	-210.54	-286.38	2.85	2.35	12.72
3,167.00	7.42	227.51	3,140.80	-306.08	-220.18	-294.84	1.14	-1.14	0.75
3,262.00	6.49	226.53	3,235.10	-313.92	-228.60	-302.25	0.99	-0.98	-1.03
3,356.00	8.73	223.88	3,328.27	-322.72	-237.40	-310.60	2.41	2.38	-2.82
3,451.00	7.90	223.15	3,422.27	-332.68	-246.86	-320.08	0.88	-0.87	-0.77
3,546.00	11.12	226.97	3,515.95	-343.70	-258.03	-330.54	3.45	3.39	4.02
3,640.00	10.33	225.88	3,608.31	-355.75	-270.70	-341.95	0.87	-0.84	-1.16
3,734.00	10.14	226.41	3,700.81	-367.32	-282.75	-352.91	0.23	-0.20	0.56
3,829.00	9.91	224.10	3,794.36	-378.96	-294.49	-363.96	0.49	-0.24	-2.43
3,923.00	10.32	211.69	3,886.91	-391.93	-304.55	-376.42	2.35	0.44	-13.20
4,018.00	9.66	212.55	3,980.47	-405.89	-313.30	-389.93	0.71	-0.69	0.91
4,113.00	8.47	208.61	4,074.29	-418.75	-320.94	-402.40	1.41	-1.25	-4.15
4,208.00	8.45	209.41	4,168.25	-430.98	-327.72	-414.27	0.13	-0.02	0.84
4,303.00	8.47	208.83	4,262.22	-443.18	-334.52	-426.13	0.09	0.02	-0.61
4,397.00	7.83	209.39	4,355.27	-454.83	-341.00	-437.44	0.69	-0.68	0.60
4,492.00	7.14	209.91	4,449.46	-465.58	-347.12	-447.88	0.73	-0.73	0.55
4,586.00	4.46	250.28	4,543.01	-471.89	-353.48	-453.86	5.02	-2.85	42.95
4,681.00	5.77	216.89	4,637.65	-476.95	-359.83	-458.60	3.36	1.38	-35.15
4,776.00	4.78	227.10	4,732.24	-483.47	-365.59	-464.83	1.43	-1.04	10.75
4,870.00	3.59	226.42	4,825.99	-488.16	-370.59	-469.27	1.27	-1.27	-0.72
4,965.00	2.84	229.28	4,920.84	-491.75	-374.53	-472.66	0.81	-0.79	3.01

Precision Drilling Corporation

Survey Report

Company:	WHITING PETROLEUM CORP.	Local Co-ordinate Reference:	Well Horsetail #07H-0646
Project:	Weld County, CO	TVD Reference:	4912'GL+21'KB @ 4933.00usft (Unit 406)
Site:	Sec 7-T10N-R57W	MD Reference:	4912'GL+21'KB @ 4933.00usft (Unit 406)
Well:	Horsetail #07H-0646	North Reference:	True
Wellbore:	Original Hole	Survey Calculation Method:	Minimum Curvature
Design:	Original Hole	Database:	Local2

Survey										
Measured Depth (usft)	Inclination (°)	Azimuth (°)	Vertical Depth (usft)	+N/-S (usft)	+E/-W (usft)	Vertical Section (usft)	Dogleg Rate (°/100usft)	Build Rate (°/100usft)	Turn Rate (°/100usft)	
5,059.00	0.66	193.77	5,014.79	-493.79	-376.43	-474.60	2.48	-2.32	-37.78	
5,154.00	0.85	175.09	5,109.79	-495.03	-376.50	-475.83	0.32	0.20	-19.66	
5,282.00	3.03	10.66	5,237.74	-492.65	-375.79	-473.49	3.01	1.70	-128.46	
5,377.00	14.16	10.61	5,331.52	-478.71	-373.18	-459.71	11.72	11.72	-0.05	
5,471.00	22.57	16.51	5,420.66	-450.06	-365.92	-431.45	9.15	8.95	6.28	
5,566.00	29.41	16.99	5,506.00	-410.23	-353.91	-392.26	7.20	7.20	0.51	
5,661.00	38.00	3.66	5,585.07	-358.57	-345.20	-341.09	11.89	9.04	-14.03	
5,755.00	37.20	0.18	5,659.55	-301.27	-343.26	-283.95	2.41	-0.85	-3.70	
5,850.00	40.98	357.63	5,733.28	-241.40	-344.46	-224.10	4.32	3.98	-2.68	
5,945.00	49.03	356.55	5,800.39	-174.37	-347.91	-156.98	8.51	8.47	-1.14	
6,039.00	58.22	355.23	5,856.08	-98.97	-353.38	-81.40	9.84	9.78	-1.40	
6,134.00	70.97	0.38	5,896.78	-13.42	-356.46	4.19	14.28	13.42	5.42	
6,229.00	79.48	3.28	5,920.99	78.29	-353.48	95.65	9.43	8.96	3.05	
6,323.00	84.39	3.71	5,934.17	171.16	-347.81	188.12	5.24	5.22	0.46	
6,418.00	89.99	359.07	5,938.83	265.95	-345.51	282.69	7.65	5.89	-4.88	
6,513.00	90.29	358.70	5,938.60	360.94	-347.36	377.65	0.50	0.32	-0.39	
6,608.00	91.17	358.64	5,937.39	455.90	-349.57	472.60	0.93	0.93	-0.06	
6,702.00	88.22	357.91	5,937.89	549.85	-352.40	566.57	3.23	-3.14	-0.78	
6,797.00	88.70	357.68	5,940.44	644.74	-356.05	661.53	0.56	0.51	-0.24	
6,892.00	88.68	357.23	5,942.61	739.62	-360.27	756.51	0.47	-0.02	-0.47	
6,986.00	88.43	359.12	5,944.98	833.54	-363.26	850.46	2.03	-0.27	2.01	
7,081.00	90.52	359.65	5,945.85	928.53	-364.28	945.38	2.27	2.20	0.56	
7,176.00	91.32	359.89	5,944.33	1,023.51	-364.66	1,040.27	0.88	0.84	0.25	
7,270.00	91.50	359.72	5,942.02	1,117.48	-364.98	1,134.14	0.26	0.19	-0.18	
7,365.00	92.58	358.89	5,938.63	1,212.41	-366.13	1,229.01	1.43	1.14	-0.87	
7,459.00	90.70	358.32	5,935.94	1,306.34	-368.42	1,322.94	2.09	-2.00	-0.61	
7,554.00	90.84	357.77	5,934.67	1,401.28	-371.66	1,417.92	0.60	0.15	-0.58	
7,648.00	89.36	358.85	5,934.50	1,495.23	-374.43	1,511.90	1.95	-1.57	1.15	
7,743.00	89.57	358.95	5,935.39	1,590.21	-376.26	1,606.85	0.24	0.22	0.11	
7,838.00	88.42	0.40	5,937.06	1,685.19	-376.80	1,701.74	1.95	-1.21	1.53	
7,933.00	88.87	0.49	5,939.30	1,780.16	-376.06	1,796.56	0.48	0.47	0.09	
8,028.00	89.42	0.44	5,940.72	1,875.15	-375.29	1,891.39	0.58	0.58	-0.05	
8,122.00	88.48	1.54	5,942.44	1,969.12	-373.66	1,985.16	1.54	-1.00	1.17	
8,217.00	88.42	1.00	5,945.01	2,064.06	-371.56	2,079.88	0.57	-0.06	-0.57	
8,311.00	89.17	0.45	5,946.99	2,158.03	-370.37	2,173.68	0.99	0.80	-0.59	
8,406.00	89.19	359.69	5,948.35	2,253.02	-370.25	2,268.55	0.80	0.02	-0.80	
8,501.00	89.30	359.68	5,949.60	2,348.01	-370.78	2,363.45	0.12	0.12	-0.01	
8,595.00	89.47	359.07	5,950.61	2,442.00	-371.80	2,457.37	0.67	0.18	-0.65	
8,690.00	90.75	359.26	5,950.43	2,536.98	-373.19	2,552.31	1.36	1.35	0.20	
8,785.00	91.23	359.05	5,948.79	2,631.96	-374.59	2,647.24	0.55	0.51	-0.22	
8,878.00	91.38	358.73	5,946.67	2,724.92	-376.39	2,740.18	0.38	0.16	-0.34	
8,972.00	91.23	358.20	5,944.53	2,818.86	-378.90	2,834.13	0.59	-0.16	-0.56	
9,064.00	91.81	357.36	5,942.09	2,910.76	-382.47	2,926.09	1.11	0.63	-0.91	

Precision Drilling Corporation

Survey Report

Company:	WHITING PETROLEUM CORP.	Local Co-ordinate Reference:	Well Horsetail #07H-0646
Project:	Weld County, CO	TVD Reference:	4912'GL+21'KB @ 4933.00usft (Unit 406)
Site:	Sec 7-T10N-R57W	MD Reference:	4912'GL+21'KB @ 4933.00usft (Unit 406)
Well:	Horsetail #07H-0646	North Reference:	True
Wellbore:	Original Hole	Survey Calculation Method:	Minimum Curvature
Design:	Original Hole	Database:	Local2

Survey										
Measured Depth (usft)	Inclination (°)	Azimuth (°)	Vertical Depth (usft)	+N/S (usft)	+E/W (usft)	Vertical Section (usft)	Dogleg Rate (°/100usft)	Build Rate (°/100usft)	Turn Rate (°/100usft)	
9,157.00	90.20	356.80	5,940.46	3,003.62	-387.20	3,019.07	1.83	-1.73	-0.60	
9,251.00	90.60	356.37	5,939.80	3,097.45	-392.80	3,113.06	0.62	0.43	-0.46	
9,344.00	89.59	357.06	5,939.65	3,190.29	-398.13	3,206.06	1.32	-1.09	0.74	
9,436.00	87.53	0.49	5,941.96	3,282.22	-400.10	3,297.98	4.35	-2.24	3.73	
9,530.00	88.07	3.08	5,945.57	3,376.10	-397.17	3,391.59	2.81	0.57	2.76	
9,624.00	88.55	3.30	5,948.34	3,469.91	-391.94	3,485.03	0.56	0.51	0.23	
9,716.00	88.74	3.16	5,950.52	3,561.74	-386.76	3,576.49	0.26	0.21	-0.15	
9,810.00	88.74	2.56	5,952.58	3,655.60	-382.07	3,670.01	0.64	0.00	-0.64	
9,903.00	91.21	1.90	5,952.62	3,748.52	-378.45	3,762.64	2.75	2.66	-0.71	
9,996.00	91.82	1.70	5,950.16	3,841.45	-375.53	3,855.30	0.69	0.66	-0.22	
10,089.00	90.05	0.58	5,948.65	3,934.41	-373.69	3,948.06	2.25	-1.90	-1.20	
10,182.00	89.72	359.04	5,948.83	4,027.41	-373.99	4,040.96	1.69	-0.35	-1.66	
10,276.00	89.36	357.98	5,949.59	4,121.37	-376.44	4,134.93	1.19	-0.38	-1.13	
10,369.00	89.14	358.81	5,950.81	4,214.32	-379.04	4,227.90	0.92	-0.24	0.89	
10,462.00	89.35	1.60	5,952.03	4,307.31	-378.71	4,320.75	3.01	0.23	3.00	
10,555.00	90.05	2.51	5,952.52	4,400.24	-375.37	4,413.41	1.23	0.75	0.98	
10,649.00	89.76	1.86	5,952.67	4,494.17	-371.79	4,507.05	0.76	-0.31	-0.69	
10,741.00	89.76	1.42	5,953.06	4,586.14	-369.16	4,598.77	0.48	0.00	-0.48	
10,836.00	89.93	1.39	5,953.32	4,681.11	-366.83	4,693.51	0.18	0.18	-0.03	
10,929.00	90.45	1.55	5,953.01	4,774.08	-364.44	4,786.25	0.59	0.56	0.17	
11,022.00	89.21	359.29	5,953.28	4,867.06	-363.76	4,879.09	2.77	-1.33	-2.43	
11,116.00	88.91	358.08	5,954.83	4,961.03	-365.92	4,973.04	1.33	-0.32	-1.29	
11,209.00	88.98	357.60	5,956.54	5,053.94	-369.42	5,066.02	0.52	0.08	-0.52	
11,302.00	89.04	358.05	5,958.15	5,146.86	-372.95	5,159.00	0.49	0.06	0.48	
11,394.00	89.97	0.46	5,958.94	5,238.84	-374.15	5,250.93	2.81	1.01	2.62	
11,489.00	89.94	1.49	5,959.01	5,333.83	-372.53	5,345.72	1.08	-0.03	1.08	
11,582.00	90.50	0.46	5,958.66	5,426.81	-370.95	5,438.51	1.26	0.60	-1.11	
11,677.00	90.64	0.36	5,957.71	5,521.81	-370.27	5,533.35	0.18	0.15	-0.11	
11,771.00	89.91	359.87	5,957.26	5,615.80	-370.08	5,627.23	0.94	-0.78	-0.52	
11,866.00	91.13	0.83	5,956.40	5,710.79	-369.50	5,722.07	1.63	1.28	1.01	
11,961.00	90.71	0.34	5,954.87	5,805.78	-368.53	5,816.89	0.68	-0.44	-0.52	
12,055.00	90.84	359.72	5,953.60	5,899.77	-368.48	5,910.77	0.67	0.14	-0.66	
12,150.00	90.87	359.45	5,952.18	5,994.75	-369.17	6,005.67	0.29	0.03	-0.28	
12,245.00	90.87	359.41	5,950.74	6,089.74	-370.11	6,100.59	0.04	0.00	-0.04	
12,339.00	91.12	358.08	5,949.11	6,183.70	-372.17	6,194.53	1.44	0.27	-1.41	
12,434.00	91.59	359.81	5,946.86	6,278.65	-373.92	6,289.46	1.89	0.49	1.82	
12,529.00	91.90	358.89	5,943.97	6,373.60	-375.00	6,384.34	1.02	0.33	-0.97	
12,623.00	89.70	358.44	5,942.66	6,467.56	-377.19	6,478.30	2.39	-2.34	-0.48	
12,718.00	89.96	358.68	5,942.94	6,562.53	-379.58	6,573.27	0.37	0.27	0.25	
12,813.00	88.35	1.01	5,944.34	6,657.51	-379.83	6,668.14	2.98	-1.69	2.45	
12,907.00	88.43	1.09	5,946.98	6,751.46	-378.11	6,761.89	0.12	0.09	0.09	
13,002.00	89.78	0.93	5,948.47	6,846.43	-376.44	6,856.66	1.43	1.42	-0.17	
13,097.00	89.79	0.09	5,948.82	6,941.42	-375.59	6,951.50	0.88	0.01	-0.88	
13,192.00	90.46	359.79	5,948.62	7,036.42	-375.69	7,046.39	0.77	0.71	-0.32	

Precision Drilling Corporation

Survey Report

Company: WHITING PETROLEUM CORP.	Local Co-ordinate Reference: Well Horsetail #07H-0646
Project: Weld County, CO	TVD Reference: 4912'GL+21'KB @ 4933.00usft (Unit 406)
Site: Sec 7-T10N-R57W	MD Reference: 4912'GL+21'KB @ 4933.00usft (Unit 406)
Well: Horsetail #07H-0646	North Reference: True
Wellbore: Original Hole	Survey Calculation Method: Minimum Curvature
Design: Original Hole	Database: Local2

Survey									
Measured Depth (usft)	Inclination (°)	Azimuth (°)	Vertical Depth (usft)	+N/-S (usft)	+E/-W (usft)	Vertical Section (usft)	Dogleg Rate (°/100usft)	Build Rate (°/100usft)	Turn Rate (°/100usft)
13,286.00	90.77	359.25	5,947.61	7,130.41	-376.48	7,140.31	0.66	0.33	-0.57
13,381.00	91.37	358.96	5,945.83	7,225.38	-377.96	7,235.23	0.70	0.63	-0.31
13,475.00	91.74	358.74	5,943.28	7,319.33	-379.85	7,329.16	0.46	0.39	-0.23
13,508.00	91.80	358.44	5,942.26	7,352.31	-380.66	7,362.13	0.93	0.18	-0.91
13,570.00	91.80	358.44	5,940.31	7,414.25	-382.35	7,424.09	0.00	0.00	0.00

Design Targets										
Target Name	- hit/miss target	Dip Angle (°)	Dip Dir. (°)	TVD (usft)	+N/-S (usft)	+E/-W (usft)	Northing (usft)	Easting (usft)	Latitude	Longitude
SL 07H-0646		0.00	0.00	0.00	0.00	0.00	1,558,322.78	3,473,713.23	40.853417°N	103.787559°W
- actual wellpath hits target center										
- Point										
100' Entry 07H-0646		0.00	0.00	5,928.44	123.60	-350.80	1,558,439.59	3,473,360.11	40.853756°N	103.788827°W
- actual wellpath hits target center										
- Point										
7" Casing PT 07H-0646		0.00	0.00	5,934.17	171.16	-347.81	1,558,487.20	3,473,362.18	40.853887°N	103.788816°W
- actual wellpath misses target center by 0.01usft at 6323.00usft MD (5934.17 TVD, 171.16 N, -347.81 E)										
- Point										
PBHL 07H-0646		0.00	0.00	5,940.00	7,413.44	-366.42	1,565,727.77	3,473,203.72	40.873764°N	103.788884°W
- actual wellpath misses target center by 15.90usft at 13568.77usft MD (5940.35 TVD, 7413.02 N, -382.31 E)										
- Point										
BHL 07H-0646		0.00	0.00	5,940.31	7,414.25	-382.35	1,565,728.27	3,473,187.78	40.873766°N	103.788941°W
- actual wellpath misses target center by 0.01usft at 13570.00usft MD (5940.31 TVD, 7414.25 N, -382.35 E)										
- Point										
100' Exit 07H-0646		0.00	0.00	5,940.60	7,405.26	-382.10	1,565,719.29	3,473,188.20	40.873742°N	103.788940°W
- actual wellpath hits target center										
- Point										

Design Annotations					
Measured Depth (usft)	Vertical Depth (usft)	Local Coordinates		Comment	
		+N/-S (usft)	+E/-W (usft)		
6,275.00	5,928.44	123.60	-350.80	100' Entry	
6,323.00	5,934.17	171.16	-347.81	7" Casing PT	
13,561.00	5,940.60	7,405.26	-382.10	100'Exit	

Checked By: _____	Approved By: _____	Date: _____
-------------------	--------------------	-------------