

March 13, 2017



410 17th Street, Suite 1400
Denver, CO 80202
(720) 440-6100 phone
(720) 305-0804 fax

Bonanzacrk.com

Colorado Oil and Gas Conservation Commission
The Chancery Building
1120 Lincoln Street, Suite 801
Denver, CO 80203

Attn: Matthew Lepore, Director

Re: Notice of 318A.a.(4)D. Proposed Niobrara Horizontal Wellbore Spacing Unit
Pronghorn 24-8-5XRLNB
SHL: SWSW 407' FSL & 1,335' FWL, Section 8, T5N, R61W, Weld County, CO
Top of Production: SESW 531' FSL & 2007' FWL, Section 8-T5N-R61W
Bottom of Production: NENW 470' FNL & 1976' FWL, Section 5-T5N-R61W, Weld County, Colorado

Director Lepore:

Bonanza Creek Energy Operating Company, LLC (Bonanza) intends to permit, drill and operate the referenced Niobrara Horizontal Well. As defined by Colorado Oil and Gas Conservation Commission (COGCC) Rule 318A.a.(4)D., Bonanza proposes the following wellbore spacing unit:

E2W2 Section 8-T5N-R61W 6th PM, Weld County, CO – containing 160 Acres more or less
E2W2 Section 5-T5N-R61W 6th PM, Weld County, CO – containing 160 Acres more or less

Bonanza is the sole mineral lease holder in the proposed spacing unit, and no mineral owner notifications were required.

Bonanza respectfully requests that you review the enclosed wellbore spacing unit documentation and approve the referenced Application for Permit to Drill.

Please do not hesitate to call or email me at (303) 803-1718 or JVigil@BonanzaCrk.com should you have any questions pertaining to this matter.

Sincerely,

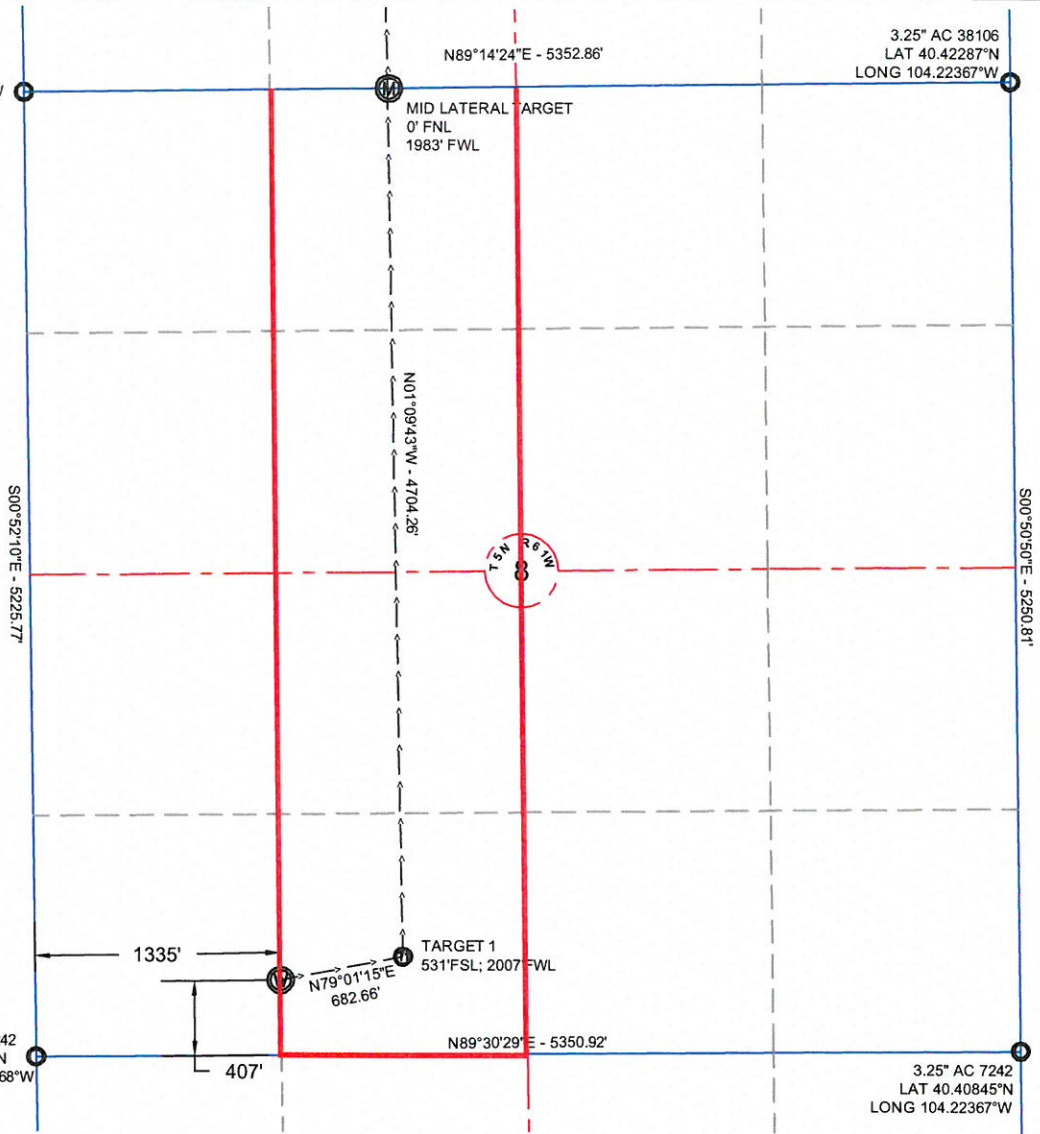
A handwritten signature in blue ink that reads 'Julie L. Vigil'.

Julie L. Vigil
Sr. Regulatory Specialist
BONANZA CREEK ENERGY OPERATING COMPANY, LLC.

Z:\PROJECTS\1319-01 BONANZA SW-61W.DWG\PRONGHORN J-8 CERTS.dwg
SAVED DATE 2016-09-22 15:01

NOTE:

UNDER COLORADO LAW, YOU MUST COMMENCE ANY LEGAL ACTION BASED ON ANY DEFECT IN THIS CERTIFICATE WITHIN THREE YEARS AFTER DEFECT IS DISCOVERED. IN NO EVENT MAY ANY ACTION BASED UPON ANY DEFECT IN THIS SURVEY BE COMMENCED MORE THAN TEN YEAR AFTER DATE OF THIS CERTIFICATE SHOWN HEREON (13-80105 C.R.S.)



NOTES:

- ALL BEARINGS ARE GRID BASED UPON THE COLORADO STATE PLANE COORDINATE SYSTEM, NORTH ZONE, NAD83(2011) DERIVED FROM POST-PROCESSED STATIC GPS OBSERVATIONS.
- DISTANCES ARE ON GRID
- VERTICAL DATUM IS NAVD88 BASED UPON GPS OBSERVATIONS
- PDOP VALUE EQUALS 2.1.
- GPS OPERATOR: MARC MAYER 9-7-16.
- GROUND ELEVATION AT WELLHEAD = 4608'
- ALL SECTION LENGTHS ARE MEASURED DISTANCES UNLESS NOTED BY (R), RECORD BEARING AND DISTANCE.
- NEAREST CULTURAL DISTANCES
 - BUILDINGS: 5280' +
 - BUILDING UNIT: 5280' +
 - HIGH OCCUPANCY BUILDING UNIT: 5280' +
 - DESIGNATED OUTSIDE ACTIVITY AREA: 5280' +
 - PUBLIC ROAD: 5280' +
 - ABOVE GROUND UTILITY: 452' +/-
 - RAILROAD: 5280' +
 - PROPERTY LINE: 407' +/-

4	NAD 83		STATE PLANE COORDINATES	
24-8-5XRLNB	LATITUDE(N)	LONGITUDE(W)	NORTHING	EASTING
SURFACE	40.4096322	104.2380888	1394570	3351394
TARGET 1	40.4099629	104.2356758	1394700	3352064
MID LATERAL	40.4228759	104.2357775	1399403	3351968
BOTTOM HOLE	40.4361611	104.2359031	1404242	3351864

PAD CORNERS	NAD 83	
PH J-8 PAD	LATITUDE(N)	LONGITUDE(W)
NW	40.4100867	104.2394093
NE	40.4100652	104.2374344
SE	40.4087477	104.2374589
SW	40.4087692	104.2394338

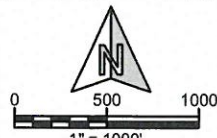
CERTIFICATE OF SURVEYOR:

I, DAVID A. FEHRINGER OF LANDER, WYOMING HEREBY CERTIFY THAT THIS WELL LOCATION CERTIFICATE WAS PREPARED FROM NOTES TAKEN DURING AN ACTUAL SURVEY ON SEPTEMBER 7, 2016; AND THAT IT CORRECTLY SHOWS THE DRILLING LOCATION OF BONANZA CREEK ENERGY, INC. PRONGHORN 24-8-5XRLNB AS STAKED DURING SAID SURVEY. THIS MAP DOES NOT REPRESENT A BOUNDARY SURVEY OR AN IMPROVEMENT LOCATION PLAT AND SHOULD NOT BE USED FOR THE ESTABLISHMENT OF BOUNDARY LINES.



WILLIAM H. SMITH & ASSOCIATES, Inc.
155 N. 1st Street
Lander, WY 82520
Phone: 307-335-5646

Drawn By: DAF
Job No.: 15043
Checked By: MAM
Date: 09/20/16
Revision:



IF BAR LENGTH DOES NOT EQUAL 1" (ONE INCH), THIS PAGE WAS NOT PLOTTED TO THE INTENDED SCALE.

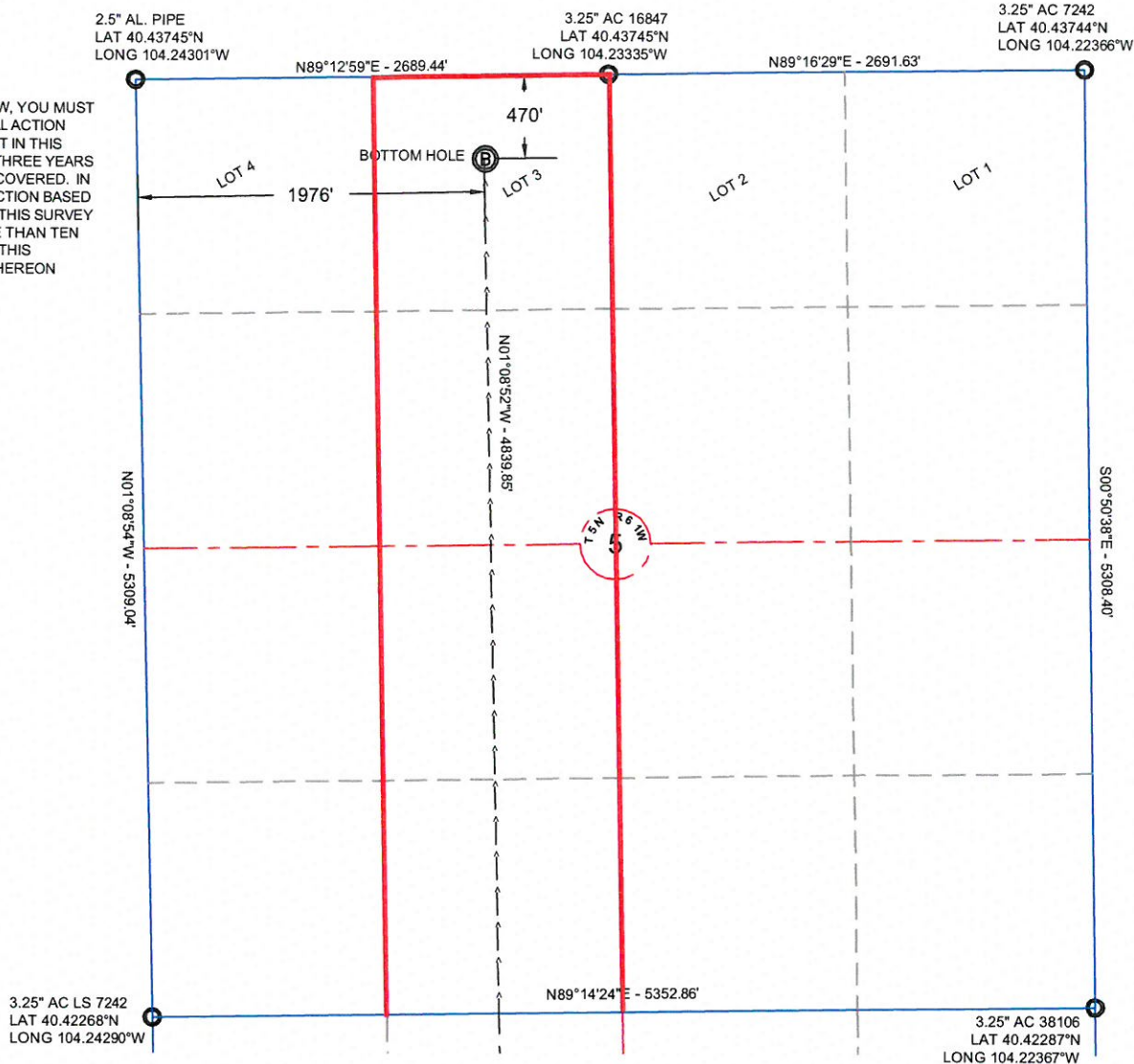
LOCATION CERTIFICATE

**PRONGHORN
24-8-5XRLNB
SURFACE HOLE**
SW¼ SW¼, SECTION 8,
T.5N., R.61W., 6th PM
WELD COUNTY, COLORADO

BONANZA CREEK
410 17th Street
Denver, CO 80202
(720) 440-6100

SHEET
1
OF
2

NOTE:
UNDER COLORADO LAW, YOU MUST COMMENCE ANY LEGAL ACTION BASED ON ANY DEFECT IN THIS CERTIFICATE WITHIN THREE YEARS AFTER DEFECT IS DISCOVERED. IN NO EVENT MAY ANY ACTION BASED UPON ANY DEFECT IN THIS SURVEY BE COMMENCED MORE THAN TEN YEAR AFTER DATE OF THIS CERTIFICATE SHOWN HEREON (13-80105 C.R.S.)



- NOTES:**
- ALL BEARINGS ARE GRID BASED UPON THE COLORADO STATE PLANE COORDINATE SYSTEM, NORTH ZONE, NAD83(2011) DERIVED FROM POST-PROCESSED STATIC GPS OBSERVATIONS.
 - DISTANCES ARE ON GRID
 - VERTICAL DATUM IS NAVD88 BASED UPON GPS OBSERVATIONS
 - PDOP VALUE EQUALS 2.1.
 - GPS OPERATOR: MARC MAYER 9-7-16.
 - GROUND ELEVATION AT WELLHEAD = 4608'
 - ALL SECTION LENGTHS ARE MEASURED DISTANCES UNLESS NOTED BY (R), RECORD BEARING AND DISTANCE.
 - NEAREST CULTURAL DISTANCES
 - BUILDINGS: 5280' +
 - BUILDING UNIT: 5280' +
 - HIGH OCCUPANCY BUILDING UNIT: 5280' +
 - DESIGNATED OUTSIDE ACTIVITY AREA: 5280' +
 - PUBLIC ROAD: 5280' +
 - ABOVE GROUND UTILITY: 452' +/-
 - RAILROAD: 5280' +
 - PROPERTY LINE: 407' +/-

CERTIFICATE OF SURVEYOR:

I, DAVID A. FEHRINGER OF LANDER, WYOMING HEREBY CERTIFY THAT THIS WELL LOCATION CERTIFICATE WAS PREPARED FROM NOTES TAKEN DURING AN ACTUAL SURVEY ON SEPTEMBER 7, 2016; AND THAT IT CORRECTLY SHOWS THE DRILLING LOCATION OF BONANZA CREEK ENERGY, INC. PRONGHORN 24-8-5XRLNB AS STAKED DURING SAID SURVEY. THIS MAP DOES NOT REPRESENT A BOUNDARY SURVEY OR AN IMPROVEMENT LOCATION PLAT AND SHOULD NOT BE USED FOR THE ESTABLISHMENT OF BOUNDARY LINES.

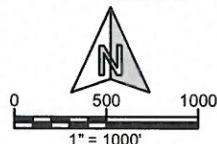
4	NAD 83		STATE PLANE COORDINATES	
24-8-5XRLNB	LATITUDE(N)	LONGITUDE(W)	NORTHING	EASTING
SURFACE	40.4096322	104.2380888	1394570	3351394
TARGET 1	40.4099629	104.2356758	1394700	3352064
MID LATERAL	40.4228759	104.2357775	1399403	3351968
BOTTOM HOLE	40.4361610	104.2358780	1404242	3351871

PAD CORNERS	NAD 83	
PH J-8 PAD	LATITUDE(N)	LONGITUDE(W)
NW	40.4100867	104.2394093
NE	40.4100652	104.2374344
SE	40.4087477	104.2374589
SW	40.4087692	104.2394338



WILLIAM H. SMITH & ASSOCIATES, Inc.
155 N. 1st Street
Lander, WY 82520
Phone: 307-335-5646

Drawn By: DAF
Job No.: 15043
Revision:
Checked By: MAM
Date: 09/20/16



IF BAR LENGTH DOES NOT EQUAL 1" (ONE INCH), THIS PAGE WAS NOT PLOTTED TO THE INTENDED SCALE.

LOCATION CERTIFICATE

**PRONGHORN
24-8-5XRLNB
BOTTOM HOLE**
NE $\frac{1}{4}$ NW $\frac{1}{4}$ (L3), SECTION 5,
T.5N., R.61W., 6th PM
WELD COUNTY, COLORADO



410 17th Street
Denver, CO 80202
(720) 440-6100

SHEET
2
OF
2