

BONANZA CREEK ENERGY INC.

WELD COUNTY, COLORADO (NAD 83)

SW SW SEC. 8 T5N R61W 6th P.M.

PRONGHORN 24-8-5XRLNB

ORIGINAL WELLBORE

13 October, 2016

Plan: PROPOSAL #1





Project: WELD COUNTY, COLORADO (NAD 83)
Site: SW SW SEC. 8 T5N R61W 6th P.M.
Well: PRONGHORN 24-8-5XRLNB
Wellbore: ORIGINAL WELLBORE
Design: PROPOSAL #1

ANNOTATIONS

TVD	MD	Inc	Azi	+N/-S	+E/-W	VSect	Dep	Annotation
0.0	0.0	0.00	0.00	0.0	0.0	0.0	0.0	SHL: 407ft FSL & 1335ft FWL of Sec 8
1500.0	1500.0	0.00	0.00	0.0	0.0	0.0	0.0	SURFACE CASING
1700.0	1700.0	0.00	0.00	0.0	0.0	0.0	0.0	START NUDGE (2°/100ft BUR)
2465.1	2474.5	15.49	120.36	-52.6	89.8	-46.8	104.0	EOB TO 15.49° INC
4537.8	4625.4	15.49	120.36	-342.9	585.4	-305.5	678.5	END OF TANGENT
5302.9	5399.8	0.00	0.00	-395.5	675.2	-352.3	782.5	EOD TO VERTICAL
5332.9	5429.8	0.00	0.00	-395.5	675.2	-352.3	782.5	KOP (8°/100ft BUR)
6024.7	6367.3	75.00	359.65	135.3	672.0	177.3	1313.3	START OF TANGENT
6050.6	6467.3	75.00	359.65	231.9	671.4	273.6	1409.9	END OF TANGENT
6075.0	6654.8	90.00	359.65	417.3	670.2	458.6	1595.3	HZ LP *NEW*: 827.8ft FSL & 2005.2ft FWL of Sec 8
6075.0	11062.5	90.00	359.66	4824.9	643.5	4855.8	6003.0	MID-LAT TGT @ 1983ft FWL
6075.0	11064.7	90.00	359.59	4827.1	643.5	4857.9	6005.2	EOT TO 359.59° AZ
6075.0	15902.6	90.00	359.58	9664.8	608.4	9684.0	10843.1	BHL: 470ft FNL & 1976ft FWL of Sec 5

PROPOSED LOCAL COORDINATES:

SHL: 407ft FSL & 1335ft FWL Sec 8

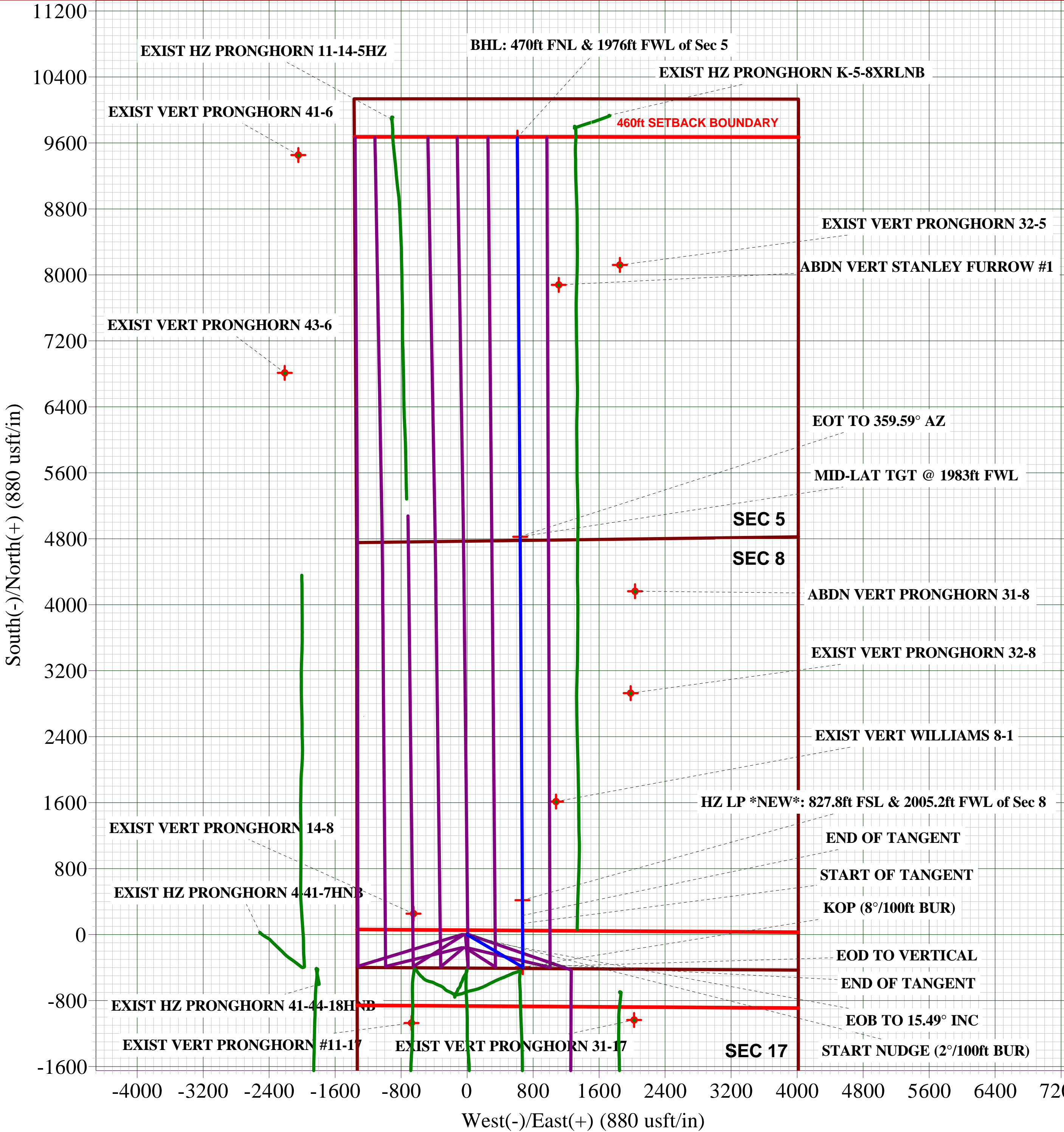
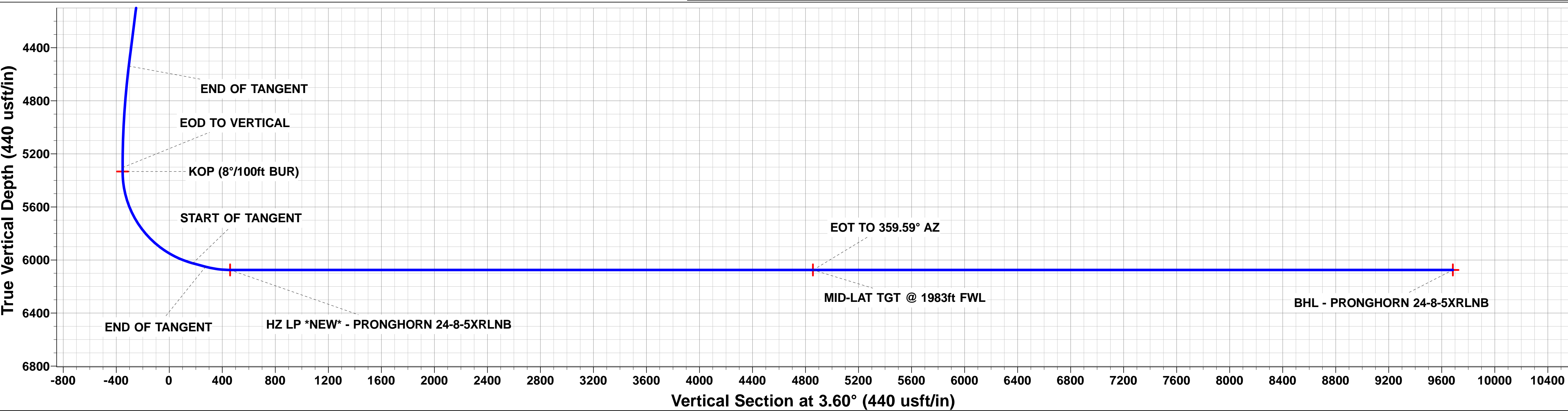
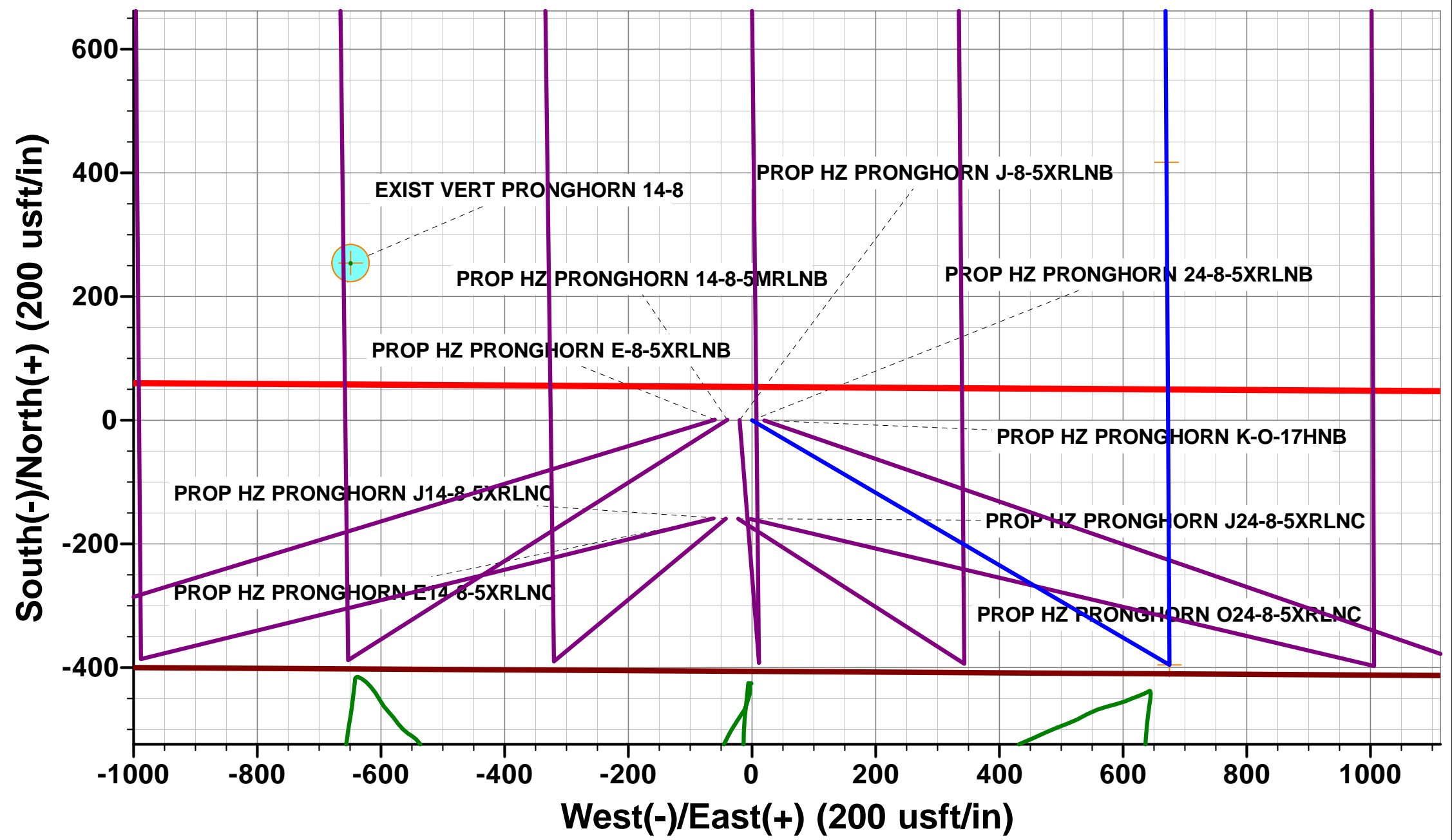
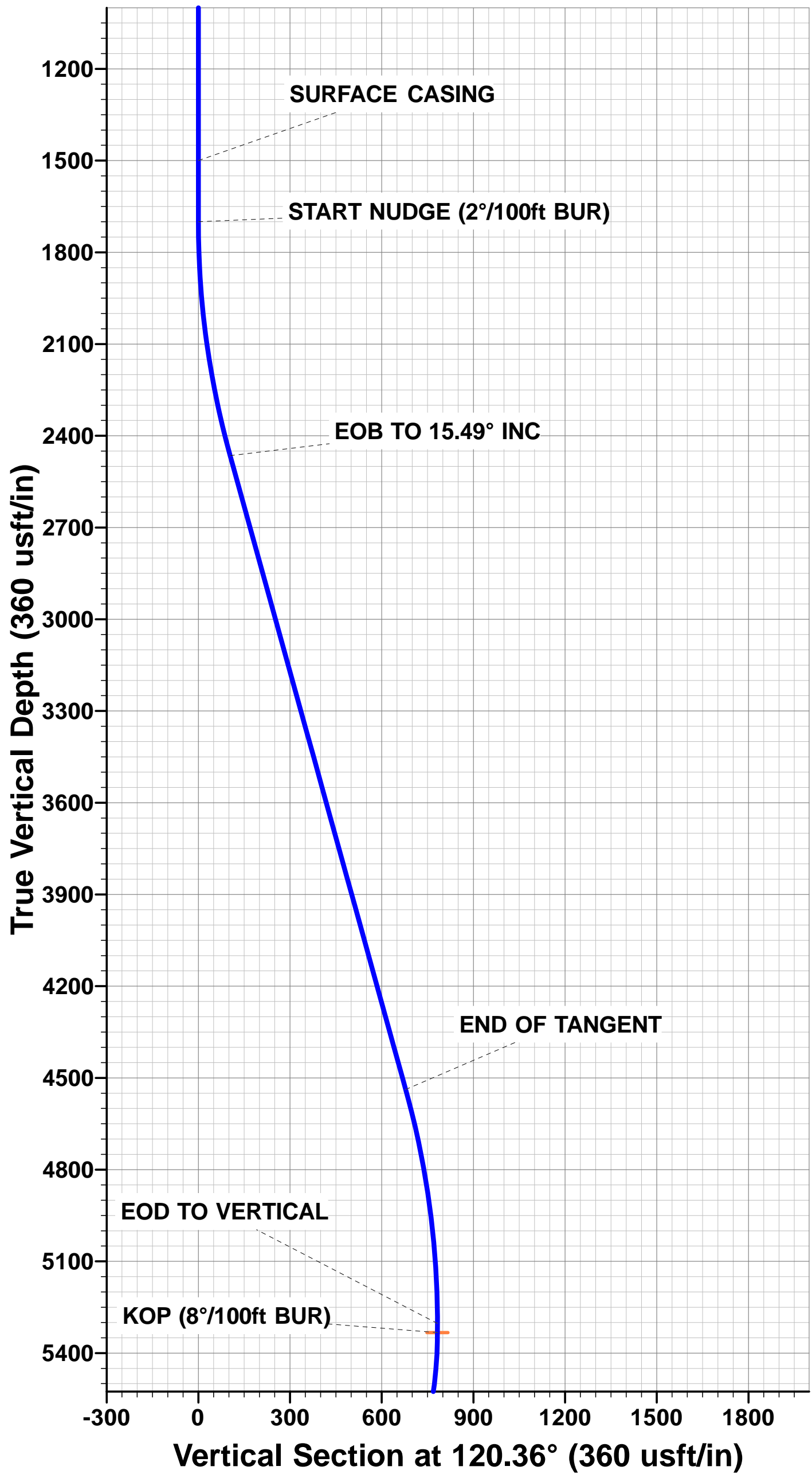
HZ LP *NEW*: 827.8ft FSL & 2005.2ft FWL Sec 8

MID-LAT: 0ft FNL & 1983ft FWL Sec 8

BHL: 470ft FNL & 1976ft FWL Sec 5

WELLBORE TARGET DETAILS (LAT/LONG)

Name	TVD	+N/-S	+E/-W	Latitude	Longitude
KOP - PRONGHORN 24-8-5XRLNB	5332.9	-395.5	675.2	40.408547	-104.235664
BHL - PRONGHORN 24-8-5XRLNB	6075.0	9664.8	608.4	40.436161	-104.235903
HZ LP *NEW* - PRONGHORN 24-8-5XRLNB	6075.0	417.3	670.2	40.410778	-104.235682
MID-LAT TGT - PRONGHORN 24-8-5XRLNB	6075.0	4824.9	643.5	40.422876	-104.235778



Database:	EDM 5000.1 Single User Db	Local Co-ordinate Reference:	Well PRONGHORN 24-8-5XRLNB
Company:	BONANZA CREEK ENERGY INC.	TVD Reference:	KB-EST @ 4625.0usft (Original Well Elev)
Project:	WELD COUNTY, COLORADO (NAD 83)	MD Reference:	KB-EST @ 4625.0usft (Original Well Elev)
Site:	SW SW SEC. 8 T5N R61W 6th P.M.	North Reference:	True
Well:	PRONGHORN 24-8-5XRLNB	Survey Calculation Method:	Minimum Curvature
Wellbore:	ORIGINAL WELLBORE		
Design:	PROPOSAL #1		

Project	WELD COUNTY, COLORADO (NAD 83)		
Map System:	US State Plane 1983	System Datum:	Mean Sea Level
Geo Datum:	North American Datum 1983		
Map Zone:	Colorado Northern Zone		Using geodetic scale factor

Site	SW SW SEC. 8 T5N R61W 6th P.M.				
Site Position:		Northing:	1,394,569.77 usft	Latitude:	40.409635
From:	Lat/Long	Easting:	3,351,333.50 usft	Longitude:	-104.238304
Position Uncertainty:	0.0 usft	Slot Radius:	1.10000 ft	Grid Convergence:	0.82 °

Well	PRONGHORN 24-8-5XRLNB					
Well Position	+N/-S	-0.9 usft	Northing:	1,394,569.71 usft	Latitude:	40.409632
	+E/-W	60.0 usft	Easting:	3,351,393.54 usft	Longitude:	-104.238089
Position Uncertainty		0.0 usft	Wellhead Elevation:	usft	Ground Level:	4,608.0 usft

Wellbore	ORIGINAL WELLBORE				
Magnetics	Model Name	Sample Date	Declination (°)	Dip Angle (°)	Field Strength (nT)
	IGRF2015	13/10/2016	8.00	66.96	52,531

Design	PROPOSAL #1			
Audit Notes:				
Version:	Phase:	PROTOTYPE	Tie On Depth:	0.0
Vertical Section:	Depth From (TVD) (usft)	+N/-S (usft)	+E/-W (usft)	Direction (°)
	6,075.0	0.0	0.0	3.60

Plan Sections											
MD (usft)	Inc (°)	Azi (°)	Vertical Depth	SS (usft)	+N/-S (usft)	+E/-W (usft)	Dogleg Rate (°/100usf)	Build Rate (°/100usf)	Turn Rate (°/100usf)	TFO (°)	Target
0.0	0.00	0.00	0.0	-4,625.0	0.0	0.0	0.00	0.00	0.00	0.00	
1,700.0	0.00	0.00	1,700.0	-2,925.0	0.0	0.0	0.00	0.00	0.00	0.00	
2,474.5	15.49	120.36	2,465.1	-2,159.9	-52.6	89.8	2.00	2.00	0.00	120.36	
4,625.4	15.49	120.36	4,537.8	-87.2	-342.9	585.4	0.00	0.00	0.00	0.00	
5,399.8	0.00	0.00	5,302.9	677.9	-395.5	675.2	2.00	-2.00	0.00	180.00	
5,429.8	0.00	0.00	5,332.9	707.9	-395.5	675.2	0.00	0.00	0.00	0.00	KOP - PRONGHOF
6,367.3	75.00	359.65	6,024.7	1,399.7	135.3	672.0	8.00	8.00	0.00	359.65	
6,467.3	75.00	359.65	6,050.6	1,425.6	231.9	671.4	0.00	0.00	0.00	0.00	
6,654.8	90.00	359.65	6,075.0	1,450.0	417.3	670.2	8.00	8.00	0.00	0.00	
11,062.5	90.00	359.66	6,075.0	1,450.0	4,824.9	643.5	0.00	0.00	0.00	95.42	MID-LAT TGT - PR
11,064.7	90.00	359.59	6,075.0	1,450.0	4,827.1	643.5	3.00	0.00	-3.00	270.00	
15,902.6	90.00	359.58	6,075.0	1,450.0	9,664.8	608.4	0.00	0.00	0.00	-84.27	BHL - PRONGHOR

Database:	EDM 5000.1 Single User Db	Local Co-ordinate Reference:	Well PRONGHORN 24-8-5XRLNB
Company:	BONANZA CREEK ENERGY INC.	TVD Reference:	KB-EST @ 4625.0usft (Original Well Elev)
Project:	WELD COUNTY, COLORADO (NAD 83)	MD Reference:	KB-EST @ 4625.0usft (Original Well Elev)
Site:	SW SW SEC. 8 T5N R61W 6th P.M.	North Reference:	True
Well:	PRONGHORN 24-8-5XRLNB	Survey Calculation Method:	Minimum Curvature
Wellbore:	ORIGINAL WELLBORE		
Design:	PROPOSAL #1		

Planned Survey

MD (usft)	Inc (°)	Azi (°)	TVD (usft)	SS (usft)	+N/-S (usft)	+E/-W (usft)	Vertical Section (usft)	Dogleg Rate (°/100usft)	Build Rate (°/100usft)	Turn Rate (°/100usft)
SHL: 407ft FSL & 1335ft FWL of Sec 8										
0.0	0.00	0.00	0.0	4,625.00	0.0	0.0	0.0	0.00	0.00	0.00
100.0	0.00	0.00	100.0	4,525.00	0.0	0.0	0.0	0.00	0.00	0.00
200.0	0.00	0.00	200.0	4,425.00	0.0	0.0	0.0	0.00	0.00	0.00
300.0	0.00	0.00	300.0	4,325.00	0.0	0.0	0.0	0.00	0.00	0.00
400.0	0.00	0.00	400.0	4,225.00	0.0	0.0	0.0	0.00	0.00	0.00
500.0	0.00	0.00	500.0	4,125.00	0.0	0.0	0.0	0.00	0.00	0.00
600.0	0.00	0.00	600.0	4,025.00	0.0	0.0	0.0	0.00	0.00	0.00
700.0	0.00	0.00	700.0	3,925.00	0.0	0.0	0.0	0.00	0.00	0.00
800.0	0.00	0.00	800.0	3,825.00	0.0	0.0	0.0	0.00	0.00	0.00
900.0	0.00	0.00	900.0	3,725.00	0.0	0.0	0.0	0.00	0.00	0.00
1,000.0	0.00	0.00	1,000.0	3,625.00	0.0	0.0	0.0	0.00	0.00	0.00
1,100.0	0.00	0.00	1,100.0	3,525.00	0.0	0.0	0.0	0.00	0.00	0.00
1,200.0	0.00	0.00	1,200.0	3,425.00	0.0	0.0	0.0	0.00	0.00	0.00
1,300.0	0.00	0.00	1,300.0	3,325.00	0.0	0.0	0.0	0.00	0.00	0.00
1,400.0	0.00	0.00	1,400.0	3,225.00	0.0	0.0	0.0	0.00	0.00	0.00
SURFACE CASING										
1,500.0	0.00	0.00	1,500.0	3,125.00	0.0	0.0	0.0	0.00	0.00	0.00
1,600.0	0.00	0.00	1,600.0	3,025.00	0.0	0.0	0.0	0.00	0.00	0.00
START NUDGE (2°/100ft BUR)										
1,700.0	0.00	0.00	1,700.0	2,925.00	0.0	0.0	0.0	0.00	0.00	0.00
1,800.0	2.00	120.36	1,800.0	2,825.02	-0.9	1.5	-0.8	2.00	2.00	0.00
1,900.0	4.00	120.36	1,899.8	2,725.16	-3.5	6.0	-3.1	2.00	2.00	0.00
2,000.0	6.00	120.36	1,999.5	2,625.55	-7.9	13.5	-7.1	2.00	2.00	0.00
2,100.0	8.00	120.36	2,098.7	2,526.30	-14.1	24.1	-12.6	2.00	2.00	0.00
2,200.0	10.00	120.36	2,197.5	2,427.53	-22.0	37.6	-19.6	2.00	2.00	0.00
2,300.0	12.00	120.36	2,295.6	2,329.38	-31.6	54.0	-28.2	2.00	2.00	0.00
2,400.0	14.00	120.36	2,393.1	2,231.94	-43.0	73.4	-38.3	2.00	2.00	0.00
EOB TO 15.49° INC										
2,474.5	15.49	120.36	2,465.1	2,159.94	-52.6	89.8	-46.8	2.00	2.00	0.00
2,500.0	15.49	120.36	2,489.7	2,135.33	-56.0	95.7	-49.9	0.00	0.00	0.00
2,600.0	15.49	120.36	2,586.0	2,038.96	-69.5	118.7	-61.9	0.00	0.00	0.00
2,700.0	15.49	120.36	2,682.4	1,942.59	-83.0	141.8	-74.0	0.00	0.00	0.00
2,800.0	15.49	120.36	2,778.8	1,846.22	-96.5	164.8	-86.0	0.00	0.00	0.00
2,900.0	15.49	120.36	2,875.1	1,749.85	-110.0	187.8	-98.0	0.00	0.00	0.00
3,000.0	15.49	120.36	2,971.5	1,653.49	-123.5	210.9	-110.0	0.00	0.00	0.00
3,100.0	15.49	120.36	3,067.9	1,557.12	-137.0	233.9	-122.1	0.00	0.00	0.00
3,200.0	15.49	120.36	3,164.3	1,460.75	-150.5	257.0	-134.1	0.00	0.00	0.00
3,300.0	15.49	120.36	3,260.6	1,364.38	-164.0	280.0	-146.1	0.00	0.00	0.00
3,400.0	15.49	120.36	3,357.0	1,268.01	-177.5	303.1	-158.1	0.00	0.00	0.00
3,500.0	15.49	120.36	3,453.4	1,171.65	-191.0	326.1	-170.1	0.00	0.00	0.00
3,600.0	15.49	120.36	3,549.7	1,075.28	-204.5	349.1	-182.2	0.00	0.00	0.00
3,700.0	15.49	120.36	3,646.1	978.91	-218.0	372.2	-194.2	0.00	0.00	0.00
3,800.0	15.49	120.36	3,742.5	882.54	-231.5	395.2	-206.2	0.00	0.00	0.00
3,900.0	15.49	120.36	3,838.8	786.17	-245.0	418.3	-218.2	0.00	0.00	0.00
4,000.0	15.49	120.36	3,935.2	689.81	-258.5	441.3	-230.3	0.00	0.00	0.00
4,100.0	15.49	120.36	4,031.6	593.44	-272.0	464.4	-242.3	0.00	0.00	0.00
4,200.0	15.49	120.36	4,127.9	497.07	-285.5	487.4	-254.3	0.00	0.00	0.00
4,300.0	15.49	120.36	4,224.3	400.70	-299.0	510.4	-266.3	0.00	0.00	0.00
4,400.0	15.49	120.36	4,320.7	304.33	-312.5	533.5	-278.4	0.00	0.00	0.00
4,500.0	15.49	120.36	4,417.0	207.96	-326.0	556.5	-290.4	0.00	0.00	0.00
4,600.0	15.49	120.36	4,513.4	111.60	-339.5	579.6	-302.4	0.00	0.00	0.00
END OF TANGENT										
4,625.4	15.49	120.36	4,537.8	87.16	-342.9	585.4	-305.5	0.00	0.00	0.00

Database:	EDM 5000.1 Single User Db	Local Co-ordinate Reference:	Well PRONGHORN 24-8-5XRLNB
Company:	BONANZA CREEK ENERGY INC.	TVD Reference:	KB-EST @ 4625.0usft (Original Well Elev)
Project:	WELD COUNTY, COLORADO (NAD 83)	MD Reference:	KB-EST @ 4625.0usft (Original Well Elev)
Site:	SW SW SEC. 8 T5N R61W 6th P.M.	North Reference:	True
Well:	PRONGHORN 24-8-5XRLNB	Survey Calculation Method:	Minimum Curvature
Wellbore:	ORIGINAL WELLBORE		
Design:	PROPOSAL #1		

Planned Survey

MD (usft)	Inc (°)	Azi (°)	TVD (usft)	SS (usft)	+N/-S (usft)	+E/-W (usft)	Vertical Section (usft)	Dogleg Rate (°/100usft)	Build Rate (°/100usft)	Turn Rate (°/100usft)
4,700.0	14.00	120.36	4,610.0	14.98	-352.5	601.8	-314.0	2.00	-2.00	0.00
4,800.0	12.00	120.36	4,707.5	-82.46	-363.9	621.2	-324.1	2.00	-2.00	0.00
4,900.0	10.00	120.36	4,805.6	-180.62	-373.5	637.7	-332.7	2.00	-2.00	0.00
5,000.0	8.00	120.36	4,904.4	-279.38	-381.4	651.2	-339.8	2.00	-2.00	0.00
5,100.0	6.00	120.36	5,003.6	-378.63	-387.6	661.7	-345.2	2.00	-2.00	0.00
5,200.0	4.00	120.36	5,103.2	-478.25	-392.0	669.2	-349.2	2.00	-2.00	0.00
5,300.0	2.00	120.36	5,203.1	-578.10	-394.6	673.7	-351.5	2.00	-2.00	0.00
EOD TO VERTICAL										
5,399.8	0.00	0.00	5,302.9	-677.90	-395.5	675.2	-352.3	2.00	-2.00	0.00
5,400.0	0.00	0.00	5,303.1	-678.08	-395.5	675.2	-352.3	0.00	0.00	0.00
KOP (8°/100ft BUR)										
5,429.8	0.00	0.00	5,332.9	-707.90	-395.5	675.2	-352.3	0.00	0.00	0.00
5,500.0	5.61	359.65	5,403.0	-777.97	-392.1	675.2	-348.9	8.00	8.00	0.00
5,600.0	13.61	359.65	5,501.5	-876.49	-375.4	675.1	-332.2	8.00	8.00	0.00
5,700.0	21.61	359.65	5,596.7	-971.72	-345.1	674.9	-302.1	8.00	8.00	0.00
5,800.0	29.61	359.65	5,686.8	-1,061.82	-301.9	674.6	-259.0	8.00	8.00	0.00
5,900.0	37.61	359.65	5,770.0	-1,145.03	-246.6	674.3	-203.8	8.00	8.00	0.00
6,000.0	45.61	359.65	5,844.7	-1,219.73	-180.3	673.9	-137.6	8.00	8.00	0.00
6,100.0	53.61	359.65	5,909.5	-1,284.47	-104.2	673.4	-61.6	8.00	8.00	0.00
6,200.0	61.61	359.65	5,963.0	-1,337.99	-19.8	672.9	22.5	8.00	8.00	0.00
6,300.0	69.61	359.65	6,004.2	-1,379.24	71.2	672.3	113.3	8.00	8.00	0.00
START OF TANGENT										
6,367.3	75.00	359.65	6,024.7	-1,399.69	135.3	672.0	177.3	8.00	8.00	0.00
6,400.0	75.00	359.65	6,033.2	-1,408.15	166.9	671.8	208.8	0.00	0.00	0.00
END OF TANGENT										
6,467.3	75.00	359.65	6,050.6	-1,425.58	231.9	671.4	273.6	0.00	0.00	0.00
6,500.0	77.61	359.65	6,058.3	-1,433.31	263.7	671.2	305.3	8.00	8.00	0.00
6,600.0	85.61	359.65	6,072.9	-1,447.88	362.5	670.6	403.9	8.00	8.00	0.00
HZ LP *NEW*: 827.8ft FSL & 2005.2ft FWL of Sec 8										
6,654.8	90.00	359.65	6,075.0	-1,449.98	417.3	670.2	458.6	8.00	8.00	0.00
6,700.0	90.00	359.65	6,075.0	-1,449.98	462.5	670.0	503.6	0.00	0.00	0.00
6,800.0	90.00	359.65	6,075.0	-1,449.98	562.5	669.3	603.4	0.00	0.00	0.00
6,900.0	90.00	359.65	6,075.0	-1,449.98	662.5	668.7	703.2	0.00	0.00	0.00
7,000.0	90.00	359.65	6,075.0	-1,449.98	762.5	668.1	802.9	0.00	0.00	0.00
7,100.0	90.00	359.65	6,075.0	-1,449.98	862.4	667.5	902.7	0.00	0.00	0.00
7,200.0	90.00	359.65	6,075.0	-1,449.98	962.4	666.9	1,002.4	0.00	0.00	0.00
7,300.0	90.00	359.65	6,075.0	-1,449.98	1,062.4	666.3	1,102.2	0.00	0.00	0.00
7,400.0	90.00	359.65	6,075.0	-1,449.98	1,162.4	665.7	1,202.0	0.00	0.00	0.00
7,500.0	90.00	359.65	6,075.0	-1,449.98	1,262.4	665.1	1,301.7	0.00	0.00	0.00
7,600.0	90.00	359.65	6,075.0	-1,449.98	1,362.4	664.5	1,401.5	0.00	0.00	0.00
7,700.0	90.00	359.65	6,075.0	-1,449.98	1,462.4	663.9	1,501.3	0.00	0.00	0.00
7,800.0	90.00	359.65	6,075.0	-1,449.98	1,562.4	663.3	1,601.0	0.00	0.00	0.00
7,900.0	90.00	359.65	6,075.0	-1,449.98	1,662.4	662.6	1,700.8	0.00	0.00	0.00
8,000.0	90.00	359.65	6,075.0	-1,449.98	1,762.4	662.0	1,800.5	0.00	0.00	0.00
8,100.0	90.00	359.65	6,075.0	-1,449.98	1,862.4	661.4	1,900.3	0.00	0.00	0.00
8,200.0	90.00	359.65	6,075.0	-1,449.98	1,962.4	660.8	2,000.1	0.00	0.00	0.00
8,300.0	90.00	359.65	6,075.0	-1,449.98	2,062.4	660.2	2,099.8	0.00	0.00	0.00
8,400.0	90.00	359.65	6,075.0	-1,449.98	2,162.4	659.6	2,199.6	0.00	0.00	0.00
8,500.0	90.00	359.65	6,075.0	-1,449.98	2,262.4	659.0	2,299.4	0.00	0.00	0.00
8,600.0	90.00	359.65	6,075.0	-1,449.98	2,362.4	658.4	2,399.1	0.00	0.00	0.00
8,700.0	90.00	359.65	6,075.0	-1,449.98	2,462.4	657.8	2,498.9	0.00	0.00	0.00
8,800.0	90.00	359.65	6,075.0	-1,449.98	2,562.4	657.2	2,598.6	0.00	0.00	0.00
8,900.0	90.00	359.65	6,075.0	-1,449.98	2,662.4	656.6	2,698.4	0.00	0.00	0.00

Database:	EDM 5000.1 Single User Db	Local Co-ordinate Reference:	Well PRONGHORN 24-8-5XRLNB
Company:	BONANZA CREEK ENERGY INC.	TVD Reference:	KB-EST @ 4625.0usft (Original Well Elev)
Project:	WELD COUNTY, COLORADO (NAD 83)	MD Reference:	KB-EST @ 4625.0usft (Original Well Elev)
Site:	SW SW SEC. 8 T5N R61W 6th P.M.	North Reference:	True
Well:	PRONGHORN 24-8-5XRLNB	Survey Calculation Method:	Minimum Curvature
Wellbore:	ORIGINAL WELLBORE		
Design:	PROPOSAL #1		

Planned Survey										
MD (usft)	Inc (°)	Azi (°)	TVD (usft)	SS (usft)	+N/-S (usft)	+E/-W (usft)	Vertical Section (usft)	Dogleg Rate (°/100usft)	Build Rate (°/100usft)	Turn Rate (°/100usft)
9,000.0	90.00	359.65	6,075.0	-1,449.99	2,762.4	656.0	2,798.2	0.00	0.00	0.00
9,100.0	90.00	359.65	6,075.0	-1,449.99	2,862.4	655.4	2,897.9	0.00	0.00	0.00
9,200.0	90.00	359.65	6,075.0	-1,449.99	2,962.4	654.8	2,997.7	0.00	0.00	0.00
9,300.0	90.00	359.65	6,075.0	-1,449.99	3,062.4	654.2	3,097.5	0.00	0.00	0.00
9,400.0	90.00	359.65	6,075.0	-1,449.99	3,162.4	653.6	3,197.2	0.00	0.00	0.00
9,500.0	90.00	359.65	6,075.0	-1,449.99	3,262.4	652.9	3,297.0	0.00	0.00	0.00
9,600.0	90.00	359.65	6,075.0	-1,449.99	3,362.4	652.3	3,396.7	0.00	0.00	0.00
9,700.0	90.00	359.65	6,075.0	-1,449.99	3,462.4	651.7	3,496.5	0.00	0.00	0.00
9,800.0	90.00	359.65	6,075.0	-1,449.99	3,562.4	651.1	3,596.3	0.00	0.00	0.00
9,900.0	90.00	359.65	6,075.0	-1,449.99	3,662.4	650.5	3,696.0	0.00	0.00	0.00
10,000.0	90.00	359.65	6,075.0	-1,449.99	3,762.4	649.9	3,795.8	0.00	0.00	0.00
10,100.0	90.00	359.65	6,075.0	-1,449.99	3,862.4	649.3	3,895.6	0.00	0.00	0.00
10,200.0	90.00	359.65	6,075.0	-1,449.99	3,962.4	648.7	3,995.3	0.00	0.00	0.00
10,300.0	90.00	359.65	6,075.0	-1,449.99	4,062.4	648.1	4,095.1	0.00	0.00	0.00
10,400.0	90.00	359.65	6,075.0	-1,449.99	4,162.4	647.5	4,194.8	0.00	0.00	0.00
10,500.0	90.00	359.65	6,075.0	-1,450.00	4,262.4	646.9	4,294.6	0.00	0.00	0.00
10,600.0	90.00	359.66	6,075.0	-1,450.00	4,362.4	646.3	4,394.4	0.00	0.00	0.00
10,700.0	90.00	359.66	6,075.0	-1,450.00	4,462.4	645.7	4,494.1	0.00	0.00	0.00
10,800.0	90.00	359.66	6,075.0	-1,450.00	4,562.4	645.1	4,593.9	0.00	0.00	0.00
10,900.0	90.00	359.66	6,075.0	-1,450.00	4,662.4	644.5	4,693.7	0.00	0.00	0.00
11,000.0	90.00	359.66	6,075.0	-1,450.00	4,762.4	643.9	4,793.4	0.00	0.00	0.00
MID-LAT TGT @ 1983ft FWL										
11,062.5	90.00	359.66	6,075.0	-1,450.00	4,824.9	643.5	4,855.8	0.00	0.00	0.00
EOT TO 359.59° AZ										
11,064.7	90.00	359.59	6,075.0	-1,450.00	4,827.1	643.5	4,857.9	3.00	0.00	-3.00
11,100.0	90.00	359.59	6,075.0	-1,450.00	4,862.4	643.3	4,893.2	0.00	0.00	0.00
11,200.0	90.00	359.59	6,075.0	-1,450.00	4,962.4	642.5	4,992.9	0.00	0.00	0.00
11,300.0	90.00	359.59	6,075.0	-1,450.00	5,062.4	641.8	5,092.7	0.00	0.00	0.00
11,400.0	90.00	359.59	6,075.0	-1,450.00	5,162.4	641.1	5,192.4	0.00	0.00	0.00
11,500.0	90.00	359.59	6,075.0	-1,450.00	5,262.4	640.4	5,292.2	0.00	0.00	0.00
11,600.0	90.00	359.59	6,075.0	-1,450.00	5,362.4	639.7	5,392.0	0.00	0.00	0.00
11,700.0	90.00	359.59	6,075.0	-1,450.01	5,462.4	639.0	5,491.7	0.00	0.00	0.00
11,800.0	90.00	359.59	6,075.0	-1,450.01	5,562.4	638.2	5,591.5	0.00	0.00	0.00
11,900.0	90.00	359.59	6,075.0	-1,450.01	5,662.4	637.5	5,691.2	0.00	0.00	0.00
12,000.0	90.00	359.59	6,075.0	-1,450.01	5,762.4	636.8	5,791.0	0.00	0.00	0.00
12,100.0	90.00	359.59	6,075.0	-1,450.01	5,862.4	636.1	5,890.7	0.00	0.00	0.00
12,200.0	90.00	359.59	6,075.0	-1,450.01	5,962.3	635.4	5,990.5	0.00	0.00	0.00
12,300.0	90.00	359.59	6,075.0	-1,450.01	6,062.3	634.6	6,090.2	0.00	0.00	0.00
12,400.0	90.00	359.59	6,075.0	-1,450.01	6,162.3	633.9	6,190.0	0.00	0.00	0.00
12,500.0	90.00	359.59	6,075.0	-1,450.01	6,262.3	633.2	6,289.8	0.00	0.00	0.00
12,600.0	90.00	359.59	6,075.0	-1,450.01	6,362.3	632.5	6,389.5	0.00	0.00	0.00
12,700.0	90.00	359.59	6,075.0	-1,450.01	6,462.3	631.8	6,489.3	0.00	0.00	0.00
12,800.0	90.00	359.59	6,075.0	-1,450.01	6,562.3	631.0	6,589.0	0.00	0.00	0.00
12,900.0	90.00	359.59	6,075.0	-1,450.01	6,662.3	630.3	6,688.8	0.00	0.00	0.00
13,000.0	90.00	359.59	6,075.0	-1,450.01	6,762.3	629.6	6,788.5	0.00	0.00	0.00
13,100.0	90.00	359.59	6,075.0	-1,450.01	6,862.3	628.9	6,888.3	0.00	0.00	0.00
13,200.0	90.00	359.59	6,075.0	-1,450.01	6,962.3	628.1	6,988.0	0.00	0.00	0.00
13,300.0	90.00	359.59	6,075.0	-1,450.01	7,062.3	627.4	7,087.8	0.00	0.00	0.00
13,400.0	90.00	359.58	6,075.0	-1,450.01	7,162.3	626.7	7,187.5	0.00	0.00	0.00
13,500.0	90.00	359.58	6,075.0	-1,450.01	7,262.3	626.0	7,287.3	0.00	0.00	0.00
13,600.0	90.00	359.58	6,075.0	-1,450.01	7,362.3	625.2	7,387.0	0.00	0.00	0.00
13,700.0	90.00	359.58	6,075.0	-1,450.01	7,462.3	624.5	7,486.8	0.00	0.00	0.00
13,800.0	90.00	359.58	6,075.0	-1,450.01	7,562.3	623.8	7,586.6	0.00	0.00	0.00
13,900.0	90.00	359.58	6,075.0	-1,450.01	7,662.3	623.1	7,686.3	0.00	0.00	0.00

Database:	EDM 5000.1 Single User Db	Local Co-ordinate Reference:	Well PRONGHORN 24-8-5XRLNB
Company:	BONANZA CREEK ENERGY INC.	TVD Reference:	KB-EST @ 4625.0usft (Original Well Elev)
Project:	WELD COUNTY, COLORADO (NAD 83)	MD Reference:	KB-EST @ 4625.0usft (Original Well Elev)
Site:	SW SW SEC. 8 T5N R61W 6th P.M.	North Reference:	True
Well:	PRONGHORN 24-8-5XRLNB	Survey Calculation Method:	Minimum Curvature
Wellbore:	ORIGINAL WELLBORE		
Design:	PROPOSAL #1		

Planned Survey

MD (usft)	Inc (°)	Azi (°)	TVD (usft)	SS (usft)	+N/-S (usft)	+E/-W (usft)	Vertical Section (usft)	Dogleg Rate (°/100usft)	Build Rate (°/100usft)	Turn Rate (°/100usft)
14,000.0	90.00	359.58	6,075.0	-1,450.01	7,762.3	622.3	7,786.1	0.00	0.00	0.00
14,100.0	90.00	359.58	6,075.0	-1,450.01	7,862.3	621.6	7,885.8	0.00	0.00	0.00
14,200.0	90.00	359.58	6,075.0	-1,450.01	7,962.3	620.9	7,985.6	0.00	0.00	0.00
14,300.0	90.00	359.58	6,075.0	-1,450.01	8,062.3	620.2	8,085.3	0.00	0.00	0.00
14,400.0	90.00	359.58	6,075.0	-1,450.01	8,162.3	619.4	8,185.1	0.00	0.00	0.00
14,500.0	90.00	359.58	6,075.0	-1,450.01	8,262.3	618.7	8,284.8	0.00	0.00	0.00
14,600.0	90.00	359.58	6,075.0	-1,450.01	8,362.3	618.0	8,384.6	0.00	0.00	0.00
14,700.0	90.00	359.58	6,075.0	-1,450.01	8,462.3	617.2	8,484.3	0.00	0.00	0.00
14,800.0	90.00	359.58	6,075.0	-1,450.01	8,562.3	616.5	8,584.1	0.00	0.00	0.00
14,900.0	90.00	359.58	6,075.0	-1,450.01	8,662.3	615.8	8,683.9	0.00	0.00	0.00
15,000.0	90.00	359.58	6,075.0	-1,450.01	8,762.3	615.1	8,783.6	0.00	0.00	0.00
15,100.0	90.00	359.58	6,075.0	-1,450.01	8,862.3	614.3	8,883.4	0.00	0.00	0.00
15,200.0	90.00	359.58	6,075.0	-1,450.01	8,962.3	613.6	8,983.1	0.00	0.00	0.00
15,300.0	90.00	359.58	6,075.0	-1,450.00	9,062.3	612.9	9,082.9	0.00	0.00	0.00
15,400.0	90.00	359.58	6,075.0	-1,450.00	9,162.3	612.1	9,182.6	0.00	0.00	0.00
15,500.0	90.00	359.58	6,075.0	-1,450.00	9,262.3	611.4	9,282.4	0.00	0.00	0.00
15,600.0	90.00	359.58	6,075.0	-1,450.00	9,362.3	610.7	9,382.1	0.00	0.00	0.00
15,700.0	90.00	359.58	6,075.0	-1,450.00	9,462.3	609.9	9,481.9	0.00	0.00	0.00
15,800.0	90.00	359.58	6,075.0	-1,450.00	9,562.3	609.2	9,581.6	0.00	0.00	0.00
15,900.0	90.00	359.58	6,075.0	-1,450.00	9,662.2	608.5	9,681.4	0.00	0.00	0.00
BHL: 470ft FNL & 1976ft FWL of Sec 5										
15,902.6	90.00	359.58	6,075.0	-1,450.00	9,664.8	608.4	9,684.0	0.00	0.00	0.00

Plan Annotations

MD (usft)	TVD (usft)	Local Coordinates		Comment
		+N/-S (usft)	+E/-W (usft)	
0.0	0.0	0.0	0.0	SHL: 407ft FSL & 1335ft FWL of Sec 8
1,500.0	1,500.0	0.0	0.0	SURFACE CASING
1,700.0	1,700.0	0.0	0.0	START NUDGE (2°/100ft BUR)
2,474.5	2,465.1	-52.6	89.8	EOB TO 15.49° INC
4,625.4	4,537.8	-342.9	585.4	END OF TANGENT
5,399.8	5,302.9	-395.5	675.2	EOD TO VERTICAL
5,429.8	5,332.9	-395.5	675.2	KOP (8°/100ft BUR)
6,367.3	6,024.7	135.3	672.0	START OF TANGENT
6,467.3	6,050.6	231.9	671.4	END OF TANGENT
6,654.8	6,075.0	417.3	670.2	HZ LP *NEW*: 827.8ft FSL & 2005.2ft FWL of Sec 8
11,062.5	6,075.0	4,824.9	643.5	MID-LAT TGT @ 1983ft FWL
11,064.7	6,075.0	4,827.1	643.5	EOT TO 359.59° AZ
15,902.6	6,075.0	9,664.8	608.4	BHL: 470ft FNL & 1976ft FWL of Sec 5