

NOTE: UNDER COLORADO LAW, YOU MUST COMMENCE ANY LEGAL ACTION BASED ON ANY DEFECT IN THIS CERTIFICATE WITHIN THREE YEARS AFTER DEFECT IS DISCOVERED. IN NO EVENT MAY ANY ACTION BASED UPON ANY DEFECT IN THIS SURVEY BE COMMENCED MORE THAN TEN YEARS AFTER DATE OF THIS CERTIFICATE SHOWN HEREON. (13-80105 C.R.S.)

## NOTES:

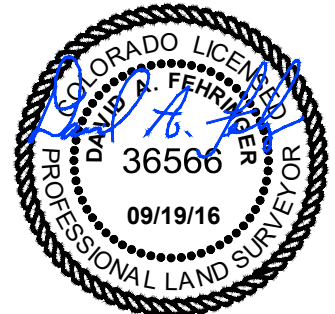
- ALL BEARINGS ARE GRID BASED UPON THE COLORADO STATE PLANE COORDINATE SYSTEM, NORTH ZONE, NAD83(2011) DERIVED FROM POST-PROCESSED STATIC GPS OBSERVATIONS.
- DISTANCES ARE ON GRID
- VERTICAL DATUM IS NAVD88 BASED UPON GPS OBSERVATIONS
- PDOP VALUE EQUALS 1.5.
- GPS OPERATOR: MARC MAYER
- GROUND ELEVATION AT WELLHEAD = 4563.7'
- ALL SECTION LENGTHS ARE MEASURED DISTANCES UNLESS NOTED BY (R), RECORD BEARING AND DISTANCE.
- NEAREST CULTURAL DISTANCES  
BUILDINGS: 5280' +  
BUILDING UNIT: 5280' +  
HIGH OCCUPANCY BUILDING UNIT: 5280' +  
DESIGNATED OUTSIDE ACTIVITY AREA: 5280' +  
PUBLIC ROAD: 215' +  
ABOVE GROUND UTILITY: 356' +/-  
RAILROAD: 5280' +  
PROPERTY LINE: 228' +/-

5	NAD 83		STATE PLANE COORDINATES	
U-Y-18HNB	LATITUDE	LONGITUDE	NORTHING	EASTING
SURFACE	40.4091542	-104.2466883	1394361.63	3349001.55
TARGET 1	40.4070786	-104.2429141	1393620.45	3350063.16
BOTTOM HOLE	40.3951197	-104.2428895	1389264.40	3350131.77

PAD CORNERS	NAD 83	
PHT-7 PAD	LATITUDE	LONGITUDE
NW	40.4100313	-104.2478213
NE	40.4100066	-104.2455594
SE	40.4087017	-104.2454759
SW	40.4087273	-104.2478456

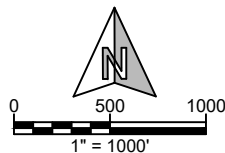
## CERTIFICATE OF SURVEYOR:

I, DAVID A. FEHRINGER OF LANDER, WYOMING HEREBY CERTIFY THAT THIS WELL LOCATION CERTIFICATE WAS PREPARED FROM NOTES TAKEN DURING AN ACTUAL SURVEY ON SEPTEMBER 07, 2016; AND THAT IT CORRECTLY SHOWS THE DRILLING LOCATION OF BONANZA CREEK ENERGY, INC. PRONGHORN U-Y-18HNB AS STAKED DURING SAID SURVEY. THIS MAP DOES NOT REPRESENT A BOUNDARY SURVEY OR AN IMPROVEMENT LOCATION PLAT AND SHOULD NOT BE USED FOR THE ESTABLISHMENT OF BOUNDARY LINES.



**WILLIAM H. SMITH & ASSOCIATES, Inc.**  
155 N. 1st Street  
Lander, WY 82520  
Phone: 307-335-5646

Drawn By: MAM  
Job No.: 15043  
Checked By: DAF  
Date: 09/19/16  
Revision:



IF BAR LENGTH DOES NOT EQUAL 1"(ONE INCH), THIS PAGE WAS NOT PLOTTED TO THE INTENDED SCALE.

## LOCATION CERTIFICATE

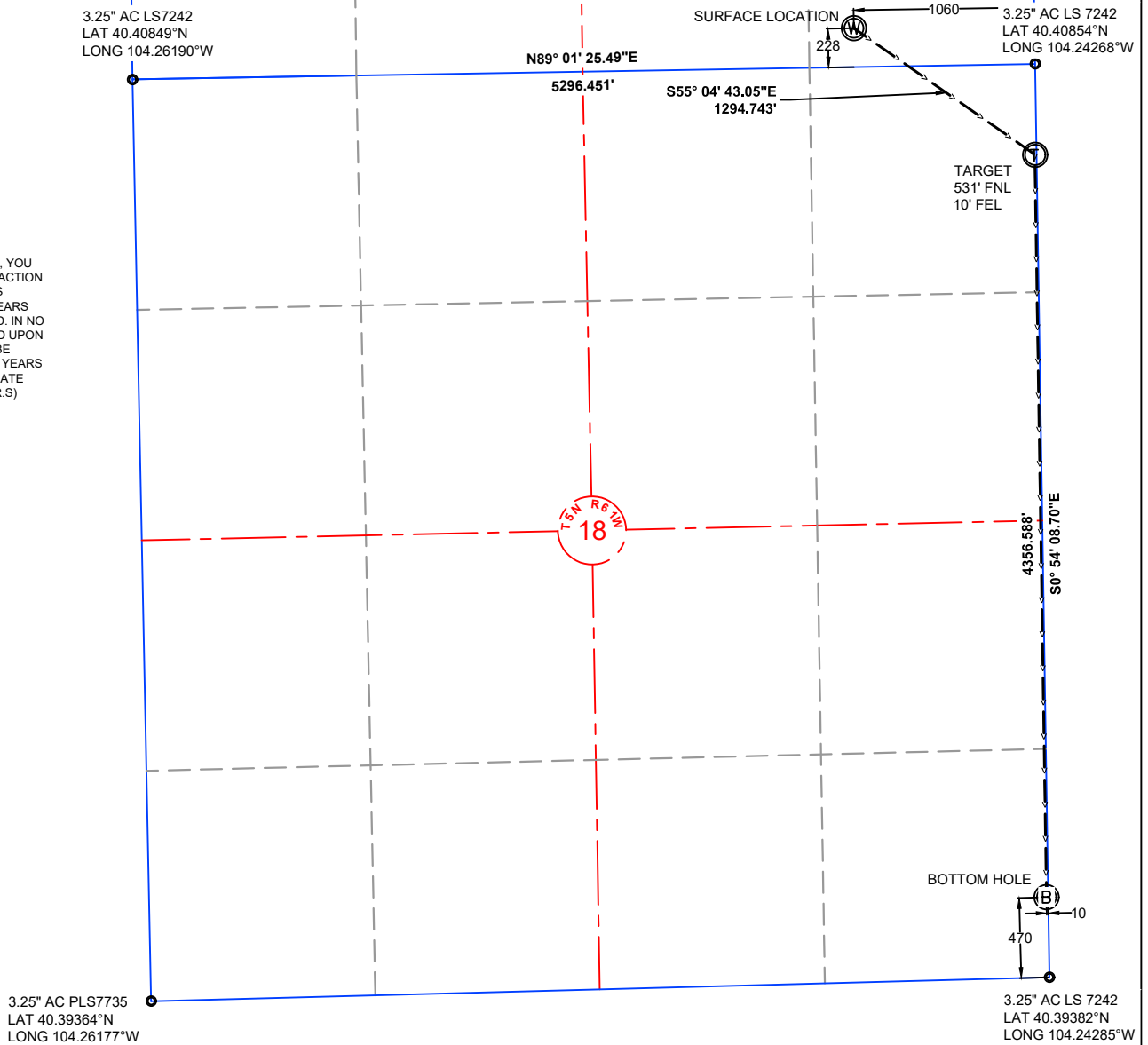
**PRONGHORN  
U-Y-18HNB  
SURFACE**  
SE¼ SE¼, SECTION 7,  
T.5N., R.61W., 6th PM  
WELD COUNTY, COLORADO



410 17th Street  
Denver, CO 80202  
(720) 440-6100

SHEET  
1  
OF  
2

NOTE: UNDER COLORADO LAW, YOU MUST COMMENCE ANY LEGAL ACTION BASED ON ANY DEFECT IN THIS CERTIFICATE WITHIN THREE YEARS AFTER DEFECT IS DISCOVERED. IN NO EVENT MAY ANY ACTION BASED UPON ANY DEFECT IN THIS SURVEY BE COMMENCED MORE THAN TEN YEARS AFTER DATE OF THIS CERTIFICATE SHOWN HEREON. (13-80105 C.R.S.)



#### NOTES:

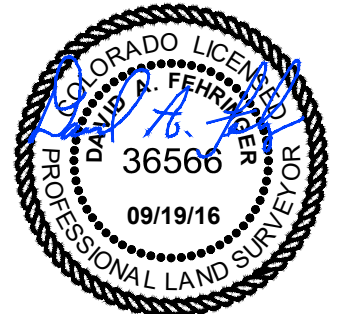
- ALL BEARINGS ARE GRID BASED UPON THE COLORADO STATE PLANE COORDINATE SYSTEM, NORTH ZONE, NAD83(2011) DERIVED FROM POST-PROCESSED STATIC GPS OBSERVATIONS.
- DISTANCES ARE ON GRID
- VERTICAL DATUM IS NAVD88 BASED UPON GPS OBSERVATIONS
- PDOP VALUE EQUALS 1.5.
- GPS OPERATOR: MARC MAYER
- GROUND ELEVATION AT WELLHEAD = 4563.7'
- ALL SECTION LENGTHS ARE MEASURED DISTANCES UNLESS NOTED BY (R), RECORD BEARING AND DISTANCE.
- NEAREST CULTURAL DISTANCES  
BUILDINGS: 5280' +  
BUILDING UNIT: 5280' +  
HIGH OCCUPANCY BUILDING UNIT: 5280' +  
DESIGNATED OUTSIDE ACTIVITY AREA: 5280' +  
PUBLIC ROAD: 215' +  
ABOVE GROUND UTILITY: 356' +/-  
RAILROAD: 5280' +  
PROPERTY LINE: 228' +/-

5	NAD 83		STATE PLANE COORDINATES	
U-Y-18HNB	LATITUDE	LONGITUDE	NORTHING	EASTING
SURFACE	40.4091542	-104.2466883	1394361.63	3349001.55
TARGET 1	40.4070786	-104.2429141	1393620.45	3350063.16
BOTTOM HOLE	40.3951197	-104.2428895	1389264.40	3350131.77

PAD CORNERS	NAD 83	
PHT-7 PAD	LATITUDE	LONGITUDE
NW	40.4100313	-104.2478213
NE	40.4100066	-104.2455594
SE	40.4087017	-104.2454759
SW	40.4087273	-104.2478456

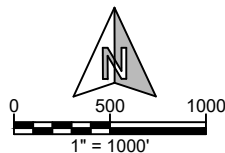
#### CERTIFICATE OF SURVEYOR:

I, DAVID A. FEHRINGER OF LANDER, WYOMING HEREBY CERTIFY THAT THIS WELL LOCATION CERTIFICATE WAS PREPARED FROM NOTES TAKEN DURING AN ACTUAL SURVEY ON SEPTEMBER 07, 2016; AND THAT IT CORRECTLY SHOWS THE DRILLING LOCATION OF BONANZA CREEK ENERGY, INC. PRONGHORN U-Y-18HNB AS STAKED DURING SAID SURVEY. THIS MAP DOES NOT REPRESENT A BOUNDARY SURVEY OR AN IMPROVEMENT LOCATION PLAT AND SHOULD NOT BE USED FOR THE ESTABLISHMENT OF BOUNDARY LINES.



**WILLIAM H. SMITH & ASSOCIATES, Inc.**  
155 N. 1st Street  
Lander, WY 82520  
Phone: 307-335-5646

Drawn By: MAM  
Job No.: 15043  
Revision:  
Checked By: DAF  
Date: 09/19/16



IF BAR LENGTH DOES NOT EQUAL 1"(ONE INCH), THIS PAGE WAS NOT PLOTTED TO THE INTENDED SCALE.

#### LOCATION CERTIFICATE

**PRONGHORN  
U-Y-18HNB  
BOTTOM HOLE**  
SE¼ SE¼, SECTION 18,  
T.5N., R.61W., 6th PM  
WELD COUNTY, COLORADO



410 17th Street  
Denver, CO 80202  
(720) 440-6100

SHEET  
2  
OF  
2