

SYNERGY RESOURCES CORPORATION

Location: COLORADO Slot: SLOT#17 GOETZEL 12N-30B-M (2237'FSL & 2053'FWL, SEC.29)
Field: WELD COUNTY (NAD83,TRUE NORTH) Well: GOETZEL 12N-30B-M
Facility: SEC.29-T06N-R66W Wellbore: GOETZEL 12N-30B-M PWB

Plot reference wellpath is GOETZEL 12N-30B-M REV-A.0 PWP

True vertical depths are referenced to PRECISION 562 (25) (RKB)	* = Wellpath was transformed from a different geodetic datum
Measured depths are referenced to PRECISION 562 (25) (RKB)	North Reference: True north
PRECISION 562 (25) (RKB) to Mean Sea Level: 4757 feet	Scale: True distance
Mean Sea Level to Mud line (At Slot: SLOT#17 GOETZEL 12N-30B-M (2237'FSL & 2053'FWL, SEC.29)): 0 feet	Depths are in feet
Coordinates are in feet referenced to Slot	Created by: wagnjam on 2017-02-27
	Database: WA_DEN_Denver_Deln

Location Information

Facility Name			Grid East (US ft)	Grid North (US ft)	Latitude	Longitude
SEC.29-T06N-R66W			3194449.646	1411672.008	40°27'40.817"N	104°48'04.259"W
Slot	Local N (ft)	Local E (ft)	Grid East (US ft)	Grid North (US ft)	Latitude	Longitude
SLOT#17 GOETZEL 12N-30B-M (2237'FSL & 2053'FWL, SEC.29)	-1262.34	-822.02	3193637.633	1410403.277	40°27'28.343"N	104°48'14.893"W
PRECISION 562 (25) (RKB) to Mud line (At Slot: SLOT#17 GOETZEL 12N-30B-M (2237'FSL & 2053'FWL, SEC.29))					4757ft	
Mean Sea Level to Mud line (At Slot: SLOT#17 GOETZEL 12N-30B-M (2237'FSL & 2053'FWL, SEC.29))					0ft	
PRECISION 562 (25) (RKB) to Mean Sea Level					4757ft	

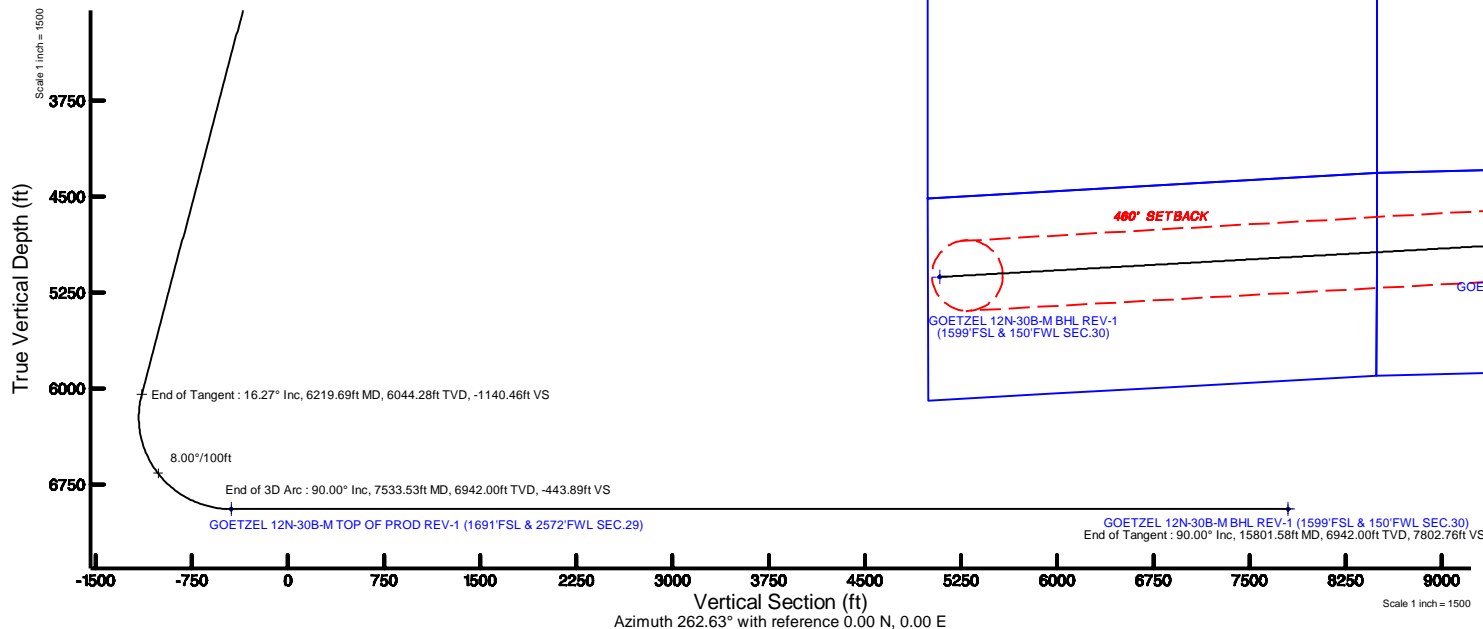
Tie-On Position

MD (ft)	Inc (°)	Az (°)	TVD (ft)	Local N (ft)	Local E (ft)	Grid East (US ft)	Grid North (US ft)	Latitude	Longitude
25.00	0.000	108.302	25.00	0.00	0.00	3193637.63	1410403.28	40°27'28.343"N	104°48'14.893"W



BGGM (1900.0 to 2018.0) Dip: 66.92° Field: 52499.6 nT
Magnetic North is 8.43 degrees East of True North (at 2/22/2017)

To correct azimuth from Magnetic to True add 8.43 degrees



Well Profile Data

Design Comment	MD (ft)	Inc (°)	Az (°)	TVD (ft)	Local N (ft)	Local E (ft)	DLS (°/100ft)	VS (ft)
Tie On	25.00	0.000	108.302	25.00	0.00	0.00	0.00	0.00
End of Tangent	1300.00	0.000	108.302	1300.00	0.00	0.00	0.00	0.00
End of Build	2113.68	16.274	108.302	2102.78	-36.04	108.97	2.00	-103.45
End of Tangent	6219.69	16.274	108.302	6044.28	-397.37	1201.37	0.00	-1140.46
End of 3D Arc	7533.53	90.000	266.752	6942.00	-532.64	516.49	8.00	-443.89
End of Tangent	15801.58	90.000	266.752	6942.00	-1001.04	-7738.28	0.00	7802.76

Survey Program

Start MD (ft)	End MD (ft)	Tool	Model	Log Name/Comment	Wellbore
25.00	1700.00	BHI NewTrak	Custom BHI NewTrak (Standard Rotating-Axial Corr) (Rockies 0.03Gr model)		GOETZEL 12N-30B-M PWB
1700.00	15801.58	BHI AutoTrak Curve	Custom BHI AutoTrak Curve (IFR1, Short) (Rockies 0.03Gr model)		GOETZEL 12N-30B-M PWB

Targets

Name	MD (ft)	TVD (ft)	Local N (ft)	Local E (ft)	Grid East (US ft)	Grid North (US ft)	Latitude	Longitude
SEC.29-T06N-R66W-NORTHERN	9.00	1262.35	821.99	3194449.66	1411671.99	40°27'40.817"N	104°48'04.259"W	
SEC.29-T06N-R66W-SOUTHERN	9.00	1262.35	821.99	3194449.66	1411671.99	40°27'40.817"N	104°48'04.259"W	
SEC.30-T06N-R66W-NORTHERN	9.00	1262.35	821.99	3194449.66	1411671.99	40°27'40.817"N	104°48'04.259"W	
SEC.30-T06N-R66W-SOUTHERN	9.00	1262.35	821.99	3194449.66	1411671.99	40°27'40.817"N	104°48'04.259"W	
GOETZEL 12N-30B-M-BHL ON PLAT (1599FSL & 510FWL SEC.30)	6942.00	-981.11	-7378.44	3196267.41	1409364.33	40°27'18.637"N	104°49'50.340"W	
GOETZEL 12N-30B-M-BHL REV-1 (1599FSL & 150FWL SEC.30)	15801.58	6942.00	-1001.04	-7738.28	3185907.75	1409341.59	40°27'18.439"N	104°49'54.996"W
GOETZEL 12N-30B-M TOP OF PROD REV-1 (1691FSL & 2572FWL SEC.29)	7533.53	6942.00	-532.64	516.49	3194158.27	40°27'23.087"N	104°48'08.212"W	

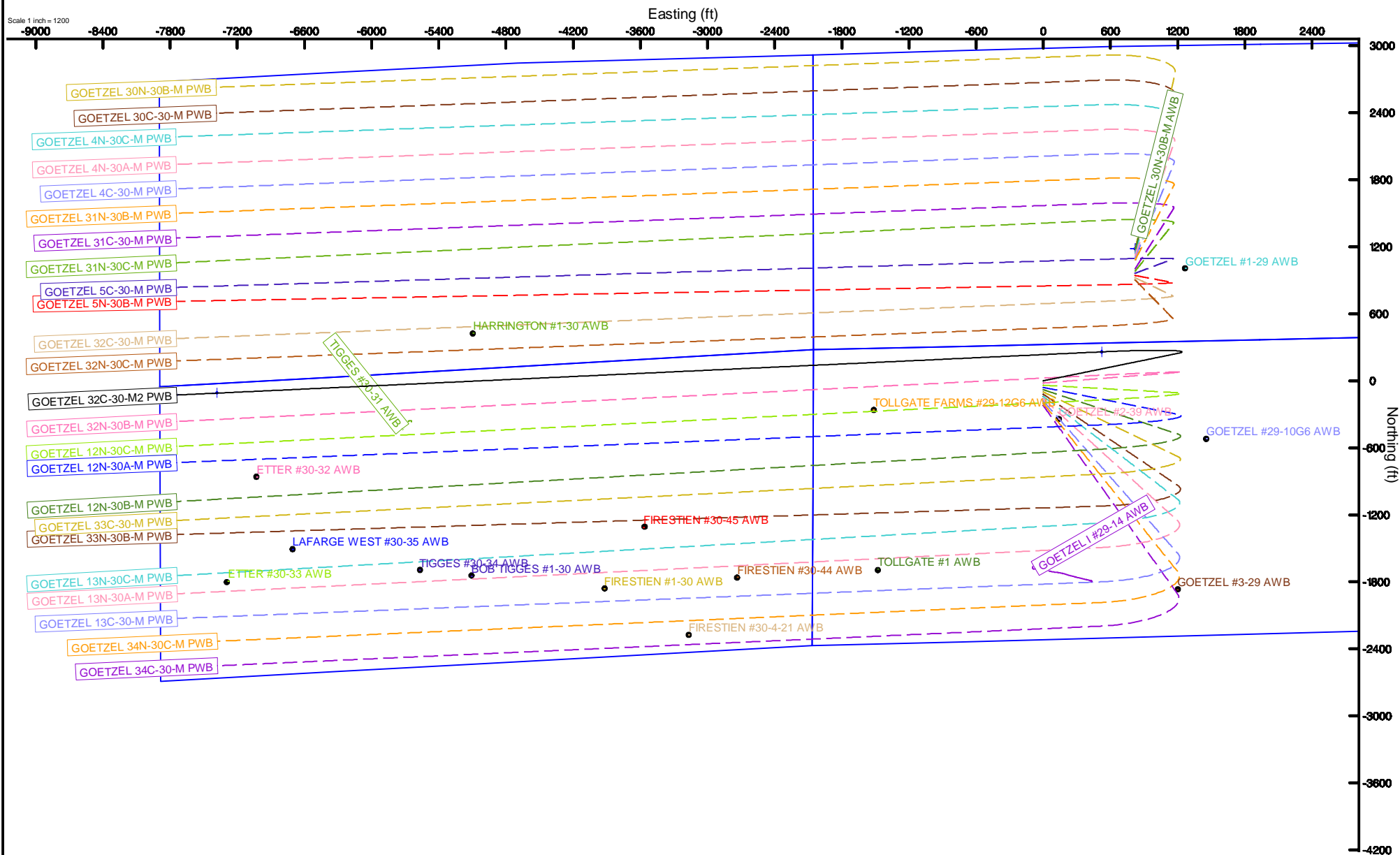
SYNERGY RESOURCES CORPORATION

Location: COLORADO Slot: SLOT#13 GOETZEL 32C-30-M2 (2317FSL & 2053FWL SEC.29)
Field: WELD COUNTY (NAD83, TRUE NORTH) Well: GOETZEL 32C-30-M2
Facility: SEC.29-T06N-R66W Wellbore: GOETZEL 32C-30-M2 PWB



BGGM (1900.0 to 2018.0) Dip: 66.92° Field: 52499.6 nT
Magnetic North is 8.43 degrees East of True North (at 2/22/2017)

To correct azimuth from Magnetic to True add 8.43 degrees



GOETZEL_12N-30B-M_REV-A.0_PWP.1as

~VERSION INFORMATION

VERS. 2.0 : CWLS LOG ASCII STANDARD-VERSION 2.0

WRAP. NO : ASCII DATA SECTION CONTAINS ONE ROW PER WELLPATH STATION

~WELL INFORMATION

#MNEM	.UNITS	DATA	:DESCRIPTION
#----	.-----	----	:-----
STRT	.ft	0.00	:START MD
STOP	.ft	15801.58	:STOP MD
STEP	.ft	0.0	:STEP (non-uniform increment)
NULL	.	-999.99	:NULL
COMP	.	SYNERGY RESOURCES CORPORATION	:OPERATOR
WELL	.	GOETZEL 12N-30B-M	:WELL
FLD	.	WELD COUNTY (NAD83,TRUE NORTH)	:FIELD
LOC	.	COLORADO	:AREA (aka: Location)
CNTY	.	N/A	:COUNTY
STAT	.	N/A	:STATE
CTRY	.	N/A	:COUNTRY
SRVC	.	Baker Hughes	:CONTRACTOR
DATE	.	02/22/2017	:LOG REV DATE
API	.		:API NUMBER

~OTHER INFORMATION

#Software: WellArchitect(R) Version 5.0

#MNEM	.UNITS	DATA	:DESCRIPTION
#----	.-----	----	:-----
WPTYPE	.	PLANNED WELLPATH	:WELLPATH TYPE
FACILITY	.	SEC.29-T06N-R66W	:FACILITY
SLOT	.	SLOT#17 GOETZEL 12N-30B-M (2237'FSL & 2053'FWL, SEC.29):SLOT	:SLOT
WELLBORE	.	GOETZEL 12N-30B-M PWB	:WELLBORE
WELLPATH	.	GOETZEL 12N-30B-M REV-A.0 PWP	:WELLPATH
MDREFPT	.	PRECISION 562 (25') (RKB)	:MD REFERENCE POINT
TVDREFPT	.	PRECISION 562 (25') (RKB)	:TVD REFERENCE POINT
LCLREFPT	.	slot	:LOCAL COORDINATE REFERENCE PT
VSAZIMUTH.deg		262.63	:VERTICAL SECTION AZIMUTH
VSORIGN .ft		0.00	:VERTICAL SECTION ORIGIN NORTH
VSORIGE .ft		0.00	:VERTICAL SECTION ORIGIN EAST

~CURVE (WELLPATH) INFORMATION

#MNEM	.UNITS	:DESCRIPTION
#----	.-----	:-----
DEPT	.ft	:MEASURED DEPTH
INC	.deg	:INCLINATION
AZI	.deg	:AZIMUTH

GOETZEL_12N-30B-M_REV-A.0_PWP.1as

TVD .ft :TRUE VERTICAL DEPTH
 SECT .ft :CROSS SECTION (CURTAIN/VERTICAL)
 LOCALN .ft :LOCAL NORTH
 LOCALE .ft :LOCAL EAST
 LAT .deg :LATITUDE
 LONG .deg :LONGITUDE
 DLS .deg/100ft :DOGLEG SEVERITY

~ASCII DATA

0.00	0.00	108.30	0.00	0.00	0.00	0.00	40.4578731	-104.8041369	0.00
25.00	0.00	108.30	25.00	0.00	0.00	0.00	40.4578731	-104.8041369	0.00
125.00	0.00	108.30	125.00	0.00	0.00	0.00	40.4578731	-104.8041369	0.00
225.00	0.00	108.30	225.00	0.00	0.00	0.00	40.4578731	-104.8041369	0.00
325.00	0.00	108.30	325.00	0.00	0.00	0.00	40.4578731	-104.8041369	0.00
425.00	0.00	108.30	425.00	0.00	0.00	0.00	40.4578731	-104.8041369	0.00
525.00	0.00	108.30	525.00	0.00	0.00	0.00	40.4578731	-104.8041369	0.00
625.00	0.00	108.30	625.00	0.00	0.00	0.00	40.4578731	-104.8041369	0.00
725.00	0.00	108.30	725.00	0.00	0.00	0.00	40.4578731	-104.8041369	0.00
825.00	0.00	108.30	825.00	0.00	0.00	0.00	40.4578731	-104.8041369	0.00
925.00	0.00	108.30	925.00	0.00	0.00	0.00	40.4578731	-104.8041369	0.00
1025.00	0.00	108.30	1025.00	0.00	0.00	0.00	40.4578731	-104.8041369	0.00
1125.00	0.00	108.30	1125.00	0.00	0.00	0.00	40.4578731	-104.8041369	0.00
1225.00	0.00	108.30	1225.00	0.00	0.00	0.00	40.4578731	-104.8041369	0.00
1300.00	0.00	108.30	1300.00	0.00	0.00	0.00	40.4578731	-104.8041369	0.00
1325.00	0.50	108.30	1325.00	-0.10	-0.03	0.10	40.4578730	-104.8041366	2.00
1425.00	2.50	108.30	1424.96	-2.46	-0.86	2.59	40.4578707	-104.8041276	2.00
1525.00	4.50	108.30	1524.77	-7.96	-2.77	8.38	40.4578654	-104.8041068	2.00
1625.00	6.50	108.30	1624.30	-16.60	-5.78	17.48	40.4578572	-104.8040741	2.00
1725.00	8.50	108.30	1723.44	-28.36	-9.88	29.88	40.4578459	-104.8040296	2.00
1825.00	10.50	108.30	1822.07	-43.24	-15.06	45.54	40.4578317	-104.8039733	2.00
1925.00	12.50	108.30	1920.05	-61.20	-21.32	64.47	40.4578145	-104.8039053	2.00
2025.00	14.50	108.30	2017.29	-82.24	-28.66	86.63	40.4577944	-104.8038256	2.00
2113.68	16.27	108.30	2102.78	-103.45	-36.04	108.97	40.4577741	-104.8037454	2.00
2125.00	16.27	108.30	2113.65	-106.31	-37.04	111.98	40.4577714	-104.8037345	0.00
2225.00	16.27	108.30	2209.64	-131.56	-45.84	138.59	40.4577472	-104.8036389	0.00
2325.00	16.27	108.30	2305.64	-156.82	-54.64	165.19	40.4577231	-104.8035433	0.00
2425.00	16.27	108.30	2401.63	-182.08	-63.44	191.80	40.4576989	-104.8034477	0.00
2525.00	16.27	108.30	2497.62	-207.33	-72.24	218.40	40.4576748	-104.8033521	0.00
2625.00	16.27	108.30	2593.62	-232.59	-81.04	245.01	40.4576506	-104.8032565	0.00
2725.00	16.27	108.30	2689.61	-257.84	-89.84	271.61	40.4576265	-104.8031609	0.00
2825.00	16.27	108.30	2785.60	-283.10	-98.64	298.22	40.4576023	-104.8030653	0.00
2925.00	16.27	108.30	2881.60	-308.36	-107.44	324.82	40.4575781	-104.8029697	0.00
3025.00	16.27	108.30	2977.59	-333.61	-116.24	351.43	40.4575540	-104.8028741	0.00
3125.00	16.27	108.30	3073.58	-358.87	-125.04	378.03	40.4575298	-104.8027785	0.00

GOETZEL_12N-30B-M_REV-A.0_PWP.1as

3225.00	16.27	108.30	3169.58	-384.12	-133.84	404.64	40.4575057	-104.8026829	0.00
3325.00	16.27	108.30	3265.57	-409.38	-142.64	431.24	40.4574815	-104.8025873	0.00
3425.00	16.27	108.30	3361.57	-434.64	-151.44	457.85	40.4574574	-104.8024917	0.00
3525.00	16.27	108.30	3457.56	-459.89	-160.24	484.45	40.4574332	-104.8023961	0.00
3625.00	16.27	108.30	3553.55	-485.15	-169.04	511.06	40.4574091	-104.8023005	0.00
3725.00	16.27	108.30	3649.55	-510.40	-177.84	537.66	40.4573849	-104.8022049	0.00
3825.00	16.27	108.30	3745.54	-535.66	-186.64	564.27	40.4573607	-104.8021093	0.00
3925.00	16.27	108.30	3841.53	-560.92	-195.44	590.87	40.4573366	-104.8020137	0.00
4025.00	16.27	108.30	3937.53	-586.17	-204.24	617.48	40.4573124	-104.8019181	0.00
4125.00	16.27	108.30	4033.52	-611.43	-213.04	644.08	40.4572883	-104.8018225	0.00
4225.00	16.27	108.30	4129.51	-636.68	-221.84	670.69	40.4572641	-104.8017269	0.00
4325.00	16.27	108.30	4225.51	-661.94	-230.64	697.29	40.4572400	-104.8016313	0.00
4425.00	16.27	108.30	4321.50	-687.20	-239.44	723.90	40.4572158	-104.8015357	0.00
4525.00	16.27	108.30	4417.49	-712.45	-248.24	750.50	40.4571916	-104.8014401	0.00
4625.00	16.27	108.30	4513.49	-737.71	-257.04	777.11	40.4571675	-104.8013445	0.00
4725.00	16.27	108.30	4609.48	-762.96	-265.84	803.71	40.4571433	-104.8012489	0.00
4825.00	16.27	108.30	4705.47	-788.22	-274.64	830.32	40.4571192	-104.8011533	0.00
4925.00	16.27	108.30	4801.47	-813.48	-283.44	856.92	40.4570950	-104.8010577	0.00
5025.00	16.27	108.30	4897.46	-838.73	-292.24	883.52	40.4570709	-104.8009621	0.00
5125.00	16.27	108.30	4993.45	-863.99	-301.04	910.13	40.4570467	-104.8008665	0.00
5225.00	16.27	108.30	5089.45	-889.24	-309.84	936.73	40.4570225	-104.8007709	0.00
5325.00	16.27	108.30	5185.44	-914.50	-318.64	963.34	40.4569984	-104.8006753	0.00
5425.00	16.27	108.30	5281.43	-939.76	-327.44	989.94	40.4569742	-104.8005797	0.00
5525.00	16.27	108.30	5377.43	-965.01	-336.24	1016.55	40.4569501	-104.8004841	0.00
5625.00	16.27	108.30	5473.42	-990.27	-345.04	1043.15	40.4569259	-104.8003885	0.00
5725.00	16.27	108.30	5569.41	-1015.52	-353.84	1069.76	40.4569018	-104.8002929	0.00
5825.00	16.27	108.30	5665.41	-1040.78	-362.64	1096.36	40.4568776	-104.8001973	0.00
5925.00	16.27	108.30	5761.40	-1066.04	-371.44	1122.97	40.4568534	-104.8001017	0.00
6025.00	16.27	108.30	5857.40	-1091.29	-380.24	1149.57	40.4568293	-104.8000061	0.00
6125.00	16.27	108.30	5953.39	-1116.55	-389.04	1176.18	40.4568051	-104.7999105	0.00
6219.69	16.27	108.30	6044.28	-1140.46	-397.37	1201.37	40.4567822	-104.7998199	0.00
6225.00	15.88	108.89	6049.39	-1141.78	-397.84	1202.76	40.4567810	-104.7998149	8.00
6325.00	9.05	129.05	6147.01	-1159.51	-407.24	1221.85	40.4567551	-104.7997464	8.00
6425.00	6.26	188.92	6246.26	-1163.41	-417.60	1227.12	40.4567267	-104.7997274	8.00
6525.00	11.13	233.74	6345.18	-1153.41	-428.71	1218.48	40.4566962	-104.7997585	8.00
6625.00	18.34	247.88	6441.85	-1129.71	-440.37	1196.09	40.4566642	-104.7998389	8.00
6725.00	26.00	254.05	6534.41	-1092.76	-452.33	1160.38	40.4566314	-104.7999672	8.00
6825.00	33.81	257.54	6621.03	-1043.30	-464.38	1112.06	40.4565983	-104.8001409	8.00
6925.00	41.69	259.84	6700.04	-982.27	-476.27	1052.07	40.4565657	-104.8003565	8.00
7025.00	49.60	261.52	6769.90	-910.87	-487.77	981.56	40.4565341	-104.8006098	8.00
7125.00	57.53	262.84	6829.25	-830.49	-498.67	901.92	40.4565042	-104.8008960	8.00
7225.00	65.47	263.95	6876.94	-742.69	-508.74	814.69	40.4564766	-104.8012094	8.00
7325.00	73.42	264.92	6912.03	-649.19	-517.79	721.58	40.4564518	-104.8015440	8.00
7425.00	81.37	265.82	6933.84	-551.79	-525.65	624.39	40.4564302	-104.8018933	8.00

GOETZEL_12N-30B-M_REV-A.0_PWP.1as									
7525.00	89.32	266.68	6941.95	-452.40	-532.16	525.01	40.4564123	-104.8022504	8.00
7533.53	90.00	266.75	6942.00	-443.89	-532.64	516.49	40.4564110	-104.8022810	8.00
7625.00	90.00	266.75	6942.00	-352.66	-537.83	425.17	40.4563968	-104.8026091	0.00
7725.00	90.00	266.75	6942.00	-252.92	-543.49	325.33	40.4563812	-104.8029679	0.00
7825.00	90.00	266.75	6942.00	-153.18	-549.16	225.49	40.4563657	-104.8033267	0.00
7925.00	90.00	266.75	6942.00	-53.43	-554.82	125.65	40.4563501	-104.8036854	0.00
8025.00	90.00	266.75	6942.00	46.31	-560.49	25.81	40.4563346	-104.8040442	0.00
8125.00	90.00	266.75	6942.00	146.05	-566.15	-74.03	40.4563190	-104.8044029	0.00
8225.00	90.00	266.75	6942.00	245.79	-571.82	-173.87	40.4563035	-104.8047617	0.00
8325.00	90.00	266.75	6942.00	345.53	-577.48	-273.70	40.4562879	-104.8051205	0.00
8425.00	90.00	266.75	6942.00	445.27	-583.15	-373.54	40.4562724	-104.8054792	0.00
8525.00	90.00	266.75	6942.00	545.01	-588.81	-473.38	40.4562568	-104.8058380	0.00
8625.00	90.00	266.75	6942.00	644.75	-594.48	-573.22	40.4562413	-104.8061967	0.00
8725.00	90.00	266.75	6942.00	744.49	-600.14	-673.06	40.4562257	-104.8065555	0.00
8825.00	90.00	266.75	6942.00	844.24	-605.81	-772.90	40.4562102	-104.8069143	0.00
8925.00	90.00	266.75	6942.00	943.98	-611.47	-872.74	40.4561946	-104.8072730	0.00
9025.00	90.00	266.75	6942.00	1043.72	-617.14	-972.58	40.4561790	-104.8076318	0.00
9125.00	90.00	266.75	6942.00	1143.46	-622.80	-1072.42	40.4561635	-104.8079905	0.00
9225.00	90.00	266.75	6942.00	1243.20	-628.47	-1172.26	40.4561479	-104.8083493	0.00
9325.00	90.00	266.75	6942.00	1342.94	-634.13	-1272.10	40.4561324	-104.8087081	0.00
9425.00	90.00	266.75	6942.00	1442.68	-639.80	-1371.94	40.4561168	-104.8090668	0.00
9525.00	90.00	266.75	6942.00	1542.42	-645.46	-1471.78	40.4561012	-104.8094256	0.00
9625.00	90.00	266.75	6942.00	1642.16	-651.13	-1571.62	40.4560857	-104.8097843	0.00
9725.00	90.00	266.75	6942.00	1741.91	-656.79	-1671.46	40.4560701	-104.8101431	0.00
9825.00	90.00	266.75	6942.00	1841.65	-662.46	-1771.30	40.4560545	-104.8105019	0.00
9925.00	90.00	266.75	6942.00	1941.39	-668.12	-1871.14	40.4560389	-104.8108606	0.00
10025.00	90.00	266.75	6942.00	2041.13	-673.79	-1970.97	40.4560234	-104.8112194	0.00
10125.00	90.00	266.75	6942.00	2140.87	-679.45	-2070.81	40.4560078	-104.8115781	0.00
10225.00	90.00	266.75	6942.00	2240.61	-685.12	-2170.65	40.4559922	-104.8119369	0.00
10325.00	90.00	266.75	6942.00	2340.35	-690.78	-2270.49	40.4559767	-104.8122956	0.00
10425.00	90.00	266.75	6942.00	2440.09	-696.45	-2370.33	40.4559611	-104.8126544	0.00
10525.00	90.00	266.75	6942.00	2539.84	-702.11	-2470.17	40.4559455	-104.8130132	0.00
10625.00	90.00	266.75	6942.00	2639.58	-707.78	-2570.01	40.4559299	-104.8133719	0.00
10725.00	90.00	266.75	6942.00	2739.32	-713.44	-2669.85	40.4559143	-104.8137307	0.00
10825.00	90.00	266.75	6942.00	2839.06	-719.11	-2769.69	40.4558988	-104.8140894	0.00
10925.00	90.00	266.75	6942.00	2938.80	-724.78	-2869.53	40.4558832	-104.8144482	0.00
11025.00	90.00	266.75	6942.00	3038.54	-730.44	-2969.37	40.4558676	-104.8148069	0.00
11125.00	90.00	266.75	6942.00	3138.28	-736.11	-3069.21	40.4558520	-104.8151657	0.00
11225.00	90.00	266.75	6942.00	3238.02	-741.77	-3169.05	40.4558364	-104.8155244	0.00
11325.00	90.00	266.75	6942.00	3337.76	-747.44	-3268.89	40.4558208	-104.8158832	0.00
11425.00	90.00	266.75	6942.00	3437.51	-753.10	-3368.73	40.4558053	-104.8162420	0.00
11525.00	90.00	266.75	6942.00	3537.25	-758.77	-3468.57	40.4557897	-104.8166007	0.00
11625.00	90.00	266.75	6942.00	3636.99	-764.43	-3568.41	40.4557741	-104.8169595	0.00
11725.00	90.00	266.75	6942.00	3736.73	-770.10	-3668.24	40.4557585	-104.8173182	0.00

GOETZEL_12N-30B-M_REV-A.0_PWP.1as									
11825.00	90.00	266.75	6942.00	3836.47	-775.76	-3768.08	40.4557429	-104.8176770	0.00
11925.00	90.00	266.75	6942.00	3936.21	-781.43	-3867.92	40.4557273	-104.8180357	0.00
12025.00	90.00	266.75	6942.00	4035.95	-787.09	-3967.76	40.4557117	-104.8183945	0.00
12125.00	90.00	266.75	6942.00	4135.69	-792.76	-4067.60	40.4556961	-104.8187532	0.00
12225.00	90.00	266.75	6942.00	4235.44	-798.42	-4167.44	40.4556805	-104.8191120	0.00
12325.00	90.00	266.75	6942.00	4335.18	-804.09	-4267.28	40.4556649	-104.8194707	0.00
12425.00	90.00	266.75	6942.00	4434.92	-809.75	-4367.12	40.4556493	-104.8198295	0.00
12525.00	90.00	266.75	6942.00	4534.66	-815.42	-4466.96	40.4556337	-104.8201883	0.00
12625.00	90.00	266.75	6942.00	4634.40	-821.08	-4566.80	40.4556181	-104.8205470	0.00
12725.00	90.00	266.75	6942.00	4734.14	-826.75	-4666.64	40.4556025	-104.8209058	0.00
12825.00	90.00	266.75	6942.00	4833.88	-832.41	-4766.48	40.4555869	-104.8212645	0.00
12925.00	90.00	266.75	6942.00	4933.62	-838.08	-4866.32	40.4555713	-104.8216233	0.00
13025.00	90.00	266.75	6942.00	5033.36	-843.74	-4966.16	40.4555557	-104.8219820	0.00
13125.00	90.00	266.75	6942.00	5133.11	-849.41	-5066.00	40.4555401	-104.8223408	0.00
13225.00	90.00	266.75	6942.00	5232.85	-855.07	-5165.84	40.4555245	-104.8226995	0.00
13325.00	90.00	266.75	6942.00	5332.59	-860.74	-5265.67	40.4555089	-104.8230583	0.00
13425.00	90.00	266.75	6942.00	5432.33	-866.40	-5365.51	40.4554933	-104.8234170	0.00
13525.00	90.00	266.75	6942.00	5532.07	-872.07	-5465.35	40.4554777	-104.8237758	0.00
13625.00	90.00	266.75	6942.00	5631.81	-877.73	-5565.19	40.4554621	-104.8241345	0.00
13725.00	90.00	266.75	6942.00	5731.55	-883.40	-5665.03	40.4554465	-104.8244933	0.00
13825.00	90.00	266.75	6942.00	5831.29	-889.06	-5764.87	40.4554308	-104.8248520	0.00
13925.00	90.00	266.75	6942.00	5931.03	-894.73	-5864.71	40.4554152	-104.8252108	0.00
14025.00	90.00	266.75	6942.00	6030.78	-900.39	-5964.55	40.4553996	-104.8255695	0.00
14125.00	90.00	266.75	6942.00	6130.52	-906.06	-6064.39	40.4553840	-104.8259283	0.00
14225.00	90.00	266.75	6942.00	6230.26	-911.72	-6164.23	40.4553684	-104.8262870	0.00
14325.00	90.00	266.75	6942.00	6330.00	-917.39	-6264.07	40.4553528	-104.8266458	0.00
14425.00	90.00	266.75	6942.00	6429.74	-923.05	-6363.91	40.4553371	-104.8270045	0.00
14525.00	90.00	266.75	6942.00	6529.48	-928.72	-6463.75	40.4553215	-104.8273633	0.00
14625.00	90.00	266.75	6942.00	6629.22	-934.38	-6563.59	40.4553059	-104.8277220	0.00
14725.00	90.00	266.75	6942.00	6728.96	-940.05	-6663.43	40.4552903	-104.8280808	0.00
14825.00	90.00	266.75	6942.00	6828.71	-945.71	-6763.27	40.4552746	-104.8284395	0.00
14925.00	90.00	266.75	6942.00	6928.45	-951.38	-6863.11	40.4552590	-104.8287983	0.00
15025.00	90.00	266.75	6942.00	7028.19	-957.05	-6962.94	40.4552434	-104.8291570	0.00
15125.00	90.00	266.75	6942.00	7127.93	-962.71	-7062.78	40.4552278	-104.8295158	0.00
15225.00	90.00	266.75	6942.00	7227.67	-968.38	-7162.62	40.4552121	-104.8298745	0.00
15325.00	90.00	266.75	6942.00	7327.41	-974.04	-7262.46	40.4551965	-104.8302333	0.00
15425.00	90.00	266.75	6942.00	7427.15	-979.71	-7362.30	40.4551809	-104.8305920	0.00
15525.00	90.00	266.75	6942.00	7526.89	-985.37	-7462.14	40.4551652	-104.8309508	0.00
15625.00	90.00	266.75	6942.00	7626.63	-991.04	-7561.98	40.4551496	-104.8313095	0.00
15725.00	90.00	266.75	6942.00	7726.38	-996.70	-7661.82	40.4551340	-104.8316683	0.00
15801.58	90.00	266.75	6942.00	7802.76	-1001.04	-7738.28	40.4551220	-104.8319430	0.00



Planned Wellpath Report

GOETZEL 12N-30B-M REV-A.0 PWP

Page 1 of 8



REFERENCE WELLPATH IDENTIFICATION

Operator	SYNERGY RESOURCES CORPORATION	Slot	SLOT#17 GOETZEL 12N-30B-M (2237'FSL & 2053'FWL, SEC.29)
Area	COLORADO	Well	GOETZEL 12N-30B-M
Field	WELD COUNTY (NAD83,TRUE NORTH)	Wellbore	GOETZEL 12N-30B-M PWB
Facility	SEC.29-T06N-R66W		

REPORT SETUP INFORMATION

Projection System	NAD83 / Lambert Colorado SP, Northern Zone (501), US feet	Software System	WellArchitect® 5.0
North Reference	True	User	Wagnjam
Scale	0.999963	Report Generated	2/27/2017 at 5:33:51 PM
Convergence at slot	0.45° East	Database/Source file	WA_DEN_Denver_Defn/GOETZEL_12N-30B-M_REV-A.0_PWP.xml

WELLPATH LOCATION

	Local coordinates		Grid coordinates		Geographic coordinates	
	North[ft]	East[ft]	Easting[US ft]	Northing[US ft]	Latitude	Longitude
Slot Location	-1262.34	-822.02	3193637.63	1410403.28	40°27'28.343"N	104°48'14.893"W
Facility Reference Pt			3194449.65	1411672.01	40°27'40.817"N	104°48'04.259"W
Field Reference Pt			3171284.48	1426358.81	40°30'07.643"N	104°53'02.634"W

WELLPATH DATUM

Calculation method	Minimum curvature	PRECISION 562 (25') (RKB) to Facility Vertical Datum	4757.00ft
Horizontal Reference Pt	Slot	PRECISION 562 (25') (RKB) to Mean Sea Level	4757.00ft
Vertical Reference Pt	PRECISION 562 (25') (RKB)	PRECISION 562 (25') (RKB) to Mud Line at Slot (SLOT#17 GOETZEL 12N-30B-M (2237'FSL & 2053'FWL, SEC.29))	4757.00ft
MD Reference Pt	PRECISION 562 (25') (RKB)	Section Origin	N 0.00, E 0.00 ft
Field Vertical Reference	Mean Sea Level	Section Azimuth	262.63°



Planned Wellpath Report

GOETZEL 12N-30B-M REV-A.0 PWP

Page 2 of 8



REFERENCE WELLPATH IDENTIFICATION

Operator	SYNERGY RESOURCES CORPORATION	Slot	SLOT#17 GOETZEL 12N-30B-M (2237'FSL & 2053'FWL, SEC.29)
Area	COLORADO	Well	GOETZEL 12N-30B-M
Field	WELD COUNTY (NAD83,TRUE NORTH)	Wellbore	GOETZEL 12N-30B-M PWB
Facility	SEC.29-T06N-R66W		

WELLPATH DATA (164 stations) † = interpolated/extrapolated station

MD [ft]	Inclination [°]	Azimuth [°]	TVD [ft]	Vert Sect [ft]	North [ft]	East [ft]	DLS [°/100ft]	Comments
0.00†	0.000	108.302	0.00	0.00	0.00	0.00	0.00	
25.00	0.000	108.302	25.00	0.00	0.00	0.00	0.00	Tie On
125.00†	0.000	108.302	125.00	0.00	0.00	0.00	0.00	
225.00†	0.000	108.302	225.00	0.00	0.00	0.00	0.00	
325.00†	0.000	108.302	325.00	0.00	0.00	0.00	0.00	
425.00†	0.000	108.302	425.00	0.00	0.00	0.00	0.00	
525.00†	0.000	108.302	525.00	0.00	0.00	0.00	0.00	
625.00†	0.000	108.302	625.00	0.00	0.00	0.00	0.00	
725.00†	0.000	108.302	725.00	0.00	0.00	0.00	0.00	
825.00†	0.000	108.302	825.00	0.00	0.00	0.00	0.00	
925.00†	0.000	108.302	925.00	0.00	0.00	0.00	0.00	
1025.00†	0.000	108.302	1025.00	0.00	0.00	0.00	0.00	
1125.00†	0.000	108.302	1125.00	0.00	0.00	0.00	0.00	
1225.00†	0.000	108.302	1225.00	0.00	0.00	0.00	0.00	
1300.00	0.000	108.302	1300.00	0.00	0.00	0.00	0.00	End of Tangent
1325.00†	0.500	108.302	1325.00	-0.10	-0.03	0.10	2.00	
1425.00†	2.500	108.302	1424.96	-2.46	-0.86	2.59	2.00	
1525.00†	4.500	108.302	1524.77	-7.96	-2.77	8.38	2.00	
1625.00†	6.500	108.302	1624.30	-16.60	-5.78	17.48	2.00	
1725.00†	8.500	108.302	1723.44	-28.36	-9.88	29.88	2.00	
1825.00†	10.500	108.302	1822.07	-43.24	-15.06	45.54	2.00	
1925.00†	12.500	108.302	1920.05	-61.20	-21.32	64.47	2.00	
2025.00†	14.500	108.302	2017.29	-82.24	-28.66	86.63	2.00	
2113.68	16.274	108.302	2102.78	-103.45	-36.04	108.97	2.00	End of Build
2125.00†	16.274	108.302	2113.65	-106.31	-37.04	111.98	0.00	
2225.00†	16.274	108.302	2209.64	-131.56	-45.84	138.59	0.00	
2325.00†	16.274	108.302	2305.64	-156.82	-54.64	165.19	0.00	
2425.00†	16.274	108.302	2401.63	-182.08	-63.44	191.80	0.00	
2525.00†	16.274	108.302	2497.62	-207.33	-72.24	218.40	0.00	
2625.00†	16.274	108.302	2593.62	-232.59	-81.04	245.01	0.00	



Planned Wellpath Report

GOETZEL 12N-30B-M REV-A.0 PWP

Page 3 of 8



REFERENCE WELLPATH IDENTIFICATION

Operator	SYNERGY RESOURCES CORPORATION	Slot	SLOT#17 GOETZEL 12N-30B-M (2237'FSL & 2053'FWL, SEC.29)
Area	COLORADO	Well	GOETZEL 12N-30B-M
Field	WELD COUNTY (NAD83,TRUE NORTH)	Wellbore	GOETZEL 12N-30B-M PWB
Facility	SEC.29-T06N-R66W		

WELLPATH DATA (164 stations) † = interpolated/extrapolated station

MD [ft]	Inclination [°]	Azimuth [°]	TVD [ft]	Vert Sect [ft]	North [ft]	East [ft]	DLS [°/100ft]	Comments
2725.00†	16.274	108.302	2689.61	-257.84	-89.84	271.61	0.00	
2825.00†	16.274	108.302	2785.60	-283.10	-98.64	298.22	0.00	
2925.00†	16.274	108.302	2881.60	-308.36	-107.44	324.82	0.00	
3025.00†	16.274	108.302	2977.59	-333.61	-116.24	351.43	0.00	
3125.00†	16.274	108.302	3073.58	-358.87	-125.04	378.03	0.00	
3225.00†	16.274	108.302	3169.58	-384.12	-133.84	404.64	0.00	
3325.00†	16.274	108.302	3265.57	-409.38	-142.64	431.24	0.00	
3425.00†	16.274	108.302	3361.57	-434.64	-151.44	457.85	0.00	
3525.00†	16.274	108.302	3457.56	-459.89	-160.24	484.45	0.00	
3625.00†	16.274	108.302	3553.55	-485.15	-169.04	511.06	0.00	
3725.00†	16.274	108.302	3649.55	-510.40	-177.84	537.66	0.00	
3825.00†	16.274	108.302	3745.54	-535.66	-186.64	564.27	0.00	
3925.00†	16.274	108.302	3841.53	-560.92	-195.44	590.87	0.00	
4025.00†	16.274	108.302	3937.53	-586.17	-204.24	617.48	0.00	
4125.00†	16.274	108.302	4033.52	-611.43	-213.04	644.08	0.00	
4225.00†	16.274	108.302	4129.51	-636.68	-221.84	670.69	0.00	
4325.00†	16.274	108.302	4225.51	-661.94	-230.64	697.29	0.00	
4425.00†	16.274	108.302	4321.50	-687.20	-239.44	723.90	0.00	
4525.00†	16.274	108.302	4417.49	-712.45	-248.24	750.50	0.00	
4625.00†	16.274	108.302	4513.49	-737.71	-257.04	777.11	0.00	
4725.00†	16.274	108.302	4609.48	-762.96	-265.84	803.71	0.00	
4825.00†	16.274	108.302	4705.47	-788.22	-274.64	830.32	0.00	
4925.00†	16.274	108.302	4801.47	-813.48	-283.44	856.92	0.00	
5025.00†	16.274	108.302	4897.46	-838.73	-292.24	883.52	0.00	
5125.00†	16.274	108.302	4993.45	-863.99	-301.04	910.13	0.00	
5225.00†	16.274	108.302	5089.45	-889.24	-309.84	936.73	0.00	
5325.00†	16.274	108.302	5185.44	-914.50	-318.64	963.34	0.00	
5425.00†	16.274	108.302	5281.43	-939.76	-327.44	989.94	0.00	
5525.00†	16.274	108.302	5377.43	-965.01	-336.24	1016.55	0.00	
5625.00†	16.274	108.302	5473.42	-990.27	-345.04	1043.15	0.00	



Planned Wellpath Report

GOETZEL 12N-30B-M REV-A.0 PWP

Page 4 of 8



REFERENCE WELLPATH IDENTIFICATION

Operator	SYNERGY RESOURCES CORPORATION	Slot	SLOT#17 GOETZEL 12N-30B-M (2237'FSL & 2053'FWL, SEC.29)
Area	COLORADO	Well	GOETZEL 12N-30B-M
Field	WELD COUNTY (NAD83,TRUE NORTH)	Wellbore	GOETZEL 12N-30B-M PWB
Facility	SEC.29-T06N-R66W		

WELLPATH DATA (164 stations) † = interpolated/extrapolated station

MD [ft]	Inclination [°]	Azimuth [°]	TVD [ft]	Vert Sect [ft]	North [ft]	East [ft]	DLS [°/100ft]	Comments
5725.00†	16.274	108.302	5569.41	-1015.52	-353.84	1069.76	0.00	
5825.00†	16.274	108.302	5665.41	-1040.78	-362.64	1096.36	0.00	
5925.00†	16.274	108.302	5761.40	-1066.04	-371.44	1122.97	0.00	
6025.00†	16.274	108.302	5857.40	-1091.29	-380.24	1149.57	0.00	
6125.00†	16.274	108.302	5953.39	-1116.55	-389.04	1176.18	0.00	
6219.69	16.274	108.302	6044.28	-1140.46	-397.37	1201.37	0.00	End of Tangent
6225.00†	15.881	108.893	6049.39	-1141.78	-397.84	1202.76	8.00	
6325.00†	9.052	129.052	6147.01	-1159.51	-407.24	1221.85	8.00	
6425.00†	6.260	188.923	6246.26	-1163.41	-417.60	1227.12	8.00	
6525.00†	11.133	233.735	6345.18	-1153.41	-428.71	1218.48	8.00	
6625.00†	18.336	247.875	6441.85	-1129.71	-440.37	1196.09	8.00	
6725.00†	25.999	254.052	6534.41	-1092.76	-452.33	1160.38	8.00	
6825.00†	33.811	257.539	6621.03	-1043.30	-464.38	1112.06	8.00	
6925.00†	41.687	259.837	6700.04	-982.27	-476.27	1052.07	8.00	
7025.00†	49.597	261.516	6769.90	-910.87	-487.77	981.56	8.00	
7125.00†	57.527	262.839	6829.25	-830.49	-498.67	901.92	8.00	
7225.00†	65.467	263.947	6876.94	-742.69	-508.74	814.69	8.00	
7325.00†	73.415	264.922	6912.03	-649.19	-517.79	721.58	8.00	
7425.00†	81.367	265.820	6933.84	-551.79	-525.65	624.39	8.00	
7525.00†	89.321	266.680	6941.95	-452.40	-532.16	525.01	8.00	
7533.53	90.000	266.752	6942.00 ¹	-443.89	-532.64	516.49	8.00	End of 3D Arc
7625.00†	90.000	266.752	6942.00	-352.66	-537.83	425.17	0.00	
7725.00†	90.000	266.752	6942.00	-252.92	-543.49	325.33	0.00	
7825.00†	90.000	266.752	6942.00	-153.18	-549.16	225.49	0.00	
7925.00†	90.000	266.752	6942.00	-53.43	-554.82	125.65	0.00	
8025.00†	90.000	266.752	6942.00	46.31	-560.49	25.81	0.00	
8125.00†	90.000	266.752	6942.00	146.05	-566.15	-74.03	0.00	
8225.00†	90.000	266.752	6942.00	245.79	-571.82	-173.87	0.00	
8325.00†	90.000	266.752	6942.00	345.53	-577.48	-273.70	0.00	
8425.00†	90.000	266.752	6942.00	445.27	-583.15	-373.54	0.00	



Planned Wellpath Report

GOETZEL 12N-30B-M REV-A.0 PWP

Page 5 of 8



REFERENCE WELLPATH IDENTIFICATION

Operator	SYNERGY RESOURCES CORPORATION	Slot	SLOT#17 GOETZEL 12N-30B-M (2237'FSL & 2053'FWL, SEC.29)
Area	COLORADO	Well	GOETZEL 12N-30B-M
Field	WELD COUNTY (NAD83,TRUE NORTH)	Wellbore	GOETZEL 12N-30B-M PWB
Facility	SEC.29-T06N-R66W		

WELLPATH DATA (164 stations) † = interpolated/extrapolated station

MD [ft]	Inclination [°]	Azimuth [°]	TVD [ft]	Vert Sect [ft]	North [ft]	East [ft]	DLS [°/100ft]	Comments
8525.00†	90.000	266.752	6942.00	545.01	-588.81	-473.38	0.00	
8625.00†	90.000	266.752	6942.00	644.75	-594.48	-573.22	0.00	
8725.00†	90.000	266.752	6942.00	744.49	-600.14	-673.06	0.00	
8825.00†	90.000	266.752	6942.00	844.24	-605.81	-772.90	0.00	
8925.00†	90.000	266.752	6942.00	943.98	-611.47	-872.74	0.00	
9025.00†	90.000	266.752	6942.00	1043.72	-617.14	-972.58	0.00	
9125.00†	90.000	266.752	6942.00	1143.46	-622.80	-1072.42	0.00	
9225.00†	90.000	266.752	6942.00	1243.20	-628.47	-1172.26	0.00	
9325.00†	90.000	266.752	6942.00	1342.94	-634.13	-1272.10	0.00	
9425.00†	90.000	266.752	6942.00	1442.68	-639.80	-1371.94	0.00	
9525.00†	90.000	266.752	6942.00	1542.42	-645.46	-1471.78	0.00	
9625.00†	90.000	266.752	6942.00	1642.16	-651.13	-1571.62	0.00	
9725.00†	90.000	266.752	6942.00	1741.91	-656.79	-1671.46	0.00	
9825.00†	90.000	266.752	6942.00	1841.65	-662.46	-1771.30	0.00	
9925.00†	90.000	266.752	6942.00	1941.39	-668.12	-1871.14	0.00	
10025.00†	90.000	266.752	6942.00	2041.13	-673.79	-1970.97	0.00	
10125.00†	90.000	266.752	6942.00	2140.87	-679.45	-2070.81	0.00	
10225.00†	90.000	266.752	6942.00	2240.61	-685.12	-2170.65	0.00	
10325.00†	90.000	266.752	6942.00	2340.35	-690.78	-2270.49	0.00	
10425.00†	90.000	266.752	6942.00	2440.09	-696.45	-2370.33	0.00	
10525.00†	90.000	266.752	6942.00	2539.84	-702.11	-2470.17	0.00	
10625.00†	90.000	266.752	6942.00	2639.58	-707.78	-2570.01	0.00	
10725.00†	90.000	266.752	6942.00	2739.32	-713.44	-2669.85	0.00	
10825.00†	90.000	266.752	6942.00	2839.06	-719.11	-2769.69	0.00	
10925.00†	90.000	266.752	6942.00	2938.80	-724.78	-2869.53	0.00	
11025.00†	90.000	266.752	6942.00	3038.54	-730.44	-2969.37	0.00	
11125.00†	90.000	266.752	6942.00	3138.28	-736.11	-3069.21	0.00	
11225.00†	90.000	266.752	6942.00	3238.02	-741.77	-3169.05	0.00	
11325.00†	90.000	266.752	6942.00	3337.76	-747.44	-3268.89	0.00	
11425.00†	90.000	266.752	6942.00	3437.51	-753.10	-3368.73	0.00	



Planned Wellpath Report

GOETZEL 12N-30B-M REV-A.0 PWP

Page 6 of 8



REFERENCE WELLPATH IDENTIFICATION

Operator	SYNERGY RESOURCES CORPORATION	Slot	SLOT#17 GOETZEL 12N-30B-M (2237'FSL & 2053'FWL, SEC.29)
Area	COLORADO	Well	GOETZEL 12N-30B-M
Field	WELD COUNTY (NAD83,TRUE NORTH)	Wellbore	GOETZEL 12N-30B-M PWB
Facility	SEC.29-T06N-R66W		

WELLPATH DATA (164 stations) † = interpolated/extrapolated station

MD [ft]	Inclination [°]	Azimuth [°]	TVD [ft]	Vert Sect [ft]	North [ft]	East [ft]	DLS [°/100ft]	Comments
11525.00†	90.000	266.752	6942.00	3537.25	-758.77	-3468.57	0.00	
11625.00†	90.000	266.752	6942.00	3636.99	-764.43	-3568.41	0.00	
11725.00†	90.000	266.752	6942.00	3736.73	-770.10	-3668.24	0.00	
11825.00†	90.000	266.752	6942.00	3836.47	-775.76	-3768.08	0.00	
11925.00†	90.000	266.752	6942.00	3936.21	-781.43	-3867.92	0.00	
12025.00†	90.000	266.752	6942.00	4035.95	-787.09	-3967.76	0.00	
12125.00†	90.000	266.752	6942.00	4135.69	-792.76	-4067.60	0.00	
12225.00†	90.000	266.752	6942.00	4235.44	-798.42	-4167.44	0.00	
12325.00†	90.000	266.752	6942.00	4335.18	-804.09	-4267.28	0.00	
12425.00†	90.000	266.752	6942.00	4434.92	-809.75	-4367.12	0.00	
12525.00†	90.000	266.752	6942.00	4534.66	-815.42	-4466.96	0.00	
12625.00†	90.000	266.752	6942.00	4634.40	-821.08	-4566.80	0.00	
12725.00†	90.000	266.752	6942.00	4734.14	-826.75	-4666.64	0.00	
12825.00†	90.000	266.752	6942.00	4833.88	-832.41	-4766.48	0.00	
12925.00†	90.000	266.752	6942.00	4933.62	-838.08	-4866.32	0.00	
13025.00†	90.000	266.752	6942.00	5033.36	-843.74	-4966.16	0.00	
13125.00†	90.000	266.752	6942.00	5133.11	-849.41	-5066.00	0.00	
13225.00†	90.000	266.752	6942.00	5232.85	-855.07	-5165.84	0.00	
13325.00†	90.000	266.752	6942.00	5332.59	-860.74	-5265.67	0.00	
13425.00†	90.000	266.752	6942.00	5432.33	-866.40	-5365.51	0.00	
13525.00†	90.000	266.752	6942.00	5532.07	-872.07	-5465.35	0.00	
13625.00†	90.000	266.752	6942.00	5631.81	-877.73	-5565.19	0.00	
13725.00†	90.000	266.752	6942.00	5731.55	-883.40	-5665.03	0.00	
13825.00†	90.000	266.752	6942.00	5831.29	-889.06	-5764.87	0.00	
13925.00†	90.000	266.752	6942.00	5931.03	-894.73	-5864.71	0.00	
14025.00†	90.000	266.752	6942.00	6030.78	-900.39	-5964.55	0.00	
14125.00†	90.000	266.752	6942.00	6130.52	-906.06	-6064.39	0.00	
14225.00†	90.000	266.752	6942.00	6230.26	-911.72	-6164.23	0.00	
14325.00†	90.000	266.752	6942.00	6330.00	-917.39	-6264.07	0.00	
14425.00†	90.000	266.752	6942.00	6429.74	-923.05	-6363.91	0.00	



Planned Wellpath Report

GOETZEL 12N-30B-M REV-A.0 PWP

Page 7 of 8



REFERENCE WELLPATH IDENTIFICATION

Operator	SYNERGY RESOURCES CORPORATION	Slot	SLOT#17 GOETZEL 12N-30B-M (2237'FSL & 2053'FWL, SEC.29)
Area	COLORADO	Well	GOETZEL 12N-30B-M
Field	WELD COUNTY (NAD83,TRUE NORTH)	Wellbore	GOETZEL 12N-30B-M PWB
Facility	SEC.29-T06N-R66W		

WELLPATH DATA (164 stations) † = interpolated/extrapolated station

MD [ft]	Inclination [°]	Azimuth [°]	TVD [ft]	Vert Sect [ft]	North [ft]	East [ft]	DLS [°/100ft]	Comments
14525.00†	90.000	266.752	6942.00	6529.48	-928.72	-6463.75	0.00	
14625.00†	90.000	266.752	6942.00	6629.22	-934.38	-6563.59	0.00	
14725.00†	90.000	266.752	6942.00	6728.96	-940.05	-6663.43	0.00	
14825.00†	90.000	266.752	6942.00	6828.71	-945.71	-6763.27	0.00	
14925.00†	90.000	266.752	6942.00	6928.45	-951.38	-6863.11	0.00	
15025.00†	90.000	266.752	6942.00	7028.19	-957.05	-6962.94	0.00	
15125.00†	90.000	266.752	6942.00	7127.93	-962.71	-7062.78	0.00	
15225.00†	90.000	266.752	6942.00	7227.67	-968.38	-7162.62	0.00	
15325.00†	90.000	266.752	6942.00	7327.41	-974.04	-7262.46	0.00	
15425.00†	90.000	266.752	6942.00	7427.15	-979.71	-7362.30	0.00	
15525.00†	90.000	266.752	6942.00	7526.89	-985.37	-7462.14	0.00	
15625.00†	90.000	266.752	6942.00	7626.63	-991.04	-7561.98	0.00	
15725.00†	90.000	266.752	6942.00	7726.38	-996.70	-7661.82	0.00	
15801.58	90.000	266.752	6942.00 ²	7802.76	-1001.04	-7738.28	0.00	End of Tangent

HOLE & CASING SECTIONS - Ref Wellbore: GOETZEL 12N-30B-M PWB Ref Wellpath: GOETZEL 12N-30B-M REV-A.0 PWP

String/Diameter	Start MD [ft]	End MD [ft]	Interval [ft]	Start TVD [ft]	End TVD [ft]	Start N/S [ft]	Start E/W [ft]	End N/S [ft]	End E/W [ft]
13.5in Open Hole	25.00	1700.00	1675.00	25.00	1698.70	0.00	0.00	-8.76	26.47
8.5in Open Hole	1700.00	15801.00	14101.00	1698.70	6942.00	-8.76	26.47	-1001.01	-7737.70



Planned Wellpath Report

GOETZEL 12N-30B-M REV-A.0 PWP

Page 8 of 8



REFERENCE WELLPATH IDENTIFICATION

Operator	SYNERGY RESOURCES CORPORATION	Slot	SLOT#17 GOETZEL 12N-30B-M (2237'FSL & 2053'FWL, SEC.29)
Area	COLORADO	Well	GOETZEL 12N-30B-M
Field	WELD COUNTY (NAD83,TRUE NORTH)	Wellbore	GOETZEL 12N-30B-M PWB
Facility	SEC.29-T06N-R66W		

TARGETS

Name	MD [ft]	TVD [ft]	North [ft]	East [ft]	Grid East [US ft]	Grid North [US ft]	Latitude	Longitude	Shape
SEC.29-T06N-R66W NORTHERN		9.00	1262.35	821.99	3194449.66	1411671.99	40°27'40.817"N	104°48'04.259"W	polygon
SEC.29-T06N-R66W SOUTHERN		9.00	1262.35	821.99	3194449.66	1411671.99	40°27'40.817"N	104°48'04.259"W	polygon
SEC.30-T06N-R66W NORTHERN		9.00	1262.35	821.99	3194449.66	1411671.99	40°27'40.817"N	104°48'04.259"W	polygon
SEC.30-T06N-R66W SOUTHERN		9.00	1262.35	821.99	3194449.66	1411671.99	40°27'40.817"N	104°48'04.259"W	polygon
GOETZEL 12N-30B-M BHL ON PLAT (1599'FSL & 510'FWL SEC.30)		6942.00	-981.11	-7378.44	3186267.41	1409364.33	40°27'18.637"N	104°49'50.340"W	circle
2) GOETZEL 12N-30B-M BHL REV-1 (1599'FSL & 150'FWL SEC.30)	15801.58	6942.00	-1001.04	-7738.28	3185907.75	1409341.59	40°27'18.439"N	104°49'54.995"W	point
1) GOETZEL 12N-30B-M TOP OF PROD REV-1 (1691'FSL & 2572'FWL SEC.29)	7533.53	6942.00	-532.64	516.49	3194158.27	1409874.72	40°27'23.080"N	104°48'08.212"W	circle

SURVEY PROGRAM - Ref Wellbore: GOETZEL 12N-30B-M PWB Ref Wellpath: GOETZEL 12N-30B-M REV-A.0 PWP

Start MD [ft]	End MD [ft]	Positional Uncertainty Model	Log Name/Comment	Wellbore
25.00	1700.00	Custom BHI NaviTrak (Standard Rotating+Axial Corr) (Rockies 0.03Gt model)		GOETZEL 12N-30B-M PWB
1700.00	15801.58	Custom BHI AutoTrak Curve (IFR1, Short) (Rockies 0.03Gt model)		GOETZEL 12N-30B-M PWB