

HALLIBURTON

iCem[®] Service

EXTRACTION OIL & GAS

United States of America, COLORADO

Matrix E-29HN

Production

903752645

Job Date: Saturday, December 31, 2016

Sincerely,

Derek Trier

Legal Notice

Disclaimer:

All information in this report is provided subject to the terms and conditions which govern the services provided by Halliburton. Halliburton personnel use their best efforts in gathering information and their best judgment in interpreting it, but any interpretation, research, analysis or recommendation furnished by Halliburton are opinions based upon inferences from measurements and empirical relationships and assumptions, which inferences and empirical relationships and assumptions are not infallible, and with respect to which professionals in the industry may differ. Accordingly, HALLIBURTON IS UNABLE TO GUARANTEE THE ACCURACY OF ANY CHART INTERPRETATION, RESEARCH ANALYSIS, OR JOB RECOMMENDATION and any interpretation or recommendation is not for use of or reliance upon by any third party. The customer has full responsibility for any of its decisions which are based on the information provided in this report.

Table of Contents

1.0 Cementing Job Summary 4

 1.1 Executive Summary4

2.0 Real-Time Job Summary 7

 2.1 Job Event Log7

3.0 Attachments..... 9

 3.1 903752645-Custom Results.png9

 3.2 903752645-Custom Results (1).png10

1.0 Cementing Job Summary

1.1 Executive Summary

Halliburton appreciates the opportunity to perform the cementing services on the **Matrix E-29HN** cement **Production** casing job. A pre-job safety meeting was held before the job where details of the job were discussed, potential safety hazards were reviewed, and environmental compliance procedures were outlined.

Approximately, 40bbl of cement returned to surface.

Halliburton maintains a continuous quality improvement process and appreciates any comments or suggestions that you may have. Halliburton again thanks you for the opportunity to perform service work on this well. We hope to be your solutions provider for future projects.

Respectfully,

Halliburton [Ft. Lupton]

HALLIBURTON

Cementing Job Summary



The Road to Excellence Starts with Safety

Sold To #: 369404		Ship To #: 3627194		Quote #:		Sales Order #: 0903752645				
Customer: EXTRACTION OIL & GAS				Customer Rep:						
Well Name: MATRIX		Well #: E-29HN		API/UWI #: 05-123-40705-00						
Field: GREELEY		City (SAP): GREELEY		County/Parish: WELD		State: COLORADO				
Legal Description: SE SW-29-6N-65W-462FSL-2348FWL										
Contractor: H & P DRLG				Rig/Platform Name/Num: H & P 321						
Job BOM: 7523										
Well Type: HORIZONTAL OIL										
Sales Person: HALAMERICA\HX38199				Srv Supervisor: Andrew Brennecke						
Job										
Formation Name										
Formation Depth (MD)		Top		Bottom						
Form Type				BHST						
Job depth MD		11670ft		Job Depth TVD						
Water Depth				Wk Ht Above Floor ³						
Perforation Depth (MD)		From		To						
Well Data										
Description	New / Used	Size in	ID in	Weight lbm/ft	Thread	Grade	Top MD ft	Bottom MD ft	Top TVD ft	Bottom TVD ft
Casing		9.625	8.921	36			0	1570	0	1570
Casing		5.5	4.778	20		P-110	0	11670	0	0
Open Hole Section			7.875				1570	11673	1570	7050
Tools and Accessories										
Type	Size in	Qty	Make	Depth ft		Type	Size in	Qty	Make	
Guide Shoe						Top Plug	5.5	1	KLX	
Float Shoe	5.5	1		11670		Bottom Plug				
Float Collar	5.5	1		11616		SSR plug set				
Insert Float						Plug Container	5.5	1	HES	
Stage Tool						Centralizers				
Fluid Data										
Stage/Plug #: 1										
Fluid #	Stage Type	Fluid Name	Qty	Qty UoM	Mixing Density lbm/gal	Yield ft ³ /sack	Mix Fluid Gal	Rate bbl/min	Total Mix Fluid Gal	
1	11.5 lb/gal Tuned Spacer III	Tuned Spacer III	50	bbl	11.5	3.74		3		
0.30 gal/bbl		MUSOL A, 330 GAL TOTE - (790828)								
149.34 lbm/bbl		BARITE, BULK (100003681)								
35.40 gal/bbl		FRESH WATER								
0.30 gal/bbl		DUAL SPACER SURFACTANT B, 5 GAL PAIL (100003665)								

last updated on 1/16/2017 12:09:59 PM

Page 1 of 2

iCem® Service

(v. 4.3.44)

Created: Monday, January 16, 2017

HALLIBURTON

Cementing Job Summary

Fluid #	Stage Type	Fluid Name	Qty	Qty UoM	Mixing Density lbm/gal	Yield ft3/sack	Mix Fluid Gal	Rate bbl/min	Total Mix Fluid Gal	
2	ElastiCem W/O CBL	ELASTICEM (TM) SYSTEM	150	sack	13.2	1.57		6	7.48	
7.48 Gal		FRESH WATER								
0.90 %		HR-5, 50 LB SK (100005050)								
Fluid #	Stage Type	Fluid Name	Qty	Qty UoM	Mixing Density lbm/gal	Yield ft3/sack	Mix Fluid Gal	Rate bbl/min	Total Mix Fluid Gal	
3	ElastiCem Tail	ELASTICEM (TM) SYSTEM	1400	sack	13.2	1.57		7.4	7.49	
7.49 Gal		FRESH WATER								
0.80 %		HR-5, 50 LB SK (100005050)								
Fluid #	Stage Type	Fluid Name	Qty	Qty UoM	Mixing Density lbm/gal	Yield ft3/sack	Mix Fluid Gal	Rate bbl/min	Total Mix Fluid Gal	
4	Displacement	Displacement	256.7	bbl	8.33			11.5		
Cement Left In Pipe		Amount	53 ft		Reason			Shoe Joint		
Mix Water:		pH 7	Mix Water Chloride:		0 ppm		Mix Water Temperature:		55 °F	
Cement Temperature:			Plug Displaced by:		8.4 lb/gal		Disp. Temperature:			
Plug Bumped?		Yes	Bump Pressure:		2607 psi MPa		Floats Held?		Yes	
Cement Returns:		40 bbl	Returns Density:				Returns Temperature:			
Comment										

2.0 Real-Time Job Summary

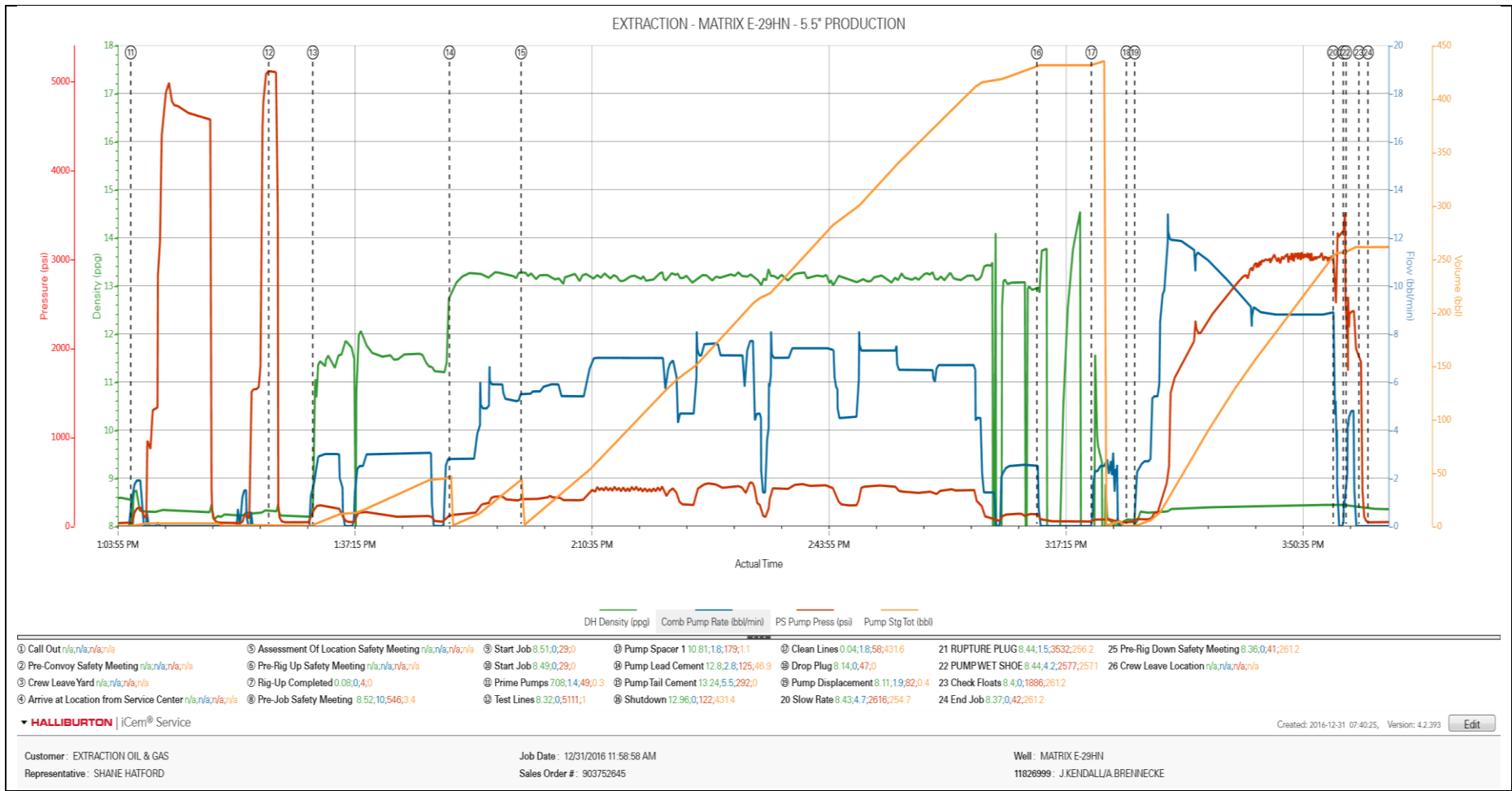
2.1 Job Event Log

Type	Seq. No.	Activity	Graph Label	Date	Time	Source	PS Pump Press (psi)	DH Density (ppg)	Comb Pump Rate (bbl/min)	Comments
Event	1	Call Out	Call Out	12/31/2016	06:00:00	USER				
Event	2	Pre-Convoy Safety Meeting	Pre-Convoy Safety Meeting	12/31/2016	08:45:00	USER				ALL HES PRESENT
Event	3	Crew Leave Yard	Crew Leave Yard	12/31/2016	09:00:00	USER				
Event	4	Arrive at Location from Service Center	Arrive at Location from Service Center	12/31/2016	10:00:00	USER				RIG RUNNING CASING
Event	5	Assessment Of Location Safety Meeting	Assessment Of Location Safety Meeting	12/31/2016	10:15:00	USER				
Event	6	Pre-Rig Up Safety Meeting	Pre-Rig Up Safety Meeting	12/31/2016	10:25:00	USER				ALL HES PRESENT
Event	7	Rig-Up Completed	Rig-Up Completed	12/31/2016	12:00:00	USER	4.00	0.08	0.00	1-ELITE, 1-660 BULK TRAILER, 1-1400 FIELD BIN, 1-1600 FIELD BIN, 5.5" QUICK LATCH PLUG CONTAINER, 2' PUMP IRON, 4" SUCTION HOSE
Event	8	Pre-Job Safety Meeting	Pre-Job Safety Meeting	12/31/2016	12:15:00	USER	546.00	8.52	10.00	ALL HES AND RIG CREW PRESENT
Event	9	Start Job	Start Job	12/31/2016	12:52:26	COM5	29.00	8.51	0.00	
Event	10	Start Job	Start Job	12/31/2016	13:00:00	USER	29.00	8.49	0.00	TD-11673', TVD-7050", TP-11670.3', SJ-53.37', CSG-5.5" 20# P110, OH-7.875", SCSG-9.625" 36# 0-1570', MUD-8.7PPG
Event	11	Prime Pumps	Prime Pumps	12/31/2016	13:05:59	USER	45.00	6.19	1.40	FRESH WATER
Event	12	Test Lines	Test Lines	12/31/2016	13:25:24	COM5	5111.00	8.32	0.00	1" LOTORQ WAS REPLACED ON FIRST PRESSURE TEST, ALL PRESSURE HELD AFTER

Event	13	Pump Spacer 1	Pump Spacer 1	12/31/2016	13:31:36	COM5	179.00	10.81	1.80	TUNED SPACER III, 50BBLS, 11.5PPG, 3.74CF/SK, 23.7GAL/SK
Event	14	Pump Lead Cement	Pump Lead Cement	12/31/2016	13:50:48	COM5	125.00	12.79	2.80	ELASTICEM W/O CBL 150SKS, 1.57CF/SK, 7.48GAL/SK
Event	15	Pump Tail Cement	Pump Tail Cement	12/31/2016	14:00:53	COM5	293.00	13.24	5.50	ELASTICEM W/CBL 1400SKS, 13.2PPG, 1.57CF/SK, 7.49GAL/SK
Event	16	Shutdown	Shutdown	12/31/2016	15:13:25	USER	127.00	12.96	0.70	
Event	17	Clean Lines	Clean Lines	12/31/2016	15:21:05	COM5	57.00	-0.09	1.80	CLEANED PUMPS AND LINES TO 4 SIDED TANK
Event	18	Drop Plug	Drop Plug	12/31/2016	15:26:01	USER	47.00	8.14	0.00	
Event	19	Pump Displacement	Pump Displacement	12/31/2016	15:27:10	COM5	82.00	8.11	1.80	
Event	20	Slow Rate	Slow Rate	12/31/2016	15:55:05	USER	2698.00	8.44	4.60	
Event	21	Other	RUPTURE PLUG	12/31/2016	15:56:30	USER	3532.00	8.44	1.50	RUPTURED PLUG 3500PSI
Event	22	Other	PUMP WET SHOE	12/31/2016	15:56:54	USER	1745.00	8.40	4.10	PUMPED 5 BBL WET SHOE
Event	23	Check Floats	Check Floats	12/31/2016	15:58:43	USER	1886.00	8.40	0.00	FLOATS HELD 2 BBLS BACK
Event	24	End Job	End Job	12/31/2016	15:59:59	COM5	42.00	8.37	0.00	GOOD RETURNS THROUGH OUT JOB, 40BBLS CEMENT TO SURFACE
Event	25	Pre-Rig Down Safety Meeting	Pre-Rig Down Safety Meeting	12/31/2016	16:05:00	USER	41.00	8.36	0.00	ALL HES PRESENT
Event	26	Crew Leave Location	Crew Leave Location	1/1/2017	17:30:00	USER				THANK YOU FOR CHOOSING HALLIBURTON, ANDREW BRENNECKE AND CREW

3.0 Attachments

3.1 903752645-Custom Results.png



3.2 903752645-Custom Results (1).png

